



**30TH ANNUAL
PRODUCTION
SALE**

**Friday
February 24, 2017**

1:00 pm

At the Ranch • Hall, Montana



140 Bulls Sell!

70 Angus

70 Optimizers & Salers

www.SKINNERRANCH.COM



Friday February 24, 2017

1:00 pm

At the Ranch • Hall, Montana

**30TH ANNUAL
PRODUCTION
SALE**

140 Bulls Sell!

70 Angus • 70 Optimizers & Salers

www.SKINNERRANCH.COM



First Breeding Season Guarantee

Full coverage for 60 day breeding season.

- Broken penis (ruptured penis) in a single sire group.
- Structural problems due to feet and legs

50% Coverage of purchase price for 60 day breeding season

All bulls selling for \$3500 or more will be covered 50% by Skinner Ranch Seedstock if they are injured during their first breeding season. Breeding season is defined as the 60 day period following first turn out of the bulls. 50% of the value of the injured bull, minus 1/2 salvage value, will be given as a credit in the next year's sale, or toward a replacement bull if one is available, or cash back. Salvage value, if any, will be split equally between Skinner Ranch Seedstock and the buyer. All injured bulls must be diagnosed by a veterinarian. Please notify us as soon as possible should an injury occurs and prior to the injured bull being sold for salvage.

- Broken penis (ruptured penis) injury in a multiple sire pasture
- Broken legs
- Stifle
- Disposition

All claims must be made by September 1, 2017. This does not include death as this can be insured for nor does it cover mismanagement or neglect. It does not cover injuries sustained prior to breeding season if your bull is turned out with other bulls.

Exceptions are foot rot, wire cuts, illness, and items out of Skinner Ranch Seedstock control.

Example 1: A \$7000 bull is injured, a credit of \$3500 minus 1/2 any salvage value will be given to the buyer.

Example 2: A \$4000 bull is injured, a credit of \$2000 minus 1/2 of any salvage value will be given to the buyer.

Example 3: A \$3000 bull is injured, no credit is given. Buyer retains all salvage value.

INTERNET AND PHONE BUYING

All Internet and phone buyers must be pre-registered with Northern Livestock Video Auction and have a buyer number to bid on the phone or internet. To register with NLVA call **866-616-5035** before Sale Day.

View the Online Catalog and video of each bull selling at www.northernlivestockvideo.com

Bidders who are successful in making purchases will be contacted following the sale to make payment and delivery arrangements.

Accommodations and Transportation:

Missoula and Butte are served by major airlines.

Missoula: 60 miles west

Hilton Garden Inn . . . 406-532-5300
Comfort Inn 406-542-0888

Butte: 60 miles east

Comfort Inn 406-494-8850
Days Inn 406-494-7000

Deer Lodge: 30 miles east

Super 8 406-846-2370

Drummond: 6.5 miles north

Drummond Motel . . . 406-288-6000
Wagon Wheel Motel . . 406-288-3201
Sky Motel 1-800-559-3206



Announcements from the block will take precedence over the catalog.

This catalog is proudly produced in Montana and printed on FSC certified, 100% PCRF, American made paper.





Friday February 24, 2017

Lunch at 12:00 Noon • Sale 1:00 pm
At the Ranch • Hall, Montana

www.SKINNERRANCH.com



406-288-3872

office/home phone

Ron's Cell . . . 406-370-6994

Tim 406-581-6224

Kim 406-581-1852

skinnerranch@blackfoot.net

Sale Day Phone

406-288-4001

Auctioneer:

Joe Goggins 406-861-5664



Office phone and emergency phone
in case you need a phone number
to call us on sale day

406-288-3872

** Please call in advance to make
arrangements to call in during the sale*

Livestock Press Representatives:

Kurt Kangas, American Angus Association - 406-366-4190

Dean Pike, American Salers Association - 303-810-7605

John Goggins, Western Ag Reporter - 406-373-5000

Jeff Thomas, Prairie Star, Ag Weekly - 406-581-8859

Sale Locations and Directions: Take Drummond Exit 154 off Interstate 90 then take Montana Highway 1 south 6.5 miles to Hall. Turn west in Hall and go 1.5 miles on paved road to ranch on the right side of road.

Bids: For buyers unable to attend the sale, a video of the bulls is available to view on Northern or Skinnerranch.com. To discuss the sale offering or bulls on video call us (preferably several days in advance) and describe your needs and budget and we would be happy to assist you in your selection. There will be a number of phones available sale day, please call in advance to make arrangements. Bids may also be sent or called in to Skinner Ranch personnel, auctioneer, or press representatives. Bids are handled with confidentiality and all sight unseen purchases are satisfaction guaranteed.

Northern: Sale will be available live on the internet at www.northernlivestockvideo.com but will **NOT** be broadcast on television. See inside front cover for further information.

Retained Ownership: Skinner Ranch Seedstock is retaining 1/3 revenue sharing interest on all bulls, unless otherwise stated. Full possession and salvage value sell on all bulls.

Terms and Conditions: Cattle sell under terms and conditions of the American Angus Association and the American Salers Association.

Payment for Bulls: Full payment is due sale day unless prior arrangements have been made.

Fertility and Soundness: All bulls will be fertility and soundness examined by sale day. Scrotal circumferences will be available sale day.

Bull Development: Bulls were developed at Hould Feedlot in Malta, MT. The bulls are developed on a high roughage ration to insure longevity and long term soundness. Bulls went up to Malta at the end of September and will come back to the ranch in the middle of February.

Herd Health: All bulls and the entire cow herd were tested and are negative for persistent BVD infection. The bulls are vaccinated with Pyramid 5, VibrioLepto plus Hardjo Bovis, Vision 8/Somnus, foot rot vaccine and Nasalgen.

AM, NH, CA, M1, OH and DD: All sale cattle and the entire SRS herd are AM, NH, CA, M1, OH and DD free.

Performance Data: All current performance data, including yearling data, will be available on sale day.

Angus EPDs are current as of 1/30/17. Updated EPDs can be viewed at www.angus.org.

**Bull Videos are on
Northern or
skinnerranch.com**

Liability: People attending the sale do so at their own risk and responsibility without liability on the part of the ranch owner or employees.

Delivery: \$50 discount on all bulls picked up within 5 days of the sale in MT (Due to Health requirements on out of state bulls it will take longer to get them ready to travel). Bulls will start to be delivered after March 10th. Free delivery on bulls within 500 miles on purchases over \$4,000. The balance of the distance will be at cost.

Volume Discounts: A 5% discount will be given on purchases of five or more bulls.

Loyalty Discount: A 5% discount will be given to loyal customers that have purchased bulls in each of the last two sales (February 2015 and February 2016).

Ron & Bev Skinner
406-288-3872
skinnerranch@blackfoot.net

Tim & Hayley
406-581-6224
skinnerranch@gmail.com

Kim & Michelle
406-581-1852
skinnerranch@hotmail.com



162 Farm to Market West • Hall, MT 59837

Dear Cattlemen,

Welcome to the 2017 Skinner Ranch Seedstock's 30th annual bull sale. We would like to thank all the previous buyers and bidders that had the confidence in our program to make our sales and program a success and allow us to move forward. A very big thank you to our friends and neighbors who help the sale run smoothly. We would not be able to do it without you.

We would like also to thank those who were so supportive of our fall 2016 female sale that brought a large crowd and good prices. The confidence of the repeat buyers is very much appreciated.

Since this is our 30th annual sale we wanted to include some testimonials from a few of our customers.

The last year has been a different year than normal at Skinner Ranch. We had the earliest spring I can remember for a long time and the grass was early and good. We did not expect this since the range was a desert after the 2015 drought and grass hoppers. The grass was a little washy but it is always great to have good grass. The summer was ok and fall had nice weather and moisture so we were able to get a lot of fall work done.

This will be our third year of an end of February bull sale. Most people like it because the bulls are old enough for a semen test, scrotal measurements, and 365 day weights. Being able to sell bulls that we know, and the customers know, are ready to go out and breed takes stress off of all parties involved. The bulls are more mature and developed out. There is less chance of losing bulls to injury and other things from time of purchase to delivery. Do keep in mind that they are like a bunch of high school football players and like to play at night after they eat and sometimes they get a little rough and someone gets hurt. We do feel the changes outweighs any disadvantages the timing has. The date is after the first big run of February calving cows and before the big run of March calving cows. You can always come ahead and look or look at the video on line and discuss the bulls with us and bid sale day by our phones or on Northern Video. We will have people to help. It is best to make arrangements at least 24 to 48 hours ahead of time so we can be sure what you are most comfortable with.

The sale will be on Northern with the video there to watch and bid on if you cannot attend. Many who were unable to attend and were on the phones in the past, have switched over to bidding on the internet and feel comfortable with that. The landline phones with people on the other end are still available if you would like. The information on Northern will be on page 3 of catalog. Please call us for help if you need it, to bid or to get registered with Northern. Again you can come and go through the bulls ahead of time to evaluate them if you would like. Please call us if you have any questions about the buying procedures.

The bulls have been fed out at Hould's feedlot in Malta this year for the first time. We are very happy with the way the bulls look and how they did in some tough weather conditions. First there was 6 inches of rain in September and October then it was down to about 40 below in December and January with everything in between. The health has been excellent. They were well bedded during all that weather. They will be back at the Ranch by about the 13th of February to look at.

We had all the family at Shawn's for Christmas and we love getting to spend time with all of our grandchildren. What fun it is to watch them grow up. That is one of the great joys of being a grandparent. We were blessed with the addition of another granddaughter; Tim and Hayley welcomed Perry Jean Skinner on August 12. She is a very easy going girl that loves to smile.



Kim, Tim and Ron

Stop by the ranch anytime to discuss cows and the cattle business since that is a joy in our lives. Please give us any feedback about the cattle. We want you, our customer, to be happy and will do our best to insure your satisfaction and confidence. Our goal is to make our cattle the very best we can and we are willing to put in any effort it takes to make it happen. Thank you for taking the time to look at our catalog and hope to see you sale day.

Sincerely,
Ron, Bev, Tim, Hayley, Teagan, Perry,
Kim, Michelle, Peyton, and Parker

www.SKINNERRANCH.COM

REFERENCE SIRE

SRS BLOCKBUSTER 2256B

tattoo: 2256B birth: 1/19/14 reg #: 17935421

ANGUS BULL

HF Kodiak 5R
Soo Line Motive 9016
TLA Beauty 5R

Sandy Bar Advantage 43M
Wilbár Ruby 955N
RR 7407 Rainmaker 2154
Terrlene Beauty 35F

| | |
|-----|-------|
| \$W | 61.67 |
| \$F | 68.37 |
| \$G | 18.04 |
| \$B | 97.67 |

Tombstone 050

Sitz Upward 307R #
Mytty Countess 906
S A V 004 Density 4336#
Vermilion Rose 7566#

SRS Rose 2256Z
S R S Rose 6148S

| Angus Association EPDs | | | | | | |
|------------------------|-----|------|------|------|------|-------|
| BW | WW | YW | Milk | Marb | RE | Fat |
| +2.7 | +61 | +108 | +28 | +.26 | +.30 | +0.29 |



SRS Blockbuster 2256B

REFERENCE SIRE

SRS BALANCE 0609B

tattoo: 0609B birth: 2/18/14 reg #: +17932663

ANGUS BULL

Sitz Upward 307R #
Tombstone 050
Mytty Countess 906

Connealy Onward #
Sitz Henrietta Pride 81M
Sitz Alliance 6595 #
Baldrige Countess 357

| | |
|-----|-------|
| \$W | 69.36 |
| \$F | 47.90 |
| \$G | 5.36 |
| \$B | 89.68 |

N Bar Emulation EXT#

Emulation N Bar 5522#
N Bar Primrose 2424

Ox Bow Manor 443#
Ox Bow Manor 037

V D A R Rito 953#
Ox Bow Manor 555

| Angus Association EPDs | | | | | | |
|------------------------|-----|-----|------|------|------|--------|
| BW | WW | YW | Milk | Marb | RE | Fat |
| +0.2 | +59 | +96 | +28 | +.33 | +.05 | +0.092 |



SRS Balance 0609B

REFERENCE SIRE

HF BANK ROLL 84B

tattoo: 84B birth: 1/22/14 reg #: 18176236

ANGUS BULL

Greens Premium 7578
HF Smokin' Aces 105Y
HR Erica 26T

WK Ultimatum
Greens Lori 5078
HF Kodiak 5R
HF Erica 182R

| | |
|-----|-------|
| \$W | 28.60 |
| \$F | 25.98 |
| \$G | 12.85 |
| \$B | 69.29 |

Southland Exclusive 62U

Southland Free Ride 68R
Southland Susan 58L

HF Miss Lucy 268Z
HF Miss Lucy 202W

HF Tiger 5T
HF Miss Lucy 110G

| Angus Association EPDs | | | | | | |
|------------------------|-----|-----|------|------|------|--------|
| BW | WW | YW | Milk | Marb | RE | Fat |
| +0.7 | +38 | +73 | +19 | +.14 | +.05 | +0.014 |



HF Bank Roll 84B

REFERENCE SIRE

SRS ACCOLADE 0336A

tattoo: 0336A birth: 1/29/13 reg #: +17595853

ANGUS BULL

S Alliance 3313
S Chisum 6175
S Gloria 464

Paws Up Alliance 9561
Paws Up 9048 Emulation Ext
S Eclipse 169
S Gloria 209 #

| | |
|-----|--------|
| \$W | 65.76 |
| \$F | 58.07 |
| \$G | 9.38 |
| \$B | 139.31 |

Brooks Ext 792 #

N Bar Emulation EXT #
W C C Blackcap C9

Basin Joyce 5474 #
Basin Joyce 2264

Basin Ambush 843L
Basin Joyce 508M

| Angus Association EPDs | | | | | | |
|------------------------|-----|------|------|------|------|--------|
| BW | WW | YW | Milk | Marb | RE | Fat |
| +2.9 | +60 | +100 | +26 | +.22 | +.54 | +0.052 |



SRS Accolade 0336A

REFERENCE SIRE

TOMBSTONE 050

tattoo: 050 birth: 1/14/10 reg #: +16644975

ANGUS BULL

Connealy Onward #
Sitz Upward 307R #
Sitz Henrietta Pride 81M

Connealy Lead On #
Altune of Conanga 6104
Sitz Value 7097 #
Sitz Henrietta Pride 1370

| | |
|-----|--------|
| \$W | 98.93 |
| \$F | 75.22 |
| \$G | 13.40 |
| \$B | 109.89 |

Sitz Alliance 6595 #

Sitz Traveler 8180 #
Sitz Barbaramere Jet 2698 #
Bon View Emulation Ext 473 #
Baldrige Countess 235

Mytty Countess 906
Baldrige Countess 357

| Angus Association EPDs | | | | | | |
|------------------------|-----|------|------|------|------|--------|
| BW | WW | YW | Milk | Marb | RE | Fat |
| +1.0 | +77 | +128 | +32 | +.33 | +.38 | +0.060 |



Tombstone 050

**REFERENCE
SIRE**

SRS ARIAT 270A

tattoo: SRS270A birth: 2/21/13 reg #: 688434

OPTIMIZER BULL Polled Optimizer Black
SITZ UPWARD 307R CONNEALY ONWARD
SITZ HENRIETTA PRIDE 81
TOMBSTONE 050
MYTTY COUNTESS 906 SITZ ALLIANCE 6595
BALDRIDGE COUNTESS 357
SRS FOCUS 9403F SRS MASTERLINK 9145C
SRS LACIE 9403D
SRS FOOTLOOSE 9927J JWP JET LINE 3B
SRS FOOTLOOSE 9644F SRS CHARISMA 9370C

| American Salers EPDs | | | | | | | | | |
|----------------------|-----|------|-----|------|------|-------|------|------|------|
| BW | WW | YW | MWW | Milk | MB | CW | REA | FT | RBY |
| +1.5 | +54 | +101 | +46 | +19 | +1.4 | +28.2 | -.05 | +.01 | -.02 |



SRS Ariat 270A

**REFERENCE
SIRE**

SRS ZEUS 0509Z

tattoo: SRS0509Z birth: 2/11/12 reg #: 681827

OPTIMIZER BULL Homozygous Polled Optimizer Black
SITZ UPWARD 307R CONNEALY ONWARD
CONNEALY ONWARD
SITZ UNCOMMON
SITZ ELLUNAS ELITE 1697 SITZ RLS ALLIANCE 7164
SITZ ELLUNAS ELITE 1281
SITZ ELLUNAS ELITE 1697 MAC LANSING 302L
SRS ECLIPSE 9722G
PRK MISS MONTANA 503R RRF WORLD WIDE 38L
PRK MISS MONTANA 313N SRS MISS MONTANA 9897H

| American Salers EPDs | | | | | | | | | |
|----------------------|-----|-----|-----|------|------|-------|------|------|------|
| BW | WW | YW | MWW | Milk | MB | CW | REA | FT | RBY |
| -0.3 | +46 | +86 | +43 | +20 | +1.3 | +22.4 | -.02 | +.01 | -.02 |



SRS Zeus 0509Z

**REFERENCE
SIRE**

SRS BATTALION 0984B

tattoo: SRS0984B birth: 1/26/14 reg #: 696710

OPTIMIZER BULL Polled Optimizer Black
SITZ UNCOMMON SITZ UPWARD 307R
SITZ ELLUNAS ELITE 1697
SRS ZEUS 0509Z
PRK MISS MONTANA 503R SRS NOKIA 9722N
PRK MISS MONTANA 313N
SRS RECRUIT 0122R BT RIGHT TIME 24J
SRS AURA 0122L
SRS SEIKO 0984W SRS NEVADA 9378N
SRS SEIKO 0670S SRS PRICELESS 0447P

| American Salers EPDs | | | | | | | | | |
|----------------------|-----|-----|-----|------|------|-------|------|------|------|
| BW | WW | YW | MWW | Milk | MB | CW | REA | FT | RBY |
| -1.4 | +47 | +89 | +48 | +25 | +1.7 | +23.8 | -.13 | +.01 | +0.5 |



SRS Battalion 0984B

**REFERENCE
SIRE**

SRS BENCHMARK 8105B

tattoo: SRS8105B birth: 2/18/14 reg #: 696683

OPTIMIZER BULL Polled Optimizer Black
SITZ UNCOMMON SITZ UPWARD 307R
SITZ ELLUNAS ELITE 1697
SRS ZEUS 0509Z
PRK MISS MONTANA 503R SRS NOKIA 9722N
PRK MISS MONTANA 313N
SRS SAINT 0218S CONNEALY DANNY BOY
SRS JULIET 0218M
SRS SHANNON 8105U S A V 8180 TRAVELER 004
SRS SHANNON 0660S SRS RUSSETT 0305N

| American Salers EPDs | | | | | | | | | |
|----------------------|-----|------|-----|------|------|-------|------|------|-----|
| BW | WW | YW | MWW | Milk | MB | CW | REA | FT | RBY |
| +1.5 | +65 | +108 | +57 | +24 | +0.8 | +31.2 | -.02 | -.01 | 0.0 |



SRS Benchmark 8105B

**REFERENCE
SIRE**

SRS BOTTOM LINE 978B

tattoo: SRS978B birth: 2/17/14 reg #: 696438

OPTIMIZER BULL Polled Optimizer Black
HF Kodiak 5R Sandy Bar Advantage 43M
Wilbar Ruby 955N
Soo Line Motive 9016 RR 7407 Rainmaker 2154
TLA Beauty 5R Terrlene Beauty 35F
MAC LANSING 302L BEV MASTERPIECE 110H
MAC ELIZABETH 37E
SRS JULIET 0584R SRS MASTERLINK 9145C
SRS JULIET 9609F SRS JULIET 9026Z

| American Salers EPDs | | | | | | | | | |
|----------------------|-----|-----|-----|------|------|-------|------|------|------|
| BW | WW | YW | MWW | Milk | MB | CW | REA | FT | RBY |
| +3.2 | +50 | +89 | +45 | +20 | +0.7 | +20.8 | -.03 | +.01 | -.02 |



SRS Bottom line 978B

**REFERENCE
SIRE**

SRS BOND 0838B

tattoo: SRS0838B birth: 2/2/14 reg #: 696593

SALERS BULL

Scurred Purebred Red

DJF WHISKEY RIVER 9006W

JSR JAMACA 431
STCY POLLED KINSEY 05K

SRS YUMA 072Y

SRS RUSSETT 0305N

SRS LATIGO 9633L
SRS RUSSET RED 9205B

CRO SURVEY 615S

NJF FEIST'S GALAXY 06N
RAO 16L

SRS FINICKY 0838U

SRS FINICKY 9809H

SRS FOCUS 9403F
SRS FINICKY 9646F

| American Salers EPDs | | | | | | | | | |
|----------------------|-----|------|-----|------|------|-------|-----|-----|------|
| BW | WW | YW | MWW | Milk | MB | CW | REA | FT | RBY |
| +2.5 | +61 | +117 | +58 | +28 | -1.0 | +43.3 | +24 | .00 | +0.5 |



SRS Bond 0838B

**REFERENCE
SIRE**

SRS BIG LEAGUE 0829B

tattoo: SRS0829B birth: 2/3/14 reg #: 696592

SALERS BULL

Scurred Purebred Black

MAC WELLSVILLE 400W

MAC TORRINGTON 139T
MAC JANETTE 119J

PRK YES 943Y

PRK GINA 943W

DJF ROLEN 5002R
PRK GINA 9713G

CRO SURVEY 615S

NJF FEIST'S GALAXY 06N
RAO 16L

SRS JULIET 0829U

SRS JULIET 0522R

SRS CHEYENNE 9529M
SRS JULIET 9026Z

| American Salers EPDs | | | | | | | | | |
|----------------------|-----|------|-----|------|------|-------|-----|------|------|
| BW | WW | YW | MWW | Milk | MB | CW | REA | FT | RBY |
| +3.2 | +77 | +132 | +67 | +28 | -0.2 | +40.2 | +06 | -.01 | +0.1 |



SRS Big League 0829B





SRS BLOCKBUSTER 3205D

tattoo: 3205D birth: 02/29/16 reg #: 18547450

ANGUS BULL

Soo Line Motive 9016
SRS Blockbuster 2256B
 SRS Rose 2256Z

HF Kodiak 5R
 TLA Beauty 5R

Tombstone 050
 S R S Rose 6148S#

S R S Trademark 732T
SRS Blackbird 3205A
 Basin Blackbird R262#

Connealy Onward#
 Ox Bow Emma E 732

Vermilion Yellowstone#
 Basin Blackbird 628H

| | |
|-----|--------|
| \$W | 61.58 |
| \$F | 46.99 |
| \$G | 32.71 |
| \$B | 116.53 |

| Birth Weight | 205 Weight | Wean Ratio | Sire Avg Birth Wt | Dam Avg Birth Wt | Dam Wean Production |
|--------------|------------|------------|-------------------|------------------|---------------------|
| 88 | 742 | 102 | 20@90 | 2@83 | 2@99 |

| Angus Association EPDs | | | | | | | |
|------------------------|----|-----|-----|------|------|-----|-------|
| CED | BW | WW | YW | Milk | Marb | RE | Fat |
| +5 | +1 | +57 | +96 | +26 | +49 | +43 | -.008 |

- Blockbuster was a top Motive son that we raised in 2014.
- We used this bull as we admired his heavy muscling, structural correctness, excellent feet, and stylish nature.
- Blockbuster calves are stamped with the same phenotype, they are sound made and thick.
- Lot 1 is a very stylish well put together calf with a wide top
- His dam is a good-uddered cow with lots of length



SRS BLOCKBUSTER 1244D

tattoo: 1244D birth: 02/21/16 reg #: 18547442

ANGUS BULL

Soo Line Motive 9016
SRS Blockbuster 2256B
 SRS Rose 2256Z

HF Kodiak 5R
 TLA Beauty 5R

Tombstone 050
 S R S Rose 6148S#

S A V Untouchable 8665

S A V Net Worth 4200#
 S A V May 7238

S R S Rose 1244Y#

S R S Rose 7185T

Connealy Onward#
 Vermilion Rose 7566#

| | |
|-----|--------|
| \$W | 60.90 |
| \$F | 61.08 |
| \$G | 24.75 |
| \$B | 103.81 |

| Birth Weight | 205 Weight | Wean Ratio | Sire Avg Birth Wt | Dam Avg Birth Wt | Dam Wean Production |
|--------------|------------|------------|-------------------|------------------|---------------------|
| 86 | 775 | 107 | 20@90 | 4@84 | 4@105 |

| Angus Association EPDs | | | | | | | |
|------------------------|------|-----|------|------|------|-----|------|
| CED | BW | WW | YW | Milk | Marb | RE | Fat |
| +9 | +1.9 | +61 | +106 | +30 | +42 | +35 | +033 |

- This calf has been a standout since birth
- This bull is extremely explosive in his muscle pattern with an extreme amount of depth in a moderate package
- The dam is a beautifully made cow that has been doing an outstanding job in our herd
- She was put into our donor program last year



REFERENCE
SIRE

SRS Blockbuster 2256B



REFERENCE
DAM

S R S Rose 1244Y
Pathfinder Dam of Lot 2



MATERNAL
BROTHER

SRS Analyze 1244C
Maternal Brother to Lot 2





SRS BLOCKBUSTER 2295D

tattoo: 2295D birth: 02/08/16 reg #: 18547444

ANGUS BULL

Soo Line Motive 9016
SRS Blockbuster 2256B
SRS Rose 2256Z

S R S Xhibit 8071X
SRS Erica 2295Z
Basin Erica 343R#

HF Kodiak 5R
TLA Beauty 5R
Tombstone 050
S R S Rose 6148S#
S R S Update 0157U
Vermilion Pride 8071
Vermilion Payweight J847#
Basin Erica 163N

\$W
69.38
\$F
61.34
\$G
25.09
\$B
118.34

| Birth Weight | 205 Weight | Wean Ratio | Sire Avg Birth Wt | Dam Avg Birth Wt | Dam Wean Production |
|--------------|------------|------------|-------------------|------------------|---------------------|
| 83 | 744 | 103 | 20@90 | 3@78 | 3@102 |

| Angus Association EPDs | | | | | | | |
|------------------------|------|-----|------|------|------|------|------|
| CED | BW | WW | YW | Milk | Marb | RE | Fat |
| +8 | +0.7 | +59 | +102 | +30 | +45 | +3.4 | +0.3 |

- A long, attractive-patterned bull out of a great-uddered female
- Heifer Bull Potential



SRS BLOCKBUSTER 3227D

tattoo: 3227D birth: 03/06/16 reg #: 18547447

ANGUS BULL

Soo Line Motive 9016
SRS Blockbuster 2256B
SRS Rose 2256Z

TC Total 410#
SRS Right Time 3227A
Paws Up 9100 Right Time

HF Kodiak 5R
TLA Beauty 5R
Tombstone 050
S R S Rose 6148S#
Bon View New Design 208#
TC Erica Eileen 2047
Leachman Right Time#
G B Lovely 3063

\$W
60.07
\$F
52.56
\$G
4.34
\$B
77.08

| Birth Weight | 205 Weight | Wean Ratio | Sire Avg Birth Wt | Dam Avg Birth Wt | Dam Wean Production |
|--------------|------------|------------|-------------------|------------------|---------------------|
| 89 | 751 | 104 | 20@90 | 2@84 | 2@102 |

| Angus Association EPDs | | | | | | | |
|------------------------|------|-----|-----|------|------|------|-------|
| CED | BW | WW | YW | Milk | Marb | RE | Fat |
| +11 | +0.6 | +56 | +98 | +26 | +0.2 | +1.3 | +0.25 |

- A calf that is thick-made with a lot of dimension out of a beautiful 410 daughter
- Heifer Bull Potential



SRS BLOCKBUSTER 0589D

tattoo: 0589D birth: 02/21/16 reg #: 18547087

ANGUS BULL

Soo Line Motive 9016
SRS Blockbuster 2256B
SRS Rose 2256Z

BT Right Time 24J#
S R S Lass 0589R
S R S Stockman's Lass 0196L

HF Kodiak 5R
TLA Beauty 5R
Tombstone 050
S R S Rose 6148S#
Leachman Right Time#
Sitz Everelda Entense 1905
TC Stockman 365#
Rain Lass 207#

\$W
44.21
\$F
23.45
\$G
31.62
\$B
65.53

| Birth Weight | 205 Weight | Wean Ratio | Sire Avg Birth Wt | Dam Avg Birth Wt | Dam Wean Production |
|--------------|------------|------------|-------------------|------------------|---------------------|
| 94 | 746 | 103 | 20@90 | 10@85 | 9@100 |

| Angus Association EPDs | | | | | | | |
|------------------------|----|-----|-----|------|------|------|-------|
| CED | BW | WW | YW | Milk | Marb | RE | Fat |
| +9 | +1 | +43 | +72 | +26 | +4.3 | +0.8 | -.014 |

- A well-balanced attractive bull whose donor mother does a great job
- Heifer Bull Potential



REFERENCE DAM

S R S Lass 0589R, Dam of Lot 5

Angus Avg EPDs Non-Parent Bulls CED +6 BW +1.2 WW +48 YW +85 Milk +24 Marb +.56 RE +.51 Fat +.020 \$W 43.34 \$F 39.20 \$G 31.86 \$B 105.91



SRS BLOCKBUSTER 2205D

tattoo: 2205D birth: 03/02/16 reg #: 18547446

ANGUS BULL

Soo Line Motive 9016
SRS Blockbuster 2256B
SRS Rose 2256Z

TC Total 410#
SRS Chloe 2205Z
Basin Chloe 2P31#

HF Kodiak 5R
TLA Beauty 5R
Tombstone 050
S R S Rose 6148S#
Bon View New Design 208#
TC Erica Eileen 2047
C A Future Direction 5321#
Basin Chloe 6102

\$W
47.71
\$F
55.17
\$G
27.34
\$B
108.39

| Birth Weight | 205 Weight | Wean Ratio | Sire Avg Birth Wt | Dam Avg Birth Wt | Dam Wean Production |
|--------------|------------|------------|-------------------|------------------|---------------------|
| 100 | 772 | 107 | 20@90 | 3@83 | 3@104 |

| Angus Association EPDs | | | | | | | |
|------------------------|------|-----|-----|------|------|------|-------|
| CED | BW | WW | YW | Milk | Marb | RE | Fat |
| -4 | +3.8 | +57 | +96 | +27 | +3.5 | +4.8 | +0.06 |

- This bull looks just like his sire, he is stout, powerful, and well-made
- His dam is a long, great-uddered female



SRS BLOCKBUSTER 2240D

tattoo: 2240D birth: 01/30/16 reg #: 18547445

ANGUS BULL

Soo Line Motive 9016
SRS Blockbuster 2256B
SRS Rose 2256Z

WK Bobcat
SRS Eliminator 2240Z
Vermilion Eliminator 1338#

HF Kodiak 5R
TLA Beauty 5R
Tombstone 050
S R S Rose 6148S#
Connealy Right Answer 746#
WK Miss Angus 7127#
Vermilion Yellowstone#
Vermilion Eliminator 7191

\$W
37.45
\$F
57.84
\$G
34.10
\$B
97.95

| Birth Weight | 205 Weight | Wean Ratio | Sire Avg Birth Wt | Dam Avg Birth Wt | Dam Wean Production |
|--------------|------------|------------|-------------------|------------------|---------------------|
| 96 | 721 | 100 | 20@90 | 3@87 | 3@101 |

| Angus Association EPDs | | | | | | | |
|------------------------|------|-----|-----|------|------|------|-------|
| CED | BW | WW | YW | Milk | Marb | RE | Fat |
| +2 | +3.3 | +50 | +96 | +25 | +5.0 | +2.8 | -.011 |

- Another impressive Blockbuster son that has an extreme amount of muscle



MATERNAL BROTHER

S R S Athens 2240C, Maternal Brother to Lot 7



SRS BLOCKBUSTER 3239D

tattoo: 3239D birth: 03/14/16 reg #: 18547448

ANGUS BULL

Soo Line Motive 9016
SRS Blockbuster 2256B
SRS Rose 2256Z

WMR Right Time 1011
SRS Elba 3239A
S R S Elba 0381N

HF Kodiak 5R
TLA Beauty 5R
Tombstone 050
S R S Rose 6148S#
Leachman Right Time 338-5605#
WMR Pride 470
Bon View New Design 878#
Vermilion Elba 0056

\$W
54.49
\$F
63.44
\$G
12.79
\$B
95.82

| Birth Weight | 205 Weight | Wean Ratio | Sire Avg Birth Wt | Dam Avg Birth Wt | Dam Wean Production |
|--------------|------------|------------|-------------------|------------------|---------------------|
| 92 | 755 | 104 | 20@90 | 2@88 | 2@105 |

| Angus Association EPDs | | | | | | | |
|------------------------|------|-----|------|------|------|------|-------|
| CED | BW | WW | YW | Milk | Marb | RE | Fat |
| +2 | +3.4 | +59 | +102 | +26 | +1.0 | +3.8 | +0.17 |

- A nice-patterned, higher indexing bull out of a beautiful-uddered cow





LOT
11

9 **SRS BLOCKBUSTER 0130D**
tattoo: 0130D birth: 03/01/16 reg #: 18547085

ANGUS BULL
Soo Line Motive 9016 HF Kodiak 5R
SRS Blockbuster 2256B TLA Beauty 5R
SRS Rose 2256Z Tombstone 050
S A V Net Worth 4200# S R S Rose 6148S#
S R S Emma 0130X S A V 8180 Traveler 004#
Ox Bow Emma E 732 N Bar Emulation EXT#
Ox Bow Emma E 512

| | |
|-----|--------|
| \$W | 41.85 |
| \$F | 38.42 |
| \$G | 31.15 |
| \$B | 107.75 |

| Birth Weight | 205 Weight | Wean Ratio | Sire Avg Birth Wt | Dam Avg Birth Wt | Dam Wean Production |
|--------------|------------|------------|-------------------|------------------|---------------------|
| 93 | 702 | 97 | 20@90 | 5@86 | 5@98 |

| Angus Association EPDs | | | | | | | |
|------------------------|----|-----|-----|------|------|-----|------|
| CED | BW | WW | YW | Milk | Marb | RE | Fat |
| +3 | +3 | +48 | +86 | +25 | +53 | +33 | +017 |

- A well-balanced bull out of an eye appealing Networkh daughter



11 **SRS GREELEY 4226D**
tattoo: 4226D birth: 02/05/16 reg #: 18547263

ANGUS BULL
Connealy Confidence 0100 Connealy Tobin
Connealy Greeley Becka Gala of Conanga 8281
Precious of Conanga 0484 Connealy 044 062#
Precious Pie of Conanga 6134
Musgrave Foundation Kesslers Frontman R001#
SRS Blanche 4226B MCATL Blackcap Juara 29-434
S R S Blanche 0100X Vermilion X Factor#
Ox Bow Blanche 2105

| | |
|-----|-------|
| \$W | 67.74 |
| \$F | 87.76 |
| \$G | 5.68 |
| \$B | 96.55 |

| Birth Weight | 205 Weight | Wean Ratio | Sire Avg Birth Wt | Dam Avg Birth Wt | Dam Wean Production |
|--------------|------------|------------|-------------------|------------------|---------------------|
| 90 | 774 | 107 | 21@89 | 1@90 | 1@107 |

| Angus Association EPDs | | | | | | | |
|------------------------|------|-----|------|------|------|-----|------|
| CED | BW | WW | YW | Milk | Marb | RE | Fat |
| +3 | +2.1 | +70 | +120 | +24 | -.08 | +72 | +024 |

- Connealy Greeley is a sire we used due to his impressive sons and his dam who was long-made, good-footed, with a great udder
- His calves here, Angus & Optimizer, are long, thick and stylish
- Lot 11 is an extremely stylish, long-fronted bull that has lots of thickness and depth
- His weaning weight is impressive out of a first-calf heifer
- The dam is a moderate, good-uddered Foundation daughter



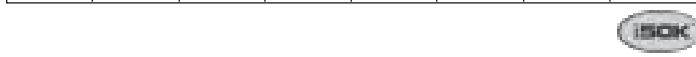
10 **SRS BLOCKBUSTER 3236D**
tattoo: 3236D birth: 03/02/16 reg #: 18547449

ANGUS BULL
Soo Line Motive 9016 HF Kodiak 5R
SRS Blockbuster 2256B TLA Beauty 5R
SRS Rose 2256Z Tombstone 050
S R S Rose 6148S#
Sitz Bull Durham 10308 Sitz New Design 458N#
SRS Evergreen 3236A Sitz Emma E 1076
S R S Evergreen 0107X S A V Net Worth 4200#
Ox Bow Eisa Evergreen 226#

| | |
|-----|-------|
| \$W | 58.22 |
| \$F | 50.58 |
| \$G | 21.76 |
| \$B | 89.09 |

| Birth Weight | 205 Weight | Wean Ratio | Sire Avg Birth Wt | Dam Avg Birth Wt | Dam Wean Production |
|--------------|------------|------------|-------------------|------------------|---------------------|
| 91 | 749 | 103 | 20@90 | 2@82 | 2@101 |

| Angus Association EPDs | | | | | | | |
|------------------------|------|-----|-----|------|------|-----|-----|
| CED | BW | WW | YW | Milk | Marb | RE | Fat |
| +7 | +2.1 | +52 | +95 | +30 | +28 | +43 | +03 |



REFERENCE
SIRE

Connealy Greeley



13 **SRS GREELEY 7136D**
 tattoo: 7136D birth: 02/15/16 reg #: 18621076 ET

ANGUS BULL

| | | |
|--------------------------|------------------------------|--------------|
| Connealy Confidence 0100 | Connealy Tobin | \$W |
| Connealy Greeley | Becka Gala of Conanga 8281 | 42.12 |
| Precious of Conanga 0484 | Connealy 044 062# | \$F |
| | Precious Pie of Conanga 6134 | 59.80 |
| | TC Stockman 365# | \$G |
| S R S Elba 0382N | TC Stockman# | 14.57 |
| Vermilion Elba 0056 | TC Pride 0014 | \$B |
| | Leachman Volunteer# | 86.32 |
| | Vermilion Elba 8420 | |

| Birth Weight | 205 Weight | Wean Ratio | Sire Avg Birth Wt | Dam Avg Birth Wt | Dam Wean Production |
|--------------|------------|------------|-------------------|------------------|---------------------|
| 88 | 733 | 100 | 21@89 | 11@72 | 11@103 |

| Angus Association EPDs | | | | | | | |
|------------------------|----|-----|-----|------|-------|-------|-------|
| CED | BW | WW | YW | Milk | Marb | RE | Fat |
| +11 | +1 | +53 | +92 | +21 | +0.04 | +0.30 | -0.22 |

- This is as long of a bull as you will find in the sale
- His donor dam is a long-made, good-uddered female that consistently has short gestation, light BW calves
- Heifer Bull Potential



REFERENCE DAM

S R S Elba 0382N, Dam of Lot 13



12 **SRS GREELEY 2228D**
 tattoo: 2228D birth: 02/09/16 reg #: 18564571

ANGUS BULL

| | | |
|--------------------------|------------------------------|--------------|
| Connealy Confidence 0100 | Connealy Tobin | \$W |
| Connealy Greeley | Becka Gala of Conanga 8281 | 60.61 |
| Precious of Conanga 0484 | Connealy 044 062# | \$F |
| | Precious Pie of Conanga 6134 | 62.89 |
| | Connealy Thunder# | \$G |
| Myty Thunderstruck | Sitz Everelda Entense 5038 | 21.92 |
| SRS Kathy 2228Z | B C C Bushwacker 41-93# | \$B |
| S R S Kathy 0394N# | Tar Kathy 8003 | 85.23 |

| Birth Weight | 205 Weight | Wean Ratio | Sire Avg Birth Wt | Dam Avg Birth Wt | Dam Wean Production |
|--------------|------------|------------|-------------------|------------------|---------------------|
| 76 | 774 | 107 | 21@89 | 3@68 | 2@99 |

| Angus Association EPDs | | | | | | | |
|------------------------|------|-----|------|------|-------|-------|-------|
| CED | BW | WW | YW | Milk | Marb | RE | Fat |
| +12 | -0.4 | +63 | +102 | +20 | +0.23 | +0.43 | +0.17 |

- An extremely, long-sided, long-fronted bull that is very wide-topped
- The dam is a beautiful female that is an ideal Angus cow
- Heifer Bull Potential



REFERENCE DAM

SRS Kathy 2228Z, Dam of Lot 12

High Standards

At Graveley Black Mountain Ranch in the Avon valley we have been using SRS bulls for ten years. We are a black Angus cow-calf operation that utilizes native pasture and wild hay, put up with a beaver slide. I guess we are a little slow coming around.

The first thing that brought us to the Skinner Ranch Seedstock sale was their high standard for conformation and natural performance. At the Skinner Ranch they realize that not everybody has first and second cutting alfalfa to feed all winter.

The quality of the bulls is what keeps us coming back. The attention to detail that Skinners put in their cattle is obvious. From conformation and feeding to productivity and phenotype, they use a sharp knife. The uniformity of our calves has also increased. We no longer have twenty percent of our calves that don't fit the herd.

Ron, Kim, and Tim have always been willing to answer questions about any facet of the beef industry. From mineral packages to suggestions on what to breed the heifers to. Their advice is sound and conscientious. They would rather you the customer be happy than sell you a bull.

Charlie, Will, & Matt Graveley • Avon, MT

Angus Bulls



14 **SRS HOMESTEAD 9136D**
 tattoo: 9136D birth: 02/11/16 reg #: 18612046

ANGUS BULL

| | | |
|-----------------------------|------------------------------|---------------|
| Basin Excitement | Basin Expedition R156 | \$W |
| | Basin Lady S532 AK | 46.94 |
| Hoover Homestead | | \$F |
| Miss Blackbird Ellston J407 | Hoover G Force | 49.52 |
| | Miss Blackbird Ellston D471# | \$G |
| BT Right Time 24J# | Leachman Right Time# | 36.32 |
| SRS Blackbird 9136W | Sitz Everelda Entense 1905 | \$B |
| Ox Bow Blackbird 888 | Bon View Emulation Ext 473# | 126.74 |
| | Ox Bow Blackbird 638 | |

| Birth Weight | 205 Weight | Wean Ratio | Sire Avg Birth Wt | Dam Avg Birth Wt | Dam Wean Production |
|--------------|------------|------------|-------------------|------------------|---------------------|
| 98 | 769 | 106 | 13@81 | 6@90 | 6@103 |

| Angus Association EPDs | | | | | | | |
|------------------------|----|-----|-----|------|------|-----|-------|
| CED | BW | WW | YW | Milk | Marb | RE | Fat |
| +0 | +2 | +52 | +88 | +24 | +51 | +57 | -.015 |

- Homestead is a bull that we admired for his phenotype and used for his outcross pedigree
- Lot 14 is a very stout, square made bull with outcross genetics
- Be sure to look him up on sale day
- The dam is a long-sided, beautiful-uddered cow that does well every year



Hoover Homestead

Bulls That Maintain Their Condition and Health

We have been taking in the Skinner Ranch Bull Sale for over two decades, it started with going to the sale with my father-in-law Sam Steffan as he bought registered bulls and heifers from Ron & Bev.

I have enjoyed watching the Skinner family and ranch grow as they expanded into Optimizer and Angus cattle. We were also growing our herd of predominantly Angus cattle at the time.

We run on mostly native grass pasture in the foothills around Cascade, MT.

Our bull herd is now over 90 percent SRS blood lines, with many of them half-brothers. We are impressed with the way they maintain their condition and structural health.

SRS bulls fit our program of breeding length & thickness of loin into cattle.

We are also pleased with the calves' ability to grow and finish without becoming oversized for our part of the country.

Calves are born between March 1st and April 15th. This last fall on the 2nd of November 100 percent of our steers loaded on the trucks with the average weight of 708 lbs. A pen of steers we thought were very even, thanks to the use of Skinner Ranch Bulls.

Tracy & Kelly Mikes • Cascade, MT





LOT
15



Tombstone 050

REFERENCE
SIRE

**LOTS 15-16
FLUSH BROTHERS**

- Tombstone needs no introduction in our program we have been extremely pleased in the consistency and performance of his offspring
- These flush brothers are long-sided and thick-made
- These bulls will be an asset to any program
- The donor dam is a coming 14 year old cow that is still in production
- She is the biggest spread cow from birth to weaning that we have owned
- She is a long, deep, thick cow with a nice udder and good feet
- Heifer Bull Potential



S R S Kathy 0394N, Pathfinder Dam of Lot 16

REFERENCE
DAM

15 **SRS TOMBSTONE 1070D**
tattoo: 1070D birth: 02/05/16 reg #: 18565262 ET

ANGUS BULL

| | | |
|---------------------------|--------------------------|--------------|
| Sitz Upward 307R# | Connealy Onward# | \$W |
| Tombstone 050 | Sitz Henrietta Pride 81M | 74.65 |
| Mytty Countess 906 | Sitz Alliance 6595# | \$F |
| | Baldrige Countess 357 | 46.64 |
| | Paramont Ambush 2172# | \$G |
| B C C Bushwacker 41-93# | R C Anita T Bando 918903 | 20.08 |
| S R S Kathy 0394N# | G D A R Traveler 044# | \$B |
| Tar Kathy 8003 | Tar Kathy 613 | 80.83 |

| Birth Weight | 205 Weight | Wean Ratio | Sire Avg Birth Wt | Dam Avg Birth Wt | Dam Wean Production |
|--------------|------------|------------|-------------------|------------------|---------------------|
| ET | 782 | ET | 113@85 | 10@76 | 10@109 |

| Angus Association EPDs | | | | | | | |
|------------------------|------|-----|-----|------|------|------|-------|
| CED | BW | WW | YW | Milk | Marb | RE | Fat |
| +6 | +0.6 | +62 | +98 | +28 | +.28 | +.24 | +0.26 |



16 **SRS TOMBSTONE 0854D**
tattoo: 0854D birth: 02/06/16 reg #: 18565259 ET

ANGUS BULL

Sire: **Tombstone 050** Dam: **S R S Kathy 0394N#**

| Birth Weight | 205 Weight | Wean Ratio | \$W | \$F | \$G | \$B |
|--------------|------------|------------|-------|-------|-------|-------|
| ET | 707 | ET | 79.90 | 39.92 | 26.39 | 86.79 |

| Angus Association EPDs | | | | | | | |
|------------------------|------|-----|-----|------|------|------|-------|
| CED | BW | WW | YW | Milk | Marb | RE | Fat |
| +10 | +0.3 | +64 | +96 | +29 | +.39 | +.31 | +0.18 |



LOTS 17-19 FLUSH BROTHERS

- SRS Accolade has put an exciting set of calves in the program this year
- Accolade is a cleaner made Chisum son with lighter birthweights
- His dam is a phenomenal female that has great feet and a beautiful udder
- These flush brothers are soggy, and thick-made and have good performance
- The dam is a donor cow that is extremely attractive and thick with a phenomenal udder
- Heifer Bull Potential



REFERENCE SIRE

SRS Accolade 0336A



REFERENCE DAM

S R S Blackbird 8130U, Dam of Lots 17 - 19

17 **SRS ACCOLADE 1063D**
tattoo: 1063D birth: 02/03/16 reg #: 18563711 ET

ANGUS BULL

| | | | |
|------------------------------|-----------------------------|-----|--------|
| S Chisum 6175# | S Alliance 3313 | \$W | 63.70 |
| SRS Accolade 0336A | S Gloria 464# | \$F | 44.95 |
| Basin Joyce S474# | Brooks Ext 792# | \$G | 15.25 |
| | Basin Joyce 2264 | \$B | 134.22 |
| S A V 004 Density 4336# | S A V 8180 Traveler 004# | | |
| S R S Blackbird 8130U | S A V May 7238 | | |
| Ox Bow Blackbird 888 | Bon View Emulation Ext 473# | | |
| | Ox Bow Blackbird 638 | | |

| Birth Weight | 205 Weight | Wean Ratio | Sire Avg Birth Wt | Dam Avg Birth Wt | Dam Wean Production |
|--------------|------------|------------|-------------------|------------------|---------------------|
| ET | 731 | ET | 30@87 | 7@77 | 7@100 |

| Angus Association EPDs | | | | | | | |
|------------------------|----|-----|-----|------|-------|-------|-------|
| CED | BW | WW | YW | Milk | Marb | RE | Fat |
| +10 | +0 | +56 | +90 | +25 | +1.16 | +0.69 | +0.19 |



18 **SRS ACCOLADE 0910D**
tattoo: 0910D birth: 02/04/16 reg #: 18563712 ET

ANGUS BULL

Sire: **SRS Accolade 0336A** Dam: **S R S Blackbird 8130U**

| Birth Weight | 205 Weight | Wean Ratio | \$W | \$F | \$G | \$B |
|--------------|------------|------------|-------|-------|-------|--------|
| ET | 713 | ET | 65.02 | 47.29 | 26.11 | 146.30 |

| Angus Association EPDs | | | | | | | |
|------------------------|------|-----|-----|------|-------|-------|-------|
| CED | BW | WW | YW | Milk | Marb | RE | Fat |
| +7 | +0.4 | +56 | +90 | +25 | +0.46 | +0.69 | +0.04 |



LOT 18

19 **SRS ACCOLADE 255D**
tattoo: 255D birth: 02/25/16 reg #: 18563713 ET

ANGUS BULL

Sire: **SRS Accolade 0336A** Dam: **S R S Blackbird 8130U**

| Birth Weight | 205 Weight | Wean Ratio | \$W | \$F | \$G | \$B |
|--------------|------------|------------|-------|-------|-------|--------|
| ET | 764 | ET | 63.16 | 41.96 | 22.84 | 134.88 |

| Angus Association EPDs | | | | | | | |
|------------------------|------|-----|-----|------|-------|-------|--------|
| CED | BW | WW | YW | Milk | Marb | RE | Fat |
| +14 | -0.9 | +53 | +86 | +22 | +0.41 | +0.52 | +0.039 |



LOT 19



20**SRS ACCOLADE 8128D**

tattoo: 8128D birth: 01/29/16 reg #: 18547410

ANGUS BULLS Chisum 6175#
SRS Accolade 0336A
Basin Joyce S474#S Alliance 3313
S Gloria 464#
Brooks Ext 792#
Basin Joyce 2264Connealy Onward#
SRS Rose 8128U
Vermilion Rose 7566#Connealy Lead On#
Altune of Conanga 6104
Vermilion Time Out
Vermilion Rose 2041#\$W
48.63
\$F
36.20
\$G
20.06
\$B
124.84

| Birth Weight | 205 Weight | Wean Ratio | Sire Avg Birth Wt | Dam Avg Birth Wt | Dam Wean Production |
|--------------|------------|------------|-------------------|------------------|---------------------|
| 95 | 788 | 109 | 30@87 | 7@86 | 7@104 |

| Angus Association EPDs | | | | | | | |
|------------------------|------|-----|-----|------|------|-----|------|
| CED | BW | WW | YW | Milk | Marb | RE | Fat |
| +6 | +3.3 | +52 | +92 | +30 | +35 | +58 | +038 |

- A powerhouse Accolade son out of a great-uddered, high-producing Onward cow

**REFERENCE DAM**Ox Bow Manor 443
Pathfinder Dam of Lots 21-24**LOT 22****LOTS 21-24
FLUSH BROTHERS**

- These bulls are extremely sound-made attractive-patterned bulls
- The dam is an excellent-footed, great-uddered donor cow that raised the high-selling bull in our 2015 sale and put many replacement females back in the herd

21**SRS ACCOLADE 291D**

tattoo: 291D birth: 03/01/16 reg #: 18563725 ET

ANGUS BULLS Chisum 6175#
SRS Accolade 0336A
Basin Joyce S474#S Alliance 3313
S Gloria 464#
Brooks Ext 792#
Basin Joyce 2264N Bar Emulation EXT#
Ox Bow Manor 443#Emulation N Bar 5522#
N Bar Primrose 2424

Ox Bow Manor 037

V D A R Rito 953#
Ox Bow Manor 555\$W
45.81
\$F
45.22
\$G
7.54
\$B
110.16

| Birth Weight | 205 Weight | Wean Ratio | Sire Avg Birth Wt | Dam Avg Birth Wt | Dam Wean Production |
|--------------|------------|------------|-------------------|------------------|---------------------|
| ET | 741 | ET | 30@87 | 9@77 | 8@101 |

| Angus Association EPDs | | | | | | | |
|------------------------|------|-----|-----|------|------|-----|------|
| CED | BW | WW | YW | Milk | Marb | RE | Fat |
| +0 | +3.6 | +51 | +86 | +25 | +27 | +18 | +073 |

**22****SRS ACCOLADE 1017D**

tattoo: 1017D birth: 03/01/16 reg #: 18563718 ET

ANGUS BULLSire: **SRS Accolade 0336A** Dam: **Ox Bow Manor 443#**

| Birth Weight | 205 Weight | Wean Ratio | \$W | \$F | \$G | \$B |
|--------------|------------|------------|-------|-------|------|-------|
| ET | 706 | ET | 58.14 | 40.25 | 7.61 | 99.44 |

| Angus Association EPDs | | | | | | | |
|------------------------|------|-----|-----|------|------|-----|-----|
| CED | BW | WW | YW | Milk | Marb | RE | Fat |
| +8 | +1.4 | +48 | +81 | +26 | +2 | +24 | +07 |

**23****SRS ACCOLADE 0671D**

tattoo: 0671D birth: 02/03/16 reg #: 18563717 ET

ANGUS BULLSire: **SRS Accolade 0336A** Dam: **Ox Bow Manor 443#**

| Birth Weight | 205 Weight | Wean Ratio | \$W | \$F | \$G | \$B |
|--------------|------------|------------|-------|-------|-------|--------|
| ET | 748 | ET | 49.16 | 34.87 | 12.90 | 114.81 |

| Angus Association EPDs | | | | | | | |
|------------------------|------|-----|-----|------|------|-----|------|
| CED | BW | WW | YW | Milk | Marb | RE | Fat |
| +5 | +1.9 | +48 | +81 | +23 | +32 | +25 | +059 |

**24****SRS ACCOLADE 0661D**

tattoo: 0661D birth: 02/07/16 reg #: 18563716 ET

ANGUS BULLSire: **SRS Accolade 0336A** Dam: **Ox Bow Manor 443#**

| Birth Weight | 205 Weight | Wean Ratio | \$W | \$F | \$G | \$B |
|--------------|------------|------------|-------|-------|-------|-------|
| ET | 646 | ET | 51.55 | 34.66 | -1.60 | 88.84 |

| Angus Association EPDs | | | | | | | |
|------------------------|------|-----|-----|------|------|-----|------|
| CED | BW | WW | YW | Milk | Marb | RE | Fat |
| +5 | +1.5 | +45 | +76 | +27 | +12 | +01 | +077 |

**It's the Little Things . . .**

I have been purchasing bulls from the Skinner Ranch for almost 15 years. I continue to purchase bulls there for the little things they are constantly striving to improve within their program. Their focus on disposition, udder structure, teat size, feet and legs, pelvic width and reproductive efficiency are just some of the things that are critical to all commercial operations. I have seen them pass up getting bigger several times to not sacrifice quality. In short, I continue purchasing bulls from the Skinner Ranch because of what I see them continue to do with their females and how that influences my herd.

Jason Parker • Parker Cattle Co. • Logan, Utah





REFERENCE SIRE

Leachman Consensus 4566



REFERENCE SIRE

Musgrave Big Sky

25 SRS BLACKHAWK 3222D
tattoo: 3222D birth: 02/05/16 reg #: 18547434

| | | | | |
|--------------------------------|--------------------------|---|-----|-------|
| ANGUS BULL | Connealy Consensus 7229# | Connealy Consensus Blue Lilly of Conanga 16 | \$W | 71.29 |
| Leachman Consensus 4566 | Leachman Burgess 7205 | N Bar Emulation EXT# Leachman Burgess 9011 | \$F | 53.80 |
| | Tombstone 050 | Sitz Upward 307R# Mytty Countess 906 | \$G | 24.35 |
| SRS Manor 3222A | Ox Bow Manor 443# | N Bar Emulation EXT# Ox Bow Manor 037 | \$B | 96.01 |

| Birth Weight | 205 Weight | Wean Ratio | Sire Avg Birth Wt | Dam Avg Birth Wt | Dam Wean Production |
|--------------|------------|------------|-------------------|------------------|---------------------|
| 82 | 809 | 112 | 20@89 | 2@78 | 2@107 |

| Angus Association EPDs | | | | | | | |
|------------------------|------|-----|-----|------|------|-------|------|
| CED | BW | WW | YW | Milk | Marb | RE | Fat |
| +10 | -0.9 | +57 | +95 | +31 | +61 | +1.15 | +074 |

- Leachman Consensus 4566 was our top pick out of the 2015 Leachman Sale
- We picked him for his attractive pattern and thickness as well as having a well-made, good-uddered dam
- Lot 25 is a big performance bull that has lots of length and dimension
- His dam is a moderate, well-made cow that has an ideal udder
- Her full sister was a top-selling heifer at NILE in 2015
- Heifer Bull Potential



26 SRS BLACKHAWK 8140D
tattoo: 8140D birth: 02/29/16 reg #: 18547433

| | | | | |
|--------------------------------|--------------------------|---|-----|-------|
| ANGUS BULL | Connealy Consensus 7229# | Connealy Consensus Blue Lilly of Conanga 16 | \$W | 52.30 |
| Leachman Consensus 4566 | Leachman Burgess 7205 | N Bar Emulation EXT# Leachman Burgess 9011 | \$F | 34.16 |
| | Sitz Onward 495R | Connealy Onward# Sitz Pride 150 | \$G | 25.06 |
| SRS Kathy 8140U | Tar Kathy 8003 | G D A R Traveler 044# Tar Kathy 613 | \$B | 62.84 |

| Birth Weight | 205 Weight | Wean Ratio | Sire Avg Birth Wt | Dam Avg Birth Wt | Dam Wean Production |
|--------------|------------|------------|-------------------|------------------|---------------------|
| 86 | 723 | 100 | 20@89 | 7@80 | 7@99 |

| Angus Association EPDs | | | | | | | |
|------------------------|----|-----|-----|------|------|-------|-----|
| CED | BW | WW | YW | Milk | Marb | RE | Fat |
| +5 | +1 | +47 | +81 | +27 | +50 | +0.09 | +06 |

- An attractive-patterned bull with good thickness
- The dam is a moderate cow with a perfect udder



27 SRS BIG SKY 848D
tattoo: 848D birth: 03/20/16 reg #: 18557816

| | | | | |
|-------------------------|----------------------|---|-----|-------|
| ANGUS BULL | Connealy Earnan 076E | Connealy Consensus Brazila of Conanga 3991 839A | \$W | 56.38 |
| Musgrave Big Sky | SAV Primrose 7861 | S A F 598 Bando 5175# S A V Primrose 8244# | \$F | 52.39 |
| | TC Grid Topper 355# | G A R Grid Maker# TC Pride 8067# | \$G | 41.45 |
| Bobcat Witch 848 | Vermilion Witch 9275 | V N A R Famous# Vermilion Witch 5187 | \$B | 85.36 |

| Birth Weight | 205 Weight | Wean Ratio | Sire Avg Birth Wt | Dam Avg Birth Wt | Dam Wean Production |
|--------------|------------|------------|-------------------|------------------|---------------------|
| 97 | 780 | 108 | 1@97 | 6@81 | 6@104 |

| Angus Association EPDs | | | | | | | |
|------------------------|----|-----|-----|------|------|-------|-------|
| CED | BW | WW | YW | Milk | Marb | RE | Fat |
| -3 | +3 | +59 | +95 | +29 | +59 | +3.39 | -.026 |

- Big Sky was a top selling bull out of Musgraves that has seen a lot of use due to his moderate birth weights and excellent performance
- Lot 27 is an extremely thick, high performing bull that is a little younger out of an attractive dam



DON'T MISS AN OPPORTUNITY

How much is a top end bull worth?

Increase in pounds per calf as a result of a top performing bull

X

Number of cows bred per year

X

Average selling Price of calves for 4 years

=

Extra dollars you can pay for a better Bull

Example: A bull who will add 30 pounds over industry average, bred to 25 cows for 4 years.

30 pounds x 25 cows = 750 pounds x 4 years = 3000 pounds x \$1.30 = \$3900

This bull is then worth \$3900 **more** than a bull who keeps your weaning weights the same.

This is only half or less of the equation because you get the advantage of the replacement females. All good cattlemen that watch their cows know how much better those consistent top end cows do than herd average.

Another big bonus is their fertility and longevity because these are worth more dollars than weaning weights.

Another plus can be a result of selecting genetics out of programs that create labor efficiency in cows by having cows with good dispositions and quality udders.



REFERENCE
SIRE

SRS Balance 0609B

30 SRS BALANCE 2230D
tattoo: 2230D birth: 01/31/16 reg #: 18547438

| | | | |
|--------------------------|-----------------------|------------------------|-----|
| ANGUS BULL | Tombstone 050 | Sitz Upward 307R# | \$W |
| SRS Balance 0609B | Ox Bow Manor 443# | Mytty Countess 906 | \$F |
| | | N Bar Emulation EXT# | \$G |
| | | Ox Bow Manor 037 | \$B |
| | S R S Xhibit 8071X | S R S Update 0157U | \$W |
| SRS Pride 2230Z | Vermilion Pride 3186# | Vermilion Pride 8071 | \$B |
| | | Vermilion Yellowstone# | \$W |
| | | Vermilion Pride 273 | \$B |

| Birth Weight | 205 Weight | Wean Ratio | Sire Avg Birth Wt | Dam Avg Birth Wt | Dam Wean Production |
|--------------|------------|------------|-------------------|------------------|---------------------|
| 87 | 718 | 99 | 9@88 | 3@79 | 3@99 |

| Angus Association EPDs | | | | | | | |
|------------------------|------|-----|-----|------|------|-------|--------|
| CED | BW | WW | YW | Milk | Marb | RE | Fat |
| +8 | -0.1 | +48 | +84 | +25 | +3.4 | -0.06 | +0.058 |

- A long-spined, deep-made bull
- Dam has a great udder
- Heifer Bull Potential



31 SRS BALANCE 506D
tattoo: 506D birth: 02/13/16 reg #: 18547435

| | | | |
|--------------------------|-------------------------|--------------------------|-----|
| ANGUS BULL | Tombstone 050 | Sitz Upward 307R# | \$W |
| SRS Balance 0609B | Ox Bow Manor 443# | Mytty Countess 906 | \$F |
| | | N Bar Emulation EXT# | \$G |
| | | Ox Bow Manor 037 | \$B |
| | B C C Bushwacker 41-93# | Paramont Ambush 2172# | \$W |
| Ox Bow Manor 506# | Ox Bow Manor 235# | R C Anita T Bando 918903 | \$B |
| | | B A R Ext Traveler 205# | \$W |
| | | Ox Bow Manor 037 | \$B |

| Birth Weight | 205 Weight | Wean Ratio | Sire Avg Birth Wt | Dam Avg Birth Wt | Dam Wean Production |
|--------------|------------|------------|-------------------|------------------|---------------------|
| 100 | 738 | 102 | 9@88 | 10@92 | 10@103 |

| Angus Association EPDs | | | | | | | |
|------------------------|------|-----|-----|------|------|-------|--------|
| CED | BW | WW | YW | Milk | Marb | RE | Fat |
| -4 | +2.5 | +48 | +78 | +28 | +4.5 | +0.53 | +0.052 |



REFERENCE
DAM

Ox Bow Manor 506, Pathfinder Dam of Lot 31

32 SRS BALANCE 2206D
tattoo: 2206D birth: 02/11/16 reg #: 18547437

| | | | |
|--------------------------|-------------------|----------------------------|-----|
| ANGUS BULL | Tombstone 050 | Sitz Upward 307R# | \$W |
| SRS Balance 0609B | Ox Bow Manor 443# | Mytty Countess 906 | \$F |
| | | N Bar Emulation EXT# | \$G |
| | | Ox Bow Manor 037 | \$B |
| | TC Total 410# | Bon View New Design 208# | \$W |
| SRS Chloe 2206Z | Basin Chloe 2P31# | TC Erica Eileen 2047 | \$B |
| | | C A Future Direction 5321# | \$W |
| | | Basin Chloe 6102 | \$B |

| Birth Weight | 205 Weight | Wean Ratio | Sire Avg Birth Wt | Dam Avg Birth Wt | Dam Wean Production |
|--------------|------------|------------|-------------------|------------------|---------------------|
| 90 | 705 | 97 | 9@88 | 3@88 | 3@100 |

| Angus Association EPDs | | | | | | | |
|------------------------|------|-----|-----|------|-------|-------|--------|
| CED | BW | WW | YW | Milk | Marb | RE | Fat |
| +1 | +1.6 | +52 | +88 | +27 | +0.55 | +0.38 | +0.021 |



28 SRS BALANCE 8129D
tattoo: 8129D birth: 02/02/16 reg #: 18547436

| | | | |
|------------------------------|-------------------------|-----------------------------|-----|
| ANGUS BULL | Tombstone 050 | Sitz Upward 307R# | \$W |
| SRS Balance 0609B | Ox Bow Manor 443# | Mytty Countess 906 | \$F |
| | | N Bar Emulation EXT# | \$G |
| | | Ox Bow Manor 037 | \$B |
| | S A V 004 Density 4336# | S A V 8180 Traveler 004# | \$W |
| S R S Blackbird 8129U | Ox Bow Blackbird 888 | S A V May 7238 | \$B |
| | | Bon View Emulation Ext 473# | \$W |
| | | Ox Bow Blackbird 638 | \$B |

| Birth Weight | 205 Weight | Wean Ratio | Sire Avg Birth Wt | Dam Avg Birth Wt | Dam Wean Production |
|--------------|------------|------------|-------------------|------------------|---------------------|
| 90 | 774 | 107 | 9@88 | 7@90 | 7@103 |

| Angus Association EPDs | | | | | | | |
|------------------------|------|-----|-----|------|-------|-------|--------|
| CED | BW | WW | YW | Milk | Marb | RE | Fat |
| +6 | -0.3 | +59 | +95 | +26 | +4.45 | +0.21 | +0.064 |

- Balance was the high-selling bull out of our 2015 sale
- He was admired for his length, extreme depth, wide skeletal structure and excellent feet
- Balance calves are exceeding our expectations showing good phenotype and excellent performance
- This son is a powerhouse of a bull that will pass on great performance in his progeny
- Be sure to look this bull up on sale day
- Dam is a well-balanced, good-uddered female



29 SRS BALANCE 3215D
tattoo: 3215D birth: 02/11/16 reg #: 18547439

| | | | |
|--------------------------|--------------------|--------------------------|-----|
| ANGUS BULL | Tombstone 050 | Sitz Upward 307R# | \$W |
| SRS Balance 0609B | Ox Bow Manor 443# | Mytty Countess 906 | \$F |
| | | N Bar Emulation EXT# | \$G |
| | | Ox Bow Manor 037 | \$B |
| | SydGen C C & 7# | S A F Connection# | \$W |
| SRS Kathy 3215A | S R S Kathy 0394N# | SydGen Forever Lady 4087 | \$B |
| | | B C C Bushwacker 41-93# | \$W |
| | | Tar Kathy 8003 | \$B |

| Birth Weight | 205 Weight | Wean Ratio | Sire Avg Birth Wt | Dam Avg Birth Wt | Dam Wean Production |
|--------------|------------|------------|-------------------|------------------|---------------------|
| 93 | 743 | 103 | 9@88 | 2@90 | 2@107 |

| Angus Association EPDs | | | | | | | |
|------------------------|------|-----|-----|------|-------|-------|--------|
| CED | BW | WW | YW | Milk | Marb | RE | Fat |
| -3 | +2.4 | +51 | +84 | +31 | +4.46 | +0.19 | +0.045 |

- Another solid made bull out of a moderate, high performing CC&7 daughter



MATERNAL
BROTHER

SRS Accolade 3215C, Maternal Brother to Lot 29



LOT
33



REFERENCE
SIRE

Soo Line Motive 9016



REFERENCE
DAM

S R S Rose 6148S, Pathfinder Dam of Lots 33-35

**LOTS 33-35
FLUSH BROTHERS**

- Motive is a bull that we added to our program for his light BW and extremely attractive patterned progeny and great feet
- The dam is an exceptionally long, deep, and thick female with a great udder
- These brothers are impressive, they are long, correct, square and five full brothers were highly sought after in our 2016 sale
- Heifer Bull Potential

33 **SRS MOTIVE 8126D**
tattoo: 8126D birth: 02/02/16 reg #: 18565253 ET

ANGUS BULL

HF Kodiak 5R
Soo Line Motive 9016
TLA Beauty 5R

S A V 004 Density 4336#

S R S Rose 6148S#

Vermilion Rose 7566#

Sandy Bar Advantage 43M
Wilbar Ruby 955N

RR 7407 Rainmaker 2154
Terrlene Beauty 35F

S A V 8180 Traveler 004#
S A V May 7238

Vermilion Time Out
Vermilion Rose 2041#

| | |
|-----|--------|
| \$W | 52.38 |
| \$F | 46.94 |
| \$G | 33.31 |
| \$B | 119.97 |

| Birth Weight | 205 Weight | Wean Ratio | Sire Avg Birth Wt | Dam Avg Birth Wt | Dam Wean Production |
|--------------|------------|------------|-------------------|------------------|---------------------|
| ET | 713 | ET | 52@86 | 7@91 | 6@105 |

| Angus Association EPDs | | | | | | | |
|------------------------|------|-----|-----|------|------|------|------|
| CED | BW | WW | YW | Milk | Marb | RE | Fat |
| +10 | +1.3 | +50 | +88 | +29 | +7.0 | +3.4 | +0.4 |



MATERNAL
BROTHER

SRS Caliber 385C, Maternal Brother to Lots 33-35

34 **SRS MOTIVE 1184D**
tattoo: 1184D birth: 02/07/16 reg #: 18565250 ET

ANGUS BULL

Sire: Soo Line Motive 9016 Dam: S R S Rose 6148S#

| Birth Weight | 205 Weight | Wean Ratio | \$W | \$F | \$G | \$B |
|--------------|------------|------------|-------|-------|-------|--------|
| ET | 676 | ET | 51.80 | 43.81 | 30.16 | 109.53 |

| Angus Association EPDs | | | | | | | |
|------------------------|------|-----|-----|------|------|------|-------|
| CED | BW | WW | YW | Milk | Marb | RE | Fat |
| +11 | +1.9 | +50 | +86 | +28 | +6.3 | +2.5 | +0.44 |



35 **SRS MOTIVE 1243D**
tattoo: 1243D birth: 02/07/16 reg #: 18565251 ET

ANGUS BULL

Sire: Soo Line Motive 9016 Dam: S R S Rose 6148S#

| Birth Weight | 205 Weight | Wean Ratio | \$W | \$F | \$G | \$B |
|--------------|------------|------------|-------|-------|-------|--------|
| ET | 637 | ET | 42.72 | 31.77 | 28.74 | 100.78 |

| Angus Association EPDs | | | | | | | |
|------------------------|------|-----|-----|------|------|------|-------|
| CED | BW | WW | YW | Milk | Marb | RE | Fat |
| +13 | +0.9 | +46 | +79 | +22 | +5.6 | +2.8 | +0.44 |



MATERNAL
BROTHER

SRS Motive 1063C, Maternal Brother to Lot 33-35



REFERENCE
SIRE

Stevenson Rockmount RX933

38 SRS ROCKMOUNT 8146D
tattoo: 8146D birth: 02/08/16 reg #: 18564474

| | | | | | | | |
|----------------------------------|------------------------|---------------|--|--|--|--|--|
| ANGUS BULL | | | | | | | |
| MCC Daybreak# | Boyd New Day 8005# | \$W | | | | | |
| Stevenson Rockmount RX933 | MCC Miss Focus 134# | 39.91 | | | | | |
| FSHK Pride 180# | Sitz Alliance 6595# | \$F | | | | | |
| | FSHK Pride 725 | 46.74 | | | | | |
| | Connealy Onward# | \$G | | | | | |
| S R S Pride 8146U | Connealy Lead On# | 35.57 | | | | | |
| North Fork Pride 8129 | Altune of Conanga 6104 | \$B | | | | | |
| | Sitz Traveler 9929# | 122.02 | | | | | |
| | Hyline Pride 265 | | | | | | |

| Birth Weight | 205 Weight | Wean Ratio | Sire Avg Birth Wt | Dam Avg Birth Wt | Dam Wean Production |
|--------------|------------|------------|-------------------|------------------|---------------------|
| 95 | 719 | 99 | 18@83 | 7@90 | 7@99 |

| Angus Association EPDs | | | | | | | |
|------------------------|------|-----|-----|------|------|-----|------|
| CED | BW | WW | YW | Milk | Marb | RE | Fat |
| +8 | +2.6 | +56 | +97 | +22 | +64 | +70 | +038 |

- An extremely thick bull that is out of a long, broody COW



Angus Bulls

36 SRS ROCKMOUNT 4232D
tattoo: 4232D birth: 01/28/16 reg #: 18564405

| | | | | | | | |
|----------------------------------|----------------------|--------------|--|--|--|--|--|
| ANGUS BULL | | | | | | | |
| MCC Daybreak# | Boyd New Day 8005# | \$W | | | | | |
| Stevenson Rockmount RX933 | MCC Miss Focus 134# | 58.71 | | | | | |
| FSHK Pride 180# | Sitz Alliance 6595# | \$F | | | | | |
| | FSHK Pride 725 | 33.96 | | | | | |
| | SRS Western 8124Z | \$G | | | | | |
| SRS Lass 4232B | Tombstone 050 | 31.43 | | | | | |
| S R S Right Time Lass 0399N | S R S Rose 8124U | \$B | | | | | |
| | Leachman Right Time# | 98.76 | | | | | |
| | Vermilion Lass 4614 | | | | | | |

| Birth Weight | 205 Weight | Wean Ratio | Sire Avg Birth Wt | Dam Avg Birth Wt | Dam Wean Production |
|--------------|------------|------------|-------------------|------------------|---------------------|
| 85 | 734 | 101 | 18@83 | 1@85 | 1@101 |

| Angus Association EPDs | | | | | | | |
|------------------------|------|-----|-----|------|------|-----|------|
| CED | BW | WW | YW | Milk | Marb | RE | Fat |
| +12 | +0.9 | +54 | +84 | +22 | +56 | +53 | +054 |

- Rockmount is a bull that we used for his attractive pattern, light birth weight and good performance
- Lot 36 is a thick-made bull out of an attractive, great-udered Western daughter
- Heifer Bull Potential



37 SRS ROCKMOUNT 2209D
tattoo: 2209D birth: 02/10/16 reg #: 18564473

| | | | | | | | |
|----------------------------------|---------------------|---------------|--|--|--|--|--|
| ANGUS BULL | | | | | | | |
| MCC Daybreak# | Boyd New Day 8005# | \$W | | | | | |
| Stevenson Rockmount RX933 | MCC Miss Focus 134# | 67.71 | | | | | |
| FSHK Pride 180# | Sitz Alliance 6595# | \$F | | | | | |
| | FSHK Pride 725 | 54.11 | | | | | |
| | Tombstone 050 | \$G | | | | | |
| SRS Joyce 2209Z | Sitz Upward 307R# | 25.07 | | | | | |
| Basin Joyce S474# | Mytty Countess 906 | \$B | | | | | |
| | Brooks Ext 792# | 107.15 | | | | | |
| | Basin Joyce 2264 | | | | | | |

| Birth Weight | 205 Weight | Wean Ratio | Sire Avg Birth Wt | Dam Avg Birth Wt | Dam Wean Production |
|--------------|------------|------------|-------------------|------------------|---------------------|
| 95 | 734 | 101 | 18@83 | 3@90 | 2@109 |

| Angus Association EPDs | | | | | | | |
|------------------------|------|-----|------|------|------|-----|------|
| CED | BW | WW | YW | Milk | Marb | RE | Fat |
| +8 | +0.8 | +59 | +100 | +28 | +44 | +44 | +045 |

- A very explosive-patterned bull out of a flush sister to SRS Gunslinger



Good Advice and Honest Feedback

Bill and Penny Root of Scotia, Nebraska run 180 cows at a family farm on the eastern edge of the Sandhills. We purchased our first two Optimizer bulls from Skinner Ranch in 2004 and have been satisfied customers ever since.

The herd we started with 35 years ago included females purchased from a couple different seedstock producers and some black baldy lease cows. There was not a lot of uniformity in terms of size, type, temperament or nutritional needs and there were health concerns to address. We made some improvement over time, but when we brought in the Skinner bulls, we began to see very encouraging progress.

Weaning weights increased while the cow size moderated. The udder and prolapse problems that plagued us were eliminated. From year one, we were impressed with the vigor and will-to-live of the baby calves. It's very unusual to have any type of calving problem. These really are problem-free cattle.

The herd adapts so well to changes in available feedstuff. They are easy keepers and make great use of winter forage. We especially appreciate the disposition of the Skinner Ranch bulls, as either one of us can walk out in the pen or pasture and move them.

Our marketing plan depends on the resources available and what we think the market will do. Some years we sell shortly after weaning and other years we grow the calves for a while. Either way the cattle have been profitable and we're so pleased with how they look in the ring. Lots of length and thickness, adequate frame and very uniform. The maternal traits they emphasize, such as soundness, good udders and longevity are very predictable in females sired by their bulls and retained in the herd.

One reason the bulls have worked so well for us is the good advice we've gotten from Ron, Tim and Kim over the years. They've seen our cows and listened to what our needs are, and given very honest feedback about which bulls might be a fit. We've had a few opportunities to stop at their ranch but we made all our selections based on the catalog and videos along with talking to the Skinner family. They are trustworthy and really care about their customers' satisfaction. Skinner Ranch Seedstock bulls prove their value in our herd and they are the only kind we own.

Bill & Penny Root • Scotia, NE





REFERENCE
SIRE

Leachman Right Time



REFERENCE
DAM

S R S Kathy 0394N, Pathfinder Dam of Lots 39-42

LOTS 39-42 FLUSH BROTHERS


- Right Time needs no introduction as he is well-known for producing great females
- These sons are attractive, long, and eye-appealing
- They will put an extraordinary set of replacement daughters back in your herd
- The dam is the biggest spread cow from birth to weaning that we have owned
- She is a long, deep, thick cow with a nice udder and good feet
- We will be continuing on with these genetics in our program

39 **SRS RIGHTTIME 938D**
tattoo: 938D birth: 03/04/16 reg #: 18565201 ET
ANGUS BULL

| | | |
|---|---|--|
| N Bar Emulation EXT# Leachman Right Time Leachman Erica 0025 | Emulation N Bar 5522# N Bar Primrose 2424 Tehama Bando 155# Leachman Erica 8058 | \$W 47.93 \$F 31.68 \$G 20.25 \$B 95.50 |
| B C C Bushwacker 41-93# S R S Kathy 0394N# Tar Kathy 8003 | Paramont Ambush 2172# R C Anita T Bando 918903 G D A R Traveler 044# Tar Kathy 613 | |

| Birth Weight | 205 Weight | Wean Ratio | Sire Avg Birth Wt | Dam Avg Birth Wt | Dam Wean Production |
|--------------|------------|------------|-------------------|------------------|---------------------|
| ET | 727 | ET | 33@87 | 10@76 | 10@109 |

| Angus Association EPDs | | | | | | | |
|------------------------|------|-----|-----|------|------|------|------|
| CED | BW | WW | YW | Milk | Marb | RE | Fat |
| +6 | +1.5 | +47 | +76 | +25 | +30 | +1.7 | +0.2 |





LOT
39

40 **SRS RIGHTTIME 0467D**
tattoo: 0467D birth: 02/11/16 reg #: 18565199 ET
ANGUS BULL

Sire: Leachman Right Time Dam: S R S Kathy 0394N#

| Birth Weight | 205 Weight | Wean Ratio | \$W | \$F | \$G | \$B |
|--------------|------------|------------|-------|-------|------|-------|
| ET | 748 | ET | 35.10 | 27.53 | 9.43 | 65.84 |

| Angus Association EPDs | | | | | | | |
|------------------------|------|-----|-----|------|------|------|-------|
| CED | BW | WW | YW | Milk | Marb | RE | Fat |
| +5 | +2.3 | +38 | +67 | +22 | +0.4 | +0.4 | +0.07 |




41 **SRS RIGHTTIME 196D**
tattoo: 196D birth: 03/10/16 reg #: 18565200 ET
ANGUS BULL

Sire: Leachman Right Time Dam: S R S Kathy 0394N#

| Birth Weight | 205 Weight | Wean Ratio | \$W | \$F | \$G | \$B |
|--------------|------------|------------|-------|-------|-------|--------|
| ET | 764 | ET | 48.19 | 34.17 | 39.19 | 105.35 |

| Angus Association EPDs | | | | | | | |
|------------------------|------|-----|-----|------|------|------|-------|
| CED | BW | WW | YW | Milk | Marb | RE | Fat |
| +6 | +2.1 | +49 | +79 | +24 | +6 | +1.6 | -.044 |




42 **SRS RIGHTTIME 0667D**
tattoo: 0667D birth: 02/08/16 reg #: 18565202 ET
ANGUS BULL

Sire: Leachman Right Time Dam: S R S Kathy 0394N#

| Birth Weight | 205 Weight | Wean Ratio | \$W | \$F | \$G | \$B |
|--------------|------------|------------|-------|-------|-------|-------|
| ET | 703 | ET | 41.14 | 27.53 | 29.69 | 97.49 |

| Angus Association EPDs | | | | | | | |
|------------------------|----|-----|-----|------|------|------|-------|
| CED | BW | WW | YW | Milk | Marb | RE | Fat |
| +4 | +2 | +42 | +71 | +24 | +4.1 | +2.5 | -.006 |




LOTS 45-46 FLUSH BROTHERS

- Two long made bulls that are out of a phenomenal donor cow
- The dam is a long-sided, great-uddered female with excellent production
- Heifer Bull Potential



REFERENCE
SIRE

HF Bank Roll 84B

45 SRS BANKROLL 063D
tattoo: 063D birth: 02/25/16 reg #: 18563722 ET

| | | | | | | | |
|---------------------------|-------------------------|-----|--|--|--|--|--------------|
| ANGUS BULL | | | | | | | |
| HF Smokin' Aces 105Y | Greens Premium 7578 | \$W | | | | | |
| HF Bank Roll 84B | HR Erica 26T | | | | | | 36.82 |
| HF Miss Lucy 268Z | Southland Exclusive 62U | \$F | | | | | |
| | HF Miss Lucy 202W | | | | | | 20.67 |
| | Connealy Onward# | \$G | | | | | |
| S R S Kathy 7142T# | Altune of Conanga 6104 | | | | | | 16.29 |
| S R S Kathy 0394N# | B C C Bushwacker 41-93# | \$B | | | | | |
| | Tar Kathy 8003 | | | | | | 76.39 |

| Birth Weight | 205 Weight | Wean Ratio | Sire Avg Birth Wt | Dam Avg Birth Wt | Dam Wean Production |
|--------------|------------|------------|-------------------|------------------|---------------------|
| ET | 781 | 100 | 35@82 | 6@85 | 6@109 |

| Angus Association EPDs | | | | | | | |
|------------------------|------|-----|-----|------|-------|-------|-------|
| CED | BW | WW | YW | Milk | Marb | RE | Fat |
| +14 | -0.1 | +41 | +75 | +22 | +1.15 | +2.28 | +0.07 |



46 SRS BANKROLL 592D
tattoo: 592B birth: 03/01/16 reg #: 18563723 ET

Sire: **HF Bank Roll 84B** Dam: **S R S Kathy 7142T#**

| Birth Weight | 205 Weight | Wean Ratio | \$W | \$F | \$G | \$B |
|--------------|------------|------------|-------|-------|-------|-------|
| ET | 654 | ET | 48.04 | 22.56 | 31.71 | 98.28 |

| Angus Association EPDs | | | | | | | |
|------------------------|------|-----|-----|------|-------|-------|-------|
| CED | BW | WW | YW | Milk | Marb | RE | Fat |
| +17 | -0.8 | +42 | +75 | +26 | +1.55 | +1.32 | +0.23 |



REFERENCE
DAM

S R S Kathy 7142T, Pathfinder Dam of Lots 45 and 46

47 SRS BANKROLL 4273D
tattoo: 4273D birth: 01/26/16 reg #: 18547459

| | | | | | | | |
|-------------------------|-------------------------|-----|--|--|--|--|---------------|
| ANGUS BULL | | | | | | | |
| HF Smokin' Aces 105Y | Greens Premium 7578 | \$W | | | | | |
| HF Bank Roll 84B | HR Erica 26T | | | | | | 45.79 |
| HF Miss Lucy 268Z | Southland Exclusive 62U | \$F | | | | | |
| | HF Miss Lucy 202W | | | | | | 33.31 |
| | Tombstone 050 | \$G | | | | | |
| SRS Zone Defense 755Z | Basin Blackbird R262# | | | | | | 25.79 |
| SRS Joyce 4273B | Brooks Ext 792# | \$B | | | | | |
| Basin Joyce S474# | Basin Joyce 2264 | | | | | | 106.80 |

| Birth Weight | 205 Weight | Wean Ratio | Sire Avg Birth Wt | Dam Avg Birth Wt | Dam Wean Production |
|--------------|------------|------------|-------------------|------------------|---------------------|
| 89 | 715 | 99 | 35@82 | 1@89 | 1@99 |

| Angus Association EPDs | | | | | | | |
|------------------------|------|-----|-----|------|-------|-------|-------|
| CED | BW | WW | YW | Milk | Marb | RE | Fat |
| +4 | +1.4 | +50 | +83 | +23 | +1.47 | +1.16 | +0.19 |



- A super-thick, attractive-made bull, out of a nice young cow

43 SRS BANKROLL 7169D
tattoo: 7169D birth: 02/27/16 reg #: 18547452

| | | | | | | | |
|--------------------------|-------------------------|-----|--|--|--|--|--------------|
| ANGUS BULL | | | | | | | |
| HF Smokin' Aces 105Y | Greens Premium 7578 | \$W | | | | | |
| HF Bank Roll 84B | HR Erica 26T | | | | | | 43.06 |
| HF Miss Lucy 268Z | Southland Exclusive 62U | \$F | | | | | |
| | HF Miss Lucy 202W | | | | | | 21.96 |
| | Connealy Onward# | \$G | | | | | |
| S R S Pride 7169T | Altune of Conanga 6104 | | | | | | 22.96 |
| Vermilion Pride 8071 | Leachman Right Time# | \$B | | | | | |
| | Vermilion Pride 6446# | | | | | | 88.40 |

| Birth Weight | 205 Weight | Wean Ratio | Sire Avg Birth Wt | Dam Avg Birth Wt | Dam Wean Production |
|--------------|------------|------------|-------------------|------------------|---------------------|
| 82 | 740 | 102 | 35@82 | 8@93 | 7@111 |

| Angus Association EPDs | | | | | | | |
|------------------------|------|-----|-----|------|-------|-------|-------|
| CED | BW | WW | YW | Milk | Marb | RE | Fat |
| +14 | +0.5 | +44 | +81 | +26 | +1.38 | +1.10 | +0.09 |



- We bought Bank Roll from Hamilton Farms in Canada
- We picked Bank Roll out for his light BW, eye appeal, outcross pedigree, and impeccable feet
- Dam was an eye appealing cow with good feet and great udder
- This son is a long-made, light BW bull out of an extremely high performance dam
- Heifer Bull Potential

44 SRS BANKROLL 2238D
tattoo: 2238D birth: 03/01/16 reg #: 18547453

| | | | | | | | |
|-----------------------------|----------------------------|-----|--|--|--|--|--------------|
| ANGUS BULL | | | | | | | |
| HF Smokin' Aces 105Y | Greens Premium 7578 | \$W | | | | | |
| HF Bank Roll 84B | HR Erica 26T | | | | | | 38.05 |
| HF Miss Lucy 268Z | Southland Exclusive 62U | \$F | | | | | |
| | HF Miss Lucy 202W | | | | | | 52.15 |
| | Connealy Right Answer 746# | \$G | | | | | |
| WK Bobcat | WK Miss Angus 7127# | | | | | | 24.97 |
| SRS Eliminator 2238Z | Vermilion Yellowstone# | \$B | | | | | |
| Vermilion Eliminator 1338# | Vermilion Eliminator 7191 | | | | | | 84.65 |

| Birth Weight | 205 Weight | Wean Ratio | Sire Avg Birth Wt | Dam Avg Birth Wt | Dam Wean Production |
|--------------|------------|------------|-------------------|------------------|---------------------|
| 100 | 797 | 110 | 35@82 | 3@93 | 3@105 |

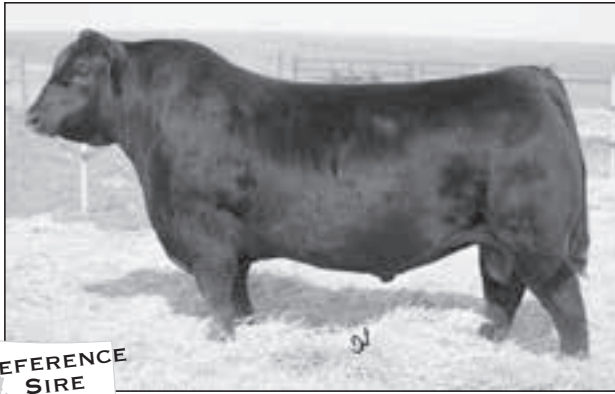
| Angus Association EPDs | | | | | | | |
|------------------------|------|-----|-----|------|-------|-------|-------|
| CED | BW | WW | YW | Milk | Marb | RE | Fat |
| +1 | +4.1 | +50 | +91 | +20 | +1.35 | +1.06 | -0.02 |



- A long, thick-made bull with a lot of eye appeal



LOT
44



REFERENCE SIRE

R B Tour of Duty 177

48

SRS DUTY 7228D

tattoo: 7228D birth: 02/08/16 reg #: 18564614

ANGUS BULL

Werner War Party 2417#
R B Tour Of Duty 177
 B A Lady 6807 305

Woodhill Foresight#
Ox Bow Forever Lady 7228
 Ox Bow Forever Lady 350

Connealy Onward#
 BAAR USA Lady Jaye 489
 Vermilion Dateline 7078#
 G D Lady Hi Flyer 302
 Papa Forte 1921#
 Bon View Gammer 85
 Leachman Oxbow
 Gdar Forever Lady 6180

\$W
50.28
 \$F
51.07
 \$G
43.14
 \$B
146.58

| Birth Weight | 205 Weight | Wean Ratio | Sire Avg Birth Wt | Dam Avg Birth Wt | Dam Wean Production |
|--------------|------------|------------|-------------------|------------------|---------------------|
| 96 | 729 | 101 | 17@91 | 6@91 | 6@107 |

| Angus Association EPDs | | | | | | | |
|------------------------|------|-----|-----|------|------|-----|-------|
| CED | BW | WW | YW | Milk | Marb | RE | Fat |
| +0 | +2.4 | +53 | +94 | +27 | +62 | +81 | -.042 |

- Tour of Duty has been heavily used in the breed and produces calves with a lot of length
- Lot 48 is an exciting bull that has tremendous eye appeal and thickness
- The dam is a feminine-made Foresight daughter that has excellent performance



LOT 48



REFERENCE DAM

Ox Bow Forever Lady 7228, Dam of Lot 48

49

SRS DUTY 4243D

tattoo: 4243D birth: 01/27/16 reg #: 18564504

ANGUS BULL

Werner War Party 2417#
R B Tour Of Duty 177
 B A Lady 6807 305

Musgrave Foundation
SRS Joyce 4243B
 SRS Joyce 2207Z

Connealy Onward#
 BAAR USA Lady Jaye 489
 Vermilion Dateline 7078#
 G D Lady Hi Flyer 302
 Kesslers Frontman R001#
 MCATL Blackcap Juara 29-434
 Tombstone 050
 Basin Joyce S474#

\$W
77.06
 \$F
88.16
 \$G
30.29
 \$B
150.63

| Birth Weight | 205 Weight | Wean Ratio | Sire Avg Birth Wt | Dam Avg Birth Wt | Dam Wean Production |
|--------------|------------|------------|-------------------|------------------|---------------------|
| 85 | 776 | 107 | 17@91 | 1@85 | 1@107 |

| Angus Association EPDs | | | | | | | |
|------------------------|------|-----|------|------|------|-----|------|
| CED | BW | WW | YW | Milk | Marb | RE | Fat |
| +4 | +2.3 | +73 | +124 | +28 | +64 | +57 | +037 |

- A high-performance bull with numbers to match



50

SRS DUTY 0957D

tattoo: 0957D birth: 02/09/16 reg #: 18565398 ET

ANGUS BULL

Werner War Party 2417#
R B Tour Of Duty 177
 B A Lady 6807 305

Brooks Ext 792#
Basin Joyce S474#
 Basin Joyce 2264

Connealy Onward#
 BAAR USA Lady Jaye 489
 Vermilion Dateline 7078#
 G D Lady Hi Flyer 302
 N Bar Emulation EXT#
 Princess 4103 B C B R
 Basin Ambush 843L
 Basin Joyce 508M

\$W
54.96
 \$F
48.34
 \$G
26.37
 \$B
129.05

| Birth Weight | 205 Weight | Wean Ratio | Sire Avg Birth Wt | Dam Avg Birth Wt | Dam Wean Production |
|--------------|------------|------------|-------------------|------------------|---------------------|
| ET | 787 | ET | 17@91 | 8@83 | 7@106 |

| Angus Association EPDs | | | | | | | |
|------------------------|------|-----|-----|------|------|-----|-------|
| CED | BW | WW | YW | Milk | Marb | RE | Fat |
| +8 | +0.4 | +51 | +88 | +28 | +30 | +44 | -.031 |

- An extremely long-spined bull whose donor dam has a beautiful phenotype, perfect udder, and phenomenal feet
- Heifer Bull Potential



REFERENCE DAM

Basin Joyce S474, Pathfinder Dam of Lot 50



51**SRS DUTY 433D**

tattoo: 433D birth: 02/19/16 reg #: 18565404

ANGUS BULL

Werner War Party 2417#
R B Tour Of Duty 177
 B A Lady 6807 305

Connealy Onward#
 BAAR USA Lady Jaye 489
 Vermilion Dateline 7078#
 G D Lady Hi Flyer 302

G A R Expectation 4915#

Ox Bow Lucy 433

Ox Bow Lucy 187

N Bar Emulation EXT#
 G A R Traveler 2421
 Sitz Traveler 9929#
 North Fork Lucy 6070

\$W
56.84
 \$F
66.68
 \$G
36.29
 \$B
158.45

| Birth Weight | 205 Weight | Wean Ratio | Sire Avg Birth Wt | Dam Avg Birth Wt | Dam Wean Production |
|--------------|------------|------------|-------------------|------------------|---------------------|
| 94 | 746 | 103 | 17@91 | 10@90 | 10@103 |

| Angus Association EPDs | | | | | | | |
|------------------------|------|-----|------|------|------|-----|------|
| CED | BW | WW | YW | Milk | Marb | RE | Fat |
| +2 | +3.6 | +61 | +105 | +27 | +66 | +75 | +015 |

- A solid bull out of a moderate, beautifully made cow



REFERENCE SIRE

TR Mr Aberdeen 1068Y

54**SRS ABERDEEN 9133D**

tattoo: 9133D birth: 02/06/16 reg #: 18564538

ANGUS BULL

TC Aberdeen 759#
TR Mr Aberdeen 1068Y
 TR Ms Erica 8035U

C R A Bextor 872 5205 608#
 TC Blackbird 4034#
 S S Objective T510 0T26#
 TR Ms Erica 5052R

Connealy Onward#
S R S Emma 9133W#
 Ox Bow Emma E 732

Connealy Lead On#
 Altune of Conanga 6104
 N Bar Emulation EXT#
 Ox Bow Emma E 512

\$W
45.84
 \$F
40.80
 \$G
34.68
 \$B
107.62

| Birth Weight | 205 Weight | Wean Ratio | Sire Avg Birth Wt | Dam Avg Birth Wt | Dam Wean Production |
|--------------|------------|------------|-------------------|------------------|---------------------|
| 95 | 796 | 110 | 12@83 | 6@94 | 6@107 |

| Angus Association EPDs | | | | | | | |
|------------------------|------|-----|-----|------|------|-----|------|
| CED | BW | WW | YW | Milk | Marb | RE | Fat |
| +6 | +1.5 | +49 | +89 | +24 | +51 | +55 | +005 |

- Mr. Aberdeen is an attractive made bull with great depth and a lighter BW
- This son is an extremely long, thick, stout-made bull out of a high performance female

**52****SRS DUTY 6144D**

tattoo: 6144D birth: 02/06/16 reg #: 18564636

ANGUS BULL

Werner War Party 2417#
R B Tour Of Duty 177
 B A Lady 6807 305

Connealy Onward#
 BAAR USA Lady Jaye 489
 Vermilion Dateline 7078#
 G D Lady Hi Flyer 302

S A V 8180 Traveler 004#

S R S Pride 6144S

Vermilion Pride 8071

Sitz Traveler 8180#
 Boyd Forever Lady 8003
 Leachman Right Time#
 Vermilion Pride 6446#

\$W
60.51
 \$F
69.74
 \$G
32.05
 \$B
146.96

| Birth Weight | 205 Weight | Wean Ratio | Sire Avg Birth Wt | Dam Avg Birth Wt | Dam Wean Production |
|--------------|------------|------------|-------------------|------------------|---------------------|
| 82 | 767 | 106 | 17@91 | 8@80 | 8@100 |

| Angus Association EPDs | | | | | | | |
|------------------------|----|-----|------|------|------|-----|-----|
| CED | BW | WW | YW | Milk | Marb | RE | Fat |
| +6 | +1 | +61 | +107 | +25 | +68 | +38 | +02 |

- A stretchy, soggy made bull out of an extremely attractive 004 daughter

**53****SRS DUTY 3253D**

tattoo: 3253D birth: 02/14/16 reg #: 18564525

ANGUS BULL

Werner War Party 2417#
R B Tour Of Duty 177
 B A Lady 6807 305

Connealy Onward#
 BAAR USA Lady Jaye 489
 Vermilion Dateline 7078#
 G D Lady Hi Flyer 302

TC Total 410#

SRS Kathy 3253A

S R S Kathy 7142T#

Bon View New Design 208#
 TC Erica Eileen 2047
 Connealy Onward#
 S R S Kathy 0394N#

\$W
37.55
 \$F
66.75
 \$G
37.58
 \$B
141.37

| Birth Weight | 205 Weight | Wean Ratio | Sire Avg Birth Wt | Dam Avg Birth Wt | Dam Wean Production |
|--------------|------------|------------|-------------------|------------------|---------------------|
| 94 | 719 | 99 | 17@91 | 2@84 | 2@99 |

| Angus Association EPDs | | | | | | | |
|------------------------|------|-----|------|------|------|-----|------|
| CED | BW | WW | YW | Milk | Marb | RE | Fat |
| +1 | +3.7 | +59 | +106 | +22 | +48 | +84 | -.03 |

- A smaller made bull that is very stylish, and deep-made with excellent thickness

**56****SRS ABERDEEN 3200D**

tattoo: 3200D birth: 02/09/16 reg #: 18564533

ANGUS BULL

TC Aberdeen 759#
TR Mr Aberdeen 1068Y
 TR Ms Erica 8035U

C R A Bextor 872 5205 608#
 TC Blackbird 4034#
 S S Objective T510 0T26#
 TR Ms Erica 5052R

SRS Yale 0309 Y
SRS Manor 3200A
 Ox Bow Manor 5155

Limestone Great Divide U254
 Ox Bow Eisa Evergreen 226#
 N Bar Emulation EXT#
 Ox Bow Manor 918#

\$W
50.68
 \$F
53.25
 \$G
28.75
 \$B
118.01

| Birth Weight | 205 Weight | Wean Ratio | Sire Avg Birth Wt | Dam Avg Birth Wt | Dam Wean Production |
|--------------|------------|------------|-------------------|------------------|---------------------|
| 92 | 743 | 103 | 12@83 | 2@91 | 2@101 |

| Angus Association EPDs | | | | | | | |
|------------------------|------|-----|-----|------|------|-----|------|
| CED | BW | WW | YW | Milk | Marb | RE | Fat |
| +7 | +1.9 | +50 | +88 | +26 | +31 | +75 | +004 |

- A smaller made bull that is very stylish, and deep-made with excellent thickness



57

SRS ABERDEEN 0107D

tattoo: 0107D birth: 02/11/16 reg #: 18564535

ANGUS BULL

TC Aberdeen 759#
TR Mr Aberdeen 1068Y
 TR Ms Erica 8035U

C R A Bextor 872 5205 608#
 TC Blackbird 4034#

S S Objective T510 0T26#
 TR Ms Erica 5052R

S A V Net Worth 4200#

S A V 8180 Traveler 004#
 S A V May 2410

S R S Evergreen 0107X

Ox Bow Eisa Evergreen 226#

N Bar Emulation EXT#
 Ox Bow Eisa Evergreen 009

| | |
|-----|--------|
| \$W | 52.81 |
| \$F | 56.61 |
| \$G | 34.02 |
| \$B | 125.67 |

| Birth Weight | 205 Weight | Wean Ratio | Sire Avg Birth Wt | Dam Avg Birth Wt | Dam Wean Production |
|--------------|------------|------------|-------------------|------------------|---------------------|
| 97 | 764 | 106 | 12@83 | 5@91 | 5@106 |

| Angus Association EPDs | | | | | | | |
|------------------------|------|-----|-----|------|------|-----|-------|
| CED | BW | WW | YW | Milk | Marb | RE | Fat |
| +5 | +1.5 | +54 | +96 | +28 | +43 | +78 | -.003 |

- A performance oriented bull backed by a powerful cow



Truth and Honesty to Bet On

The Jacobs Ranch is just south of Stockett, Montana. My mom and dad, Helene and Bill, started it; growing up I helped them until 1986 when I took it over. My wife Kandy and I raised 4 kids here on the ranch.

I've known Ron for over 20 years and he is as honest as the day is long. His family is following in his footsteps. If they tell you something about a bull you can bet it is the truth.

This is our 10th year of buying bulls from the Skinner family. We started out buying 1 bull a year for 2 or 3 years. This year we are buying all our bulls there and plan on doing so for many years to come. We've bought 17 bulls from SRS and I've never had any regrets on them. Feet, disposition, fertility have all been outstanding. I only had to get rid of one bull early because he broke his leg.

I talk to Kim and Tim about the type of bull I'm looking for and they point me in the right direction. They really know what they're talking about. I've learned a lot from Ron and his sons.

This fall our steers weighed 735 lbs and the heifers weighed 690 lbs.

Dean Jacobs • Stockett, MT

58

SRS ABERDEEN 4260D

tattoo: 4260D birth: 01/21/16 reg #: 18564397

ANGUS BULL

TC Aberdeen 759#
TR Mr Aberdeen 1068Y
 TR Ms Erica 8035U

C R A Bextor 872 5205 608#
 TC Blackbird 4034#

S S Objective T510 0T26#
 TR Ms Erica 5052R

SRS Gunslinger 605Z

Tombstone 050
 Basin Joyce S474#

SRS Rose 4260B

S R S Rose 6147S

S A V 004 Density 4336#
 Vermilion Rose 7566#

| | |
|-----|--------|
| \$W | 50.16 |
| \$F | 47.18 |
| \$G | 28.18 |
| \$B | 115.94 |

| Birth Weight | 205 Weight | Wean Ratio | Sire Avg Birth Wt | Dam Avg Birth Wt | Dam Wean Production |
|--------------|------------|------------|-------------------|------------------|---------------------|
| 73 | 704 | 97 | 12@83 | 1@73 | 1@97 |

| Angus Association EPDs | | | | | | | |
|------------------------|------|-----|-----|------|------|-----|------|
| CED | BW | WW | YW | Milk | Marb | RE | Fat |
| +10 | +0.4 | +53 | +92 | +25 | +34 | +73 | +012 |

- Heifer Bull Potential





REFERENCE
SIRE

Stevenson Rockmount RX933



REFERENCE
DAM

Basin Blackbird R262, Pathfinder Dam of Lots 59-63

**LOTS 59-63
FLUSH BROTHERS**

- A set of eye appealing Rockmount sons out of a high performance Yellowstone daughter

62 SRS ROCKMOUNT 3122D
tattoo: 3122D birth: 02/14/16 reg #: 18565264 ET
ANGUS BULL

Sire: Stevenson Rockmount RX933 Dam: Basin Blackbird R262#

| Birth Weight | 205 Weight | Wean Ratio | \$W | \$F | \$G | \$B |
|--------------|------------|------------|-------|-------|-------|--------|
| ET | 656 | ET | 54.18 | 39.70 | 39.89 | 114.58 |

| Angus Association EPDs | | | | | | | |
|------------------------|------|-----|-----|------|------|-----|-------|
| CED | BW | WW | YW | Milk | Marb | RE | Fat |
| +5 | +2.5 | +53 | +85 | +24 | +66 | +64 | +0.18 |



63 SRS ROCKMOUNT 3139D
tattoo: 3139D birth: 02/14/16 reg #: 18565265 ET
ANGUS BULL

Sire: Stevenson Rockmount RX933 Dam: Basin Blackbird R262#

| Birth Weight | 205 Weight | Wean Ratio | \$W | \$F | \$G | \$B |
|--------------|------------|------------|-------|-------|-------|--------|
| ET | 636 | ET | 50.02 | 40.79 | 38.31 | 107.54 |

| Angus Association EPDs | | | | | | | |
|------------------------|------|-----|-----|------|------|-----|-------|
| CED | BW | WW | YW | Milk | Marb | RE | Fat |
| +10 | +0.8 | +50 | +83 | +22 | +8 | +55 | +0.61 |

- Heifer Bull Potential



59 SRS ROCKMOUNT 0446D
tattoo: 0446D birth: 02/09/16 reg #: 18565261 ET
ANGUS BULL

MCC Daybreak#
Stevenson Rockmount RX933
FSHK Pride 180#

Boyd New Day 8005#
MCC Miss Focus 134#
Sitz Alliance 6595#
FSHK Pride 725

Vermilion Yellowstone#
Basin Blackbird R262#
Basin Blackbird 628H

Vermilion Dateline 7078#
Vermilion B Jestress 3912
Basin Ambush 3905#
Basin Blackbird 4296

| \$W |
|--------|
| 46.37 |
| \$F |
| 30.82 |
| \$G |
| 52.82 |
| \$B |
| 132.32 |

| Birth Weight | 205 Weight | Wean Ratio | Sire Avg Birth Wt | Dam Avg Birth Wt | Dam Wean Production |
|--------------|------------|------------|-------------------|------------------|---------------------|
| ET | 694 | ET | 18@83 | 8@88 | 8@107 |

| Angus Association EPDs | | | | | | | |
|------------------------|----|-----|-----|------|-------|------|-------|
| CED | BW | WW | YW | Milk | Marb | RE | Fat |
| +5 | +2 | +51 | +78 | +20 | +1.05 | +7.0 | -0.13 |



60 SRS ROCKMOUNT 247D
tattoo: 247D birth: 03/02/16 reg #: 18611784 ET
ANGUS BULL

Sire: Stevenson Rockmount RX933 Dam: Basin Blackbird R262#

| Birth Weight | 205 Weight | Wean Ratio | \$W | \$F | \$G | \$B |
|--------------|------------|------------|-------|-------|-------|--------|
| ET | 739 | ET | 52.68 | 44.78 | 37.12 | 109.26 |

| Angus Association EPDs | | | | | | | |
|------------------------|------|-----|-----|------|------|------|-------|
| CED | BW | WW | YW | Milk | Marb | RE | Fat |
| +9 | +1.1 | +54 | +89 | +22 | +5.8 | +6.4 | +0.21 |

- Heifer Bull Potential



MATERNAL
BROTHER

SRS Ringo 748Z, Maternal Brother to Lots 59-63

61 SRS ROCKMOUNT 0803D
tattoo: 0803D birth: 02/09/16 reg #: 18565263 ET
ANGUS BULL

Sire: Stevenson Rockmount RX933 Dam: Basin Blackbird R262#

| Birth Weight | 205 Weight | Wean Ratio | \$W | \$F | \$G | \$B |
|--------------|------------|------------|-------|-------|-------|--------|
| ET | 675 | ET | 58.23 | 41.33 | 35.12 | 108.99 |

| Angus Association EPDs | | | | | | | |
|------------------------|------|-----|-----|------|------|------|-------|
| CED | BW | WW | YW | Milk | Marb | RE | Fat |
| +7 | +1.1 | +52 | +85 | +24 | +6.4 | +4.3 | +0.33 |

- Heifer Bull Potential



MATERNAL
BROTHER

SRS Gunslinger 879C, Maternal Brother to Lots 59-63



REFERENCE
SIRE

SRS Banner 0749B



REFERENCE
SIRE

SRS Anchor 0446A

64

SRS BANNER 534D

tattoo: 534D birth: 02/01/16 reg #: 18547441

ANGUS BULL

| | | |
|---------------------------|---------------------------|---------------|
| Tombstone 050 | Sitz Upward 307R# | \$W |
| SRS Banner 0749B | Mytty Countess 906 | 55.87 |
| Vermilion Pride 8071 | Leachman Right Time# | \$F |
| | Vermilion Pride 6446# | 34.60 |
| | | \$G |
| Vermilion Payweight J847# | Vermilion Dateline 7078# | 25.09 |
| Basin Erica 343R# | Vermilion Lass 7969 | \$B |
| Basin Erica 163N | Bon View New Design 1407# | 120.26 |
| | Basin Erica 9L11 | |

| Birth Weight | 205 Weight | Wean Ratio | Sire Avg Birth Wt | Dam Avg Birth Wt | Dam Wean Production |
|--------------|------------|------------|-------------------|------------------|---------------------|
| 85 | 702 | 97 | 21@82 | 10@85 | 10@103 |

| Angus Association EPDs | | | | | | | |
|------------------------|------|-----|-----|------|------|------|------|
| CED | BW | WW | YW | Milk | Marb | RE | Fat |
| +10 | -1.1 | +48 | +84 | +26 | +53 | +4.3 | +055 |

- Banner was a top selling bull in our 2015 sale due to his great phenotype
- Heifer Bull Potential



65

SRS ANCHOR 4218D

tattoo: 4218D birth: 02/21/16 reg #: 18547414

ANGUS BULL

| | | |
|--------------------------|-----------------------------|--------------|
| Tombstone 050 | Sitz Upward 307R# | \$W |
| SRS Anchor 0446A | Mytty Countess 906 | 60.68 |
| Ox Bow Blanche 2105 | Baldrige Jethro 75J# | \$F |
| | Ox Bow Blanche 801 | 44.02 |
| | | \$G |
| Musgrave Foundation | Kesslers Frontman R001# | 20.20 |
| SRS Blanche 4218B | MCATL Blackcap Juara 29-434 | \$B |
| Ox Bow Blanche 2105 | Baldrige Jethro 75J# | 53.51 |
| | Ox Bow Blanche 801 | |

| Birth Weight | 205 Weight | Wean Ratio | Sire Avg Birth Wt | Dam Avg Birth Wt | Dam Wean Production |
|--------------|------------|------------|-------------------|------------------|---------------------|
| 75 | 689 | 95 | 31@81 | 1@75 | 1@95 |

| Angus Association EPDs | | | | | | | |
|------------------------|------|-----|-----|------|------|------|------|
| CED | BW | WW | YW | Milk | Marb | RE | Fat |
| +13 | -1.6 | +50 | +90 | +30 | +3.3 | -.12 | +024 |

- Anchor is a bull that we used in our program because of his light BW, thickness and backed by a solid cow
- This son is a long, thick bull out of a nice first calf heifer
- Heifer Bull Potential



66

SRS ANCHOR 4235D

tattoo: 4235D birth: 02/27/16 reg #: 18547412

ANGUS BULL

| | | |
|-------------------------|---------------------------|--------------|
| Tombstone 050 | Sitz Upward 307R# | \$W |
| SRS Anchor 0446A | Mytty Countess 906 | 58.54 |
| Ox Bow Blanche 2105 | Baldrige Jethro 75J# | \$F |
| | Ox Bow Blanche 801 | 32.43 |
| | | \$G |
| Mytty Final Answer 85X | S A V Final Answer 0035# | 24.19 |
| SRS Rose 4235B | Mytty Eisa Evergreen 58R# | \$B |
| S R S Rose 1244Y# | S A V Untouchable 8665 | 75.67 |
| | S R S Rose 7185T | |

| Birth Weight | 205 Weight | Wean Ratio | Sire Avg Birth Wt | Dam Avg Birth Wt | Dam Wean Production |
|--------------|------------|------------|-------------------|------------------|---------------------|
| 76 | 723 | 100 | 31@81 | 1@76 | 1@100 |

| Angus Association EPDs | | | | | | | |
|------------------------|------|-----|-----|------|------|------|------|
| CED | BW | WW | YW | Milk | Marb | RE | Fat |
| +9 | +0.6 | +50 | +85 | +29 | +5.3 | +0.7 | +057 |

- Heifer Bull Potential



67

SRS ANCHOR 4217D

tattoo: 4217D birth: 02/29/16 reg #: 18547413

ANGUS BULL

| | | |
|--------------------------|-----------------------------|--------------|
| Tombstone 050 | Sitz Upward 307R# | \$W |
| SRS Anchor 0446A | Mytty Countess 906 | 57.11 |
| Ox Bow Blanche 2105 | Baldrige Jethro 75J# | \$F |
| | Ox Bow Blanche 801 | 38.9 |
| | | \$G |
| Musgrave Foundation | Kesslers Frontman R001# | 12.40 |
| SRS Blanche 4217B | MCATL Blackcap Juara 29-434 | \$B |
| Ox Bow Blanche 2105 | Baldrige Jethro 75J# | 43.93 |
| | Ox Bow Blanche 801 | |

| Birth Weight | 205 Weight | Wean Ratio | Sire Avg Birth Wt | Dam Avg Birth Wt | Dam Wean Production |
|--------------|------------|------------|-------------------|------------------|---------------------|
| 75 | 729 | 101 | 31@81 | 1@75 | 1@101 |

| Angus Association EPDs | | | | | | | |
|------------------------|------|-----|-----|------|------|------|------|
| CED | BW | WW | YW | Milk | Marb | RE | Fat |
| +12 | -1.3 | +49 | +83 | +29 | +1.2 | -.15 | +009 |

- Heifer Bull Potential



REFERENCE
DAM

Basin Erica 343R, Pathfinder Dam of Lot 64



68**SRS ANCHOR 4229D**

tattoo: 4229D birth: 03/08/16 reg #: 18547411

ANGUS BULLTombstone 050
SRS Anchor 0446A
Ox Bow Blanche 2105Sitz Upward 307R#
Mytty Countess 906
Baldrige Jethro 75J#
Ox Bow Blanche 801SRS Zen 0382Z
SRS Elba 4229B
S R S Elba 0133XSitz Uncommon
S R S Elba 0382N
S A V Final Answer 0035#
S R S Elba 8151U#\$W
44.45
\$F
38.30
\$G
23.21
\$B
83.29

| Birth Weight | 205 Weight | Wean Ratio | Sire Avg Birth Wt | Dam Avg Birth Wt | Dam Wean Production |
|--------------|------------|------------|-------------------|------------------|---------------------|
| 93 | 722 | 100 | 31@81 | 1@93 | 1@100 |

| Angus Association EPDs | | | | | | | |
|------------------------|------|-----|-----|------|------|------|-------|
| CED | BW | WW | YW | Milk | Marb | RE | Fat |
| +3 | +2.7 | +52 | +88 | +24 | +42 | +1.7 | +0.41 |

- A little younger calf out of a first calf heifer

REFERENCE
SIRE

HF Bank Roll 84B

69**SRS BANKROLL 2201D**

tattoo: 2201D birth: 03/09/16 twin reg #: 18529131

ANGUS BULLHF Smokin' Aces 105Y
HF Bank Roll 84B
HF Miss Lucy 268ZGreens Premium 7578
HR Erica 26T
Southland Exclusive 62U
HF Miss Lucy 202WTombstone 050
SRS Blackbird 2201Z
Basin Blackbird R262#Sitz Upward 307R#
Mytty Countess 906
Vermilion Yellowstone#
Basin Blackbird 628H\$W
48.00
\$F
32.73
\$G
25.57
\$B
89.99

| Birth Weight | 205 Weight | Wean Ratio | Sire Avg Birth Wt | Dam Avg Birth Wt | Dam Wean Production |
|--------------|------------|------------|-------------------|------------------|---------------------|
| 79 | 722 | 109 | 35@82 | 3@78 | 2@106 |

| Angus Association EPDs | | | | | | | |
|------------------------|------|-----|-----|------|------|------|--------|
| CED | BW | WW | YW | Milk | Marb | RE | Fat |
| +8 | +0.6 | +48 | +84 | +22 | +3.4 | +2.4 | -0.003 |

- A younger bull that is extremely thick
- Heifer Bull Potential

**70****SRS BANKROLL 3216D**

tattoo: 3216D birth: 02/05/16 reg #: 18547454

ANGUS BULLHF Smokin' Aces 105Y
HF Bank Roll 84B
HF Miss Lucy 268ZGreens Premium 7578
HR Erica 26T
Southland Exclusive 62U
HF Miss Lucy 202WSydGen C C & 7#
SRS Kathy 3216A
S R S Kathy 0394N#S A F Connection#
SydGen Forever Lady 4087
B C C Bushwacker 41-93#
Tar Kathy 8003\$W
38.65
\$F
43.67
\$G
25.43
\$B
112.52

| Birth Weight | 205 Weight | Wean Ratio | Sire Avg Birth Wt | Dam Avg Birth Wt | Dam Wean Production |
|--------------|------------|------------|-------------------|------------------|---------------------|
| 83 | 681 | 94 | 35@82 | 2@83 | 2@99 |

| Angus Association EPDs | | | | | | | |
|------------------------|------|-----|-----|------|------|------|--------|
| CED | BW | WW | YW | Milk | Marb | RE | Fat |
| +11 | +0.5 | +41 | +81 | +25 | +3.5 | +3.3 | +0.003 |

- A bull that will certainly catch your eye
- Heifer Bull Potential

**71****SRS BANKROLL 4253D**

tattoo: 4253D birth: 02/10/16 reg #: 18547458

ANGUS BULLHF Smokin' Aces 105Y
HF Bank Roll 84B
HF Miss Lucy 268ZGreens Premium 7578
HR Erica 26T
Southland Exclusive 62U
HF Miss Lucy 202WSRS Gunslinger 605Z
SRS Lady 4253B
SRS Lady 2271ZTombstone 050
Basin Joyce S474#
Mytty Thunderstruck
S R S Lady 8154U\$W
42.65
\$F
35.39
\$G
8.94
\$B
88.50

| Birth Weight | 205 Weight | Wean Ratio | Sire Avg Birth Wt | Dam Avg Birth Wt | Dam Wean Production |
|--------------|------------|------------|-------------------|------------------|---------------------|
| 66 | 694 | 96 | 35@82 | 1@66 | 1@96 |

| Angus Association EPDs | | | | | | | |
|------------------------|------|-----|-----|------|------|------|-------|
| CED | BW | WW | YW | Milk | Marb | RE | Fat |
| +12 | -1.2 | +49 | +86 | +20 | +0.9 | +2.8 | +0.27 |

- Heifer Bull Potential

**72****SRS BANKROLL 4266D**

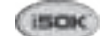
tattoo: 4266D birth: 02/27/16 reg #: 18547457

ANGUS BULLHF Smokin' Aces 105Y
HF Bank Roll 84B
HF Miss Lucy 268ZGreens Premium 7578
HR Erica 26T
Southland Exclusive 62U
HF Miss Lucy 202WMytty Final Answer 85X
SRS Pride 4266B
S R S Pride 7169TS A V Final Answer 0035#
Mytty Eisa Evergreen 58R#
Connealy Onward#
Vermilion Pride 8071\$W
32.05
\$F
20.04
\$G
18.10
\$B
71.86

| Birth Weight | 205 Weight | Wean Ratio | Sire Avg Birth Wt | Dam Avg Birth Wt | Dam Wean Production |
|--------------|------------|------------|-------------------|------------------|---------------------|
| 60 | 697 | 96 | 35@82 | 1@60 | 1@96 |

| Angus Association EPDs | | | | | | | |
|------------------------|------|-----|-----|------|------|------|-------|
| CED | BW | WW | YW | Milk | Marb | RE | Fat |
| +13 | -0.8 | +39 | +74 | +24 | +2.7 | +0.9 | +0.24 |

- Heifer Bull Potential

**73****SRS BANKROLL 4206D**

tattoo: 4206D birth: 03/06/16 reg #: 18547460

ANGUS BULLHF Smokin' Aces 105Y
HF Bank Roll 84B
HF Miss Lucy 268ZGreens Premium 7578
HR Erica 26T
Southland Exclusive 62U
HF Miss Lucy 202WTombstone 050
SRS Pride 4206B
Vermilion Pride 8071Sitz Upward 307R#
Mytty Countess 906
Leachman Right Time#
Vermilion Pride 6446#\$W
49.22
\$F
33.68
\$G
8.9
\$B
61.11

| Birth Weight | 205 Weight | Wean Ratio | Sire Avg Birth Wt | Dam Avg Birth Wt | Dam Wean Production |
|--------------|------------|------------|-------------------|------------------|---------------------|
| 92 | 774 | 107 | 35@82 | 1@92 | 1@107 |

| Angus Association EPDs | | | | | | | |
|------------------------|------|-----|-----|------|------|------|-------|
| CED | BW | WW | YW | Milk | Marb | RE | Fat |
| +4 | +2.2 | +50 | +84 | +22 | +1 | +0.6 | +0.32 |



SRS BREED BULLS





**ANGUS
OPTIMIZERS
SALERS**

SRS BREED BULLS



74 **SRS ARIAT 4186D**
 tattoo: SRS4186D birth: 1/31/16 reg #: P710140
OPTIMIZER BULL
 TOMBSTONE 050 SITZ UPWARD 307R
SRS ARIAT 270A MYTTY COUNTESS 906
 SRS FOOTLOOSE 9927J SRS FOCUS 9403F
 SRS FOOTLOOSE 9644F
 SRS ZEUS 0509Z SITZ UNCOMMON
SRS MADISON 4186B PRK MISS MONTANA 503R
 SRS MADISON 9113W SRS RECRUIT 0122R
 SRS MADISON 0261M

| Birth Weight | 205 Weight | Wean Ratio | American Salers EPDs | | | | |
|-------------------|------------------|---------------------|--------------------------|------------|-------------|------------|------------|
| | | | BW | WW | YW | MWW | Milk |
| 84 | 773 | 111 | +1.1 | +57 | +101 | +53 | +25 |
| Sire Avg Birth Wt | Dam Avg Birth Wt | Dam Wean Production | HOMOZYGOUS POLLED | | | | |
| 19@87 | 1@84 | 1@111 | 50.80% | | | | |
| | | | HOMOZYGOUS BLACK | | | | |

- A Homozygous Polled and Homozygous Black Optimizer bull
- This bull is an impressive powerhouse of a bull that has been a standout since birth
- His moderate Zeus dam is out of a powerful cow family and she has a good udder
- Heifer Bull Potential



SRS Ariat 270A

Balanced Traits

In 1988, Cathy Campbell bought the historic Hilger Hereford Ranch, which was established in 1889 at the Gates of the Mountains north of Helena, Montana. Today the ranch still operates as a cow/calf operation in a very trying environment, the ranch is all mountain terrain that receives an average annual rainfall amount of less than 10 inches.

We started buying optimizer bulls from the Skinners 11 years ago, looking to improve the carcass traits in our cattle. We keep going back year after year because of the well balanced traits of these cattle. The bulls are grown right with great feet and have the longevity to hold up in our challenging environment.

The attention the Skinners put into their females show when calving our ranch raised replacements. Our females out of Skinner genetics consistently have great dispositions with excellent mothering ability and udder quality. This all adds up to trouble free cattle. We will be back at the Skinner sale in 2017 to get trouble free cattle that perform.

Ross Morgan, Ranch Foreman • Gates of the Mountains, MT
 Hilger Ranch, owned by Catherine Campbell





75 **SRS GREELEY 270D**
 tattoo: SRS270D birth: 3/6/16 reg #: TP710727 ET
OPTIMIZER BULL
 CONNEALY CONFIDENCE 0100 CONNEALY TOBIN
 CONNEALY GREELEY BECKA GALA OF CONANGA 8281
 PRECIOUS OF CONANGA 0484 CONNEALY 044 062
 NJF FEIST'S GALAXY 06N
 RAO 16L
 CRO SURVEY 615S
SRS FINICKY 0838U
 SRS FINICKY 9809H SRS FOCUS 9403F
 SRS FINICKY 9646F



Connealy Greeley

| Birth Weight | 205 Weight | Wean Ratio | American Salers EPDs | | | | |
|-------------------|------------------|---------------------|--|-----|-----|-----|------|
| | | | BW | WW | YW | MWW | Milk |
| ET | 712 | ET | +1.3 | +47 | +92 | +45 | +22 |
| Sire Avg Birth Wt | Dam Avg Birth Wt | Dam Wean Production | POLLED 50% HOMOZYGOUS BLACK | | | | |
| 21@89 | 7@90 | 7@108 | | | | | |

- This smooth polled bull is powerfully constructed from all angles
- A bull with tremendous length, depth, and thickness
- The dam is a beautiful purebred donor cow that is extremely long, thick, and correct
- She has an excellent udder and impeccable feet with outstanding performance
- Full brother to Lots 79 & 80, Maternal brother to SRS Bond

Athletic, Sound Bulls

We have been using SRS bulls for 14 years. We run on the steep breaks of the Clearwater River. SRS bulls have worked great for us; they are sound and extremely athletic, have no trouble traveling the hillsides, and hold their flesh very well. I have also liked SRS bulls because I know what I am getting and have a good idea how their offspring will develop and perform. The countless hours Skinners have spent looking for their herd sires and the criteria they require for a cow to be in their herd takes a lot of the guesswork out of bull buying.

Chad Pratt • Pratt Ranch • Kooskia, ID





76 **SRS BORDERLINE 0996D**
 tattoo: SRS0996D birth: 2/5/16 reg #: P710152
OPTIMIZER BULL
 C-BAR EVOLUTION 107Y TR COLT 45 UT806
 DJF BORDER LINE 815A LGS ABBY 689S
 STCY UNITY 815U S NEBRASKA 330N
 STCY NATALIE 315N
 SRS TROY 0561T SRS MARKSMAN 0059M
SRS KRISTY 0996W SRS REQUEST 0561R
 SRS KRISTY 0766T S A V 004 DENSITY 4336
 SRS KRISTY 0037K

| Birth Weight | 205 Weight | Wean Ratio | American Salers EPDs | | | | |
|--------------|------------|------------|----------------------|-----|-----|-----|------|
| | | | BW | WW | YW | MWW | Milk |
| 84 | 734 | 106 | +0.8 | +52 | +93 | +49 | +23 |

| Sire Avg Birth Wt | Dam Avg Birth Wt | Dam Wean Production | POLLED | BLACK |
|-------------------|------------------|---------------------|--------|-------|
| 11@82 | 6@89 | 6@108 | 48.70% | |



DJF Border Line 815A

- Another impressive optimizer bull that puts it all together
- You will like this bull for his thickness, length, and style
- His dam is a moderate cow that is broody and does it every time
- Maternal Brother to SRS Yatzhee

The Best Kept Secret

I'm a third generation farmer/rancher from central Montana. My ancestors came from Iowa in the 30s. I mostly farm, but also run about 200 cows. Since most of my efforts are directed to the farming, early on I looked for help to improve my cow herd and found it in Ron Skinner.

I purchased bulls in his first sale in 1987 and nearly every one since. It's been the best kept secret in the bull business. His knowledge, expertise, and veterinary skills have taken the guess work out of it for me. Not only his emphasis on bulls that work but his quest to build the perfect cow has formed a great balance. The traits we all look for: weaning weight, calving ease, disposition, maternal ability, and bull soundness have always been there. I've always been impressed with their length and thickness.

I've also purchased numerous females from Ron, and their fertility and longevity has been a great asset to my herd. I calve Feb 1st and ship Oct 5th and the weaning weights are consistently 700-750 lbs. That's with no special care and running a high percentage of older cows.

Ron has been very involved in the industry and this bodes well for us all. Now, his sons are continuing the tradition. It's been a great pleasure in my life to know Ron, Bev, and their family. I would recommend SRS to anyone.

Paul Tyler • Moore, MT





LOT
77

77

SRS BANNER 150C

OPTIMIZER BULL tattoo: SRS150D birth: 2/28/16 reg #: TS710716 ET
 TOMBSTONE 050 SITZ UPWARD 307R
SRS BANNER 0749B MYTTY COUNTESS 906
 VERMILION PRIDE 8071 LEACHMAN RIGHT TIME
 VERMILION PRIDE 6446
 CRO SURVEY 615S NJF FEIST'S GALAXY 06N
SRS JULIET 0829U RAO 16L
 SRS JULIET 0522R SRS CHEYENNE 9529M
 SRS JULIET 9026Z

| Birth Weight | 205 Weight | Wean Ratio | American Salers EPDs | | | | |
|-------------------|------------------|---------------------|---|-----|------|-----|------|
| | | | BW | WW | YW | MWW | Milk |
| ET | 703 | ET | +1.1 | +57 | +103 | +51 | +22 |
| Sire Avg Birth Wt | Dam Avg Birth Wt | Dam Wean Production | SCURRED 50% HOMOZYGOUS BLACK | | | | |
| 21@82 | 7@85 | 7@110 | | | | | |

- The first in a powerful group of flush brothers
- This bull is moderate, long, and thick
- The dam is a well-designed Survey daughter that has explosive performance and excellent numbers
- This excellent-uddered, phenomenal footed donor produces calves at the top every year
- Full brother to Lot 81-84 and Maternal Brother to SRS Big League



SRS Banner 0749B

78

SRS BULLSEYE 3160D

OPTIMIZER BULL tattoo: SRS3160D birth: 2/11/16 reg #: P710234
 SOO LINE MOTIVE 9016 HF KODIAK 5R
SRS BULLSEYE 592B TLA BEAUTY 5R
 SRS JULIET 0584R MAC LANSING 302L
 SRS JULIET 9609F
 SRS UPRISING 0059U SRS SAINT 0218S
SRS SUZETTE 3160A SRS KYLA 0059K
 SRS SUZETTE 0675S S A V 8180 TRAVELER 004
 SRS CHARISMA 9331C

| Birth Weight | 205 Weight | Wean Ratio | American Salers EPDs | | | | |
|-------------------|------------------|---------------------|--------------------------------|-----|------|-----|------|
| | | | BW | WW | YW | MWW | Milk |
| 96 | 743 | 107 | +2.4 | +61 | +112 | +53 | +22 |
| Sire Avg Birth Wt | Dam Avg Birth Wt | Dam Wean Production | POLLED 49.60% BLACK | | | | |
| 13@89 | 2@91 | 2@106 | | | | | |

- Another bull that is sure to impress, long, thick, and good
- A high performing bull that is hard to fault
- The dam is a beautifully made four year old cow
- She has an excellent udder



SRS Bullseye 592B

Salers Average EPDs BW +2 WW +32.7 YW +63.3 MWW +34.7 Milk +18.3 note - EPDs cannot be compared across breeds

Optimizer Bulls



LOTS 79-80 FLUSH BROTHERS

- Connealy Greeley is a sire we used due to his impressive sons and his dam who was long-made, good-footed, with a great udder
- His calves here, both Angus and Optimizer, are long, thick, and stylish
- Two more high performance bulls that are full brothers to Lot 75
- The dam is a beautiful purebred donor cow that is extremely long, thick, and correct
- She has an excellent udder and impeccable feet with outstanding performance



Connealy Greeley

79 **SRS GREELEY 673D**
 tattoo: SRS673D birth: 3/1/16 reg #: TP710729 ET
OPTIMIZER BULL
 CONNEALY CONFIDENCE 0100 CONNEALY TOBIN
 CONNEALY GREELEY BECKA GALA OF CONANGA 8281
 PRECIOUS OF CONANGA 0484 CONNEALY 044 062
 CRO SURVEY 615S NJF FEIST'S GALAXY 06N
SRS FINICKY 0838U RAO 16L
 SRS FINICKY 9809H SRS FOCUS 9403F
 SRS FINICKY 9646F

| Birth Weight | 205 Weight | Wean Ratio | American Salers EPDs | | | | |
|-------------------|------------------|---------------------|-------------------------|-----|-----|-----|------|
| | | | BW | WW | YW | MWW | Milk |
| ET | 737 | ET | +1.3 | +47 | +92 | +45 | +22 |
| Sire Avg Birth Wt | Dam Avg Birth Wt | Dam Wean Production | SCURRED 50% | | | | |
| 21@89 | 7@90 | 7@108 | HOMOZYGOUS BLACK | | | | |

80 **SRS GREELEY 146D**
 tattoo: SRS146D birth: 3/6/16 reg #: TP710726 ET
OPTIMIZER BULL
 Sire: **CONNEALY GREELEY** Dam: **SRS FINICKY 0838U**

| Birth Weight | 205 Weight | Wean Ratio | American Salers EPDs | | | | |
|-------------------|------------------|---------------------|-------------------------|-----|-----|-----|------|
| | | | BW | WW | YW | MWW | Milk |
| ET | 792 | ET | +1.3 | +47 | +92 | +45 | +22 |
| Sire Avg Birth Wt | Dam Avg Birth Wt | Dam Wean Production | POLLED 50% | | | | |
| 21@89 | 7@90 | 7@108 | HOMOZYGOUS BLACK | | | | |

*Balancing traits for over three decades emphasizing
real-world cattle with these essential traits:
good feet & legs, udder quality, tight sheath and good disposition*





81 **SRS ARIAT 4130D**
 tattoo: SRS4130D birth: 1/29/16 reg #: P710144
OPTIMIZER BULL
 TOMBSTONE 050 SITZ UPWARD 307R
SRS ARIAT 270A MYTTY COUNTESS 906
 SRS FOOTLOOSE 9927J SRS FOCUS 9403F
 SRS FOOTLOOSE 9644F
 SRS ZEUS 0509Z SITZ UNCOMMON
SRS BLUE MOON 4130B PRK MISS MONTANA 503R
 SRS BLUE MOON 1026X SRS UPDATE 0157U
 SRS BLUE MOON 0223M

| Birth Weight | 205 Weight | Wean Ratio | American Salers EPDs | | | | |
|-------------------|------------------|---------------------|--------------------------|------------|-------------|------------|------------|
| | | | BW | WW | YW | MWW | Milk |
| 84 | 771 | 111 | +0.4 | +60 | +104 | +51 | +21 |
| Sire Avg Birth Wt | Dam Avg Birth Wt | Dam Wean Production | HOMOZYGOUS POLLED | | | | |
| 19@87 | 1@84 | 1@111 | 50% | | | | |
| | | | RED | | | | |



SRS Ariat 270A

- SRS Ariat was a top bull that sold in 2013, he had exceptional phenotype with a light BW
- His calves have been absolute standouts every year
- The dam was a donor that exhibited extra length and excellent udder
- Lot 81 is a homozygous polled bull, extremely long-made, thick and correct
- You'll appreciate his dam for her femininity, length, and beautiful udder
- Heifer Bull Potential

Skinner Bulls Meet Our Needs Every Time

NLD Inc. is a family cow-calf, hay, grain, and horse operation. We are based out of Choteau, Montana and our operation runs in three north central counties: Teton, Pondera, and Choteau.

We have been using Skinner Optimizer and Salers bulls for over 15 years.

Our main objective in bull selection is maternal bulls with longevity, easy maintenance, and as much performance as we can get without sacrificing our primary goals. We select bulls that make great, fertile daughters with udder quality, milk, disposition, and doability to bring in a quality calf every year—NO exceptions.

Skinner bulls meet our needs every time.

Ron, Kim, and Tim are very easy to work with and are a great help with bull selection. In fact, in all the years we've used Skinner bulls, I've only been to two sales. Their judgment, knowledge of their cattle, and honesty make buying sight unseen an easy option.

As long as I'm in the business and Skinners are raising bulls, I plan to be a customer.

Nels DeBruycker • Choteau, MT



LOTS 82-83 FULL BROTHERS

- Two full brothers in blood
- Powerful bulls out of Ariat and full sisters to Bottomline and Bullseye
- These full sisters are moderate, beautifully made Motive daughters with impeccable udders who are doing a phenomenal job

82 **SRS ARIAT 4184D**
 tattoo: SRS4184D birth: 1/26/16 reg #: P710139
OPTIMIZER BULL
 TOMBSTONE 050
SRS ARIAT 270A
 SRS FOOTLOOSE 9927J

SITZ UPWARD 307R
 MYTTY COUNTESS 906
 SRS FOCUS 9403F
 SRS FOOTLOOSE 9644F
 HF KODIAK 5R
 TLA BEAUTY 5R
 MAC LANSING 302L
 SRS JULIET 9609F

SOO LINE MOTIVE 9016
SRS JULIET 4184B
 SRS JULIET 0584R

| Birth Weight | 205 Weight | Wean Ratio | American Salers EPDs | | | | | |
|-------------------|------------|------------|----------------------|-----|---------------------|-----|-------------------|--------------|
| | | | BW | WW | YW | MWW | Milk | |
| 95 | 767 | 111 | +2.6 | +59 | +104 | +51 | +21 | |
| Sire Avg Birth Wt | | | Dam Avg Birth Wt | | Dam Wean Production | | POLLED 50% | BLACK |
| 19@87 | | | 1@95 | | 1@111 | | | |

83 **SRS ARIAT 4182D**
 tattoo: SRS4182D birth: 1/29/16 reg #: P710142
OPTIMIZER BULL
 Sire: **SRS ARIAT 270A** Dam: **SRS JULIET 4184B**

| Birth Weight | 205 Weight | Wean Ratio | American Salers EPDs | | | | | |
|-------------------|------------|------------|----------------------|-----|---------------------|-----|-------------------|------------|
| | | | BW | WW | YW | MWW | Milk | |
| 102 | 778 | 112 | +3.6 | +62 | +109 | +52 | +21 | |
| Sire Avg Birth Wt | | | Dam Avg Birth Wt | | Dam Wean Production | | POLLED 50% | RED |
| 19@87 | | | 1@102 | | 1@112 | | | |



LOTS 84-86 FLUSH BROTHERS

- Banner was a top selling bull in our 2015 sale due to his great phenotype
- His dam was a great cow in our donor program
- Three more full brothers to Lot 77 that are sure to impress
- The dam is a well-designed Survey daughter that has explosive performance and excellent numbers
- This excellent-uddered, phenomenal footed donor produces calves at the top every year

84 **SRS BANNER 226D**
 tattoo: SRS226D birth: 2/29/16 reg #: TP710722 ET
OPTIMIZER BULL
 TOMBSTONE 050
SRS BANNER 0749B
 VERMILION PRIDE 8071

SITZ UPWARD 307R
 MYTTY COUNTESS 906
 LEACHMAN RIGHT TIME
 VERMILION PRIDE 6446
 NJF FEIST'S GALAXY 06N
 RAO 16L
 CRO SURVEY 615S
SRS JULIET 0829U
 SRS JULIET 0522R

SRS CHEYENNE 9529M
 SRS JULIET 9026Z

| Birth Weight | 205 Weight | Wean Ratio | American Salers EPDs | | | | | |
|-------------------|------------|------------|----------------------|-----|---------------------|-----|--------------------|-------------------------|
| | | | BW | WW | YW | MWW | Milk | |
| ET | 687 | ET | +1.1 | +57 | +103 | +51 | +22 | |
| Sire Avg Birth Wt | | | Dam Avg Birth Wt | | Dam Wean Production | | SCURRED 50% | HOMOZYGOUS BLACK |
| 21@82 | | | 7@85 | | 7@110 | | | |

85 **SRS BANNER 155D**
 tattoo: SRS155D birth: 3/3/16 reg #: TP710717 ET
OPTIMIZER BULL
 Sire: **SRS BANNER 0749B** Dam: **SRS JULIET 0829U**

| Birth Weight | 205 Weight | Wean Ratio | American Salers EPDs | | | | | |
|-------------------|------------|------------|----------------------|-----|---------------------|-----|--------------------|-------------------------|
| | | | BW | WW | YW | MWW | Milk | |
| ET | 712 | ET | +1.1 | +57 | +103 | +51 | +22 | |
| Sire Avg Birth Wt | | | Dam Avg Birth Wt | | Dam Wean Production | | SCURRED 50% | HOMOZYGOUS BLACK |
| 21@82 | | | 7@85 | | 7@110 | | | |

86 **SRS BANNER 661D**
 tattoo: SRS661D birth: 2/29/16 reg #: TS710719 ET
OPTIMIZER BULL
 Sire: **SRS BANNER 0749B** Dam: **SRS JULIET 0829U**

| Birth Weight | 205 Weight | Wean Ratio | American Salers EPDs | | | | | |
|-------------------|------------|------------|----------------------|-----|---------------------|-----|-------------------|-------------------------|
| | | | BW | WW | YW | MWW | Milk | |
| ET | 721 | ET | +1.1 | +57 | +103 | +51 | +22 | |
| Sire Avg Birth Wt | | | Dam Avg Birth Wt | | Dam Wean Production | | POLLED 50% | HOMOZYGOUS BLACK |
| 21@82 | | | 7@85 | | 7@110 | | | |



SRS Banner 0749B



Salers Average EPDs BW +2 WW +32.7 YW +63.3 MWW +34.7 Milk +18.3 note - EPDs cannot be compared across breeds



87 **SRS ZEUS 3100D**
 tattoo: SRS3100D birth: 3/7/16 reg #: P710121
OPTIMIZER BULL
 SITZ UNCOMMON SITZ UPWARD 307R
SRS ZEUS 0509Z SITZ ELLUNAS ELITE 1697
 PRK MISS MONTANA 503R SRS NOKIA 9722N
 PRK MISS MONTANA 313N
 SRS YUMA 072Y DJF WHISKEY RIVER 9006W
SRS COLUMBIA 3100A SRS RUSSETT 0305N
 SRS COLUMBIA 0530R MAC LANSING 302L
 SRS COLUMBIA 0324N

| Birth Weight | 205 Weight | Wean Ratio | American Salers EPDs | | | | | |
|-------------------|------------|------------------|----------------------|-----|-------------------------|-----|------|--|
| | | | BW | WW | YW | MWW | Milk | |
| 94 | 776 | 108 | +2.4 | +54 | +99 | +51 | +24 | |
| Sire Avg Birth Wt | | Dam Avg Birth Wt | Dam Wean Production | | POLLED 75% | | | |
| 125@86 | | 2@84 | 2@103 | | HOMOZYGOUS BLACK | | | |

- SRS Zeus is an extremely thick, long-sided, deep bull
- We have continued to use this sire for his ability to sire thick made calves with good performance
- His daughters are easy-keeping with good udders
- Lot 87 is a thick-made, high-performing bull out of a long-made, good uddered Yuma daughter

88 **SRS ZEUS 3113D**
 tattoo: SRS3113D birth: 2/21/16 reg #: P710129
OPTIMIZER BULL
 SITZ UNCOMMON SITZ UPWARD 307R
SRS ZEUS 0509Z SITZ ELLUNAS ELITE 1697
 PRK MISS MONTANA 503R SRS NOKIA 9722N
 PRK MISS MONTANA 313N
 SRS NEVADA 9378N SRS FOCUS 9403F
SRS PRICELESS 3113A RAIN LASS 207
 SRS PRICELESS 0881U SRS SAINT 0218S
 SRS PRICELESS 0447P

| Birth Weight | 205 Weight | Wean Ratio | American Salers EPDs | | | | | |
|-------------------|------------|------------------|----------------------|-----|----------------------|-----|------|--|
| | | | BW | WW | YW | MWW | Milk | |
| 85 | 745 | 107 | -0.3 | +48 | +91 | +48 | +24 | |
| Sire Avg Birth Wt | | Dam Avg Birth Wt | Dam Wean Production | | POLLED 50.10% | | | |
| 125@86 | | 2@83 | 2@106 | | BLACK | | | |

- Eye catching, thick and square bull out of a beautiful uddered cow
- Heifer Bull Potential



REFERENCE
SIRE

SRS Zeus 0509Z

89 **SRS ZEUS 0933D**
 tattoo: SRS0933D birth: 3/2/16 reg #: P710126
OPTIMIZER BULL
 SITZ UNCOMMON SITZ UPWARD 307R
SRS ZEUS 0509Z SITZ ELLUNAS ELITE 1697
 PRK MISS MONTANA 503R SRS NOKIA 9722N
 PRK MISS MONTANA 313N
 S R S STRATEGY 607S S A V 004 DENSITY 4336
SRS AURA 0933W VERMILION ROSE 7566
 SRS AURA 0122L SRS HAWKEYE 9026H
 SRS AURA 9121A

| Birth Weight | 205 Weight | Wean Ratio | American Salers EPDs | | | | | |
|-------------------|------------|------------------|----------------------|-----|-------------------|-----|------|--|
| | | | BW | WW | YW | MWW | Milk | |
| 97 | 715 | 103 | +2.4 | +50 | +92 | +45 | +20 | |
| Sire Avg Birth Wt | | Dam Avg Birth Wt | Dam Wean Production | | POLLED 50% | | | |
| 125@86 | | 6@88 | 6@102 | | RED | | | |

- A long-sided, deep-ribbed calf out of a nice cow

90 **SRS ZEUS 0938D**
 tattoo: SRS0938D birth: 3/1/16 reg #: P710111
OPTIMIZER BULL
 SITZ UNCOMMON SITZ UPWARD 307R
SRS ZEUS 0509Z SITZ ELLUNAS ELITE 1697
 PRK MISS MONTANA 503R SRS NOKIA 9722N
 PRK MISS MONTANA 313N
 SRS NEVADA 9378N SRS FOCUS 9403F
SRS MORGAN 0938W RAIN LASS 207
 SRS MORGAN 0244M SPRINGDALE INDEPENDANCE
 SRS CONVINC 9394C

| Birth Weight | 205 Weight | Wean Ratio | American Salers EPDs | | | | | |
|-------------------|------------|------------------|----------------------|-----|----------------------|-----|------|--|
| | | | BW | WW | YW | MWW | Milk | |
| 75 | 693 | 100 | -1.8 | +34 | +70 | +41 | +24 | |
| Sire Avg Birth Wt | | Dam Avg Birth Wt | Dam Wean Production | | POLLED 50.20% | | | |
| 125@86 | | 6@76 | 5@105 | | BLACK | | | |

- A stylish made calf out of a picture perfect cow
- Heifer Bull Potential

Reach Your Goal

Yoder Angus Ranch is a family owned cow-calf operation in Montana's Bitterroot valley. We want to thank the Skinner crew for their help with our Angus cattle. Our bulls and some cows come from SRS. Our bottom line is selling calves in the fall. Calves weighing 775 lbs on the heifers and 835 lbs on the steers is really exciting.

These bulls stay sound for a long time. Skinner Ranch cattle will help you reach your goal.

Yoder Angus • Stevensville, MT

91 **SRS BATTALION 3162D**
 tattoo: SRS3162D birth: 2/8/16 reg #: P710256
OPTIMIZER BULL
 SRS ZEUS 0509Z SITZ UNCOMMON
SRS BATTALION 0984B PRK MISS MONTANA 503R
 SRS SEIKO 0984W SRS RECRUIT 0122R
 SRS SEIKO 0670S
 SRS UPRISING 0059U SRS SAINT 0218S
SRS KRISTY 3162A SRS KYLA 0059K
 SRS KRISTY 0930W SRS NIKON 411N
 SRS KRISTY 0037K

| Birth Weight | 205 Weight | Wean Ratio | American Salers EPDs | | | | | |
|-------------------|------------|------------------|----------------------|-----|-------------------------|-----|------|--|
| | | | BW | WW | YW | MWW | Milk | |
| 82 | 710 | 102 | -0.4 | +53 | +99 | +47 | +21 | |
| Sire Avg Birth Wt | | Dam Avg Birth Wt | Dam Wean Production | | POLLED 48.10% | | | |
| 22@84 | | 2@91 | 2@105 | | HOMOZYGOUS BLACK | | | |

- Battalion was a high selling bull in our 2015 sale that was long sided and thick with a moderate birth weight
- His dam is a high performing good-uddered female that produces a top calf every year
- Lot 91 is a stylish thick made bull that is very square in his make-up
- Heifer Bull Potential

Salers Average EPDs BW +2 WW +32.7 YW +63.3 MWW +34.7 Milk +18.3 note - EPDs cannot be compared across breeds

92 **SRS BATTALION 4154D**
 tattoo: SRS4154D birth: 1/27/16 reg #: P710265
OPTIMIZER BULL
 SRS ZEUS 0509Z SITZ UNCOMMON
SRS BATTALION 0984B PRK MISS MONTANA 503R
 SRS SEIKO 0984W SRS RECRUIT 0122R
 SRS SEIKO 0670S
 PRK YELLOWSTONE 966Y SRS UPRISING 0059U
SRS MORGAN 4154B PRK RECIPE 966W
 SRS MORGAN 0938W SRS NEVADA 9378N
 SRS MORGAN 0244M

| Birth Weight | 205 Weight | Wean Ratio | American Salers EPDs | | | | |
|-------------------|------------|------------------|----------------------|-----|-------------------------|-----|------|
| | | | BW | WW | YW | MWW | Milk |
| 76 | 696 | 100 | -2.1 | +42 | +85 | +46 | +24 |
| Sire Avg Birth Wt | | Dam Avg Birth Wt | Dam Wean Production | | POLLED 50% | | |
| 22@84 | | 1@76 | 1@100 | | HOMOZYGOUS BLACK | | |

- A square made bull
- Heifer Bull Potential

94 **SRS BATTALION 4180D**
 tattoo: SRS4180D birth: 1/31/16 reg #: P710261
OPTIMIZER BULL
 SRS ZEUS 0509Z SITZ UNCOMMON
SRS BATTALION 0984B PRK MISS MONTANA 503R
 SRS SEIKO 0984W SRS RECRUIT 0122R
 SRS SEIKO 0670S
 SRS GUNSLINGER 605Z TOMBSTONE 050
SRS JULIET 4180B BASIN JOYCE S474
 SRS JULIET 0218M SRS FOCUS 9403F
 SRS JULIET 9505E

| Birth Weight | 205 Weight | Wean Ratio | American Salers EPDs | | | | |
|-------------------|------------|------------------|----------------------|-----|-------------------------|-----|------|
| | | | BW | WW | YW | MWW | Milk |
| 83 | 662 | 95 | -0.6 | +42 | +80 | +41 | +20 |
| Sire Avg Birth Wt | | Dam Avg Birth Wt | Dam Wean Production | | POLLED 50% | | |
| 22@84 | | 1@83 | 1@95 | | HOMOZYGOUS BLACK | | |

- A nice patterned, thick-made, moderate bull
- Heifer Bull Potential

93 **SRS BATTALION 3173D**
 tattoo: SRS3173D birth: 2/9/16 reg #: P710259
OPTIMIZER BULL
 SRS ZEUS 0509Z SITZ UNCOMMON
SRS BATTALION 0984B PRK MISS MONTANA 503R
 SRS SEIKO 0984W SRS RECRUIT 0122R
 SRS SEIKO 0670S
 SRS UPRISING 0059U SRS SAINT 0218S
SRS FOOTLOOSE 3173A SRS KYLA 0059K
 SRS FOOTLOOSE 1169 Y S A V UNTOUCHABLE 8665
 SRS FOOTLOOSE 0843U

| Birth Weight | 205 Weight | Wean Ratio | American Salers EPDs | | | | |
|-------------------|------------|------------------|----------------------|-----|-------------------------|-----|------|
| | | | BW | WW | YW | MWW | Milk |
| 76 | 685 | 99 | -2.1 | +44 | +85 | +43 | +21 |
| Sire Avg Birth Wt | | Dam Avg Birth Wt | Dam Wean Production | | POLLED 49.70% | | |
| 22@84 | | 2@79 | 2@101 | | HOMOZYGOUS BLACK | | |

- A bull that will catch your eye
- Heifer Bull Potential



REFERENCE SIRE

SRS Battalion 0984B



LOT 93

Optimizer Bulls



SRS Gold Label 3149C
Maternal Brother to Lot 98

95 **SRS BENCHMARK 1162D**
 tattoo: SRS1162D birth: 2/7/16 reg #: P710224
OPTIMIZER BULL
 SRS ZEUS 0509Z SITZ UNCOMMON
SRS BENCHMARK 8105B PRK MISS MONTANA 503R
 SRS SHANNON 8105U SRS SAINT 0218S
 SRS SHANNON 0660S
 SRS UPRISING 0059U SRS SAINT 0218S
SRS SEIKO 1162Y SRS KYLA 0059K
 SRS SEIKO 0670S SRS NEVADA 9378N
 SRS PRICELESS 0447P

| Birth Weight | 205 Weight | Wean Ratio | American Salers EPDs | | | | | |
|-------------------|------------|------------------|----------------------|-----|-------------------------|-----|------|--|
| | | | BW | WW | YW | MWW | Milk | |
| 89 | 738 | 106 | +1.2 | +59 | +107 | +50 | +21 | |
| Sire Avg Birth Wt | | Dam Avg Birth Wt | Dam Wean Production | | POLLED 49.70% | | | |
| 13@89 | | 4@86 | 4@99 | | HOMOZYGOUS BLACK | | | |

- Benchmark was the high selling bull in our 2015 sale
- He was a long-sided, thick-made bull with phenomenal performance
- His dam is a nice-uddered female with great length and phenotype
- This son is extremely long and thick and is out of a beautiful-uddered, moderate cow with exceptional thickness

96 **SRS BENCHMARK 2142D**
 tattoo: SRS2142D birth: 2/4/16 reg #: P710226
OPTIMIZER BULL
 SRS ZEUS 0509Z SITZ UNCOMMON
SRS BENCHMARK 8105B PRK MISS MONTANA 503R
 SRS SHANNON 8105U SRS SAINT 0218S
 SRS SHANNON 0660S
 SRS UPRISING 0059U SRS SAINT 0218S
SRS PONDERA 2142Z SRS KYLA 0059K
 SRS PONDERA 0472P SRS MARKSMAN 0059M
 SRS DAINTY 9478D

| Birth Weight | 205 Weight | Wean Ratio | American Salers EPDs | | | | | |
|-------------------|------------|------------------|----------------------|-----|----------------------|-----|------|--|
| | | | BW | WW | YW | MWW | Milk | |
| 89 | 732 | 105 | +0.9 | +57 | +106 | +49 | +21 | |
| Sire Avg Birth Wt | | Dam Avg Birth Wt | Dam Wean Production | | POLLED 49.10% | | | |
| 13@89 | | 3@86 | 3@101 | | BLACK | | | |

- A very impressive, thick, long-made bull

97 **SRS BENCHMARK 3166D**
 tattoo: SRS3166D birth: 2/14/16 reg #: P710236
OPTIMIZER BULL
 SRS ZEUS 0509Z SITZ UNCOMMON
SRS BENCHMARK 8105B PRK MISS MONTANA 503R
 SRS SHANNON 8105U SRS SAINT 0218S
 SRS SHANNON 0660S
 SRS UPRISING 0059U SRS SAINT 0218S
SRS EXPRESS 3166A SRS KYLA 0059K
 SRS EXPRESS 0965W SRS STRATEGY 607S
 SRS EXPRESS 0538R

| Birth Weight | 205 Weight | Wean Ratio | American Salers EPDs | | | | | |
|-------------------|------------|------------------|----------------------|-----|-------------------|-----|------|--|
| | | | BW | WW | YW | MWW | Milk | |
| 100 | 668 | 96 | +2.2 | +51 | +98 | +43 | +18 | |
| Sire Avg Birth Wt | | Dam Avg Birth Wt | Dam Wean Production | | POLLED 48% | | | |
| 13@89 | | 2@93 | 2@99 | | BLACK | | | |

- A long-sided bull whose mother has a great phenotype

98 **SRS BENCHMARK 3149D**
 tattoo: SRS3149D birth: 2/13/16 reg #: P710232
OPTIMIZER BULL
 SRS ZEUS 0509Z SITZ UNCOMMON
SRS BENCHMARK 8105B PRK MISS MONTANA 503R
 SRS SHANNON 8105U SRS SAINT 0218S
 SRS SHANNON 0660S
 TOMBSTONE 050 SITZ UPWARD 307R
SRS FOOTLOOSE 3149A MYTTY COUNTESS 906
 SRS FOOTLOOSE 9927J SRS FOCUS 9403F
 SRS FOOTLOOSE 9644F

| Birth Weight | 205 Weight | Wean Ratio | American Salers EPDs | | | | | |
|-------------------|------------|------------------|----------------------|-----|-------------------|-----|------|--|
| | | | BW | WW | YW | MWW | Milk | |
| 84 | 675 | 97 | +0.1 | +49 | +87 | +47 | +23 | |
| Sire Avg Birth Wt | | Dam Avg Birth Wt | Dam Wean Production | | POLLED 50% | | | |
| 13@89 | | 2@84 | 2@104 | | BLACK | | | |

- A moderate, thick-ended bull whose mother is a full sister to Ariat
- Heifer Bull Potential

99 **SRS BENCHMARK 1093D**
 tattoo: SRS1093D birth: 2/11/16 reg #: P710222
OPTIMIZER BULL
 SRS ZEUS 0509Z SITZ UNCOMMON
SRS BENCHMARK 8105B PRK MISS MONTANA 503R
 SRS SHANNON 8105U SRS SAINT 0218S
 SRS SHANNON 0660S
 SRS TRADEMARK 732T CONNEALY ONWARD
SRS JULIET 1093X OX BOW EMMA E 732
 SRS JULIET 9733G SRS SKALKAHO 8425E
 SRS JULIET 9026Z

| Birth Weight | 205 Weight | Wean Ratio | American Salers EPDs | | | | | |
|-------------------|------------|------------------|----------------------|-----|-------------------------|-----|------|--|
| | | | BW | WW | YW | MWW | Milk | |
| 94 | 702 | 101 | +1.3 | +53 | +91 | +49 | +23 | |
| Sire Avg Birth Wt | | Dam Avg Birth Wt | Dam Wean Production | | POLLED 46.90% | | | |
| 13@89 | | 5@86 | 5@100 | | HOMOZYGOUS BLACK | | | |

- Long made bull



SRS Benchmark 8105B

Salers Average EPDs BW +2 WW +32.7 YW +63.3 MWW +34.7 Milk +18.3 note - EPDs cannot be compared across breeds

100 SRS BENCHMARK 2137D

tattoo: SRS2137D birth: 2/4/16 reg #: P710230
OPTIMIZER BULL
 SRS ZEUS 0509Z SITZ UNCOMMON
SRS BENCHMARK 8105B PRK MISS MONTANA 503R
 SRS SHANNON 8105U SRS SAINT 0218S
 SRS SHANNON 0660S

S A V UNTOUCHABLE 8665
 VERMILION PRIDE 8071
 SRS XHIBIT 8071X
SRS BRIANNA 2137Z
 SRS BRIANNA 0320N D 360 BLACK POWER HOUSE
 SRS BRIANNA 9250B

| Birth Weight | 205 Weight | Wean Ratio | American Salers EPDs | | | | |
|-------------------|------------|------------------|----------------------|-----|-------------------|-----|------|
| | | | BW | WW | YW | MWW | Milk |
| 81 | 682 | 98 | -0.3 | +47 | +85 | +42 | +19 |
| Sire Avg Birth Wt | | Dam Avg Birth Wt | Dam Wean Production | | POLLED 50% | | |
| 13@89 | | 3@71 | 3@91 | | BLACK | | |

• Heifer Bull Potential



REFERENCE SIRE

DJF Border Line 815A

101 SRS BENCHMARK 2165D

tattoo: SRS2165D birth: 2/3/16 reg #: P710228
OPTIMIZER BULL
 SRS ZEUS 0509Z SITZ UNCOMMON
SRS BENCHMARK 8105B PRK MISS MONTANA 503R
 SRS SHANNON 8105U SRS SAINT 0218S
 SRS SHANNON 0660S

SRS UPRISING 0059U
SRS LACIE 2165Z
 SRS LACIE 0942W SRS SAINT 0218S
 SRS KYLA 0059K
 SRS TRADEMARK 732T
 SRS LACIE 0301N

| Birth Weight | 205 Weight | Wean Ratio | American Salers EPDs | | | | |
|-------------------|------------|------------------|----------------------|-----|----------------------|-----|------|
| | | | BW | WW | YW | MWW | Milk |
| 91 | 636 | 92 | +0.3 | +43 | +88 | +38 | +17 |
| Sire Avg Birth Wt | | Dam Avg Birth Wt | Dam Wean Production | | POLLED 49.60% | | |
| 13@89 | | 3@85 | 3@92 | | BLACK | | |

102 SRS BLOCKBUSTER 2118D

tattoo: SRS2118D birth: 2/21/16 reg #: P710270
OPTIMIZER BULL
 SOO LINE MOTIVE 9016 HF KODIAK 5R
SRS BLOCKBUSTER 2256B TLA BEAUTY 5R
 SRS ROSE 2256Z TOMBSTONE 050
 S R S ROSE 6148S

SRS WIDELOAD 0305W
SRS BRIANNA 2118Z
 SRS BRIANNA 0979W MAC TORRINGTON 139T
 SRS RUSSETT 0305N
 SRS TULSA 9114T
 SRS BRIANNA 0636S

| Birth Weight | 205 Weight | Wean Ratio | American Salers EPDs | | | | |
|-------------------|------------|------------------|----------------------|-----|----------------------|-----|------|
| | | | BW | WW | YW | MWW | Milk |
| 95 | 696 | 100 | +0.8 | +44 | +86 | +40 | +18 |
| Sire Avg Birth Wt | | Dam Avg Birth Wt | Dam Wean Production | | POLLED 37.50% | | |
| 20@90 | | 3@95 | 3@103 | | BLACK | | |

- Blockbuster was a top Motive son that we raised in 2014.
- We used this bull as we admired his heavy muscling, structural correctness, excellent feet, and stylish nature.
- Blockbuster calves are stamped with the same phenotype, they are sound made and thick.
- This son is a really thick-made bull out of a beautiful-uddered cow



REFERENCE SIRE

SRS Blockbuster 2256B

103 SRS BORDERLINE 2193D

tattoo: SRS2193D birth: 1/31/16 reg #: P710156
OPTIMIZER BULL
 C-BAR EVOLUTION 107Y TR COLT 45 UT806
DJF BORDER LINE 815A LGS ABBY 689S
 STCY UNITY 815U S NEBRASKA 330N
 STCY NATALIE 315N

SRS UNREAL 0151U
SRS LACE 2193Z
 SRS LACE 9118W SRS MARKSMAN 0059M
 SRS LYNN 0151L
 SRS RECRUIT 0122R
 SRS LACE 7136T

| Birth Weight | 205 Weight | Wean Ratio | American Salers EPDs | | | | |
|-------------------|------------|------------------|----------------------|-----|----------------------|-----|------|
| | | | BW | WW | YW | MWW | Milk |
| 81 | 702 | 101 | -0.1 | +50 | +89 | +44 | +20 |
| Sire Avg Birth Wt | | Dam Avg Birth Wt | Dam Wean Production | | POLLED 49.50% | | |
| 11@82 | | 2@87 | 2@104 | | RED | | |

- Border Line was the 2015 high selling bull in the breed
- He is extremely correct on his feet and legs
- Lot 103 is a good red bull out of a full sister to Yakima
- Heifer Bull Potential

104 SRS BORDERLINE 1193D

tattoo: SRS1193D birth: 2/10/16 reg #: P710154
OPTIMIZER BULL
 C-BAR EVOLUTION 107Y TR COLT 45 UT806
DJF BORDER LINE 815A LGS ABBY 689S
 STCY UNITY 815U S NEBRASKA 330N
 STCY NATALIE 315N

SRS WRANGLER 592W
SRS LACE 1193 Y
 SRS LACE 9954J SITZ ONWARD 495R
 VERMILION ELIMINATOR 1338
 SRS BOUNTY 8621F
 SRS CHANTILLY 9336C

| Birth Weight | 205 Weight | Wean Ratio | American Salers EPDs | | | | |
|-------------------|------------|------------------|----------------------|-----|----------------------|-----|------|
| | | | BW | WW | YW | MWW | Milk |
| 83 | 683 | 98 | +1.1 | +47 | +85 | +42 | +18 |
| Sire Avg Birth Wt | | Dam Avg Birth Wt | Dam Wean Production | | POLLED 46.90% | | |
| 11@82 | | 4@83 | 4@98 | | BLACK | | |

- A long-sided bull out an attractive, excellent-uddered cow
- Heifer Bull Potential

105 SRS BORDERLINE 4148D

tattoo: SRS4148D birth: 2/1/16 reg #: S710158
OPTIMIZER BULL
 C-BAR EVOLUTION 107Y TR COLT 45 UT806
DJF BORDER LINE 815A LGS ABBY 689S
 STCY UNITY 815U S NEBRASKA 330N
 STCY NATALIE 315N

SRS ZEUS 0509Z SITZ UNCOMMON
SRS BAUBLE 4148B PRK MISS MONTANA 503R
 SRS BAUBLE 0780T SITZ LEAD ON 451R
 SRS BAUBLE 0313N

| Birth Weight | 205 Weight | Wean Ratio | American Salers EPDs | | | | |
|-------------------|------------|------------------|----------------------|-----|--------------------|-----|------|
| | | | BW | WW | YW | MWW | Milk |
| 91 | 670 | 97 | +0.1 | +49 | +87 | +41 | +17 |
| Sire Avg Birth Wt | | Dam Avg Birth Wt | Dam Wean Production | | SCURRED 50% | | |
| 11@82 | | 1@91 | 1@97 | | RED | | |



REFERENCE
SIRE

SRS Bottom Line 978B



MATERNAL
BROTHER

SRS American 0984C,
Maternal Brother to Lot 108

106 SRS BOTTOMLINE 3117D

tattoo: SRS3117D birth: 2/3/16 reg #: P710189
OPTIMIZER BULL
 SOO LINE MOTIVE 9016 HF KODIAK 5R
SRS BOTTOM LINE 978B TLA BEAUTY 5R
 SRS JULIET 0584R MAC LANSING 302L
 SRS JULIET 9609F
 SRS UNREAL 0151U SRS MARKSMAN 0059M
SRS SAILOR 3117A SRS LYNN 0151L
 SRS SAILOR 8107U SRS SAINT 0218S
 SRS SAILOR 0667S

| Birth Weight | 205 Weight | Wean Ratio | American Salers EPDs | | | | |
|-------------------|------------|------------------|----------------------|-----|---------------|-----|------|
| | | | BW | WW | YW | MWW | Milk |
| 93 | 745 | 107 | +2.2 | +54 | +90 | +49 | +22 |
| Sire Avg Birth Wt | | Dam Avg Birth Wt | Dam Wean Production | | POLLED 50.30% | | |
| 34@90 | | 2@81 | 2@104 | | BLACK | | |

- Bottomline is a deep, extremely thick-made bull
- His full sisters did an absolutely phenomenal job as first calf heifers
- This son is long, and soggy, and has been extremely thick since day one



LOT
107

107 SRS BOTTOMLINE 2107D

tattoo: SRS2107D birth: 2/6/16 reg #: P710179
OPTIMIZER BULL
 SOO LINE MOTIVE 9016 HF KODIAK 5R
SRS BOTTOM LINE 978B TLA BEAUTY 5R
 SRS JULIET 0584R MAC LANSING 302L
 SRS JULIET 9609F
 SRS WIDELoad 0305W MAC TORRINGTON 139T
SRS JULIET 2107Z SRS RUSSETT 0305N
 SRS JULIET 0911W SRS SAFE BET 9529S
 SRS JULIET 0584R

| Birth Weight | 205 Weight | Wean Ratio | American Salers EPDs | | | | |
|-------------------|------------|------------------|----------------------|-----|------------------|-----|------|
| | | | BW | WW | YW | MWW | Milk |
| 83 | 688 | 99 | -0.1 | +42 | +77 | +43 | +23 |
| Sire Avg Birth Wt | | Dam Avg Birth Wt | Dam Wean Production | | POLLED 75% | | |
| 34@90 | | 3@79 | 3@97 | | HOMOZYGOUS BLACK | | |

- An attractive patterned bull with lots of length
- Heifer Bull Potential

108 SRS BOTTOMLINE 0984D

tattoo: SRS0984D birth: 1/31/16 reg #: P710171
OPTIMIZER BULL
 SOO LINE MOTIVE 9016 HF KODIAK 5R
SRS BOTTOM LINE 978B TLA BEAUTY 5R
 SRS JULIET 0584R MAC LANSING 302L
 SRS JULIET 9609F
 SRS RECRUIT 0122R BT RIGHT TIME 24J
SRS SEIKO 0984W SRS AURA 0122L
 SRS SEIKO 0670S SRS NEVADA 9378N
 SRS PRICELESS 0447P

| Birth Weight | 205 Weight | Wean Ratio | American Salers EPDs | | | | |
|-------------------|------------|------------------|----------------------|-----|---------------|-----|------|
| | | | BW | WW | YW | MWW | Milk |
| 81 | 686 | 99 | 0.0 | +37 | +73 | +43 | +25 |
| Sire Avg Birth Wt | | Dam Avg Birth Wt | Dam Wean Production | | POLLED 50.10% | | |
| 34@90 | | 6@81 | 6@104 | | BLACK | | |

- A good bull that is a maternal brother to Battalion
- This cow never misses
- Heifer Bull Potential

109 SRS BOTTOMLINE 2138D

tattoo: SRS2138D birth: 3/29/16 reg #: P710181
OPTIMIZER BULL
 SOO LINE MOTIVE 9016 HF KODIAK 5R
SRS BOTTOM LINE 978B TLA BEAUTY 5R
 SRS JULIET 0584R MAC LANSING 302L
 SRS JULIET 9609F
 SRS XPERT 0881X SRS PATENT 0221P
SRS NOVELTY 2138Z SRS PRICELESS 0881U
 SRS NOVELTY 0361N SRS JAG 9394J
 SRS JENNY 9976J

| Birth Weight | 205 Weight | Wean Ratio | American Salers EPDs | | | | |
|-------------------|------------|------------------|----------------------|-----|---------------|-----|------|
| | | | BW | WW | YW | MWW | Milk |
| 98 | 765 | 106 | +4.1 | +54 | +101 | +51 | +24 |
| Sire Avg Birth Wt | | Dam Avg Birth Wt | Dam Wean Production | | POLLED 49.30% | | |
| 34@90 | | 3@92 | 3@107 | | BLACK | | |

- A thick, deep-made moderate bull out of a high performance dam



Optimizer Bulls



SRS Uprising 0650A,
Maternal Brother to Lot 110

110 SRS BOTTOMLINE 0650D

OPTIMIZER BULL tattoo: SRS0650D birth: 3/7/16 reg #: P710169
 SOO LINE MOTIVE 9016 HF KODIAK 5R
 SRS BOTTOM LINE 978B TLA BEAUTY 5R
 SRS JULIET 0584R MAC LANSING 302L
 SRS JULIET 9609F

SRS NEVADA 9378N SRS FOCUS 9403F
SRS SALLY 0650S RAIN LASS 207
 SRS KIM 0063K SRS HIGHTECH 9059H
 SRS DOLLY 9689F

| Birth Weight | 205 Weight | Wean Ratio | American Salers EPDs | | | | |
|-------------------|------------|------------------|----------------------|-----|----------------------|-----|------|
| | | | BW | WW | YW | MWW | Milk |
| 85 | 683 | 95 | +0.6 | +40 | +78 | +42 | +22 |
| Sire Avg Birth Wt | | Dam Avg Birth Wt | Dam Wean Production | | POLLED 37.50% | | |
| 34@90 | | 9@81 | 9@102 | | BLACK | | |

- An extremely attractive made bull
- Dam is a donor cow that is very stylish and great-uddered

111 SRS BULLSEYE 0862D

OPTIMIZER BULL tattoo: SRS0862D birth: 2/7/16 reg #: S710160
 SOO LINE MOTIVE 9016 HF KODIAK 5R
SRS BULLSEYE 592B TLA BEAUTY 5R
 SRS JULIET 0584R MAC LANSING 302L
 SRS JULIET 9609F

S A V 004 DENSITY 4336 S A V 8180 TRAVELER 004
SRS COMPLIMENT 0862U S A V MAY 7238
 SRS COMPLIMENT 0118L SRS JUSTICE 9026J
 SRS COMPLIMENT 9831H

| Birth Weight | 205 Weight | Wean Ratio | American Salers EPDs | | | | |
|-------------------|------------|------------------|----------------------|-----|--------------------|-----|------|
| | | | BW | WW | YW | MWW | Milk |
| 95 | 704 | 101 | +2.7 | +48 | +87 | +42 | +18 |
| Sire Avg Birth Wt | | Dam Avg Birth Wt | Dam Wean Production | | SCURRED 50% | | |
| 13@89 | | 7@91 | 7@101 | | BLACK | | |

- Bullseye was a top selling bull in our 2015 sale that is clean made, thick, and tight sheathed
- He is a full brother to Bottomline
- Lot 111 is a powerfully constructed bull out of a beautiful Density daughter



SRS Bullseye 592B

112 SRS BULLSEYE 4137D

tattoo: SRS4137D birth: 1/26/16 reg #: P710165
OPTIMIZER BULL
 SOO LINE MOTIVE 9016 HF KODIAK 5R
SRS BULLSEYE 592B TLA BEAUTY 5R
 SRS JULIET 0584R MAC LANSING 302L
 SRS JULIET 9609F
 SRS ZEUS 0509Z SITZ UNCOMMON
SRS NOVELTY 4137B PRK MISS MONTANA 503R
 SRS NOVELTY 0361N SRS JAG 9394J
 SRS JENNY 9976J

| Birth Weight | 205 Weight | Wean Ratio | American Salers EPDs | | | | |
|-------------------|------------|------------------|----------------------|-----|----------------------|-----|------|
| | | | BW | WW | YW | MWW | Milk |
| 88 | 639 | 92 | +1.0 | +34 | +72 | +38 | +20 |
| Sire Avg Birth Wt | | Dam Avg Birth Wt | Dam Wean Production | | POLLED 49.20% | | |
| 13@89 | | 1@88 | 1@92 | | BLACK | | |

- Another Bullseye son that will catch your eye

113 SRS BULLSEYE 3168D

tattoo: SRS3168D birth: 2/1/16 reg #: P710161
OPTIMIZER BULL
 SOO LINE MOTIVE 9016 HF KODIAK 5R
SRS BULLSEYE 592B TLA BEAUTY 5R
 SRS JULIET 0584R MAC LANSING 302L
 SRS JULIET 9609F

SRS NEVADA 9378N SRS FOCUS 9403F
SRS RESOURCE 3168A RAIN LASS 207
 SRS RESOURCE 1092X PRK TONKA 298T
 SRS RESOURCE 7115T

| Birth Weight | 205 Weight | Wean Ratio | American Salers EPDs | | | | |
|-------------------|------------|------------------|----------------------|-----|----------------------|-----|------|
| | | | BW | WW | YW | MWW | Milk |
| 92 | 652 | 94 | +0.8 | +33 | +68 | +35 | +19 |
| Sire Avg Birth Wt | | Dam Avg Birth Wt | Dam Wean Production | | POLLED 49.20% | | |
| 13@89 | | 2@88 | 2@95 | | BLACK | | |

114 SRS BULLSEYE 4132D

tattoo: SRS4132D birth: 1/27/16 reg #: P710163
OPTIMIZER BULL
 SOO LINE MOTIVE 9016 HF KODIAK 5R
SRS BULLSEYE 592B TLA BEAUTY 5R
 SRS JULIET 0584R MAC LANSING 302L
 SRS JULIET 9609F

SRS WESTERN 8124Z TOMBSTONE 050
SRS PRETTY FACE 4132B S R S ROSE 8124U
 SRS PRETTY FACE 0121L SRS FOCUS 9403F
 SRS LACE 9954J

| Birth Weight | 205 Weight | Wean Ratio | American Salers EPDs | | | | |
|-------------------|------------|------------------|----------------------|-----|-------------------------|-----|------|
| | | | BW | WW | YW | MWW | Milk |
| 85 | 628 | 90 | +1.8 | +37 | +74 | +35 | +17 |
| Sire Avg Birth Wt | | Dam Avg Birth Wt | Dam Wean Production | | POLLED 50% | | |
| 13@89 | | 1@85 | 1@90 | | HOMOZYGOUS BLACK | | |

- A moderate, chunk of a bull





REFERENCE
SIRE

Leachman Consensus 4566



REFERENCE
SIRE

SRS Bonus 0724B

115 SRS BLACK HAWK 2136D

OPTIMIZER BULL tattoo: SRS2136D birth: 3/6/16 reg #: P710856

CONNEALY CONSENSUS 7229
LEACHMAN CONSENSUS 4566
LEACHMAN BURGESS 7205

SRS WDA 270W
SRS FLAMINGO 2136Z
SRS FLAMINGO 0312N

CONNEALY CONSENSUS
BLUE LILLY OF CONANGA 16
N BAR EMULATION EXT
LEACHMAN BURGESS 9011
S A V 004 DENSITY 4336
SRS FOOTLOOSE 9927J
RRF WORLD WIDE 38L
SRS FLAMINGO 9648F

| Birth Weight | 205 Weight | Wean Ratio | American Salers EPDs | | | | |
|-------------------|------------|------------------|----------------------|-----|-------------------------|-----|------|
| | | | BW | WW | YW | MWW | Milk |
| 99 | 806 | 112 | +3.6 | +61 | +110 | +50 | +19 |
| Sire Avg Birth Wt | | Dam Avg Birth Wt | Dam Wean Production | | POLLED 37.50% | | |
| 20@89 | | 3@89 | 3@104 | | HOMOZYGOUS BLACK | | |

- Leachman Consensus 4566 was our top pick out of the 2015 Leachman Sale
- We picked him for his attractive pattern and thickness as well as having a well-made, good-uddered dam
- Lot 115 is an extremely high-performance bull that is long and thick

116 SRS BLACK HAWK 0634D

OPTIMIZER BULL tattoo: SRS0634D birth: 3/1/16 reg #: P710854

CONNEALY CONSENSUS 7229
LEACHMAN CONSENSUS 4566
LEACHMAN BURGESS 7205

SRS NETWORK 0014N
SRS ECLIPSE 0634S
SRS ECLIPSE 9722G

CONNEALY CONSENSUS
BLUE LILLY OF CONANGA 16
N BAR EMULATION EXT
LEACHMAN BURGESS 9011
MAC LANSING 302L
SRS BEGUILE 0014K
SRS MILE MARKER 8529C
SRS ECLIPSE 9322C

| Birth Weight | 205 Weight | Wean Ratio | American Salers EPDs | | | | |
|-------------------|------------|------------------|----------------------|-----|-------------------|-----|------|
| | | | BW | WW | YW | MWW | Milk |
| 95 | 705 | 102 | +1.7 | +44 | +87 | +42 | +19 |
| Sire Avg Birth Wt | | Dam Avg Birth Wt | Dam Wean Production | | POLLED 50% | | |
| 20@89 | | 9@83 | 9@100 | | BLACK | | |

- Another long-made bull out of a dam that has stood the test of time

117 SRS BONUS 4181D

OPTIMIZER BULL tattoo: SRS4181D birth: 2/17/16 reg #: P710204

TOMBSTONE 050
SRS BONUS 0724B
SRS FOOTLOOSE 9927J

SOO LINE MOTIVE 9016
SRS JULIET 4181B
SRS JULIET 0584R

SITZ UPWARD 307R
MYTTY COUNTESS 906
SRS FOCUS 9403F
SRS FOOTLOOSE 9644F

HF KODIAK 5R
TLA BEAUTY 5R
MAC LANSING 302L
SRS JULIET 9609F

| Birth Weight | 205 Weight | Wean Ratio | American Salers EPDs | | | | |
|-------------------|------------|------------------|----------------------|-----|-------------------|-----|------|
| | | | BW | WW | YW | MWW | Milk |
| 88 | 644 | 93 | +0.6 | +38 | +75 | +38 | +19 |
| Sire Avg Birth Wt | | Dam Avg Birth Wt | Dam Wean Production | | POLLED 50% | | |
| 4@80 | | 1@88 | 1@93 | | RED | | |

- Bonus is a full brother to Ariat that we used for our heifers
- Lot 117 is out of a full sister to Bottomline and Bullseye

118 SRS BOND 3136D

OPTIMIZER BULL tattoo: SRS3136D birth: 2/13/16 reg #: P710218

SRS YUMA 072Y
SRS BOND 0838B
SRS FINICKY 0838U

SRS YAMAHA 0717Y
SRS AURA 3136A
SRS AURA 0933W

DJF WHISKEY RIVER 9006W
SRS RUSSETT 0305N
CRO SURVEY 615S
SRS FINICKY 9809H

MYTTY THUNDERSTRUCK
SRS FOOTLOOSE 9927J
SRS STRATEGY 607S
SRS AURA 0122L

| Birth Weight | 205 Weight | Wean Ratio | American Salers EPDs | | | | |
|-------------------|------------|------------------|----------------------|-----|-------------------|-----|------|
| | | | BW | WW | YW | MWW | Milk |
| 74 | 698 | 101 | 0.0 | +47 | +90 | +48 | +24 |
| Sire Avg Birth Wt | | Dam Avg Birth Wt | Dam Wean Production | | POLLED 75% | | |
| 9@87 | | 2@76 | 2@101 | | BLACK | | |

- A long sided bull out of Bond
- Heifer Bull Potential

Climb That Mountain!

Miller Angus Ranch bought our first bull from the Skinner family in 1995. In 2007 we bought a Lead On son out of a very good cow from the Skinner Ranch. That bull's daughters are stand out cows in our herd.

We moved to Salmon, Idaho from Montana in 2012. In Montana, our cows were on irrigated pasture with very few hills to climb. With our Salmon Ranch came 5000 acres of BLM ground ranging from 4000 to 7000 feet in elevation. Quite an adjustment for those cows! But adjust they did and learned to climb those hills, work for a living, bring back a nice calf, and breed back in time. We try to calve in 60 days. In 2016, our conception rate was 3 open and 5 late cows, which we were extremely pleased with!

We have always found Ron and his family extremely helpful and knowledgeable and they stand behind their program 100%. A big thank you from the Millers to the Skinners!

Miller Angus Ranch • John and Ruby Miller family • Salmon, Idaho





REFERENCE SIRE

SRS Agreement 0361A



MATERNAL BROTHER

SRS American 0472A
Maternal Brother to Lot 122

119 SRS AGREEMENT 3175D

OPTIMIZER BULL tattoo: SRS3175D birth: 2/6/16 reg #: P710150
 SRS YAKIMA 9118Y SRS UNREAL 0151U
SRS AGREEMENT 0361A SRS LACE 9118W
 SRS NOVELTY 0361N SRS JAG 9394J
 SRS JENNY 9976J
 SRS WDA 270W S A V 004 DENSITY 4336
SRS FORBIDDEN 3175A SRS FOOTLOOSE 9927J
 SRS FORBIDDEN 1190 Y SRS UNREAL 0151U
 SRS FORBIDDEN 8102U

| Birth Weight | 205 Weight | Wean Ratio | American Salers EPDs | | | | |
|-------------------|------------|------------------|----------------------|-----|-------------------------|-----|------|
| | | | BW | WW | YW | MWW | Milk |
| 93 | 708 | 102 | +1.3 | +52 | +94 | +43 | +17 |
| Sire Avg Birth Wt | | Dam Avg Birth Wt | Dam Wean Production | | POLLED 48.30% | | |
| 17@87 | | 2@92 | 2@101 | | HOMOZYGOUS BLACK | | |

- SRS Agreement was a top bull that sold in 2013, his daughters are at the very top of our replacement heifers
- Lot 119 is long-sided bull that is doing a great job

120 SRS AGREEMENT 0870D

OPTIMIZER BULL tattoo: SRS0870D birth: 2/8/16 reg #: P710146
 SRS YAKIMA 9118Y SRS UNREAL 0151U
SRS AGREEMENT 0361A SRS LACE 9118W
 SRS NOVELTY 0361N SRS JAG 9394J
 SRS JENNY 9976J
 S A V 004 DENSITY 4336 S A V 8180 TRAVELER 004
SRS HANKY PANKY 0870U S A V MAY 7238
 SRS HANKY PANKY 0335N D 360 BLACK POWER HOUSE
 SRS HANKY PANKY 9863H

| Birth Weight | 205 Weight | Wean Ratio | American Salers EPDs | | | | |
|-------------------|------------|------------------|----------------------|-----|-------------------------|-----|------|
| | | | BW | WW | YW | MWW | Milk |
| 85 | 641 | 92 | +0.4 | +38 | +77 | +36 | +17 |
| Sire Avg Birth Wt | | Dam Avg Birth Wt | Dam Wean Production | | POLLED 45.90% | | |
| 17@87 | | 7@84 | 6@98 | | HOMOZYGOUS BLACK | | |

- A very attractive-patterned bull whose full brother was a top bull in last year's sale
- Dam is a moderate, broody, and extremely thick cow with a beautiful udder

121 SRS AGREEMENT 2139D

OPTIMIZER BULL tattoo: SRS2139D birth: 2/11/16 reg #: P710148
 SRS YAKIMA 9118Y SRS UNREAL 0151U
SRS AGREEMENT 0361A SRS LACE 9118W
 SRS NOVELTY 0361N SRS JAG 9394J
 SRS JENNY 9976J
 SRS XTRA 0347X SRS UPRISING 0059U
SRS PRICELESS 2139Z SRS NORAH 0347N
 SRS PRICELESS 0447P SPRINGDALE INDEPENDANCE
 SRS JESSICA 9975J

| Birth Weight | 205 Weight | Wean Ratio | American Salers EPDs | | | | |
|-------------------|------------|------------------|----------------------|-----|-------------------|-----|------|
| | | | BW | WW | YW | MWW | Milk |
| 80 | 672 | 97 | -0.2 | +40 | +80 | +41 | +21 |
| Sire Avg Birth Wt | | Dam Avg Birth Wt | Dam Wean Production | | POLLED 49% | | |
| 17@87 | | 3@78 | 3@98 | | BLACK | | |

- Heifer Bull Potential

122 SRS BATTALION 0472D

OPTIMIZER BULL tattoo: SRS0472D birth: 1/27/16 reg #: P710242
 SRS ZEUS 0509Z SITZ UNCOMMON
SRS BATTALION 0984B PRK MISS MONTANA 503R
 SRS SEIKO 0984W SRS RECRUIT 0122R
 SRS SEIKO 0670S
 SRS MARKSMAN 0059M SPRINGDALE INDEPENDANCE
SRS PONDERA 0472P SRS KYLA 0059K
 SRS DAINTY 9478D THOMPSON BIG WHEEL 111
 SRS BONNER 8970Y

| Birth Weight | 205 Weight | Wean Ratio | American Salers EPDs | | | | |
|-------------------|------------|------------------|----------------------|-----|-------------------------|-----|------|
| | | | BW | WW | YW | MWW | Milk |
| 74 | 669 | 96 | -1.7 | +40 | +78 | +43 | +23 |
| Sire Avg Birth Wt | | Dam Avg Birth Wt | Dam Wean Production | | POLLED 49.10% | | |
| 22@84 | | 11@82 | 11@101 | | HOMOZYGOUS BLACK | | |

- Another set of good Battalion sons
- This son is a well put together bull that is a Maternal Brother to SRS American
- Heifer Bull Potential

123 SRS BATTALION 8114D

OPTIMIZER BULL tattoo: SRS8114D birth: 2/4/16 reg #: P710251
 SRS ZEUS 0509Z SITZ UNCOMMON
SRS BATTALION 0984B PRK MISS MONTANA 503R
 SRS SEIKO 0984W SRS RECRUIT 0122R
 SRS SEIKO 0670S
 S A V 004 DENSITY 4336 S A V 8180 TRAVELER 004
SRS LACE 8114U S A V MAY 7238
 SRS LACE 9954J SRS BOUNTY 8621F
 SRS CHANTILLY 9336C

| Birth Weight | 205 Weight | Wean Ratio | American Salers EPDs | | | | |
|-------------------|------------|------------------|----------------------|-----|----------------------|-----|------|
| | | | BW | WW | YW | MWW | Milk |
| 80 | 711 | 102 | -0.5 | +48 | +91 | +47 | +23 |
| Sire Avg Birth Wt | | Dam Avg Birth Wt | Dam Wean Production | | POLLED 46.90% | | |
| 22@84 | | 7@83 | 7@105 | | BLACK | | |

- Dam is a beautiful female with a perfect udder
- Heifer Bull Potential



REFERENCE SIRE

SRS Battalion 0984B

Optimizer Bulls

124 SRS BATTALION 4139D

OPTIMIZER BULL tattoo: SRS4139D birth: 2/2/16 reg #: P710263
 SRS ZEUS 0509Z SITZ UNCOMMON
SRS BATTALION 0984B PRK MISS MONTANA 503R
 SRS SEIKO 0984W SRS RECRUIT 0122R
 SRS SEIKO 0670S

SRS SPARTACUS 0670Z SRS XTRA 0347X
SRS PEARL 4139B SRS SEIKO 0670S
 SRS PEARL 0450P CMC MR JAMACA M44K
 SRS DONNA 0291M

| Birth Weight | 205 Weight | Wean Ratio | American Salers EPDs | | | | |
|-------------------|------------|------------------|----------------------|-----|-------------------------|-----|------|
| | | | BW | WW | YW | MWW | Milk |
| 93 | 665 | 96 | +0.7 | +46 | +89 | +44 | +21 |
| Sire Avg Birth Wt | | Dam Avg Birth Wt | Dam Wean Production | | POLLED 48.40% | | |
| 22@84 | | 1@93 | 1@96 | | HOMOZYGOUS BLACK | | |



SRS Bottom Line 978B

125 SRS BATTALION 0780D

OPTIMIZER BULL tattoo: SRS0780D birth: 2/8/16 reg #: P710246
 SRS ZEUS 0509Z SITZ UNCOMMON
SRS BATTALION 0984B PRK MISS MONTANA 503R
 SRS SEIKO 0984W SRS RECRUIT 0122R
 SRS SEIKO 0670S

SITZ LEAD ON 451R CONNEALY LEAD ON
SRS BAUBLE 0780T SITZ BLACKBIRD 124N
 SRS BAUBLE 0313N SRS HAWKEYE 9026H
 SRS BAUBLE 9705G

| Birth Weight | 205 Weight | Wean Ratio | American Salers EPDs | | | | |
|-------------------|------------|------------------|----------------------|-----|-------------------|-----|------|
| | | | BW | WW | YW | MWW | Milk |
| 96 | 662 | 95 | +0.7 | +45 | +86 | +41 | +19 |
| Sire Avg Birth Wt | | Dam Avg Birth Wt | Dam Wean Production | | POLLED 50% | | |
| 22@84 | | 8@87 | 8@96 | | BLACK | | |

- A long-sided bull out of a very attractive dam

126 SRS BATTALION 0936D

OPTIMIZER BULL tattoo: SRS0936D birth: 2/5/16 reg #: P710255
 SRS ZEUS 0509Z SITZ UNCOMMON
SRS BATTALION 0984B PRK MISS MONTANA 503R
 SRS SEIKO 0984W SRS RECRUIT 0122R
 SRS SEIKO 0670S

SRS NEVADA 9378N SRS FOCUS 9403F
SRS LIBERTY 0936W RAIN LASS 207
 SRS LIBERTY 0163L SRS GUSTO 9250G
 SRS DELUXE 9480D

| Birth Weight | 205 Weight | Wean Ratio | American Salers EPDs | | | | |
|-------------------|------------|------------------|----------------------|-----|-------------------------|-----|------|
| | | | BW | WW | YW | MWW | Milk |
| 93 | 695 | 100 | +0.9 | +44 | +85 | +43 | +22 |
| Sire Avg Birth Wt | | Dam Avg Birth Wt | Dam Wean Production | | POLLED 49.30% | | |
| 22@84 | | 6@91 | 6@98 | | HOMOZYGOUS BLACK | | |



127 SRS BOTTOMLINE 2135D

OPTIMIZER BULL tattoo: SRS2135D birth: 3/23/16 reg #: S710177
 SOO LINE MOTIVE 9016 HF KODIAK 5R
SRS BOTTOM LINE 978B TLA BEAUTY 5R
 SRS JULIET 0584R MAC LANSING 302L
 SRS JULIET 9609F

SRS TRADEMARK 732T CONNEALY ONWARD
SRS RUSSETT 2135Z OX BOW EMMA E 732
 SRS RUSSETT 0305N SRS LATIGO 9633L
 SRS RUSSETT RED 9205B

| Birth Weight | 205 Weight | Wean Ratio | American Salers EPDs | | | | |
|-------------------|------------|------------------|----------------------|-----|--------------------|-----|------|
| | | | BW | WW | YW | MWW | Milk |
| 94 | 755 | 105 | +1.8 | +54 | +97 | +52 | +25 |
| Sire Avg Birth Wt | | Dam Avg Birth Wt | Dam Wean Production | | SCURRED 50% | | |
| 34@90 | | 3@92 | 3@110 | | BLACK | | |

- Another set of Bottomline sons
- Lot 127 is an extremely thick bull that is out of a high performance female

128 SRS BOTTOMLINE 1057D

OPTIMIZER BULL tattoo: SRS1057D birth: 2/8/16 reg #: P710173
 SOO LINE MOTIVE 9016 HF KODIAK 5R
SRS BOTTOM LINE 978B TLA BEAUTY 5R
 SRS JULIET 0584R MAC LANSING 302L
 SRS JULIET 9609F

SITZ LEAD ON 451R CONNEALY LEAD ON
SRS JULIET 1057X SITZ BLACKBIRD 124N
 SRS JULIET 0804U OPP SPECIAL DUTY 626S
 SRS JULIET 0218M

| Birth Weight | 205 Weight | Wean Ratio | American Salers EPDs | | | | |
|-------------------|------------|------------------|----------------------|-----|-------------------|-----|------|
| | | | BW | WW | YW | MWW | Milk |
| 93 | 743 | 107 | +2.3 | +55 | +98 | +46 | +19 |
| Sire Avg Birth Wt | | Dam Avg Birth Wt | Dam Wean Production | | POLLED 50% | | |
| 34@90 | | 5@86 | 5@102 | | BLACK | | |

129 SRS BOTTOMLINE 2130D

OPTIMIZER BULL tattoo: SRS2130D birth: 1/31/16 reg #: P710196
 SOO LINE MOTIVE 9016 HF KODIAK 5R
SRS BOTTOM LINE 978B TLA BEAUTY 5R
 SRS JULIET 0584R MAC LANSING 302L
 SRS JULIET 9609F

SRS TRADEMARK 732T CONNEALY ONWARD
SRS BLUE MOON 2130Z OX BOW EMMA E 732
 SRS BLUE MOON 0223M SRS HAWKEYE 9026H
 SRS BLUE MOON 9924J

| Birth Weight | 205 Weight | Wean Ratio | American Salers EPDs | | | | |
|-------------------|------------|------------------|----------------------|-----|-------------------|-----|------|
| | | | BW | WW | YW | MWW | Milk |
| 88 | 743 | 107 | +1.2 | +53 | +92 | +50 | +23 |
| Sire Avg Birth Wt | | Dam Avg Birth Wt | Dam Wean Production | | POLLED 50% | | |
| 34@90 | | 3@76 | 3@103 | | RED | | |

- A little bigger framed bull that is extremely long-sided

130 SRS BOTTOMLINE 2188D

tattoo: SRS2188D birth: 2/13/16 reg #: P710198
OPTIMIZER BULL
 SOO LINE MOTIVE 9016 HF KODIAK 5R
SRS BOTTOM LINE 978B TLA BEAUTY 5R
 SRS JULIET 0584R MAC LANSING 302L
 SRS JULIET 9609F
 SRS UNREAL 0151U SRS MARKSMAN 0059M
SRS AURA 2188Z SRS LYNN 0151L
 SRS AURA 0933W SRS STRATEGY 607S
 SRS AURA 0122L

| Birth Weight | 205 Weight | Wean Ratio | American Salers EPDs | | | | |
|-------------------|------------|------------------|----------------------|-----|----------------------|-----|------|
| | | | BW | WW | YW | MWW | Milk |
| 71 | 646 | 100 | +2.2 | +46 | +83 | +42 | +19 |
| Sire Avg Birth Wt | | Dam Avg Birth Wt | Dam Wean Production | | POLLED 50.30% | | |
| 34@90 | | 4@72 | 3@98 | | RED | | |

• Heifer Bull Potential

133 SRS BOTTOMLINE 2128D

tattoo: SRS2128D birth: 2/21/16 reg #: P710175
OPTIMIZER BULL
 SOO LINE MOTIVE 9016 HF KODIAK 5R
SRS BOTTOM LINE 978B TLA BEAUTY 5R
 SRS JULIET 0584R MAC LANSING 302L
 SRS JULIET 9609F
 SRS TRADEMARK 732T CONNEALY ONWARD
SRS CHARISMA 2128Z OX BOW EMMA E 732
 SRS CHARISMA 0134L SRS JUSTICE 9026J
 SRS CHARISMA 9331C

| Birth Weight | 205 Weight | Wean Ratio | American Salers EPDs | | | | |
|-------------------|------------|------------------|----------------------|-----|-------------------------|-----|------|
| | | | BW | WW | YW | MWW | Milk |
| 87 | 634 | 91 | +1.4 | +39 | +72 | +37 | +17 |
| Sire Avg Birth Wt | | Dam Avg Birth Wt | Dam Wean Production | | POLLED 50% | | |
| 34@90 | | 3@83 | 3@92 | | HOMOZYGOUS BLACK | | |

• Heifer Bull Potential

131 SRS BOTTOMLINE 3120D

tattoo: SRS3120D birth: 2/4/16 reg #: P710192
OPTIMIZER BULL
 SOO LINE MOTIVE 9016 HF KODIAK 5R
SRS BOTTOM LINE 978B TLA BEAUTY 5R
 SRS JULIET 0584R MAC LANSING 302L
 SRS JULIET 9609F
 SRS XHIBIT 8071X S A V UNTOUCHABLE 8665
SRS BLUE MOON 3120A VERMILION PRIDE 8071
 SRS BLUE MOON 0223M SRS HAWKEYE 9026H
 SRS BLUE MOON 9924J

| Birth Weight | 205 Weight | Wean Ratio | American Salers EPDs | | | | |
|-------------------|------------|------------------|----------------------|-----|-------------------|-----|------|
| | | | BW | WW | YW | MWW | Milk |
| 79 | 647 | 93 | +0.3 | +40 | +73 | +39 | +19 |
| Sire Avg Birth Wt | | Dam Avg Birth Wt | Dam Wean Production | | POLLED 50% | | |
| 34@90 | | 2@75 | 2@93 | | BLACK | | |

• Heifer Bull Potential

134 SRS BOTTOMLINE 2148D

tattoo: SRS2148D birth: 2/3/16 reg #: P710183
OPTIMIZER BULL
 SOO LINE MOTIVE 9016 HF KODIAK 5R
SRS BOTTOM LINE 978B TLA BEAUTY 5R
 SRS JULIET 0584R MAC LANSING 302L
 SRS JULIET 9609F
 MYTTY THUNDERSTRUCK CONNEALY THUNDER
SRS BRIDGER 2148Z SITZ EVERELDA ENTENSE 5038
 SRS BRIDGER 0603S SRS PHOENIX 0008P
 SRS BRIDGER 0003K

| Birth Weight | 205 Weight | Wean Ratio | American Salers EPDs | | | | |
|-------------------|------------|------------------|----------------------|-----|-------------------------|-----|------|
| | | | BW | WW | YW | MWW | Milk |
| 90 | 648 | 93 | +1.8 | +39 | +79 | +38 | +19 |
| Sire Avg Birth Wt | | Dam Avg Birth Wt | Dam Wean Production | | POLLED 50% | | |
| 34@90 | | 3@83 | 3@94 | | HOMOZYGOUS BLACK | | |

• Heifer Bull Potential

132 SRS BOTTOMLINE 3179D

tattoo: SRS3179D birth: 2/10/16 reg #: P710187
OPTIMIZER BULL
 SOO LINE MOTIVE 9016 HF KODIAK 5R
SRS BOTTOM LINE 978B TLA BEAUTY 5R
 SRS JULIET 0584R MAC LANSING 302L
 SRS JULIET 9609F
 SRS UNREAL 0151U SRS MARKSMAN 0059M
SRS LACE 3179A SRS LYNN 0151L
 SRS LACE 8114U S A V 004 DENSITY 4336
 SRS LACE 9954J

| Birth Weight | 205 Weight | Wean Ratio | American Salers EPDs | | | | |
|-------------------|------------|------------------|----------------------|-----|-------------------------|-----|------|
| | | | BW | WW | YW | MWW | Milk |
| 101 | 702 | 101 | +3.1 | +51 | +92 | +45 | +20 |
| Sire Avg Birth Wt | | Dam Avg Birth Wt | Dam Wean Production | | POLLED 48.70% | | |
| 34@90 | | 2@91 | 2@103 | | HOMOZYGOUS BLACK | | |

• A long, thick bull that will catch your eye



Sharing Knowledge

Batty Family Ranch is located in Vernal, Utah. We run cattle on two different mountain ranges in the summer time with elevation ranging from 7,000 feet to 9,500 feet. The bulls from Skinner Ranch have always held up for us with good feet, legs, and disposition. They range to places for feed that others won't. That is why I was interested in the Salers breed.

The cows from these bulls have been excellent mothers. They are very attentive to calves, have good udders, and raise and wean heavy calves.

With two separate mountain ranges I can get 5 to 6 years out of a bull. The cattle are problem free. With 350 head of mother cows we have 98.5% calving unassisted; that is everything to us. They have the depth, thickness, and a look that is always very impressive to buyers that view them.

Skinner Ranch has been willing to help me in any and all decisions that we have had and are always willing to share their knowledge with us.

They have always stood behind the bulls they have sold. One of the bulls we purchased had his feet go bad before they delivered him. They called me and we discussed it. They replaced it with another one sight unseen. They were also willing to get us a different one if we had not been happy with the replacement. We were very pleased.

I would recommend them to anyone.

Batty Family Ranch • Morgan W. Batty • Vernal, UT



REFERENCE
SIRE

SRS Bond 0838B



MATERNAL
BROTHER

SRS Zeus 0509Z

Maternal Brother to Lot 136

135 **SRS BOND 1105D**
SALERS BULL tattoo: SRS1105D birth: 2/10/16 reg #: P710214
 SRS YUMA 072Y DJF WHISKEY RIVER 9006W
SRS BOND 0838B SRS RUSSETT 0305N
 SRS FINICKY 0838U CRO SURVEY 615S
 SRS FINICKY 9809H
 SRS WIDELOAD 0305W MAC TORRINGTON 139T
SRS COLUMBIA 1105 Y SRS RUSSETT 0305N
 SRS COLUMBIA 0204M KAU PLD BLK GLADIATOR
 SRS COLUMBIA 9637F

| Birth Weight | 205 Weight | Wean Ratio | American Salers EPDs | | | | |
|-------------------|------------|------------------|----------------------|-----|-------------------------|-----|------|
| | | | BW | WW | YW | MWW | Milk |
| 97 | 771 | 111 | +2.8 | +62 | +114 | +58 | +27 |
| Sire Avg Birth Wt | | Dam Avg Birth Wt | Dam Wean Production | | POLLED PUREBRED | | |
| 9@87 | | 4@93 | 4@104 | | HOMOZYGOUS BLACK | | |

- Bond was a top Salers bull in our 2015 sale
- He was extremely long-sided and thick made
- His donor dam is a female that has done a phenomenal job in our herd
- This son is long, thick, deep and is out of a beautiful young female

136 **SRS BOND 0509D**
SALERS BULL tattoo: SRS0509D birth: 2/12/16 reg #: P710220
 SRS YUMA 072Y DJF WHISKEY RIVER 9006W
SRS BOND 0838B SRS RUSSETT 0305N
 SRS RAINBIRD 0844U SRS SAFE BET 9529S
 SRS NOKIA 9722N SRS RAINBIRD 0330N
PRK MISS MONTANA 503R MAC LANSING 302L
 PRK MISS MONTANA 313N SRS ECLIPSE 9722G
 RRF WORLD WIDE 38L
 SRS MISS MONTANA 9897H

| Birth Weight | 205 Weight | Wean Ratio | American Salers EPDs | | | | |
|-------------------|------------|------------------|----------------------|-----|----------------------------|-----|------|
| | | | BW | WW | YW | MWW | Milk |
| 100 | 748 | 108 | +3.5 | +51 | +90 | +55 | +30 |
| Sire Avg Birth Wt | | Dam Avg Birth Wt | Dam Wean Production | | POLLED 46.90% BLACK | | |
| 9@87 | | 10@89 | 9@105 | | | | |

- Maternal Brother to Zeus



MATERNAL
BROTHER

SRS Rowdy 1105C
 Maternal Brother to Lot 135

137 **SRS BOND 3107D**
SALERS BULL tattoo: SRS3107D birth: 2/8/16 reg #: S710216
 SRS YUMA 072Y DJF WHISKEY RIVER 9006W
SRS BOND 0838B SRS RUSSETT 0305N
 SRS FINICKY 0838U CRO SURVEY 615S
 SRS WDA 270W SRS FINICKY 9809H
SRS COLUMBIA 3107A S A V 004 DENSITY 4336
 SRS COLUMBIA 1108 Y SRS FOOTLOOSE 9927J
 SRS WYATT EARP 965W
 SRS COLUMBIA 0530R

| Birth Weight | 205 Weight | Wean Ratio | American Salers EPDs | | | | |
|-------------------|------------|------------------|----------------------|-----|-----------------------------|-----|------|
| | | | BW | WW | YW | MWW | Milk |
| 78 | 647 | 93 | -0.5 | +40 | +80 | +40 | +20 |
| Sire Avg Birth Wt | | Dam Avg Birth Wt | Dam Wean Production | | SCURRED 87.50% BLACK | | |
| 9@87 | | 2@85 | 2@93 | | | | |

- A moderate, thick made bull with a light BW
- Dam is a moderate beautifully designed young cow
- Heifer Bull Potential

Integrity

Our ranch is located in the high desert of northern Nevada. The climate here is sometimes difficult for cattle to adapt to, snowy sometimes cold winters to hot and dusty summers. We are very fortunate to have been buying bulls from Skinner Ranch since 1990 as the Optimizer and Salers genetics fit very well.

The Salers' maternal influence in their herd, has helped us create a herd of cows that doesn't require a lot of babysitting. They are able to calve on their own, mother, and raise their calves with minimal help from us. Cows get out and travel to feed and water, whether on sparse lower elevation pastures or in steep mountainous summer country.

In addition, Ron has been so helpful sharing his knowledge of cattle and herd health issues and that has been a tremendous asset to us. The last several years, Tim and Kim have been delivering bulls and are more than helpful keeping us informed about their bulls and breeding program. The integrity of the Skinner family is second to none.

Jay & Glynis Wright • Tuscarora, NV





REFERENCE
SIRE

SRS Big League 0829B



REFERENCE
SIRE

SRS Crimson Tide 0744Z

138 SRS BIG LEAGUE 1103D

SALERS BULL tattoo: SRS1103D birth: 2/11/16 reg #: P710208

PRK YES 943Y
SRS BIG LEAGUE 0829B
 SRS JULIET 0829U
 CMC MR JAMACA M44K
SRS JULIET 1103Y
 SRS JULIET 0584R
 MAC WELLSVILLE 400W
 PRK GINA 943W
 CRO SURVEY 615S
 SRS JULIET 0522R
 PRK JAMAICA 9702J
 CMC MISS STAR K44G
 MAC LANSING 302L
 SRS JULIET 9609F

| Birth Weight | 205 Weight | Wean Ratio | American Salers EPDs | | | | |
|-------------------|------------|------------------|----------------------|---------------------|------|----------------------------|------|
| | | | BW | WW | YW | MWW | Milk |
| 97 | 718 | 104 | +3.8 | +65 | +113 | +55 | +22 |
| Sire Avg Birth Wt | | Dam Avg Birth Wt | | Dam Wean Production | | POLLED PUREBRED RED | |
| 4@92 | | 4@88 | | 4@99 | | | |

- Big League was the highest performing purebred we have sold
- The dam is a well-designed Survey daughter that has explosive performance and excellent numbers
- This excellent-uddered, phenomenal footed donor produces calves at the top every year
- Lot 138 is deep-sided and thick with lots of stretch

139 SRS BIG LEAGUE 1195D

SALERS BULL tattoo: SRS1195D birth: 2/8/16 reg #: P710206

PRK YES 943Y
SRS BIG LEAGUE 0829B
 SRS JULIET 0829U
 SRS WDA 270W
SRS RAINBIRD 1195 Y
 SRS RAINBIRD 0744T
 MAC WELLSVILLE 400W
 PRK GINA 943W
 CRO SURVEY 615S
 SRS JULIET 0522R
 S A V 004 DENSITY 433E
 SRS FOOTLOOSE 9927J
 SRS NETWORK 0014N
 SRS RAINBIRD 9531E

| Birth Weight | 205 Weight | Wean Ratio | American Salers EPDs | | | | |
|-------------------|------------|------------------|----------------------|---------------------|-----|----------------------------|------|
| | | | BW | WW | YW | MWW | Milk |
| 84 | 691 | 100 | +0.7 | +54 | +97 | +48 | +21 |
| Sire Avg Birth Wt | | Dam Avg Birth Wt | | Dam Wean Production | | POLLED 87.50% BLACK | |
| 4@92 | | 4@80 | | 4@93 | | | |

- A nice patterned bull out of a full sister to Crimson Tide

140 SRS CRIMSON TIDE 3106D

SALERS BULL tattoo: SRS3106D birth: 2/8/16 reg #: P710135

SRS WDA 270W
SRS CRIMSON TIDE 0744Z
 SRS RAINBIRD 0744T
 SRS XCITE 0845X
SRS MINNIE 3106A
 SRS MINNIE 1124 Y
 S A V 004 DENSITY 433E
 SRS FOOTLOOSE 9927J
 SRS NETWORK 0014N
 SRS RAINBIRD 9531E
 SRS TAHOE 0512T
 SRS HOMESTAKE 0845U
 SRS WINDFALL 335W
 SRS MINNIE 0271M

| Birth Weight | 205 Weight | Wean Ratio | American Salers EPDs | | | | |
|-------------------|------------|------------------|----------------------|---------------------|-----|--------------------------|------|
| | | | BW | WW | YW | MWW | Milk |
| 99 | 655 | 94 | +1.6 | +41 | +84 | +36 | +15 |
| Sire Avg Birth Wt | | Dam Avg Birth Wt | | Dam Wean Production | | POLLED 81.30% RED | |
| 33@84 | | 2@91 | | 2@94 | | | |

141 SRS BANNACK 0911D

SALERS BULL tattoo: SRS0911D birth: 2/10/16 reg #: P710267

KFI GOLD LABEL 89X
SRS BANNACK 7115B
 SRS RESOURCE 7115T
 SRS SAFE BET 9529S
SRS JULIET 0911W
 SRS JULIET 0584R
 H & S THRILLER
 KFI SABRINA 98S
 SRS PATENT 0221P
 SRS RESOURCE 0542R
 TSB PLD MARCUS 27N
 SRS CHARISMA 9529E
 MAC LANSING 302L
 SRS JULIET 9609F

| Birth Weight | 205 Weight | Wean Ratio | American Salers EPDs | | | | |
|-------------------|------------|------------------|----------------------|---------------------|-----|----------------------------|------|
| | | | BW | WW | YW | MWW | Milk |
| 90 | 694 | 100 | +0.5 | +41 | +78 | +40 | +19 |
| Sire Avg Birth Wt | | Dam Avg Birth Wt | | Dam Wean Production | | POLLED 87.50% BLACK | |
| 1@90 | | 6@83 | | 6@100 | | | |

Herd Improvement

We purchased the ranch we are on now in 1989 and moved our family from Glendive, MT, where Joe's family has ranched for 60+ years. Our cattle graze the plains of Eastern Montana. We began purchasing SRS bulls in 2007. We like the disposition of the bulls and they continue to help improve our herd. We try to purchase moderately sized bulls with thickness and length overall; they travel well to cover our cows. Last fall all of our steer calves were the heaviest we have ever had with a 637# average. That is with an end of March calving date, no creep feed, and a dry spring and summer. They were sold on October 24, and put on feed for 80 days. They had an average daily rate of gain of 3.3#. We are pretty proud of our operation; thank you to SRS for raising such quality outstanding bulls and standing behind them.

Your friends,
 Joe and Nadine Nemitz • Ismay, MT



Genomically Enhanced EPDs



Increased predictability and decreased risk for young and unproven animals due to enhanced accuracy of EPDs

Better characterization of genetics for difficult-to-measure performance traits (such as carcass traits, maternal traits and feed efficiency)

The ability to make more rapid progress for traits that are important to you, due to:

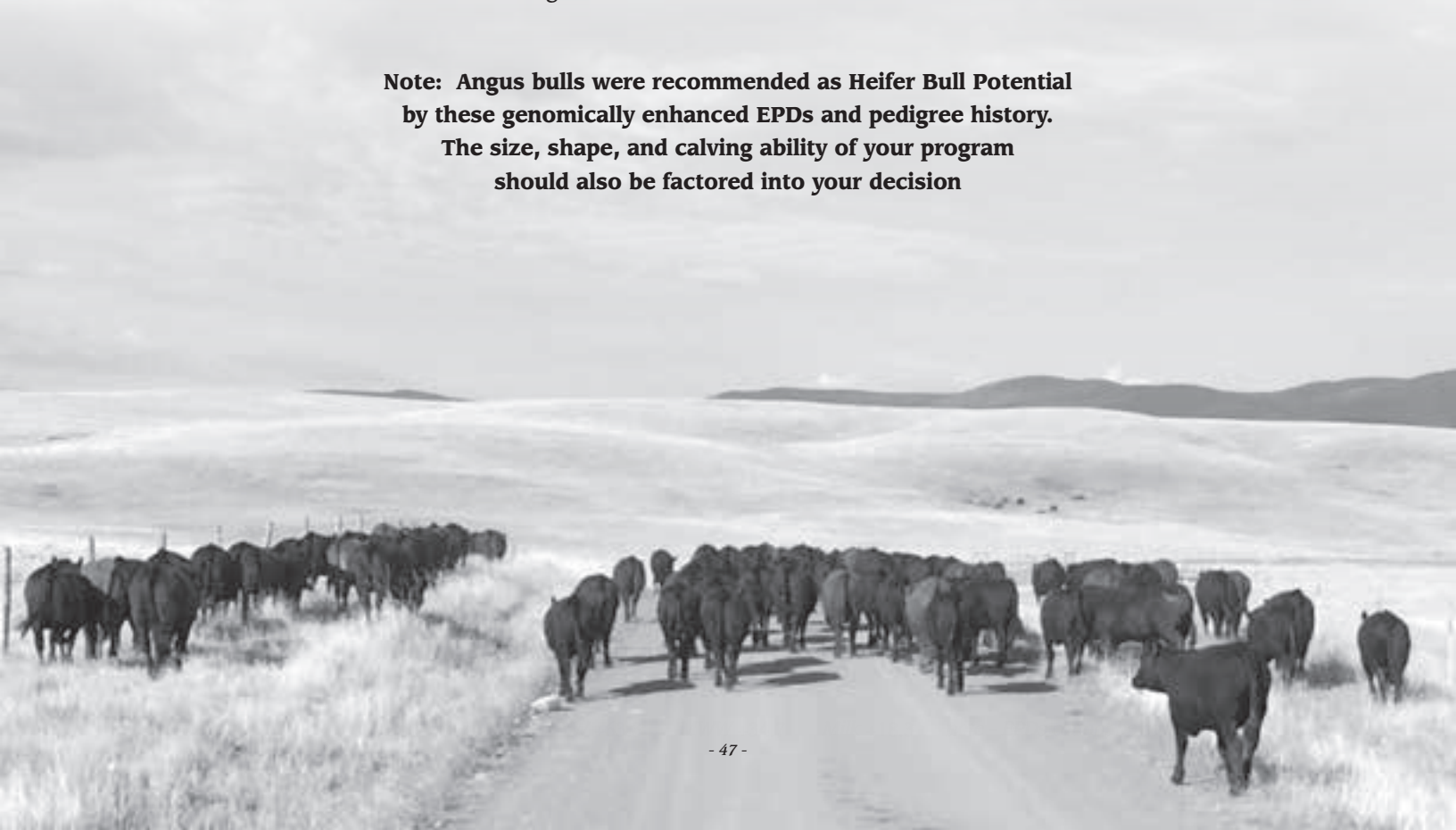
- more accurate selection
- easier identification of genetic outliers
- the ability to propagate young animals with confidence earlier in their lives

In fact, GE-EPDs on unproven animals have the same amount of accuracy as if they had recorded 8-20 calves, depending on the trait. That's valuable insight, offered regularly through the breed's weekly national cattle evaluation.

| Trait | Progeny Equivalent | Trait | Progeny Equivalent |
|---------------------|--------------------|------------------|--------------------|
| Calving Ease Direct | 21 | Docility | 12 |
| Birth Weight | 13 | Heifer Pregnancy | 10 |
| Weaning Weight | 19 | Mature Weight | 13 |
| Yearling Weight | 22 | Carcass Weight | 10 |
| Milk | 14 | Carcass Marbling | 9 |
| Yearling Height | 11 | Carcass Rib | 11 |
| Yearling Scrotal | 14 | Carcass Fat | 12 |
| Dry Matter Intake | 18 | | |

All Angus bulls in the sale have been i50K tested.

Note: Angus bulls were recommended as Heifer Bull Potential by these genomically enhanced EPDs and pedigree history. The size, shape, and calving ability of your program should also be factored into your decision





What it takes to be an SRS donor

We have been utilizing embryo transfer for many years to increase the numbers and quality of cattle for our customers. So what do we look for in a donor? There is a long list of hurdles that she must first get over. First, we pick older proven females; we would like to have at least four to five calves out of a cow before we start flushing her. This gives us the ability to make sure she has the performance and predictability that is essential. We typically will pick females that have high ratios on all of their calves, but we will use some cattle that are closer to a hundred, if they have consistently raised light birth weight calves.

Obviously, the next thing is phenotype; at Skinner Ranch we have a very specific phenotype that we look for and that cow simply has to fit that "mold". We don't care what breeding, or breed she is; we are looking for a long cow with thickness, fleshing ability, good feet, and a good disposition. We also are very critical on udders. We select females that have balanced udders with flat bottoms, good teat placement, and small teats. Overall, we want to pick out females and build cattle with balance, we will not sacrifice udder quality for a high IMF ratio, or give up good feet for performance. We will always breed sound, functional cattle that are labor efficient so that our genetics work for you and you don't work for them.

The idea is to proliferate top cattle; by making sure we use cattle with many of the aforementioned traits, therefore we don't have to worry about culling out a bunch of cattle for bad udders, or bad feet down the road. This gives you confidence that these bulls will work for you. Not every mating goes as planned; you still have to pick out sires that you believe will enhance and continue these traits. We spend countless hours on the road and researching different herd sire potentials, we like to see bulls' mothers, their offspring and how they are doing in different herds across the northwest. We talk to different breeders, breed representatives, and people that see different herds on a regular basis to get an idea of what cattle may fit our "mold."

Donors in our program are both raised and bought. The cows we buy are cows with proven production in another herd. They are then brought here to prove themselves in our program. Our experience with these hand-picked, proven cows is that a little under 50% will actually make our donor program.

Flushing a young unproven female with big EPDs without proving herself and her production is not sound genetic planning. Any person with a calculator and computer can breed for numbers. We select and breed for balanced, functional cattle that work in the "real world". "Real world" cattle must be able to climb a mountain and travel lots of miles for forage, while bringing home a big calf and breeding back.

This is our passion and while it can be extremely frustrating it can also be very rewarding when you can put a top set of cattle together for the sale and feel good about offering them to the public. You can expect us to continue to seek out genetics that will move us forward and keep on the forefront of the industry so that you can buy cattle here that will move you forward with confidence.



| Angus | | | |
|-------|---------|-----|---------|
| Lot | Herd ID | Lot | Herd ID |
| 1 | 3205 | 26 | 8140 |
| 2 | 1244 | 27 | 848 |
| 3 | 2295 | 28 | 8129 |
| 4 | 3227 | 29 | 3215 |
| 5 | 0589 | 30 | 2230 |
| 6 | 2205 | 31 | 506 |
| 7 | 2240 | 32 | 2206 |
| 8 | 3239 | 33 | 8126 |
| 9 | 0130 | 34 | 1184 |
| 10 | 3236 | 35 | 1243 |
| 11 | 4226 | 36 | 4232 |
| 12 | 2228 | 37 | 2209 |
| 13 | 7136 | 38 | 8146 |
| 14 | 9136 | 39 | 938 |
| 15 | 1070 | 40 | 0467 |
| 16 | 0854 | 41 | 196 |
| 17 | 1063 | 42 | 0667 |
| 18 | 0910 | 43 | 7169 |
| 19 | 255 | 44 | 2238 |
| 20 | 8128 | 45 | 063 |
| 21 | 291 | 46 | 592 |
| 22 | 1017 | 47 | 4273 |
| 23 | 0671 | 48 | 7228 |
| 24 | 0661 | 49 | 4243 |
| 25 | 3222 | | |

| Optimizer | | | |
|-----------|---------|-----|---------|
| Lot | Herd ID | Lot | Herd ID |
| 74 | 4186 | 94 | 4150 |
| 75 | 270 | 95 | 1162 |
| 76 | 0996 | 96 | 2142 |
| 77 | 150 | 97 | 3166 |
| 78 | 3160 | 98 | 3149 |
| 79 | 673 | 99 | 1093 |
| 80 | 146 | 100 | 2137 |
| 81 | 4130 | 101 | 2165 |
| 82 | 4184 | 102 | 2118 |
| 83 | 4182 | 103 | 2193 |
| 84 | 226 | 104 | 1193 |
| 85 | 155 | 105 | 4148 |
| 86 | 661 | 106 | 3117 |
| 87 | 3100 | 107 | 2107 |
| 88 | 3113 | 108 | 0984 |
| 89 | 0933 | 109 | 2138 |
| 90 | 0938 | 110 | 0650 |
| 91 | 3162 | 111 | 0862 |
| 92 | 4154 | 112 | 4137 |
| 93 | 3173 | 113 | 3168 |
| | | 114 | 4132 |

| Salers | |
|--------|---------|
| Lot | Herd ID |
| 135 | 1105 |
| 136 | 0509 |
| 137 | 3107 |
| 138 | 1103 |
| 139 | 1195 |
| 140 | 3106 |
| 141 | 0911 |



The Skinner Family



406/ 288-3872
skinnerranch@blackfoot.net
162 Farm to Market West
Hall, MT 59837

Presorted
FIRST CLASS
US Postage
Paid
Ballyhoo Printing
Hobson, MT



Friday • February 24, 2017

1:00 pm • At the Ranch • Hall, Montana



*Balancing traits for over three decades emphasizing
real-world cattle with these essential traits:*
good feet & legs, udder quality, tight sheath and good disposition



*Visit Our
Updated Website!*

www.SKINNERRANCH.com