

# JOCKO VALLEY CATTLE

## *Bull and Female Sale*

1:00 PM, Thursday, **APRIL 13, 2023** Missoula, MT  
*Five Valley Livestock Auction*

Selling 55 Yearling Angus Bulls,  
30 Registered Pairs and 20 Registered Yearling Open Heifers



# JOCKO VALLEY CATTLE

## *Bull and Female Sale*

1:00 PM, Thursday, **APRIL 13, 2023** Missoula, MT  
*Five Valley Livestock Auction*

### AUCTIONEER:

Greg Goggins 406-200-1880

### LIVESTOCK PUBLICATION REPRESENTATIVES:

Kurt Kangas, *Angus Journal* 406-366-4190  
John Goggins, *Western Ag Reporter* 406-698-4159  
Devin Murnin, *Western Livestock Journal* 406-696-1502

### SALE LOCATION:

8598 Robbins Road, Missoula, MT.  
Located at the junction of I-90 and Highway 93 at Exit 96.

### HERD HEALTH:

All cattle will be accompanied by proper health certificates for immediate shipment.

### TRUCKING:

Truckers believed to be reliable will be available to assist you in shipping your purchases.

### TERMS AND CONDITIONS:

Cattle will sell under the suggested Terms and Conditions of the American Angus Association ([http://www.angus.org/Pub/suggested\\_sale\\_terms.pdf](http://www.angus.org/Pub/suggested_sale_terms.pdf)).

### SUPPLEMENTAL INFORMATION:

A supplemental sheet will be available sale day with complete and up-to-date information. Announcements from the auction block take precedence over sale book information.

### FOOD AND REFRESHMENTS:

Will be available sale day.

### ACCOMMODATIONS:

Best Western Grant Crk. Inn 406-543-0700  
Motel 6 406-549-6665  
Rubys Inn 406-541-7829  
Super 8 Motel 406-549-1199



Marvin Rehbein, Owner  
323526 McLeod Road  
Arlee, MT 59821  
Home 406-726-3839  
Cell 406-546-4687  
[jockovalleycattle@gmail.com](mailto:jockovalleycattle@gmail.com)

**ANGUSMEDIA** EPDs contained in the hard copy of this sale book were current as of print date. Digital versions of this sale book can be viewed online at [www.angus.org](http://www.angus.org) and will have EPDs updated every Friday with the exception of EPD references in footnotes and photos. Any PDF downloads from the website will contain EPDs current as of the date downloaded. References: American Angus Association®, AHIR®, AngusLink<sup>SM</sup>, CAB®, Pathfinder®.







## Bid through Northern Livestock Video Auction's Online Bidding Platform

DESKTOP AND MOBILE FRIENDLY

### FOR THE DESKTOP:

1. It is best to use the Google Chrome web browser.
2. Pre-Register at least one day prior to the sale.
3. Go to [bid.northernlivestockvideo.com](http://bid.northernlivestockvideo.com) and click "Get Approved to Bid".
4. Doing this will prompt you to create an account, after which you will fill out a bidder approval application.
5. Once Approved, an email will be sent to the email account provided. Please click the link in that email to activate your account and a buyer number will be provided.
6. On sale day (after approval), visit [www.northernlivestockvideo.com](http://www.northernlivestockvideo.com) to view and bid!

### FOR THE MOBILE:

Use your mobile device to download the Northern App and follow the above steps to get approved.

There is an instructional video on how to register to bid on our website, [www.northernlivestockvideo.com](http://www.northernlivestockvideo.com) if you have any questions.

For technical assistance with Internet Viewing and Bidding Questions, call Sam Fraser 406-860-0590.

### PHONE BIDDING:

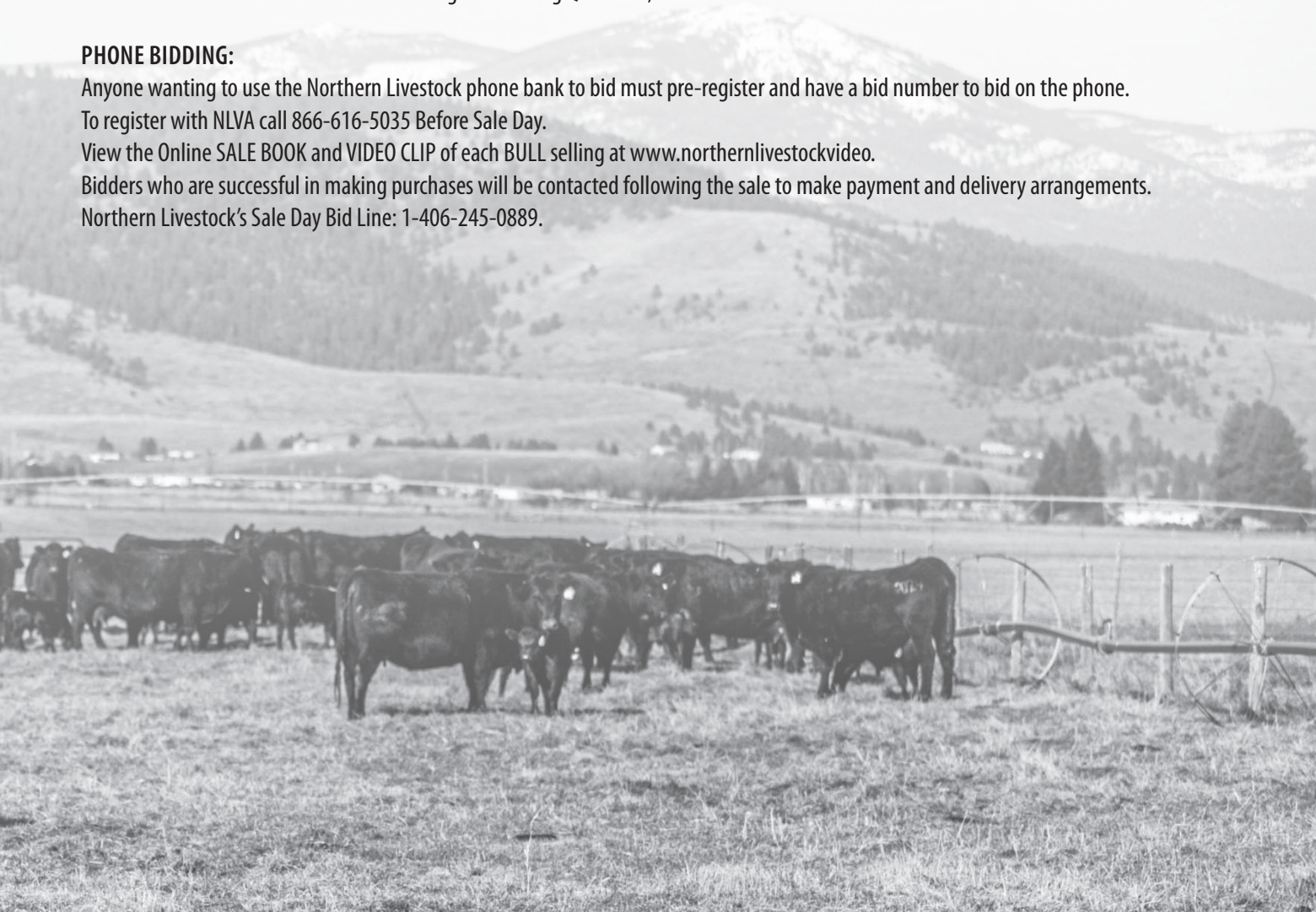
Anyone wanting to use the Northern Livestock phone bank to bid must pre-register and have a bid number to bid on the phone.

To register with NLVA call 866-616-5035 Before Sale Day.

View the Online SALE BOOK and VIDEO CLIP of each BULL selling at [www.northernlivestockvideo.com](http://www.northernlivestockvideo.com).

Bidders who are successful in making purchases will be contacted following the sale to make payment and delivery arrangements.

Northern Livestock's Sale Day Bid Line: 1-406-245-0889.





JVC Spur 225 - Lot 1

# 1 JVC Spur 225

BD: 01-17-2022 | BULL \*20333789 | TATTOO: 225

#\*Connealy Spur  
**Vermilion Spur E870**  
 19053226 Vermilion Lass 4942

#\*JVC Cavalry V3326  
**+\*JVC Countess C43**  
 18308143 +\*Buford Countess V9112

#\*Connealy Stimulus 8419  
 #Jazza of Conanga 8594  
 #Connealy Dublin 8223  
 Vermilion Lass 9795  
 #\*Connealy Cavalry 1149  
 +Brusett Forever W857  
 #S A F Focus of E R  
 Mytty Countess 906

BW
65
WW Ratio
YW Ratio

CED	BEPD	WEPD	YEPD	MILK	MARB	RE	\$M	\$W	\$B	\$C
+13	-.3	+78	+144	+26	+.37	+.57	+73	+72	+145	+261

# 4 JVC Cavalry 215

BD: 12-31-2021 | BULL 20617106 | TATTOO: 215

#\*JVC Cavalry V3326  
**+\*JVC Cavalry G49**  
 19714206 +\*RB Lady Regis 02-3213

#\*TC Franklin 619  
**+\*JVC Rita A349**  
 17613753 +\*B B R Rita 9003

#\*Connealy Cavalry 1149  
 +Brusett Forever W857  
 #\*Coleman Regis 904  
 +\*R B Lady Standard 305-02  
 #TC Total 410  
 #TC Marcia 1069  
 #+G A R New Design 5050  
 +\*S V F Rita T034

BW
68
WW Ratio
YW Ratio

CED	BEPD	WEPD	YEPD	MILK	MARB	RE	\$M	\$W	\$B	\$C
+10	+.3	+70	+120	+24	+.64	+.48	+54	+62	+157	+258



JVC Growth Fund K22 - Lot 5

# 5 JVC Growth Fund K22

BD: 12-08-2021 | BULL +\*20616610 | TATTOO: K22

#\*Basin Payweight 1682  
**+\*Deer Valley Growth Fund**  
 18827828 +\*Deer Valley Rita 36113

#\*SF Speedway A187  
**OCC Lucy 660**  
 18858106 OCC Lucy 409

#\*Basin Payweight 006S  
 21AR O Lass 7017  
 #\*Plattmere Weigh Up K360  
 +Deer Valley Rita 9457  
 #G A R Objective 7125  
 +SF Tiara X151  
 #\*Connealy Consensus 7229  
 +OCC Lucy 832

BW
87
WW Ratio
YW Ratio

CED	BEPD	WEPD	YEPD	MILK	MARB	RE	\$M	\$W	\$B	\$C
+7	+1.2	+87	+143	+38	+.66	+.67	+90	+98	+157	+294

# 2 JVC Spur 210

BD: 12-28-2021 | BULL \*20333786 | TATTOO: 210

#\*Connealy Spur  
**Vermilion Spur E870**  
 19053226 Vermilion Lass 4942

\*Connealy Top Game 820A  
**Vermilion Lass 7182**  
 18837942 Vermilion Lass 0307

#\*Connealy Stimulus 8419  
 #Jazza of Conanga 8594  
 #Connealy Dublin 8223  
 Vermilion Lass 9795  
 #\*Sitz Top Game 561X  
 #Roya of Conanga 820A  
 #+\*TC Franklin 619  
 Vermilion Lass 6198

BW
95
WW Ratio
100
YW Ratio

CED	BEPD	WEPD	YEPD	MILK	MARB	RE	\$M	\$W	\$B	\$C
+10	-.2	+64	+111	+19	+.29	+.46	+64	+57	+123	+224

# 3 JVC/PAR Edge 39J

BD: 12-30-2021 | BULL +\*20303826 | TATTOO: 39J

\*Prairie Pride Premium 407  
**\*Hilltop Edge 3747**  
 18882375 #Hilltop Cinderella 39

#+\*Basin Payweight 1682  
**+\*JVC New Design E105**  
 19186946 +Goode 5050 New Design 0304

#\*Plattmere Weigh Up K360  
 L A Polly 827  
 #Hilltop Fergus 0303  
 Hilltop Cinderella 194  
 #+\*Basin Payweight 006S  
 21AR O Lass 7017  
 #+G A R New Design 5050  
 +Goode Objective 8404

BW
65
WW Ratio
100
YW Ratio

CED	BEPD	WEPD	YEPD	MILK	MARB	RE	\$M	\$W	\$B	\$C
+13	+0	+72	+129	+33	+1.03	+.44	+92	+79	+162	+302

# 6 JVC Spur 237

BD: 02-09-2022 | BULL 20379101 | TATTOO: 237

#\*Connealy Spur  
**Vermilion Spur E870**  
 19053226 Vermilion Lass 4942

#\*C C A Uno 049  
**JVC Everelda Entense 367**  
 17765948 Coleman Everelda Entense 916

#\*Connealy Stimulus 8419  
 #Jazza of Conanga 8594  
 #Connealy Dublin 8223  
 Vermilion Lass 9795  
 #\*Sitz Upward 307R  
 Mytty Countess 906  
 #\*S A V Final Answer 0035  
 +Coleman Everelda Entense 704

BW
76
WW Ratio
YW Ratio

CED	BEPD	WEPD	YEPD	MILK	MARB	RE	\$M	\$W	\$B	\$C
+7	+1.4	+69	+123	+21	1+.32	1+.57	+71	+57	+137	+249



# 7 JVC Tiger 2081

BD: 05-15-2020 | BULL 19951607 | TATTOO: 2081

*T/D Tiger 8106 19142087	*Spring Cove TL Cat D13 #JVC Lady 648	#*Basin Bonus 4345 TL Ruby 4143 #*JVC Cavalry V3326 +Coleman Lady 366 #*Sitz Upward 307R Mytty Countess 906 #*S A V Final Answer 0035 +*Coleman Donna 203	<table border="1"> <tr><td>BW</td></tr> <tr><td>66</td></tr> <tr><td>WW Ratio</td></tr> <tr><td>100</td></tr> <tr><td>YW Ratio</td></tr> <tr><td>100</td></tr> </table>	BW	66	WW Ratio	100	YW Ratio	100
BW									
66									
WW Ratio									
100									
YW Ratio									
100									

CED	BEPD	WEPD	YEPD	MILK	MARB	RE	\$M	\$W	\$B	\$C
+12	-.6	+58	+103	+29			+75	+58		

# 10 JVC/PAR Enhance 24J

BD: 12-12-2021 | BULL +\*20291398 | TATTOO: 24J

SydGen Enhance 18170041	#*SydGen Exceed 3223 SydGen Rita 2618	+*SydGen Googol +*SydGen Forever Lady 1255 #*SydGen Liberty GA 8627 #Fox Run Rita 9308 #*Connealy Onward *Sitz Henrietta Pride 81M #Bon View New Design 1407 Plattemere Rosa 324	<table border="1"> <tr><td>BW</td></tr> <tr><td>76</td></tr> <tr><td>WW Ratio</td></tr> <tr><td>100</td></tr> <tr><td>YW Ratio</td></tr> <tr><td>100</td></tr> </table>	BW	76	WW Ratio	100	YW Ratio	100
BW									
76									
WW Ratio									
100									
YW Ratio									
100									

CED	BEPD	WEPD	YEPD	MILK	MARB	RE	\$M	\$W	\$B	\$C
+9	+0	+68	+124	+41	+1.02	+.96	+88	+79	+168	+306

# 11 JVC/PAR Iconic 2K

BD: 01-02-2022 | BULL +\*20300789 | TATTOO: 2K

*DB Iconic G95 19611994	*Musgrave 316 Stunner *DB Ms Discovery D13	#+*LD Capitalist 316 #MCATL Blackbird 831-1378 #*V A R Discovery 2240 DB Ms Final Tool 4120 #*EF Commando 1366 *Baldridge Isabel Y69 #*Bruns Top Cut 373 #*Erica of Ellston M38	<table border="1"> <tr><td>BW</td></tr> <tr><td>63</td></tr> <tr><td>WW Ratio</td></tr> <tr><td>100</td></tr> <tr><td>YW Ratio</td></tr> <tr><td>100</td></tr> </table>	BW	63	WW Ratio	100	YW Ratio	100
BW									
63									
WW Ratio									
100									
YW Ratio									
100									

CED	BEPD	WEPD	YEPD	MILK	MARB	RE	\$M	\$W	\$B	\$C
+12	-2.0	+77	+132	+36	+.78	+.57	+73	+87	+136	+249



JVC Tiger 23 - Lot 8

# 8 JVC Tiger 23 [MIP]

BD: 12-06-2021 | BULL 20333783 | TATTOO: 23

*T/D Tiger 8106 19142087	*Spring Cove TL Cat D13 #JVC Lady 648	#*Basin Bonus 4345 TL Ruby 4143 #*JVC Cavalry V3326 +Coleman Lady 366 #*HA Cowboy Up 5405 OCC Montana Dream 809 #*Mitty In Focus OCC Montana Dream 404	<table border="1"> <tr><td>BW</td></tr> <tr><td>72</td></tr> <tr><td>WW Ratio</td></tr> <tr><td>100</td></tr> <tr><td>YW Ratio</td></tr> <tr><td>100</td></tr> </table>	BW	72	WW Ratio	100	YW Ratio	100
BW									
72									
WW Ratio									
100									
YW Ratio									
100									

CED	BEPD	WEPD	YEPD	MILK	MARB	RE	\$M	\$W	\$B	\$C
+8	+1.8	+68	+119	+16	+.51	+.32	+61	+55	+116	+211

# 12 JVC/PAR Iconic K29

BD: 01-07-2022 | BULL +\*20300816 | TATTOO: K29

*DB Iconic G95 19611994	*Musgrave 316 Stunner *DB Ms Discovery D13	#+*LD Capitalist 316 #MCATL Blackbird 831-1378 #*V A R Discovery 2240 DB Ms Final Tool 4120 #*EF Commando 1366 *Baldridge Isabel Y69 #*Bruns Top Cut 373 #*Erica of Ellston M38	<table border="1"> <tr><td>BW</td></tr> <tr><td>77</td></tr> <tr><td>WW Ratio</td></tr> <tr><td>100</td></tr> <tr><td>YW Ratio</td></tr> <tr><td>100</td></tr> </table>	BW	77	WW Ratio	100	YW Ratio	100
BW									
77									
WW Ratio									
100									
YW Ratio									
100									

CED	BEPD	WEPD	YEPD	MILK	MARB	RE	\$M	\$W	\$B	\$C
+9	-.1	+87	+149	+32	+1.13	+.88	+76	+90	+179	+308

# 9 JVC/PAR Revolution 22J

BD: 12-10-2021 | BULL +\*20283462 | TATTOO: 22J

+*RAR Revolution 8148 19301062	SydGen Enhance +*Woodside Rita 6569 of 5F56	#*SydGen Exceed 3223 SydGen Rita 2618 #*V A R Discovery 2240 +*Rita 5F56 of 1198 FD #*Connealy Onward *Sitz Henrietta Pride 81M #Bon View New Design 1407 Plattemere Rosa 324	<table border="1"> <tr><td>BW</td></tr> <tr><td>82</td></tr> <tr><td>WW Ratio</td></tr> <tr><td>100</td></tr> <tr><td>YW Ratio</td></tr> <tr><td>100</td></tr> </table>	BW	82	WW Ratio	100	YW Ratio	100
BW									
82									
WW Ratio									
100									
YW Ratio									
100									

CED	BEPD	WEPD	YEPD	MILK	MARB	RE	\$M	\$W	\$B	\$C
+7	+2.2	+82	+148	+32	+.80	+.90	+75	+76	+164	+288

# 13 JVC Cavalry K215

BD: 02-16-2022 | BULL +\*20545653 | TATTOO: K215

#*JVC Cavalry V3326 17784803	#*Connealy Cavalry 1149 +Brusett Forever W857	#*Connealy Consensus +Brista of Conanga 927T #*TC Franklin 619 #Brusett Forever 827 #+*Basin Payweight 0065 21AR O Lass 7017 #+G A R New Design 5050 +Goode Objective 8404	<table border="1"> <tr><td>BW</td></tr> <tr><td>68</td></tr> <tr><td>WW Ratio</td></tr> <tr><td>100</td></tr> <tr><td>YW Ratio</td></tr> <tr><td>100</td></tr> </table>	BW	68	WW Ratio	100	YW Ratio	100
BW									
68									
WW Ratio									
100									
YW Ratio									
100									

CED	BEPD	WEPD	YEPD	MILK	MARB	RE	\$M	\$W	\$B	\$C
+11	-1.3	+75	+133	+31	+1.66	+1.52	+65	+77	+152	+262

# 14 JVC/PAR Enhance 19J

BD: 12-09-2021 | BULL +\*20291395 | TATTOO: 19J

#*SydGen Exceed 3223		+*SydGen Googol		
SydGen Enhance		+*SydGen Forever Lady 1255		
18170041	SydGen Rita 2618	#*SydGen Liberty GA 8627		BW
		#Fox Run Rita 9308		77
		#*Connealy Onward		WW Ratio
		#Sitz Upward 307R		100
*River Hills Rosa X374		#Sitz Henrietta Pride 81M		YW Ratio
16760271	#River Hills Rosa R300	#Bon View New Design 1407		
		Plattemere Rosa 324		

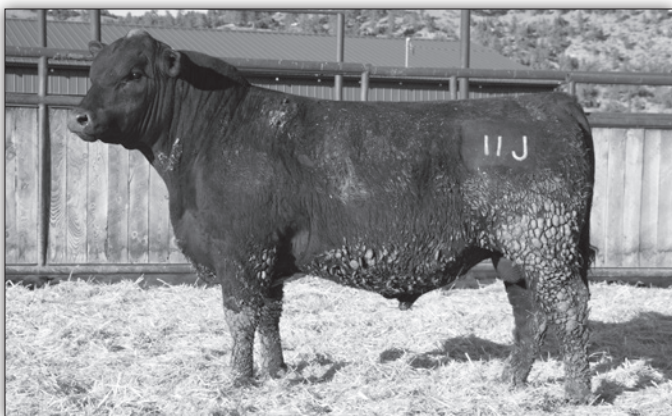
CED	BEPD	WEPD	YEPD	MILK	MARB	RE	\$M	\$W	\$B	\$C
+11	-2	+70	+128	+39	+.80	+1.06	+72	+79	+151	+268

# 17 JVC Goalkeeper 219

BD: 01-03-2022 | BULL \*20616471 | TATTOO: 219

SydGen Enhance		#*SydGen Exceed 3223		
*Baldridge SR Goalkeeper		SydGen Rita 2618		
19356243	+*Baldridge Isabel E030	#*Connealy Confidence Plus		BW
		#Baldridge Isabel Y69		95
		#*Sitz Upward 307R		WW Ratio
		#*JVC Upwards 307R 0128		
JVC Gammer 2215		+*V A R Rita 6132		YW Ratio
17466324	River Hills Gammer X239	#*SydGen C C & 7		
		River Hills Gammer S329		

CED	BEPD	WEPD	YEPD	MILK	MARB	RE	\$M	\$W	\$B	\$C
+1	+3.7	+82	+143	+40	+.92	+.86	+88	+80	+174	+314



JVC/PAR Enhance 11J - Lot 15

# 20 JVC Enhance 298

BD: 02-25-2022 | BULL 20333807 | TATTOO: 298

SydGen Enhance		#*SydGen Exceed 3223		
*Deppe GAF Enhance 0159		SydGen Rita 2618		
19824414	+*Deppe Bachel Beauty 5071	#+*PA Valor 201		BW
		Deppe 7229 Bachel Beauty 260		69
		#*A A R Ten X 7008 S A		WW Ratio
		#*V A R Discovery 2240		
JVC Miss 788		+*Deer Valley Rita 0308		YW Ratio
18755519	+*JVC Miss Y159	#*Sitz Upward 307R		
		#CAR Miss 055		

CED	BEPD	WEPD	YEPD	MILK	MARB	RE	\$M	\$W	\$B	\$C
+8	+1.2	+73	+135	+27	I+.77	I+.82	+63	+65	+170	+283

# 15 JVC/PAR Enhance 11J

BD: 12-05-2021 | BULL +\*20280141 | TATTOO: 11J

#*SydGen Exceed 3223		+*SydGen Googol		
SydGen Enhance		+*SydGen Forever Lady 1255		
18170041	SydGen Rita 2618	#*SydGen Liberty GA 8627		BW
		#Fox Run Rita 9308		90
		#*Connealy Onward		WW Ratio
		#Sitz Upward 307R		100
*River Hills Rosa X374		#Sitz Henrietta Pride 81M		YW Ratio
16760271	#River Hills Rosa R300	#Bon View New Design 1407		
		Plattemere Rosa 324		100

CED	BEPD	WEPD	YEPD	MILK	MARB	RE	\$M	\$W	\$B	\$C
+2	+2.1	+80	+152	+25	+.95	+.85	+69	+67	+175	+296

# 21 JVC Enhance 2001

BD: 02-27-2022 | BULL 20332862 | TATTOO: 2001

SydGen Enhance		#*SydGen Exceed 3223		
*Deppe GAF Enhance 0159		SydGen Rita 2618		
19824414	+*Deppe Bachel Beauty 5071	#+*PA Valor 201		BW
		Deppe 7229 Bachel Beauty 260		72
		#*Koupals B&B Identity		WW Ratio
		#*Musgrave Aviator		
+*JVC Donna E11		MCATL Forever Lady 1429-138		YW Ratio
18745826	+*Coleman Donna 1264	#*S A V Final Answer 0035		
		+*Coleman Donna 714		

CED	BEPD	WEPD	YEPD	MILK	MARB	RE	\$M	\$W	\$B	\$C
+12	-.4	+68	+125	+29	I+.57	I+.82	+82	+67	+149	+275

# 16 JVC Goalkeeper

BD: 12-29-2021 | BULL \*20555281 | TATTOO: 213

SydGen Enhance		#*SydGen Exceed 3223		
*Baldridge SR Goalkeeper		SydGen Rita 2618		
19356243	+*Baldridge Isabel E030	#*Connealy Confidence Plus		BW
		#Baldridge Isabel Y69		63
		#*Connealy Cavalry 1149		WW Ratio
		#*JVC Cavalry V3326		
+*JVC Barbara GS		+Brusett Forever W857		YW Ratio
19516589	+*Mill Coulee Barbara K 610	#+*R B Active Duty 010		
		#*Mill Coulee Barbara K 905		

CED	BEPD	WEPD	YEPD	MILK	MARB	RE	\$M	\$W	\$B	\$C
+6	+5	+82	+145	+23	+.43	+.94	+64	+70	+142	+248



### 31 JVC Cavalry 27

BD: 12-25-2021 | BULL 20617105 | TATTOO: 27

#\*JVC Cavalry V3326  
 #\*Connealy Cavalry 1149  
 +\*JVC Cavalry G49  
 +Brusett Forever W857  
 19714206 +\*RB Lady Regis 02-3213  
 #\*Coleman Regis 904  
 +\*R B Lady Standard 305-02  
 +Summitcrest Stardom 1554  
 #G T Shear Force  
 +JVC Forever Lady Y154  
 Summitcrest Princess ON70  
 17140281 +Boyd Forever Lady 7120  
 #A A R New Trend  
 S V F Forever Lady 57D

BW
83
WW Ratio
YW Ratio

CED	BEPD	WEPD	YEPD	MILK	MARB	RE	\$M	\$W	\$B	\$C
+11	-.8	+63	+114	+31	+.59	+.41	+59	+66	+147	+250



27J - Lot 22

### 22

BD: | | TATTOO:

BW
WW Ratio
YW Ratio

CED	BEPD	WEPD	YEPD	MILK	MARB	RE	\$M	\$W	\$B	\$C

### 32 JVC Enhance 277

BD: 02-24-2022 | BULL 20333804 | TATTOO: 277

SydGen Enhance  
 #\*SydGen Exceed 3223  
 \*Deppe GAF Enhance 0159  
 SydGen Rita 2618  
 19824414 +\*Deppe Bachel Beauty 5071  
 #+\*PA Valor 201  
 Deppe 7229 Bachel Beauty 260  
 #\*A A R Ten X 7008 S A  
 #\*V A R Discovery 2240  
 +\*Deer Valley Rita 0308  
 JVC Ideal 7012  
 18755515 JVC Ideal 942  
 +Ideal 443 of Shadow 4465 DGT  
 +Ideal 5640 of 4PT8 0478

BW
73
WW Ratio
YW Ratio

CED	BEPD	WEPD	YEPD	MILK	MARB	RE	\$M	\$W	\$B	\$C
+6	+1.3	+70	+129	+25			+74	+58		

### 23 JVC/PAR Protege' 29J

BD: 12-14-2021 | BULL +\*20301795 | TATTOO: 29J

#+\*Rito 112 of 2536 Rito 616  
 #Rito 616 of 4B20 6807  
 #+\*GAR-EGL Protege  
 G A R Precision 2536  
 15098880 L B 6807 Isabel 339  
 #D H D Traveler 6807  
 #L B E31 Isabel 168  
 #\*Sitz Upward 307R  
 #\*Connealy Onward  
 \*River Hills Rosa X374  
 \*Sitz Henrietta Pride 81M  
 16760271 #River Hills Rosa R300  
 #Bon View New Design 1407  
 Plattemere Rosa 324

BW
88
WW Ratio
100
YW Ratio
100

CED	BEPD	WEPD	YEPD	MILK	MARB	RE	\$M	\$W	\$B	\$C
+8	+1.5	+85	+135	+26	+.93	+.96	+72	+84	+174	+298



K210 - Lot 33

### 24 JVC/PAR Infocus 30J

BD: 12-16-2021 | BULL +\*20307781 | TATTOO: 30J

#\*Mytty In Focus  
 #5 A F Focus of E R  
 #\*Connealy In Focus 4925  
 Mytty Countess 906  
 15491720 Black Cana of Conanga 206  
 #Millers Bullseye J373  
 Black Cryse of Conanga 204  
 +\*G A R Progression  
 #\*G A R Predestined  
 \*SS Blackcap Y3296  
 \*G A R Objective 2345  
 17011705 +Bohi Blackcap 3296  
 #C A Future Direction 5321  
 B/R Blackcap Empress 558

BW
85
WW Ratio
100
YW Ratio
100

CED	BEPD	WEPD	YEPD	MILK	MARB	RE	\$M	\$W	\$B	\$C
+1	+1.6	+66	+107	+22	+.86	+.33	+57	+58	+141	+240

### 33 Commercial

COMMERCIAL BULL | TATTOO: K210

### 34 JVC Spur 216 [CAF]

BD: 12-31-2021 | BULL 20350530 | TATTOO: 216

**Vermilion Spur E870**  
19053226  
#Connealy Spur  
Vermilion Lass 4942

**BT Ruby 15P**  
14865836  
#Summitcrest High Prime 0H29  
#BT Ruby 625M

#Connealy Stimulus 8419  
#Jazza of Conanga 8594  
#Connealy Dublin 8223  
Vermilion Lass 9795  
#Gardens Prime Time  
Summitcrest Missie 2F55  
Sitz Alliance 8199  
BT Ruby 46J

BW
83
WW Ratio
YW Ratio

CED	BEPD	WEPD	YEPD	MILK	MARB	RE	\$M	\$W	\$B	\$C
+4	+1.6	+50	+82	+21	+12	-.05	+60	+47	+95	+183

### 38 JVC Spur K234

BD: 02-22-2022 | BULL +\*20612777 | TATTOO: K234

**Vermilion Spur E870**  
19053226  
#Connealy Spur  
Vermilion Lass 4942

**OCC Lucy 660**  
18858106  
#+\*SF Speedway A187  
OCC Lucy 409

#Connealy Stimulus 8419  
#Jazza of Conanga 8594  
#Connealy Dublin 8223  
Vermilion Lass 9795  
#G A R Objective 7125  
+SF Tiara X151  
#Connealy Consensus 7229  
+OCC Lucy 832

BW
78
WW Ratio
YW Ratio

CED	BEPD	WEPD	YEPD	MILK	MARB	RE	\$M	\$W	\$B	\$C
I+3	I+2.3	I+78	I+134	I+26	I+.75	I+.62	+70	+74	+166	+285

### 35 JVC Miss Wix 231

BD: 02-02-2022 | BULL 20379100 | TATTOO: 231

**Vermilion Spur E870**  
19053226  
#Connealy Spur  
Vermilion Lass 4942

**#ICC Reece's Miss Wix 057**  
16815967  
#S A V Bismarck 5682  
Reece's Miss Wix 5391

#Connealy Stimulus 8419  
#Jazza of Conanga 8594  
#Connealy Dublin 8223  
Vermilion Lass 9795  
#+\*G A R Grid Maker  
S A V Abigale 0451  
+Kahn Precision M117  
+NER ICC Miss Wix 9166

BW
90
WW Ratio
YW Ratio

CED	BEPD	WEPD	YEPD	MILK	MARB	RE	\$M	\$W	\$B	\$C
-4	+5.2	+73	+120	+21	I+.31	I+.56	+74	+52	+140	+256

### 39 JVC Bragging Rights K241

BD: 02-24-2022 | BULL +\*20612778 | TATTOO: K241

**+\*44 Bragging Rights 4372**  
17894794  
#V A R Discovery 2240  
+\*44 Ruby 2357

**+\*RB Lady Regis 02-3213**  
17831915  
#A A R Ten X 7008 S A  
+\*Deer Valley Rita 0308  
#Connealy Capitalist 028  
+\*44 Ruby X110  
#S A V Final Answer 0035  
+\*Coleman Donna 714  
#\*LCC New Standard  
+\*B A Lady 6807 305

BW
62
WW Ratio
YW Ratio

CED	BEPD	WEPD	YEPD	MILK	MARB	RE	\$M	\$W	\$B	\$C
I+11	I-.3	I+70	I+121	I+16	I+.86	I+.79	+60	+60	+167	+277

### 36 JVC Spur 2020

BD: 03-02-2022 | BULL 20612870 | TATTOO: 2020

**Vermilion Spur E870**  
19053226  
#Connealy Spur  
Vermilion Lass 4942

**Vermilion BC Erica 4020**  
17842908  
#Connealy Spur  
Vermilion MS Erica 2059

#Connealy Stimulus 8419  
#Jazza of Conanga 8594  
#Connealy Dublin 8223  
Vermilion Lass 9795  
#Connealy Stimulus 8419  
#Jazza of Conanga 8594  
#Sinclair Boss  
Vermilion MS Erica 0234

BW
WW Ratio
YW Ratio

CED	BEPD	WEPD	YEPD	MILK	MARB	RE	\$M	\$W	\$B	\$C

### 40 JVC Bronc K28

BD: 01-06-2022 | BULL +\*20619524 | TATTOO: K28

**+\*Baldridge Bronc**  
18229425  
#EF Commando 1366  
\*Baldridge Isabel Y69

**+\*Buford Countess V9112**  
16539150  
#S A F Focus of E R  
Mytty Countess 906

#EF Complement 8088  
Riverbend Young Lucy W1470  
#\*Styles Upgrade J59  
+Baldridge Isabel T935  
#S A F Fame  
G D A R Forever Lady 246  
#Sitz Alliance 6595  
Baldridge Countess 357

BW
71
WW Ratio
100
YW Ratio

CED	BEPD	WEPD	YEPD	MILK	MARB	RE	\$M	\$W	\$B	\$C
+8	+0	+62	+100	+28	+.22	+.50	+80	+68	+99	+208

### 37 JVC/PAR Enhance 7J

BD: 12-04-2021 | BULL +\*20280140 | TATTOO: 7J

**SydGen Enhance**  
18170041  
#SydGen Exceed 3223  
SydGen Rita 2618

**\*River Hills Rosa X374**  
16760271  
#Sitz Upward 307R  
#River Hills Rosa R300

+\*SydGen Googol  
+\*SydGen Forever Lady 1255  
#\*SydGen Liberty GA 8627  
#Fox Run Rita 9308  
#\*Connealy Onward  
#Sitz Henrietta Pride 81M  
#Bon View New Design 1407  
Plattemere Rosa 324

BW
80
WW Ratio
100
YW Ratio
100

CED	BEPD	WEPD	YEPD	MILK	MARB	RE	\$M	\$W	\$B	\$C
+8	+4	+77	+144	+36	+.95	+.91	+71	+79	+164	+284

### 41 JVC Cavalry 214

BD: 12-30-2021 | BULL 20617107 | TATTOO: 214

**+\*JVC Cavalry G49**  
19714206  
#JVC Cavalry V3326  
+\*RB Lady Regis 02-3213

**JVC Pride 368**  
18023428  
#+\*C C A Uno 049  
JVC Pride 744 934

#Connealy Cavalry 1149  
+Brusett Forever W857  
#\*Coleman Regis 904  
+\*R B Lady Standard 305-02  
#\*Sitz Upward 307R  
Mytty Countess 906  
+Summitcrest Stardom 1554  
JVC Focus Pride 744

BW
75
WW Ratio
YW Ratio

CED	BEPD	WEPD	YEPD	MILK	MARB	RE	\$M	\$W	\$B	\$C
+14	-2.5	+60	+103	+25	+.60	+.30	+89	+67	+130	+258



# 42 JVC Tahoe 232

BD: 02-03-2022 | BULL \*20333792 | TATTOO: 232

\*Tehama Upward Y238  
 #+\*Tehama Tahoe B767  
 17817177 +\*Tehama Mary Blackbird Y684  
 +\*Deer Valley Growth Fund  
**Krein Ebby Flora 048**  
 19894176 Krein Ebby Aurora 425

#\*Sitz Upward 307R  
 +\*Tehama Elite Blackbird T735  
 #\*S A V Final Answer 0035  
 Tehama Mary Blackbird T073  
 #+\*Basin Payweight 1682  
 +\*Deer Valley Rita 36113  
 #\*Mogck Bullseye  
 La Beth Ebby Lorraine 630

BW
88
WW Ratio
YW Ratio

CED	BEPD	WEPD	YEPD	MILK	MARB	RE	\$M	\$W	\$B	\$C
-1	+4.7	+89	+155	+34	I+.62	I+.89	+78	+75	+162	+288

# 46 Commercial

COMMERCIAL BULL | TATTOO: K211

# 43 JVC Spur 266

BD: 02-23-2022 | BULL 20379103 | TATTOO: 266

#\*Connealy Spur  
**Vermilion Spur E870**  
 19053226 Vermilion Lass 4942  
 #+\*PA Power Tool 9108  
**JVC Abigale 3340**  
 17921810 +\*JVC Abigale Y1118

#\*Connealy Stimulus 8419  
 #Jazza of Conanga 8594  
 #Connealy Dublin 8223  
 Vermilion Lass 9795  
 #\*G A R Predestined  
 \*Shamrocks Beebee Queen 3095  
 #\*Coleman Regis 904  
 +\*Coleman Abigale 9111

BW
71
WW Ratio
YW Ratio

CED	BEPD	WEPD	YEPD	MILK	MARB	RE	\$M	\$W	\$B	\$C
+9	+6	+63	+110	+23	I+.65	I+.46	+74	+57	+141	+257

# 47 JVC Edge K218

BD: 02-18-2022 | BULL +\*20612776 | TATTOO: K218

\*Prairie Pride Premium 407  
**#Hilltop Edge 3747**  
 18882375 #Hilltop Cinderella 39  
 #\*Hoover Dam  
 +\*JVC Blackcap GARY Y108  
 17142868 #+River Hills EXT Precsn R465

#\*Plattemere Weigh Up K360  
 L A Polly 827  
 #Hilltop Fergus 0303  
 Hilltop Cinderella 194  
 #\*SydGen C C & 7  
 #Erica of Ellston C124  
 #Bon View New Design 1407  
 +L C R Asbury Precision 124

BW
65
WW Ratio
YW Ratio

CED	BEPD	WEPD	YEPD	MILK	MARB	RE	\$M	\$W	\$B	\$C
I+8	I+.4	I+56	I+104	I+29	I+.85	I+.56	+57	+57	+159	+263

# 44 JVC Growth Fund 287

BD: 02-25-2022 | BULL 20332860 | TATTOO: 287

+\*Deer Valley Growth Fund  
 #\*Deppe GAF Growth Fund 0125  
 19822952 +\*Deppe 7229 Blackcap 244  
 #+\*Coleman Charlo 0256  
**JVC Ideal 802**  
 19202647 +\*JVC Ideal 3407 Y1112

+\*Basin Payweight 1682  
 +\*Deer Valley Rita 36113  
 #\*Connealy Consensus 7229  
 +\*Limestone Blackcap 5569  
 #\*O C C Paxton 730P  
 +Bohi Abigale 6014  
 #Rito 707 of Ideal 533 70  
 +Rito 707 of Ideal 3407 602

BW
80
WW Ratio
YW Ratio

CED	BEPD	WEPD	YEPD	MILK	MARB	RE	\$M	\$W	\$B	\$C
+4	+2.6	+69	+125	+29			+64	+58		

# 48 JVC Spur K260

BD: 02-28-2022 | BULL +\*20333813 | TATTOO: K260

#\*Connealy Spur  
**Vermilion Spur E870**  
 19053226 Vermilion Lass 4942  
 #+\*SF Speedway A187  
**OCC Lucy 660**  
 18858106 OCC Lucy 409

#\*Connealy Stimulus 8419  
 #Jazza of Conanga 8594  
 #Connealy Dublin 8223  
 Vermilion Lass 9795  
 #G A R Objective 7125  
 +SF Tiara X151  
 #\*Connealy Consensus 7229  
 +OCC Lucy 832

BW
75
WW Ratio
YW Ratio

CED	BEPD	WEPD	YEPD	MILK	MARB	RE	\$M	\$W	\$B	\$C
I+3	I+2.3	I+78	I+134	I+26	I+.75	I+.62	+70	+74	+166	+285

# 45 JVC Spur 2070

BD: 03-21-2022 | BULL 20612775 | TATTOO: 2070

#\*Connealy Spur  
**Vermilion Spur E870**  
 19053226 Vermilion Lass 4942  
 #\*Musgrave Aviator  
 +\*JVC Everelda Entense E69  
 18755493 +\*Coleman Everelda Entense 711

#\*Connealy Stimulus 8419  
 #Jazza of Conanga 8594  
 #Connealy Dublin 8223  
 Vermilion Lass 9795  
 #\*Koupals B&B Identity  
 MCATL Forever Lady 1429-138  
 +\*Wulffs Ext 6106  
 +BT Everelda Entense 613L

BW
90
WW Ratio
YW Ratio

CED	BEPD	WEPD	YEPD	MILK	MARB	RE	\$M	\$W	\$B	\$C
-1	+3.4	+69	+120	+20	I+.30	I+.59	+79	+52	+132	+250





K23 - Lot 49 (butt)



K23 - Lot 49 (side)

## 49 Commercial

COMMERCIAL BULL | TATTOO: K23

## 51 JVC Acclaim 240

BD: 02-13-2022 | BULL 20333794 | TATTOO: 240

\*Jindra 3rd Dimension  
 #\*Jindra Acclaim 17972810 +Jindra Blackbird Lassy 1111  
 Coleman Emblazon 687  
 Sandford MS Emblazon 932 16352705 Sandford Ms Emblazon 738  
 #\*Jindra Double Vision  
 Jindras Sapphire J 417  
 #\*Connealy Impression  
 Jindras Enchantress J 102  
 #+O C C Emblazon 854E  
 Coleman Blackbird 146  
 #+O C C Emblazon 854E  
 Sandfords Lucy 328

BW
71
WW Ratio
YW Ratio

CED	BEPD	WEPD	YEPD	MILK	MARB	RE	\$M	\$W	\$B	\$C
+8	+5	+48	+95	+24			+53	+40		

## 50 JVC Spur 282

BD: 02-24-2022 | BULL 20333805 | TATTOO: 282

#\*Connealy Spur  
 Vermilion Spur E870 19053226 Vermilion Lass 4942  
 #\*Baldridge Waylon W34  
 JVC Ethelda 433 18232791 River Hills Ethelda W327  
 #\*Connealy Stimulus 8419  
 #Jazza of Conanga 8594  
 #Connealy Dublin 8223  
 Vermilion Lass 9795  
 #+\*GAR-EGL Protege  
 \*Baldridge Blackcap T163  
 #Woodhill Mainline  
 River Hills Ethelda P4450

BW
63
WW Ratio
YW Ratio

CED	BEPD	WEPD	YEPD	MILK	MARB	RE	\$M	\$W	\$B	\$C
+5	+5	+69	+118	+9	I+56	I+.57	+39	+45	+151	+235

## 52 JVC Spur K268

BD: 03-03-2022 | BULL +20613575 | TATTOO: K268

#\*Connealy Spur  
 Vermilion Spur E870 19053226 Vermilion Lass 4942  
 #+\*SF Speedway A187  
 OCC Lucy 660 18858106 OCC Lucy 409  
 #\*Connealy Stimulus 8419  
 #Jazza of Conanga 8594  
 #Connealy Dublin 8223  
 Vermilion Lass 9795  
 #G A R Objective 7125  
 +SF Tiara X151  
 #\*Connealy Consensus 7229  
 +OCC Lucy 832

BW
72
WW Ratio
100
YW Ratio

CED	BEPD	WEPD	YEPD	MILK	MARB	RE	\$M	\$W	\$B	\$C
I+3	I+2.3	I+78	I+134	I+26	I+.75	I+.62	+70	+74	+166	+285

53

BD: | BULL PENDING | TATTOO: 2083

#\*JVC Cavalry V3326  
 #\*Connealy Cavalry 1149  
 +\*Bruseett Forever W857  
 #\*Coleman Regis 904  
 +\*R B Lady Standard 305-02

+\*JVC Cavalry G49  
 19714206 +\*RB Lady Regis 02-3213

BW
WW Ratio
YW Ratio

CED	BEPD	WEPD	YEPD	MILK	MARB	RE	\$M	\$W	\$B	\$C
+14	-2.4	+77	+131	+22	+7.0	+.54	+77	+75	+155	+278

56

Commercial

COMMERCIAL BULL | TATTOO: 276

57

Commercial

COMMERCIAL BULL | TATTOO: 2038

58

Commercial

COMMERCIAL BULL | TATTOO: 2079

54

BD: | BULL PENDING | TATTOO: K223

#\*JVC Cavalry V3326  
 #\*Connealy Cavalry 1149  
 +\*Bruseett Forever W857  
 #\*Coleman Regis 904  
 +\*R B Lady Standard 305-02

+\*JVC Cavalry G49  
 19714206 +\*RB Lady Regis 02-3213

BW
WW Ratio
YW Ratio

CED	BEPD	WEPD	YEPD	MILK	MARB	RE	\$M	\$W	\$B	\$C
+14	-2.4	+77	+131	+22	+7.0	+.54	+77	+75	+155	+278

59

BD: | BULL PENDING | TATTOO: 2019

#\*JVC Cavalry V3326  
 #\*Connealy Cavalry 1149  
 +\*Bruseett Forever W857  
 #\*Coleman Regis 904  
 +\*R B Lady Standard 305-02

+\*JVC Cavalry G49  
 19714206 +\*RB Lady Regis 02-3213

BW
WW Ratio
YW Ratio

CED	BEPD	WEPD	YEPD	MILK	MARB	RE	\$M	\$W	\$B	\$C
+14	-2.4	+77	+131	+22	+7.0	+.54	+77	+75	+155	+278

55

BD: | BULL PENDING | TATTOO: K247

#\*JVC Cavalry V3326  
 #\*Connealy Cavalry 1149  
 +\*Bruseett Forever W857  
 #\*Coleman Regis 904  
 +\*R B Lady Standard 305-02

+\*JVC Cavalry G49  
 19714206 +\*RB Lady Regis 02-3213

BW
WW Ratio
YW Ratio

CED	BEPD	WEPD	YEPD	MILK	MARB	RE	\$M	\$W	\$B	\$C
+14	-2.4	+77	+131	+22	+7.0	+.54	+77	+75	+155	+278

60

BD: | BULL PENDING | TATTOO: K3

#\*JVC Cavalry V3326  
 #\*Connealy Cavalry 1149  
 +\*Bruseett Forever W857  
 #\*Coleman Regis 904  
 +\*R B Lady Standard 305-02

+\*JVC Cavalry G49  
 19714206 +\*RB Lady Regis 02-3213

BW
WW Ratio
YW Ratio

CED	BEPD	WEPD	YEPD	MILK	MARB	RE	\$M	\$W	\$B	\$C
+14	-2.4	+77	+131	+22	+7.0	+.54	+77	+75	+155	+278





61

BD: | BULL PENDING | TATTOO: K24

+\*JVC Cavalry G49  
19714206 +\*RB Lady Regis 02-3213

\*Connealy Cavalry 1149  
+Brusett Forever W857  
\*Coleman Regis 904  
+\*R B Lady Standard 305-02

BW
WW Ratio
YW Ratio

CE	BEPD	WEPD	YEPD	MILK	MARB	RE	\$M	\$W	\$B	\$C
+14	-2.4	+77	+131	+22	+70	+.54	+77	+75	+155	+278

62

Commercial

COMMERCIAL BULL | TATTOO: K225

63

Commercial

COMMERCIAL BULL | TATTOO: K270

*Thank you*

Lacey Fahrmeier, DVM of Stillwater Vet Clinic, for semen testing;

San England for ultrasounding the bulls;

Tanner Jensen for clipping the bulls;

Steve and Amy Williams, and the crew at Midland Bull Test, for the feeding and care of the bulls.



# 70 JVC/PAR Rosa 5J

BD: 12-04-2021 | COW +\*20280138 | TATTOO: 5J

#\*SydGen Exceed 3223 +\*SydGen Googol  
 SydGen Enhance +\*SydGen Forever Lady 1255  
 16170041 SydGen Rita 2618 #\*SydGen Liberty GA 8627  
 #\*Sitz Upward 307R #Foxy Run Rita 9308  
 #\*Connealy Onward  
 \*River Hills Rosa X374 \*Sitz Henrietta Pride 81M  
 16760271 #River Hills Rosa R300 #Bon View New Design 1407  
 Plattemere Rosa 324

CED	BEPD	WEPD	YEPD	MILK	MARB	RE	\$M	\$W	\$B	\$C
+8	-.2	+62	+118	+34	+.63	+.79	+75	+67	+143	+260

# 74 JVC/PAR Rosa 12J

BD: 12-06-2021 | COW +\*20283457 | TATTOO: 12J

+\*G A R Ashland \*G A R Early Bird  
 \*G A R Home Town +\*Chair Rock Ambush 1018  
 19266718 +\*Chair Rock Sure Fire 6095 #+\*G A R Sure Fire  
 #\*Sitz Upward 307R +\*Chair Rock Progress 3005  
 #\*Connealy Onward  
 \*River Hills Rosa X374 \*Sitz Henrietta Pride 81M  
 16760271 #River Hills Rosa R300 #Bon View New Design 1407  
 Plattemere Rosa 324

CED	BEPD	WEPD	YEPD	MILK	MARB	RE	\$M	\$W	\$B	\$C
+10	+.1	+63	+115	+26	+1.03	+1.03	+75	+61	+168	+293

# 71

[CHP]  
 BD: 12-04-2021 | COW REG.NO.PDG. | TATTOO: 8J

SydGen Enhance #\*SydGen Exceed 3223  
 +\*RAR Revolution 8148 SydGen Rita 2618  
 19301062 +\*Woodside Rita 6569 of 5F56 #\*V A R Discovery 2240  
 +\*Rita 5F56 of 1198 FD  
 River Hills Objective T199 #\*S S Objective T510 0T26  
 River Hills Karama W266 +Baldridge Lady P872  
 16586948 River Hills Karama T287 #Baldridge Kaboom K243 KCF  
 Mill Brae Karama 3051 of RHR

CED	BEPD	WEPD	YEPD	MILK	MARB	RE	\$M	\$W	\$B	\$C
+9	-.1	+93	+170	+23	+1.22	+1.15	+69	+79	+205	+335
+8	+.8	+54	+101	+25	+.44	+.48	+53	+51	+134	+227

# 75 JVC/PAR Rosa 13J

BD: 12-06-2021 | COW +\*20283458 | TATTOO: 13J

SydGen Enhance #\*SydGen Exceed 3223  
 +\*RAR Revolution 8148 SydGen Rita 2618  
 19301062 +\*Woodside Rita 6569 of 5F56 #\*V A R Discovery 2240  
 +\*Rita 5F56 of 1198 FD  
 #\*Sitz Upward 307R #\*Connealy Onward  
 \*River Hills Rosa X374 \*Sitz Henrietta Pride 81M  
 16760271 #River Hills Rosa R300 #Bon View New Design 1407  
 Plattemere Rosa 324

CED	BEPD	WEPD	YEPD	MILK	MARB	RE	\$M	\$W	\$B	\$C
+8	+1.0	+84	+156	+33	+.52	+1.00	+49	+79	+169	+268

# 72 JVC/PAR Rosa 9J

BD: 12-05-2021 | COW +\*20283864 | TATTOO: 9J

#+\*Rito 112 of 2536 Rito 616 #Rito 616 of 4B20 6807  
 #+\*GAR-EGL Protege G A R Precision 2536  
 15098880 L B 6807 Isabel 339 #D H D Traveler 6807  
 #L B E31 Isabel 168  
 #\*Sitz Upward 307R #\*Connealy Onward  
 \*River Hills Rosa X374 \*Sitz Henrietta Pride 81M  
 16760271 #River Hills Rosa R300 #Bon View New Design 1407  
 Plattemere Rosa 324

CED	BEPD	WEPD	YEPD	MILK	MARB	RE	\$M	\$W	\$B	\$C
+3	+2.1	+75	+138	+26	+.59	+.92	+41	+64	+181	+276

# 76 Deleu Princess 128

BD: 10-13-2021 | COW +\*20283450 | TATTOO: 128

#+\*S AV Registry 2831 +Rito 707 of Ideal 3407 7075  
 #+\*S AV Seedstock 4838 S AV Madame Pride 0075  
 17923480 \*S AV Blackcap May 4136 #S AV 8180 Traveler 004  
 #+S AV May 2397  
 #S AV Net Worth 4200 #S AV 8180 Traveler 004  
 KLA Princess 0118 +S AV May 2410  
 16691417 KLA Princess K69 #Connealy Lead On  
 Viking Princess J52

CED	BEPD	WEPD	YEPD	MILK	MARB	RE	\$M	\$W	\$B	\$C
-1	+5.0	+63	+114	+17	-.02	+.97	+35	+36	+137	+213

# 73 JVC/PAR Rosa 10J

BD: 12-05-2021 | COW +\*20283865 | TATTOO: 10J

#+\*Rito 112 of 2536 Rito 616 #Rito 616 of 4B20 6807  
 #+\*GAR-EGL Protege G A R Precision 2536  
 15098880 L B 6807 Isabel 339 #D H D Traveler 6807  
 #L B E31 Isabel 168  
 #\*Sitz Upward 307R #\*Connealy Onward  
 \*River Hills Rosa X374 \*Sitz Henrietta Pride 81M  
 16760271 #River Hills Rosa R300 #Bon View New Design 1407  
 Plattemere Rosa 324

CED	BEPD	WEPD	YEPD	MILK	MARB	RE	\$M	\$W	\$B	\$C
+9	+0	+60	+100	+26	+.97	+.72	+51	+63	+166	+266

# 77 JVC/PAR Blackcap 18J

BD: 12-09-2021 | COW +\*20305890 | TATTOO: 18J

#\*Mytty In Focus #S A F Focus of E R  
 #\*Connealy In Focus 4925 Mytty Countess 906  
 15491720 Black Cana of Conanga 206 #Millers Bullseye J373  
 Black Cryse of Conanga 204  
 +\*G A R Progression #\*G A R Predestined  
 \*SS Blackcap Y3296 \*G A R Objective 2345  
 17011705 +Bohi Blackcap 3296 #C A Future Direction 5321  
 B/R Blackcap Empress 558

CED	BEPD	WEPD	YEPD	MILK	MARB	RE	\$M	\$W	\$B	\$C
+7	+1.3	+68	+102	+29	+1.19	+.32	+76	+74	+136	+252

# 78 JVC Everelda Entense 21 [MP]

BD: 12-04-2021 | COW 20333782 | TATTOO: 21

\*Spring Cove TL Cat D13  
 #\*Basin Bonus 4345  
 TL Ruby 4143  
 #\*JVC Cavalry V3326  
 +Coleman Lady 366  
 #D H D Traveler 6807  
 Dixie Erica of C H 1019  
 #+G A R Expectation 4915  
 +Sitz Everelda Entense 4789

\*T/D Tiger 8106  
 19142087

#JVC Lady 648

#+O C C Emblazon 854E

+Coleman Everelda Entense 960

16364809

\*Coleman Everelda Entense 455

CED	BEPD	WEPD	YEPD	MILK	MARB	RE	\$M	\$W	\$B	\$C
+15	-2.4	+54	+108	+30	+.44	+.84	+73	+60	+140	+255

# 82 JVC Pride 29

BD: 12-26-2021 | COW \*20349703 | TATTOO: 29

#\*JVC Cavalry V3326  
 #\*Connealy Cavalry 1149  
 +Brusett Forever W857  
 #\*Coleman Regis 904  
 +\*R B Lady Standard 305-02  
 #\*O C C Paxton 730P  
 +Bohi Abigale 6014  
 #\*Musgrave Aviator  
 JVC Pride 130

+\*JVC Cavalry G49  
 19714206

+\*RB Lady Regis 02-3213

#+\*Coleman Charlo 0256

JVC Pride 906

19540142

JVC Pride 712

CED	BEPD	WEPD	YEPD	MILK	MARB	RE	\$M	\$W	\$B	\$C
+9	-.1	+83	+135	+24	+.37	+.76	+98	+82	+144	+285

# 79 JVC Lady 24

BD: 12-10-2021 | COW \*20333784 | TATTOO: 24

\*Spring Cove TL Cat D13  
 #\*Basin Bonus 4345  
 TL Ruby 4143  
 #\*JVC Cavalry V3326  
 +Coleman Lady 366  
 #\*JVC Cavalry V3326  
 +JVC Lady Y1128  
 #+\*TC Franklin 619  
 River Hills Lady Max W501

\*T/D Tiger 8106  
 19142087

#JVC Lady 648

JVC Cavalry 610

JVC Lady 9048

19667471

JVC Lady Max 3342

CED	BEPD	WEPD	YEPD	MILK	MARB	RE	\$M	\$W	\$B	\$C
+16	-1.5	+66	+115	+27	+.68	+.88	+58	+68	+153	+256

# 83 JVC/PAR Rosa 3J

BD: 12-01-2021 | COW +\*20278981 | TATTOO: 3J

#+\*Rito 112 of 2536 Rito 616  
 #Rito 616 of 4B20 6807  
 G A R Precision 2536  
 #D H D Traveler 6807  
 #L B E31 Isabel 168  
 #\*Connealy Onward  
 #\*Sitz Upward 307R  
 #\*River Hills Rosa X374  
 #River Hills Rosa R300  
 #Rito 616 of 4B20 6807  
 #D H D Traveler 6807  
 #L B E31 Isabel 168  
 #\*Connealy Onward  
 #\*Sitz Henrietta Pride 81M  
 #Bon View New Design 1407  
 Plattemere Rosa 324

#+\*GAR-EGL Protege  
 15098880

L B 6807 Isabel 339

#\*Sitz Upward 307R

\*River Hills Rosa X374

16760271

#River Hills Rosa R300

CED	BEPD	WEPD	YEPD	MILK	MARB	RE	\$M	\$W	\$B	\$C
+8	+5	+61	+106	+32	+.59	+1.03	+69	+68	+147	+260

# 80 JVC Evergreen 25

BD: 12-24-2021 | COW 20333785 | TATTOO: 25

#\*Connealy Spur  
 #\*Connealy Stimulus 8419  
 #Jazza of Conanga 8594  
 #Connealy Dublin 8223  
 Vermilion Lass 9795  
 #+\*Coleman Charlo 0256  
 +\*Coleman Donna 714  
 +Limestone ND 1407 P522  
 +ER Eisa Evergreen N552

Vermilion Spur E870  
 19053226

Vermilion Lass 4942

+\*Coleman Bravo 6313

JVC Evergreen 95

19535760

C C A Eisa Evergreen 795

CED	BEPD	WEPD	YEPD	MILK	MARB	RE	\$M	\$W	\$B	\$C
+11	+2.0	+80	+138	+22	+.40	+.40	+79	+70	+137	+257

# 84 JVC/PAR Ellston 3K

BD: 01-02-2022 | COW +\*20300797 | TATTOO: 3K

#\*Musgrave 316 Stunner  
 #+\*LD Capitalist 316  
 #MCATL Blackbird 831-1378  
 #\*V A R Discovery 2240  
 DB Ms Final Tool 4120  
 #\*EF Commando 1366  
 \*Baldridge Isabel Y69  
 #\*Bruns Top Cut 373  
 #\*Erica of Ellston M38

\*DB Iconic G95  
 19611994

\*DB Ms Discovery D13

#+\*Baldridge 38 Special

+\*Erica of Ellston X52

19816301

#\*Erica of Ellston R96

CED	BEPD	WEPD	YEPD	MILK	MARB	RE	\$M	\$W	\$B	\$C
+11	-1.7	+80	+132	+37	+.96	+.66	+71	+93	+154	+271

# 81 JVC Rosa 28

BD: 12-25-2021 | COW \*20616469 | TATTOO: 28

SydGen Enhance  
 #\*SydGen Exceed 3223  
 SydGen Rita 2618  
 #\*Connealy Confidence Plus  
 \*Baldridge Isabel Y69  
 #\*EF Commando 1366  
 \*Baldridge Isabel Y69  
 #\*A A R Ten X 7008 S A  
 #River Hills Rosa R300

\*Baldridge SR Goalkeeper  
 19356243

+\*Baldridge Isabel E030

#+\*Baldridge Bronc

\*RHR Rosa 7066

18887432

+\*JVC Rosa B457

CED	BEPD	WEPD	YEPD	MILK	MARB	RE	\$M	\$W	\$B	\$C
+15	-2.2	+64	+119	+37	+.79	+.67	+96	+77	+127	+261

# 85 JVC/PAR Rosa 4J

BD: 12-03-2021 | COW +\*20283470 | TATTOO: 4J

SydGen Enhance  
 #\*SydGen Exceed 3223  
 SydGen Rita 2618  
 #\*V A R Discovery 2240  
 +\*Rita 5F56 of 1198 FD  
 #\*Connealy Onward  
 #\*Sitz Upward 307R  
 #\*River Hills Rosa X374  
 #River Hills Rosa R300  
 #Rito 616 of 4B20 6807  
 #D H D Traveler 6807  
 #L B E31 Isabel 168  
 #\*Connealy Onward  
 #\*Sitz Henrietta Pride 81M  
 #Bon View New Design 1407  
 Plattemere Rosa 324

+\*RAR Revolution 8148  
 19301062

+\*Woodside Rita 6569 of 5F56

#\*Sitz Upward 307R

\*River Hills Rosa X374

16760271

#River Hills Rosa R300

CED	BEPD	WEPD	YEPD	MILK	MARB	RE	\$M	\$W	\$B	\$C
+15	-1.2	+75	+139	+31	+.89	+1.05	+63	+74	+170	+283



# 86 JVC/PAR Rosa 20J

BD: 12-09-2021 | COW +\*20291396 | TATTOO: 20J

SydGen Enhance  
16170041 SydGen Rita 2618

#\*SydGen Exceed 3223  
+\*SydGen Googol  
+\*SydGen Forever Lady 1255  
#\*SydGen Liberty GA 8627  
#Fox Run Rita 9308  
#\*Connealy Onward  
\*Sitz Upward 307R

\*River Hills Rosa X374  
16760271 #River Hills Rosa R300

\*Sitz Henrietta Pride 81M  
#Bon View New Design 1407  
Plattermere Rosa 324

CED	BEPD	WEPD	YEPD	MILK	MARB	RE	\$M	\$W	\$B	\$C
+2	+2.4	+85	+157	+29	+.87	+.40	+52	+73	+179	+284

# 90

BD: 01-03-2022 | COW REG.NO.PDG. | TATTOO: 220

\*Baldridge SR Goalkeeper  
19356243 +\*Baldridge Isabel E030

SydGen Enhance  
#\*SydGen Exceed 3223  
SydGen Rita 2618  
#\*Connealy Confidence Plus  
#Baldridge Isabel Y69  
#\*Connealy Onward  
\*Sitz Upward 307R

+JVC Countess A359  
17617913 +\*Buford Countess V9112

#\*Connealy Stimulus 8419  
#Jazza of Conanga 8594  
#Connealy Dublin 8223  
Vermilion Lass 9795  
#C F Right Design 1802  
Summitcrest Elba 1M17  
#+G A R New Design 5050  
+\*S V F Rita T034

CED	BEPD	WEPD	YEPD	MILK	MARB	RE	\$M	\$W	\$B	\$C
+4	+1.6	+67	+136	+25	+1.16	+.91	+66	+55	+177	+296
+7	+1.9	+63	+108	+38	+.47	+.47	+68	+72	+135	+243

# 87

BD: 12-28-2021 | COW REG.NO.PDG. | TATTOO: 211

\*Baldridge SR Goalkeeper  
19356243 +\*Baldridge Isabel E030

JVC Elba 44009  
18081378 River hills Elba W105

SydGen Enhance  
#\*SydGen Exceed 3223  
SydGen Rita 2618  
#\*Connealy Confidence Plus  
#Baldridge Isabel Y69  
#\*Connealy Onward  
^SVA Lady 4465-9114  
#CAR Efficient 534  
River Hills Elba T189

CED	BEPD	WEPD	YEPD	MILK	MARB	RE	\$M	\$W	\$B	\$C
+4	+1.6	+67	+136	+25	+1.16	+.91	+66	+55	+177	+296
+7	+0	+60	+105	+26	+.27	+.39	+75	+61	+110	+218

# 91 JVC Rita 221

BD: 01-04-2022 | COW \*20333787 | TATTOO: 221

Vermilion Spur E870  
19053226 Vermilion Lass 4942

+\*JVC Rita A367  
17613707 +\*B B R Rita 9003

#\*Connealy Spur  
#\*Connealy Stimulus 8419  
#Jazza of Conanga 8594  
#Connealy Dublin 8223  
Vermilion Lass 9795  
#\*Summitcrest Complete 1P55

CED	BEPD	WEPD	YEPD	MILK	MARB	RE	\$M	\$W	\$B	\$C
+7	+.7	+55	+102	+38	+.65	+.56	+76	+67	+130	+245

# 88 JVC Lass 212

BD: 12-28-2021 | COW 20349715 | TATTOO: 212

+\*JVC Cavalry G49  
19714206 +\*RB Lady Regis 02-3213

Bobcat Lass 272  
17297412 Bobcat O Lass 514

#\*JVC Cavalry V3326  
#\*Connealy Cavalry 1149  
+Brusett Forever W857  
#\*Coleman Regis 904  
+\*R B Lady Standard 305-02  
#Nichols Extra K205  
Vermilion Lady 2888  
#Connealy Danny Boy  
Vermilion O Lass 9847

CED	BEPD	WEPD	YEPD	MILK	MARB	RE	\$M	\$W	\$B	\$C
+12	-.9	+68	+102	+19	+.53	+.67	+81	+70	+120	+237

# 92 JVC Blackbird 227

BD: 01-20-2022 | COW 20345516 | TATTOO: 227

Vermilion Spur E870  
19053226 Vermilion Lass 4942

JVC Blackcap 4415  
18229672 +JVC Blackcap X019

#\*Connealy Spur  
#\*Connealy Stimulus 8419  
#Jazza of Conanga 8594  
#Connealy Dublin 8223  
Vermilion Lass 9795  
#\*Sitz Upward 307R  
+\*Coleman Lineman 229  
+\*Coleman Donna 714  
#\*O C C Missing Link 830M  
+Callaways Blackcap 0653

CED	BEPD	WEPD	YEPD	MILK	MARB	RE	\$M	\$W	\$B	\$C
+3	+3.7	+68	+120	+21	1+.47	1+.42	+69	+50	+140	+251

# 89

BD: 01-02-2022 | COW REG.NO.PDG. | TATTOO: 218

Vermilion Spur E870  
19053226 Vermilion Lass 4942

+JVC Ruby of Tiffany A340  
17612895 \*T B A Ruby of Tiffany 9011

#\*Connealy Spur  
#\*Connealy Stimulus 8419  
#Jazza of Conanga 8594  
#Connealy Dublin 8223  
Vermilion Lass 9795  
#\*S A V Pioneer 7301  
#\*S A V Final Answer 0035  
S A V Blackbird 5297  
#\*G A R Predestined  
+T B A Ruby of Tiffany 523

CED	BEPD	WEPD	YEPD	MILK	MARB	RE	\$M	\$W	\$B	\$C
+4	+2.5	+81	+137	+17	+.49	+.69	+75	+64	+161	+284
+8	+1.1	+49	+86	+25	+.67	+.52	+48	+49	+129	+215

# 93 JVC Bluebird 249

BD: 02-17-2022 | COW 20333798 | TATTOO: 249

McD Effective 789  
18952013 #McD Performiss 238

McD -2 Bluebird 018  
19939141 +YA Bluebird Lass 0515

\*AB-LVS Capitalist 4507  
#\*Connealy Capitalist 028  
#Ab-Lvs Emma 096  
#Willekes Converter 4402-9  
+313 Performiss 006  
#3F Epic 4631  
MCATL Forever Lady 1429-138  
#C H Quantum 3330  
Y A Highroller Lass 202

CED	BEPD	WEPD	YEPD	MILK	MARB	RE	\$M	\$W	\$B	\$C
+2	+3.2	+58	+109	+25			+59	+43		

# Pairs

Offering 30 registered pairs. Pedigrees and calf information available sale day or upon request. Contact us for more information.



Vermilion Growth Fund J207 - Sire of the calves at side.



Vermilion Spur E780 - Sire of many of these first calf heifers, as well as several bull and open heifers selling.





# American Angus Association Selection Tools

**Expected Progeny Difference (EPD)**, is the prediction of how future progeny of each animal are expected to perform relative to the progeny of other animals listed in the database. EPDs are expressed in units of measure for the trait, plus or minus. Interim EPDs may appear on young animals when their performance has yet to be incorporated into the American Angus Association National Cattle Evaluation (NCE) procedures. This EPD will be preceded by an "I", and may or may not include the animal's own performance record for a particular trait, depending on its availability, appropriate contemporary grouping, or data edits needed for NCE.

**Accuracy (ACC)**, is the reliability that can be placed on the EPD. An accuracy of close to 1.0 indicates higher reliability. Accuracy is impacted by the number of progeny and ancestral records included in the analysis.

**Calving Ease Direct (CED)**, is expressed as a difference in percentage of unassisted births, with a higher value indicating greater calving ease in first-calf heifers. It predicts the average difference in ease with which a sire's calves will be born when he is bred to first-calf heifers.

**Birth Weight (BW)**, expressed in pounds, is a predictor of a sire's ability to transmit birth weight to his progeny compared to that of other sires.

**Weaning Weight (WW)**, expressed in pounds, is a predictor of a sire's ability to transmit weaning growth to his progeny compared to that of other sires.

**Residual Average Daily Gain (RADG)**, feed efficiency expressed in pounds per day, is a predictor of a sire's genetic ability for postweaning gain in future progeny compared to that of other sires, given a constant amount of feed consumed.

**Yearling Weight (YW)**, expressed in pounds, is a predictor of a sire's ability to transmit yearling growth to his progeny compared to that of other sires.

**Yearling Height (YH)**, is a predictor of a sire's ability to transmit yearling height, expressed in inches, compared to the that of other sires.

**Scrotal Circumference (SC)**, expressed in centimeters, is a predictor of the difference in transmitting ability for scrotal size compared to that of other sires.

**Docility (DOC)**, is expressed as a difference in yearling cattle temperament, with a higher value indicating more favorable docility in a sire's offspring compared to another sire.

## MATERNAL

**Heifer Pregnancy (HP)**, is a selection tool to increase the probability or chance of a sire's daughters becoming pregnant as first-calf heifers during a normal breeding season. A higher EPD is the more favorable direction, and the EPD is reported in percentage units.

**Calving Ease Maternal (CEM)**, is expressed as a difference in percentage of unassisted births, with a higher value indicating greater calving ease in first-calf daughters. It predicts the average ease with which a sire's daughters will calve as first-calf heifers when compared to daughters of other sires.

**Maternal Milk (Milk)**, is a predictor of a sire's genetic merit for milk and mothering ability in his daughters compared to daughters of other sires. In other words, it is that part of a calf's weaning weight attributed to milk and mothering ability.

**Mature Weight (MW)**, expressed in pounds, is a predictor of the difference in mature weight of daughters of a sire compared to the daughters of other sires.

**Mature Height (MH)**, expressed in inches, is a predictor of the difference in mature height of a sire's daughters compared to daughters of other sires.

## FOOT SCORE

**Claw Set (Claw)**, is expressed in units of claw-set score. A lower EPD is more favorable, indicating a sire will produce progeny with more ideal claw set, which is toes that are symmetrical, even and appropriately spaced.

**Foot Angle (Angle)**, is expressed in units of foot-angle score. A lower EPD is more favorable, indicating a sire will produce progeny with more ideal foot angle, which is a 45-degree angle at the pastern joint with appropriate toe length and heel depth.

## CARCASS

The genetic evaluation produces a single set of EPDs for carcass traits where the units of measure are in trait format and analyzed on an age-constant basis.

**Carcass Weight (CW)**, expressed in pounds, is a predictor of the differences in hot carcass weight of a sire's progeny compared to progeny of other sires.

**Marbling (Marb)**, is expressed as a fraction of the difference in USDA marbling score of a sire's progeny compared to progeny of other sires.

**Ribeye Area (RE)**, expressed in square inches, is a predictor of the difference in ribeye area of a sire's progeny compared to progeny of other sires.

**Fat Thickness (Fat)**, expressed in inches, is a predictor of the differences in external fat thickness at the 12th rib (as measured between the 12th and 13th ribs) of a sire's progeny compared to progeny of other sires.

## \$VALUE INDEXES

**\$Value Indexes**, reported in dollars per head, are multi-trait selection indexes where a higher value suggests more profit. The \$Value is an estimate of how future progeny of each sire are expected to perform, on average, compared to progeny of other sires if sires were randomly mated to cows and if calves were exposed to the same environment.

**Maternal Weaned Calf Value (\$M)**, expressed in dollars per head, predicts profitability differences in progeny due to genetics from conception to weaning. Increased selection pressure on \$M aims to decrease overall mature cow size and improve foot structure and fertility while maintaining weaning weights consistent with today's production.

**Weaned Calf Value (\$W)**, expressed in dollars per head, provides the expected difference in future progeny preweaning performance from birth to weaning. Increased selection pressure on \$W increases weaning and maternal milk traits while increasing mature cow size.

**Cow Energy Value (\$EN)**, expressed in dollars savings per cow per year, assesses differences in cow energy requirements as an expected dollar savings difference in daughters of sires. A larger value is more favorable when comparing two animals. Components for computing \$EN savings difference include lactation energy requirements and energy costs associated with differences in mature cow size.

**Feedlot Value (\$F)**, expressed in dollars per head, is the expected average difference in future progeny performance for postweaning merit compared to progeny of other sires. The underlying objective assumes commercial producers will retain ownership of cattle through the feedlot phase and sell fed cattle on a carcass weight basis with no considerations of premiums or discounts for quality and yield grade.

**Grid Value (\$G)**, expressed in dollars per carcass, is the expected average difference in future progeny performance for carcass grid merit, including quality and yield grade attributes, compared to progeny of other sires.

**Beef Value (\$B)**, expressed in dollars per carcass, represents the expected average differences in the progeny postweaning performance and carcass value compared to progeny of other sires. This index assumes commercial producers wean all male and female progeny, retain ownership of these animals through the feedlot phase, and market these animals on a quality-based carcass grid.



# YOU'VE EARNED IT



You've made a significant investment in your genetics, but does the market recognize that? The AngusLink<sup>SM</sup> Genetic Merit Scorecard was created to objectively describe the genetic merit of your feeder calves. The scorecard gives buyers the confidence they need to pay more for your quality calves.

In 2022, users of the Genetic Merit Scorecard earned a **\$12.94/CWT PREMIUM** on average. Give us a call and we can help you earn what you deserve.





**Jocko Valley Cattle**  
5571 Alloy South  
Missoula, MT 59808

PRSRT  
FIRST CLASS  
U.S. Postage  
**PAID**  
St. Joseph, MO  
Permit #2017

# JOCKO VALLEY CATTLE

## *Bull and Female Sale*

1:00 PM, Thursday, **APRIL 13, 2023** Missoula, MT  
*Five Valley Livestock Auction*

