

# Open Gate Ranch

## 43<sup>rd</sup> Annual Bull Sale



**Friday, March 31, 2023**

**1:00 pm • Augusta, MT**

At Broken O Land and Livestock

**Simmental. SimAngus. BUILD BETTER BEEF.**

# Notes on Reading our Sale Book...

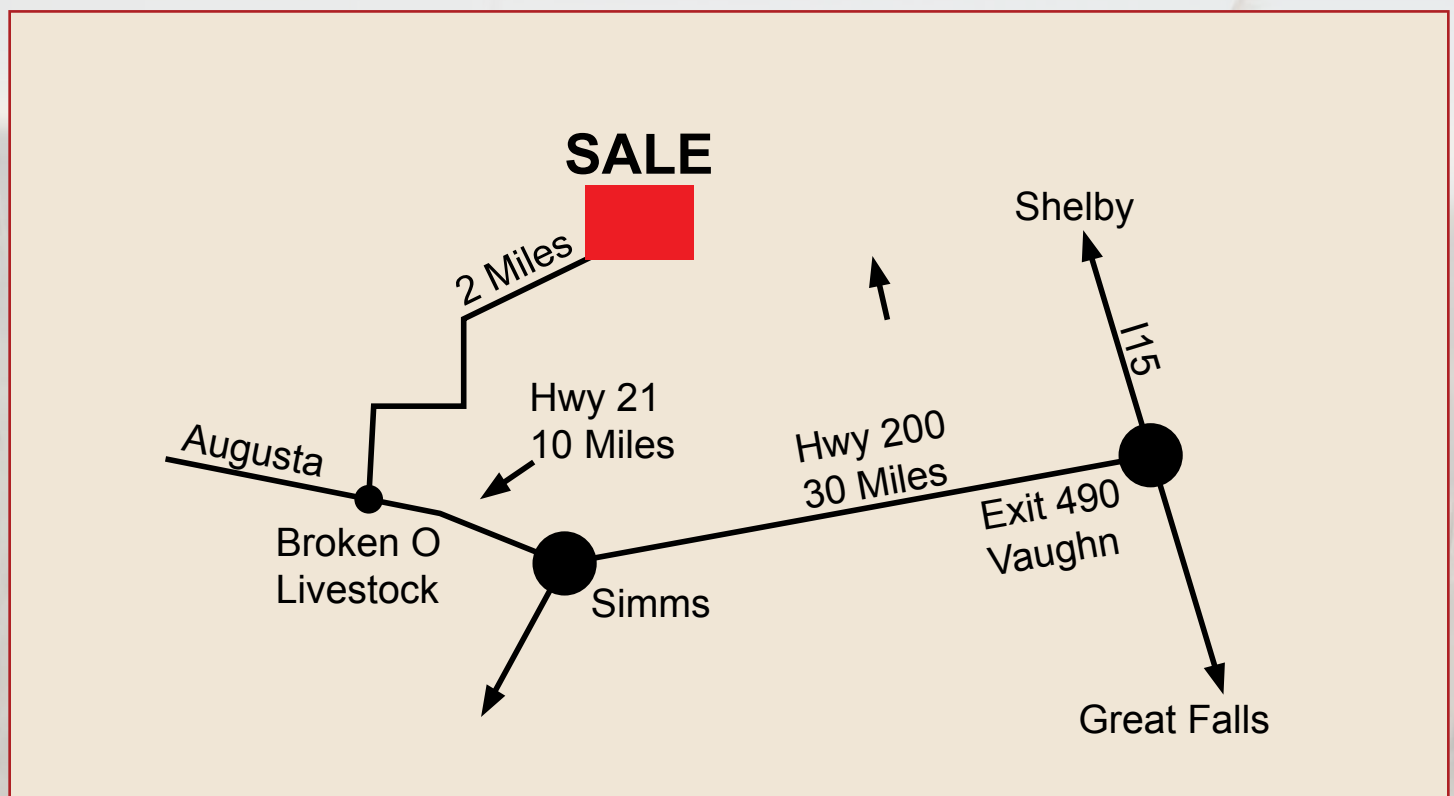


When we sort through the stacks of Bull Sale Books we receive each year, we notice everyone presents their data a bit differently. Surely, this can get confusing-but it's important to remember there is no right or wrong formula to building a catalog. We choose to present the data that is most relevant to the way we make breeding decisions, the way we manage our cattle, and the trends we want to be able to track and observe in each year's calf crop.

For example, we like to think of our cattle in simple, straightforward terms, that we can actually keep straight mentally and visualize. So we don't include as many EPDs as we could. We monitor our trends on all of the traits and understand their merit, but we strive to effect change according to what most of our customers need. So a simpler data set works well for us. We continue to provide actual records of ultrasound, gain, and birthweight, because we like to see whether traits are truly manifesting themselves - if the patterns in a sire group show that genetic markers have actually triggered and are doing what they promise. Large discrepancies or inconsistencies in a sire group are a red flag to us and will influence our decision of whether to use a sire again.

So please don't hesitate to reach out to one of us if you do not see data you need, or if it is unclear why we include it. We would love to help you utilize better the patterns we see when we put it together every year.

## Sale Location





# Open Gate Ranch

Friday, March 31, 2023

1:00 pm • Augusta, MT

At Broken O Land and Livestock

## SCHEDULE OF EVENTS

### FRIDAY, MARCH 31

All Day Cattle available for viewing  
*Come early for coffee and to see the bulls.*

12:00 NOON Lunch

1:00 PM **OPEN GATE RANCH BULL SALE**

## SALE LOCATION

Broken O Land and Livestock is located ten miles west of Simms, MT on Highway 21. For map and directions, see opposite page.

## AUCTIONEER

Roger Jacobs

## LIVESTOCK PRESS REPRESENTATIVES

John Goggins, *Western Ag Reporter*  
Jeff Thomas, *Lee Agri Media*  
Devin Murnin, *Western Livestock Journal*

## SEMEN INTEREST

Open Gate Ranch reserves the right to collect semen for our personal use on any of the bulls offered in the sale. This will be done outside the breeding season at our expense.

## SATISFACTION GUARANTEED

Open Gate Ranch offers a **COMPLETE SATISFACTION AND SOUNDNESS GUARANTEE** up to the second breeding season on every bull purchased at our sale. This includes bull replacement or full credit minus salvage against a new one. Please notify one of us immediately if any problem develops. We truly want to be the first to know.

Any individual purchasing **3 OR MORE BULLS WILL RECEIVE A 5% VOLUME DISCOUNT** off the purchase price.

There is **\$100 DISCOUNT PER BULL FOR HAULING** your own on sale day.

Buyers unable to attend the sale can **PURCHASE BULLS SIGHT UNSEEN** and know that when we deliver them - if you don't like them, you don't own them. Please contact us ahead of time if you would like to bid by proxy or by phone.

SALE DAY PHONE 406-264-5926

### FAMILY PHONES:

Mike and Kim 467-2082 • Julie 590-4063 • Micah 590-1609  
Dustin 590-6016

[www.OPENGATERANCH.COM](http://www.OPENGATERANCH.COM)

## ABOUT THE BULLS

The bulls are available for viewing at the ranch prior to the sale. They are located in the development pasture near the ranch. From Fairfield, take Hwy 408 west for 9.5 miles, turn north onto the gravel, top the big hill, 3/4 of a mile further the and the bulls are on the right.

Videos of the bulls available online [www.opengateranch.com](http://www.opengateranch.com)

**EPDS** on both sale bulls and Reference Sires are printed as calculated by American Simmental Association and follow the Simmental definition for each trait.

**ULTRASOUND SCAN DATA** was taken on 2/28/2023 by Sonya Gregory and interpreted at a Central Ultrasound Processing Lab. It is an actual calculation of each bull's carcass information that has been adjusted to a 365 day measurement, which will facilitate accurate comparison between bulls. American Simmental Association provided updated Carcass EPDs based on the scan data. IMF is marbling as a percent of mass, BF is back fat in percent of inch, and REA is rib eye in square inches. Ultrasound data available sale day.

**SCROTAL EVALUATION AND FERTILITY TESTING** was done by Dr. Cale Bjornstad on 3/1/2023.

## BID LIVE ONLINE

Sale will be live online  
[northernlivestockvideo.com](http://northernlivestockvideo.com)



**ALLIED**  
GENETIC RESOURCES

Marty Ropp 406-581-7835  
Rocky Forseth 406-590-7984  
Jared Murnin 406-321-1542  
[www.alliedgeneticresources.com](http://www.alliedgeneticresources.com)

# WELCOME TO THE SALE



## Genetics that *pay*

The demand for crossbred feeder calves is **stronger than ever**, and SimAngus lead the pack. We offer genetics for powerful feeder calves AND powerful females for **long-term sustainable profit**.

Everyone is talking . . . so many glimmers of a shift in the Beef Business; a shift in profits back toward the cattlemen. Everyone is talking about how high the cycle might take us this time, and how heifers will finally be worth their weight again and if we can just get the grass coming a little earlier and if all the market projections could just hold until contract time. . . .

All of that adds up to Hope. And people who are hopeful tend to accomplish amazing things. So our focus, as a Family and a Family Business this year is to harness it. The best way to convert Hope into Reality is to act on it.

Let us begin with the distillation of what this year's Bull offering represents: so that you know what there is to harness.

One strength is the consistent advantage in Weaning Weight. This has been built into our program without moving the final size of our cattle upward. So no matter your style preference or what breed percentage you are after, these Bulls will give you the same results: an impact on profit.

Another key is that we pay attention to rib. We know most of these Bulls will be complimenting Angus dominated cowherds, so muscle expression, topline strength, and carcass yield is what we're bringing to the table. That will blend into excellent finish quality and no waste.

As ever, each sire group is maternal focused: there are no terminal driven matings here. We want our customers to be confident about retaining females from these Bulls with a complete package of sustainable functionality built in.

The ultimate objective has always been harnessing the powerful, irrepresible advantages of crossbreeding. We try to protect your interests in the way we develop as well. These cattle are rugged, with well grown frames; born with enough substance to thrive in what Northern Montana dishes out. We focus on robust rumen development so they will transfer seamlessly into your feeding program. We believe in careful management, but not babying: the bulls toughed out a long, windy, miserable winter this year and still passed their soundness and breeding evaluations with honors. The heifers went straight to grass stubble after weaning and wintered on long stem hay. By sale time, they will have been on flax and protein supplement for a month; ready to flush up and breed.

The rest is up to you: as you contemplate your genetic choices for the coming breeding season, let us know how we can help. Let's build a calf crop together that will take next year's opportunities by storm and convert everyone's Optimism into a well earned payoff.

Warm greetings and best wishes for the remainder of your calving season,  
*The Open Gate Crew*



# HOOK'S EAGLE 6E

In his 4th year of siring an impeccable genetic profile that adds value to every segment, this attractive combination of performance and carcass quality is proving consistent, measurable and versatile. You will notice, our group looks like a matched set, and they have all the way through.



HOOK'S EAGLE 6E Reference Sire.

## HOOK'S EAGLE 6E

3/4 SM 1/4 AN Bull ASA #3253742

SIRE: HOOK'S BLACK HAWK 50B

MGS: GW-WBF SUBSTANCE 820Y

CE	BW	WW	YW	MCE	MILK	MWW	MARB	REA	\$API	\$TI
14.2	-2.2	100.7	158	4.6	18.2	68.5	0.58	1.32	169.4	103.5

# Bulls to sire OPTIMISM!

## 1 KG349 9/16 SM

Black Polled  
Bull ASA #4156051 KG349 BD: 1/13/2022

HOOK'S BLACK HAWK 50B

TJ COWBOY UP 529B

HOOK'S EAGLE 6E

OGRG349

HOOK'S CRYSTAL 1C

Z100

365 Day Ultrasound										
BW	10/22 WW	SALE WT	SC	ADG	WDA	IMF	BF	REA		
86	1038	1486	40.0	3.20	3.18	2.53	0.23	13.86		
CE	BW	WW	YW	MCE	MILK	MWW	MB	REA	API	TI
11.8	0.2	94	147	5.8	24.4	71.4	0.53	0.84	152.1	95.2



KG349 Sells as Lot 1.

## 2 KH389 9/16 SM

Black Polled  
Bull ASA #4156055 KH389 BD: 1/8/2022

HOOK'S BLACK HAWK 50B

SYDGEN ENHANCE

HOOK'S EAGLE 6E

H389

HOOK'S CRYSTAL 1C

OGRF742

365 Day Ultrasound										
BW	10/22 WW	SALE WT	SC	ADG	WDA	IMF	BF	REA		
86	1016	1526	39.5	3.44	3.23	3.19	0.24	14.38		
CE	BW	WW	YW	MCE	MILK	MWW	MB	REA	API	TI
14	-1.3	96.8	157.5	6.5	22.1	70.5	0.53	1.10	161.2	99.1

## 3 KH449 9/16 SM

Black Polled  
Bull ASA #4150082 KH449 BD: 1/12/2022

HOOK'S BLACK HAWK 50B

S A V TERRITORY 7225

HOOK'S EAGLE 6E

H449

HOOK'S CRYSTAL 1C

OGRD373

365 Day Ultrasound										
BW	10/22 WW	SALE WT	SC	ADG	WDA	IMF	BF	REA		
80	868	1266	40.0	2.91	2.63	3.10	0.16	13.04		
CE	BW	WW	YW	MCE	MILK	MWW	MB	REA	API	TI
13.3	-1.1	91.2	145.9	5.2	17.3	62.9	0.40	0.95	144.7	89.0

**4 KH503 3/4 SM**

Black Polled  
Bull ASA #4150086 KH503 BD: 1/14/2022

HOOK'S BLACK HAWK 50B WS PROCLAMATION E202  
HOOK'S EAGLE 6E H503  
HOOK'S CRYSTAL 1C OGRA357

365 Day Ultrasound										
BW	10/22 WW	SALE WT	SC	ADG	WDA	IMF	BF	REA		
90	930	1406	36.0	3.40	2.99	3.65	0.14	14.68		
CE	BW	WW	YW	MCE	MILK	MWW	MB	REA	API	TI
11.8	0.4	94.3	144.1	5.2	22.3	69.4	0.44	0.97	154.7	92.4



KH376 Sells as Lot 5.



KH380 Sells as Lot 6.

**5 KH376 1/2 SM**

Black Polled  
Bull ASA #4145891 KH376 BD: 1/12/2022

HOOK'S BLACK HAWK 50B SYDGEN ENHANCE  
HOOK'S EAGLE 6E H376  
HOOK'S CRYSTAL 1C OGRF737

365 Day Ultrasound										
BW	10/22 WW	SALE WT	SC	ADG	WDA	IMF	BF	REA		
90	964	1436	40.5	3.60	3.05	2.95	0.25	14.34		
CE	BW	WW	YW	MCE	MILK	MWW	MB	REA	API	TI
13.0	-0.3	96.2	154.9	5.7	20.5	68.6	0.53	0.96	151.3	95.0

**6 KH380 3/4 SM**

Heterozygous Black Polled  
Bull ASA #4145924 KH380 BD: 1/12/2022

HOOK'S BLACK HAWK 50B LEACHMAN CADILLAC L025A  
HOOK'S EAGLE 6E H380  
HOOK'S CRYSTAL 1C OGRF857

365 Day Ultrasound										
BW	10/22 WW	SALE WT	SC	ADG	WDA	IMF	BF	REA		
92	896	1376	41.0	2.80	2.90	3.65	0.17	14.84		
CE	BW	WW	YW	MCE	MILK	MWW	MB	REA	API	TI
12.0	0.2	90.4	141.7	6.0	20.7	65.9	0.35	1.01	142.8	88.1

**7 KH433 9/16 SM**

Black Polled  
Bull ASA #4150110 KH433 BD: 1/14/2022

HOOK'S BLACK HAWK 50B S A V TERRITORY 7225  
HOOK'S EAGLE 6E H433  
HOOK'S CRYSTAL 1C OGRA562

365 Day Ultrasound										
BW	10/22 WW	SALE WT	SC	ADG	WDA	IMF	BF	REA		
86	878	1316	37.5	3.10	2.77	2.27	0.12	13.48		
CE	BW	WW	YW	MCE	MILK	MWW	MB	REA	API	TI
11.7	0.0	90.7	144.5	4.0	15.4	60.7	0.49	0.95	143.8	89.1



KH504 Sells as Lot 8.

**8 KH504 5/8 SM**

Black Polled  
Bull ASA #4156050 KH504 BD: 1/7/2022

HOOK'S BLACK HAWK 50B S A V TERRITORY 7225  
HOOK'S EAGLE 6E OGRH504  
HOOK'S CRYSTAL 1C Z540

365 Day Ultrasound										
BW	10/22 WW	SALE WT	SC	ADG	WDA	IMF	BF	REA		
82	982	1356	38.5	3.30	2.82	3.10	0.21	13.66		
CE	BW	WW	YW	MCE	MILK	MWW	MB	REA	API	TI
12.4	-0.4	93.9	145.5	4.5	19.6	66.5	0.47	1.02	153.3	95.0



# 9 KH387 1/2 SM

Black Polled  
Bull ASA #4150113 KH387 BD: 1/9/2022

HOOK'S BLACK HAWK 50B SYDGEN ENHANCE  
HOOK'S EAGLE 6E H387  
HOOK'S CRYSTAL 1C OGRF785

365 Day Ultrasound

BW	10/22 WW	SALE WT	SC	ADG	WDA	IMF	BF	REA		
82	966	1386	37.5	2.80	2.90	5.35	0.12	11.60		
CE	BW	WW	YW	MCE	MILK	MWW	MB	REA	API	TI
12.3	-0.7	95.8	153.3	5.5	22.0	69.8	0.63	0.91	154.2	97.3

# 10 KH466 1/2 SM

Black Polled  
Bull ASA #4150119 KH466 BD: 1/6/2022

HOOK'S BLACK HAWK 50B S A V TERRITORY 7225  
HOOK'S EAGLE 6E H466  
HOOK'S CRYSTAL 1C OGRF870

365 Day Ultrasound

BW	10/22 WW	SALE WT	SC	ADG	WDA	IMF	BF	REA		
72	902	1346	37.5	3.60	2.79	3.34	0.22	12.95		
CE	BW	WW	YW	MCE	MILK	MWW	MB	REA	API	TI
13.4	-1.6	90.9	144.5	4.7	18.2	63.5	0.50	0.97	150.0	91.9

# 11 KH462 5/8 SM

Black Polled  
Bull ASA #4150100 KH462 BD: 1/8/2022

HOOK'S BLACK HAWK 50B QHF WWA BLACK ONYX 5Q11  
HOOK'S EAGLE 6E H462  
HOOK'S CRYSTAL 1C OGRA526

365 Day Ultrasound

BW	10/22 WW	SALE WT	SC	ADG	WDA	IMF	BF	REA		
78	902	1296	38.0	2.40	2.68	3.36	0.18	13.18		
CE	BW	WW	YW	MCE	MILK	MWW	MB	REA	API	TI
14.7	-2.2	88.0	140.4	6.5	19.2	63.1	0.47	1.00	150.9	90.8



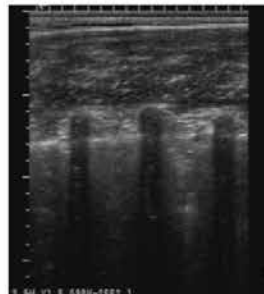
**Sonja Gregory**  
Bar D Livestock Services  
UGC Certified Technician  
Lewistown, MT  
406-538-8824 406-670-2045  
bardlivestock@yahoo.com



Rump Fat



Ribeye Area & Fat Thickness



% Intramuscular Fat

*Ranchers who care about their data use UltraInsights to "take a peek under the hide." Improve your herd and create more value for your customers. Schedule your ultrasound today!*



Visit us at [www.ultrainsights.com](http://www.ultrainsights.com)  
(660)562-2074 [call or text]  
ui@ultrainsights.com



# POSS RAWHIDE

Standing out by progeny data and by popularity, he is siring consistency in growth, practical calving ease and carcass merit. Impressive phenotype and a powerfully stacked maternal heritage.



POSS RAWHIDE Reference Sire.

## POSS RAWHIDE

**PB AN** Bull ASA #3876177

**SIRE:** POSS MAVERICK

**MGS:** POSS EASY IMPACT 0119

CE	BW	WW	YW	MCE	MILK	MWW	MARB	REA	\$API	\$TI
18.9	-2.7	98.8	152.7	8.5	23.9	73.2	1.01	0.75	166.8	102.5

# Bulls to sire OPTIMISM!

## 12 KF983 1/4 SM

Black Polled  
Bull ASA #4150102 KF983 BD: 2/11/2022

POSS MAVERICK OGRDX203  
POSS RAWHIDE F983  
POSS BLUEBLOOD 6502 OGRY621

365 Day Ultrasound										
BW	10/22 WW	SALE WT	SC	ADG	WDA	IMF	BF	REA		
86	918	1406	40.0	3.30	3.21	3.44	0.23	14.13		
CE	BW	WW	YW	MCE	MILK	MWW	MB	REA	API	TI
14.5	-0.2	91.5	142.1	7.6	24.2	69.9	0.59	0.75	145.5	92.3

## 13 KD253 1/4 SM

Black Polled  
Bull ASA #4145757 KD253 BD: 2/10/2022

POSS MAVERICK TSN PROTEGE Z896  
POSS RAWHIDE OGRD253  
POSS BLUEBLOOD 6502 OGRX728

365 Day Ultrasound										
BW	10/22 WW	SALE WT	SC	ADG	WDA	IMF	BF	REA		
86	934	1386	38.5	3.50	3.15	3.29	0.28	13.51		
CE	BW	WW	YW	MCE	MILK	MWW	MB	REA	API	TI
14.1	0.2	91.1	138.8	6.5	20.0	65.5	0.66	0.70	150.2	92.3



KE481 Sells as Lot 14.

## 14 KE481 1/4 SM

Black Polled  
Bull ASA #4150108 KE481 BD: 3/1/2022

POSS MAVERICK TJ COWBOY UP 529B  
POSS RAWHIDE OGRE481  
POSS BLUEBLOOD 6502 OGRA364

365 Day Ultrasound										
BW	10/22 WW	SALE WT	SC	ADG	WDA	IMF	BF	REA		
85	902	1326	39.5	1.70	3.15	3.66	0.14	13.22		
CE	BW	WW	YW	MCE	MILK	MWW	MB	REA	API	TI
15.0	-1.2	88.0	133.3	8.1	24.8	68.8	0.67	0.58	158.3	92.9



# 15 KF888 3/8 SM

Black Polled  
 Bull ASA #4150090 KF888 BD: 1/20/2022

POSS MAVERICK SVRW909  
 POSS RAWHIDE OGRF888  
 POSS BLUEBLOOD 6502 OGRB653

365 Day Ultrasound										
BW	10/22 WW	SALE WT	SC	ADG	WDA	IMF	BF	REA		
82	848	1286	38.5	2.60	2.74	4.10	0.21	11.97		
CE	BW	WW	YW	MCE	MILK	MWW	MB	REA	API	TI
14.7	-2.0	74.9	112.9	6.7	21.6	59.0	0.74	0.64	150.5	87.6



# 16 KA41 3/16 SM

Black Polled  
 Bull ASA #4150115 KA41 BD: 2/12/2022

POSS MAVERICK SITZ MADISON 10477  
 POSS RAWHIDE OGRA41  
 POSS BLUEBLOOD 6502 OGRN480

365 Day Ultrasound										
BW	10/22 WW	SALE WT	SC	ADG	WDA	IMF	BF	REA		
86	904	1296	37.0	2.70	2.93	4.10	0.23	10.84		
CE	BW	WW	YW	MCE	MILK	MWW	MB	REA	API	TI
14.6	-1.2	79.9	123.6	6.1	21.6	61.5	0.63	0.56	146.2	86.7



KA41 Sells as Lot 16.

## Notes on Fertility

This year, our fertility testing and breeding soundness evaluation with Dr. Bjornstad went the best it ever has. Excellent test results and very few problems. Dr. Bjornstad commented that a 36 to 37 centimeter scrotal measurement is ideal for bulls this age. The official average for all Open Gate Bulls this year is 38.8. That makes us feel pretty good to know we are hitting the target for well developed bulls, ready to breed, and carrying high fertility across the board. This is a classic component that Simmental Influence will bring to a crossbreeding program. And if this kind of fertility is so measurably consistent in the bulls, we know it is present in the females too. You are buying a complete package of genetics for long term profitability. Another reason we are glad to stand behind our guarantee that our bulls will do their job.

Additionally, you will notice that the dams we keep in the seedstock program run the full range of ages. This year, 24 of the dams with Bull progeny are over 10 years old. That's 25% of the program being carried by highly productive and genetically relevant cows who have already far surpassed the life span of the national herd.



# CDI TRUSTEE 387F

Wide and deep and powerful, he swings back toward the foundation of Simmental performance, exceptional maternal qualities and wonderful docility. Both sons and daughters are quiet and steady. Muscle in all the right places.



CDI TRUSTEE 387F Reference Sire.

## CDI TRUSTEE 387F

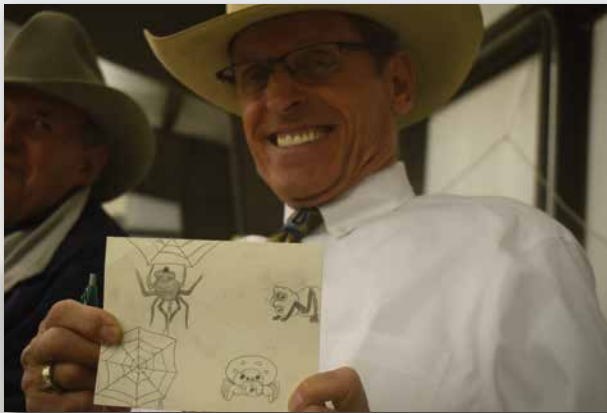
**PB SM** Bull ASA #3429754

**SIRE:** CDI REVIVAL 370D

**MGS:** CDI HOMETOWN 246A

CE	BW	WW	YW	MCE	MILK	MWW	MARB	REA	SAPI	STI
10.6	2.6	100.2	150.4	4.6	28.6	78.7	0.25	1.5	139.1	94.7

# Bulls to sire OPTIMISM!



KC972 Sells as Lot 18.

## 17 KE562 7/8 SM

Black Polled  
Bull ASA #4150089 KE562 BD: 2/1/2022

CDI REVIVAL 370D GIBBS 0601X RAISINCAIN  
CDI TRUSTEE 387F OGRE562  
CDI MISS HOMETOWN 163C OGRB604

365 Day Ultrasound										
BW	10/22 WW	SALE WT	SC	ADG	WDA	IMF	BF	REA		
87	970	1386	39.0	3.00	3.07	2.85	0.12	12.77		
CE	BW	WW	YW	MCE	MILK	MWW	MB	REA	API	TI
10.8	1.8	89.4	133.9	5.9	28.1	72.8	0.20	1.20	139.4	87.5

## 18 KC972 3/4 SM

Black Polled  
Bull ASA #4145795 KC972 BD: 2/3/2022

CDI REVIVAL 370D TSN PROTEGE Z896  
CDI TRUSTEE 387F OGRC972  
CDI MISS HOMETOWN 163C OGRZ406

365 Day Ultrasound										
BW	10/22 WW	SALE WT	SC	ADG	WDA	IMF	BF	REA		
87	1022	1446	39.0	3.60	3.24	3.33	0.13	15.70		
CE	BW	WW	YW	MCE	MILK	MWW	MB	REA	API	TI
11.4	1.5	100.0	150.6	5.5	23.9	73.9	0.23	1.13	133.6	89.3



# 19 KF828 3/4 SM

Black Polled  
Bull ASA #4150101 KF828 BD: 1/23/2022

CDI REVIVAL 370D HOOK'S EASTWOOD 30C  
CDI TRUSTEE 387F OGRF828  
CDI MISS HOMETOWN 163C OGRY891

365 Day Ultrasound										
BW	10/22 WW	SALE WT	SC	ADG	WDA	IMF	BF	REA		
95	1114	1506	40.5	3.70	3.30	3.77	0.18	13.52		
CE	BW	WW	YW	MCE	MILK	MWW	MB	REA	API	TI
11.1	2.9	105.4	158.6	5.6	30.4	83.1	0.26	1.21	128.3	92.4



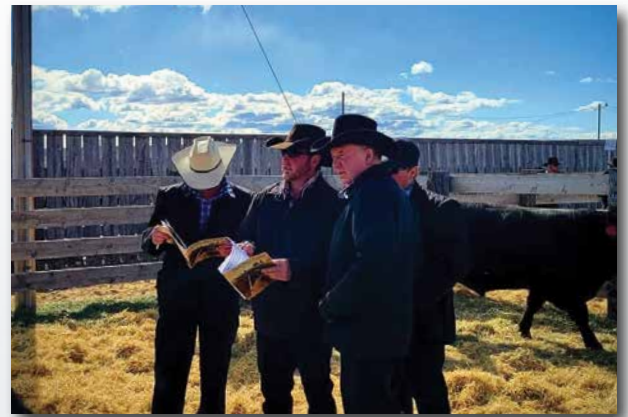
KF828 Sells as Lot 19.

# 20 KY309 3/4 SM

Black Polled  
Bull ASA #4156056 KY309 BD: 2/2/2022

CDI REVIVAL 370D HOOVER DAM  
CDI TRUSTEE 387F SVRY309  
CDI MISS HOMETOWN 163C SV L693

365 Day Ultrasound										
BW	10/22 WW	SALE WT	SC	ADG	WDA	IMF	BF	REA		
98	934	1296	39.0	3.30	2.85	2.87	0.14	13.18		
CE	BW	WW	YW	MCE	MILK	MWW	MB	REA	API	TI
10.9	0.9	77.0	118.0	6.2	25.4	63.9	0.32	1.07	135.8	80.9



# 22 KE475 3/4 SM

Black Polled  
Bull ASA #4150083 KE475 BD: 1/28/2022

CDI REVIVAL 370D TJ COWBOY UP 529B  
CDI TRUSTEE 387F OGRE475  
CDI MISS HOMETOWN 163C OGRB671

365 Day Ultrasound										
BW	10/22 WW	SALE WT	SC	ADG	WDA	IMF	BF	REA		
98	840	1306	37.5	3.30	2.84	3.31	0.15	14.70		
CE	BW	WW	YW	MCE	MILK	MWW	MB	REA	API	TI
9.0	2.3	82.7	124.8	6.0	21.5	62.8	0.36	0.92	127.8	80.6

# 23 KF740 3/4 SM

Black Polled  
Bull ASA #4145845 KF740 BD: 1/31/2022

CDI REVIVAL 370D HOOK'S EASTWOOD 30C  
CDI TRUSTEE 387F OGRF740  
CDI MISS HOMETOWN 163C OGR C870

365 Day Ultrasound										
BW	10/22 WW	SALE WT	SC	ADG	WDA	IMF	BF	REA		
90	882	1326	39.0	3.30	2.91	1.88	0.19	13.45		
CE	BW	WW	YW	MCE	MILK	MWW	MB	REA	API	TI
11.5	1.4	86.1	130.0	5.4	25.1	68.1	0.22	1.12	124.7	81.3

# 24 KE538 3/4 SM

Black Polled  
Bull ASA #4150116 KE538 BD: 1/25/2022

CDI REVIVAL 370D CONNEALY CONSENSUS  
CDI TRUSTEE 387F OGRE538  
CDI MISS HOMETOWN 163C OGRW210

365 Day Ultrasound										
BW	10/22 WW	SALE WT	SC	ADG	WDA	IMF	BF	REA		
97	910	1364	39.0	2.30	2.96	2.95	0.20	14.55		
CE	BW	WW	YW	MCE	MILK	MWW	MB	REA	API	TI
10.9	1.6	86.1	132.0	5.2	23.2	66.1	0.28	0.84	128.3	81.8



KE538 Sells as Lot 24.



KD204 Sells as Lot 25.

## 25 KD204 3/4 SM

Black Polled  
Bull ASA #4145759 KD204 BD: 2/14/2022

CDI REVIVAL 370D GW ROBUST 605Z  
CDI TRUSTEE 387F OGRD204  
CDI MISS HOMETOWN 163C OGRB663

365 Day Ultrasound										
BW	10/22 WW	SALE WT	SC	ADG	WDA	IMF	BF	REA		
90	958	1406	42.5	3.70	3.23	2.36	0.19	14.47		
CE	BW	WW	YW	MCE	MILK	MWW	MB	REA	API	TI
10.3	2.0	92.5	140.4	3.4	25.8	72.0	0.32	1.23	132.9	86.9

## 26 KE636 PB SM

Heterozygous Black Polled  
Bull ASA #4145631 KE636 BD: 1/29/2022

CDI REVIVAL 370D WS ZENITH Z55  
CDI TRUSTEE 387F OGRE636  
CDI MISS HOMETOWN 163C SVR 5687

365 Day Ultrasound										
BW	10/22 WW	SALE WT	SC	ADG	WDA	IMF	BF	REA		
100	994	1302	34.5	1.80	2.84	2.14	0.15	14.62		
CE	BW	WW	YW	MCE	MILK	MWW	MB	REA	API	TI
9.0	3.7	99.4	147.2	4.1	23.3	73.0	0.22	1.28	128.3	86.3

## 27 KD372 3/4 SM

Black Polled  
Bull ASA #4145628 KD372 BD: 2/12/2022

CDI REVIVAL 370D CONNEALY CONSENSUS 7229  
CDI TRUSTEE 387F OGRD372  
CDI MISS HOMETOWN 163C SVRW695

365 Day Ultrasound										
BW	10/22 WW	SALE WT	SC	ADG	WDA	IMF	BF	REA		
88	920	1280	39.5	2.80	2.88	3.40	0.18	14.64		
CE	BW	WW	YW	MCE	MILK	MWW	MB	REA	API	TI
12.0	0.2	83.1	122.2	5.3	23.2	64.7	0.31	0.90	134.2	82.5

## 28 KZ971 PB SM

Black Polled  
Bull ASA #4145797 KZ971 BD: 2/11/2022

CDI REVIVAL 370D CDI TRUMP FORCE 156W  
CDI TRUSTEE 387F OGRZ971  
CDI MISS HOMETOWN 163C OGRU792

365 Day Ultrasound										
BW	10/22 WW	SALE WT	SC	ADG	WDA	IMF	BF	REA		
96	918	1340	42.0	3.60	3.03	2.13	0.15	15.13		
CE	BW	WW	YW	MCE	MILK	MWW	MB	REA	API	TI
11.3	1.5	88.3	131.5	5.9	21.5	65.6	0.25	1.19	128.2	82.9

## 29 KE452 3/4 SM

Black Polled  
Bull ASA #4150099 KE452 BD: 2/12/2022

CDI REVIVAL 370D HOOKSTRINITY 9T  
CDI TRUSTEE 387F OGRE452  
CDI MISS HOMETOWN 163C OGRC907

365 Day Ultrasound										
BW	10/22 WW	SALE WT	SC	ADG	WDA	IMF	BF	REA		
85	928	1386	39.5	3.40	3.16	3.81	0.22	15.64		
CE	BW	WW	YW	MCE	MILK	MWW	MB	REA	API	TI
12.4	0.8	89.5	135.8	6.1	21.6	66.3	0.33	1.08	137.5	86.6

## 30 KD239 3/4 SM

Black Polled  
Bull ASA #4150117 KD239 BD: 2/12/2022

CDI REVIVAL 370D W/C UNITED 956Y  
CDI TRUSTEE 387F OGRD239  
CDI MISS HOMETOWN 163C OGR717

365 Day Ultrasound										
BW	10/22 WW	SALE WT	SC	ADG	WDA	IMF	BF	REA		
87	794	1226	37.5	2.80	2.74	1.68	0.18	13.14		
CE	BW	WW	YW	MCE	MILK	MWW	MB	REA	API	TI
11.2	1.0	77.5	121.6	5.9	20.9	59.7	0.22	0.84	116.5	75.7

## 31 KF997 5/8 SM

Black Polled  
Bull ASA #4156052 KF997 BD: 1/28/2022

CDI REVIVAL 370D OGRDX203  
CDI TRUSTEE 387F OGRF997  
CDI MISS HOMETOWN 163C X101

365 Day Ultrasound										
BW	10/22 WW	SALE WT	SC	ADG	WDA	IMF	BF	REA		
86	892	1306	38.5	3.10	2.84	2.84	0.17	14.60		
CE	BW	WW	YW	MCE	MILK	MWW	MB	REA	API	TI
10.9	1.4	87.1	134.5	5.7	26.2	69.7	0.30	0.96	125.4	84.6



# 32 KB677 3/4 SM

Black Polled  
Bull ASA #4150111 KB677 BD: 2/18/2022

CDI REVIVAL 370D OGRZU171  
CDI TRUSTEE 387F OGRB677  
CDI MISS HOMETOWN 163C OGRT712

365 Day Ultrasound										
BW	10/22 WW	SALE WT	SC	ADG	WDA	IMF	BF	REA		
90	882	1316	40.0	3.20	3.03	2.81	0.13	15.04		
CE	BW	WW	YW	MCE	MILK	MWW	MB	REA	API	TI
10.5	1.6	81.4	127.1	5.3	25.9	66.5	0.36	0.99	126.5	81.7



KB677 Sells as Lot 32.

# 33 KZ437 5/8 SM

Black Polled  
Bull ASA #4150135 KZ437 BD: 2/9/2022

CDI REVIVAL 370D G A R PREDESTINED  
CDI TRUSTEE 387F SVRZ437  
CDI MISS HOMETOWN 163C SVR S298

365 Day Ultrasound										
BW	10/22 WW	SALE WT	SC	ADG	WDA	IMF	BF	REA		
88	928	1302	36.0	2.70	2.92	3.01	0.27	11.89		
CE	BW	WW	YW	MCE	MILK	MWW	MB	REA	API	TI
11.1	2.0	83.8	128.1	6.5	24.1	65.9	0.47	0.86	135.7	84.4

# 34 KY895 7/8 SM

Red Polled  
Bull ASA #4145882 KY895 BD: 3/1/2022

CDI REVIVAL 370D OGR SAGELAND  
CDI TRUSTEE 387F OGRYT714  
CDI MISS HOMETOWN 163C OGRT714

365 Day Ultrasound										
BW	10/22 WW	SALE WT	SC	ADG	WDA	IMF	BF	REA		
95	770	1246	36.5	2.80	2.93	1.93	0.11	15.22		
CE	BW	WW	YW	MCE	MILK	MWW	MB	REA	API	TI
10.9	2.0	74.1	111.7	5.4	23.6	60.6	0.21	0.91	117.5	72.9

# 35 KA311 7/8 SM

Heterozygous Black Polled  
Bull ASA #4150087 KA311 BD: 3/2/2022

CDI REVIVAL 370D TNT GUNNER N208  
CDI TRUSTEE 387F OGRA311  
CDI MISS HOMETOWN 163C SVR S020

365 Day Ultrasound										
BW	10/22 WW	SALE WT	SC	ADG	WDA	IMF	BF	REA		
85	808	1206	36.5	2.90	2.82	2.30	0.12	13.13		
CE	BW	WW	YW	MCE	MILK	MWW	MB	REA	API	TI
10.4	1.8	80.2	118.4	5.9	25.3	65.4	0.10	0.99	125.0	78.3



KA311 Sells as Lot 35.

# 36 KA523 5/8 SM

Black Polled  
Bull ASA #4150098 KA523 BD: 2/14/2022

CDI REVIVAL 370D TFS BLACK ONYX 1442Y  
CDI TRUSTEE 387F A523  
CDI MISS HOMETOWN 163C X23

365 Day Ultrasound										
BW	10/22 WW	SALE WT	SC	ADG	WDA	IMF	BF	REA		
90	830	1349	39.5	3.40	3.08	1.78	0.17	12.37		
CE	BW	WW	YW	MCE	MILK	MWW	MB	REA	API	TI
11.5	0.7	73.2	111.0	6.3	27.0	63.6	0.25	0.73	121.1	74.5





KF778 Sells as Lot 37.

### 37 KF778 3/4 SM

Black Polled  
 Bull ASA #4150121 KF778 BD: 1/28/2022

CDI REVIVAL 370D MR NLC ENTREPRENEUR 1227  
 CDI TRUSTEE 387F OGRF778  
 CDI MISS HOMETOWN 163C OGRY3162

365 Day Ultrasound										
BW	10/22 WW	SALE WT	SC	ADG	WDA	IMF	BF	REA		
86	986	1406	40.0	3.50	3.09	2.98	0.18	13.80		
CE	BW	WW	YW	MCE	MILK	MWW	MB	REA	API	TI
11.9	0.7	84.3	125.9	7.0	29.1	71.2	0.28	0.99	129.8	82.6

### 38 KC110 PB SM

Black Polled  
 Bull ASA #4145809 KC110 BD: 2/20/2022

CDI REVIVAL 370D MR ISHEE CATALYST  
 CDI TRUSTEE 387F OGRC110  
 CDI MISS HOMETOWN 163C OGRY899

365 Day Ultrasound										
BW	10/22 WW	SALE WT	SC	ADG	WDA	IMF	BF	REA		
85	928	1306	39.0	3.20	3.02	2.31	0.10	14.87		
CE	BW	WW	YW	MCE	MILK	MWW	MB	REA	API	TI
11.1	1.7	82.0	120.2	6.5	26.9	67.8	0.23	1.29	132.2	83.8

### 39 KZ406 3/4 SM

Black Polled  
 Bull ASA #4020563 KZ406 BD: 2/7/2022

CDI REVIVAL 370D PVF-J 4P14 HYB ROOKIE  
 CDI TRUSTEE 387F OGRZ406  
 CDI MISS HOMETOWN 163C OGR144

365 Day Ultrasound										
BW	10/22 WW	SALE WT	SC	ADG	WDA	IMF	BF	REA		
81	970	1386	40.5	2.90	3.12	3.33	0.16	15.76		
CE	BW	WW	YW	MCE	MILK	MWW	MB	REA	API	TI
12.2	0.6	82.5	124.5	6.5	24.9	66.1	0.16	1.02	123.2	78.5

### 40 KF700 3/4 SM

Black Polled  
 Bull ASA #4163812 KF700 BD: 2/12/2022

CDI REVIVAL 370D WS ALL ABOARD B80  
 CDI TRUSTEE 387F OGRF700  
 CDI MISS HOMETOWN 163C

365 Day Ultrasound										
BW	10/22 WW	SALE WT	SC	ADG	WDA	IMF	BF	REA		
92	948	1386	38.5	3.20	3.16	2.40	0.17	14.64		
CE	BW	WW	YW	MCE	MILK	MWW	MB	REA	API	TI
11.8	1.0	90.0	139.1	5.7	25.8	70.8	0.36	1.09	129.3	90.6

### 41 KY934 3/4 SM

Black Polled  
 Bull ASA #4150104 KY934 BD: 2/18/2022

CDI REVIVAL 370D SVR W732  
 CDI TRUSTEE 387F OGRY934  
 CDI MISS HOMETOWN 163C OGRU751

365 Day Ultrasound										
BW	10/22 WW	SALE WT	SC	ADG	WDA	IMF	BF	REA		
80	986	1356	35.5	3.60	3.13	4.00	0.23	14.54		
CE	BW	WW	YW	MCE	MILK	MWW	MB	REA	API	TI
11.6	1.0	83.7	127.7	6.0	26.6	68.4	0.30	1.00	126.5	82.3

### 42 KE626 7/8 SM

Red Polled  
 Bull ASA #4163817 KE626 BD: 2/26/2022

CDI REVIVAL 370D HOOK'S BALTIC 17B  
 CDI TRUSTEE 387F OGRE626  
 CDI MISS HOMETOWN 163C OGR722

365 Day Ultrasound										
BW	10/22 WW	SALE WT	SC	ADG	WDA	IMF	BF	REA		
87	828	1296	38.5	1.90	3.04	1.92	0.13	16.37		
CE	BW	WW	YW	MCE	MILK	MWW	MB	REA	API	TI
12.6	1.1	82.9	129.3	6.1	21.0	62.4	0.21	1.06	124.9	79.5

### 43 KD252 3/4 SM

Black Polled  
 Bull ASA #4150095 KD252 BD: 2/12/2022

CDI REVIVAL 370D W/C UNITED 956Y  
 CDI TRUSTEE 387F OGRD252  
 CDI MISS HOMETOWN 163C OGRW211

365 Day Ultrasound										
BW	10/22 WW	SALE WT	SC	ADG	WDA	IMF	BF	REA		
83	904	1282	39.0	2.60	2.89	2.13	0.14	14.04		
CE	BW	WW	YW	MCE	MILK	MWW	MB	REA	API	TI
11.1	1.5	87.7	134.8	6.1	22.6	66.5	0.21	1.00	133.3	84.7



# 44 KF998 3/4 SM

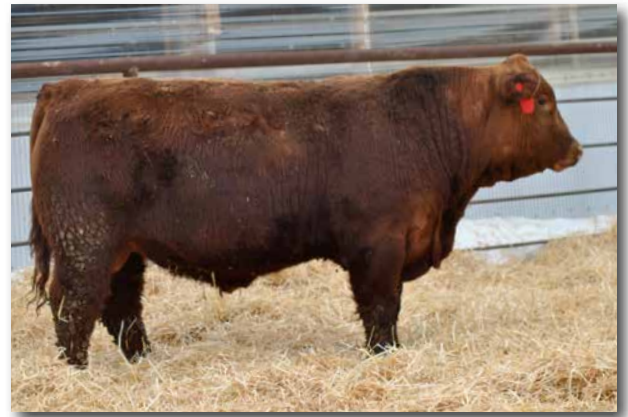
Red Polled  
Bull ASA #4150118 KF998 BD: 1/29/2022

CDI REVIVAL 370D OGRDX203  
CDI TRUSTEE 387F F998  
CDI MISS HOMETOWN 163C OGRA820

365 Day Ultrasound

BW	10/22 WW	SALE WT	SC	ADG	WDA	IMF	BF	REA
86	948	1346	35.5	3.10	2.95	2.10	0.20	14.02

CE	BW	WW	YW	MCE	MILK	MWW	MB	REA	API	TI
10.1	2.1	93.1	138.5	5.4	31.2	77.7	0.23	1.13	125.2	85.1



KF998 Sells as Lot 44.

# 45 KY610 1/2 SM

Red Polled  
Bull ASA #4145729 KY610 BD: 1/19/2022

FRITZ ANVIL 747C CDI TRUMP FORCE 156W  
FRITZ ANVIL 0259 SVRY610  
FRITZ EMULOUS 398A SPRING VALLEY M686

365 Day Ultrasound

BW	10/22 WW	SALE WT	SC	ADG	WDA	IMF	BF	REA
94	1000	1350	40.5	3.40	2.89	1.62	0.10	14.66

CE	BW	WW	YW	MCE	MILK	MWW	MB	REA	API	TI
10.3	0.8	84.4	124.3	6.8	23.9	66.1	0.25	0.66	126.5	79.9



KD522 Sells as Lot 46.



KA418 Sells as Lot 47.

# 47 KA418 1/2 SM

Red Polled  
Bull ASA #4145904 KA418 BD: 2/17/2022

FRITZ ANVIL 747C WS BEEF MAKER R13  
FRITZ ANVIL 0259 TAYLORA418  
FRITZ EMULOUS 398A TAYLORY355

365 Day Ultrasound

BW	10/22 WW	SALE WT	SC	ADG	WDA	IMF	BF	REA
88	926	1250	38.5	2.90	2.84	2.54	0.21	13.22

CE	BW	WW	YW	MCE	MILK	MWW	MB	REA	API	TI
10.4	0.9	79.9	120.2	6.7	28.3	68.2	0.33	0.69	134.0	79.7

# 46 KD522 1/2 SM

Red Polled  
Bull ASA #4145929 KD522 BD: 1/22/2022

FRITZ ANVIL 747C OLF OTIS Y43  
FRITZ ANVIL 0259 TAYLORD522  
FRITZ EMULOUS 398A TAYLORZ392

365 Day Ultrasound

BW	10/22 WW	SALE WT	SC	ADG	WDA	IMF	BF	REA
83	956	1262	38.5	3.10	2.69	2.87	0.20	12.70

CE	BW	WW	YW	MCE	MILK	MWW	MB	REA	API	TI
12.6	0.4	81.8	126.5	8.9	28.4	69.3	0.16	0.68	126.1	76.2

# 48 KY910 1/2 SM

Red Polled  
Bull ASA #4145851 KY910 BD: 2/23/2022

FRITZ ANVIL 747C SVRW909  
FRITZ ANVIL 0259 OGRY910  
FRITZ EMULOUS 398A OGRS660

365 Day Ultrasound

BW	10/22 WW	SALE WT	SC	ADG	WDA	IMF	BF	REA
91	806	1226	40.5	2.80	2.82	1.88	0.13	14.02

CE	BW	WW	YW	MCE	MILK	MWW	MB	REA	API	TI
9.3	1.2	66.7	101.5	6.4	25.3	58.6	0.30	0.49	114.7	68.2

# DEER VALLEY GROWTH FUND

A fresh pedigree for our program that springs from the legendary Basin Payweight. He brings a slight advantage in Calving Ease with extraordinary advantage in Weaning Weight and Carcass Value, and a unique physical style of length and smooth structure. The bulls he sired for us show tremendous capacity for gain and have brought forward some solid marbling.



DEER VALLEY GROWTH FUND Reference Sire.

## DEER VALLEY GROWTH FUND

**PB AN** Bull ASA #3681957

**SIRE:** BASIN PAYWEIGHT 1682

**MGS:** PLATTEMERE WEIGH UP K360

CE	BW	WW	YW	MCE	MILK	MWW	MARB	REA	\$API	\$TI
14.5	-1	109.7	191.3	12.4	20.4	75.3	0.42	0.4	137.2	92.1

# Bulls to sire OPTIMISM!



KH485 Sells as Lot 49.

## 49 KH485 1/2 SM

Black Polled  
Bull ASA #4145933 KH485 BD: 1/8/2022

BASIN PAYWEIGHT 1682 WS PROCLAMATION E202  
DEER VALLEY GROWTH FUND H485  
DEER VALLEY RITA 36113 OGRB020

365 Day Ultrasound								
BW	10/22 WW	SALE WT	SC	ADG	WDA	IMF	BF	REA
78	1074	1416	37.5	3.40	2.97	3.06	0.14	11.98

CE	BW	WW	YW	MCE	MILK	MWW	MB	REA	API	TI
14.3	-0.5	107.8	172.0	9.7	29.4	83.3	0.38	0.65	148.4	97.9

## 50 KG218 1/4 SM

Black Polled  
Bull ASA #4145876 KG218 BD: 1/25/2022

BASIN PAYWEIGHT 1682 GIBBS 0601X RAISINCAIN  
DEER VALLEY GROWTH FUND G218  
DEER VALLEY RITA 36113 OGRA546

365 Day Ultrasound								
BW	10/22 WW	SALE WT	SC	ADG	WDA	IMF	BF	REA
98	930	1356	38.5	3.00	2.94	2.70	0.23	13.85

CE	BW	WW	YW	MCE	MILK	MWW	MB	REA	API	TI
10.5	1.3	93.3	154.2	8.3	23.3	69.9	0.34	0.53	129.4	85.1

## 51 KH371 1/2 SM

Black Polled  
Bull ASA #4150084 KH371 BD: 1/12/2022

BASIN PAYWEIGHT 1682  
DEER VALLEY GROWTH FUND H371  
DEER VALLEY RITA 36113 OGRE574

365 Day Ultrasound								
BW	10/22 WW	SALE WT	SC	ADG	WDA	IMF	BF	REA
96	986	1436	32.5	3.30	3.05	3.39	0.28	13.94

CE	BW	WW	YW	MCE	MILK	MWW	MB	REA	API	TI
11.1	1.7	97.9	159.0	8.6	23.3	72.2	0.26	0.64	118.8	85.8



**52 KH374 1/2 SM**  
 Black Polled  
 Bull ASA #4145921 KH374 BD: 1/14/2022

BASIN PAYWEIGHT 1682  
 DEER VALLEY GROWTH FUND H374  
 DEER VALLEY RITA 36113 OGRE516

365 Day Ultrasound										
BW	10/22 WW	SALE WT	SC	ADG	WDA	IMF	BF	REA		
90	970	1366	37.0	2.70	2.89	2.48	0.14	12.78		
CE	BW	WW	YW	MCE	MILK	MWW	MB	REA	API	TI
11.9	0.9	96.7	155.7	9.2	23.5	71.9	0.28	0.53	124.8	86.3

**53 KH494 3/8 SM**  
 Black Polled  
 Bull ASA #4150093 KH494 BD: 1/7/2022

BASIN PAYWEIGHT 1682 HOOK'S CAPITALIST 37C  
 DEER VALLEY GROWTH FUND H494  
 DEER VALLEY RITA 36113 OGRE641

365 Day Ultrasound										
BW	10/22 WW	SALE WT	SC	ADG	WDA	IMF	BF	REA		
85	980	1342	37.5	3.10	2.78	1.92	0.13	13.76		
CE	BW	WW	YW	MCE	MILK	MWW	MB	REA	API	TI
13.3	-0.2	96.0	157.8	9.6	24.2	72.2	0.49	0.57	147.4	92.6

**54 KH398 3/8 SM**  
 Black Polled  
 Bull ASA #4150106 KH398 BD: 1/13/2022

BASIN PAYWEIGHT 1682 HOOK'S CAPITALIST 37C  
 DEER VALLEY GROWTH FUND H398  
 DEER VALLEY RITA 36113 OGRE519

365 Day Ultrasound										
BW	10/22 WW	SALE WT	SC	ADG	WDA	IMF	BF	REA		
87	1090	1356	39.0	2.80	2.86	5.07	0.22	13.56		
CE	BW	WW	YW	MCE	MILK	MWW	MB	REA	API	TI
13.6	0.1	105.1	174.5	10.0	24.4	76.9	0.46	0.62	148.4	97.3

**55 KH375 1/2 SM**  
 Black Polled  
 Bull ASA #4150088 KH375 BD: 1/8/2022

BASIN PAYWEIGHT 1682  
 DEER VALLEY GROWTH FUND H375  
 DEER VALLEY RITA 36113 OGRD380

365 Day Ultrasound										
BW	10/22 WW	SALE WT	SC	ADG	WDA	IMF	BF	REA		
80	934	1451	39.5	3.40	3.05	3.37	0.25	13.28		
CE	BW	WW	YW	MCE	MILK	MWW	MB	REA	API	TI
12.7	-0.3	90.9	146.8	9.1	23.2	68.6	0.28	0.55	125.2	84.4

**56 KD229 5/16 SM**  
 Black Polled  
 Bull ASA #4145779 KD229 BD: 2/9/2022

BASIN PAYWEIGHT 1682 W/C UNITED 956Y  
 DEER VALLEY GROWTH FUND OGRD229  
 DEER VALLEY RITA 36113 OGRW850

365 Day Ultrasound										
BW	10/22 WW	SALE WT	SC	ADG	WDA	IMF	BF	REA		
85	890	1276	34.0	3.40	2.85	3.38	0.23	14.19		
CE	BW	WW	YW	MCE	MILK	MWW	MB	REA	API	TI
13.2	-0.4	90.5	152.4	9.9	16.3	61.6	0.32	0.52	133.4	84.7

**57 KX735 1/2 SM**  
 Black Polled  
 Bull ASA #4145826 KX735 BD: 2/3/2022

BASIN PAYWEIGHT 1682 BLACK SHAMROCK E157  
 DEER VALLEY GROWTH FUND OGRX735  
 DEER VALLEY RITA 36113 OGRU802

365 Day Ultrasound										
BW	10/22 WW	SALE WT	SC	ADG	WDA	IMF	BF	REA		
80	926	1336	37.5	3.30	2.96	3.09	0.28	13.70		
CE	BW	WW	YW	MCE	MILK	MWW	MB	REA	API	TI
12.2	1.2	89.4	152.5	10.3	22.5	67.2	0.27	0.61	126.6	81.8

**58 KF922 1/4 SM**  
 Black Polled  
 Bull ASA #4150094 KF922 BD: 2/1/2022

BASIN PAYWEIGHT 1682  
 DEER VALLEY GROWTH FUND OGRF922  
 DEER VALLEY RITA 36113 OGRX661

365 Day Ultrasound										
BW	10/22 WW	SALE WT	SC	ADG	WDA	IMF	BF	REA		
93	976	1381	38.0	3.30	3.06	3.46	0.23	11.97		
CE	BW	WW	YW	MCE	MILK	MWW	MB	REA	API	TI
12.0	0.8	90.5	148.0	8.5	25.0	70.2	0.26	0.50	114.4	82.3

**59 KC129 3/8 SM**  
 Black Polled  
 Bull ASA #4145648 KC129 BD: 2/9/2022

BASIN PAYWEIGHT 1682 OGRYT016  
 DEER VALLEY GROWTH FUND OGRC129  
 DEER VALLEY RITA 36113 SVR 5695

365 Day Ultrasound										
BW	10/22 WW	SALE WT	SC	ADG	WDA	IMF	BF	REA		
82	756	1156	36.0	3.10	2.54	2.71	0.22	12.49		
CE	BW	WW	YW	MCE	MILK	MWW	MB	REA	API	TI
12.2	0.0	80.2	134.9	9.2	14.5	54.5	0.28	0.38	130.8	76.5

**60 KZ358 1/4 SM**

Black Polled  
Bull ASA #4150143 KZ358 BD: 2/7/2022

BASIN PAYWEIGHT 1682 GW PREDESTINED 701T  
DEER VALLEY GROWTH FUND SVRZ358  
DEER VALLEY RITA 36113 SVRX298

365 Day Ultrasound										
BW	10/22 WW	SALE WT	SC	ADG	WDA	IMF	BF	REA		
81	1004	1356	38.0	3.40	3.04	3.82	0.27	13.56		
CE	BW	WW	YW	MCE	MILK	MWW	MB	REA	API	TI
14.8	-2.1	86.6	144.4	10.5	18.3	61.5	0.48	0.46	149.4	88.4

**61 KC865 3/8 SM**

Black Polled  
Bull ASA #4145742 KC865 BD: 2/6/2022

BASIN PAYWEIGHT 1682 GW PREMIUM BEEF 021TS  
DEER VALLEY GROWTH FUND OGRC865  
DEER VALLEY RITA 36113 OGRA544

365 Day Ultrasound										
BW	10/22 WW	SALE WT	SC	ADG	WDA	IMF	BF	REA		
82	934	1338	37.0	3.20	2.99	3.00	0.25	15.15		
CE	BW	WW	YW	MCE	MILK	MWW	MB	REA	API	TI
15.2	-1.5	86.7	144.8	10.4	19.7	63.0	0.39	0.51	141.3	86.1



KG299 Sells as Lot 62.

**62 KG299 1/2 SM**

Black Polled  
Bull ASA #4150112 KG299 BD: 1/12/2022

BASIN PAYWEIGHT 1682  
DEER VALLEY GROWTH FUND G299  
DEER VALLEY RITA 36113 OGRW8682

365 Day Ultrasound										
BW	10/22 WW	SALE WT	SC	ADG	WDA	IMF	BF	REA		
90	928	1346	36.5	3.50	2.83	3.39	0.16	13.34		
CE	BW	WW	YW	MCE	MILK	MWW	MB	REA	API	TI
13.4	-0.2	86.2	140.8	9.4	18.9	61.9	0.32	0.46	129.7	84.3



Please visit our website  
[opengateranch.com](http://opengateranch.com) or  
[northernlivestockvideo.com](http://northernlivestockvideo.com)  
to view videos of the  
bull offering.





# 63 KY353 7/16 SM

Heterozygous Black Polled  
 Bull ASA #4145908 KY353 BD: 2/13/2022

S A V RENOWN 3439 TNT TOP GUN R244  
**S A V RENEW 8132** TAYLORY353  
 S A V BLACKCAP MAY 4593 TAYLORW305

365 Day Ultrasound										
BW	10/22 WW	SALE WT	SC	ADG	WDA	IMF	BF	REA		
95	918	1346	42.0	3.50	3.07	2.00	0.21	15.66		
CE	BW	WW	YW	MCE	MILK	MWW	MB	REA	API	TI
5.6	3.5	91.5	142.5	4.9	23.6	69.3	0.15	0.69	105.9	75.9



S A V RENEW 8132 Sells as Lots 63-65.

# 64 KB685 7/16 SM

Black Polled  
 Bull ASA #4150105 KB685 BD: 3/3/2022

S A V RENOWN 3439 GIBBS 0601X RAISINCAIN  
**S A V RENEW 8132** OGRB685  
 S A V BLACKCAP MAY 4593 SVRX203

365 Day Ultrasound										
BW	10/22 WW	SALE WT	SC	ADG	WDA	IMF	BF	REA		
96	1012	1416	41.0	3.40	3.41	3.13	0.20	14.35		
CE	BW	WW	YW	MCE	MILK	MWW	MB	REA	API	TI
6.8	2.3	104.3	157.8	4.5	22.0	74.1	0.26	1.00	121.5	88.2



KB685 Sells as Lot 64.

# 65 KZ533 3/8 SM

Black Polled  
 Bull ASA #4150114 KZ533 BD: 2/11/2022

S A V RENOWN 3439 CDI TRUMP FORCE 156W  
**S A V RENEW 8132** OGRZ533  
 S A V BLACKCAP MAY 4593 SPRING VALLEY P109

365 Day Ultrasound										
BW	10/22 WW	SALE WT	SC	ADG	WDA	IMF	BF	REA		
100	926	1446	38.5	3.70	3.31	2.40	0.18	13.43		
CE	BW	WW	YW	MCE	MILK	MWW	MB	REA	API	TI
6.8	2.7	93.2	143.7	4.7	18.9	65.4	0.31	0.79	117.6	81.5



# 66 KD243 1/2 SM

Black Polled  
 Bull ASA #4150109 KD243 BD: 2/24/2022

S A V RESOURCE 1441 OLF OTIS Y43  
**S A V TERRITORY 7225** OGRD243  
 S A V EMBLYNETTE 3293 OGRA568

365 Day Ultrasound										
BW	10/22 WW	SALE WT	SC	ADG	WDA	IMF	BF	REA		
90	1002	1426	41.0	3.70	3.37	1.97	0.20	14.14		
CE	BW	WW	YW	MCE	MILK	MWW	MB	REA	API	TI
12.1	1.3	98.5	153.7	6.2	20.6	69.8	0.25	0.81	131.3	85.9



S A V TERRITORY 7225 Sire of Lots 66-71.

OPEN GATE RANCH

**67 KE479 1/4 SM**

Black Polled  
Bull ASA #4145867 KE479 BD: 2/9/2022

S A V RESOURCE 1441 TJ COWBOY UP 529B  
S A V TERRITORY 7225 OGRE479  
S A V EMBLYNETTE 3293 OGRB767

365 Day Ultrasound										
BW	10/22 WW	SALE WT	SC	ADG	WDA	IMF	BF	REA		
98	968	1346	39.5	3.20	3.03	1.83	0.23	15.99		
CE	BW	WW	YW	MCE	MILK	MWW	MB	REA	API	TI
9.1	2.4	91.1	144.3	3.9	16.5	62.0	0.38	0.57	130.0	82.2

**68 KA550 5/16 SM**

Black Polled  
Bull ASA #4145890 KA550 BD: 2/1/2022

S A V RESOURCE 1441 HOOK'S INFINITI 10U  
S A V TERRITORY 7225 OGRA550  
S A V EMBLYNETTE 3293 SVRX210

365 Day Ultrasound										
BW	10/22 WW	SALE WT	SC	ADG	WDA	IMF	BF	REA		
90	864	1226	38.0	3.20	2.67	3.69	0.17	11.37		
CE	BW	WW	YW	MCE	MILK	MWW	MB	REA	API	TI
9.7	1.6	82.1	133.7	3.9	16.6	57.6	0.43	0.63	130.4	79.5

**69 KF739 3/8 SM**

Black Polled  
Bull ASA #4145778 KF739 BD: 2/23/2022

S A V RESOURCE 1441 OGRDB615  
S A V TERRITORY 7225 OGRF739  
S A V EMBLYNETTE 3293 OGR907

365 Day Ultrasound										
BW	10/22 WW	SALE WT	SC	ADG	WDA	IMF	BF	REA		
82	854	1246	37.5	2.90	2.88	3.38	0.29	12.92		
CE	BW	WW	YW	MCE	MILK	MWW	MB	REA	API	TI
12.0	-0.2	85.4	137.7	5.1	15.0	57.6	0.45	0.59	137.7	84.0

**70 KZ959 1/2 SM**

Heterozygous Black Polled  
Bull ASA #4150091 KZ959 BD: 1/22/2022

S A V RESOURCE 1441 COI TRUMP FORCE 156W  
S A V TERRITORY 7225 OGRZ959  
S A V EMBLYNETTE 3293 OGRW830

365 Day Ultrasound										
BW	10/22 WW	SALE WT	SC	ADG	WDA	IMF	BF	REA		
87	974	1426	41.0	3.40	3.10	2.37	0.19	15.30		
CE	BW	WW	YW	MCE	MILK	MWW	MB	REA	API	TI
11.4	0.8	89.6	139.6	5.0	16.2	60.9	0.31	0.89	124.8	82.6

**71 KF880 1/2 SM**

Black Polled  
Bull ASA #4145629 KF880 BD: 2/1/2022

S A V RESOURCE 1441 SVRW909  
S A V TERRITORY 7225 OGRF880  
S A V EMBLYNETTE 3293 SVRX591

365 Day Ultrasound										
BW	10/22 WW	SALE WT	SC	ADG	WDA	IMF	BF	REA		
87	920	1306	38.5	3.20	2.87	1.63	0.21	12.97		
CE	BW	WW	YW	MCE	MILK	MWW	MB	REA	API	TI
10.7	0.3	86.8	131.2	4.8	21.8	65.1	0.34	0.73	128.6	82.1

**72 KG125 7/8 SM**

Black Polled  
Bull ASA #4145824 KG125 BD: 1/23/2022

CCR WIDE RANGE 9005A OLF OTIS Y43  
GIBBS 7382E BROAD RANGE G125  
SSF BLK LOUISE Y534 OGRE481

365 Day Ultrasound										
BW	10/22 WW	SALE WT	SC	ADG	WDA	IMF	BF	REA		
95	1006	1436	40.5	3.20	3.13	2.97	0.24	13.82		
CE	BW	WW	YW	MCE	MILK	MWW	MB	REA	API	TI
13.0	0.4	96.4	152.6	9.1	24.5	72.6	0.13	1.05	135.7	86.2



GIBBS 7382E BROAD RANGE Sire of Lots 72-74.

**73 KG120 PB SM**

Black Polled  
Bull ASA #4145877 KG120 BD: 1/28/2022

CCR WIDE RANGE 9005A OLF OTIS Y43  
GIBBS 7382E BROAD RANGE G120  
SSF BLK LOUISE Y534 OGRE506

365 Day Ultrasound										
BW	10/22 WW	SALE WT	SC	ADG	WDA	IMF	BF	REA		
87	1096	1286	40.0	2.60	2.79	1.88	0.12	13.00		
CE	BW	WW	YW	MCE	MILK	MWW	MB	REA	API	TI
14.5	0.5	104.9	163.7	9.8	26.9	79.3	0.11	1.24	135.7	91.4



# 74 KA290 7/8 SM

Black Polled  
Bull ASA #4150085 KA290 BD: 2/13/2022

CCR WIDE RANGE 9005A TRIPLE C SINGLE TARY S3H  
GIBBS 7382E BROAD RANGE OGRA290  
SSF BLK LOUISE Y534 OGRW859

365 Day Ultrasound										
BW	10/22 WW	SALE WT	SC	ADG	WDA	IMF	BF	REA		
90	932	1406	39.0	3.40	3.22	2.11	0.15	14.86		
CE	BW	WW	YW	MCE	MILK	MWW	MB	REA	API	TI
11.6	0.8	85.1	133.9	7.0	20.5	63.0	0.30	1.07	133.3	82.6

# 76 KD373 5/8 SM

Black Polled  
Bull ASA #4150103 KD373 BD: 2/27/2022

MR NLC UPGRADE U8676 OLF OTIS Y43  
TJ MAIN EVENT 503B OGRD373  
TJ MISS NEW DAY U14 OGRT727

365 Day Ultrasound										
BW	10/22 WW	SALE WT	SC	ADG	WDA	IMF	BF	REA		
82	852	1256	38.5	2.60	2.94	2.96	0.22	11.58		
CE	BW	WW	YW	MCE	MILK	MWW	MB	REA	API	TI
14.1	-0.7	81.3	127.3	6.5	24.1	64.7	0.10	0.82	124.3	77.7

# 78 KF806 1/2 SM

Black Polled  
Bull ASA #4145760 KF806 BD: 1/23/2022

MUSGRAVE BIG SKY HSR RED MAGNUM C708  
BOBCAT BLUE SKY OGRF806  
BOBCAT LASS 411 OGRB744

365 Day Ultrasound										
BW	10/22 WW	SALE WT	SC	ADG	WDA	IMF	BF	REA		
91	880	1282	40.5	3.60	2.75	6.86	0.23	9.62		
CE	BW	WW	YW	MCE	MILK	MWW	MB	REA	API	TI
14.3	1.0	87.1	139.9	10.3	17.1	60.6	0.52	0.69	138.8	86.4

# 79 KB664 3/8 SM

Black Polled  
Bull ASA #4145661 KB664 BD: 1/26/2022

MUSGRAVE BIG SKY OGRZU171  
BOBCAT BLUE SKY OGRB664  
BOBCAT LASS 411 SVR U687

365 Day Ultrasound										
BW	10/22 WW	SALE WT	SC	ADG	WDA	IMF	BF	REA		
87	966	1396	41.0	3.60	3.05	4.73	0.29	12.87		
CE	BW	WW	YW	MCE	MILK	MWW	MB	REA	API	TI
14.6	-0.3	81.8	131.1	9.3	21.3	62.2	0.64	0.62	147.1	87.9

# 80 KF800 PB SM

Black Polled  
Bull ASA #4145739 KF800 BD: 2/1/2022

NF TRUMP S582 HSR RED MAGNUM C708  
CDI TRUMP FORCE 156W TAYLORF800  
CDI MS SHEAR FORCE 53P OGRB712

365 Day Ultrasound										
BW	10/22 WW	SALE WT	SC	ADG	WDA	IMF	BF	REA		
81	984	1284	40.5	3.60	2.81	2.38	0.16	15.77		
CE	BW	WW	YW	MCE	MILK	MWW	MB	REA	API	TI
12.9	-0.3	94.8	144.5	7.8	21.1	68.4	0.17	1.30	143.9	92.0

# 81 KD499 1/2 SM

Black Polled  
Bull ASA #4145730 KD499 BD: 1/28/2022

MYTTY IN FOCUS OLF OTIS Y43  
W H S LIMELIGHT 64V TAYLORD499  
W H S PREDESTINED LASS 77T TAYLORB442

365 Day Ultrasound										
BW	10/22 WW	SALE WT	SC	ADG	WDA	IMF	BF	REA		
81	956	1306	37.5	3.10	2.84	5.43	0.23	12.50		
CE	BW	WW	YW	MCE	MILK	MWW	MB	REA	API	TI
16.5	-1.2	79.0	130.9	11.6	22.1	61.5	0.50	0.74	143.8	85.0



OPEN GATE RANCH

**82 KB442 3/8 SM**

Black Polled  
Bull ASA #4145956 KB442 BD: 1/26/2022

MYTTY IN FOCUS OGRZU171  
W H S LIMELIGHT 64V TAYLORB442  
W H S PREDESTINED LASS 77T TAYLORM063

365 Day Ultrasound										
BW	10/22 WW	SALE WT	SC	ADG	WDA	IMF	BF	REA		
89	906	1406	39.5	3.10	3.08	2.79	0.22	13.77		
CE	BW	WW	YW	MCE	MILK	MWW	MB	REA	API	TI
13.2	0.0	72.3	119.3	8.6	21.9	58.0	0.69	0.65	137.7	83.5

**83 KZ390 7/16 SM**

Black Polled  
Bull ASA #4145879 KZ390 BD: 1/30/2022

MYTTY IN FOCUS WS BEEF MAKER R13  
W H S LIMELIGHT 64V TAYLORZ390  
W H S PREDESTINED LASS 77T TAYLORL180

365 Day Ultrasound										
BW	10/22 WW	SALE WT	SC	ADG	WDA	IMF	BF	REA		
84	966	1446	38.5	3.10	3.21	3.66	0.24	14.03		
CE	BW	WW	YW	MCE	MILK	MWW	MB	REA	API	TI
13.9	0.4	76.5	121.5	9.0	23.8	62.0	0.60	0.85	139.2	83.6

**84 KH736 3/4 SM**

Black Polled  
Bull ASA #4145950 KH736 BD: 1/29/2022

CCR COWBOY CUT 5048Z SHSF FREIGHTLINER D10  
WS PROCLAMATION E202 TAYLOR H736  
WS MISS SUGAR C4 TAYLORB443

365 Day Ultrasound										
BW	10/22 WW	SALE WT	SC	ADG	WDA	IMF	BF	REA		
84	928	1256	38.0	3.40	2.72	2.60	0.11	11.92		
CE	BW	WW	YW	MCE	MILK	MWW	MB	REA	API	TI
11.3	1.3	97.5	148.2	7.6	28.8	77.4	0.47	0.95	151.8	94.0

**85 KY30 3/4 SM**

Black Polled  
Bull ASA #4145627 KY30 BD: 2/10/2022

LFE GOTHAM 819Y CDI TRUMP FORCE 156W  
LFE THE RIDDLER 323B SVRY30  
LFE BS CHARO 23Y SVR U119

365 Day Ultrasound										
BW	10/22 WW	SALE WT	SC	ADG	WDA	IMF	BF	REA		
98	836	1346	36.0	3.20	3.04	1.72	0.10	14.21		
CE	BW	WW	YW	MCE	MILK	MWW	MB	REA	API	TI
6.7	3.6	89.7	143.5	5.7	21.7	66.5	0.22	0.95	119.8	79.8

**87 KD387 7/8 SM**

Black Polled  
Bull ASA #4150120 KD387 BD: 2/11/2022

LFE MCDAVID 413C GW LUCKY MAN 644N  
SPRINGCREEK TESLA 6E D387  
SPRINGCREEK MISTRESS 17B OGRY608

365 Day Ultrasound										
BW	10/22 WW	SALE WT	SC	ADG	WDA	IMF	BF	REA		
90	892	1326	38.0	2.90	3.00	2.42	0.18	14.13		
CE	BW	WW	YW	MCE	MILK	MWW	MB	REA	API	TI
6.9	4.0	88.7	139.3	4.9	26.3	70.6	0.16	0.83	118.7	77.2

**90 KE571 3/4 SM**

Heterozygous Black Polled  
Bull ASA #4145936 KE571 BD: 2/13/2022

LFE MCDAVID 413C WS ZENITH Z55  
SPRINGCREEK TESLA 6E OGRE571  
SPRINGCREEK MISTRESS 17B OGRA574

365 Day Ultrasound										
BW	10/22 WW	SALE WT	SC	ADG	WDA	IMF	BF	REA		
85	866	1316	38.0	3.20	2.99	2.62	0.21	14.76		
CE	BW	WW	YW	MCE	MILK	MWW	MB	REA	API	TI
7.8	2.6	84.6	131.7	4.8	21.3	63.6	0.19	0.91	119.2	76.8

**91 KZ383 5/8 SM**

Black Polled  
Bull ASA #4156049 KZ383 BD: 1/30/2022

LFE MCDAVID 413C PVF-J 4P14 HYB ROOKIE  
SPRINGCREEK TESLA 6E OGRZ383D  
SPRINGCREEK MISTRESS 17B SVRW212

365 Day Ultrasound										
BW	10/22 WW	SALE WT	SC	ADG	WDA	IMF	BF	REA		
98	908	1316	40.0	3.00	2.88	2.90	0.16	15.33		
CE	BW	WW	YW	MCE	MILK	MWW	MB	REA	API	TI
6.2	4.1	85.0	134.6	3.7	22.0	64.4	0.22	0.80	112.6	75.4

**92 KA299 3/4 SM**

Black Polled  
Bull ASA #4150096 KA299 BD: 3/1/2022

LFE MCDAVID 413C TRIPLE C SINGLETARY S3H  
SPRINGCREEK TESLA 6E OGRA299  
SPRINGCREEK MISTRESS 17B OGRR610

365 Day Ultrasound										
BW	10/22 WW	SALE WT	SC	ADG	WDA	IMF	BF	REA		
98	898	1346	37.5	3.00	3.20	2.26	0.16	14.32		
CE	BW	WW	YW	MCE	MILK	MWW	MB	REA	API	TI
6.8	3.6	84.6	133.8	3.7	25.1	67.4	0.30	0.93	120.8	78.6



# 93 KA38 5/8 SM

Black Polled  
Bull ASA #4150107 KA38 BD: 2/18/2022

LFE MCDAVID 413C GARDENS WAVE  
SPRINGCREEK TESLA 6E OGRA38  
SPRINGCREEK MISTRESS 17B OGRY22

365 Day Ultrasound										
BW	10/22 WW	SALE WT	SC	ADG	WDA	IMF	BF	REA		
90	928	1226	39.0	3.30	2.79	1.50	0.11	12.84		
CE	BW	WW	YW	MCE	MILK	MWW	MB	REA	API	TI
6.4	4.2	83.9	129.7	3.9	23.2	65.1	0.38	0.85	126.6	80.7

# 94 KB708 9/16 SM

Black Polled  
Bull ASA #4145931 KB708 BD: 2/9/2022

LFE MCDAVID 413C OGRZU171  
SPRINGCREEK TESLA 6E OGRB708  
SPRINGCREEK MISTRESS 17B OGRW825

365 Day Ultrasound										
BW	10/22 WW	SALE WT	SC	ADG	WDA	IMF	BF	REA		
85	884	1396	39.5	3.50	3.16	2.93	0.17	13.19		
CE	BW	WW	YW	MCE	MILK	MWW	MB	REA	API	TI
7.2	2.6	82.7	132.4	4.3	20.4	61.7	0.33	0.79	127.0	78.6

# 95 KZ992 3/4 SM

Black Polled  
Bull ASA #4145792 KZ992 BD: 2/16/2022

LFE MCDAVID 413C OGR SAGELAND  
SPRINGCREEK TESLA 6E OGRZ992  
SPRINGCREEK MISTRESS 17B OGRRS87

365 Day Ultrasound										
BW	10/22 WW	SALE WT	SC	ADG	WDA	IMF	BF	REA		
95	852	1286	39.5	2.80	2.93	2.76	0.11	12.71		
CE	BW	WW	YW	MCE	MILK	MWW	MB	REA	API	TI
6.7	3.6	78.9	117.9	4.2	22.4	61.7	0.17	0.77	111.1	71.2



KZ992 Sells as Lot 95.

# 96 KA367 3/4 SM

Black Polled  
Bull ASA #4150097 KA367 BD: 2/13/2022

LFE MCDAVID 413C OGRBOSS  
SPRINGCREEK TESLA 6E OGRA367  
SPRINGCREEK MISTRESS 17B OGRY010

365 Day Ultrasound										
BW	10/22 WW	SALE WT	SC	ADG	WDA	IMF	BF	REA		
96	1046	1296	38.5	3.30	2.93	0.00	0.18	11.36		
CE	BW	WW	YW	MCE	MILK	MWW	MB	REA	API	TI
4.9	5.1	93.8	143.0	3.0	24.3	71.1	0.24	0.90	112.5	80.0

# 98 JA590 3/8 SM

Heterozygous Black Polled  
Bull ASA #4143668 JA590 BD: 10/3/2021

S A V TERRITORY 7225 GW PREDESTINED 701T  
OPEN GATE HOBBS OGRA590  
OGRY891 SVR U295

365 Day Ultrasound										
BW	10/22 WW	SALE WT	SC	ADG	WDA	IMF	BF	REA		
90	1255	1646	44.0	3.00	2.86	2.39	0.19	14.72		
CE	BW	WW	YW	MCE	MILK	MWW	MB	REA	API	TI
11.4	0.5	84.7	134.1	6.0	21.7	64.0	0.56	0.51	132.7	86.2

# 99 JE531 1/2 SM

Black Polled  
Bull ASA #4163814 JE531 BD: 10/6/2021

S A V TERRITORY 7225 SVRW909  
OPEN GATE HOBBS OGRE531  
OGRY891 OGRA525

365 Day Ultrasound										
BW	10/22 WW	SALE WT	SC	ADG	WDA	IMF	BF	REA		
84	1355	1596	39.0	2.90	2.77	0.00	0.26	14.27		
CE	BW	WW	YW	MCE	MILK	MWW	MB	REA	API	TI
8.9	2.4	91.1	140.0	3.9	23.0	68.5	0.38	0.65	114.6	83.2



JE531 Sells as Lot 99.

OPEN GATE RANCH

**100 JC843** 5/8 SM

Black Polled  
Bull ASA #4163813 JC843 BD: 10/5/2021

S A V TERRITORY 7225 MR ISHEE CATALYST  
OPEN GATE HOBBS OGR6843  
OGRY891 SVRZ457

365 Day Ultrasound										
BW	10/22 WW	SALE WT	SC	ADG	WDA	IMF	BF	REA		
83	1300	1696	41.5	3.70	2.96	1.28	0.15	15.25		
CE	BW	WW	YW	MCE	MILK	MWW	MB	REA	API	TI
9.9	2.0	86.1	131.8	4.8	25.2	68.2	0.37	0.93	120.8	83.4

**102 JD199** 1/2 SM

Black Polled  
Bull ASA #4163816 JD199 BD: 10/8/2021

S A V TERRITORY 7225 SVRW909  
OPEN GATE HOBBS OGRD199  
OGRY891 OGRB677

365 Day Ultrasound										
BW	10/22 WW	SALE WT	SC	ADG	WDA	IMF	BF	REA		
86	1248	1606	45.0	3.30	2.81	4.42	0.21	14.50		
CE	BW	WW	YW	MCE	MILK	MWW	MB	REA	API	TI
8.8	2.1	90.0	140.1	3.9	24.6	69.6	0.46	0.71	123.2	87.5

**103 JA536** 5/8 SM

Black Polled  
Bull ASA #4163815 JA536 BD: 10/7/2021

S A V TERRITORY 7225 CDI TRUMP FORCE 156W  
OPEN GATE HOBBS OGRA536  
OGRY891 OGRR583

365 Day Ultrasound										
BW	10/22 WW	SALE WT	SC	ADG	WDA	IMF	BF	REA		
85	1084	1516	40.0	4.20	2.62	2.76	0.13	13.28		
CE	BW	WW	YW	MCE	MILK	MWW	MB	REA	API	TI
9.2	2.1	85.0	129.9	4.1	24.8	67.2	0.28	0.83	109.9	80.2





# FRIESEN

"Balanced Livestock Nutrition"

## Feeds Open Gate's Bulls

Friesen Nutrition's integrator protein supplementation and imPact beef mineral programs are designed to provide adequate nutrition for your herd through all production phases. Our year-round supplementation programs provide the required nutrients to cows, first-time heifers, growing cattle, mature bulls, and freshly-weaned or high-risk calves. Health, efficiency, and productivity of your herd are our main priorities!

Please call or stop by to see how we can improve your herd!

## Talk with our Nutrition Specialist!

**Dr. Cathy Lockard**

Livestock Nutritionist

406-799-1030

cathy.lockard@friesennutrition.com

748 Crescent Circle, Great Falls,

MT 59404, USA

Tel: 1-406-452-5633

Toll Free: 1-866-8-P R E M I X  
7 7 3 6 4 9

 **imPact**  
Beef Mineral Program

**integrator**  
beef

formulated with

Elanco

**Rumensin.**

& **BIO-MOS® 2**





**105 K809** *1/2 SM Open Heifer*

Black Polled  
 Cow ASA #4177205 K809 BD: 1/7/2022  
 BW: 75 10/22 WW: 754

HOOK'S BLACK HAWK 50B CONNEALY SPUR  
 HOOK'S EAGLE 6E H409  
 HOOK'S CRYSTAL 1C SVRY28

CE	BW	WW	YW	MCE	MILK	MWW	MB	REA	API	TI
13.2	-0.7	88.5	138.4	6.1	18.6	62.8	0.53	0.87	152.1	89.7

**106 K805** *9/16 SM Open Heifer*

Black Polled  
 Cow ASA #4177131 K805 BD: 1/7/2022  
 BW: 75 10/22 WW: 852

HOOK'S BLACK HAWK 50B CONNEALY SPUR  
 HOOK'S EAGLE 6E H400  
 HOOK'S CRYSTAL 1C OGRA332

CE	BW	WW	YW	MCE	MILK	MWW	MB	REA	API	TI
13.1	-0.5	89.7	141.4	6.1	18.0	62.7	0.52	0.88	154.0	90.2

**107 K822** *3/4 SM Open Heifer*

Heterozygous Black Polled  
 Cow ASA #4177078 K822 BD: 1/10/2022  
 BW: 96 10/22 WW: 736

HOOK'S BLACK HAWK 50B RED SPARROW AW696  
 HOOK'S EAGLE 6E H412  
 HOOK'S CRYSTAL 1C OGRZ965

CE	BW	WW	YW	MCE	MILK	MWW	MB	REA	API	TI
12.7	-0.1	87.3	129.5	5.2	20.3	64.0	0.43	1.03	146.8	88.4

**108 K829** *1/2 SM Open Heifer*

Black Polled  
 Cow ASA #4177285 K829 BD: 1/13/2022  
 BW: 86 10/22 WW: 725

HOOKS TAURUS 24T  
 HOOK'S YELLOWSTONE 97Y OGRG330  
 HOOKS SHEYENNE 77S

CE	BW	WW	YW	MCE	MILK	MWW	MB	REA	API	TI
12.4	0.1	78.7	120.6	7.1	25.2	64.6	0.29	0.70	127.9	79.1

**109 K871** *7/8 SM Open Heifer*

Black Polled  
 Cow ASA #4150139 K871 BD: 2/1/2022  
 BW: 91 10/22 WW: 729

CCR WIDE RANGE 9005A OLF OTIS Y43  
 GIBBS 7382E BROAD RANGE OGRF742  
 SSF BLK LOUISE Y534 OGRG952

CE	BW	WW	YW	MCE	MILK	MWW	MB	REA	API	TI
12.5	0.7	96.1	155.5	8.5	23.0	71.1	0.09	1.10	129.1	84.7

**110 K914** *3/4 SM Open Heifer*

Black Polled  
 Cow ASA #4177130 K914 BD: 2/14/2022  
 BW: 86 10/22 WW: 728

CCR WIDE RANGE 9005A GW PREMIUM BEEF 021TS  
 GIBBS 7382E BROAD RANGE OGRG870  
 SSF BLK LOUISE Y534 OGRA550

CE	BW	WW	YW	MCE	MILK	MWW	MB	REA	API	TI
13.2	-0.6	83.2	134.0	7.5	22.0	63.6	0.31	0.99	136.9	83.7



# 111 K888 *3/4 SM Open Heifer*

Black Polled  
 Cow ASA #4145919 K888 BD: 2/7/2022  
 BW: 95 10/22 WW: 604

CDI REVIVAL 370D GAR-EGL PROTEGE  
**CDI TRUSTEE 387F** OGRB672  
 CDI MISS HOMETOWN 163C OGRS583

CE	BW	WW	YW	MCE	MILK	MWW	MB	REA	API	TI
9.5	2.4	85.5	130.4	4.2	24.4	67.1	0.32	1.03	121.9	81.6

# 112 K868T *3/4 SM Open Heifer*

Black Polled  
 Cow ASA #4145946 K868T BD: 1/28/2022  
 BW: 86 10/22 WW: 770

NF TRUMP S582 HOOK'S XAVIER 14X  
**CDI TRUMP FORCE 156W** TAYLORE539  
 CDI MS SHEAR FORCE 53P TAYLOR Y306

CE	BW	WW	YW	MCE	MILK	MWW	MB	REA	API	TI
9.6	0.8	87.4	134.4	5.0	19.2	62.8	0.26	1.19	130.0	82.8

# 113 K839T *PB SM Open Heifer*

Heterozygous Black Polled  
 Cow ASA #4177133 K839T BD: 1/12/2022  
 BW: 87 10/22 WW: 824

NF TRUMP S582 CS182  
**CDI TRUMP FORCE 156W** TAYLORE569  
 CDI MS SHEAR FORCE 53P TAYLORZ392

CE	BW	WW	YW	MCE	MILK	MWW	MB	REA	API	TI
6.8	3.8	97.0	143.4	3.9	21.7	70.2	0.15	1.27	127.5	86.8

# 114 K940 *PB SM Open Heifer*

Black Polled  
 Cow ASA #4177128 K940 BD: 2/22/2022  
 BW: 81 10/22 WW: 752

LFE GOTHAM 819Y TRIPLE C SINGLETARY S3H  
**LFE THE RIDDLER 323B** OGRA506  
 LFE BS CHARO 23Y OGRW829

CE	BW	WW	YW	MCE	MILK	MWW	MB	REA	API	TI
7.9	3.0	87.4	136.2	7.8	23.8	67.4	0.16	0.95	127.7	82.6

# 115 K848T *3/4 SM Open Heifer*

Black Polled  
 Cow ASA #4145943 K848T BD: 1/17/2022  
 BW: 76 10/22 WW: 720

CCR COWBOY CUT 5048Z W H S LIMELIGHT 64V  
**WS PROCLAMATION E202** TAYLOR H749  
 WS MISS SUGAR C4 TAYLORZ390

CE	BW	WW	YW	MCE	MILK	MWW	MB	REA	API	TI
13.1	0.7	90.4	137.7	8.1	28.1	73.3	0.59	0.86	154.9	93.5

# 116 K906 *7/16 SM Open Heifer*

Black Polled  
 Cow ASA #4145835 K906 BD: 12/12/2021  
 BW: 80 10/22 WW: 646

BASIN PAYWEIGHT 1682 OLF OTIS Y43  
**DEER VALLEY GROWTH FUND** G116  
 DEER VALLEY RITA 36113 OGRE556

CE	BW	WW	YW	MCE	MILK	MWW	MB	REA	API	TI
14.3	-0.2	99.5	165.5	11.5	22.1	71.8	0.24	0.59	138.8	88.7

# 117 K838 *1/2 SM Open Heifer*

Black Polled  
 Cow ASA #4145874 K838 BD: 1/21/2022  
 BW: 88 10/22 WW: 714

BASIN PAYWEIGHT 1682 OLF OTIS Y43  
**DEER VALLEY GROWTH FUND** G119  
 DEER VALLEY RITA 36113 OGRE444

CE	BW	WW	YW	MCE	MILK	MWW	MB	REA	API	TI
13.8	0.3	97.8	161.8	10.8	22.5	71.3	0.22	0.69	137.8	88.9

# 118 K873 *1/4 SM Open Heifer*

Black Polled  
 Cow ASA #4150132 K873 BD: 2/3/2022  
 BW: 79 10/22 WW: 708

BASIN PAYWEIGHT 1682 APEX FOCUS 053  
**DEER VALLEY GROWTH FUND** SVRY28  
 DEER VALLEY RITA 36113 SVR S692

CE	BW	WW	YW	MCE	MILK	MWW	MB	REA	API	TI
13.4	-0.5	86.8	142.9	9.8	19.6	62.9	0.34	0.43	135.0	82.8

# 119 K862 *7/16 SM Open Heifer*

Black Polled  
 Cow ASA #4145827 K862 BD: 1/29/2022  
 BW: 87 10/22 WW: 822

BASIN PAYWEIGHT 1682 OLF OTIS Y43  
**DEER VALLEY GROWTH FUND** G138  
 DEER VALLEY RITA 36113 OGRE608

CE	BW	WW	YW	MCE	MILK	MWW	MB	REA	API	TI
14.3	0.0	100.3	168.5	11.5	23.2	73.3	0.22	0.69	135.6	89.0

# 120 K865 *1/4 SM Open Heifer*

Black Polled  
 Cow ASA #4145898 K865 BD: 1/31/2022  
 BW: 80 10/22 WW: 654

S A V RENOWN 3439 DDR-RAB DESTINED X8516  
**S A V RENEW 8132** OGRA410  
 S A V BLACKCAP MAY 4593 SVRX295

CE	BW	WW	YW	MCE	MILK	MWW	MB	REA	API	TI
9.6	1.3	89.9	141.8	7.0	20.0	64.9	0.38	0.67	121.0	83.5

OPEN GATE RANCH

**121 K808** *1/2 SM Open Heifer*

Black Polled  
 Cow ASA #4150140 K808 BD: 1/6/2022  
 BW: 81 10/22 WW: 728

HOOK'S BLACK HAWK 50B S A V TERRITORY 7225  
 HOOK'S EAGLE 6E H467  
 HOOK'S CRYSTAL 1C SVRY30

CE	BW	WW	YW	MCE	MILK	MWW	MB	REA	API	TI
12.8	-2.1	91.8	145.3	4.7	18.0	63.8	0.51	1.05	156.1	95.2

**122 K933** *3/8 SM Open Heifer*

Black Polled  
 Cow ASA #4177132 K933 BD: 2/18/2022  
 BW: 81 10/22 WW: 748

S A V RESOURCE 1441 OGR SAGELAND  
 S A V TERRITORY 7225 OGRA37  
 S A V EMBLYNETTE 3293 HILLS T20 TENX 106GY

CE	BW	WW	YW	MCE	MILK	MWW	MB	REA	API	TI
10.9	1.3	87.2	139.5	4.9	16.2	59.7	0.39	0.58	125.7	82.6

**123 K869** *3/8 SM Open Heifer*

Black Polled  
 Cow ASA #4177129 K869 BD: 2/1/2022  
 BW: 87 10/22 WW: 754

S A V RESOURCE 1441 SVRW909  
 S A V TERRITORY 7225 OGRA289  
 S A V EMBLYNETTE 3293 OGR703

CE	BW	WW	YW	MCE	MILK	MWW	MB	REA	API	TI
10.0	0.7	83.2	130.3	3.9	16.7	58.3	0.36	0.62	124.6	79.2

**124 K875T** *1/2 SM Open Heifer*

Black Polled  
 Cow ASA #4145788 K875T BD: 1/30/2022  
 BW: 88 10/22 WW: 768

MYTTY IN FOCUS SVR S937  
 W H S LIMELIGHT 64V TAYLORW312  
 W H S PREDESTINED LASS 77T SV L160

CE	BW	WW	YW	MCE	MILK	MWW	MB	REA	API	TI
12.2	1.8	74.8	118.3	8.7	25.3	62.6	0.56	0.57	130.4	79.4

**125 K850T** *3/4 SM Open Heifer*

Red Polled  
 Cow ASA #4145958 K850T BD: 1/19/2022  
 BW: 92 10/22 WW: 812

GW REDESTINED 642X BROWN 3K STAKEHOLDER X7870  
 CDI HOMETOWN 246A TAYLORF578  
 CDI MSTRUMP 86U TAYLORY349

CE	BW	WW	YW	MCE	MILK	MWW	MB	REA	API	TI
6.6	3.7	98.4	155.0	2.3	23.0	72.2	0.35	0.97	130.0	88.0

**126 K907T** *3/8 SM Open Heifer*

Red Polled  
 Cow ASA #4145954 K907T BD: 3/26/2022  
 BW: 92 10/22 WW: 720

FRITZ ANVIL 747C CDI MAVERICK 335B  
 FRITZ ANVIL 0259 TAYLORF591  
 FRITZ EMULOUS 398A TAYLORA421

CE	BW	WW	YW	MCE	MILK	MWW	MB	REA	API	TI
9.3	1.6	80.7	124.7	5.5	27.2	67.5	0.43	0.54	130.7	79.7

**127 K895T** *1/2 SM Open Heifer*

Red Polled  
 Cow ASA #4145796 K895T BD: 2/14/2022  
 BW: 90 10/22 WW: 804

BROWN 3K STAKEHOLDER X7870 TAYLORYS182 YAWP  
 FW294 TAYLORC480  
 TAYLORW294 TAYLORY350

CE	BW	WW	YW	MCE	MILK	MWW	MB	REA	API	TI
7.7	3.8	93.6	145.0	4.4	29.3	76.1	0.26	0.51	124.0	82.2

**128 K878T** *3/4 SM Open Heifer*

Heterozygous Black Polled  
 Cow ASA #4145963 K878T BD: 1/31/2022  
 BW: 84 10/22 WW: 698

WS ALL ABOARD B80 BROWN BLW STATISTICIAN B5240  
 KBHR ALL AMERICAN G104 TAYLORE556  
 KBHR C078 TAYLORE556

CE	BW	WW	YW	MCE	MILK	MWW	MB	REA	API	TI
10.6	2.0	88.9	139.4	5.9	26.6	71.0	0.43	1.03	132.8	87.7

**129-134 COMMERCIAL** *Open Heifers*

Spring-born open heifers. Current average weight 886#.

**135-148 COMMERCIAL** *Open Heifers*

Fall-born open heifers. Born 9/25-11/1/2022. Current average weight 981#.



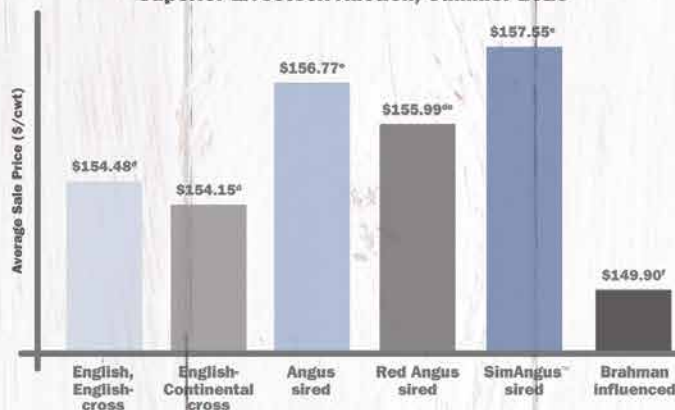
# MORE PER HEAD PERIOD



**SimGenetics**  
PROFIT THROUGH SCIENCE  
American Simmental Association

## EFFECT OF SIRE BREED ON SALE PRICE OF BEEF STEER CALVES

Superior Livestock Auction, Summer 2020<sup>c</sup>



SimAngus™-sired steer calves sold through Superior Livestock Auction in summer 2020 earned **more at sale time** than all other calves.<sup>ab</sup>

It's no wonder the percentage of SimAngus™ calves marketed through the industry's largest video auction has grown **eightfold** since 2010.

Want low-risk, high-potential calves with earning potential?

## STAND STRONG SIMMENTAL

406-587-4531 • [simmental.org](http://simmental.org)

<sup>a</sup> For lots of 50 head or more. <sup>b</sup> Kansas State University, December 2020, Superior Livestock Auction data analysis of 3,280 lots, 394,900 head of beef calves marketed during summer 2020. (P<.0001)  
<sup>c</sup> Lots that qualified for breed-related programs were excluded from the model due to potential confounding effects with sire breed analysis and, for many, few lots in the data.  
<sup>d, e, f</sup> Means without a common superscript differ (P<.05). Lots of calves in breed-identified groups were sired by bulls from the respective breeds and out of dams with no Brahman influence.

## ASA QUICK REFERENCE TO EPDS, INDEXES AND \$VALUES

**EXPECTED PROGENY DIFFERENCES (EPDS):** EPDs are the most accurate and effective tool available for comparing genetic levels. In using EPDs, the difference between two sires' EPDs represents the unit difference expected in the performance of their progeny. For example, if sires A and B have EPDs of +10 and -5, a 15-unit difference would be expected in their progeny (moving from -5 to +10 yields 15 units). Key to using EPDs is knowing in what units they are expressed. For example, if the above case referred to weaning weight EPDs, sire A would be expected to sire 15 pounds more weaning weight than sire B. If calving ease was the trait, sire A would be expected to sire 15 percent more unassisted births in first-calf heifers; in other words, if sire B sired 30 assists in a group of 100 heifers, we would expect sire A to require 15 assists. A percentile-ranking chart is required to determine where a bull's EPDs rank him relative to other bulls in the breed. For more detailed information about EPDs and \$ indexes, visit [www.simmental.org](http://www.simmental.org).

Listed below are the units in which ASA EPDs are expressed:

**ALL-PURPOSE INDEX (API):** Dollars per cow exposed under an all-purpose-sire scenario.

**BACK FAT (BF):** Inches of carcass backfat at 475 days.

**BIRTH WEIGHT (BW):** Pounds of birth weight.

**CALVING EASE (CE):** Percent of unassisted births when used on heifers.

**CARCASS WEIGHT (CW):** Pounds of carcass weight at 475 days.

**DOCILITY (DOC):** Percent of offspring receiving a disposition score of 1 (docile).

**MATERNAL CALVING EASE (MCE):** Percent of unassisted births in first-calving daughters.

**MILK (MLK):** Pounds of weaning weight due to milk.

**MARBLING (MARB):** Carcass marbling score at 475 days.

**MATERNAL WEANING WEIGHT (MWW):** Pounds of weaning weight due to milk and growth.

**RIBEYE AREA (REA):** Square inches of carcass ribeye at 475 days.

**TERMINAL INDEX (TI):** Dollars per cow exposed under a terminal-sire scenario.

**WEANING WEIGHT (WW):** Pounds of weaning weight.

**YEARLING WEIGHT (YW):** Pounds of yearling weight.

**YIELD GRADE (YG):** Carcass yield grade score at 475 days.

**\$ INDEXES:** Though EPDs allow for the comparison of genetic levels for many economically important traits, they only provide pieces of the economic puzzle. This is where \$ indexes come in. Through well-conceived, rigorous mathematical computation, \$ indexes blend EPDs and economics to estimate an animal's overall impact on integrated commercial production. The same technology that led to the dramatic progress in swine, poultry and dairy genetics over the last several decades was used to develop the following \$ indexes:

**ALL-PURPOSE INDEX (API):** Evaluates sires for use on the entire cow herd (bred to both Angus first-calf heifers and mature cows) with the portion of their daughters required to maintain herd size retained and the remaining heifers and steers put on feed and sold grade and yield.

**TERMINAL INDEX (TI):** Evaluates sires for use on mature Angus cows with all offspring put on feed and sold grade and yield.

For more detailed information about EPDs and \$indexes, visit: [www.simmental.org](http://www.simmental.org)







Your only locally owned & operated livestock video auction with an extensive national buyer base.

As we enter our 19th year of business, we invite you to market your cattle and sheep with us as one of the leading marketing firms in the nation. As a consignor or a buyer you will like our way of doing business.

#### 2023 SALES

Diamond Ring Sale	January 9-10
Early Summer Special	June 24-25
Summertime Classic	July 19-21
Early Fall Preview	August 23-24
Fall Premier Special	September 20

Plan to use our new **Northern Weekly Timed Online Auctions** late September through early June.

Call for details (866) 616-5035  
or go to

[northernlivestockvideo.com](http://northernlivestockvideo.com)



HOME OF THE  
**NORTHERN  
GOLD**  
PROGRAM

#### SALE COORDINATORS

Joe Goggins  
(406) 861-5664

Ty Thompson  
(406) 698-4783

Bill Cook  
(406) 670-0689

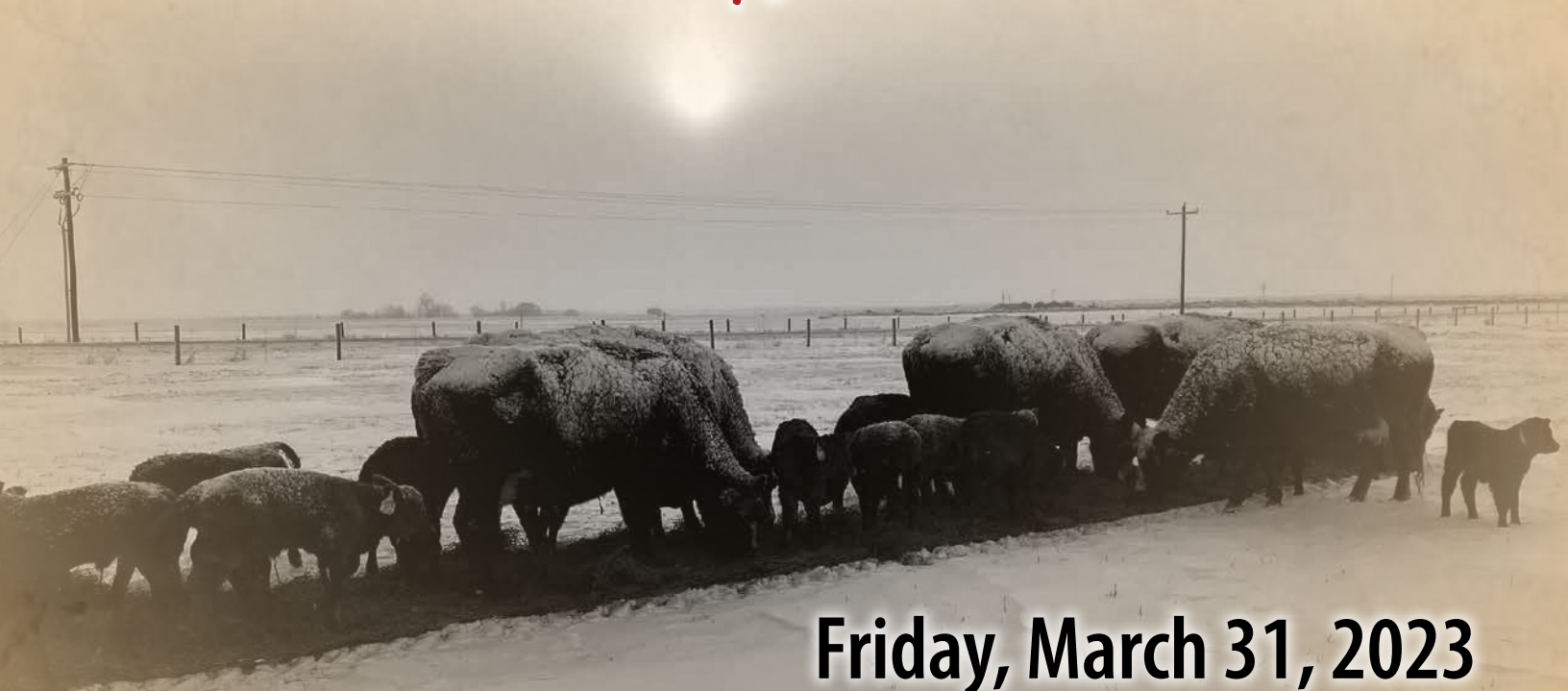
OPEN GATE RANCH

121 8th Lane SW  
Fairfield, MT 59436

Presorted  
First Class  
US Postage  
**PAID**  
SlateGroup

# Open Gate Ranch

## 43<sup>rd</sup> Annual Bull Sale



**Friday, March 31, 2023**

**1:00 pm • Augusta, MT**

At Broken O Land and Livestock

**Simmental. SimAngus. BUILD BETTER BEEF.**