



**36<sup>TH</sup> ANNUAL  
PRODUCTION  
SALE**



**140 Bulls Sell!**

**125 Yearlings  
15 Two Year Olds**

**Friday  
February 24, 2023**

**1:00 pm  
At the Ranch • Hall, Montana**

*Balancing traits for over four decades emphasizing  
real-world cattle with these essential traits:  
good feet & legs, udder quality, tight sheath and good disposition*



# Friday February 24, 2023

1:00 pm • at the Ranch • Hall, MT

**140 Bulls Sell!**

**125 Yearlings  
15 Two Year Olds**



**Bid through Northern  
Livestock Video Auction's  
NEW Online Bidding Platform!**



### First Breeding Season Guarantee

**Full coverage for 60 day breeding season.**

- Broken penis (ruptured penis) in a single sire group.
- Structural problems due to feet and legs

**50% Coverage of purchase price for 60 day breeding season**

All bulls selling for \$3500 or more will be covered 50% by Skinner Ranch Seedstock if they are injured during their first breeding season. Breeding season is defined as the 60 day period following first turn out of the bulls. 50% of the value of the injured bull, minus 1/2 salvage value, will be given as a credit in the next year's sale, or toward a replacement bull if one is available, or cash back. Salvage value, if any, will be split equally between Skinner Ranch Seedstock and the buyer. All injured bulls must be diagnosed by a veterinarian. Please notify us as soon as possible should an injury occur and prior to the injured bull being sold for salvage.

- Broken penis (ruptured penis) injury in a multiple sire pasture
- Broken legs
- Stifle
- Disposition

All claims must be made by September 1, 2023. This does not include death as this can be insured for nor does it cover mismanagement or neglect. It does not cover injuries sustained prior to breeding season if your bull is turned out with other bulls.

Exceptions are foot rot, wire cuts, illness, and items out of Skinner Ranch Seedstock control.

**Example 1:** A \$7000 bull is injured, a credit of \$3500 minus 1/2 any salvage value will be given to the buyer.

**Example 2:** A \$4000 bull is injured, a credit of \$2000 minus 1/2 of any salvage value will be given to the buyer.

**Example 3:** A \$3000 bull is injured, no credit is given. Buyer retains all salvage value.

### Desktop

1. It is best to use the Google Chrome web browser.
2. **Pre-Register at least one day prior to the sale.**
3. Go to **bid.northernlivestockvideo.com** and click "Get Approved to Bid".
4. Doing this will prompt you to create an account, after which you will fill out a bidder approval application.
5. Once Approved, an email will be sent to the email account provided, please click the link in that email to activate your account and a buyer number will be provided.
6. On sale day (after approval), visit **www.northernlivestockvideo.com** to view and bid!

### Mobile

Use your mobile device to download the Northern Livestock Auction App and follow the above steps to get approved. *There is an instructional video on how to register to bid on our website* **www.northernlivestockvideo.com**

### Phone Bidding

Anyone wanting to use the Northern Livestock phone bank to bid must pre-register and have a bid number to bid on the phone. **To register with NLVA call 866-616-5035 Before Sale Day.**

Northern's Sale Day Bid Line: **1-406-245-0889**

View the Online CATALOG and VIDEO CLIP of each BULL selling at **www.northernlivestockvideo.com**

Successful bidders making purchases will be contacted following the sale for payment and delivery arrangements.

**For technical assistance with  
Internet Viewing and Bidding Questions,  
call Sam Fraser 406-860-0590.**

### Accommodations and Transportation:

Missoula and Butte are served by major airlines.

**Missoula:** 60 miles west

Hilton Garden Inn . . . . 406-532-5300

Comfort Inn . . . . . 406-542-0888

**Butte:** 60 miles east

Comfort Inn . . . . . 406-494-8850

Days Inn . . . . . 406-494-7000

**Deer Lodge:** 30 miles east

Super 8 . . . . . 406-846-2370



# Friday February 24, 2023

Lunch at 12:00 Noon • Sale 1:00 pm  
At the Ranch • Hall, Montana

[www.SKINNERRANCH.COM](http://www.SKINNERRANCH.COM)

**406-288-3872**

office/home phone

Tim . . . . .406-581-6224

Kim . . . . .406-581-1852

Ron's Cell . . .406-370-6994

skinnerranch@blackfoot.net

**Sale Day Phone  
406-288-4001**



Office phone and emergency phone  
in case you need a phone number  
to call us on sale day

**406-288-3872**

\* Please call in advance to make  
arrangements to call in during the sale

**Auctioneer:**

Joe Goggins 406-861-5664

**Livestock Press Representatives:**

Kurt Kangas, American Angus Association - 406-366-4190

John Goggins, Western Ag Reporter - 406-373-5000

Jeff Thomas, Prairie Star, Ag Weekly - 406-581-8859

**Sale Locations and Directions:** Take Drummond Exit 154 off Interstate 90 then take Montana Highway 1 south 6.5 miles to Hall. Turn west in Hall and go 1.5 miles on paved road to ranch on the right side of road.

**Bids:** For buyers unable to attend the sale, a video of the bulls is available to view on Northern or Skinnerranch.com. To discuss the sale offering or bulls on video call us (preferably several days in advance) and describe your needs and budget and we would be happy to assist you in your selection. There will be a number of phones available sale day, please call in advance to make arrangements. Bids may also be sent or called in to Skinner Ranch personnel, auctioneer, or press representatives. Bids are handled with confidentiality and all sight unseen purchases are satisfaction guaranteed.

**Northern:** Sale will be available live on the internet at

[www.northernlivestockvideo.com](http://www.northernlivestockvideo.com) but will **NOT** be broadcast on television. See inside front cover for further information.

**QR code with each lot links to their video or view on Northern and Skinnerranch.com**

**Retained Ownership:** Skinner Ranch Seedstock is retaining 1/3 revenue sharing interest on all bulls, unless otherwise stated. Full possession and salvage value sell on all bulls.

**Terms and Conditions:** Cattle sell under terms and conditions of the American Angus Association and the American Salers Association.

**Payment for Bulls:** Full payment is due sale day unless prior arrangements have been made.

**Fertility and Soundness:** All bulls will be fertility and soundness examined by sale day. Scrotal circumferences will be available sale day.

**Bull Development:** The bulls were developed here at home on a high roughage ration at a 3 pound ADG to insure longevity and long term soundness.

**Herd Health:** All bulls and the entire cow herd were tested and are negative for persistent BVD infection. The bulls are vaccinated with Pyramid 5, VibrioLepto plus Hardjo Bovis, Vision 8/Somnus, foot rot vaccine, and Nasalgen.

**Johnes Tested:** The entire mature SRS cow herd has been tested negative for Johnes Disease in 2020, 2021, 2022, and 2023. There were no positive cows in the herd and we will continue screening for Johnes.

**Genetic Defects:** All SRS cattle are either tested free of known genetic defects or have no pedigree risk.

**Performance Data:** All current performance data, including foot scores and current weights, will be available sale day.

**Angus EPDs** are current as of 1/27/23. Updated EPDs can be viewed at [www.Angus.org](http://www.Angus.org).

**Liability:** People attending the sale do so at their own risk and responsibility without liability on the part of the ranch owner or employees.

**Delivery:** \$50 discount on all bulls picked up within 7 days of the sale in MT (Due to Health requirements on out of state bulls it will take longer to get them ready to travel). Bulls will start to be delivered after March 10th. Free delivery on bulls within 500 miles on purchases over \$4,000. The balance of the distance will be at cost.

**Volume Discounts:** A 5% discount will be given on purchases of five or more bulls.

**Loyalty Discount:** A 5% discount will be given to loyal customers that have purchased bulls in each of the last two sales (February 2021 and February 2022).

**Ron & Bev Skinner**  
406-288-3872  
skinnerranch@blackfoot.net

**Tim & Hayley**  
406-581-6224  
skinnerranch@gmail.com

**Kim & Michelle**  
406-581-1852  
skinnerranch@hotmail.com



**162 Farm to Market West • Hall, MT 59837**

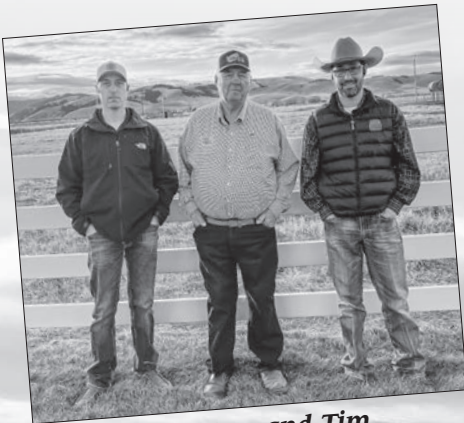
The Skinner family would like to welcome you all to our 36th annual bull sale. First, thank you for all the support you have shown through the years. We appreciate our customers and the friends that many have turned into.

Thank you for taking the time to look at our catalog and offering. We are extremely proud of this set of bulls. We believe the quality and consistency runs deep; every year it gets harder and harder to sift the top bulls because we are truly seeing less difference from the top to bottom. We continue to strive for a uniform set of bulls that will all go out and continue to improve our customers' herds through problem free, fertile cattle that improve their bottom line. We have had numerous comments the last two years that after walking through the bulls the customers say "90% of them will work for me."

The same can be said with our cow herd, we are truly seeing less difference from the top to bottom in performance, phenotype, udder structure, foot quality and skeletal structure.

Fortunately, most of the beef producers saw an increase in calf prices this year. This was desperately needed and we believe this trend will continue. Certainly there have been challenges, but as some of the most resilient people in the world, ranchers will persevere. Let us know if there is anything we can do for you or just call to catch up.

Here on the ranch we had a bit below average summer. We had enough stored water to get two crops, though they were back a little. Even so, the calves weaned well and our load of steers went right at 765 lbs while the bottom 20% of the heifer mates were 680 lbs.



**Kim, Ron and Tim**

The family continues to get a year older. Ron turned 75 this year and we celebrated with family and friends. Ron and Bev also celebrated their 50th wedding anniversary in September. We have one more nephew that graduated high school and is off at college. With 9 other Skinner kids from 3 to 17, there are always plenty of activities to attend. It is certainly a blessing to be able to raise kids in a rural setting.

We want to thank all of our friends, family, and neighbors that not only help us on sale day but throughout the year. The help our friends provide at clipping, videoing, clerking, running phones and running cattle through the ring are invaluable to us.

If you ever want to talk about cattle or just chat, don't hesitate to pick up the phone or stop by!

The Skinners

# Stockmans Insurance Agency LLC

## Livestock Insurer

Equine & Bovine

Licensed

Since 1989

## Coverage

Mortality, Loss of Use, Major Medical

For more information and rates, contact Bill Pelton

*"We partner with you to provide you the protection want and need."*

**Pelton  
Livestock  
Marketing & Consulting**

406.671.5100 bill@billpelton.com www.BILLPELTON.com  

## CATTLE INSURANCE RATES

THE FOLLOWING RATES ARE EFFECTIVE FEBRUARY 1, 2020

Age Limits - 90 days to 5 years on Bulls for: Accidental External Infertility

Maximum Value per animal is \$25,000.00.

Coverage for higher limits, older and younger animals is available subject to approval.

PREMIUM for Mortality plus- Accidental External Infertility  
(20% Co-Ins) (AEI) 11.0%

MINIMUM PREMIUMS - Annual policies - \$150.00

### BULL INFERTILITY DUE TO ACCIDENT ONLY

This policy is extended to indemnify YOU in the event of the ANIMAL covered by this section is proven to be PERMANENTLY INFERTILE, IMPOTENT or otherwise INCAPABLE of natural service or artificial insemination, resulting from ACCIDENTAL INJURY occurring during period of insurance, we will pay YOU the ACTUAL CASH VALUE of such ANIMAL(S) (20% Co-Ins) but not exceeding the sum insured stated in the DECLARATION.



*The  
Skinner  
Family*



**REFERENCE SIRE**

**MUSGRAVE FEATURE**

tattoo: A810 birth: 1/08/18 reg 19202252

**ANGUS BULL**

Musgrave Big Sky#  
**Musgrave Sky High 1535**  
 Flag Queen W 00649

Connealy Earnan 076E#  
 SAV Primrose 7861  
 S A V 004 Density 4336#  
 Plattemere Queen W 660

Mogck Bullseye#  
**Musgrave Pride 1416-166**  
 Waters Pride Rose 166

MOGCK Sure Shot#  
 Mogck Mary 1255  
 Bon View New Design 878#  
 Pride Rose Afton L I 130 N

\$W
<b>+51</b>
\$B
<b>+130</b>

Angus Association EPDs									
CED	BW	WW	YW	SC	HP	Milk	Marb	RE	
<b>+0</b>	<b>+3.1</b>	<b>+62</b>	<b>+109</b>	<b>+5.3</b>	<b>+13.7</b>	<b>+21</b>	<b>+5.8</b>	<b>+6.7</b>	



Musgrave Feature

**REFERENCE SIRE**

**SRS HONEST 3136H**

tattoo: 3136H birth: 1/30/20 reg +19884963

**ANGUS BULL**

Soo Line Motive 9016#  
**SRS Blockbuster 2256B**  
 SRS Rose 2256Z

HF Kodiak 5R  
 TLA Beauty 5R  
 Tombstone 050#  
 S R S Rose 6148S#

Koupals B&B Identity#  
**WK Blackbird 2224#**  
 WK Blackbird 5066

Sitz Upward 307R#  
 B&B Erica 605#  
 Connealy Network  
 TC Blackbird 0127

\$W
<b>+65</b>
\$B
<b>+98</b>

Angus Association EPDs									
CED	BW	WW	YW	SC	HP	Milk	Marb	RE	
<b>+5</b>	<b>+1.5</b>	<b>+67</b>	<b>+108</b>	<b>+4.2</b>	<b>+16.4</b>	<b>+20</b>	<b>+1.9</b>	<b>+5.9</b>	



SRS Honest 3136H

**REFERENCE SIRE**

**SQUARE B ATLANTIS 8060**

tattoo: 8060 birth: 8/24/18 reg +19405249

**ANGUS BULL**

Coleman Charlo 0256#  
**S A V Rainfall 6846**  
 S A V Blackcap May 4136

O C C Paxton 730P#  
 Bohi Abigale 6014  
 S A V 8180 Traveler 004#  
 S A V May 2397#

Connealy Consensus#  
**Elbanna of Conanga 1209**  
 Elbasta of Conanga 9703

KMK Alliance 6595 187#  
 Blinda of Conanga 004  
 Connealy Forward#  
 Elba of Conanga 37616#

\$W
<b>+53</b>
\$B
<b>+122</b>

Angus Association EPDs									
CED	BW	WW	YW	SC	HP	Milk	Marb	RE	
<b>+5</b>	<b>+0.7</b>	<b>+55</b>	<b>+103</b>	<b>+1.28</b>	<b>+18.5</b>	<b>+25</b>	<b>+5.8</b>	<b>+8.6</b>	



Square B Atlantis 8060

**REFERENCE SIRE**

**SRS HISTORIC 2208H**

tattoo: 2208H birth: 2/02/20 reg 19881561

**ANGUS BULL**

Mogck Bullseye#  
**Hoover No Doubt**  
 Miss Blackcap Ellston J2

MOGCK Sure Shot#  
 Mogck Mary 1255  
 SydGen C C & 7#  
 Miss Blackcap Ellston D154#

Tombstone 050#  
**SRS Joyce 2208Z**  
 Basin Joyce S474#

Sitz Upward 307R#  
 B&B Erica 605#  
 Brooks Ext 792#  
 Basin Joyce 2264

\$W
<b>+53</b>
\$B
<b>+179</b>

Angus Association EPDs									
CED	BW	WW	YW	SC	HP	Milk	Marb	RE	
<b>-4</b>	<b>+3.8</b>	<b>+71</b>	<b>+131</b>	<b>+9.0</b>	<b>+7.2</b>	<b>+20</b>	<b>+8.4</b>	<b>+6.9</b>	



SRS Historic 2208H

**REFERENCE  
SIRE**

**SRS GLACIER 2256G**

tattoo: 2256G birth: 1/08/19 reg 19472962

**ANGUS BULL**

Connealy Capitalist 028#  
**LD Capitalist 316**  
LD Dixie Erica 2053

S A V Final Answer 0035#  
Prides Pita of Conanga 8821

C A Future Direction 5321#  
LD Dixie Erica Oar 0853

Tombstone 050#

**SRS Rose 2256Z**

S R S Rose 6148S

Sitz Upward 307R#  
Mytty Countess 906  
S A V 004 Density 4336#  
Vermilion Rose 7566#

\$W
<b>+64</b>
\$B
<b>+103</b>

Angus Association EPDs									
CED	BW	WW	YW	SC	HP	Milk	Marb	RE	
<b>+17</b>	<b>-2.8</b>	<b>+54</b>	<b>+101</b>	<b>+7.0</b>	<b>+8.7</b>	<b>+36</b>	<b>+1.0</b>	<b>+4.9</b>	



SRS Glacier 2256G

**REFERENCE  
SIRE**

**SRS HEADLINE 2277H**

tattoo: 2277H birth: 2/05/20 reg 19853261

**ANGUS BULL**

LD Capitalist 316  
**Musgrave 316 Stunner**  
MCATL Blackbird 831-1378#

Connealy Capitalist 028#  
LD Dixie Erica 2053

MCATL Pure Product 903-55#  
MCATL Blackbird 1378-573

Tombstone 050#

**SRS Rose 2277Z**

S R S Rose 0119X

Sitz Upward 307R#  
Mytty Countess 906  
S R S Trademark 732T  
S R S Rose 6146S

\$W
<b>+84</b>
\$B
<b>+126</b>

Angus Association EPDs									
CED	BW	WW	YW	SC	HP	Milk	Marb	RE	
<b>+2</b>	<b>+2.5</b>	<b>+82</b>	<b>+121</b>	<b>+2.58</b>	<b>+11.9</b>	<b>+30</b>	<b>+4.2</b>	<b>+4.4</b>	



SRS Headline 2277H

**REFERENCE  
SIRE**

**SITZ STELLAR 726D**

tattoo: 726D birth: 1/23/16 reg 18397542

**ANGUS BULL**

Benfield Substance 8506#  
**Mohnen Substantial 272#**  
Mohnen Glyn Mawr Elba 1758

H A Image Maker 0415#  
Benfield Edella 1105

LT Territory 5824 of EA#  
Mohnen Glyn Mawr Elba 1345

Connealy Final Product#

**SITZ Pride 200B**

Sitz Pride 308Y#

Connealy Product 568  
Ebonista of Conanga 471#  
Sitz Upward 307R#  
Sitz Pride 44P#

\$W
<b>+59</b>
\$B
<b>+140</b>

Angus Association EPDs									
CED	BW	WW	YW	SC	HP	Milk	Marb	RE	
<b>+3</b>	<b>-0.3</b>	<b>+70</b>	<b>+127</b>	<b>+8.9</b>	<b>+8.0</b>	<b>+18</b>	<b>+6.3</b>	<b>+5.8</b>	



Sitz Stellar 726D

**REFERENCE  
SIRE**

**SRS FAST TRACK 5283F**

tattoo: 5283F birth: 2/09/18 reg 19241798

**ANGUS BULL**

HF Defender 146B  
**HF Distinct 104D**  
HF Echo 321Z

HF Rebel 53Y  
HF Lucy 258U

HF Kodiak 250U  
HF Echo 21P

Connealy Black Granite#

**SRS Elba 5283C#**

S R S Elba 7141T

Connealy Consensus 7229#  
Eura Elga of Conanga 9109#  
S A V 004 Density 4336#  
S R S Elba 0184L

\$W
<b>+55</b>
\$B
<b>+128</b>

Angus Association EPDs									
CED	BW	WW	YW	SC	HP	Milk	Marb	RE	
<b>+1</b>	<b>+1.7</b>	<b>+58</b>	<b>+98</b>	<b>+3.2</b>	<b>+13.9</b>	<b>+25</b>	<b>+2.8</b>	<b>+7.3</b>	



SRS Fast Track 5283F

**Angus Reference Sires**

**REFERENCE  
SIRE**

**SRS GENERAL 4180G**

tattoo: SRS4180G birth: 2/4/19 reg 732124

**OPTIMIZER BULL** Polled Optimizer Homozygous Black  
 CONNEALY GREELEY CONNEALY CONFIDENCE 0100  
 SRS DYNASTY 667D PRECIOUS OF CONANGA 0484  
 SRS FINICKY 0838U CRO SURVEY 615S  
 SRS FINICKY 9809H  
 SRS GUNSLINGER 605Z TOMBSTONE 050  
 BASIN JOYCE S474  
**SRS JULIET 4180B** SRS FOCUS 9403F  
 SRS JULIET 0218M SRS JULIET 9505E

American Salers EPDs									
BW	WW	YW	MWW	Milk	Marb	Carcass	REA	Back Fat	
+1.5	+78	+110	+52	+14	+0.1	+32.4	+5.7	-.02	



SRS General 4180G

**REFERENCE  
SIRE**

**SRS GUIDELINE 7126G**

tattoo: SRS7126G birth: 02/01/19 reg 732117

**OPTIMIZER BULL** Polled Optimizer Black  
 SRS BENCHMARK 8105B SRS ZEUS 0509Z  
 SRS SHANNON 8105U  
**SRS ELEMENT 4154E** PRK YELLOWSTONE 966Y  
 SRS MORGAN 0938W  
 SRS MORGAN 4154B6  
 SRS BOTTOM LINE 978B SOO LINE MOTIVE 9016  
 SRS JULIET 0584R  
**SRS LACE 7126E** SRS UNREAL 0151U  
 SRS LACE 3179A SRS LACE 8114U

American Salers EPDs									
BW	WW	YW	MWW	Milk	Marb	Carcass	REA	Back Fat	
-3.5	+58	+84	+51	+22	+0.1	+20.2	+4.3	-.03	



SRS Guideline 7126G

**REFERENCE  
SIRE**

**SRS GOVERNOR 4111G**

tattoo: SRS4111G birth: 02/12/19 reg 732159

**OPTIMIZER BULL** Polled Optimizer Homozygous Black  
 SITZ BRIGADE 12074 CONNEALY FINAL PRODUCT#  
 SITZ EMMA E 1861#  
**SRS ENGAGE 4221E** TOMBSTONE 050#  
 OX BOW MANOR 443#  
 SRS MANOR 4221B  
 SRS YUMA 072Y DJF WHISKEY RIVER 9006W  
 SRS RUSSETT 0305N  
**SRS LACE 4111B** SRS SAFE BET 9529S  
 SRS LACE 0814U SRS PRETTY FACE 0121L

American Salers EPDs									
BW	WW	YW	MWW	Milk	Marb	Carcass	REA	Back Fat	
-1.7	+85	+128	+69	+27	+0.1	+50.2	+7.5	-.02	



SRS Governor 411G

**REFERENCE  
SIRE**

**SRS FLASH POINT 3149F**

tattoo: SRS3149F birth: 02/3/18 reg 725697

**OPTIMIZER BULL** Polled Optimizer Homozygous Black  
 CONNEALY GREELEY CONNEALY CONFIDENCE 0100  
 PRECIOUS OF CONANGA 0484  
**SRS DYNASTY 667D** CRO SURVEY 615S  
 SRS FINICKY 9809H  
 SRS FINICKY 0838U  
 TOMBSTONE 050 SITZ UPWARD 307R  
 MYTTY COUNTESS 906  
**SRS FOOTLOOSE 3149A** SRS FOCUS 9403F (479584)  
 SRS FOOTLOOSE 9927J SRS FOOTLOOSE 9644F

American Salers EPDs									
BW	WW	YW	MWW	Milk	Marb	Carcass	REA	Back Fat	
+6.4	+80	+127	+55	+15	+0.1	+35.9	+6.7	-.02	



SRS Flash Point 3149F



## Scan the QR code to watch video of each lot!

1. Open the camera on your phone and hover over the QR code. Do not take a picture.
2. A yellow box with a link will pop up. Click on that link.
3. Video will start playing for that lot!

Capitalist 028#	Birth Weight	81
Erica 2053	205 Weight	774
one 050#	Weaning Rat	109
se 6148S#	SNW	1@81
ve Sky High 1535	WN Prod	1@109
ve Pride 1416-166		
gate 6015		
ckbird 2204Z		
on EPDs		
SC	Milk	
-08	+33	
\$W	B	
+72		



of a beautifully design  
 his lines with a big to  
 ling bull in our 2020 s  
 birthweight progeny v

# SRS BULL LOTTERY

*We will be offering a \$750 credit toward any bull purchased by customers who are in attendance at the sale.*

**Every bull bought by someone in attendance will be entered into the drawing.**



If you buy three bulls you get three chances to win. Immediately following the sale we will draw a winner.

*You must still be present to claim the \$750 credit.*



LOT  
**1**

**SRS GLACIER O284K**

tattoo: 0284K birth: 01/14/22 reg: 20437778

**ANGUS BULL**

LD Capitalist 316  
**SRS Glacier 2256G**  
SRS Rose 2256Z

Connealy Capitalist 028#  
LD Dixie Erica 2053  
Tombstone 050#  
S R S Rose 6148S#

Musgrave Feature  
**SRS Blackbird 0284H**  
SRS Blackbird 8234F

Musgrave Sky High 1535  
Musgrave Pride 1416-166  
HA Delegate 6015  
SRS Blackbird 2204Z

Birth Weight	<b>81</b>
205 Weight	<b>774</b>
Weaning Rat	<b>109</b>
Sire Avg BW	<b>70@76</b>
Dam Avg BW	<b>1@81</b>
Dam WN Prod	<b>1@109</b>

Angus Association EPDs						
CED	BW	WW	YW	SC	HP	Milk
<b>+8</b>	<b>-0.1</b>	<b>+66</b>	<b>+113</b>	<b>-.08</b>	<b>+9.3</b>	<b>+33</b>
Marb	RE	Fat	\$W	\$B		
<b>+.13</b>	<b>+.43</b>	<b>-.008</b>	<b>+72</b>	<b>+101</b>		

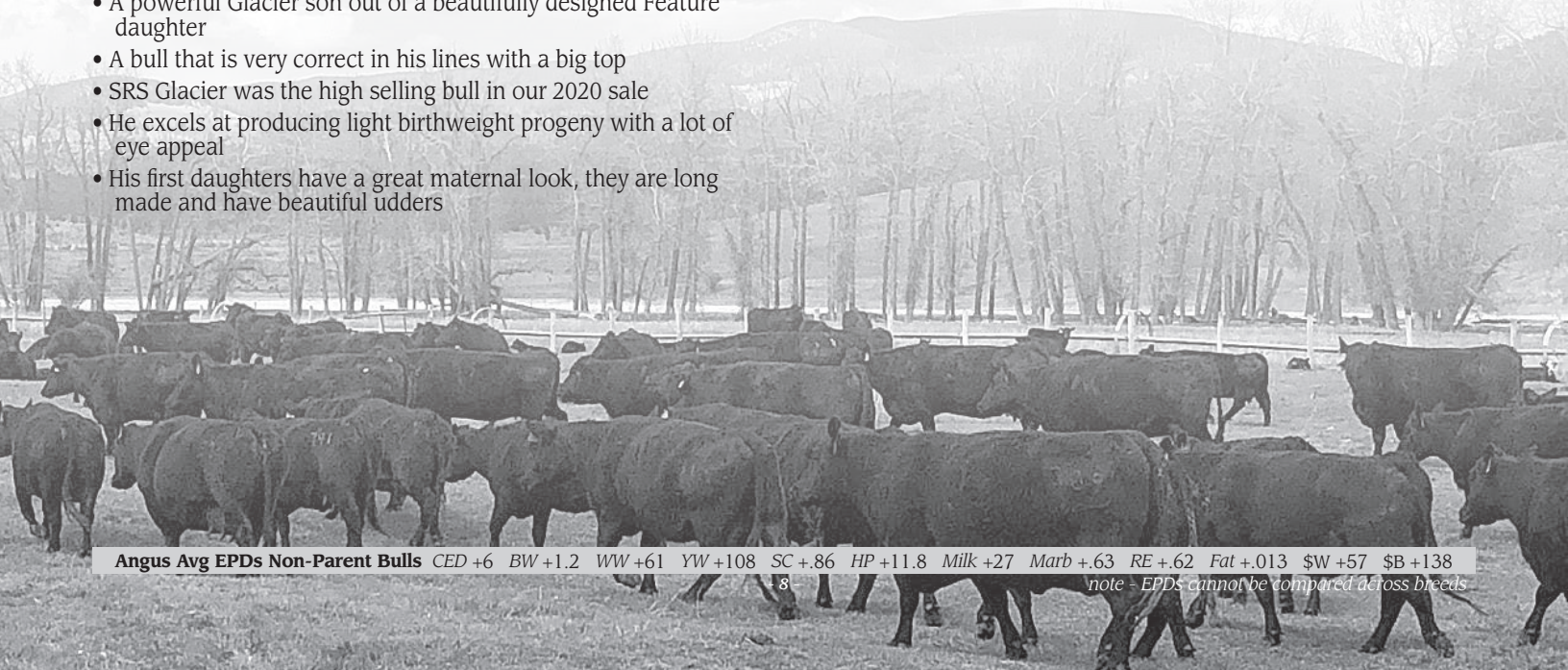


REFERENCE  
SIRE

SRS Glacier 2256G

**Heifer Bull Potential**

- A powerful Glacier son out of a beautifully designed Feature daughter
- A bull that is very correct in his lines with a big top
- SRS Glacier was the high selling bull in our 2020 sale
- He excels at producing light birthweight progeny with a lot of eye appeal
- His first daughters have a great maternal look, they are long made and have beautiful udders



Angus Avg EPDs Non-Parent Bulls CED +6 BW +1.2 WW +61 YW +108 SC +.86 HP +11.8 Milk +27 Marb +.63 RE +.62 Fat +.013 \$W +57 \$B +138

note - EPDs cannot be compared across breeds



**2**  
SRS

**SRS FEATURE 0288K**

tattoo: 0288K birth: 01/08/22 reg: 20437783

**ANGUS BULL**

Musgrave Sky High 1535  
Musgrave Feature  
Musgrave Pride 1416-166

Musgrave Big Sky#  
Flag Queen W 00649  
Mogck Bullseye#  
Waters Pride Rose 166

LD Capitalist 316  
MCATL Blackbird 831-1378#

**SRS Pride 0288H**

SRS Pride 8258F

SRS Blockbuster 2256B  
SRS Pride 4266B

Birth Weight	76
205 Weight	776
Weaning Rat	109
Sire Avg BW	182@85
Dam Avg BW	1@76
Dam WN Prod	1@109

Angus Association EPDs						
CED	BW	WW	YW	SC	HP	Milk
+7	+0.9	+76	+122	+0.66	+15.0	+25
Marb	RE	Fat	\$W	\$B		
+0.70	+0.64	+0.060	+75	+146		



**Heifer Bull Potential**

- An exceptional Feature son that has a lot of length and depth
- A bull that combines an impressive look with a good set of numbers
- This bull will stamp daughters with an excellent udder
- Musgrave Feature continues to produce the type and kind we appreciate here
- Progeny are long, correct, and stylish
- Features daughters are simply the type of females you want to have in your herd, they are beautifully designed, have a great maternal look, with excellent udders



Musgrave Feature

“From conformation and feeding to productivity and phenotype, they use a sharp knife. The uniformity of our calves has also increased. We no longer have twenty percent of our calves that don't fit the herd. Their advice is sound and conscientious. They would rather you the customer be happy than sell you a bull.”  
- Charlie, Will, & Matt Graveley, MT



**ANGUS BULL**  
 Musgrave 316 Stunner  
**SRS Headline 2277H**  
 SRS Rose 2277Z#

Soo Line Motive 9016#  
**SRS Rose 5221C**  
 S R S Rose 6148S#

LD Capitalist 316  
 MCATL Blackbird 831-1378#  
 Tombstone 050#  
 S R S Rose 0119X  
 HF Kodiak 5R  
 TLA Beauty 5R  
 S A V 004 Density 4336#  
 Vermilion Rose 7566#

Birth Weight	<b>78</b>
205 Weight	<b>745</b>
Weaning Rat	<b>105</b>
Sire Avg BW	<b>44@85</b>
Dam Avg BW	<b>6@80</b>
Dam WN Prod	<b>6@97</b>

tattoo: 5221K    birth: 01/23/22    reg: 20437792

Angus Association EPDs						
CED	BW	WW	YW	SC	HP	Milk
<b>+5</b>	<b>+0.1</b>	<b>+76</b>	<b>+130</b>	<b>+0.87</b>	<b>+4.5</b>	<b>+19</b>
Marb	RE	Fat	\$W	\$B		
<b>-.02</b>	<b>+.71</b>	<b>+.027</b>	<b>+64</b>	<b>+131</b>		

**ANGUS GS**  
 Powered by Regen Genetics

VIDEO



SRS Headline 2277H

- May be the stoutest bull to sell in the sale
- This bull is long, huge-topped and is thick-ended and soggy made
- SRS Headline is a bull we used back in our herd due to his impressive look and outstanding dam
- Headline had impressive performance from birth through yearling
- Headline's dam is still producing at 11 years of age and has an impeccable udder and feet
- Dam is a gorgeous Angus female that is hard to pick a hole in

Scan the QR code with your phone camera to go directly to that bull's video, or view on [www.NorthernLivestockVideo.com](http://www.NorthernLivestockVideo.com) and [www.SkinnerRanch.com](http://www.SkinnerRanch.com)



LOT  
**4**

**4**

**SRS HONEST 0280K**

tattoo: 0280K    birth: 02/11/22    reg: 20437775

**ANGUS BULL**

SRS Blockbuster 2256B

**SRS Honest 3136H**

WK Blackbird 2224#

Musgrave 316 Stunner

**SRS Rose 0280H**

SRS Rose 8213F

Soo Line Motive 9016#

SRS Rose 2256Z

Koupals B&B Identity#

WK Blackbird 5066

LD Capitalist 316

MCATL Blackbird 831-1378#

SRS Gunslinger 605Z

S R S Rose 6148S#

Birth Weight	<b>92</b>
205 Weight	<b>782</b>
Weaning Rat	<b>110</b>
Sire Avg BW	<b>38@81</b>
Dam Avg BW	<b>1@92</b>
Dam WN Prod	<b>1@110</b>

Angus Association EPDs						
CED	BW	WW	YW	SC	HP	Milk
<b>+1</b>	<b>+1.9</b>	<b>+78</b>	<b>+126</b>	<b>+0.56</b>	<b>+14.6</b>	<b>+22</b>
Marb	RE	Fat	\$W	\$B		
<b>+0.32</b>	<b>+0.40</b>	<b>+0.028</b>	<b>+73</b>	<b>+108</b>		



REFERENCE  
SIRE

*SRS Honest 3136H*

- A bull that is heavy-muscled and thick
- He is a moderate, level-designed bull with added eye-appeal
- SRS Honest is a bull we used due to his incredible look and balance
- We used Honest heavily on our heifers and his progeny averaged over 103 index at 205
- Honest calves are exceeding our high expectations
- Expect Honest progeny to wean heavy while moderating mature size
- Lot 4's dam is an exciting young cow that is a thick-made, correct cow that has a perfect udder





LOT 5



REFERENCE SIRE

Reich Ripper 37B



REFERENCE DAM

SRS Rose 2256Z, Dam of Lots 5 and 11



MATERNAL BROTHER

SRS Jefferson 0936, Maternal Brother to Lot 5



MATERNAL BROTHER

SRS Glacier 2256G, Maternal Brother to Lot 5



**SRS RIPPER 1047K**

tattoo: 1047K birth: 02/02/22 reg: +20444778

**ANGUS BULL**

DMM Riptide 2Z  
Reich Ripper 37B  
Reich Pride 68Z

DMM Riptide 87W  
DMM Dyna Blackcap 38X  
Duff 927K Movin Up 874  
Reich Pride 77W

Tombstone 050#  
SRS Rose 2256Z  
S R S Rose 6148S#

Sitz Upward 307R#  
Mytty Countess 906  
S A V 004 Density 4336#  
Vermilion Rose 7566#

Birth Weight	91
205 Weight	786
Weaning Rat	ET
Sire Avg BW	13@91
Dam Avg BW	5@86
Dam WN Prod	4@122

Angus Association EPDs						
CED	BW	WW	YW	SC	HP	Milk
+11	+1.0	+48	+79	+69	+10.1	+35
Marb		RE	Fat	\$W	\$B	
+.23		+.62	-.024	+60	+93	



**Heifer Bull Potential**

- A bull that will stop you in your tracks
- This bull is flat impressive to walk around, thick, deep, and correct
- A bull that has perfect feet
- Ripper is a bull we used for his impressive muscle shape, great feet and phenomenal daughters
- Lot 5's dam has been a front end donor, a true breed changer
- She is as long as you will find, thick-made with an outstanding udder and great feet
- She is also the dam to SRS Blockbuster, SRS Glacier, and SRS Jefferson



LOT  
**6**

**6**  
ANGUS STOCK

**SRS ATLANTIS 5220K**

tattoo: 5220K birth: 02/04/22 reg: 20483573

**ANGUS BULL**

S A V Rainfall 6846  
**Square B Atlantis 8060**  
Elbanna of Conanga 1209

Coleman Charlo 0256#  
S A V Blackcap May 4136  
Connealy Consensus#  
Elbasta of Conanga 9703

Soo Line Motive 9016#  
**SRS Rose 5220C**  
S R S Rose 6148S#

HF Kodiak 5R  
TLA Beauty 5R  
S A V 004 Density 4336#  
Vermilion Rose 7566#

Birth Weight	<b>96</b>
205 Weight	<b>731</b>
Weaning Rat	<b>103</b>
Sire Avg BW	<b>36@86</b>
Dam Avg BW	<b>5@86</b>
Dam WN Prod	<b>5@103</b>

Angus Association EPDs						
CED	BW	WW	YW	SC	HP	Milk
+0	+1.6	+62	+107	+69	+12.3	+32
Marb	RE	Fat	\$W	\$B		
+28	+48	+038	+68	+109		



REFERENCE  
SIRE

Square B Atlantis 8060

- Exciting bull with a great look
- Stylish, correct made bull that has lots of shape and depth
- He will leave you with a great set of daughters
- Atlantis is a bull we added due to his look and balanced numbers
- Atlantis transmits his same great look to his progeny
- We love this cow, take a look at her picture and you'll know why



REFERENCE  
DAM

SRS Rose 5220C  
Dam of Lot 6 and 7



MATERNAL  
SISTER

SRS Rose 0218H, Maternal Sister to Lots 6, 7 and 8

Angus Avg EPDs Non-Parent Bulls CED +6 BW +1.2 WW +61 YW +108 SC +86 HP +11.8 Milk +27 Marb +.63 RE +.62 Fat +.013 \$W +57 \$B +138



LOT  
**7**

## LOTS 7-8 FLUSH BROTHERS

- A powerful set of brothers that are loaded with red meat
- Two bulls that will add pounds to your calf crop while not sacrificing style
- Historic was our high-selling bull in 2021 and has seen heavy use back in our herd the last two years
- His progeny are big-bodied and long-sided with lots of thickness
- We used Historic to add softness and improve marbling, yet staying consistent with our program, he is backed by a phenomenal dam
- The dam of these flush brothers is simply extraordinary

**7** SRS HISTORIC 7158K  
tattoo: 7158K birth: 02/07/22 reg: +20437931

**ANGUS BULL**  
Hoover No Doubt  
**SRS Historic 2208H**  
SRS Joyce 2208Z

Soo Line Motive 9016#  
**SRS Rose 5220C**  
S R S Rose 6148S#

Mogck Bullseye#  
Miss Blackcap Ellston J2  
Tombstone 050#  
Basin Joyce S474#  
HF Kodiak 5R  
TLA Beauty 5R  
S A V 004 Density 4336#  
Vermilion Rose 7566#

Birth Weight	<b>92</b>
205 Weight	<b>796</b>
Weaning Rat	<b>ET</b>
Sire Avg BW	<b>43@90</b>
Dam Avg BW	<b>5@86</b>
Dam WN Prod	<b>5@103</b>

Angus Association EPDs						
CED	BW	WW	YW	SC	HP	Milk
-2	+2.9	+60	+101	+70	+9.5	+33
Marb	RE	Fat	\$W	\$B		
+43	+55	+001	+62	+126		

**ANGUS**  
Powered by Neogen GenesCook  
VIDEO

**8** SRS HISTORIC 501K  
tattoo: 501K birth: 02/25/22 reg: +20437933

**ANGUS BULL**  
Sire: **SRS Historic 2208H**  
Dam: **SRS Rose 5220C**

Birth Weight	<b>83</b>
205 Weight	<b>808</b>
Weaning Rat	<b>ET</b>

Angus Association EPDs						
CED	BW	WW	YW	SC	HP	Milk
+5	+0.9	+58	+100	+13	+15.4	+25
Marb	RE	Fat	\$W	\$B		
+43	+61	+057	+56	+126		

**ANGUS**  
Powered by Neogen GenesCook  
VIDEO



**MATERNAL  
SISTER**

SRS Rose 7202E, Maternal Sister to Lots 6, 7 and 8



**REFERENCE  
DAM**

SRS Rose 5220C, Dam of Lots 6, 7, and 8





REFERENCE SIRE

SRS Historic 2208H



LOT 10

**SRS HONEST 0209K**

tattoo: 0209K birth: 01/17/22 reg: 20437735

<b>ANGUS BULL</b>	SRS Blockbuster 2256B	Soo Line Motive 9016#	Birth Weight	79
<b>SRS Honest 3136H</b>	WK Blackbird 2224#	SRS Rose 2256Z	205 Weight	795
		Koupals B&B Identity#	Weaning Rat	112
		WK Blackbird 5066	Sire Avg BW	38@81
	Musgrave Feature	Musgrave Sky High 1535	Dam Avg BW	1@79
<b>SRS Tillie 0209H</b>	KR Tillie 3079	Musgrave Pride 1416-166	Dam WN Prod	1@112
		Pine Ridge Hammer S322#		
		WK Tillie 8467		

Angus Association EPDs						
CED	BW	WW	YW	SC	HP	Milk
+6	+0.6	+61	+100	+37	+18.0	+15
Marb	RE	Fat	\$W	\$B		
+0.36	+0.35	+0.059	+55	+91		



- An impressive Honest son that is long, level, and powerful
- SRS Honest is a bull we used due to his incredible look and balance
- We used Honest heavily on our heifers and his progeny averaged over 103 index at 205
- Honest calves are exceeding our high expectations
- Expect Honest progeny to wean heavy while moderating mature size
- He is out of a beautifully designed Feature daughter that stems from a great set of flush sisters

**9**

**SRS HISTORIC 4227K**

tattoo: 4227K birth: 02/05/22 reg: 20437703

<b>ANGUS BULL</b>	Mogck Bullseye#	Birth Weight	95
<b>SRS Historic 2208H</b>	Miss Blackcap Ellston J2	205 Weight	805
	Tombstone 050#	Weaning Rat	114
	Basin Joyce S474#	Sire Avg BW	43@90
	Tombstone 050#	Dam Avg BW	7@85
	Basin Blackbird R262#	Dam WN Prod	6@103
	S R S Update 0157U		
	S R S Juice 7168T		

Angus Association EPDs						
CED	BW	WW	YW	SC	HP	Milk
+5	+2.1	+75	+124	+78	+9.8	+27
Marb	RE	Fat	\$W	\$B		
+0.48	+0.59	+0.003	+73	+149		



- A long, big-topped bull with great performance
- His dam has a great track record



REFERENCE DAM

KR Tillie 3079  
Grandam of Lot 10



REFERENCE SIRE

SRS Honest 3136H



LOT  
**11**

**SRS HONEST 2256K**

tattoo: 2256K birth: 02/24/22 reg: 20437680

**ANGUS BULL**

SRS Blockbuster 2256B  
**SRS Honest 3136H**  
WK Blackbird 2224#

Soo Line Motive 9016#  
SRS Rose 2256Z  
Koupals B&B Identity#  
WK Blackbird 5066  
Sitz Upward 307R#  
Mytty Countess 906  
S A V 004 Density 4336#  
Vermillion Rose 7566#

Birth Weight	90
205 Weight	758
Weaning Rat	107
Sire Avg BW	38@81
Dam Avg BW	5@86
Dam WN Prod	4@122

Tombstone 050#  
**SRS Rose 2256Z**  
S R S Rose 6148S#

Angus Association EPDs						
CED	BW	WW	YW	SC	HP	Milk
+3	+1.8	+65	+114	+72	+14.4	+38
Marb	RE	Fat	\$W	\$B		
+1.14	+76	+0.17	+76	+127		



- A bull that exhibits more true muscle shape than any other bull in the sale
- A moderate, long-made bull that is very correct on his feet and legs
- Lot 11's dam has been a front end donor that is a true breed changer
- She is as long as you will find, thick-made with an outstanding udder and great feet
- She is also the dam to SRS Blockbuster, SRS Glacier, and SRS Jefferson



REFERENCE  
DAM

SRS Rose 2256Z  
Dam of Lots 5 and 11



MATERNAL  
BROTHER

SRS Stunner 1156H  
Maternal Brother of Lot 11



MATERNAL  
BROTHER

SRS Blockbuster, Maternal Brother of Lot 11



**13** **SRS HONEST 4251K**  
 tattoo: 4251K birth: 02/08/22 reg: 20437728

**ANGUS BULL**  
 SRS Blockbuster 2256B Soo Line Motive 9016#  
 SRS Rose 2256Z

**SRS Honest 3136H**  
 WK Blackbird 2224# Koupals B&B Identity#  
 WK Blackbird 5066

SRS Zorro 0880Z SydGen C C & 7#  
 Ox Bow Blanche 2105

**SRS Lady 4251B#**  
 CCAR Forever Lady Z262 Sitz Uncommon#  
 CCAR Forever Lady U698

Birth Weight	101
205 Weight	819
Weaning Rat	116
Sire Avg BW	38@81
Dam Avg BW	7@91
Dam WN Prod	7@107

Angus Association EPDs						
CED	BW	WW	YW	SC	HP	Milk
+0	+4.4	+78	+134	+95	+18.4	+27
Marb	RE	Fat	\$W	\$B		
+0.38	+0.74	-0.034	+67	+139		

**ANGUSGS**  
 Powered by Neogen Genescreen  
 VIDEO

• A powerful, long-made bull with added performance

**12** **SRS HONEST 0268K**  
 tattoo: 0268K birth: 01/16/22 reg: 20437766

**ANGUS BULL**  
 SRS Blockbuster 2256B Soo Line Motive 9016#  
 SRS Rose 2256Z

**SRS Honest 3136H**  
 WK Blackbird 2224# Koupals B&B Identity#  
 WK Blackbird 5066

PGC Forge Connealy Capitalist 028#  
 PGC Shoeshone Girl 4106#

**SRS Rose 0268H**  
 SRS Rose 7261E Vision Unanimous 1418#  
 SRS Rose 4216B

Birth Weight	73
205 Weight	797
Weaning Rat	112
Sire Avg BW	38@81
Dam Avg BW	1@73
Dam WN Prod	1@112

Angus Association EPDs						
CED	BW	WW	YW	SC	HP	Milk
+7	+2.1	+81	+132	+81	+13.6	+14
Marb	RE	Fat	\$W	\$B		
+0.51	+0.57	-0.005	+65	+133		

**ANGUSGS**  
 Powered by Neogen Genescreen  
 VIDEO

**Heifer Bull Potential**

- An extremely long-made, clean-fronted bull that always catches your eye in the pen
- Dam is a broody, big-bodied cow that has excelled in her first year

**14** **SRS HONEST 0207K**  
 tattoo: 0207K birth: 01/12/22 reg: 20437741

**ANGUS BULL**  
 SRS Blockbuster 2256B Soo Line Motive 9016#  
 SRS Rose 2256Z

**SRS Honest 3136H**  
 WK Blackbird 2224# Koupals B&B Identity#  
 WK Blackbird 5066

Musgrave Feature Musgrave Sky High 1535  
 Musgrave Pride 1416-166

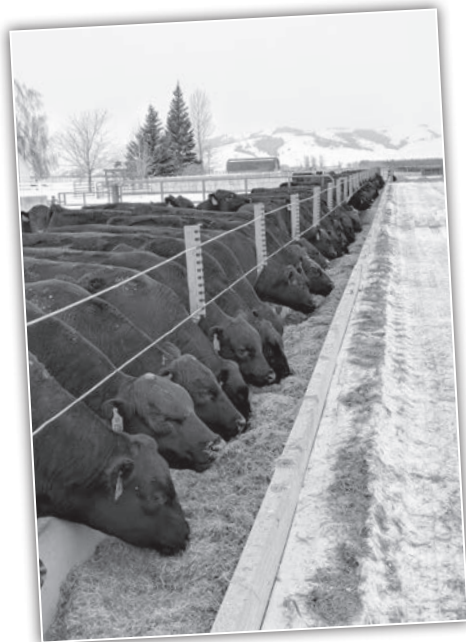
**SRS Tillie 0207H**  
 KR Tillie 3079 Pine Ridge Hammer S322#  
 WK Tillie 8467

Birth Weight	78
205 Weight	723
Weaning Rat	102
Sire Avg BW	38@81
Dam Avg BW	1@78
Dam WN Prod	1@102

Angus Association EPDs						
CED	BW	WW	YW	SC	HP	Milk
+3	+1.6	+72	+115	+1.18	+15.2	+23
Marb	RE	Fat	\$W	\$B		
+0.22	+0.58	+0.027	+73	+104		

**ANGUSGS**  
 Powered by Neogen Genescreen  
 VIDEO

- An attractive-patterned bull that has a tremendous amount of muscle shape
- This bull has great performance that weaned well off his impressive young dam



**15** **SRS HONEST 0242K**  
 tattoo: 0242K birth: 01/17/22 reg: 20437761

**ANGUS BULL**  
 SRS Blockbuster 2256B Soo Line Motive 9016#  
 SRS Rose 2256Z

**SRS Honest 3136H**  
 WK Blackbird 2224# Koupals B&B Identity#  
 WK Blackbird 5066

Hoover No Doubt Mogck Bullseye#  
 Miss Blackcap Ellston J2

**SRS Kathy 0242H**  
 SRS Kathy 5201C Sitz Longevity 556Z#  
 S R S Kathy 7142T#

Birth Weight	85
205 Weight	714
Weaning Rat	101
Sire Avg BW	38@81
Dam Avg BW	1@85
Dam WN Prod	1@101

Angus Association EPDs						
CED	BW	WW	YW	SC	HP	Milk
+2	+2.9	+82	+137	+1.30	+12.6	+24
Marb	RE	Fat	\$W	\$B		
+0.52	+0.73	+0.032	+76	+139		

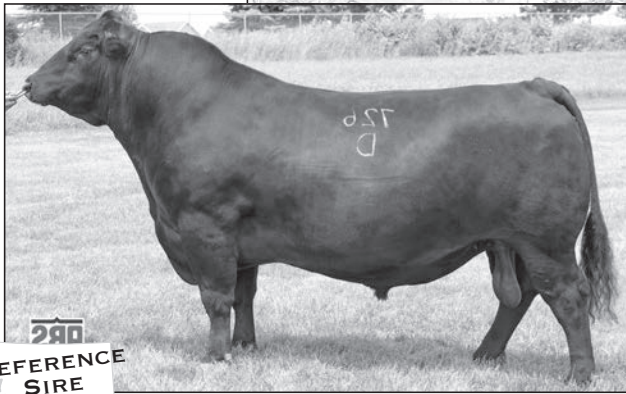
**ANGUSGS**  
 Powered by Neogen Genescreen  
 VIDEO

- Another square-made, attractive patterned Honest calf out of a nice first calf heifer

**SRS** “I’ve known Ron for over 20 years and he is as honest as the day is long. His family is following in his footsteps. If they tell you something about a bull you can bet it is the truth...Feet, disposition, fertility have all been outstanding.”  
 - Dean Jacobs, MT



LOT 16



Sitz Stellar 726D

**LOTS 16 - 17  
FLUSH BROTHERS**

- An exciting set of embryo brothers that are deep-ribbed and big topped
- These bulls couple thickness with a level design and incredible maternal value
- Stellar needs little introduction
- He is a widely used sire that is know for producing great feet and daughters with beautiful udders
- Their dam is a donor cow that has done an excellent job producing top end bulls and replacement females
- She is our thickest donor that has tremendous depth and rib shape, tied into a very attractive profile

**16** **SRS STELLAR 503K**  
tattoo: 503K birth: 02/17/22 reg: +20457326

**ANGUS BULL**  
Mohnen Substantial 272# Benfield Substance 8506#  
Sitz Stellar 726D Mohnen Glyn Mawr Elba 1758  
SITZ Pride 200B Connealy Final Product#  
Sitz Pride 308Y#

Musgrave Foundation# Kesslers Frontman R001#  
**SRS Blossom 4244B** MCATL Blackcap Juara 29-434  
SRS Joyce 2208Z Tombstone 050#  
Basin Joyce S474#

Birth Weight	82
205 Weight	753
Weaning Rat	ET
Sire Avg BW	26@83
Dam Avg BW	7@93
Dam WN Prod	7@113

**17** **SRS STELLAR 307K**  
tattoo: 307K birth: 02/14/22 reg: +20457324

**ANGUS BULL**  
Sire: **Sitz Stellar 726D**  
Dam: **SRS Blossom 4244B**

Birth Weight	82
205 Weight	723
Weaning Rat	ET

Angus Association EPDs						
CED	BW	WW	YW	SC	HP	Milk
-2	+1.8	+87	+146	+24	+14.0	+20
Marb	RE	Fat	\$W	\$B		
+.37	+.54	+.039	+77	+140		

ANGUS GS  
Powered by Neogen Genoscan  
VIDEO

Angus Association EPDs						
CED	BW	WW	YW	SC	HP	Milk
+4	+1.2	+78	+132	+.66	+15.2	+23
Marb	RE	Fat	\$W	\$B		
+.43	+.60	+.046	+74	+124		

ANGUS GS  
Powered by Neogen Genoscan  
VIDEO



SRS Atlantis 4244J



SRS Blossom 4244B, Dam of Lot 16 andv 17



REFERENCE SIRE

PGC Forge

“ I purchased bulls in his first sale in 1987 and nearly every one since. It’s been the best kept secret in the bull business...Not only his emphasis on bulls that work but his quest to build the perfect cow has formed a great balance. Ron has been very involved in the industry and this bodes well for us all. Now, his sons are continuing the tradition. It’s been a great pleasure in my life to know Ron, Bev, and their family. I would recommend SRS to anyone.”

- Paul Tyler, MT

**18** **SRS FORGE 8309K**  
 tattoo: 8309K birth: 02/26/22 reg: 20437851

**ANGUS BULL**  
 Connealy Capitalist 028# S A V Final Answer 0035#  
 Prides Pita of Conanga 8821

**PGC Forge**  
 PGC Shoeshone Girl 4106# Sitz Upside 547W#  
 PGC Shoshone Girl 0229#

SRS Decree 5155D SRS Blockbuster 2256B  
 Ox Bow Manor 5155

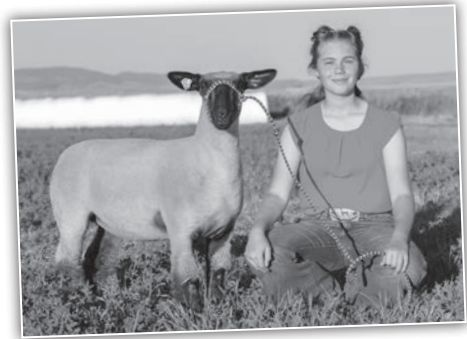
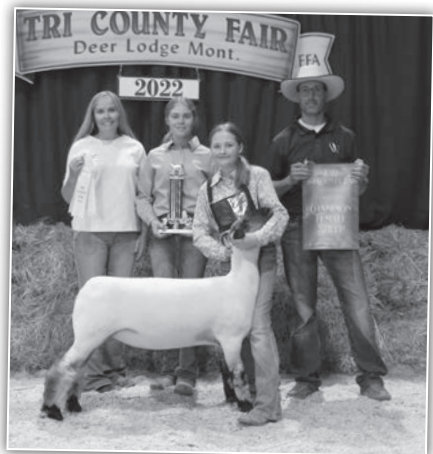
**SRS Elba 8309F**  
 SRS Elba 6227D R B Tour Of Duty 177#  
 S R S Elba 0382N

Birth Weight	91
205 Weight	820
Weaning Rat	116
Sire Avg BW	71@85
Dam Avg BW	3@87
Dam WN Prod	3@110

Angus Association EPDs						
CED	BW	WW	YW	SC	HP	Milk
+0	+4.3	+85	+145	+0.49	+8.5	+25
Marb	RE	Fat	\$W	\$B		
+0.03	+0.44	-0.004	+0.66	+1.28		

ANGUSGS  
 Powered by Neogen Genesys  
 VIDEO

• A powerful, thick bull that has the heaviest 205 day weight





**LOTS 19 - 21  
FLUSH BROTHERS**

- A deep, consistent set of flush brothers
- Bulls that will leave you with a tremendous set of replacement heifers
- Musgrave Feature continues to produce the type and kind we appreciate here
- Progeny are long, correct, and stylish
- Feature's daughters are simply the type of females you want to have in your herd, they are beautifully designed, have a great maternal look, with excellent udders

- The Pathfinder donor dam is an eleven year old cow that has never missed
- She is long, feminine-fronted with excellent feet and an impeccable udder

**19** **SRS FEATURE 301K**  
 tattoo: 301K birth: 02/07/22 reg: +20482064

**ANGUS BULL**  
 Musgrave Sky High 1535  
**Musgrave Feature**  
 Musgrave Pride 1416-166

Mogck Bullseye#  
 Waters Pride Rose 166

Sitz Upward 307R#  
 Mytty Countess 906

Tombstone 050#  
**SRS Rose 2277Z#**  
 S R S Rose 0119X

S R S Trademark 732T  
 S R S Rose 6146S

Birth Weight	<b>88</b>
205 Weight	<b>728</b>
Weaning Rat	<b>ET</b>
Sire Avg BW	<b>182@85</b>
Dam Avg BW	<b>9@95</b>
Dam WN Prod	<b>9@111</b>

**20** **SRS FEATURE 7154K**  
 tattoo: 7154K birth: 01/28/22 reg: +20437930

**ANGUS BULL**  
 Sire: **Musgrave Feature**  
 Dam: **SRS Rose 2277Z#**

Birth Weight	<b>88</b>
205 Weight	<b>708</b>
Weaning Rat	<b>ET</b>

Angus Association EPDs						
CED	BW	WW	YW	SC	HP	Milk
+2	+3.2	+75	+119	+1.42	+14.7	+28
Marb	RE	Fat	\$W	\$B		
+0.56	+0.13	+0.055	+74	+91		

**ANGUSGS**  
 Powered by Neogen GenesCopk  
 VIDEO

Angus Association EPDs						
CED	BW	WW	YW	SC	HP	Milk
-1	+2.2	+52	+88	+1.68	+7.9	+34
Marb	RE	Fat	\$W	\$B		
+0.51	+0.45	+0.051	+61	+111		

**ANGUSGS**  
 Powered by Neogen GenesCopk  
 VIDEO



**21** **SRS FEATURE 3136K**  
 tattoo: 3136K birth: 02/01/22 reg: +20437902

**ANGUS BULL**  
 Sire: **Musgrave Feature**  
 Dam: **SRS Rose 2277Z#**

Birth Weight	<b>88</b>
205 Weight	<b>733</b>
Weaning Rat	<b>ET</b>

Angus Association EPDs						
CED	BW	WW	YW	SC	HP	Milk
-5	+4.5	+73	+116	+2.14	+16.9	+29
Marb	RE	Fat	\$W	\$B		
+0.51	+0.31	+0.037	+67	+106		

**ANGUSGS**  
 Powered by Neogen GenesCopk  
 VIDEO

**MATERNAL BROTHER**

SRS Atlantis 2277J, Maternal Brother to Lots 19-21



REFERENCE SIRE

Musgrave Feature



LOT 24

**22 SRS FEATURE 0279K**  
tattoo: 0279K birth: 01/08/22 reg: 20437770

**ANGUS BULL**

Musgrave Sky High 1535  
Musgrave Feature  
Musgrave Pride 1416-166

Musgrave Big Sky#  
Flag Queen W 00649  
Mogck Bullseye#  
Waters Pride Rose 166  
LD Capitalist 316  
MCATL Blackbird 831-1378#  
SRS Blockbuster 2256B  
Ox Bow Manor 443#

Birth Weight	67
205 Weight	784
Weaning Rat	111
Sire Avg BW	182@85
Dam Avg BW	1@67
Dam WN Prod	1@111

Musgrave 316 Stunner  
**SRS Manor 0279H**  
SRS Manor 8209F

Angus Association EPDs						
CED	BW	WW	YW	SC	HP	Milk
+5	+1.5	+63	+106	+1.14	+12.4	+32
Marb	RE	Fat	\$W	\$B		
+.61	+.52	+.052	+.67	+121		



- A clean-made, stylish Feature son with top performance
- Daughters should be exceptional out of this bull

**24 SRS BLOCKBUSTER 283K**  
tattoo: 283K birth: 02/14/22 reg: +20482062

**ANGUS BULL**

Soo Line Motive 9016#  
**SRS Blockbuster 2256B**  
SRS Rose 2256Z

HF Kodiak 5R  
TLA Beauty 5R  
Tombstone 050#  
S R S Rose 6148S#  
Sitz Upward 307R#  
Mytty Countess 906  
Vermilion Yellowstone#  
Basin Pride 7089

Birth Weight	86
205 Weight	725
Weaning Rat	ET
Sire Avg BW	98@84
Dam Avg BW	9@86
Dam WN Prod	8@106

Tombstone 050#  
**SRS Pride 2244Z**  
Basin Pride 953R#

Angus Association EPDs						
CED	BW	WW	YW	SC	HP	Milk
+6	+1.4	+73	+125	-.56	+16.4	+26
Marb	RE	Fat	\$W	\$B		
+.32	+.65	+.038	+.70	+135		



- A thick-made, attractive-patterned Blockbuster calf
- Blockbuster is a go to herdsire at SRS
- We continue to use him as we admire his heavy muscling, structural correctness, exceptional feet, and stylish nature which he transmits to his progeny
- His daughters are absolutely gorgeous females with perfect udders
- This donor dam's daughters continue to rise to the top of the herd



LOT 23

**23 SRS FEATURE 9279K**  
tattoo: 9279K birth: 02/05/22 reg: 20437878

**ANGUS BULL**

Musgrave Sky High 1535  
Musgrave Feature  
Musgrave Pride 1416-166

Musgrave Big Sky#  
Flag Queen W 00649  
Mogck Bullseye#  
Waters Pride Rose 166  
Summitcrest Complete 1P55#  
Summitcrest Princess 0P12#  
Quaker Hill Rampage 0A36#  
S R S Kathy 0394N#

Birth Weight	85
205 Weight	704
Weaning Rat	99
Sire Avg BW	182@85
Dam Avg BW	2@77
Dam WN Prod	2@96

KM Broken Bow 002#  
**SRS Kathy 9279G**  
SRS Kathy 7224E

Angus Association EPDs						
CED	BW	WW	YW	SC	HP	Milk
+6	+1.9	+76	+138	+.69	+12.8	+32
Marb	RE	Fat	\$W	\$B		
+.45	+.62	+.030	+.74	+143		



- A thick, square-hipped bull



REFERENCE SIRE

SRS Blockbuster 2256B





**25** **SRS HEADLINE 9300K**  
 tattoo: 9300K birth: 02/08/22 reg: 20437881

**ANGUS BULL**  
 Musgrave 316 Stunner  
**SRS Headline 2277H**  
 SRS Rose 2277Z#

SRS Blockbuster 2256B  
**SRS Rose 9300G**  
 S R S Rose 8128U

LD Capitalist 316  
 MCATL Blackbird 831-1378#  
 Tombstone 050#  
 S R S Rose 0119X  
 Soo Line Motive 9016#  
 SRS Rose 2256Z  
 Connealy Onward#  
 Vermilion Rose 7566#

Birth Weight	84
205 Weight	733
Weaning Rat	103
Sire Avg BW	44@85
Dam Avg BW	2@80
Dam WN Prod	2@102

Angus Association EPDs						
CED	BW	WW	YW	SC	HP	Milk
+6	+1.9	+78	+127	+98	+13.3	+34
Marb	RE	Fat	\$W	\$B		
+0.26	+0.47	+0.030	+84	+112		

**ANGUS GS**  
 Powered by iGenetic  
 VIDEO

- A big weaning weight bull that is soft-made and wide-topped with a great look
- His dam is a promising young cow with a perfect udder



SRS Headline 2277H



SRS Merit 9300J  
 Maternal Brother to Lot 25

SRS

“The countless hours Skinners have spent looking for their herd sires and the criteria they require for a cow to be in their herd takes a lot of the guesswork out of bull buying.”

- Chad Pratt, ID



**26****SRS HEADLINE 8289K**

tattoo: 8289K birth: 01/29/22 reg: 20437846

**ANGUS BULL**Musgrave 316 Stunner  
**SRS Headline 2277H**  
SRS Rose 2277Z#LD Capitalist 316  
MCATL Blackbird 831-1378#  
Tombstone 050#  
S R S Rose 0119X

HA Cowboy Up 5405#

HA Outside 3008  
HA Blackcap Lady 1602#**SRS Joyce 8289F**

Basin Joyce S474#

Brooks Ext 792#  
Basin Joyce 2264

Birth Weight	<b>85</b>
205 Weight	<b>706</b>
Weaning Rat	<b>100</b>
Sire Avg BW	<b>44@85</b>
Dam Avg BW	<b>3@84</b>
Dam WN Prod	<b>3@99</b>

Angus Association EPDs						
CED	BW	WW	YW	SC	HP	Milk
<b>+7</b>	<b>+1.1</b>	<b>+74</b>	<b>+115</b>	<b>+1.00</b>	<b>+11.8</b>	<b>+26</b>
Marb	RE	Fat	\$W	\$B		
<b>+0.36</b>	<b>+0.44</b>	<b>-0.003</b>	<b>+72</b>	<b>+117</b>		

REFERENCE  
SIRE

SRS Glacier 2256G

- A stout-designed bull out of a great uddered cow

MATERNAL  
BROTHERSRS Entice 8289H  
Maternal Brother to Lot 26**LOTS 27 -28****FLUSH BROTHERS**

- Long-spined, correct made brothers with eye appeal
- Dam is the mother to SRS Honest and she continues to produce extremely stylish progeny

**27****SRS GLACIER 6155K**

tattoo: 6155K birth: 02/05/22 reg: +20437927

**ANGUS BULL**LD Capitalist 316  
**SRS Glacier 2256G**  
SRS Rose 2256ZConnealy Capitalist 028#  
LD Dixie Erica 2053  
Tombstone 050#  
S R S Rose 6148S#Koupals B&B Identity#  
**WK Blackbird 2224#**  
WK Blackbird 5066Sitz Upward 307R#  
B&B Erica 605#  
Connealy Network  
TC Blackbird 0127

Birth Weight	<b>76</b>
205 Weight	<b>749</b>
Weaning Rat	<b>ET</b>
Sire Avg BW	<b>70@76</b>
Dam Avg BW	<b>9@77</b>
Dam WN Prod	<b>9@101</b>

Angus Association EPDs						
CED	BW	WW	YW	SC	HP	Milk
<b>+12</b>	<b>-1.2</b>	<b>+54</b>	<b>+98</b>	<b>+0.83</b>	<b>+13.9</b>	<b>+37</b>
Marb	RE	Fat	\$W	\$B		
<b>+0.42</b>	<b>+0.51</b>	<b>+0.031</b>	<b>+67</b>	<b>+125</b>		



Heifer Bull Potential

**28****SRS GLACIER 3162K**

tattoo: 3162K birth: 02/04/22 reg: +20437903

**ANGUS BULL**Sire: **SRS Glacier 2256G**Dam: **WK Blackbird 2224#**

Birth Weight	<b>76</b>
205 Weight	<b>721</b>
Weaning Rat	<b>ET</b>

Angus Association EPDs						
CED	BW	WW	YW	SC	HP	Milk
<b>+13</b>	<b>-1.9</b>	<b>+46</b>	<b>+74</b>	<b>+0.96</b>	<b>+12.0</b>	<b>+31</b>
Marb	RE	Fat	\$W	\$B		
<b>+0.74</b>	<b>+0.26</b>	<b>+0.046</b>	<b>+59</b>	<b>+101</b>		



Heifer Bull Potential

REFERENCE  
DAMWK Blackbird 2224  
Pathfinder Dam of Lots 27 and 28

Angus Avg EPDs Non-Parent Bulls CED +6 BW +1.2 WW +61 YW +108 SC +0.86 HP +11.8 Milk +27 Marb +0.63 RE +0.62 Fat +0.013 \$W +57 \$B +138

# LOTS 29 - 31

## FLUSH BROTHERS

- A very consistent set of flush brothers that have lots of style
- These bulls will leave daughters with a lot of value
- Historic was our high-selling bull in 2021 and has seen heavy use back in our herd the last two years
- His progeny are big-bodied and long-sided with lots of thickness
- We used Historic to add softness and improve marbling, yet staying consistent with our program, he is backed by a phenomenal dam
- Dam to these brothers is a beautifully-patterned Impression daughter with excellent feet and great production



SRS Historic 2208H



Deep Creek Imp Lass 6101  
Dam of Lots 29 - 31

**29** **SRS HISTORIC 410K**  
tattoo: 410K birth: 02/16/22 reg: +20443225

**ANGUS BULL**  
Hoover No Doubt  
**SRS Historic 2208H**  
SRS Joyce 2208Z

Mogck Bullseye#  
Miss Blackcap Ellston J2  
Tombstone 050#  
Basin Joyce S474#

Connealy Impression 540C  
**Deep Creek Imp Lass 6101**  
Deep Creek RNR Lass 334

Connealy Impression#  
Aleena of Conanga 1164#  
Deep Creek Rock N Roll 123  
Deep Creek Total Lass 701#

Birth Weight	89
205 Weight	696
Weaning Rat	ET
Sire Avg BW	43@90
Dam Avg BW	na
Dam WN Prod	2@116

Angus Association EPDs						
CED	BW	WW	YW	SC	HP	Milk
-3	+4.1	+76	+133	+1.01	+8.6	+23
Marb	RE	Fat	\$W	\$B		
+0.61	+0.71	-0.007	+0.61	+1.60		

**ANGUSGS**  
Powered by Neogen GenesCook  
VIDEO

**30** **SRS HISTORIC 6112K**  
tattoo: 6112K birth: 02/05/22 reg: +20443227

**ANGUS BULL**  
Sire: **SRS Historic 2208H**  
Dam: **Deep Creek Imp Lass 6101**

Birth Weight	89
205 Weight	759
Weaning Rat	ET

Angus Association EPDs						
CED	BW	WW	YW	SC	HP	Milk
+2	+3.5	+67	+116	+1.50	+11.6	+24
Marb	RE	Fat	\$W	\$B		
+0.50	+0.37	-0.008	+0.57	+1.30		

**ANGUSGS**  
Powered by Neogen GenesCook  
VIDEO

**31** **SRS HISTORIC 6111K**  
tattoo: 6111K birth: 02/16/22 reg: +20443226

**ANGUS BULL**  
Sire: **SRS Historic 2208H**  
Dam: **Deep Creek Imp Lass 6101**

Birth Weight	89
205 Weight	707
Weaning Rat	ET

Angus Association EPDs						
CED	BW	WW	YW	SC	HP	Milk
-3	+2.9	+63	+105	+0.35	+11.2	+19
Marb	RE	Fat	\$W	\$B		
+0.42	+0.69	+0.000	+0.55	+1.30		

**ANGUSGS**  
Powered by Neogen GenesCook  
VIDEO

**32****SRS HISTORIC 7269K**

tattoo: 7269K birth: 02/02/22 reg: 20437801

**ANGUS BULL**Hoover No Doubt  
**SRS Historic 2208H**  
SRS Joyce 2208ZMogck Bullseye#  
Miss Blackcap Ellston J2  
Tombstone 050#  
Basin Joyce S474#Connealy Final Product#  
SITZ Emma E 1861#  
Musgrave Foundation#  
S R S Pride 6144S

Birth Weight	102
205 Weight	741
Weaning Rat	105
Sire Avg BW	43@90
Dam Avg BW	4@81
Dam WN Prod	4@104

Sitz Brigade 12074  
**SRS Pride 7269E**  
SRS Pride 4259B

Angus Association EPDs						
CED	BW	WW	YW	SC	HP	Milk
-5	+4.8	+76	+130	+5.5	+11.2	+22
Marb	RE	Fat	\$W	\$B		
+4.1	+92	-.002	+58	+159		



- A very long, soft-made bull that is powerfully designed
- Dam is a moderate, stylish young cow



Angus Bulls

**33****SRS FEATURE 3213K**

tattoo: 3213K birth: 02/17/22 reg: 20437690

**ANGUS BULL**Musgrave Feature  
**3C Feature 0151**  
3C Queen on Duty 1619Musgrave Sky High 1535  
Musgrave Pride 1416-166  
R B Tour Of Duty 177#  
3C Queen Solution 69S Alliance 3313  
S Gloria 464#  
Brooks Ext 792#  
Basin Joyce 2264

Birth Weight	81
205 Weight	748
Weaning Rat	106
Sire Avg BW	10@96
Dam Avg BW	8@80
Dam WN Prod	8@100

S Chisum 6175#  
**SRS Joyce 3213a**  
Basin Joyce S474#

Angus Association EPDs						
CED	BW	WW	YW	SC	HP	Milk
+5	+2.3	+73	+122	+5.2	+9.9	+32
Marb	RE	Fat	\$W	\$B		
+1.5	+88	-.016	+73	+136		



- A big-ribbed densely made bull
- 3C Feature was our pick out of 3C's 2020 bull sale
- This bull transmits lots of length and performance into his progeny
- Dam is a broody, well-designed 10 year old cow

**34****SRS HONEST 0286K**

tattoo: 0286K birth: 02/02/22 reg: 20437781

**ANGUS BULL**SRS Blockbuster 2256B  
**SRS Honest 3136H**  
WK Blackbird 2224#Soo Line Motive 9016#  
SRS Rose 2256Z  
Koupals B&B Identity#  
WK Blackbird 5066SydGen Enhance  
MOGCK Erica 2255#  
SRS Balance 0609B  
SRS Lass 3242a

Birth Weight	89
205 Weight	789
Weaning Rat	111
Sire Avg BW	38@81
Dam Avg BW	1@89
Dam WN Prod	1@111

MOGCK Entice  
**SRS Lass 0286H**  
SRS Lass 8246F

Angus Association EPDs						
CED	BW	WW	YW	SC	HP	Milk
-1	+3.1	+80	+133	+4	+15.1	+28
Marb	RE	Fat	\$W	\$B		
+4.0	+67	+0.28	+75	+124		



- A long-made, level-designed bull, that is clean made
- SRS Honest is a bull we used due to his incredible look and balance
- We used Honest heavily on our heifers and his progeny averaged over 103 index at 205
- Honest calves are exceeding our high expectations
- Expect Honest progeny to wean heavy while moderating mature size

SRS Joyce 3213A  
Dam of Lot 33

SRS Honest 3136H

SRS

“We have always found Ron and his family extremely helpful and knowledgeable and they stand behind their program 100%.”  
- Miller Angus Ranch, ID

”



**35** **SRS HONEST 635K**  
 tattoo: 635K birth: 02/25/22 reg: +20437929

**ANGUS BULL**  
 SRS Blockbuster 2256B Soo Line Motive 9016#  
**SRS Honest 3136H** SRS Rose 2256Z  
 WK Blackbird 2224# Koupals B&B Identity#  
 WK Blackbird 5066

Stevenson Rockmount RX933# MCC Daybreak#  
**SRS Rose 6276D#** FSHK Pride 180#  
 S R S Rose 6146S S A V 004 Density 4336#  
 Vermilion Rose 7566#

Birth Weight	92
205 Weight	751
Weaning Rat	ET
Sire Avg BW	38@81
Dam Avg BW	5@79
Dam WN Prod	5@106

**36** **SRS HONEST 0210K**  
 tattoo: 0210K birth: 01/14/22 reg: 20437747

**ANGUS BULL**  
 SRS Blockbuster 2256B Soo Line Motive 9016#  
**SRS Honest 3136H** SRS Rose 2256Z  
 WK Blackbird 2224# Koupals B&B Identity#  
 WK Blackbird 5066

Musgrave Feature Musgrave Sky High 1535  
**SRS Pride 0210H** Musgrave Pride 1416-166  
 SRS Pride 2244Z Tombstone 050#  
 Basin Pride 953R#

Birth Weight	78
205 Weight	755
Weaning Rat	106
Sire Avg BW	38@81
Dam Avg BW	1@78
Dam WN Prod	1@106

Angus Association EPDs						
CED	BW	WW	YW	SC	HP	Milk
+7	+1.2	+68	+115	+69	+13.4	+28
Marb	RE	Fat	\$W	\$B		
+0.01	+0.40	+0.035	+73	+101		



**Heifer Bull Potential**

- A level-designed bull out of a broody big spread Pathfinder donor cow

Angus Association EPDs						
CED	BW	WW	YW	SC	HP	Milk
+10	+1.5	+75	+118	+36	+14.3	+25
Marb	RE	Fat	\$W	\$B		
+0.26	+0.79	-0.011	+74	+101		



**Heifer Bull Potential**

- Great patterned bull out of a beautiful first calf heifer



**MATERNAL BROTHER**

SRS Entice 6276H

**37** **SRS HONEST 2213K**  
 tattoo: 2213K birth: 01/29/22 reg: 20437667

**ANGUS BULL**  
 SRS Blockbuster 2256B Soo Line Motive 9016#  
**SRS Honest 3136H** SRS Rose 2256Z  
 WK Blackbird 2224# Koupals B&B Identity#  
 WK Blackbird 5066

Sitz Uncommon# Sitz Upward 307R#  
**SRS Pride 2213Z** Sitz Ellunas Elite 1697  
 Vermilion K Pride 8300 Leachman Right Time#  
 Vermilion K Pride 7045

Birth Weight	75
205 Weight	683
Weaning Rat	96
Sire Avg BW	38@81
Dam Avg BW	9@79
Dam WN Prod	8@99

Angus Association EPDs						
CED	BW	WW	YW	SC	HP	Milk
+8	+0.3	+58	+91	+31	+16.3	+23
Marb	RE	Fat	\$W	\$B		
+0.28	+0.48	+0.002	+61	+111		



**Heifer Bull Potential**



From year one, we were impressed with the vigor and will-to-live of the baby calves. It's very unusual to have any type of calving problem. These really are problem-free cattle.

The maternal traits they emphasize, such as soundness, good udders and longevity are very predictable in females sired by their bulls and retained in the herd.

They are trustworthy and really care about their customers' satisfaction. Skinner Ranch Seedstock bulls prove their value in our herd and they are the only kind we own.

- Bill & Penny Root, NE

**38****SRS GLACIER 8151K**

tattoo: 8151K birth: 02/05/22 reg: +20437937

**ANGUS BULL**LD Capitalist 316  
**SRS Glacier 2256G**  
SRS Rose 2256ZConnealy Capitalist 028#  
LD Dixie Erica 2053  
Tombstone 050#  
S R S Rose 6148S#  
Sitz Upward 307R#  
B&B Erica 605#  
Connealy Network  
TC Blackbird 0127

Birth Weight	<b>76</b>
205 Weight	<b>719</b>
Weaning Rat	<b>ET</b>
Sire Avg BW	<b>70@76</b>
Dam Avg BW	<b>9@77</b>
Dam WN Prod	<b>9@101</b>

Angus Association EPDs						
CED	BW	WW	YW	SC	HP	Milk
<b>+7</b>	<b>+0.5</b>	<b>+63</b>	<b>+118</b>	<b>+1.94</b>	<b>+12.8</b>	<b>+38</b>
Marb	RE	Fat	\$W	\$B		
<b>+0.43</b>	<b>+0.27</b>	<b>+0.057</b>	<b>+70</b>	<b>+115</b>		

**Heifer Bull Potential**

- Long-spined, correct made bull with eye appeal
- Dam is the mother to SRS Honest and she continues to produce extremely stylish progeny

**40****SRS GLACIER O250K**

tattoo: 0250K birth: 01/18/22 reg: 20439488

**ANGUS BULL**LD Capitalist 316  
**SRS Glacier 2256G**  
SRS Rose 2256ZConnealy Capitalist 028#  
LD Dixie Erica 2053  
Tombstone 050#  
S R S Rose 6148S#  
Musgrave Feature  
Musgrave Sky High 1535  
Musgrave Pride 1416-166  
S Chisum 6175#  
Basin Joyce S474#

Birth Weight	<b>68</b>
205 Weight	<b>734</b>
Weaning Rat	<b>109</b>
Sire Avg BW	<b>70@76</b>
Dam Avg BW	<b>1@68</b>
Dam WN Prod	<b>1@109</b>

Angus Association EPDs						
CED	BW	WW	YW	SC	HP	Milk
<b>+8</b>	<b>+0.0</b>	<b>+45</b>	<b>+81</b>	<b>+2.1</b>	<b>+12.7</b>	<b>+21</b>
Marb	RE	Fat	\$W	\$B		
<b>+0.20</b>	<b>+0.48</b>	<b>+0.040</b>	<b>+42</b>	<b>+93</b>		

**Heifer Bull Potential**

An attractive patterned bull that is out of an ideal first calf heifer

**39****SRS GLACIER 9272K**

tattoo: 9272K birth: 02/06/22 reg: 20437866

**ANGUS BULL**LD Capitalist 316  
**SRS Glacier 2256G**  
SRS Rose 2256ZConnealy Capitalist 028#  
LD Dixie Erica 2053  
Tombstone 050#  
S R S Rose 6148S#  
LD Capitalist 316  
MA Black Bess 642#  
SRS Accolade 0336a  
SRS Blanche 3219a

Birth Weight	<b>84</b>
205 Weight	<b>722</b>
Weaning Rat	<b>102</b>
Sire Avg BW	<b>70@76</b>
Dam Avg BW	<b>2@77</b>
Dam WN Prod	<b>2@100</b>

Angus Association EPDs						
CED	BW	WW	YW	SC	HP	Milk
<b>+5</b>	<b>+2.0</b>	<b>+65</b>	<b>+110</b>	<b>+0.28</b>	<b>+8.1</b>	<b>+26</b>
Marb	RE	Fat	\$W	\$B		
<b>+0.20</b>	<b>+0.60</b>	<b>+0.024</b>	<b>+58</b>	<b>+108</b>		



- SRS Glacier was the high selling bull in our 2020 sale
- He excels at producing light birthweight progeny with a lot of eye appeal
- His first daughters have a great maternal look, they are long made and have beautiful udders

SRS Joyce 0250H  
Dam of Lot 40



LOT  
**41**

**41 SRS STELLAR 5207K**

tattoo: 5207K birth: 01/25/22 reg: 20457320

**ANGUS BULL**

Mohnen Substantial 272# Benfield Substance 8506#  
Sitz Stellar 726D Mohnen Glyn Mawr Elba 1758  
SITZ Pride 200B Connealy Final Product#  
Sitz Pride 308Y#

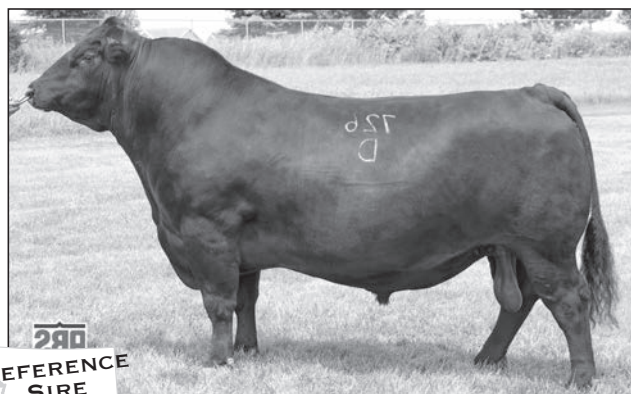
Tombstone 050# Sitz Upward 307R#  
**SRS Pride 5207C#** Mytty Countess 906  
Vermilion Pride 8071 Leachman Right Time#  
Vermilion Pride 6446#

Birth Weight	87
205 Weight	775
Weaning Rat	109
Sire Avg BW	26@83
Dam Avg BW	6@83
Dam WN Prod	6@108

Angus Association EPDs						
CED	BW	WW	YW	SC	HP	Milk
+2	+0.9	+76	+134	+1.52	+13.4	+27
Marb	RE	Fat	\$W	\$B		
+0.44	+0.46	+0.058	+72	+138		



- A huge performing bull that is as long and deep as any you will find in the sale
- His Pathfinder dam has an exceptional udder and doesn't miss
- Stellar needs little introduction
- He is a widely used sire that is know for producing great feet and daughters with beautiful udders



**290**  
REFERENCE  
SIRE

Sitz Stellar 726D



MATERNAL  
BROTHER

SRS Feature 5207J

**42 SRS STELLAR 9255K**

tattoo: 9255K birth: 02/03/22 reg: 20457311

**ANGUS BULL**

Mohnen Substantial 272# Benfield Substance 8506#  
**Sitz Stellar 726D** Mohnen Glyn Mawr Elba 1758  
SITZ Pride 200B Connealy Final Product#  
Sitz Pride 308Y#

Ellingson Homestead 6030 CTS Remedy 1T01#  
**SRS Juice 9255G** EA Erica 1082  
SRS Juice 4227B SRS Ringo 748Z  
S R S Juice 0126X

Birth Weight	90
205 Weight	715
Weaning Rat	101
Sire Avg BW	26@83
Dam Avg BW	2@85
Dam WN Prod	2@99

Angus Association EPDs						
CED	BW	WW	YW	SC	HP	Milk
+9	+0.0	+66	+129	+1.18	+17.2	+28
Marb	RE	Fat	\$W	\$B		
+0.36	+0.51	+0.079	+63	+129		



**Heifer Bull Potential**

- A long-spined, soggy made bull

**43 SRS STELLAR 6109K**

tattoo: 6109K birth: 02/14/22 reg: +20472352

**ANGUS BULL**

Mohnen Substantial 272# Benfield Substance 8506#  
**Sitz Stellar 726D** Mohnen Glyn Mawr Elba 1758  
SITZ Pride 200B Connealy Final Product#  
Sitz Pride 308Y#

Tombstone 050# Sitz Upward 307R#  
**SRS Joyce 2208Z** Mytty Countess 906  
Basin Joyce S474# Brooks Ext 792#  
Basin Joyce 2264

Birth Weight	88
205 Weight	696
Weaning Rat	ET
Sire Avg BW	26@83
Dam Avg BW	7@78
Dam WN Prod	7@102

Angus Association EPDs						
CED	BW	WW	YW	SC	HP	Milk
+0	+0.9	+71	+113	+1.16	+16.2	+24
Marb	RE	Fat	\$W	\$B		
+0.68	+0.38	+0.042	+73	+140		



- A well-balanced bull that catches your eye from the profile
- Maternal brother to SRS Historic



REFERENCE  
DAM

SRS Joyce 2208Z, Dam of Lot 43

**44 SRS STELLAR 9248K**

tattoo: 9248K birth: 02/01/22 reg: 20457308

**ANGUS BULL**

Mohnen Substantial 272# Benfield Substance 8506#  
**Sitz Stellar 726D** Mohnen Glyn Mawr Elba 1758  
SITZ Pride 200B Connealy Final Product#  
Sitz Pride 308Y#

Ellingson Homestead 6030 CTS Remedy 1T01#  
**SRS Manor 9248G** EA Erica 1082  
SRS Manor 3200a SRS Yale 0309 Y  
Ox Bow Manor 5155

Birth Weight	86
205 Weight	680
Weaning Rat	96
Sire Avg BW	26@83
Dam Avg BW	2@78
Dam WN Prod	2@98

Angus Association EPDs						
CED	BW	WW	YW	SC	HP	Milk
-1	+2.3	+78	+149	+1.05	+12.4	+24
Marb	RE	Fat	\$W	\$B		
+0.44	+0.91	+0.052	+63	+160		



**45****SRS HISTORIC 8246K**

tattoo: 8246K birth: 02/05/22 reg: 20437832

**ANGUS BULL**Hoover No Doubt  
**SRS Historic 2208H**  
SRS Joyce 2208ZMogck Bullseye#  
Miss Blackcap Ellston J2  
Tombstone 050#  
Basin Joyce S474#  
Tombstone 050#  
Ox Bow Manor 443#  
Mytty 4-Stroke  
SRS Lass 1250Y

Birth Weight	100
205 Weight	748
Weaning Rat	106
Sire Avg BW	43@90
Dam Avg BW	3@87
Dam WN Prod	3@103

SRS Balance 0609B  
**SRS Lass 8246F**  
SRS Lass 3242a

Angus Association EPDs						
CED	BW	WW	YW	SC	HP	Milk
-4	+3.7	+73	+126	+1.22	+10.4	+28
Marb	RE	Fat	\$W	\$B		
+0.66	+0.42	+0.021	+63	+139		



- A powerfully-constructed Historic son
- Historic was our high-selling bull in 2021 and has seen heavy use back in our herd the last two years
- His progeny are big-bodied and long-sided with lots of thickness
- We used Historic to add softness and improve marbling, yet staying consistent with our program, he is backed by a phenomenal dam

**47****SRS HISTORIC 8233K**

tattoo: 8233K birth: 01/21/22 reg: 20437819

**ANGUS BULL**Hoover No Doubt  
**SRS Historic 2208H**  
SRS Joyce 2208ZMogck Bullseye#  
Miss Blackcap Ellston J2  
Tombstone 050#  
Basin Joyce S474#

Birth Weight	85
205 Weight	683
Weaning Rat	96
Sire Avg BW	43@90
Dam Avg BW	3@80
Dam WN Prod	3@100

HF Distinct 104D  
**SRS Blackbird 8233F**  
SRS Blackbird 1254YHF Defender 146B  
HF Echo 321Z  
Limestone Great Divide U254  
SRS Blackbird 9135W

Angus Association EPDs						
CED	BW	WW	YW	SC	HP	Milk
+1	+2.2	+67	+116	+9.1	+8.2	+22
Marb	RE	Fat	\$W	\$B		
+0.33	+0.77	+0.001	+56	+135		



- A square-made, thick bull with presence

REFERENCE  
SIRE

SRS Historic 2208H

**46****SRS HISTORIC 8223K**

tattoo: 8223K birth: 01/26/22 reg: 20437816

**ANGUS BULL**Hoover No Doubt  
**SRS Historic 2208H**  
SRS Joyce 2208ZMogck Bullseye#  
Miss Blackcap Ellston J2  
Tombstone 050#  
Basin Joyce S474#

Birth Weight	89
205 Weight	689
Weaning Rat	97
Sire Avg BW	43@90
Dam Avg BW	3@86
Dam WN Prod	3@99

SRS Balance 0609B  
**SRS Barbaramere Jet 8223F**  
Ox Bow Barbaramere Jet 842#Tombstone 050#  
Ox Bow Manor 443#  
Sitz Tradition RLS 8702#  
Ox Bow Barbaramere Jet 5129#

Angus Association EPDs						
CED	BW	WW	YW	SC	HP	Milk
-2	+3.3	+78	+144	+1.29	+10.2	+26
Marb	RE	Fat	\$W	\$B		
+0.48	+0.46	+0.024	+62	+162		



- An attractive, big-middled bull

**48****SRS HISTORIC 8209K**

tattoo: 8209K birth: 01/20/22 reg: 20437811

**ANGUS BULL**Hoover No Doubt  
**SRS Historic 2208H**  
SRS Joyce 2208ZMogck Bullseye#  
Miss Blackcap Ellston J2  
Tombstone 050#  
Basin Joyce S474#

Birth Weight	84
205 Weight	710
Weaning Rat	100
Sire Avg BW	43@90
Dam Avg BW	3@83
Dam WN Prod	3@99

SRS Blockbuster 2256B  
**SRS Manor 8209F**  
Ox Bow Manor 443#Soo Line Motive 9016#  
SRS Rose 2256Z  
N Bar Emulation EXT#  
Ox Bow Manor 037

Angus Association EPDs						
CED	BW	WW	YW	SC	HP	Milk
+4	+1.8	+68	+135	+6.2	+8.0	+21
Marb	RE	Fat	\$W	\$B		
+0.28	+0.31	+0.019	+55	+148		



- A long-made, level-designed bull

REFERENCE  
DAMDeep Creek Imp Lass 6101  
Dam of Lots 29 - 31, 49**49****SRS HISTORIC 404K**

tattoo: 404K birth: 02/20/22 reg: +20443101

**ANGUS BULL**Hoover No Doubt  
**SRS Historic 2208H**  
SRS Joyce 2208ZMogck Bullseye#  
Miss Blackcap Ellston J2  
Tombstone 050#  
Basin Joyce S474#

Birth Weight	89
205 Weight	773
Weaning Rat	ET
Sire Avg BW	43@90
Dam Avg BW	na
Dam WN Prod	2@116

Connealy Impression 540C  
**Deep Creek Imp Lass 6101**  
Deep Creek RNR Lass 334Connealy Impression#  
Aleena of Conanga 1164#  
Deep Creek Rock N Roll 123  
Deep Creek Total Lass 701#

Angus Association EPDs						
CED	BW	WW	YW	SC	HP	Milk
+2	+1.3	+50	+90	+9.3	+8.9	+24
Marb	RE	Fat	\$W	\$B		
+0.40	+0.33	+0.041	+47	+115		



- Embryo brother to 29-31 and 83-84

**Balancing traits for over four decades,  
emphasizing real-world cattle with  
these essential traits:**



***good feet and legs***



***udder quality***







***tight sheath***



***good disposition***



**At Skinner Ranch,  
these traits are not optional.**



LOT  
**50**

**50** **SRS HEADLINE 3266K**  
 tattoo: 3266K birth: 02/21/22 reg: 20437699

<b>ANGUS BULL</b> Musgrave 316 Stunner	LD Capitalist 316 MCATL Blackbird 831-1378#	Birth Weight <b>92</b>
<b>SRS Headline 2277H</b> SRS Rose 2277Z#	Tombstone 050# S R S Rose 0119X	205 Weight <b>754</b>
Mytty 4-Stroke	Mytty ForeFront 77P Mytty Rita U318#	Weaning Rat <b>106</b>
<b>SRS Rose 3266a#</b> S R S Rose 0119X	S R S Trademark 732T S R S Rose 6146S	Sire Avg BW <b>44@85</b>
		Dam Avg BW <b>8@86</b>
		Dam WN Prod <b>8@105</b>

Angus Association EPDs						
CED	BW	WW	YW	SC	HP	Milk
<b>+9</b>	<b>-0.2</b>	<b>+68</b>	<b>+102</b>	<b>+1.58</b>	<b>+9.1</b>	<b>+30</b>
Marb	RE	Fat	\$W	\$B		
<b>+.45</b>	<b>+.47</b>	<b>+0.036</b>	<b>+78</b>	<b>+117</b>		

**ANGUSGS**  
Powered by Heron Genetics

VIDEO

**Heifer Bull Potential**

- A balanced, correct made bull out of an extremely long, feminine-fronted 10 year old pathfinder
- SRS Headline is a bull we used back in our herd due to his impressive look and outstanding dam
- Headline had impressive performance from birth through yearling
- Headline's dam is still producing at 11 years of age and has an impeccable udder and feet



REFERENCE  
SIRE

SRS Headline 2277H

**51** **SRS HEADLINE 8245K**  
 tattoo: 8245K birth: 02/02/22 reg: 20437830

<b>ANGUS BULL</b> Musgrave 316 Stunner	LD Capitalist 316 MCATL Blackbird 831-1378#	Birth Weight <b>88</b>
<b>SRS Headline 2277H</b> SRS Rose 2277Z#	Tombstone 050# S R S Rose 0119X	205 Weight <b>741</b>
HF Distinct 104D	HF Defender 146B HF Echo 321Z	Weaning Rat <b>105</b>
<b>SRS Rose 8245F</b> SRS Rose 3234a	B P F Special Focus 504# S R S Rose 1233Y	Sire Avg BW <b>44@85</b>
		Dam Avg BW <b>3@81</b>
		Dam WN Prod <b>2@102</b>

Angus Association EPDs						
CED	BW	WW	YW	SC	HP	Milk
<b>+8</b>	<b>+0.0</b>	<b>+68</b>	<b>+108</b>	<b>+1.13</b>	<b>+18.3</b>	<b>+40</b>
Marb	RE	Fat	\$W	\$B		
<b>+.28</b>	<b>+.62</b>	<b>+0.032</b>	<b>+88</b>	<b>+125</b>		

**ANGUSGS**  
Powered by Heron Genetics

VIDEO

- A rugged designed bull with added thickness
- Dam is a moderate young cow

**SRS**

“Our bull herd is now over 90 percent SRS blood lines...Calves are born between March 1st and April 15th. This last fall on the 2nd of November 100 percent of our steers loaded on the trucks with the average weight of 708 lbs.”

- Tracy & Kelly Mikes

# 52

## SRS HEADLINE 8294K

tattoo: 8294K birth: 02/01/22 reg: 20437849

### ANGUS BULL

Musgrave 316 Stunner  
SRS Headline 2277H  
SRS Rose 2277Z#

LD Capitalist 316  
MCATL Blackbird 831-1378#  
Tombstone 050#  
S R S Rose 0119X

Connealy Big Time 1251 7743  
SRS Blackbird 8294F  
S R S Blackbird 8137U

Connealy Consensus#  
Breeta of Conanga 525#  
Sitz Onward 495R  
Ox Bow Blackbird 888

Birth Weight	97
205 Weight	703
Weaning Rat	99
Sire Avg BW	44@85
Dam Avg BW	3@87
Dam WN Prod	3@98

Angus Association EPDs						
CED	BW	WW	YW	SC	HP	Milk
-3	+4.0	+75	+118	+1.72	+13.0	+27
Marb	RE	Fat	\$W	\$B		
+0.39	+0.56	+0.014	+65	+132		



# LOTS 54 - 56

## FLUSH BROTHERS

- A deep, consistent set of flush brothers
- Bulls that will leave you with a tremendous set of replacement heifers
- Musgrave Feature continues to produce the type and kind we appreciate here
- Progeny are long, correct, and stylish
- Features daughters are simply the type of females you want to have in your herd, they are beautifully designed, have a great maternal look, with excellent udders
- The donor dam is an eleven year old Pathfinder cow that has never missed
- She is long, feminine-fronted with excellent feet and an impeccable udder

# 53

## SRS HEADLINE 506K

tattoo: 506K birth: 02/16/22 reg: +20437923

### ANGUS BULL

Musgrave 316 Stunner  
SRS Headline 2277H  
SRS Rose 2277Z#

LD Capitalist 316  
MCATL Blackbird 831-1378#  
Tombstone 050#  
S R S Rose 0119X

Sitz Onward 495R  
S R S Kathy 8140U  
Tar Kathy 8003

Connealy Onward#  
Sitz Pride 150  
G D A R Traveler 044#  
Tar Kathy 613

Birth Weight	87
205 Weight	669
Weaning Rat	ET
Sire Avg BW	44@85
Dam Avg BW	12@79
Dam WN Prod	12@102

Angus Association EPDs						
CED	BW	WW	YW	SC	HP	Milk
+5	+0.5	+47	+65	+1.60	+9.7	+32
Marb	RE	Fat	\$W	\$B		
+0.33	+0.31	+0.049	+62	+89		



- An attractive bull out of a 14 year old donor cow

# 54

## SRS FEATURE 2262K

tattoo: 2262K birth: 01/29/22 reg: +20437899

### ANGUS BULL

Musgrave Sky High 1535  
Musgrave Feature  
Musgrave Pride 1416-166

Musgrave Big Sky#  
Flag Queen W 00649  
Mogck Bullseye#  
Waters Pride Rose 166

Tombstone 050#  
SRS Rose 2277Z#  
S R S Rose 0119X

Sitz Upward 307R#  
Mytly Countess 906  
S R S Trademark 732T  
S R S Rose 6146S

Birth Weight	88
205 Weight	711
Weaning Rat	ET
Sire Avg BW	182@85
Dam Avg BW	9@95
Dam WN Prod	9@111

Angus Association EPDs						
CED	BW	WW	YW	SC	HP	Milk
+8	+2.7	+64	+115	+2.76	+13.1	+27
Marb	RE	Fat	\$W	\$B		
+0.47	+0.57	+0.011	+59	+118		



# 55

## SRS FEATURE 302K

tattoo: 302K birth: 02/13/22 reg: +20482063

### ANGUS BULL

Sire: Musgrave Feature  
Dam: SRS Rose 2277Z#

Birth Weight	88
205 Weight	686
Weaning Rat	ET

Angus Association EPDs						
CED	BW	WW	YW	SC	HP	Milk
+5	+2.3	+67	+111	+1.61	+19.3	+33
Marb	RE	Fat	\$W	\$B		
+0.46	+0.33	+0.047	+71	+117		



# 56

## SRS FEATURE 3175K

tattoo: 3175K birth: 02/06/22 reg: +20437906

### ANGUS BULL

Sire: Musgrave Feature  
Dam: SRS Rose 2277Z#

Birth Weight	88
205 Weight	752
Weaning Rat	ET

Angus Association EPDs						
CED	BW	WW	YW	SC	HP	Milk
+0	+2.5	+65	+103	+1.90	+10.4	+33
Marb	RE	Fat	\$W	\$B		
+0.45	+0.45	+0.056	+72	+107		



FULL BROTHER

SRS Feature 7154K

Lot 20 in this Sale and Full Brother to Lots 54 - 56





LOT 57

**59 SRS FEATURE 9204K**  
 tattoo: 9204K birth: 02/05/22 reg: 20437854

**ANGUS BULL**  
 Musgrave Sky High 1535 Musgrave Big Sky#  
 Flag Queen W 00649

**Musgrave Feature**  
 Musgrave Pride 1416-166 Mogck Bullseye#  
 Waters Pride Rose 166

SRS Blockbuster 2256B Soo Line Motive 9016#  
 SRS Rose 2256Z

**SRS Manor 9204G**  
 SRS Manor 4221B Tombstone 050#  
 Ox Bow Manor 443#

Birth Weight	94
205 Weight	684
Weaning Rat	96
Sire Avg BW	182@85
Dam Avg BW	2@88
Dam WN Prod	2@96

Angus Association EPDs						
CED	BW	WW	YW	SC	HP	Milk
+1	+2.8	+67	+112	+57	+16.1	+31
Marb	RE	Fat	\$W	\$B		
+0.74	+0.55	+0.027	+70	+138		



LOT 60

**60 SRS STELLAR 742K**  
 tattoo: 742K birth: 02/12/22 reg: +20472347

**ANGUS BULL**  
 Mohnen Substantial 272# Benfield Substance 8506#  
 Mohnen Glyn Mawr Elba 1758

**Sitz Stellar 726D**  
 SITZ Pride 200B Connealy Final Product#  
 Sitz Pride 308Y#

TC Total 410# Bon View New Design 208#  
 TC Erica Eileen 2047

**SRS Chloe 2205Z**  
 Basin Chloe 2P31# C A Future Direction 5321#  
 Basin Chloe 6102

Birth Weight	84
205 Weight	675
Weaning Rat	ET
Sire Avg BW	26@83
Dam Avg BW	7@90
Dam WN Prod	6@107

Angus Association EPDs						
CED	BW	WW	YW	SC	HP	Milk
+3	+1.7	+58	+102	-.01	+12.7	+24
Marb	RE	Fat	\$W	\$B		
+0.66	+0.51	+0.059	+55	+114		



- A solid made bull with eye appeal
- Stellar needs little introduction
- He is a widely used sire that is know for producing great feet and daughters with beautiful udders
- Picture perfect dam
- Not only is she ideal in her type and kind, she has the records to back it up



REFERENCE DAM

SRS Chloe 2205Z  
 Dam of Lot 60

**57 SRS FEATURE 9293K**  
 tattoo: 9293K birth: 02/26/22 reg: 20437879

**ANGUS BULL**  
 Musgrave Sky High 1535 Musgrave Big Sky#  
 Flag Queen W 00649

**Musgrave Feature**  
 Musgrave Pride 1416-166 Mogck Bullseye#  
 Waters Pride Rose 166

LD Capitalist 316 Connealy Capitalist 028#  
 SRS Pride 9293G LD Dixie Erica 2053

SRS Pride 7275E SRS Caliber 385C  
 SRS Pride 5247C#

Birth Weight	87
205 Weight	735
Weaning Rat	104
Sire Avg BW	182@85
Dam Avg BW	2@79
Dam WN Prod	2@104

Angus Association EPDs						
CED	BW	WW	YW	SC	HP	Milk
+3	+1.7	+58	+102	-.01	+12.7	+24
Marb	RE	Fat	\$W	\$B		
+0.66	+0.51	+0.059	+55	+114		



• An extremely stout, thick made bull

**58 SRS FEATURE 8235K**  
 tattoo: 8235K birth: 01/21/22 reg: 20437821

**ANGUS BULL**  
 Musgrave Sky High 1535 Musgrave Big Sky#  
 Flag Queen W 00649

**Musgrave Feature**  
 Musgrave Pride 1416-166 Mogck Bullseye#  
 Waters Pride Rose 166

HA Cowboy Up 5405# HA Outside 3008  
 HA Blackcap Lady 1602#

**SRS Chloe 8235F**  
 SRS Chloe 2205Z TC Total 410#  
 Basin Chloe 2P31#

Birth Weight	91
205 Weight	722
Weaning Rat	102
Sire Avg BW	182@85
Dam Avg BW	3@92
Dam WN Prod	3@107

Angus Association EPDs						
CED	BW	WW	YW	SC	HP	Milk
+6	+2.9	+61	+112	+1.34	+9.8	+27
Marb	RE	Fat	\$W	\$B		
+0.53	+0.58	+0.000	+55	+113		



MATERNAL BROTHER

SRS Stunner 8235H  
 Maternal Brother to Lot 58

**61****SRS STELLAR 730K**

tattoo: 730K birth: 02/07/22 reg: +20457340

**ANGUS BULL**

Mohnen Substantial 272#  
**Sitz Stellar 726D**  
 SITZ Pride 200B

Benfield Substance 8506#  
 Mohnen Glyn Mawr Elba 1758  
 Connealy Final Product#  
 Sitz Pride 308Y#

Musgrave Foundation#  
**SRS Blossom 4244B**  
 SRS Joyce 2208Z

Kessler's Frontman R001#  
 MCATL Blackcap Juara 29-434  
 Tombstone 050#  
 Basin Joyce S474#

Birth Weight	<b>82</b>
205 Weight	<b>631</b>
Weaning Rat	<b>ET</b>
Sire Avg BW	<b>26@83</b>
Dam Avg BW	<b>7@93</b>
Dam WN Prod	<b>7@113</b>

Angus Association EPDs						
CED	BW	WW	YW	SC	HP	Milk
+3	+0.7	+86	+150	+89	+12.4	+22
Marb	RE	Fat	\$W	\$B		
+0.54	+0.56	+0.040	+79	+148		



- Embryo brother to lot 16 & 17

**REFERENCE DAM**

SRS Blossom 4244B  
 Dam of Lot 61

**62****SRS STELLAR 7273K**

tattoo: 7273K birth: 01/26/22 reg: 20457316

**ANGUS BULL**

Mohnen Substantial 272#  
**Sitz Stellar 726D**  
 SITZ Pride 200B

Benfield Substance 8506#  
 Mohnen Glyn Mawr Elba 1758  
 Connealy Final Product#  
 Sitz Pride 308Y#

SRS Copyright 0302C  
**SRS Elba 7273E**  
 SRS Elba 5236C

Sitz Longevity 556Z#  
 S R S Kathy 7142T#  
 Mra Windy 3215  
 SRS Elba 1217 Y

Birth Weight	<b>94</b>
205 Weight	<b>709</b>
Weaning Rat	<b>100</b>
Sire Avg BW	<b>26@83</b>
Dam Avg BW	<b>4@81</b>
Dam WN Prod	<b>4@105</b>

Angus Association EPDs						
CED	BW	WW	YW	SC	HP	Milk
+3	+1.7	+80	+132	+1.32	+17.0	+25
Marb	RE	Fat	\$W	\$B		
+0.39	+0.52	+0.057	+76	+146		



- A long bull out of a high-production cow

**63****SRS STELLAR 5218K**

tattoo: 5218K birth: 02/07/22 reg: 20457321

**ANGUS BULL**

Mohnen Substantial 272#  
**Sitz Stellar 726D**  
 SITZ Pride 200B

Benfield Substance 8506#  
 Mohnen Glyn Mawr Elba 1758  
 Connealy Final Product#  
 Sitz Pride 308Y#

SRS Gunslinger 605Z  
**SRS Manor 5218C**  
 Ox Bow Manor 5155

Tombstone 050#  
 Basin Joyce S474#  
 N Bar Emulation EXT#  
 Ox Bow Manor 918#

Birth Weight	<b>81</b>
205 Weight	<b>703</b>
Weaning Rat	<b>99</b>
Sire Avg BW	<b>26@83</b>
Dam Avg BW	<b>6@81</b>
Dam WN Prod	<b>6@103</b>

Angus Association EPDs						
CED	BW	WW	YW	SC	HP	Milk
+5	-0.4	+49	+80	+0.52	+13.3	+27
Marb	RE	Fat	\$W	\$B		
+0.20	+0.37	+0.020	+60	+76		

**Heifer Bull Potential**

- A soggy-made well designed bull
- Dam is a beautifully designed cow with a perfect udder

**64****SRS ATLANTIS 7282K**

tattoo: 7282K birth: 01/29/22 reg: 20483564

**ANGUS BULL**

S A V Rainfall 6846  
**Square B Atlantis 8060**  
 Elbanna of Conanga 1209

Coleman Charlo 0256#  
 S A V Blackcap May 4136  
 Connealy Consensus#  
 Elbasta of Conanga 9703

SRS Copyright 0302C  
**SRS Forever Lady 7282E**  
 SRS Forever Lady 5287C

Sitz Longevity 556Z#  
 S R S Kathy 7142T#  
 SRS Zone Defense 755Z  
 Ox Bow Forever Lady 7228

Birth Weight	<b>88</b>
205 Weight	<b>696</b>
Weaning Rat	<b>98</b>
Sire Avg BW	<b>36@86</b>
Dam Avg BW	<b>4@74</b>
Dam WN Prod	<b>4@98</b>

Angus Association EPDs						
CED	BW	WW	YW	SC	HP	Milk
+0	+1.4	+58	+106	+1.22	+16.5	+52
Marb	RE	Fat	\$W	\$B		
+0.60	+0.51	+0.025	+74	+136		



- A long stout-featured bull

**65****SRS FORGE 6242K**

tattoo: 6242K birth: 02/24/22 reg: 20437798

**ANGUS BULL**

Connealy Capitalist 028#  
**PGC Forge**  
 PGC Shoeshone Girl 4106#

S A V Final Answer 0035#  
 Prides Pita of Conanga 8821  
 Sitz Upside 547W#  
 PGC Shoshone Girl 0229#

SRS Accolade 0336a  
**SRS Chloe 6242D**  
 SRS Chloe 3211a

S Chisum 6175#  
 Basin Joyce S474#  
 Sitz Uncommon#  
 Basin Chloe 4266

Birth Weight	<b>93</b>
205 Weight	<b>747</b>
Weaning Rat	<b>105</b>
Sire Avg BW	<b>71@85</b>
Dam Avg BW	<b>5@85</b>
Dam WN Prod	<b>5@101</b>

Angus Association EPDs						
CED	BW	WW	YW	SC	HP	Milk
+1	+3.5	+75	+116	+1.27	+15.6	+25
Marb	RE	Fat	\$W	\$B		
+0.44	+0.46	+0.015	+69	+133		



- A big performance bull





REFERENCE SIRE

Reich Ripper 37B

**LOTS 66 - 67  
FLUSH BROTHERS**

**66** **SRS RIPPER 7125K**  
tattoo: 7125K birth: 02/12/22 reg: +20444816

<b>ANGUS BULL</b>	DMM Riptide 87W	Birth Weight	<b>91</b>
DMM Riptide 2Z	DMM Dyna Blackcap 38X	205 Weight	<b>695</b>
<b>Reich Ripper 37B</b>	Duff 927K Movin Up 874	Weaning Rat	<b>ET</b>
Reich Pride 68Z	Reich Pride 77W	Sire Avg BW	<b>13@91</b>
Tombstone 050#	Sitz Upward 307R#	Dam Avg BW	<b>5@86</b>
<b>SRS Rose 2256Z</b>	Mytty Countess 906	Dam WN Prod	<b>4@122</b>
S R S Rose 6148S#	S A V 004 Density 4336#		
	Vermilion Rose 7566#		

Angus Association EPDs						
CED	BW	WW	YW	SC	HP	Milk
<b>+0</b>	<b>+2.8</b>	<b>+66</b>	<b>+105</b>	<b>+5.5</b>	<b>+10.7</b>	<b>+31</b>
Marb	RE	Fat	\$W	\$B		
<b>+52</b>	<b>+43</b>	<b>-012</b>	<b>+67</b>	<b>+131</b>		



• A stout, correct made bull that is a flush brother to Lot 5

**67** **SRS RIPPER 4154K**  
tattoo: 4154K birth: 02/08/22 reg: +20444793

<b>ANGUS BULL</b>	DMM Riptide 87W	Birth Weight	<b>91</b>
DMM Riptide 2Z	DMM Dyna Blackcap 38X	205 Weight	<b>726</b>
<b>Reich Ripper 37B</b>	Duff 927K Movin Up 874	Weaning Rat	<b>ET</b>
Reich Pride 68Z	Reich Pride 77W	Sire Avg BW	<b>13@91</b>
Tombstone 050#	Sitz Upward 307R#	Dam Avg BW	<b>5@86</b>
<b>SRS Rose 2256Z</b>	Mytty Countess 906	Dam WN Prod	<b>4@122</b>
S R S Rose 6148S#	S A V 004 Density 4336#		
	Vermilion Rose 7566#		

Angus Association EPDs						
CED	BW	WW	YW	SC	HP	Milk
<b>+6</b>	<b>+1.8</b>	<b>+47</b>	<b>+89</b>	<b>+7.0</b>	<b>+14.9</b>	<b>+39</b>
Marb	RE	Fat	\$W	\$B		
<b>+39</b>	<b>+53</b>	<b>+004</b>	<b>+55</b>	<b>+111</b>		



• OHC



MATERNAL BROTHER

SRS Stunner 728J  
Maternal Brother to Lots 66 - 67

**TWO YEAR OLD BULLS**

We have been wanting to offer some age-advantaged bulls for our customers and are extremely excited to offer a stout set of two-year olds that should be able to go out and cover a large set of cows. These are not no-sales from our 2022 bull sale. This is all our March calves from 2022 set of bulls along with all the bulls from one cooperater herd. It is also worth mentioning that we went in last fall and picked out all the bulls we thought were good enough quality to keep, we didn't keep poorer March calves just to feed up and make two-year olds. We did not offer them for sale to anyone, therefore these bulls have not been picked over. All of these bulls passed a semen test in January of 2022 as 10.5 month old calves, they will again be tested this February before the sale. They ran in our unirrigated foothills from April 1st until the middle of November. Buy with confidence that they are fertile and high-quality breeding bulls.



LOT 68

**68** **SRS ATLANTIS 2224J**  
tattoo: 2224J birth: 03/05/21 reg: 20132485

<b>ANGUS BULL</b>	S A V Rainfall 6846	Coleman Charlo 0256#	Birth Weight	<b>77</b>
<b>Square B Atlantis 8060</b>	Elbanna of Conanga 1209	S A V Blackcap May 4136	205 Weight	<b>723</b>
		Connealy Consensus#	Weaning Rat	<b>101</b>
		Elbasta of Conanga 9703	Sire Avg BW	<b>36@86</b>
Koupals B&B Identity#		Sitz Upward 307R#	Dam Avg BW	<b>9@77</b>
<b>WK Blackbird 2224#</b>		B&B Erica 605#	Dam WN Prod	<b>9@101</b>
WK Blackbird 5066		Connealy Network		
		TC Blackbird 0127		

Angus Association EPDs						
CED	BW	WW	YW	SC	HP	Milk
<b>+8</b>	<b>-1.1</b>	<b>+43</b>	<b>+78</b>	<b>+2.11</b>	<b>+14.8</b>	<b>+29</b>
Marb	RE	Fat	\$W	\$B		
<b>+59</b>	<b>+54</b>	<b>+027</b>	<b>+54</b>	<b>+94</b>		



**Heifer Bull Potential**

- An eye catching natural son out of donor cow 2224
- This bull was used on a small group of replacement heifers
- Maternal brother to SRS Honest and SRS Hallmark



REFERENCE SIRE

Square B Atlantis 8060



REFERENCE SIRE

SRS Fast Track 5283F



71 SRS FASTTRACK 8222J

**ANGUS BULL**  
 HF Distinct 104D HF Defender 146B  
**SRS Fast Track 5283F** HF Echo 321Z  
 SRS Elba 5283C# Connealy Black Granite#  
 S R S Elba 7141T  
 HA Cowboy Up 5405# HA Outside 3008  
**SRS Rose 8222F** HA Blackcap Lady 1602#  
 S R S Rose 7185T Connealy Onward#  
 Vermilion Rose 7566#

Angus Association EPDs						
CED	BW	WW	YW	SC	HP	Milk
+4	+0.9	+53	+97	+1.11	+9.8	+28
Marb	RE	Fat	\$W	\$B		
+1.12	+0.34	+0.034	+55	+107		

- A level-designed bull that has good performance
- His dam is an ideal young cow that is quickly proving her value

72 SRS FASTTRACK 8309J

**ANGUS BULL**  
 HF Distinct 104D HF Defender 146B  
**SRS Fast Track 5283F** HF Echo 321Z  
 SRS Elba 5283C# Connealy Black Granite#  
 S R S Elba 7141T  
 SRS Decree 5155D SRS Blockbuster 2256B  
**SRS Elba 8309F** Ox Bow Manor 5155  
 SRS Elba 6227D R B Tour Of Duty 177#  
 S R S Elba 0382N

Angus Association EPDs						
CED	BW	WW	YW	SC	HP	Milk
+5	+0.7	+66	+122	+0.24	+13.3	+29
Marb	RE	Fat	\$W	\$B		
+0.40	+0.32	+0.053	+61	+123		

- An extremely long-made, rugged-designed bull with great thickness
- Dam is a top producing young cow in our herd

69 SRS FASTTRACK 8213J

tattoo: 8213J birth: 03/06/21 reg: 20129074  
**ANGUS BULL**  
 HF Distinct 104D HF Defender 146B  
**SRS Fast Track 5283F** HF Echo 321Z  
 SRS Elba 5283C# Connealy Black Granite#  
 S R S Elba 7141T  
 SRS Gunslinger 605Z Tombstone 050#  
**SRS Rose 8213F** Basin Joyce S474#  
 S R S Rose 6148S# S A V 004 Density 4336#  
 Vermilion Rose 7566#

Angus Association EPDs						
CED	BW	WW	YW	SC	HP	Milk
-6	+4.0	+83	+140	+0.99	+12.8	+25
Marb	RE	Fat	\$W	\$B		
+0.01	+0.87	-0.010	+66	+151		

- A powerful bull that is long and thick
- SRS Fast Track is a bull we used due to his length and mass
- His mother was an eye-appealing Black Granite daughter that sold in our 2019 Female sale
- Fast Track sons have excellent feet
- Lot 69's dam is a long-designed female that is feminine-fronted and excellent uddered



70 SRS FASTTRACK 8289J

tattoo: 8289J birth: 03/02/21 reg: 20129087  
**ANGUS BULL**  
 HF Distinct 104D HF Defender 146B  
**SRS Fast Track 5283F** HF Echo 321Z  
 SRS Elba 5283C# Connealy Black Granite#  
 S R S Elba 7141T  
 HA Cowboy Up 5405# HA Outside 3008  
**SRS Joyce 8289F** HA Blackcap Lady 1602#  
 Basin Joyce S474# Brooks Ext 792#  
 Basin Joyce 2264

Angus Association EPDs						
CED	BW	WW	YW	SC	HP	Milk
-2	+3.9	+70	+104	+0.79	+10.2	+19
Marb	RE	Fat	\$W	\$B		
+0.03	+0.76	-0.045	+56	+117		

- Soggy, thick-made bull with good performance

### 73 SRS FASTTRACK 8227J

tattoo: 8227J birth: 03/02/21 reg: 20129075

**ANGUS BULL**

HF Distinct 104D  
**SRS Fast Track 5283F**  
 SRS Elba 5283C#  
 SRS Balance 0609B  
**SRS Barbaramere Jet 8227F**  
 Ox Bow Barbaramere Jet 842#

HF Defender 146B  
 HF Echo 321Z  
 Connealy Black Granite#  
 S R S Elba 7141T  
 Tombstone 050#  
 Ox Bow Manor 443#  
 Sitz Tradition RLS 8702#  
 Ox Bow Barbaramere Jet 5129#

Birth Weight	83
205 Weight	677
Weaning Rat	94
Sire Avg BW	27@85
Dam Avg BW	3@73
Dam WN Prod	3@93

Angus Association EPDs						
CED	BW	WW	YW	SC	HP	Milk
+4	+0.9	+54	+97	+88	+13.9	+24
Marb	RE	Fat	\$W	\$B		
-.2	+.50	+.018	+49	+104		



- A correct, square-made bull



**SRS Eastwood 8227H**  
 Maternal Brother to Lot 73

### 74 SRS FASTTRACK 8229J

tattoo: 8229J birth: 03/01/21 reg: 20129078

**ANGUS BULL**

HF Distinct 104D  
**SRS Fast Track 5283F**  
 SRS Elba 5283C#  
 Connealy Big Time 1251 7743  
**SRS Lass 8229F**  
 S R S Lass 8159U#

HF Defender 146B  
 HF Echo 321Z  
 Connealy Black Granite#  
 S R S Elba 7141T  
 Connealy Consensus#  
 Breeta of Conanga 525#  
 S R S Strategy 607S  
 S R S Mentor's Lass 5104R

Birth Weight	87
205 Weight	696
Weaning Rat	97
Sire Avg BW	27@85
Dam Avg BW	3@86
Dam WN Prod	3@98

Angus Association EPDs						
CED	BW	WW	YW	SC	HP	Milk
+0	+1.8	+41	+74	+0.04	+11.3	+24
Marb	RE	Fat	\$W	\$B		
+.52	+.48	+.004	+39	+115		



- A long-sided, wide-made bull

### 75 SRS FORGE 7205J

tattoo: 7205J birth: 03/08/21 reg: 20129046

**ANGUS BULL**

Connealy Capitalist 028#  
**PGC Forge**  
 PGC Shoeshone Girl 4106#  
 Connealy Big Time 1251 7743  
**SRS Barbaramere Jet 7205E**  
 Ox Bow Barbaramere Jet 842#

S A V Final Answer 0035#  
 Prides Pita of Conanga 8821  
 Sitz Upside 547W#  
 PGC Shoshone Girl 0229#  
 Connealy Consensus#  
 Breeta of Conanga 525#  
 Sitz Tradition RLS 8702#  
 Ox Bow Barbaramere Jet 5129#

Birth Weight	81
205 Weight	713
Weaning Rat	99
Sire Avg BW	71@85
Dam Avg BW	4@79
Dam WN Prod	4@96

Angus Association EPDs						
CED	BW	WW	YW	SC	HP	Milk
+7	+0.2	+63	+103	+50	+14.7	+23
Marb	RE	Fat	\$W	\$B		
+.51	+.35	+.031	+63	+120		



**Heifer Bull Potential**

- A very correct, square-made bull
- Dam is an attractive-patterned cow with a perfect udder



**REFERENCE SIRE**

*Musgrave Feature*

### 76 SRS FEATURE 5201J

tattoo: 5201J birth: 03/16/21 reg: 20129024

**ANGUS BULL**

Musgrave Sky High 1535  
**Musgrave Feature**  
 Musgrave Pride 1416-166

Musgrave Big Sky#  
 Flag Queen W 00649  
 Mogck Bullseye#  
 Waters Pride Rose 166

Sitz Longevity 556Z#  
**SRS Kathy 5201C**  
 S R S Kathy 7142T#

Connealy Final Product#  
 Sitz Pride 625W  
 Connealy Onward#  
 S R S Kathy 0394N#

Birth Weight	97
205 Weight	723
Weaning Rat	101
Sire Avg BW	182@85
Dam Avg BW	5@85
Dam WN Prod	5@100

Angus Association EPDs						
CED	BW	WW	YW	SC	HP	Milk
+0	+1.7	+58	+113	-.16	+13.8	+26
Marb	RE	Fat	\$W	\$B		
+.50	+.58	+.039	+50	+128		



- A powerful, heavy-muscle Feature Son



**LOT 77**

### 77 SRS FEATURE 7201J

tattoo: 7201J birth: 03/03/21 reg: 20129045

**ANGUS BULL**

Musgrave Sky High 1535  
**Musgrave Feature**  
 Musgrave Pride 1416-166

Musgrave Big Sky#  
 Flag Queen W 00649  
 Mogck Bullseye#  
 Waters Pride Rose 166

HA Prime Cut 4493  
**SRS Pride 7201E**  
 SRS Pride 5207C#

Vermilion Sirloin  
 HA Miss Blackcap 9127  
 Tombstone 050#  
 Vermilion Pride 8071

Birth Weight	101
205 Weight	729
Weaning Rat	102
Sire Avg BW	182@85
Dam Avg BW	4@100
Dam WN Prod	4@107

Angus Association EPDs						
CED	BW	WW	YW	SC	HP	Milk
-5	+4.6	+77	+130	+89	+16.8	+21
Marb	RE	Fat	\$W	\$B		
+.25	+.66	+.008	+59	+135		



- A rugged-made bull with a big top
- His dam is a thick-made, attractive cow with excellent production



**78****SRS STUNNER 911J**

tattoo: 911J birth: 02/11/21 reg: +20182514

**ANGUS BULL**

LD Capitalist 316

Connealy Capitalist 028#  
LD Dixie Erica 2053**Musgrave 316 Stunner**

MCATL Blackbird 831-1378#

MCATL Pure Product 903-55#  
MCATL Blackbird 1378-573

S R S Yukon 9133Y

Limestone Great Divide U254  
S R S Emma 9133W#**SRS Evergreen 3236a#**

S R S Evergreen 0107X

S A V Net Worth 4200#  
Ox Bow Eisa Evergreen 226#

Birth Weight	92
205 Weight	668
Weaning Rat	ET
Sire Avg BW	51@79
Dam Avg BW	5@86
Dam WN Prod	5@106

Angus Association EPDs						
CED	BW	WW	YW	SC	HP	Milk
+3	+1.1	+48	+81	+1.08	+3.2	+35
Marb	RE	Fat	\$W	\$B		
+4.45	+52	+0.067	+56	+130		



- A long spined bull out of a productive donor cow

**REFERENCE DAM**SRS Evergreen 3236A  
Pathfinder Dam of Lots 78 and 96**80****SRS ENTICE 531J**

tattoo: 531J birth: 02/04/21 reg: +20182745

**ANGUS BULL**

SydGen Enhance

SydGen Exceed 3223  
SydGen Rita 2618**MOGCK Entice**

MOGCK Erica 2255#

Mogck Sure Shot 253  
MOGCK Erica 2162

Connealy Onward#

Connealy Lead On#  
Altune of Conanga 6104**S R S Kathy 0103X#**

S R S Kathy 0394N#

B C C Bushwacker 41-93#  
Tar Kathy 8003

Birth Weight	81
205 Weight	619
Weaning Rat	ET
Sire Avg BW	32@83
Dam Avg BW	7@85
Dam WN Prod	7@109

Angus Association EPDs						
CED	BW	WW	YW	SC	HP	Milk
+6	+1.8	+80	+146	+1.34	+11.3	+30
Marb	RE	Fat	\$W	\$B		
+81	+56	-0.018	+76	+163		

**REFERENCE DAM**SRS Kathy 0103X  
Pathfinder Dam of Lot 80**79****SRS BLOCKBUSTER 8272J**

tattoo: 8272J birth: 03/21/21 reg: 20129086

**ANGUS BULL**

SRS Blockbuster 2256B

Soo Line Motive 9016#  
SRS Rose 2256Z**SRS Blockbuster 914G**

SRS Manor 4221B

Tombstone 050#  
Ox Bow Manor 443#

HF Distinct 104D

HF Defender 146B  
HF Echo 321Z**SRS Pride 8272F**

S R S Pride 6144S

S A V 8180 Traveler 004#  
Vermilion Pride 8071

Birth Weight	90
205 Weight	717
Weaning Rat	100
Sire Avg BW	1@94
Dam Avg BW	2@78
Dam WN Prod	2@99

Angus Association EPDs						
CED	BW	WW	YW	SC	HP	Milk
-2	+2.2	+54	+91	-1.14	+16.6	+28
Marb	RE	Fat	\$W	\$B		
-1.11	+0.04	-0.006	+53	+67		

**FULL BROTHER**SRS Feature 7201H  
Full Brother to Lot 77**81****SRS ENTICE 2284J**

tattoo: 2284J birth: 02/01/21 reg: +20182740

**ANGUS BULL**

SydGen Enhance

SydGen Exceed 3223  
SydGen Rita 2618**MOGCK Entice**

MOGCK Erica 2255#

Mogck Sure Shot 253  
MOGCK Erica 2162

TC Total 410#

Bon View New Design 208#  
TC Erica Eileen 2047**SRS Chloe 2205Z**

Basin Chloe 2P31#

C A Future Direction 5321#  
Basin Chloe 6102

Birth Weight	77
205 Weight	699
Weaning Rat	ET
Sire Avg BW	32@83
Dam Avg BW	7@90
Dam WN Prod	6@107

Angus Association EPDs						
CED	BW	WW	YW	SC	HP	Milk
+7	+1.0	+73	+117	+1.56	+14.5	+42
Marb	RE	Fat	\$W	\$B		
+81	+21	-0.003	+88	+124		

**REFERENCE DAM**SRS Chloe 2205Z  
Dam of Lot 81

Angus Avg EPDs Non-Parent Bulls CED +6 BW +1.2 WW +61 YW +108 SC +86 HP +11.8 Milk +27 Marb +.63 RE +.62 Fat +.013 \$W +57 \$B +138



REFERENCE SIRE

SRS Glacier 2256G

## LOTS 83 - 84 FLUSH BROTHERS

- A very consistent set of flush brothers that have lots of style
- These bulls will leave daughters with a lot of value
- Historic was our high-selling bull in 2021 and has seen heavy use back in our herd the last two years
- His progeny are big-bodied and long-sided with lots of thickness
- We used Historic to add softness and improve marbling, yet staying consistent with our program, he is backed by a phenomenal dam
- ET brothers to 29-31 & 49



LOT 83

### 82 SRS GLACIER 8231K

tattoo: 8231K birth: 01/31/22 reg: +20437942

**ANGUS BULL**  
LD Capitalist 316  
**SRS Glacier 2256G**  
SRS Rose 2256Z

Koupals B&B Identity#  
**WK Blackbird 2224#**  
WK Blackbird 5066

Connealy Capitalist 028#  
LD Dixie Erica 2053  
Tombstone 050#  
S R S Rose 6148S#  
Sitz Upward 307R#  
B&B Erica 605#  
Connealy Network  
TC Blackbird 0127

Birth Weight	76
205 Weight	681
Weaning Rat	ET
Sire Avg BW	70@76
Dam Avg BW	9@77
Dam WN Prod	9@101

Angus Association EPDs						
CED	BW	WW	YW	SC	HP	Milk
+10	-1.7	+51	+96	+1.24	+10.1	+37
Marb	RE	Fat	\$W	\$B		
+.57	+.51	+.038	+63	+116		



#### Heifer Bull Potential

- Long-spined, correct made bull with eye appeal
- ET brother to 27,28,38
- Dam is the mother to SRS Honest and she continues to produce extremely stylish progeny

“Their focus on disposition, udder structure, teat size, feet and legs, pelvic width and reproductive efficiency are just some of the things that are critical to all commercial operations.”  
- Jason Parker, UT



REFERENCE DAM

Deep Creek Imp Lass 6101  
Dam of Lots 29 - 31, 49, 83 and 84

### 83 SRS HISTORIC 728K

tattoo: 728K birth: 02/20/22 reg: +20443228

**ANGUS BULL**  
Hoover No Doubt  
**SRS Historic 2208H**  
SRS Joyce 2208Z

Mogck Bullseye#  
Miss Blackcap Ellston J2  
Tombstone 050#  
Basin Joyce 5474#  
Connealy Impression 540C  
Connealy Impression#  
Aleena of Conanga 1164#  
Deep Creek Rock N Roll 123  
Deep Creek Total Lass 701#

Birth Weight	89
205 Weight	724
Weaning Rat	ET
Sire Avg BW	43@90
Dam Avg BW	na
Dam WN Prod	2@116

Angus Association EPDs						
CED	BW	WW	YW	SC	HP	Milk
+0	+3.1	+67	+114	+4.1	+11.6	+25
Marb	RE	Fat	\$W	\$B		
+.87	+.69	+.018	+62	+148		



### 84 SRS HISTORIC 320K

tattoo: 320K birth: 02/17/22 reg: +20443224

**ANGUS BULL**  
Sire: **SRS Historic 2208H**  
Dam: **Deep Creek Imp Lass 6101**

Birth Weight	89
205 Weight	693
Weaning Rat	ET

Angus Association EPDs						
CED	BW	WW	YW	SC	HP	Milk
-1	+4.1	+59	+99	+4.5	+10.4	+24
Marb	RE	Fat	\$W	\$B		
+.45	+.74	-.010	+49	+129		



Scan the QR code with your phone camera to go directly to that bull's video, or view on [www.NorthernLivestockVideo.com](http://www.NorthernLivestockVideo.com) and [www.SkinnerRanch.com](http://www.SkinnerRanch.com)



SRS Honest 3136H

REFERENCE  
SIRE

**85** SRS HONEST 0212K  
tattoo: 0212K birth: 02/06/22 reg: 20437754

<b>ANGUS BULL</b>	Soo Line Motive 9016#	Birth Weight	67
SRS Blockbuster 2256B	SRS Rose 2256Z	205 Weight	713
<b>SRS Honest 3136H</b>	Koupals B&B Identity#	Weaning Rat	101
WK Blackbird 2224#	WK Blackbird 5066	Sire Avg BW	38@81
Hoover No Doubt	Mogck Bullseye#	Dam Avg BW	2@60
<b>SRS Blossom 0212H</b>	Miss Blackcap Ellston J2	Dam WN Prod	1@101
SRS Blossom 4244B	Musgrave Foundation#		
	SRS Joyce 2208Z		

Angus Association EPDs						
CED	BW	WW	YW	SC	HP	Milk
+8	+0.7	+67	+111	+25	+15.7	+28
Marb	RE	Fat	\$W	\$B		
+28	+61	+013	+72	+116		



- Twin *Heifer Bull Potential*
- A shapey, moderate bull that has a lot of style and presence
- SRS Honest is a bull we used for his incredible look and balance
- We used Honest heavily on our heifers and his progeny average over 103 index at 205
- Honest calves are exceeding our high expectations
- Expect Honest progeny to wean heavy, moderating mature size
- Dam is a beautiful young first calf heifer



**86** SRS HONEST 0217K  
tattoo: 0217K birth: 01/15/22 reg: 20437756

<b>ANGUS BULL</b>	Soo Line Motive 9016#	Birth Weight	78
SRS Blockbuster 2256B	SRS Rose 2256Z	205 Weight	686
<b>SRS Honest 3136H</b>	Koupals B&B Identity#	Weaning Rat	97
WK Blackbird 2224#	WK Blackbird 5066	Sire Avg BW	38@81
Hoover No Doubt	Mogck Bullseye#	Dam Avg BW	1@78
<b>SRS Rose 0217H</b>	Miss Blackcap Ellston J2	Dam WN Prod	1@97
SRS Rose 5220C	Soo Line Motive 9016#		
	S R S Rose 6148S#		

Angus Association EPDs						
CED	BW	WW	YW	SC	HP	Milk
+7	+1.7	+71	+114	+50	+13.8	+20
Marb	RE	Fat	\$W	\$B		
+36	+59	+030	+69	+122		



- Another typical Honest son, thick, square, and flashy

**87** SRS HONEST 511K  
tattoo: 511K birth: 02/22/22 reg: +20437919

<b>ANGUS BULL</b>	Soo Line Motive 9016#	Birth Weight	83
SRS Blockbuster 2256B	SRS Rose 2256Z	205 Weight	687
<b>SRS Honest 3136H</b>	Koupals B&B Identity#	Weaning Rat	ET
WK Blackbird 2224#	WK Blackbird 5066	Sire Avg BW	38@81
Stevenson Rockmount RX933#	MCC Daybreak#	Dam Avg BW	5@79
<b>SRS Rose 6276D#</b>	FSHK Pride 180#	Dam WN Prod	5@106
S R S Rose 6146S	S A V 004 Density 4336#		
	Vermilion Rose 7566#		

Angus Association EPDs						
CED	BW	WW	YW	SC	HP	Milk
+7	+1.2	+70	+122	+1.38	+13.2	+26
Marb	RE	Fat	\$W	\$B		
+00	+68	+001	+68	+111		



- *Heifer Bull Potential*
- A moderate big-middled, thick bull
- Dam is a broody, productive Pathfinder donor cow

**88** SRS HONEST 0203K  
tattoo: 0203K birth: 01/17/22 reg: 20437739

<b>ANGUS BULL</b>	Soo Line Motive 9016#	Birth Weight	80
SRS Blockbuster 2256B	SRS Rose 2256Z	205 Weight	676
<b>SRS Honest 3136H</b>	Koupals B&B Identity#	Weaning Rat	95
WK Blackbird 2224#	WK Blackbird 5066	Sire Avg BW	38@81
MOGCK Entice	SydGen Enhance	Dam Avg BW	1@80
<b>SRS KATHY 0203H</b>	MOGCK Erica 2255#	Dam WN Prod	1@95
S R S Kathy 0103X#	Connealy Onward#		
	S R S Kathy 0394N#		

Angus Association EPDs						
CED	BW	WW	YW	SC	HP	Milk
+5	-0.1	+63	+102	+0.1	+13.5	+28
Marb	RE	Fat	\$W	\$B		
+77	+61	+014	+72	+118		



- A stylish, correct made bull
- Dam is a nice young cow

**89** SRS HONEST 0211K  
tattoo: 0211K birth: 01/19/22 reg: 20437749

<b>ANGUS BULL</b>	Soo Line Motive 9016#	Birth Weight	81
SRS Blockbuster 2256B	SRS Rose 2256Z	205 Weight	699
<b>SRS Honest 3136H</b>	Koupals B&B Identity#	Weaning Rat	99
WK Blackbird 2224#	WK Blackbird 5066	Sire Avg BW	38@81
SRS Engage 4221E	Sitz Brigade 12074	Dam Avg BW	1@81
<b>SRS Chloe 0211H</b>	SRS Mahor 4221B	Dam WN Prod	1@99
SRS Chloe 2205Z	TC Total 410#		
	Basin Chloe 2P31#		

Angus Association EPDs						
CED	BW	WW	YW	SC	HP	Milk
+0	+2.6	+68	+115	+96	+18.8	+22
Marb	RE	Fat	\$W	\$B		
+53	+58	+032	+59	+130		



- A long-made, level-designed bull

**90**

**SRS HONEST 0275K**

tattoo: 0275K birth: 02/20/22 reg: 20437767

**ANGUS BULL**

SRS Blockbuster 2256B  
**SRS Honest 3136H**  
WK Blackbird 2224#

Soo Line Motive 9016#  
SRS Rose 2256Z  
Koupals B&B Identity#  
WK Blackbird 5066  
Connealy Capitalist 028#  
PGC Shoeshone Girl 4106#  
Bobcat Big Sky C64  
S R S Kathy 8140U

Birth Weight	<b>86</b>
205 Weight	<b>699</b>
Weaning Rat	<b>99</b>
Sire Avg BW	<b>38@81</b>
Dam Avg BW	<b>1@86</b>
Dam WN Prod	<b>1@99</b>

Angus Association EPDs						
CED	BW	WW	YW	SC	HP	Milk
+2	+3.8	+61	+107	+94	+11.7	+25
Marb	RE	Fat	\$W	\$B		
+0.27	+0.49	+0.016	+51	+114		



**93**

**SRS HALLMARK 0291K**

tattoo: 0291K birth: 01/17/22 reg: 20437786

**ANGUS BULL**

PGC Forge  
**SRS Hallmark 2224H**  
WK Blackbird 2224#

Connealy Capitalist 028#  
PGC Shoeshone Girl 4106#  
Koupals B&B Identity#  
WK Blackbird 5066  
Connealy Big Time 1251 7743  
SRS Chloe 2205Z  
HF Distinct 104D  
S R S Pride 6144S

Birth Weight	<b>67</b>
205 Weight	<b>685</b>
Weaning Rat	<b>97</b>
Sire Avg BW	<b>10@77</b>
Dam Avg BW	<b>1@67</b>
Dam WN Prod	<b>1@97</b>

Angus Association EPDs						
CED	BW	WW	YW	SC	HP	Milk
+13	-1.8	+42	+81	+1.02	+14.0	+42
Marb	RE	Fat	\$W	\$B		
+0.54	+0.46	+0.024	+60	+120		



Heifer Bull Potential

**91**

**SRS HOMBRE 0254K**

tattoo: 0254K birth: 02/08/22 reg: 20437763

**ANGUS BULL**

Connealy Mainstay  
**Musgrave Hombre**  
Musgrave Lady Barbara 1436

Connealy Glory 4127  
Jayce of Conaŋga 318E  
LD Capitalist 316  
Musgrave Lady Barbara 353-29  
Connealy Capitalist 028#  
PGC Shoeshone Girl 4106#  
Tombstone 050#  
S R S Kathy 0394N#

Birth Weight	<b>70</b>
205 Weight	<b>712</b>
Weaning Rat	<b>100</b>
Sire Avg BW	<b>13@76</b>
Dam Avg BW	<b>1@70</b>
Dam WN Prod	<b>1@100</b>

Angus Association EPDs						
CED	BW	WW	YW	SC	HP	Milk
+5	+0.6	+64	+112	-.26	+15.1	+23
Marb	RE	Fat	\$W	\$B		
+0.29	+0.62	-.016	+61	+120		



Heifer Bull Potential

- A wide-topped, big ribbed bull



LOT **92**

**94**

**SRS HALLMARK 0298K**

tattoo: 0298K birth: 02/24/22 reg: 20437789

**ANGUS BULL**

PGC Forge  
**SRS Hallmark 2224H**  
WK Blackbird 2224#

Connealy Capitalist 028#  
PGC Shoeshone Girl 4106#  
Koupals B&B Identity#  
WK Blackbird 5066  
LD Capitalist 316  
MCATL Blackbird 831-1378#  
Connealy Big Time 1251 7743  
S R S Lass 8159U#

Birth Weight	<b>83</b>
205 Weight	<b>711</b>
Weaning Rat	<b>100</b>
Sire Avg BW	<b>10@77</b>
Dam Avg BW	<b>1@83</b>
Dam WN Prod	<b>1@100</b>

Angus Association EPDs						
CED	BW	WW	YW	SC	HP	Milk
+2	+1.6	+58	+95	+1.45	+12.1	+30
Marb	RE	Fat	\$W	\$B		
+0.71	+0.56	+0.013	+61	+131		



- A moderate, big-ribbed bull



LOT **95**

**92**

**SRS HALLMARK 0232K**

tattoo: 0232K birth: 02/08/22 reg: 20437760

**ANGUS BULL**

PGC Forge  
**SRS Hallmark 2224H**  
WK Blackbird 2224#

Connealy Capitalist 028#  
PGC Shoeshone Girl 4106#  
Koupals B&B Identity#  
WK Blackbird 5066  
Soo Line Motive 9016#  
SRS Rose 2256Z  
Tombstone 050#  
Ox Bow Manor 443#

Birth Weight	<b>79</b>
205 Weight	<b>743</b>
Weaning Rat	<b>105</b>
Sire Avg BW	<b>10@77</b>
Dam Avg BW	<b>1@79</b>
Dam WN Prod	<b>1@105</b>

Angus Association EPDs						
CED	BW	WW	YW	SC	HP	Milk
+8	+1.1	+62	+109	+5.1	+13.6	+21
Marb	RE	Fat	\$W	\$B		
+0.01	+0.46	+0.000	+54	+115		



Heifer Bull Potential

- A long-designed bull with great shape
- SRS Hallmark is a bull we used on our heifers due to his attractive pattern and strong maternal pedigree

**95**

**SRS STUNNER 0276K**

tattoo: 0276K birth: 01/17/22 reg: 20440298

**ANGUS BULL**

LD Capitalist 316  
**Musgrave 316 Stunner**  
MCATL Blackbird 831-1378#

Connealy Capitalist 028#  
LD Dixie Erica 2053  
MCATL Pure Product 903-55#  
MCATL Blackbird 1378-573  
Musgrave Feature  
Musgrave Sky High 1535  
Musgrave Pride 1416-166  
Brooking Bank Note 4040  
Pine Coulee Black Annie A6

Birth Weight	<b>70</b>
205 Weight	<b>728</b>
Weaning Rat	<b>103</b>
Sire Avg BW	<b>51@79</b>
Dam Avg BW	<b>1@70</b>
Dam WN Prod	<b>1@103</b>

Angus Association EPDs						
CED	BW	WW	YW	SC	HP	Milk
+5	+0.9	+73	+120	+0.92	+13.4	+34
Marb	RE	Fat	\$W	\$B		
+0.32	+0.85	+0.044	+79	+122		



- A long-sided bull with great muscle shape out of a nice first calf heifer



REFERENCE  
SIRE

Musgrave 316 Stunner

**98 SRS HEADLINE 409K**  
tattoo: 409K birth: 02/17/22 reg: +20437916

**ANGUS BULL**  
Musgrave 316 Stunner  
**SRS Headline 2277H**  
SRS Rose 2277Z#

LD Capitalist 316  
MCATL Blackbird 831-1378#  
Tombstone 050#  
S R S Rose 0119X  
Connealy Onward#  
Sitz Pride 150  
G D A R Traveler 044#  
Tar Kathy 613

Sitz Onward 495R  
**S R S Kathy 8140U**  
Tar Kathy 8003

Birth Weight	87
205 Weight	634
Weaning Rat	ET
Sire Avg BW	44@85
Dam Avg BW	12@79
Dam WN Prod	12@102

Angus Association EPDs						
CED	BW	WW	YW	SC	HP	Milk
+8	+1.3	+53	+81	+1.87	+12.6	+29
Marb	RE	Fat	\$W	\$B		
+0.05	+0.20	+0.023	+61	+76		



**Heifer Bull Potential**  
• A correct, square-made bull

**96 SRS STUNNER 917K**  
tattoo: 917K birth: 02/05/22 reg: +20440423

**ANGUS BULL**  
LD Capitalist 316  
**Musgrave 316 Stunner**  
MCATL Blackbird 831-1378#

Connealy Capitalist 028#  
LD Dixie Erica 2053  
MCATL Pure Product 903-55#  
MCATL Blackbird 1378-573  
Limestone Great Divide U254  
S R S Emma 9133W#  
S A V Net Worth 4200#  
Ox Bow Eisa Evergreen 226#

S R S Yukon 9133Y  
**SRS Evergreen 3236a#**  
S R S Evergreen 0107X

Birth Weight	92
205 Weight	667
Weaning Rat	ET
Sire Avg BW	51@79
Dam Avg BW	5@86
Dam WN Prod	5@106

Angus Association EPDs						
CED	BW	WW	YW	SC	HP	Milk
+6	+1.0	+74	+128	+5.1	+5.1	+40
Marb	RE	Fat	\$W	\$B		
+0.46	+0.85	+0.028	+80	+148		



• A long-made bull that is level-designed

**99 SRS FEATURE 023K**  
tattoo: 023K birth: 01/28/22 reg: +20452147

**ANGUS BULL**  
Musgrave Sky High 1535  
**Musgrave Feature**  
Musgrave Pride 1416-166

Musgrave Big Sky#  
Flag Queen W 00649  
Mogck Bullseye#  
Waters Pride Rose 166  
Sitz Upward 307R#  
Mytty Countess 906  
Vermilion Yellowstone#  
Basin Pride 7089

Tombstone 050#  
**SRS Pride 2244Z**  
Basin Pride 953R#

Birth Weight	87
205 Weight	614
Weaning Rat	ET
Sire Avg BW	182@85
Dam Avg BW	9@86
Dam WN Prod	8@106

Angus Association EPDs						
CED	BW	WW	YW	SC	HP	Milk
+1	+4.3	+78	+134	+3.4	+12.0	+23
Marb	RE	Fat	\$W	\$B		
+0.68	+0.46	+0.042	+62	+141		



• This is a very attractive square-made bull  
• Daughters should be outstanding



REFERENCE  
DAM

SRS Evergreen 3236A  
Pathfinder Dam of Lots 78 and 96

**100 SRS FEATURE 3222K**  
tattoo: 3222K birth: 01/26/22 reg: 20437696

**ANGUS BULL**  
Musgrave Sky High 1535  
**Musgrave Feature**  
Musgrave Pride 1416-166

Musgrave Big Sky#  
Flag Queen W 00649  
Mogck Bullseye#  
Waters Pride Rose 166  
Sitz Upward 307R#  
Mytty Countess 906  
N Bar Emulation EXT#  
Ox Bow Manor 037

Tombstone 050#  
**SRS Manor 3222a#**  
Ox Bow Manor 443#

Birth Weight	81
205 Weight	699
Weaning Rat	99
Sire Avg BW	182@85
Dam Avg BW	8@83
Dam WN Prod	8@105

Angus Association EPDs						
CED	BW	WW	YW	SC	HP	Milk
-1	+1.7	+72	+117	+2.8	+12.1	+31
Marb	RE	Fat	\$W	\$B		
+0.40	+0.42	+0.027	+77	+103		



**97 SRS STUNNER 6207K**  
tattoo: 6207K birth: 02/05/22 reg: 20440329

**ANGUS BULL**  
LD Capitalist 316  
**Musgrave 316 Stunner**  
MCATL Blackbird 831-1378#

Connealy Capitalist 028#  
LD Dixie Erica 2053  
MCATL Pure Product 903-55#  
MCATL Blackbird 1378-573  
Sitz Upward 307R#  
Mytty Countess 906  
B C C Bushwacker 41-93#  
Tar Kathy 8003

Tombstone 050#  
**SRS Kathy 6207D**  
S R S Kathy 0394N#

Birth Weight	78
205 Weight	637
Weaning Rat	90
Sire Avg BW	51@79
Dam Avg BW	5@79
Dam WN Prod	5@96

Angus Association EPDs						
CED	BW	WW	YW	SC	HP	Milk
+6	-0.4	+58	+107	+8.6	+10.3	+38
Marb	RE	Fat	\$W	\$B		
+0.49	+0.49	+0.074	+68	+153		



**Heifer Bull Potential**  
• An attractive made bull



Angus Bulls



REFERENCE SIRE

PGC Forge

**103 SRS ATLANTIS 8257K**  
 tattoo: 8257K birth: 01/26/22 reg: 20483526

**ANGUS BULL**  
 S A V Rainfall 6846 Coleman Charlo 0256#  
**Square B Atlantis 8060** S A V Blackcap May 4136  
 Elbanna of Conanga 1209 Connealy Consensus#  
 Elbasta of Conanga 9703

Pathfinder Genesis G357 Te Mania Berkley B1  
**SRS Erica 8257F** Pathfinder Direction D245  
 SRS Erica 4256B SRS Western 8124Z  
 Basin Erica 343R#

Birth Weight	90
205 Weight	704
Weaning Rat	99
Sire Avg BW	36@86
Dam Avg BW	3@77
Dam WN Prod	3@99

Angus Association EPDs						
CED	BW	WW	YW	SC	HP	Milk
-2	+2.5	+65	+111	+1.28	+16.3	+25
Marb	RE	Fat	\$W	\$B		
+1.03	+.76	+.039	+62	+151		



**101 SRS FORGE 8263K**  
 tattoo: 8263K birth: 02/18/22 reg: 20437843

**ANGUS BULL**  
 Connealy Capitalist 028# S A V Final Answer 0035#  
**PGC Forge** Prides Pita of Conanga 8821  
 PGC Shoshone Girl 4106# Sitz Upside 547W#  
 PGC Shoshone Girl 0229#

HF Distinct 104D HF Defender 146B  
**SRS Blackbird 8263E** HF Echo 321Z  
 SRS Blackbird 5241C SRS Analyze 8102A  
 SRS Blackbird 2202Z

Birth Weight	88
205 Weight	684
Weaning Rat	96
Sire Avg BW	71@85
Dam Avg BW	3@89
Dam WN Prod	3@95

Angus Association EPDs						
CED	BW	WW	YW	SC	HP	Milk
+8	+0.6	+53	+93	+1.31	+11.9	+24
Marb	RE	Fat	\$W	\$B		
+.22	+.37	+.013	+48	+91		



Heifer Bull Potential

**104 SRS ATLANTIS 8239K**  
 tattoo: 8239K birth: 01/28/22 reg: 20483558

**ANGUS BULL**  
 S A V Rainfall 6846 Coleman Charlo 0256#  
**Square B Atlantis 8060** S A V Blackcap May 4136  
 Elbanna of Conanga 1209 Connealy Consensus#  
 Elbasta of Conanga 9703

HA Delegate 6015 HA Outside 3008  
**SRS Nellie 8239F** HA Rito Lady 0845  
 SRS Nellie 2249Z S R S Trademark 732T  
 S R S Nellie 0393N

Birth Weight	84
205 Weight	674
Weaning Rat	95
Sire Avg BW	36@86
Dam Avg BW	3@74
Dam WN Prod	2@92

Angus Association EPDs						
CED	BW	WW	YW	SC	HP	Milk
+3	+1.2	+59	+105	+1.18	+14.3	+24
Marb	RE	Fat	\$W	\$B		
+.26	+.88	-.015	+57	+119		



**102 SRS FORGE 6259K**  
 tattoo: 6259K birth: 02/22/22 reg: 20437799

**ANGUS BULL**  
 Connealy Capitalist 028# S A V Final Answer 0035#  
**PGC Forge** Prides Pita of Conanga 8821  
 PGC Shoshone Girl 4106# Sitz Upside 547W#  
 PGC Shoshone Girl 0229#

HF Bank Roll 84B HF Smokin' Aces 105Y  
**SRS Pride 5259D** HF Miss Lucy 268Z  
 SRS Pride 4207B Tombstone 050#  
 Vermilion Pride 8071

Birth Weight	77
205 Weight	649
Weaning Rat	92
Sire Avg BW	71@85
Dam Avg BW	5@83
Dam WN Prod	5@102

Angus Association EPDs						
CED	BW	WW	YW	SC	HP	Milk
+7	+0.4	+53	+82	+99	+11.9	+22
Marb	RE	Fat	\$W	\$B		
-.13	+.15	+.002	+52	+77		



Heifer Bull Potential

**105 SRS FEATURE 5643K**  
 tattoo: 5643K birth: 02/13/22 reg: 20437795

**ANGUS BULL**  
 Musgrave Feature Musgrave Sky High 1535  
**3C Feature 0151** Musgrave Pride T416-166  
 3C Queen on Duty 1619 R B Tour Of Duty 177#  
 3C Queen Solution 69

JDD Totus Medius 117 Summitcrest Complete 1P55#  
**KR Elba 5643** JDD Emma 743  
 KR Elba 2577 Flag Special Addition 00159  
 Champion Hill Elba 7556

Birth Weight	79
205 Weight	720
Weaning Rat	102
Sire Avg BW	10@96
Dam Avg BW	6@85
Dam WN Prod	6@101

Angus Association EPDs						
CED	BW	WW	YW	SC	HP	Milk
+9	+0.5	+54	+94	+1.07	+11.0	+33
Marb	RE	Fat	\$W	\$B		
+.43	+.54	-.028	+58	+98		



Heifer Bull Potential



MATERNAL BROTHER

SRS Distinct 6259G, Maternal Brother to Lot 102

“We try to purchase moderately sized bulls with thickness and length overall; they travel well to cover our cows...We are pretty proud of our operation; thank you to SRS for raising such quality outstanding bulls and standing behind them.”  
 - Joe & Nadine Nemitz, MT

Created by Angus Genetics Inc. (AGI) and powered by Neogen GeneSeek, our sale cattle have been tested with the first DNA profile designed specifically for Angus cattle, Angus GS<sup>SM</sup>.

Each marker is intentionally chosen from the Angus genome to drive the Angus breed into the future. It offers maximum accuracy for genomically enhanced EPDs at great value. Testing heifer and bull calves ultimately allows you to reap the benefits of faster genetic gain in your commercial herd. With Angus GS, it's all about you, our customer.

**Note: SRS Angus bulls were recommended as Heifer Bull Potential by genomically enhanced EPDs and pedigree history. The size, shape, and calving ability of your program should also be factored into your decision**



Trait	Progeny Equivalents
Calving Ease Direct (CED)	26
Birth Weight (BW)	23
Weaning Weight (WW)	27
Yearling Weight (YW)	23
Dry Matter Intake (DMI)	12
Yearling height (YH)	17
Scrotal Circumference (SC)	15
Docility (DOC)	12
Claw Set (CLAW)	10
Foot Angle (ANGLE)	10
Heifer Pregnancy (HP)	17
Calving Ease Maternal (CEM)	20
Milk	36
Mature Weight (MW)	15
Mature Height (MH)	9
Carcass Weight (CW)	15
Carcass Marbling (MARB)	11
Carcass Ribeye (RE)	17
Carcass Fat (FAT)	14

Make Angus GS work for you at [Angus.org/AGI/AngusGS](http://Angus.org/AGI/AngusGS) or contact your Neogen GeneSeek representative at (402) 435-0665.





LOT  
**106**

Optimizer Bulls

**106 SRS GUIDELINE 5191K**  
tattoo: SRS5191K birth: 1/30/2022 reg #: S753287

**OPTIMIZER BULL**

- SRS ELEMENT 4154E
- SRS GUIDELINE 7126G**
- SRS LACE 7126E
- SRS AGREEMENT 0361A
- SRS EXPRESS 5191C**
- SRS EXPRESS 3166A
- SRS BENCHMARK 8105B
- SRS MORGAN 4154B
- SRS BOTTOM LINE 978B
- SRS LACE 3179A
- SRS YAKIMA 9118YY
- SRS NOVELTY 0361N
- SRS UPRISING 0059U
- SRS EXPRESS 0965W

Birth Weight	<b>87</b>
205 Weight	<b>788</b>
Weaning Rat	<b>108</b>
Sire Avg BW	<b>30@78</b>
Dam Avg BW	<b>6@90</b>
Dam WN Prod	<b>6@103</b>

American Salers EPDs									
CED	BW	WW	YW	MWW	Milk	Marb	Carcass	REA	Back Fat
<b>+8.7</b>	<b>-1.3</b>	<b>+68</b>	<b>+100</b>	<b>+56</b>	<b>+22</b>	<b>+0.2</b>	<b>+27.3</b>	<b>+52</b>	<b>-.03</b>

**SCURRED 50% HOMOZYGOUS BLACK**

- A stout-made, big hipped bull with a lot of look
- This long-sided bull has tremendous performance
- SRS Guideline is a bull we have used for his stylish look and moderate birthweights
- Lot 106 dam is a favorite here and always has a top end calf
- She is and ideal cow that is feminine, broody, and thick with excellent feet and a great udder



**MATERNAL BROTHER**

*SRS Flashpoint 5191H  
Maternal Brother to Lot 106*



**Salers Average EPDs** BW +0.0 WW +58 YW +81 MWW +45 Milk +16 MB +0.0 CW +14.1 REA +.66 FT -.07

*note - EPDs cannot be compared across breeds*





**107 SRS GENERAL 4183K**  
 tattoo: SRS4183K birth: 1/31/2022 reg #: P753300

**OPTIMIZER BULL**  
 SRS DYNASTY 667D  
**SRS GENERAL 4180G**  
 SRS JULIET 4180B

CONNALLY GREELEY  
 SRS FINICKY 0838U  
 SRS GUNSLINGER 605Z  
 SRS JULIET 0218M

SOO LINE MOTIVE 9016  
**SRS JULIET 4183B**  
 SRS JULIET 0584R

HF KODIAK 5R  
 TLA BEAUTY 5R  
 MAC LANSING 302L  
 SRS JULIET 9609F

Birth Weight	101
205 Weight	830
Weaning Rat	114
Sire Avg BW	24@85
Dam Avg BW	6@93
Dam WN Prod	6@105

American Salers EPDs									
CED	BW	WW	YW	MWW	Milk	Marb	Carcass	REA	Back Fat
+8.3	+2.7	+81	+117	+56	+16	+0.1	+32.0	+71	-.03
<b>POLLED 50% BLACK</b>									

- A powerhouse bull that is long-spined with extraordinary thickness
- This bull is sure to add pounds to your calves at weaning
- SRS General was a standout from birth and his progeny certainly have the same great look and have continued to impress us
- His dam is a long, high performance cow that is a full sister to SRS Bottomline and SRS Bullseye



SRS General 4180G



**Optimizer Bulls**

# 108 SRS GOVERNOR 9113K

**OPTIMIZER BULL**

SRS ENGAGE 4221E  
**SRS GOVERNOR 4111G**  
 SRS LACE 4111B

SITZ BRIGADE 12074  
 SRS MANOR 4221B  
 SRS YUMA 072Y  
 SRS LACE 0814U  
 CONNEALY BIG TIME 1251 7743  
 SRS COLUMBIA 4108B  
 SRS UPRISING 0059U  
 SRS SUZETTE 0675S

Birth Weight	95
205 Weight	800
Weaning Rat	109
Sire Avg BW	36@82
Dam Avg BW	2@85
Dam WN Prod	2@103

SRS ENTITY 4108E  
**SRS SUZETTE 9113G**  
 SRS SUZETTE 3160A

American Salers EPDs									
CED	BW	WW	YW	MWW	Milk	Marb	Carcass	REA	Back Fat
+10.3	+0.8	+83	+124	+65	+24	+0.1	+39.4	+68	-.02

**POLLED 50% HOMOZYGOUS BLACK**

- A stylish bull with excellent performance
- A bull that will catch your eye in the pen
- SRS Governor was an outcross bull that adds length and performance to his progeny
- His young dam is a stylish, correct made female with a great udder



# 109 SRS GENERAL 3147K

**OPTIMIZER BULL**

SRS DYNASTY 667D  
**SRS GENERAL 4180G**  
 SRS JULIET 4180B

CONNEALY GREELEY  
 SRS FINICKY 0838U  
 SRS GUNSLINGER 605Z  
 SRS JULIET 0218M

Birth Weight	98
205 Weight	731
Weaning Rat	100
Sire Avg BW	24@85
Dam Avg BW	8@91
Dam WN Prod	8@103

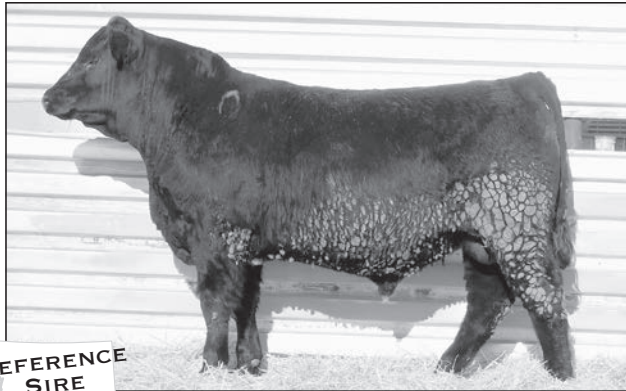
SRS YALE 0309Y  
**SRS RUSSETT 3147A**  
 SRS RUSSETT 0305N

LIMESTONE GREAT DIVIDE U254  
 OX BOW EISA EVERGREEN 226  
 SRS LATIGO 9633L  
 SRS RUSSET RED 9205B

American Salers EPDs									
CED	BW	WW	YW	MWW	Milk	Marb	Carcass	REA	Back Fat
+9.3	+2.2	+73	+107	+56	+19	+0.1	+29.3	+66	-.03

**POLLED 50% BLACK**

- A stout, rugged made bull with a big top
- His 10 year old dam is a broody, long-made cow with big performance



SRS Governor 4111G

# 110 SRS GOVERNOR 6152K

**OPTIMIZER BULL**

SRS ENGAGE 4221E  
**SRS GOVERNOR 4111G**  
 SRS LACE 4111B

SITZ BRIGADE 12074  
 SRS MANOR 4221B  
 SRS YUMA 072Y  
 SRS LACE 0814U

Birth Weight	74
205 Weight	721
Weaning Rat	99
Sire Avg BW	24@85
Dam Avg BW	5@70
Dam WN Prod	5@103

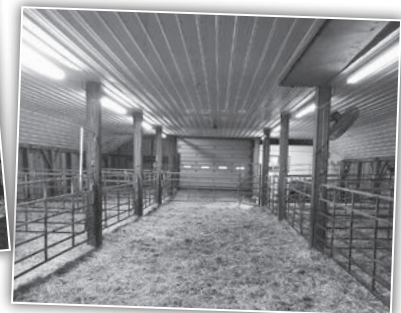
CONNEALY GREELEY  
**SRS FINICKY 6152D**  
 SRS FINICKY 0838U

CONNEALY CONFIDENCE 0100  
 PRECIOUS OF CONANGA 0484  
 CRO SURVEY 615S  
 SRS FINICKY 9809H

American Salers EPDs									
CED	BW	WW	YW	MWW	Milk	Marb	Carcass	REA	Back Fat
+12.2	-0.9	+77	+116	+61	+23	+0.1	+39.7	+66	-.02

**Heifer Bull Potential POLLED 50% HOMOZYGOUS BLACK**

- A wide-topped bull
- A bull that is very level in his design
- His dam is a gorgeous cow that is feminine fronted, broody with exceptional thickness and a tidy udder
- Dam is a full sister to SRS Dynasty





**111** **SRS GUIDELINE 5163K**  
 tattoo: SRS5163K birth: 1/26/2022 reg #: P753286  
**OPTIMIZER BULL**  
 SRS ELEMENT 4154E SRS BENCHMARK 8105B  
 SRS GUIDELINE 7126G SRS MORGAN 4154B  
 SRS LACE 7126E SRS BOTTOM LINE 978B  
 SRS LACE 3179A  
 SRS AMERICAN 0472A PRK YELLOWSTONE 966Y  
**SRS RUSSETT 5163C** SRS PONDERA 0472P  
 SRS RUSSETT 3147A SRS YALE 0309Y  
 SRS RUSSETT 0305N

Birth Weight	83
205 Weight	765
Weaning Rat	105
Sire Avg BW	30@78
Dam Avg BW	6@70
Dam WN Prod	6@104

American Salers EPDs									
CED	BW	WW	YW	MWW	Milk	Marb	Carcass	REA	Back Fat
+13.1	-3.1	+62	+89	+57	+26	+0.1	+23.2	+53	-.04

Heifer Bull Potential **POLLED 50% RED**

- An explosive patterned bull that is big-topped and thick-butted
- Dam is a broody made cow that has moderate birthweights and great performance
- She has excellent feet and a great udder



SRS Guideline 7126G

**112** **SRS GUIDELINE 0132K**  
 tattoo: SRS0132K birth: 1/12/2022 reg #: P753295  
**OPTIMIZER BULL**  
 SRS ELEMENT 4154E SRS BENCHMARK 8105B  
**SRS GUIDELINE 7126G** SRS MORGAN 4154B  
 SRS LACE 7126E SRS BOTTOM LINE 978B  
 SRS LACE 3179A  
 MUSGRAVE FEATURE MUSGRAVE SKY HIGH 1535  
**SRS MONTANA 0132H** MUSGRAVE PRIDE 1416-166  
 SRS MISS MONTANA 7101E CRO SURVEY 615S  
 PRK MISS MONTANA 503R

Birth Weight	83
205 Weight	727
Weaning Rat	99
Sire Avg BW	30@78
Dam Avg BW	1@83
Dam WN Prod	1@99

American Salers EPDs									
CED	BW	WW	YW	MWW	Milk	Marb	Carcass	REA	Back Fat
+9.6	-1.4	+64	+95	+52	+21	+0.2	+25.2	+54	-.03

**POLLED 50% HOMOZYGOUS BLACK**

- An attractive-patterned bull with lots of shape
- Dam is a nice young Feature cow



**113** **SRS GUIDELINE 0112K**  
 tattoo: SRS0112K birth: 1/26/2022 reg #: P753294  
**OPTIMIZER BULL**  
 SRS ELEMENT 4154E SRS BENCHMARK 8105B  
**SRS GUIDELINE 7126G** SRS MORGAN 4154B  
 SRS LACE 7126E SRS BOTTOM LINE 978B  
 SRS LACE 3179A  
 MUSGRAVE FEATURE MUSGRAVE SKY HIGH 1535  
**SRS COLUMBIA 0112H** MUSGRAVE PRIDE 1416-166  
 SRS COLUMBIA 4101B PRK ZAZU 732Z  
 SRS COLUMBIA 0204M

Birth Weight	87
205 Weight	666
Weaning Rat	91
Sire Avg BW	30@78
Dam Avg BW	1@83
Dam WN Prod	1@91

American Salers EPDs									
CED	BW	WW	YW	MWW	Milk	Marb	Carcass	REA	Back Fat
+6.9	-0.9	+60	+89	+48	+18	+0.2	+23.1	+47	-.03

**POLLED 50% HOMOZYGOUS BLACK**

- A stylish made bull with length
- His young dam is a beautifully made cow with a phenomenal udder





SRS El Dorado 4147E

**114 SRS HALLMARK 0145K**  
 tattoo: SRS0145K birth: 2/16/2022 reg #: P753335  
**OPTIMIZER BULL**

PGC FORGE	CONNELLY CAPITALIST 028	Birth Weight	95
<b>SRS HALLMARK 2224H</b>	PGC SHOSHONE GIRL 4106	205 Weight	713
WK BLACKBIRD 2224	KOUPALS B&B IDENTITY	Weaning Rat	98
	WK BLACKBIRD 5066	Sire Avg BW	10@77
SRS EL DORADO 4147E	SRS BOTTOM LINE 978B	Dam Avg BW	1@95
<b>SRS COMPLIMENT 0145H</b>	SRS PONY TAIL 4147B	Dam WN Prod	1@98
SRS COMPLIMENT 8152F	SRS BENCHMARK 8105B		
	SRS COMPLIMENT 6117D		

American Salers EPDs									
CED	BW	WW	YW	MWW	Milk	Marb	Carcass	REA	Back Fat
+5.6	+2.3	+53	+77	+43	+17	+0.3	+24.9	+27	-.02
<b>POLLED 75% AN 25% SA BLACK</b>									

- An extremely long made bull that is square-hipped and thick
- Dam did an excellent job as a first calf heifer



**115 SRS EL DORADO 0144K**  
 tattoo: SRS0144K birth: 1/21/2022 reg #: P753248  
**OPTIMIZER BULL**

SRS BOTTOM LINE 978B	SOO LINE MOTIVE 9016	Birth Weight	70
<b>SRS EL DORADO 4147E</b>	SRS JULIET 0584R	205 Weight	747
SRS PONY TAIL 4147B	SRS ZEUS 0509Z	Weaning Rat	102
	SRS PONY TAIL 0778T	Sire Avg BW	60@78
SRS ELEMENT 4154E	SRS BENCHMARK 8105B	Dam Avg BW	1@70
<b>SRS FOOTLOOSE 0144H</b>	SRS MORGAN 4154B	Dam WN Prod	1@102
SRS FOOTLOOSE 8118F	SRS DIALED IN 3160D		
	SRS FOOTLOOSE 3146A		

American Salers EPDs									
CED	BW	WW	YW	MWW	Milk	Marb	Carcass	REA	Back Fat
+16.6	-3.6	+57	+84	+49	+20	+0.1	+22.4	+51	-.03
<b>Heifer Bull Potential POLLED 50% RED</b>									

- A level-deigned, smooth made red bull



**116 SRS EL DORADO 0122K**  
 tattoo: SRS0122K birth: 1/17/2022 reg #: P753246  
**OPTIMIZER BULL**

SRS BOTTOM LINE 978B	SOO LINE MOTIVE 9016	Birth Weight	73
<b>SRS EL DORADO 4147E</b>	SRS JULIET 0584R	205 Weight	704
SRS PONY TAIL 4147B	SRS ZEUS 0509Z	Weaning Rat	96
	SRS PONY TAIL 0778T	Sire Avg BW	60@78
SRS DYNASTY 667D	CONNELLY GREELEY	Dam Avg BW	1@73
<b>SRS JULIET 0122H</b>	SRS FINICKY 0838U	Dam WN Prod	1@96
SRS JULIET 5142C	SRS AMERICAN 0472A		
	SRS JULIET 1151 Y		

American Salers EPDs									
CED	BW	WW	YW	MWW	Milk	Marb	Carcass	REA	Back Fat
+11.0	-1.7	+59	+90	+47	+17	+0.2	+26.2	+50	-.02
<b>Heifer Bull Potential POLLED 50% HOMOZYGOUS BLACK</b>									

- A bull with good length and thickness
- Daughter is a favorite young cow that is beautiful in her design





**117** **SRS ELEMENT 7126K**  
 tattoo: SRS7126K birth: 1/29/2022 reg #: P753251  
**OPTIMIZER BULL**

SRS BENCHMARK 8105B	SRS ZEUS 0509Z	Birth Weight	<b>91</b>
<b>SRS ELEMENT 4154E</b>	SRS SHANNON 8105U	205 Weight	<b>753</b>
SRS MORGAN 4154B	PRK YELLOWSTONE 966Y	Weaning Rat	<b>103</b>
	SRS MORGAN 0938W	Sire Avg BW	<b>42@75</b>
SRS BOTTOM LINE 978B	SOO LINE MOTIVE 9016	Dam Avg BW	<b>4@80</b>
<b>SRS LACE 7126E</b>	SRS JULIET 0584R	Dam WN Prod	<b>4@105</b>
SRS LACE 3179A	SRS UNREAL 0151U		
	SRS LACE 8114U		

American Sales EPDs									
CED	BW	WW	YW	MWW	Milk	Marb	Carcass	REA	Back Fat
+11.7	-2.1	+60	+87	+53	+22	+0.1	+23.0	+.47	-.03

- An extremely long-sided bull that is wide-topped and thick-ended
- He is a full brother to SRS Guideline
- Dam is a donor cow due to her exceptional type and kind and excellent production



SRS Lace 7126E  
 Dam of Lot 117



SRS Guideline 7126G  
 Maternal Brother to Lot 117

**Optimizer Bulls**



SRS Flash Point 3149F

**118 SRS ELEMENT 0114K**  
 tattoo: SRS0114K birth: 1/14/2022 reg #: S753260

<b>OPTIMIZER BULL</b>		Birth Weight	<b>89</b>
SRS BENCHMARK 8105B	SRS ZEUS 0509Z	205 Weight	<b>712</b>
<b>SRS ELEMENT 4154E</b>	SRS SHANNON 8105U	Weaning Rat	<b>97</b>
SRS MORGAN 4154B	PRK YELLOWSTONE 966Y	Sire Avg BW	<b>42@75</b>
	SRS MORGAN 0938W	Dam Avg BW	<b>1@89</b>
SRS FLASH POINT 3149F	SRS DYNASTY 667D	Dam WN Prod	<b>1@97</b>
<b>SRS MISS MONTANA 0114H</b>	SRS FOOTLOOSE 3149A		
SRS MISS MONTANA 4141B	TOMBSTONE 050		
	PRK MISS MONTANA 503R		

American Salers EPDs									
CED	BW	WW	YW	MWW	Milk	Marb	Carcass	REA	Back Fat
+12.7	+0.7	+69	+103	+53	+18	+0.1	+28.4	+51	-.03
<b>SCURRED 50%</b>						<b>HOMOZYGOUS BLACK</b>			

- Dam has a beautiful udder and a great look
- A very level-designed, balanced bull



**120 SRS FLASHPOINT 4147K**  
 tattoo: SRS4147K birth: 3/16/2022 reg #: S753265

<b>OPTIMIZER BULL</b>		Birth Weight	<b>93</b>
SRS DYNASTY 667D	CONNEALEY GREELEY	205 Weight	<b>784</b>
<b>SRS FLASH POINT 3149F</b>	SRS FINICKY 0838U	Weaning Rat	<b>107</b>
SRS FOOTLOOSE 3149A	TOMBSTONE 050	Sire Avg BW	<b>55@92</b>
	SRS FOOTLOOSE 9927J	Dam Avg BW	<b>7@80</b>
SRS ZEUS 0509Z	SITZ UNCOMMON	Dam WN Prod	<b>7@101</b>
<b>SRS PONY TAIL 4147B</b>	PRK MISS MONTANA 503R		
SRS PONY TAIL 0778T	SRS REMBRANDT 8300R		
	SRS PONY TAIL 0302N		

American Salers EPDs									
CED	BW	WW	YW	MWW	Milk	Marb	Carcass	REA	Back Fat
+10.9	+2.1	+67	+102	+52	+19	+0.1	+28.1	+52	-.03
<b>SCURRED 50%</b>						<b>RED</b>			

- A moderate, square made bull that is a little younger
- Maternal brother to El Dorado
- Dam is a nine year old cow that simply doesn't miss
- She is a tidy fronted, cow with lots of capacity and a great udder



**119 SRS ELEMENT 0113K**  
 tattoo: SRS0113K birth: 1/15/2022 reg #: P753259

<b>OPTIMIZER BULL</b>		Birth Weight	<b>80</b>
SRS BENCHMARK 8105B	SRS ZEUS 0509Z	205 Weight	<b>673</b>
<b>SRS ELEMENT 4154E</b>	SRS SHANNON 8105U	Weaning Rat	<b>92</b>
SRS MORGAN 4154B	PRK YELLOWSTONE 966Y	Sire Avg BW	<b>42@75</b>
	SRS MORGAN 0938W	Dam Avg BW	<b>1@80</b>
MUSGRAVE FEATURE	MUSGRAVE SKY HIGH 1535	Dam WN Prod	<b>1@92</b>
<b>SRS COLUMBIA 0113H</b>	MUSGRAVE PRIDE 1416-166		
SRS COLUMBIA 4108B	LYZS ROWDY 28R		
	SRS COLUMBIA 0530R		

American Salers EPDs									
CED	BW	WW	YW	MWW	Milk	Marb	Carcass	REA	Back Fat
+12.9	-1.4	+62	+93	+46	+15	+0.2	+23.5	+44	-.02
<b>POLLED 50%</b>						<b>HOMOZYGOUS BLACK</b>			

- A level-made, big-topped bull that has a lot of capacity
- Dam is an exciting young female that is a maternal sister to SRS Entity



SRS Bottomline 4147E  
 Maternal Brother to Lot 120



# 121 SRS FLASHPOINT 8102K

tattoo: SRS8102K birth: 2/21/2022 reg #: P753271

**OPTIMIZER BULL**

SRS DYNASTY 667D  
**SRS FLASH POINT 3149F**  
SRS FOOTLOOSE 3149A

HA DELEGATE 6015  
**SRS MISS MONTANA 8102F**  
PRK MISS MONTANA 503R

CONNEALY GREELEY  
SRS FINICKY 0838U

TOMBSTONE 050  
SRS FOOTLOOSE 9927J

HA OUTSIDE 3008  
HA RITO LADY 0845

SRS NOKIA 9722N  
PRK MISS MONTANA 313N

Birth Weight	94
205 Weight	740
Weaning Rat	101
Sire Avg BW	55@92
Dam Avg BW	3@84
Dam WN Prod	3@102

American Salers EPDs									
CED	BW	WW	YW	MWW	Milk	Marb	Carcass	REA	Back Fat
+10.1	+2.9	+68	+107	+53	+19	+0.1	+29.9	+61	-.03
<b>POLLED 50% HOMOZYGOUS BLACK</b>									

• A long-designed bull that is correct made



**MATERNAL BROTHER**

SRS General 8102J  
Maternal Brother to Lot 121

# 123 SRS FLASHPOINT 2135K

tattoo: SRS2135K birth: 2/24/2022 reg #: S753261

**OPTIMIZER BULL**

SRS DYNASTY 667D  
**SRS FLASH POINT 3149F**  
SRS FOOTLOOSE 3149A

SRS TRADEMARK 732T  
**SRS RUSSETT 2135Z**  
SRS RUSSETT 0305N

CONNEALY GREELEY  
SRS FINICKY 0838U

TOMBSTONE 050  
SRS FOOTLOOSE 9927J

CONNEALY ONWARD  
OX BOW EMMA E 732

SRS LATIGO 9633L  
SRS RUSSET RED 9205B

Birth Weight	97
205 Weight	784
Weaning Rat	107
Sire Avg BW	55@92
Dam Avg BW	9@94
Dam WN Prod	8@109

American Salers EPDs									
CED	BW	WW	YW	MWW	Milk	Marb	Carcass	REA	Back Fat
+8.5	+3.9	+76	+118	+59	+21	+0.1	+30.4	+68	-.03
<b>SCURRED 50% HOMOZYGOUS BLACK</b>									

• A high-performance, long-made bull  
• Maternal brother to SRS GTO  
• His dam is one of our highest performance optimizer cows



**REFERENCE SIRE**

SRS Governor 4111G

# 122 SRS FLASHPOINT 3160K

tattoo: SRS3160K birth: 2/27/2022 reg #: P753264

**OPTIMIZER BULL**

SRS DYNASTY 667D  
**SRS FLASH POINT 3149F**  
SRS FOOTLOOSE 3149A

SRS UPRISING 0059U  
**SRS SUZETTE 3160A**  
SRS SUZETTE 0675S

CONNEALY GREELEY  
SRS FINICKY 0838U

TOMBSTONE 050  
SRS FOOTLOOSE 9927J

SRS SAINT 0218S  
SRS KYLA 0059K

S A V 8180 TRAVELER 004  
SRS CHARISMA 9331C

Birth Weight	105
205 Weight	809
Weaning Rat	111
Sire Avg BW	55@92
Dam Avg BW	8@88
Dam WN Prod	8@104

American Salers EPDs									
CED	BW	WW	YW	MWW	Milk	Marb	Carcass	REA	Back Fat
+6.4	+4.5	+76	+117	+59	+21	+0.1	+31.3	+65	-.02
<b>POLLED 50% BLACK</b>									

• A powerful made bull with added length  
• Maternal brother to SRS Dialed In  
• Dam is a ten year old cow that has continued to prove herself year after year



**MATERNAL BROTHER**

SRS Dialed In 3160D  
Maternal Brother to Lot 122

# 124 SRS GOVERNOR 8137K

tattoo: SRS8137K birth: 1/23/2022 reg #: P753316

**OPTIMIZER BULL**

SRS ENGAGE 4221E  
**SRS GOVERNOR 4111G**  
SRS LACE 4111B

PRK CAPTAIN 098C  
**SRS RUSSETT 8137F**  
SRS RUSSETT 5163C

SITZ BRIGADE 12074  
SRS MANOR 4221B

SRS YUMA 072Y  
SRS LACE 0814U

SRS ARIAT 270A  
PRK VIRGINIA 098X

SRS AMERICAN 0472A  
SRS RUSSETT 3147A

Birth Weight	86
205 Weight	738
Weaning Rat	101
Sire Avg BW	36@82
Dam Avg BW	3@78
Dam WN Prod	3@99

American Salers EPDs									
CED	BW	WW	YW	MWW	Milk	Marb	Carcass	REA	Back Fat
+13.5	-1.8	+72	+108	+60	+24	+0.1	+35.9	+62	-.03
<b>POLLED 50% HOMOZYGOUS BLACK</b>									

• A growthy type of bull



# 125 SRS GOVERNOR 9133K

tattoo: SRS9133K birth: 2/13/2022 reg #: S753323

**OPTIMIZER BULL**

SRS ENGAGE 4221E  
**SRS GOVERNOR 4111G**  
SRS LACE 4111B

SRS DYNASTY 667D  
**SRS RUSSETT 9133G**  
SRS RUSSETT 5164C

SITZ BRIGADE 12074  
SRS MANOR 4221B

SRS YUMA 072Y  
SRS LACE 0814U

CONNEALY GREELEY  
SRS FINICKY 0838U

SRS AMERICAN 0472A  
SRS RUSSETT 3148A

Birth Weight	91
205 Weight	744
Weaning Rat	102
Sire Avg BW	36@82
Dam Avg BW	2@90
Dam WN Prod	2@105

American Salers EPDs									
CED	BW	WW	YW	MWW	Milk	Marb	Carcass	REA	Back Fat
+10.9	+1.1	+79	+121	+61	+21	+0.1	+40.6	+68	-.03
<b>SCURRED 50% HOMOZYGOUS BLACK</b>									

• Dam is a great young cow with performance



# 126 SRS GOVERNOR 9112K

tattoo: SRS9112K birth: 2/8/2022 reg #: P753320

Birth Weight	72
205 Weight	722
Weaning Rat	99
Sire Avg BW	36@82
Dam Avg BW	4@71
Dam WN Prod	2@97

American Salers EPDs									
CED	BW	WW	YW	MWW	Milk	Marb	Carcass	REA	Back Fat
+14.1	-2.4	+71	+106	+55	+20	+0.1	+34.0	+59	-.02

Heifer Bull Potential **POLLED 50% HOMOZYGOUS BLACK**



# 127 SRS GOVERNOR 3173K

tattoo: SRS3173K birth: 1/27/2022 reg #: S753311

Birth Weight	78
205 Weight	691
Weaning Rat	95
Sire Avg BW	36@82
Dam Avg BW	8@81
Dam WN Prod	8@101

American Salers EPDs									
CED	BW	WW	YW	MWW	Milk	Marb	Carcass	REA	Back Fat
+14.9	-3.0	+66	+100	+55	+22	+0.1	+35.8	+58	-.02

Heifer Bull Potential **SCURRED 50% HOMOZYGOUS BLACK**

• A wide-topped bull with thickness



# 128 SRS ELEMENT 8115K

tattoo: SRS8115K birth: 3/2/2022 reg #: P753252

Birth Weight	85
205 Weight	762
Weaning Rat	104
Sire Avg BW	42@75
Dam Avg BW	3@80
Dam WN Prod	3@99

American Salers EPDs									
CED	BW	WW	YW	MWW	Milk	Marb	Carcass	REA	Back Fat
+13.1	-1.3	+66	+96	+49	+16	+0.1	+26.7	+51	-.03

Heifer Bull Potential **POLLED 50% HOMOZYGOUS BLACK**

- A good performing bull
- Dam is a moderately designed female



# 129 SRS ELEMENT 9137K

tattoo: SRS9137K birth: 2/20/2022 reg #: P753255

Birth Weight	84
205 Weight	680
Weaning Rat	93
Sire Avg BW	42@75
Dam Avg BW	2@80
Dam WN Prod	2@95

American Salers EPDs									
CED	BW	WW	YW	MWW	Milk	Marb	Carcass	REA	Back Fat
+11.7	-0.8	+62	+91	+46	+15	+0.1	+24.5	+46	-.03

Heifer Bull Potential **POLLED 50% HOMOZYGOUS BLACK**



# 130 SRS ELEMENT 5194K

tattoo: SRS5194K birth: 3/5/2022 reg #: P753250

Birth Weight	81
205 Weight	752
Weaning Rat	103
Sire Avg BW	42@75
Dam Avg BW	5@84
Dam WN Prod	5@100

American Salers EPDs									
CED	BW	WW	YW	MWW	Milk	Marb	Carcass	REA	Back Fat
+14.7	-2.4	+60	+83	+49	+19	+0.1	+23.4	+39	-.03

Heifer Bull Potential **POLLED 50% HOMOZYGOUS BLACK**

- A March bull with good performance



Optimizer Bulls



SRS Battalion 3173D  
Maternal Brother to Lot 127

“We keep going back year after year because of the well balanced traits of these cattle. The bulls are grown right with great feet and have the longevity to hold up in our challenging environment. Our females out of Skinner genetics consistently have great dispositions with excellent mothering ability and udder quality. This all adds up to trouble free cattle.”

- Ross Morgan, Hilger Ranch, MT



# 131 SRS ELEMENT 9140K

tattoo: SRS9140K birth: 3/3/2022 reg #: P753256

**OPTIMIZER BULL**

Birth Weight	82
205 Weight	758
Weaning Rat	104
Sire Avg BW	42@75
Dam Avg BW	2@86
Dam WN Prod	2@105

SRS BENCHMARK 8105B SRS ZEUS 0509Z  
SRS ELEMENT 4154E SRS SHANNON 8105U  
SRS MORGAN 4154B PRK YELLOWSTONE 966Y  
SRS MORGAN 0938W

SRS DYNASTY 667D CONNEALY GREELEY  
SRS COMPLIMENT 9140G SRS FINICKY 0838U  
SRS COMPLIMENT 6117D SRS BOTTOM LINE 978B  
SRS COMPLIMENT 1023X

American Salers EPDs									
CED	BW	WW	YW	MWW	Milk	Marb	Carcass	REA	Back Fat
+10.9	-0.8	+67	+98	+50	+17	+0.1	+28.8	+53	-.03
POLLED 50% HOMOZYGOUS BLACK									

• A moderate, thick made bull



# 134 SRS GOVERNOR 9105K

tattoo: SRS9105K birth: 2/11/2022 reg #: P753319

**OPTIMIZER BULL**

Birth Weight	82
205 Weight	726
Weaning Rat	99
Sire Avg BW	36@82
Dam Avg BW	3@75
Dam WN Prod	2@96

SRS ENGAGE 4221E SITZ BRIGADE 12074  
SRS GOVERNOR 4111G SRS MANOR 4221B  
SRS LACE 4111B SRS YUMA 072Y  
SRS LACE 0814U

SRS DYNASTY 667D CONNEALY GREELEY  
SRS SEIKO 9105G SRS FINICKY 0838U  
SRS SEIKO 1162 Y SRS UPRISEING 0059U  
SRS SEIKO 0670S

American Salers EPDs									
CED	BW	WW	YW	MWW	Milk	Marb	Carcass	REA	Back Fat
+11.9	-0.3	+76	+114	+57	+19	+0.1	+41.3	+.64	-.02
POLLED 50% HOMOZYGOUS BLACK									

Heifer Bull Potential



# 135 SRS GOVERNOR 9136K

tattoo: SRS9136K birth: 2/10/2022 reg #: P753324

**OPTIMIZER BULL**

Birth Weight	81
205 Weight	672
Weaning Rat	92
Sire Avg BW	36@82
Dam Avg BW	2@82
Dam WN Prod	2@96

SRS ENGAGE 4221E SITZ BRIGADE 12074  
SRS GOVERNOR 4111G SRS MANOR 4221B  
SRS LACE 4111B SRS YUMA 072Y  
SRS LACE 0814U

SRS DYNASTY 667D CONNEALY GREELEY  
SRS LACIE 9136G SRS FINICKY 0838U  
SRS MADISON 6106D SRS BOTTOM LINE 978B  
SRS MADISON 2182Z

American Salers EPDs									
CED	BW	WW	YW	MWW	Milk	Marb	Carcass	REA	Back Fat
+11.6	-0.3	+71	+108	+55	+20	+0.1	+37.3	+.64	-.02
POLLED 50% HOMOZYGOUS BLACK									

• An attractive bull in the pen



REFERENCE SIRE

SRS Governor 4111G

# 132 SRS GOVERNOR 7147K

tattoo: SRS7147K birth: 1/30/2022 reg #: P753313

**OPTIMIZER BULL**

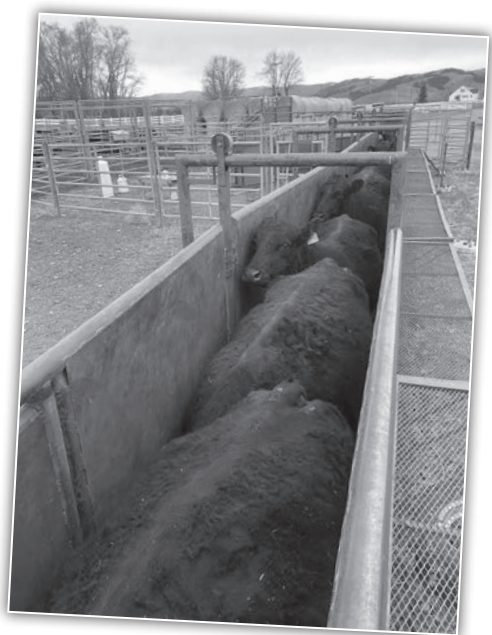
Birth Weight	88
205 Weight	767
Weaning Rat	105
Sire Avg BW	36@82
Dam Avg BW	4@76
Dam WN Prod	4@102

SRS ENGAGE 4221E SITZ BRIGADE 12074  
SRS GOVERNOR 4111G SRS MANOR 4221B  
SRS LACE 4111B SRS YUMA 072Y  
SRS LACE 0814U

SRS BATTALION 0984B SRS ZEUS 0509Z  
SRS SEIKO 7147E SRS SEIKO 0984W  
SRS SEIKO 5179C SRS AGREEMENT 0361A  
SRS SEIKO 1162 Y

American Salers EPDs									
CED	BW	WW	YW	MWW	Milk	Marb	Carcass	REA	Back Fat
+13.9	-1.6	+73	+107	+63	+27	+0.1	+40.7	+.61	-.03
POLLED 50% HOMOZYGOUS BLACK									

• Maternal brother to SRS Gungho



# 133 SRS GOVERNOR 8114K

tattoo: SRS8114K birth: 1/28/2022 reg #: P753314

**OPTIMIZER BULL**

Birth Weight	82
205 Weight	718
Weaning Rat	98
Sire Avg BW	36@82
Dam Avg BW	3@79
Dam WN Prod	3@98

SRS ENGAGE 4221E SITZ BRIGADE 12074  
SRS GOVERNOR 4111G SRS MANOR 4221B  
SRS LACE 4111B SRS YUMA 072Y  
SRS LACE 0814U

SRS DIALED IN 3160D SRS BULLSEYE 592B  
SRS PRICELESS 8114F SRS SUZETTE 3160A  
SRS PRICELESS 3113A SRS NEVADA 9378N  
SRS PRICELESS 0881U

American Salers EPDs									
CED	BW	WW	YW	MWW	Milk	Marb	Carcass	REA	Back Fat
+12.1	-1.6	+69	+101	+58	+23	+0.1	+31.4	+.63	-.03
POLLED 50% HOMOZYGOUS BLACK									

Heifer Bull Potential





REFERENCE  
SIRE

SRS Flash Point 3149F

**138 SRS FLASHPOINT 9122K**  
tattoo: SRS9122K birth: 3/6/2022 reg #: P753274

<b>OPTIMIZER BULL</b>		CONNEALY GREELEY SRS FINICKY 0838U		Birth Weight	<b>88</b>
<b>SRS FLASH POINT 3149F</b>		TOMBSTONE 050 SRS FOOTLOOSE 9927J		205 Weight	<b>726</b>
SRS DYNASTY 667D		SRS BULLSEYE 592B SRS SUZETTE 3160A		Weaning Rat	<b>99</b>
SRS FOOTLOOSE 3149A		SRS ZEUS 0509Z SRS BAUBLE 0780T		Sire Avg BW	<b>55@92</b>
SRS DIALED IN 3160D				Dam Avg BW	<b>2@84</b>
<b>SRS BAUBLE 9122G</b>				Dam WN Prod	<b>2@99</b>
SRS BAUBLE 4148B					

American Salers EPDs									
CED	BW	WW	YW	MWW	Milk	Marb	Carcass	REA	Back Fat
+8.0	+2.6	+66	+101	+50	+17	+0.1	+24.1	+57	-.03
<b>POLLED 50% HOMOZYGOUS BLACK</b>									



**139 SRS FLASHPOINT 9131K**  
tattoo: SRS9131K birth: 3/8/2022 reg #: P753275

<b>OPTIMIZER BULL</b>		CONNEALY GREELEY SRS FINICKY 0838U		Birth Weight	<b>98</b>
<b>SRS FLASH POINT 3149F</b>		TOMBSTONE 050 SRS FOOTLOOSE 9927J		205 Weight	<b>709</b>
SRS DYNASTY 667D		SRS BULLSEYE 592B SRS SUZETTE 3160A		Weaning Rat	<b>97</b>
SRS FOOTLOOSE 3149A		SRS AMERICAN 0472A SRS JULIET 1151 Y		Sire Avg BW	<b>55@92</b>
SRS DIALED IN 3160D				Dam Avg BW	<b>2@88</b>
<b>SRS JULIET 9131G</b>				Dam WN Prod	<b>2@100</b>
SRS JULIET 5142C					

American Salers EPDs									
CED	BW	WW	YW	MWW	Milk	Marb	Carcass	REA	Back Fat
+4.7	+4.0	+69	+105	+52	+17	+0.1	+24.5	+58	-.03
<b>POLLED 50% BLACK</b>									



**140 SRS STUNNER 4108K**  
tattoo: SRS4108K birth: 1/27/2022 reg #: P753283

<b>OPTIMIZER BULL</b>		CONNEALY CAPITALIST 028 LD DIXIE ERICA 2053		Birth Weight	<b>87</b>
<b>MUSGRAVE 316 STUNNER</b>		MCATL PURE PRODUCT 903-55 MCATL BLACKBIRD 831-1378 MCATL BLACKBIRD 1378-573		205 Weight	<b>583</b>
LD CAPITALIST 316		JSR CUMMINGS 169 LYZS MELODY 54M		Weaning Rat	<b>100</b>
SRS COLUMBIA 4108B		MAC LANSING 302L SRS COLUMBIA 0324N		Sire Avg BW	<b>51@79</b>
SRS COLUMBIA 0530R				Dam Avg BW	<b>7@88</b>
				Dam WN Prod	<b>6@102</b>

American Salers EPDs									
CED	BW	WW	YW	MWW	Milk	Marb	Carcass	REA	Back Fat
+10.9	-0.6	+69	+105	+52	+17	+0.4	+37.2	+45	+0.2
<b>POLLED 50% BLACK</b>									

- A bull that got weaned early but has a great type and kind
- Maternal brother to SRS Entity



MATERNAL  
BROTHER

SRS Entity 4108E  
Maternal Brother to Lot 140

**136 SRS FLASHPOINT 3126K**  
tattoo: SRS3126K birth: 2/17/2022 reg #: S753262

<b>OPTIMIZER BULL</b>		CONNEALY GREELEY SRS FINICKY 0838U		Birth Weight	<b>86</b>
<b>SRS FLASH POINT 3149F</b>		TOMBSTONE 050 SRS FOOTLOOSE 9927J		205 Weight	<b>803</b>
SRS DYNASTY 667D		CONNEALY ONWARD OX BOW EMMA E 732		Weaning Rat	<b>100</b>
SRS FOOTLOOSE 3149A		MAC LANSING 302L SRS JULIET 9609F		Sire Avg BW	<b>55@92</b>
SRS TRADEMARK 732T				Dam Avg BW	<b>11@81</b>
<b>SRS JULIET 3126A</b>				Dam WN Prod	<b>9@103</b>
SRS JULIET 0520R					

American Salers EPDs									
CED	BW	WW	YW	MWW	Milk	Marb	Carcass	REA	Back Fat
+8.3	+3.3	+68	+104	+53	+19	+0.1	+25.9	+57	-.02
<b>SCURRED 50% RED</b>									

- Twin that weaned off at over 800#
- Dam has been a consistent producer



MATERNAL  
BROTHER

SRS Battalion 3126E  
Maternal Brother to Lot 136

**137 SRS FLASHPOINT 9154K**  
tattoo: SRS9154K birth: 3/2/2022 reg #: P753278

<b>OPTIMIZER BULL</b>		CONNEALY GREELEY SRS FINICKY 0838U		Birth Weight	<b>85</b>
<b>SRS FLASH POINT 3149F</b>		TOMBSTONE 050 SRS FOOTLOOSE 9927J		205 Weight	<b>759</b>
SRS DYNASTY 667D		SRS BOTTOM LINE 978B SRS PONY TAIL 4147B		Weaning Rat	<b>104</b>
SRS FOOTLOOSE 3149A		PRK CAPTAIN 098C SRS CAMELOT 2131Z		Sire Avg BW	<b>55@92</b>
SRS EL DORADO 4147E				Dam Avg BW	<b>3@79</b>
<b>SRS CAMELOT 9154G</b>				Dam WN Prod	<b>2@104</b>
SRS CAMELOT 7117E					

American Salers EPDs									
CED	BW	WW	YW	MWW	Milk	Marb	Carcass	REA	Back Fat
+10.4	+1.5	+66	+101	+51	+19	+0.1	+28.6	+54	-.02
<b>POLLED 50% BLACK</b>									



Optimizer Bulls



# SRS DONOR COWS

# SRS BREED BULLS





**ANGUS  
OPTIMIZERS  
SALERS**

# SRS BREED BULLS

**Angus**

<u>Lot</u>	<u>Herd ID</u>	<u>Lot</u>	<u>Herd ID</u>	<u>Lot</u>	<u>Herd ID</u>	<u>Two Year</u>	<u>Lot</u>	<u>Herd ID</u>	
1	0284K	24	283K	46	8223K	<b>Old Bulls</b>	82	8231K	
2	0288K	25	9300K	47	8233K	<u>Lot Herd ID</u>	83	728K	
3	5221K	26	8289K	48	8209K	68	2224J	84	320K
4	0280K	27	6155K	49	404K	69	8213J	85	0212K
5	1047K	28	3162K	50	3266K	70	8289J	86	0217K
6	5220K	29	410K	51	8245K	71	8222J	87	511K
7	7158K	30	6112K	52	8294K	72	8309J	88	0203K
8	501K	31	6111K	53	506K	73	8227J	89	0211K
9	4227K	32	7269K	54	2262K	74	8229J	90	0275K
10	0209K	33	3213K	55	302K	75	7205J	91	0254K
11	2256K	34	0286K	56	3175K	76	5201J	92	0232K
12	0268K	35	635K	57	9293K	77	7201J	93	0291K
13	4251K	36	0210K	58	8235K	78	911J	94	0298K
14	0207K	37	2213K	59	9204K	79	8272J	95	0276K
15	0242K	38	8151K	60	742K	80	531J	96	917K
16	503K	39	9272K	61	730K	81	2284J	97	6207K
17	307K	40	0250K	62	7273K			98	409K
18	8309K	41	5207K	63	5218K			99	023K
19	301K	42	9255K	64	7282K			100	3222K
20	7154K	43	6109K	65	6242K			101	8263K
21	3136K	44	9248K	66	7125K			102	6259K
22	0279K	45	8246K	67	4154K			103	8257K
23	9279K							104	8239K
								105	5643K

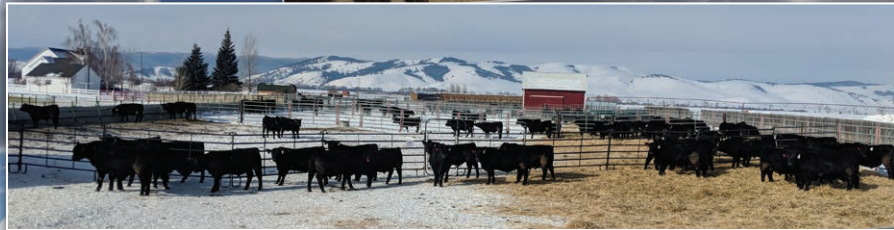
**Optimizer**

<u>Lot</u>	<u>Herd ID</u>	<u>Lot</u>	<u>Herd ID</u>	<u>Lot</u>	<u>Herd ID</u>
106	5191K	118	0114K	130	5194K
107	4183K	119	0113K	131	9140K
108	9113K	120	4147K	132	7147K
109	3147K	121	8102K	133	8114K
110	6152K	122	3160K	134	9105K
111	5163K	123	2135K	135	9136K
112	0132K	124	8137K	136	316K
113	0112K	125	9133K	137	9154K
114	0145K	126	9112K	138	9122K
115	0144K	127	3173K	139	9131K
116	0122K	128	8115K	140	4108K
117	7126K	129	9137K		





*Thanks for joining us!*





**February 24, 2023**

**1:00 pm**

**At the Ranch • Hall, Montana**

406/ 288-3872  
skinnerranch@blackfoot.net  
162 Farm to Market West  
Hall, MT 59837-9621

Presorted  
**FIRST CLASS**  
US Postage  
Paid  
Ballyhoo Printing  
59457

**FIRST CLASS**