

# BIG DRY ANGUS RANCH

36th Annual McRae's

# Production Auction

**Thursday,  
April 18, 2024**

Lunch at noon  
Sale begins at 1:00 p.m.

**Glasgow  
Stockyards**



Visit us on the web @  
[www.bigdryangus.com](http://www.bigdryangus.com)

Seedstock Quality  
Commercial  
Common Sense

Brent and Hillari  
McRae

406-977-2778

[bdar@outlook.com](mailto:bdar@outlook.com)

Jack and Kathy  
McRae

406-557-6266

[jmcrae@midrivers.com](mailto:jmcrae@midrivers.com)

**SELLING 80 YEARLING ANGUS BULLS**



Big Dry Angus Ranch  
 Annual Production Sale April 18, 2024  
 Brent & Hillari McRae (c) 406-977-2778 406-977-2777  
 Jack & Kathy McRae (h) 406-557-6266 (c) 977-6121  
 John McRae 406-852-4481 Ben McRae 406-852-4608



## General Sale Information

Sale Held at Glasgow Stockyards Inc.  
 Glasgow MT.

· **G. S. I phone # 406-228-9306**

**Brent McRae Cell# 406-977-2778**

**John McRae Cell # 406-852-4481**

**Ben McRae Cell # 406-852-4608**

\*Sale held under the Suggested Sale terms and conditions as adopted by the American Angus Association.

\*Auctioneer: Col. Joe Goggins; 406-861-5664

\*Kurt Kangus...406-366-4190  
*Angus Journal/American Angus Association*

\*Catalog order is birth order

\*Sale order is Catalog lot order.

\*Free delivery offered on all bulls to Montana. Out of state at cost.

\*\$50 cash per bull if you haul your own from the sale sight.

\*Buyer is responsible for heifer delivery.

\*Herd health and bulls fertility tested by Dr. Lance Hughes DVM, Hobson, MT.

\*All bulls Parentage verified and Genomic Tested Free of all lethal genetic defects

### The Big Dry Guarantee

All bulls are guaranteed against breeding injury for the first breeding season (90 days from turnout). If a replacement bull is available, he will be provided, or credit, minus salvage value, toward 1 bull will be given for the following year's sale. Please report injury by October 1.



### Online and Phone Bidding

If you are unable to attend the sale, Northern Livestock Video Auction will be carrying the sale live on the internet at [www.cattleUSA.com](http://www.cattleUSA.com). Contact Northern Livestock Video at 1-866-616-5035 for details and to register. You can then bid live on the phone at 406-245-0889 through Northern Livestock Video during the auction. To view the catalog online, pre-sale video and additional information on the sale offering go to [www.northernlivestockvideo.com](http://www.northernlivestockvideo.com) and click on the Big Dry Angus sale. If you have questions, contact **Bo Bevis..(406)390-3134**.

### Our Cattle are

PROUDLY



**MADE IN THE USA**



# Big Dry Angus Ranch

## Annual Production Sale April 18, 2024

Brent & Hillari McRae (c) 406-977-2778 406-977-2777

Jack & Kathy McRae (h) 406-557-6266 (c) 977-6121

John McRae 406-852-4481 Ben McRae 406-852-4608



We welcome you to appraise our offering for our 36th Annual Bull Sale to be held April 18 @ 1:00 p.m. at Glasgow Stockyards Inc., Glasgow, MT. We will have lunch at the sale site beginning at noon.

We certainly say “thank you”, our customers, many who have become life-long friends, for your continued interest and support. As we enter the 61st year of raising Registered Angus, and now, with the 4th generation, John and Ben, actively involved; doing about anything that needs to be done on the ranch. We realize how fortunate we are, as a family, to be in the Angus business with your friendship and continued interest and support of our program.

We are very proud of the 80 yearling Angus bulls and 10 yearling heifers we are offering. They are the culmination of over 60 years of breeding Angus cattle on the Big Dry, always with the cow-calf producer in mind.

Scrotal measurements, Yearling Weights, and all EPD's will be updated to include genomic test results prior to sale. Accuracy Enhanced EPD's are available by calling us, or by typing in the registration number at [www.angus.org](http://www.angus.org)

If you have any questions about the sale offering, please contact us. The bull and heifers are available for viewing at our ranch.

The McRae Family's at Big Dry Angus Ranch



Free delivery in Montana or \$50 cash per bull if you haul your own from the sale site. Out of State deliveries will be at cost. It is the buyer’s responsibility take delivery of heifers from the sale site.

**Though our sale is “in-person” at Glasgow Stockyards Inc., we are again working with Northern Livestock Video to carry our sale via the internet. Videos of the bulls can be found at [www.northernlivestockvideo.com](http://www.northernlivestockvideo.com)**

**Contact information for internet or phone bidding is found on our information page. I would remind you to contact Northern Video at least a day ahead of time to get signed up and obtain your buyers number.**





## Connealy Cool 39L

Tattoo: 39L      DOB: 2/9/2013      Reg. No. # 17586776

Connealy All Around

**Sire:** Connealy Heat 0243  
Bunty Lanna of Conanga 556

H A Power Alliance 1025

**Dam:** JMc Jeena Allie 8345 5399  
Jeena of Conanga 357

S Values	
SM	88
SW	67
SF	105
SG	50
SB	155

Big Dry Angus owned, deceased. Semen available.

Cool has exceeded our expectations as a maternal sire, daughters and grand-daughters play an important role within our cowherd. Sons have met favor with our commercial customers. We have retained 2 sons for in-herd use and are represented in this sale.

EPDs Acc					Cacass EPDs Acc				
CED	Birth	Wean	Year	Milk	SC	Wt.	Marb.	Ribeye	Fat
+12	+1.1	+65	+110	+24	+1.73	+61	+0.55	+0.89	+0.036
0.78	0.93	0.91	0.85	0.74	0.87	0.68	0.65	0.61	0.64



## Sitz Stellar 7300

Tattoo: 7300      DOB: 2/28/2020      Reg. No. 19768983

Mohnen Substantial 272

**Sire:** Sitz Stellar 726D  
SITZ Pride 200B

Koupals B&B Titan 3013

**Dam:** Sitz Blackbird 3136  
Sitz Blackbird 2629

S Values	
SM	62
SW	60
SF	89
SG	43
SB	132

Big Dry Angus owned. Semen available.

Purchased at the 2021 Fall Sitz Angus Ranch sale, as our choice of the Stellar sons offered. Maternally, 7300's dam and grandam have above average weaning ratio's in the Sitz herd. 7300 is very eye-appealing and stands on outstanding feet. 7300 is a future cowmaker with calving ease.

EPDs Acc					Cacass EPDs Acc				
CED	Birth	Wean	Year	Milk	SC	Wt.	Marb.	Ribeye	Fat
+7	-0.6	+60	+112	+28	+1.31	+41	+0.56	+0.67	+0.078
0.38	0.65	0.58	0.44	0.35	0.49	0.42	0.37	0.36	0.32



## Diamond Bronc H107

Tattoo: H107      DOB: 2/18/2020      Reg. No. 19936647

Baldrige Bronc

**Sire:** 2XL Bronc 8153  
2XL Clova Pride 6230

21AR Roundup 7005

**Dam:** Diamond Trojan Erica 0824  
Diamond Trojan Erica 2u04

S Values	
SM	85
SW	85
SF	89
SG	69
SB	158

Big Dry Angus owned. Semen available.      SB 158

Purchased as the top-selling bull at the 2021 Diamond Dot sale. Bronc sires calving-ease with weaning and yearling growth. He is "heifer Friendly". Bronc exhibited excellent libido as a natural service sire on the 2-coming 3's. Sons have excellent thickness and length.

EPDs Acc					Cacass EPDs Acc				
CED	Birth	Wean	Year	Milk	SC	Wt.	Marb.	Ribeye	Fat
+12	-1.0	+79	+134	+30	+0.85	+59	+0.98	+0.79	+0.049
0.43	0.69	0.62	0.40	0.34	0.42	0.40	0.35	0.35	0.31





## S McIntock 9702

Tattoo: 9702      DOB: 3/17/2019      Reg. No. 19437694

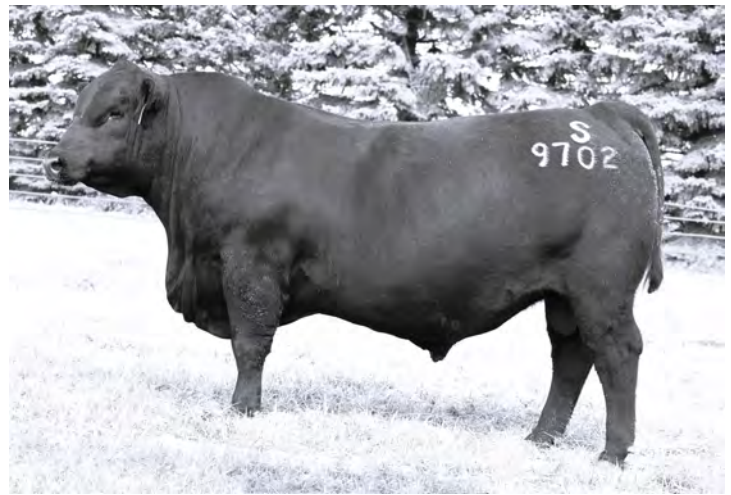
Tehama Revere  
Sire: S Thrive JAS 5515  
S Selena 201

Vision Unanimous 1418  
Dam: S Bessie 5544  
S Bessie 0455

S Values	
SM	48
SW	61
SF	121
SG	33
SB	154

Big Dry Angus owned, deceased. Semen available.  
McIntock was the 2nd high-selling bull at the 2020 Spickler North sale, overwhelming the group in terms of muscle, length and volume.  
McIntock's first sons were cowman's favorites last year and sure could be again this year. The daughters are really-really nice. More coming

EPDs Acc					Cacass EPDs Acc				
CED	Birth	Wean	Year	Milk	SC	Wt.	Marb.	Ribeye	Fat
+7	+2.0	+85	+162	+18	+1.18	+73	+0.27	+0.77	+0.034
0.40	0.74	0.68	0.54	0.35	0.58	0.46	0.40	0.40	0.38



## S Jump Start 923

Tattoo: 923      DOB: 3/2/2019      Reg. No. 19472128

Tehama Revere  
Sire: S Powerpoint WS 5503  
S Queen Essa 248

Shipwheel Chinook  
Dam: S Gloria 0406  
S Gloria 858

S Values	
SM	79
SW	57
SF	66
SG	58
SB	123

Big Dry owned, deceased. Semen available.  
Jump Start was the 2nd high-selling bull at the Spickler South 2020 sale. Siring calving ease, reasonable growth with exceptional maternal traits, Jump Start has earned our respect as a cowmaker supreme. We continue to use 923. Sired the top-selling bull last year to Whispering Winds.

EPDs Acc					Cacass EPDs Acc				
CED	Birth	Wean	Year	Milk	SC	Wt.	Marb.	Ribeye	Fat
+13	+0.7	+61	+104	+21	+0.98	+33	+0.93	+0.52	+0.111
0.51	0.75	0.70	0.58	0.40	0.59	0.46	0.41	0.41	0.38



## S A V Specialist 8896

Tattoo: 8896      DOB: 12/29/2017      Reg. No. 19253374

S A V Registry 2831  
Sire: S A V Sensation 5615  
S A V Blackcap May 4136

S A V Resource 1441  
Dam: S A V Madame Pride 3304  
S A V Madame Pride 0412

S Values	
SM	64
SW	60
SF	98
SG	23
SB	121

Big Dry owned, deceased. Semen available.  
Purchased at the 2019 Schaff Angus Valley Sale. Specialist has far exceeded our expectations as a cowmaker. Daughters have marvelous dispositions, high quality udders, wean big calves and rebreed under Big Dry conditions. We have retained a son for future use.

EPDs Acc					Cacass EPDs Acc				
CED	Birth	Wean	Year	Milk	SC	Wt.	Marb.	Ribeye	Fat
+7	+0.4	+74	+131	+18	+0.98	+49	+0.09	+0.45	+0.001
0.40	0.77	0.73	0.50	0.41	0.60	0.44	0.35	0.36	0.33





## Sitz Intuition

Tattoo: 9929      DOB: 2/19/2019      Reg. No. 19381619

Mohnen Substantial 272

**Sire:** Sitz Profile 1160  
SITZ Blackbird 334

Jauer 353 Traveler 589 27

**Dam:** Sitz Florabelle Fanny 5053  
Sitz Florabelle Fanny 1293

S Values	
SM	67
SW	67
SF	81
SG	75
SB	156

A.I. Sire from ST Genetics

Used Intuition on our heifers for 2 years with very good success. Intuition is promoted as a "foot improver" and a high marbling outcross sire. We've found him to sire attractive, good disposition bulls and heifers. First calf heifers have nice udders.

EPDs Acc						Cacass EPDs Acc				
CED	Birth	Wean	Year	Milk	SC	Wt.	Marb.	Ribeye	Fat	
+7	+0.3	+65	+116	+31	+1.18	+38	+1.11	+0.54	+0.014	
0.71	0.85	0.85	0.82	0.33	0.81	0.56	0.50	0.49	0.50	



## SydGen Blueprint

Tattoo: 7169-1      DOB: 1/24/2017      Reg. No. 18780636

Summitcrest Complete 1P55

**Sire:** KM Broken Bow 002  
Summitcrest Princess 0P12

Sitz Investment 660Z

**Dam:** Sitz Florabelle Fanny 4735  
Sitz Florabelle Fanny 2683

S Values	
SM	95
SW	67
SF	96
SG	64
SB	160

A.I Sire, OriGen/ABS

After John purchased a bred heifer out of Blueprint, as well as a couple of heifers bred to Blueprint from Spickler North, we quickly appreciated the calving ease, vigor and disposition they displayed. They are moderate framed cattle that work well in our environment.

EPDs Acc						Cacass EPDs Acc			
CED	Birth	Wean	Year	Milk	SC	Wt.	Marb.	Ribeye	Fat
+6	+0.6	+65	+119	+31	+0.68	+48	+1.00	+0.29	+0.035
0.67	0.84	0.81	0.75	0.54	0.74	0.52	0.46	0.46	0.46



## Tehama Tahoe B767

Tattoo: B767      DOB: 9/6/2013      Reg. No. # 17817177

Sitz Upward 307R

**Sire:** Tehama Upward Y238  
Tehama Elite Blackbird T735

S A V Final Answer 0035

**Dam:** Tehama Mary Blackbird Y684  
Tehama Mary Blackbird T073

S Values	
SM	73
SW	90
SF	87
SG	67
SB	154

A.I. Sire, Accelerated/Select Sires.

Tahoe is a highly proven multi-trait exceptional sire, offering calving ease, growth and end product merit. Daughters are easy calving and fertile with very good udders. Tahoes have been well accepted at our past sales and several good ones are cataloged.

EPDs Acc						Cacass EPDs Acc			
CED	Birth	Wean	Year	Milk	SC	Wt.	Marb.	Ribeye	Fat
+9	+0.2	+79	+134	+28	+1.26	+50	+0.91	+0.74	+0.014
0.93	0.97	0.97	0.95	0.87	0.94	0.77	0.76	0.72	0.75





## SydGen Escalate 9017

Tattoo: 9017 DOB: 1/2/2019 Reg. No. 19494539

SydGen Exceed 3223  
Sire: SydGen Enhance  
SydGen Rita 2618  
Connealy Forward  
Dam: SydGen Royal Queen 3482  
SydGen Royal Queen 4286

S Values	
SM	62
SW	65
SF	114
SG	65
SB	179

Big Dry owned, deceased. Semen available.  
Purchased as the top-selling bull calf at the 2019 Sydenstricker Angus sale. We looked at Escalate while he was nursing his dam and respected her length of body, moderate frame, and udder quality, while he exhibited excellent thickness. Daughters are working well in our environment.

EPDs Acc					Cacass EPDs Acc				
CED	Birth	Wean	Year	Milk	SC	Wt.	Marb.	Ribeye	Fat
+4	+1.7	+67	+124	+31	+0.83	+61	+0.80	+0.93	+0.007
0.41	0.75	0.70	0.45	0.37	0.43	0.47	0.40	0.40	0.37



## Big Dry Logo H8

Tattoo: H8 DOB: 3/11/2020 Reg. No. 19983575

Sitz Tebow 11860  
Sire: SITZ Logo 12964  
SITZ Shauna 3152  
Connealy Cool 39L  
Dam: BDAR Queen Mother 827F  
BDAR Queen Mother 116Y

S Values	
SM	79
SW	61
SF	82
SG	39
SB	121

Big Dry Angus raised and retained  
We retained this Logo son as a pasture sire on our yearling heifers. H8 did a nice job and the heifers we have retained are making very nice cows. Several calving-ease sons are offered in this sale.

EPDs Acc					Cacass EPDs Acc				
CED	Birth	Wean	Year	Milk	SC	Wt.	Marb.	Ribeye	Fat
+9	-0.6	+61	+99	+16	+1.33	+37	+0.47	+0.37	+0.019
0.49	0.67	0.60	0.38	0.33	0.38	0.42	0.36	0.36	0.31



## Big Dry Conception H54

**44** Tattoo: H54 DOB: 4/2/2020 Reg. No. 19981060

S A V Resource 1441  
Sire: BDAR-JDM Conception E40  
OCC Montana Dream 018  
OCC Ultimate Answer 118  
Dam: BDAR-JDM Lucy 16  
BDAR-JDM Lucy 422B

S Values	
SM	52
SW	60
SF	98
SG	23
SB	121

Big Dry Angus raised and retained  
H54 is a son of a past high selling bull that was purchased by Butch Nagel in 2018. H54 has worked well as a pasture sire. Several good sons are offered in this sale.

EPDs Acc					Cacass EPDs Acc				
CED	Birth	Wean	Year	Milk	SC	Wt.	Marb.	Ribeye	Fat
+6	+1.2	+59	+113	+34	+0.12	+52	-0.08	+0.90	-0.039
0.31	0.55	0.48	0.38	0.28	0.44	0.38	0.30	0.31	0.26



## S A V Renew 8132

Tattoo: 8132 DOB: 2/21/2018 Reg. No. 19250927

Rito 707 of Ideal 3407 7075  
Sire: S A V Renown 3439  
S A V Blackcap May 4136  
Connealy Cavalry 1149  
Dam: S A V Blackcap May 4593  
S A V Blackcap May 8051

S Values	
SM	81
SW	64
SF	91
SG	32
SB	123

A.I. Sire, ST Genetics  
We saw Renew the year that we bought Specialist at SAV. I bid a loong ways on Renew and thought I had him, until Auctioneer Joe Goggins stopped and talked about how great this bull was. Long story short, Renew brought more than I could pay. Several beefy sons sell.

EPDs Acc					Cacass EPDs Acc				
CED	Birth	Wean	Year	Milk	SC	Wt.	Marb.	Ribeye	Fat
-5	+4.7	+83	+139	+21	+1.49	+55	+0.13	+0.97	-0.006
0.47	0.86	0.82	0.71	0.47	0.63	0.50	0.44	0.45	0.43



## Connealy Reformer

Tattoo: 0551 DOB: 4/19/2020 Reg. No. 19991422

Connealy Confidence Plus  
Sire: Connealy Reformed  
Ensa of Conanga 610  
Basin Payweight 1682  
Dam: Jaycee of Conanga 6560  
Jaycee of Conanga 4660 096X

S Values	
SM	52
SW	65
SF	116
SG	66
SB	182

A.I. Sire, Alta Genetics **Son sells as Lot # 60**  
Reformer is a past top-selling for Connealy Angus. Used as the sire for Embryo Transplant on our 747E cow. A Sitz Royal daughter who is the dam of a past high-selling bull to Connelly Angus in 2021.

EPDs Acc					Cacass EPDs Acc				
CED	Birth	Wean	Year	Milk	SC	Wt.	Marb.	Ribeye	Fat
+10	+0.5	+72	+139	+27	+0.92	+62	+0.82	+1.08	+0.031
0.52	0.72	0.66	0.52	0.32	0.59	0.45	0.39	0.39	0.38



## S A V Panther 1906

Tattoo: 1906 DOB: 1/3/2021 Reg. No. 20157824

S A V Regard 4863  
Sire: S A V Quarterback 7933  
S A V Blackcap May 3525  
Coleman Charlo 0256  
Dam: S A V Blackcap May 6644  
S A V Blackcap May 4136

S Values	
SM	82
SW	78
SF	67
SG	22
SB	89

A.I. Sire **Son sells as Lot # 51**  
Used as the sire in Embryo Transplant on John's S A V Madame Pride 6212 cow per Kelly Schaff's recommendation. 6212 is a natural daughter of the 3145 cow at SAV. 3145 is the current high revenue cow in the SAV herd and is the dam of Glory Days, the Vermilion sire.

EPDs Acc					Cacass EPDs Acc				
CED	Birth	Wean	Year	Milk	SC	Wt.	Marb.	Ribeye	Fat
+5	+1.7	+80	+137	+30	+1.27	+41	+0.05	+0.69	+0.028
0.37	0.70	0.64	0.53	0.33	0.61	0.45	0.41	0.41	0.39



### BDAR-JDM Enchantress 360L

**1** Tattoo: 360L DOB: 3/8/2023 Reg. No. 20901167

Sitz Profile 1160  
**Sire:** Sitz Intuition  
Sitz Florabelle Fanny 5053  
Sitz Powerball 325G  
**Dam:** BDAR-JDM Enchantress 102J  
Diamond Enchantress B470  
BW Adj WW/Ratio  
85 514 / 96

S Values	
SM	59
SW	48
SF	85
SG	59
SB	144

EPDs Acc					Cacass EPDs Acc				
CED	Birth	Wean	Year	Milk	SC	Wt.	Marb.	Ribeye	Fat
-2	+4.4	+67	+117	+22	+0.82	+40	+0.81	+0.45	+0.006
0.25	0.36	0.30	0.20	0.10	0.05	0.05	0.05	0.05	0.05



### BDAR Blackbird 363L

**4** Tattoo: 363L DOB: 4/5/2023 Reg. No. 20893813

SITZ Logo 12964  
**Sire:** Big Dry Logo H8  
BDAR Queen Mother 827F  
Sitz Resilient 10208  
**Dam:** BDAR Blackbird 104J  
BDAR Blackbird 932G  
BW Adj WW/Ratio  
67 549 / 103

S Values	
SM	74
SW	54
SF	78
SG	
SB	

EPDs Acc					Cacass EPDs Acc				
CED	Birth	Wean	Year	Milk	SC	Wt.	Marb.	Ribeye	Fat
+8	+0.1	+65	+111	+19					
0.25	0.34	0.28	0.13	0.10					



### BDAR Queen Mother 361L

**2** Tattoo: 361L DOB: 3/24/2023 Reg. No. 20893811

SITZ Logo 12964  
**Sire:** Big Dry Logo H8  
BDAR Queen Mother 827F  
SydGen Escalate 9017  
**Dam:** BDAR Queen Mother 157J  
BDAR Queen Mother 637D  
BW Adj WW/Ratio  
65 456 / 85

S Values	
SM	75
SW	49
SF	82
SG	42
SB	125

EPDs Acc					Cacass EPDs Acc				
CED	Birth	Wean	Year	Milk	SC	Wt.	Marb.	Ribeye	Fat
+9	+0.0	+51	+89	+21	+1.77	+40	+0.47	+0.57	+0.017
0.23	0.34	0.28	0.13	0.10	0.05	0.05	0.05	0.05	0.05



### BDAR Queen Mother 364L

**5** Tattoo: 364L DOB: 4/7/2023 Reg. No. 20893814

2XL Bronc 8153  
**Sire:** Diamond Bronc H107  
Diamond Trojan Erica 0824  
Coleman Bravo 6313  
**Dam:** BDAR Queen Mother 016H  
BDAR Queen Mother 015X  
BW Adj WW/Ratio  
72 460 / 82

S Values	
SM	89
SW	58
SF	74
SG	52
SB	127

EPDs Acc					Cacass EPDs Acc				
CED	Birth	Wean	Year	Milk	SC	Wt.	Marb.	Ribeye	Fat
+12	-0.5	+54	+95	+27	+0.87	+39	+0.69	+0.61	+0.038
0.19	0.35	0.29	0.15	0.12	0.05	0.05	0.05	0.05	0.05



### BDAR Queen Mother 362L

**3** Tattoo: 362L DOB: 3/30/2023 Reg. No. 20893812

SITZ Logo 12964  
**Sire:** Big Dry Logo H8  
BDAR Queen Mother 827F  
Big Dry Montana Dew F50  
**Dam:** BDAR Queen Mother 140J  
BDAR Queen Mother 625D  
BW Adj WW/Ratio  
80 499 / 93

S Values	
SM	75
SW	52
SF	87
SG	39
SB	126

EPDs Acc					Cacass EPDs Acc				
CED	Birth	Wean	Year	Milk	SC	Wt.	Marb.	Ribeye	Fat
+1	+2.0	+54	+96	+26	+0.94	+41	+0.47	+0.42	+0.037
0.23	0.34	0.28	0.13	0.10	0.05	0.05	0.05	0.05	0.05







### BDAR Eldorene 365L

**6** Tattoo: 365L DOB: 4/15/2023 Reg. No. 20900709

Sitz Stellar 726D  
**Sire:** Sitz Stellar 7300  
Sitz Blackbird 3136  
Connealy Cool 39L  
**Dam:** BDAR Eldorene 947G  
BDAR Eldorene 419B

BW Adj WW/Ratio  
71 556 / 99

S Values	
SM	68
SW	59
SF	90
SG	41
SB	131

EPDs Acc					Cacass EPDs Acc				
CED	Birth	Wean	Year	Milk	SC	Wt.	Marb.	Ribeye	Fat
+5	+0.4	+63	+109	+25	+0.96	+45	+0.47	+0.67	+0.049
0.17	0.35	0.29	0.16	0.13	0.05	0.05	0.05	0.05	0.05



Lot 5



### BDAR Young Lucy 367L

**8** Tattoo: 367L DOB: 4/20/2023 Reg. No. 20900710

BDAR-JDM Conception E40  
**Sire:** Big Dry Conception H54  
BDAR-JDM Lucy 16  
BDAR Consensus Y011  
**Dam:** BDAR Young Lucy 646D  
BDAR Young Lucy 933W

BW Adj WW/Ratio  
76 625 / 112

S Values	
SM	70
SW	69
SF	80
SG	40
SB	120

EPDs Acc					Cacass EPDs Acc				
CED	Birth	Wean	Year	Milk	SC	Wt.	Marb.	Ribeye	Fat
+7	+1.0	+61	+101	+34	+0.47	+41	+0.38	+0.65	-0.003
0.05	0.27	0.24	0.05	0.18	0.05	0.05	0.05	0.05	0.05

Dam Production: 5 BR 100,5 WR 100, 1 YR 87



### BDAR Black Meg 368L

**9** Tattoo: 368L DOB: 4/28/2023 Reg. No. 20900711

Sitz Stellar 726D  
**Sire:** Sitz Stellar 7300  
Sitz Blackbird 3136  
S A V Rainfall 6846  
**Dam:** BDAR Black Meg 967G  
BDAR Black Meg 013X

BW Adj WW/Ratio  
76 568 / 102

S Values	
SM	69
SW	53
SF	78
SG	50
SB	128

EPDs Acc					Cacass EPDs Acc				
CED	Birth	Wean	Year	Milk	SC	Wt.	Marb.	Ribeye	Fat
+5	+0.9	+55	+99	+26	+0.90	+28	+0.70	+0.49	+0.059
0.17	0.34	0.28	0.16	0.13	0.05	0.05	0.05	0.05	0.05



### BDAR-JDM Montana Dream 366L

**7** Tattoo: 366L DOB: 4/18/2023 Reg. No. 20901700

BDAR-JDM Conception E40  
**Sire:** Big Dry Conception H54  
BDAR-JDM Lucy 16  
Connealy Capitalist 028  
**Dam:** BDAR Montana Dream 540C  
OCC Montana Dream 018

BW Adj WW/Ratio  
76 489 / 87

S Values	
SM	60
SW	53
SF	87
SG	26
SB	113

EPDs Acc					Cacass EPDs Acc				
CED	Birth	Wean	Year	Milk	SC	Wt.	Marb.	Ribeye	Fat
+11	-0.1	+51	+102	+30	+0.66	+39	+0.05	+0.73	-0.019
0.05	0.28	0.24	0.05	0.19	0.05	0.05	0.05	0.05	0.05

Dam Production: 6 BR 100,6 WR 95, 2 YR 94



### BDAR-BFM Queen Mother 369L

**10** Tattoo: 369L DOB: 5/1/2023 Reg. No. 20893815

2XL Bronc 8153  
**Sire:** Diamond Bronc H107  
Diamond Trojan Erica 0824  
Connealy Cool 39L  
**Dam:** BDAR Queen Mother 702E  
BDAR Queen Mother 924W

BW Adj WW/Ratio  
77 516 / 93

S Values	
SM	71
SW	69
SF	106
SG	71
SB	177

EPDs Acc					Cacass EPDs Acc				
CED	Birth	Wean	Year	Milk	SC	Wt.	Marb.	Ribeye	Fat
+6	+1.2	+71	+123	+25	+1.13	+62	+1.01	+0.78	+0.039
0.05	0.34	0.31	0.05	0.19	0.05	0.05	0.05	0.05	0.05

Dam Production: 5 BR 100,5 WR 93, 1 YR 103

The summer of 2023 began very good with timely rains until early June, then, unfortunately Mother Nature turned off the spigot. Grasshoppers, an influx of flies, and low-quality grass impacted our calf weights, just as many of you experienced. As a result, our calves came in lighter than normal.

The calves have done well post-weaning, growing where the “hills are real, not piles of pushed up manure,” and they, like us are looking forward to green grass.



### Big Dry Intuition L3

**13**

Tattoo: L3

DOB: 3/12/2023

Reg. No. 20893731

Sitz Profile 1160  
**Sire:** Sitz Intuition  
 Sitz Florabelle Fanny 5053  
 S A V Specialist 8896  
**Dam:** BDAR Queen Mother 111J  
 BDAR Queen Mother 719E

BW 67 Adj WW/Ratio 571 / 99 Adj YW/Ratio SC

S Values	
SM	71
SW	61
SF	82
SG	45
SB	127

Born unaassisted from a 1st calf heifer.  
 Heifer friendly from the same cowline as the easy  
 fleshing donor Queen Mother 243z.

EPDs Acc						Cacass EPDs Acc			
CED	Birth	Wean	Year	Milk	SC	Wt.	Marb.	Ribeye	Fat
+ 10	-1.1	+64	+114	+25	1+1.13	1+38	1+0.52	1+0.52	1+0.002
0.25	0.36	0.30	0.20	0.10	0.05	0.05	0.05	0.05	0.05



### Big Dry Blueprint L1

**11**

Tattoo: L1

DOB: 3/4/2023

Reg. No. 20902213

KM Broken Bow 002  
**Sire:** SydGen Blueprint  
 Sitz Florabelle Fanny 4735

S A V Rainfall 6846  
**Dam:** BDAR-BFM Queen Mother 118J  
 BDAR Queen Mother BFM 233Z

BW 62 Adj WW/Ratio 523 / 92 Adj YW/Ratio SC

S Values	
SM	83
SW	60
SF	90
SG	62
SB	152

Born unaassisted from a 1st calf heifer.  
 Heifer friendly with high marbling.

EPDs Acc						Cacass EPDs Acc			
CED	Birth	Wean	Year	Milk	SC	Wt.	Marb.	Ribeye	Fat
+ 10	-1.0	+58	+104	+29	1+1.07	1+46	1+0.94	1+0.37	1+0.039
0.26	0.36	0.30	0.21	0.17	0.05	0.05	0.05	0.05	0.05

As of catalog printing time, we have not fertility-tested the bulls. We are scheduled to, after the catalog goes to print.

As a result, we do not have Scrotal Measurements yet, nor have we taken yearling weights.

All measurements and weights, as well as updated EPD's will be available by calling, texting or emailing. We will also have a few (we hope) bulls not pass the fertility test that will be pulled from the sale, so be sure to check at sale time for updated information.

Thanks, we look forward to seeing everyone.



### Big Dry Blueprint L2

**12**

Tattoo: L2

DOB: 3/11/2023

Reg. No. 20902262

KM Broken Bow 002  
**Sire:** SydGen Blueprint  
 Sitz Florabelle Fanny 4735

S Jump Start 923  
**Dam:** BDAR Lass 147J  
 BDAR Lass 923W

BW 73 Adj WW/Ratio 603 / 106 Adj YW/Ratio SC

S Values	
SM	74
SW	60
SF	91
SG	59
SB	149

Born unaassisted from a 1st calf heifer.  
 A long sided, big WW, heifer friendly Blueprint son, out of a good cowline.

EPDs Acc						Cacass EPDs Acc			
CED	Birth	Wean	Year	Milk	SC	Wt.	Marb.	Ribeye	Fat
+ 6	+1.3	+68	+119	+23	1+0.21	1+41	1+0.89	1+0.34	1+0.044
0.26	0.36	0.30	0.20	0.15	0.05	0.05	0.05	0.05	0.05



### Big Dry Intuition L4

**14**

Tattoo: L4

DOB: 3/12/2023

Reg. No. 20901170

Sitz Profile 1160  
**Sire:** Sitz Intuition  
 Sitz Florabelle Fanny 5053  
 Sitz Resilient 10208  
**Dam:** BDAR Queen Mother 119J  
 BDAR Queen Mother 850F

BW 81 Adj WW/Ratio 576 / 100 Adj YW/Ratio SC

S Values	
SM	68
SW	58
SF	82
SG	75
SB	157

Born unaassisted from a 1st calf heifer.  
 A high marbling Intuition son with added stretch.

EPDs Acc						Cacass EPDs Acc			
CED	Birth	Wean	Year	Milk	SC	Wt.	Marb.	Ribeye	Fat
+ 4	+2.7	+66	+117	+28	1+1.04	1+39	1+1.08	1+0.51	1-0.009
0.27	0.36	0.31	0.21	0.11	0.05	0.05	0.05	0.05	0.05



### Big Dry Blueprint L6

**15** Tattoo: L6 DOB: 3/14/2023 Reg. No. 20902211

Sire: KM Broken Bow 002  
SydGen Blueprint  
Sitz Florabelle Fanny 4735

Dam: S Jump Start 923  
BDAR-JDM Black Meg 121J  
BDAR Black Meg 935W

BW 79 Adj WW/Ratio 565 / 99 Adj YW/Ratio SC

S Values	
SM	74
SW	56
SF	90
SG	56
SB	146

Born unaassisted from a 1st calf heifer.  
A very docile Blueprint x Jump Start son that will make very nice replacement heifers.

EPDs Acc					Cacass EPDs Acc				
CED	Birth	Wean	Year	Milk	SC	Wt.	Marb.	Ribeye	Fat
+4	+1.9	+60	+106	+28	I+0.35	I+42	I+0.86	I+0.31	I+0.052
0.26	0.36	0.30	0.20	0.15	0.05	0.05	0.05	0.05	0.05



### Big Dry Jump Start L9

**18** Tattoo: L9 DOB: 3/19/2023 Reg. No. 20893774

Sire: S Powerpoint WS 5503  
S Jump Start 923  
S Gloria 0406

Dam: SydGen Escalate 9017  
BDAR Lass 164J  
BDAR Lass 624D

BW 58 Adj WW/Ratio 557 / 97 Adj YW/Ratio SC

S Values	
SM	62
SW	59
SF	93
SG	59
SB	152

Born unaassisted from a 1st calf heifer.  
Grandam is a really good Cool daughter.

EPDs Acc					Cacass EPDs Acc				
CED	Birth	Wean	Year	Milk	SC	Wt.	Marb.	Ribeye	Fat
I+8	I+0.0	I+68	I+126	I+23	I+1.13	I+52	I+0.86	I+0.66	I+0.067
0.05	0.34	0.31	0.05	0.18	0.05	0.05	0.05	0.05	0.05



### Big Dry Intuition L7

**16** Tattoo: L7 DOB: 3/14/2023 Reg. No. 20901173

Sire: Sitz Profile 1160  
Sitz Intuition  
Sitz Florabelle Fanny 5053

Dam: Sitz Resilient 10208  
BDAR Lucy 169J  
BDAR Lucy 950G

BW 63 Adj WW/Ratio 640 / 111 Adj YW/Ratio SC

S Values	
SM	73
SW	69
SF	82
SG	74
SB	156

Born unaassisted from a 1st calf heifer.  
A thick made, heifer friendly Intuition son with a great weaning ratio.

EPDs Acc					Cacass EPDs Acc				
CED	Birth	Wean	Year	Milk	SC	Wt.	Marb.	Ribeye	Fat
+10	-0.5	+68	+117	+30	I+0.85	I+37	I+1.08	I+0.53	I+0.004
0.28	0.36	0.31	0.21	0.11	0.05	0.05	0.05	0.05	0.05



### Big Dry-BFM Tahoe L11

**19** Tattoo: L11 DOB: 3/24/2023 Reg. No. 20912534

Sire: Tehama Upward Y238  
Tehama Tahoe B767  
Tehama Mary Blackbird Y684

Dam: S A V Pioneer 7301  
JLF Reba 1212  
Greens Reba 5837

BW 85 Adj WW/Ratio 647 / 107 Adj YW/Ratio SC

S Values	
SM	66
SW	65
SF	87
SG	49
SB	136

Heifer potential.  
E.T. bull out of the 13 year old Reba 1212. She was purchase from J&L Farms at the NILE Stock Show.  
Reba 1212 is an easy fleshing, lengthy, feminine cow with a great udder.

EPDs Acc					Cacass EPDs Acc				
CED	Birth	Wean	Year	Milk	SC	Wt.	Marb.	Ribeye	Fat
I+8	+0.9	+70	+121	+26	I+1.14	I+43	I+0.62	I+0.56	I+0.022
0.05	0.36	0.32	0.23	0.24	0.05	0.05	0.05	0.05	0.05

Dam Production: 10 BR 100,10 WR 100, 4 YR 101



### Big Dry Blueprint L8

**17** Tattoo: L8 DOB: 3/19/2023 Reg. No. 20902235

Sire: KM Broken Bow 002  
SydGen Blueprint  
Sitz Florabelle Fanny 4735

Dam: S A V Rainfall 6846  
BDAR Queem Mother 146J  
BDAR Queem Mother 852F

BW 73 Adj WW/Ratio 591 / 102 Adj YW/Ratio SC

S Values	
SM	80
SW	62
SF	87
SG	55
SB	142

Born unaassisted from a 1st calf heifer.  
A heifer safe, high heifer pregnancy Blueprint son.

EPDs Acc					Cacass EPDs Acc				
CED	Birth	Wean	Year	Milk	SC	Wt.	Marb.	Ribeye	Fat
+8	+1.1	+62	+113	+33	I+0.57	I+43	I+0.70	I+0.60	I+0.007
0.27	0.36	0.30	0.21	0.16	0.05	0.05	0.05	0.05	0.05



Lot 17



### Big Dry Savvy L12

**20** Tattoo: L12 DOB: 3/24/2023 Reg. No. 20893715

Sitz Stellar 726D  
Sire: SITZ Savvy 732H  
SITZ Lady 357F

Sitz JLS Game Day 9630  
Dam: Vermilion Edwina 7078  
Vermilion Edwina 5297

BW Adj WW/Ratio Adj YW/Ratio SC  
84 640 / 105

S Values	
SM	80
SW	68
SF	87
SG	41
SB	128

E.T. bull out the famous Vermilion Edwina 7078, dam of Vermilion Bomber G017. She is described as "One of the most prolific cows on the Vermilion Ranch." Full brother to lot 25

EPDs Acc					Cacass EPDs Acc				
CED	Birth	Wean	Year	Milk	SC	Wt.	Marb.	Ribeye	Fat
I+4	+2.0	+78	+123	+21	I+0.50	I+49	I+0.49	I+0.58	I+0.049
0.05	0.36	0.32	0.25	0.13	0.05	0.05	0.05	0.05	0.05



### Big Dry McLintock L13

**21** Tattoo: L13 DOB: 3/24/2023 Reg. No. 20893716

S Thrive JAS 5515  
Sire: S McLintock 9702  
S Bessie 5544

SydGen Black Velvet 4423  
Dam: BDAR Eldorene 738E  
BDAR Eldorene 158Y

BW Adj WW/Ratio Adj YW/Ratio SC  
90 630 / 105

S Values	
SM	58
SW	56
SF	111
SG	36
SB	147

Good Cow Bull.  
Added frame and nice EPD spread.

EPDs Acc					Cacass EPDs Acc				
CED	Birth	Wean	Year	Milk	SC	Wt.	Marb.	Ribeye	Fat
+4	+2.6	+76	+145	+23	I+1.23	I+61	I+0.38	I+0.56	I+0.037
0.17	0.36	0.30	0.18	0.12	0.05	0.05	0.05	0.05	0.05

Dam Production: 5 BR 106,5 WR 102, 1 YR 105



### Big Dry-JDM Blueprint L15

**23** Tattoo: L15 DOB: 3/26/2023 Reg. No. 20902275

KM Broken Bow 002  
Sire: SydGen Blueprint  
Sitz Florabelle Fanny 4735

Sitz Conformation 689A  
Dam: BDAR Zara 710E  
BDAR Zara 551C

BW Adj WW/Ratio Adj YW/Ratio SC  
76 575 / 108

S Values	
SM	91
SW	70
SF	89
SG	62
SB	150

A thick-made, big hipped, moderate framed Blueprint son.  
Good bull.

EPDs Acc					Cacass EPDs Acc				
CED	Birth	Wean	Year	Milk	SC	Wt.	Marb.	Ribeye	Fat
+6	+0.6	+70	+118	+29	I+0.85	I+45	I+0.96	I+0.38	I+0.055
0.24	0.36	0.30	0.21	0.18	0.05	0.05	0.05	0.05	0.05

Dam Production: 4 BR 98,4 WR 99, 1 YR 94



### Big Dry Stellar L14

**22** Tattoo: L14 DOB: 3/25/2023 Reg. No. 20893717

Sitz Stellar 726D  
Sire: Sitz Stellar 7300  
Sitz Blackbird 3136

S Foundation 514  
Dam: BDAR Royal Queen 901G  
BDAR Royal Queen 626D

BW Adj WW/Ratio Adj YW/Ratio SC  
72 494 / 82

S Values	
SM	70
SW	50
SF	78
SG	44
SB	122

Heifer potential.

EPDs Acc					Cacass EPDs Acc				
CED	Birth	Wean	Year	Milk	SC	Wt.	Marb.	Ribeye	Fat
+10	-1.6	+50	+94	+26	I+1.31	I+38	I+0.53	I+0.63	I+0.041
0.18	0.35	0.29	0.16	0.12	0.05	0.05	0.05	0.05	0.05



### Big Dry Bronc L16

**24** Tattoo: L16 DOB: 3/28/2023 Reg. No. 20893718

2XL Bronc 8153  
Sire: Diamond Bronc H107  
Diamond Trojan Erica 0824

Coleman Bravo 6313  
Dam: BDAR Queen Mother 019H  
BDAR Queen Mother 614D

BW Adj WW/Ratio Adj YW/Ratio SC  
85 631 / 105

S Values	
SM	98
SW	71
SF	80
SG	59
SB	139

A moderate framed Bronc H107 son out of a really nice Bravo daughter. Lot 24 should make some really nice daughters.

EPDs Acc					Cacass EPDs Acc				
CED	Birth	Wean	Year	Milk	SC	Wt.	Marb.	Ribeye	Fat
+8	+1.9	+75	+127	+26	I+1.01	I+44	I+0.84	I+0.54	I+0.045
0.19	0.35	0.29	0.14	0.11	0.05	0.05	0.05	0.05	0.05



### Big Dry Savvy L18

**25** Tattoo: L18 DOB: 3/28/2023 Reg. No. 20893720

Sitz Stellar 726D  
Sire: SITZ Savvy 732H  
SITZ Lady 357F

Sitz JLS Game Day 9630  
Dam: Vermilion Edwina 7078  
Vermilion Edwina 5297

BW 80 Adj WW/Ratio 648 / 107 Adj YW/Ratio SC

S Values	
SM	79
SW	69
SF	87
SG	41
SB	128

E.T bull out of Vermilion Edwina 7078. This bull has extra frame and high WW and YW EPDs. His flush sister is really good; deep, wide topped and has a friendly disposition. Full brother to lot 20.

EPDs Acc					Cacass EPDs Acc				
CED	Birth	Wean	Year	Milk	SC	Wt.	Marb.	Ribeye	Fat
I+4	+1.0	+77	+122	+21	I+0.50	I+49	I+0.49	I+0.58	I+0.049
0.05	0.36	0.32	0.25	0.13	0.05	0.05	0.05	0.05	0.05



### Big Dry McLintock L19

**26** Tattoo: L19 DOB: 3/28/2023 Reg. No. 20893721

S Thrive JAS 5515  
Sire: S McLintock 9702  
S Bessie 5544

SydGen Forward 9130  
Dam: BDAR Queen Mother 243Z  
BDAR Queen Mother 908T

BW Adj WW/Ratio 599 / 99 Adj YW/Ratio SC

S Values	
SM	51
SW	54
SF	113
SG	46
SB	159

A wide topped E.T. bull out of the easy fleshing donor Queen Mother 243Z. 243Z is set to calve on the Big Dry at 12 years of age. Cow-Maker bull.

EPDs Acc					Cacass EPDs Acc				
CED	Birth	Wean	Year	Milk	SC	Wt.	Marb.	Ribeye	Fat
I+8	+1.9	+70	+133	+23	I+0.99	I+60	I+0.52	I+0.64	I+0.013
0.05	0.24	0.30	0.18	0.13	0.05	0.05	0.05	0.05	0.05

Dam Production: 8 BR 100,8 WR 105, 1 YR 92



### Big Dry-JDM Tahoe L20

**27** Tattoo: L20 DOB: 3/29/2023 Reg. No. 20893722

Tehama Upward Y238  
Sire: Tehama Tahoe B767  
Tehama Mary Blackbird Y684

Lafins Cutting Edge 2075  
Dam: OCC Montana Dream 018  
OCC Montana Dream 802

BW 80 Adj WW/Ratio 563 / 106 Adj YW/Ratio SC

S Values	
SM	57
SW	60
SF	82
SG	48
SB	129

Heifer potential.  
Dam is the mother of Conception E40. Lots of longevity in this cowline.

EPDs Acc					Cacass EPDs Acc				
CED	Birth	Wean	Year	Milk	SC	Wt.	Marb.	Ribeye	Fat
+11	-0.7	+56	+98	+32	I+1.16	I+36	I+0.60	I+0.45	I+0.013
0.25	0.38	0.32	0.24	0.25	0.05	0.05	0.05	0.05	0.05

Dam Production: 12 BR 99,12 WR 108, 6 YR 108

### E.T. Bulls Selling

You will note that there a few embryo transplant bulls selling in the sale. We made the decision to “flush” of our best **PROVEN** cows to add more of their daughters back into our herd.

Initially, we flushed cows that were 9 or 10 years old, that had weaned calves every year with elite average nursing ratios. We are calving these ET produced daughters this spring as 2-year-olds, and the results are gratifying.

In this sale, some of those same mating’s sell. In addition, I purchased 4 embryos at the Inaugural Vermilion Ranch Embryo Sale. Those bulls sell as Lots 20 and 25.

We continue to flush a few proven cows annually with all ET calves born out of our homegrown recipient cows.

We feel these matings can be advantageous to you as sires for building a cowherd with fertility, performance, and longevity.



### Big Dry Bronc L21

**28** Tattoo: L21 DOB: 3/29/2023 Reg. No. 20893723

2XL Bronc 8153  
Sire: Diamond Bronc H107  
Diamond Trojan Erica 0824

Coleman Bravo 6313  
Dam: BDAR Queen Mother 006H  
BDAR Queen Mother 833F

BW 70 Adj WW/Ratio 578 / 96 Adj YW/Ratio SC

S Values	
SM	96
SW	68
SF	72
SG	59
SB	131

Heifer potential.  
A thick, wide topped, moderate framed Bronc son.

EPDs Acc					Cacass EPDs Acc				
CED	Birth	Wean	Year	Milk	SC	Wt.	Marb.	Ribeye	Fat
+15	-1.5	+63	+108	+28	I+1.12	I+42	I+0.78	I+0.75	I+0.032
0.20	0.35	0.29	0.14	0.12	0.05	0.05	0.05	0.05	0.05





## Big Dry Bronc L24

**31**

Tattoo: L24

DOB: 3/30/2023

Reg. No. 20893726

2XL Bronc 8153  
**Sire:** Diamond Bronc H107  
 Diamond Trojan Erica 0824

Connealy Cool 39L  
**Dam:** BDAR Charmer 069H  
 BDAR Charmer 349A

BW 68 Adj WW/Ratio 534 / 89 Adj YW/Ratio SC

S Values	
SM	75
SW	63
SF	97
SG	69
SB	166

Heifer potential.  
 A nice Bronc son with good Marbling and Ribeye projections.

EPDs Acc						Cacass EPDs Acc			
CED	Birth	Wean	Year	Milk	SC	Wt.	Marb.	Ribeye	Fat
+13	-1.3	+64	+114	+26	1+1.24	1+58	1+0.95	1+0.82	1+0.037
0.19	0.35	0.29	0.14	0.12	0.05	0.05	0.05	0.05	0.05



## Big Dry McLintock L22

**29**

Tattoo: L22

DOB: 3/29/2023

Reg. No. 20893724

S Thrive JAS 5515  
**Sire:** S McLintock 9702  
 S Bessie 5544

BDAR Consensus Y011  
**Dam:** BDAR Queen Mother 568C  
 BDAR Queen Mother 029X

BW 85 Adj WW/Ratio 591 / 99 Adj YW/Ratio SC

S Values	
SM	56
SW	50
SF	107
SG	40
SB	148

Deep sided McLintock son with extra frame and muscle.  
 Good bull

EPDs Acc						Cacass EPDs Acc			
CED	Birth	Wean	Year	Milk	SC	Wt.	Marb.	Ribeye	Fat
+3	+2.8	+73	+131	+16	1+0.77	1+55	1+0.39	1+0.74	1+0.022
0.17	0.36	0.31	0.18	0.13	0.05	0.05	0.05	0.05	0.05



## Big Dry McLintock L25

**32**

Tattoo: L25

DOB: 3/30/2023

Reg. No. 20893727

S Thrive JAS 5515  
**Sire:** S McLintock 9702  
 S Bessie 5544

Connealy Capitalist 028  
**Dam:** BDAR Queen Mother 557C  
 BDAR Queen Mother 812U

BW 82 Adj WW/Ratio 593 / 99 Adj YW/Ratio SC

S Values	
SM	53
SW	50
SF	101
SG	49
SB	150

Herd Bull. Dam is a good 9 year old Capitalist daughter set to calve this spring on the Big Dry. A big hipped, wide topped bull that is easy on the eyes.

EPDs Acc						Cacass EPDs Acc			
CED	Birth	Wean	Year	Milk	SC	Wt.	Marb.	Ribeye	Fat
+8	+1.3	+67	+124	+17	1+0.96	1+47	1+0.56	1+0.71	1+0.018
0.18	0.36	0.31	0.19	0.14	0.05	0.05	0.05	0.05	0.05

Dam Production: 7 BR 100,7 WR 98, 2 YR 102



## Big Dry Bronc L23

**30**

Tattoo: L23

DOB: 3/30/2023

Reg. No. 20893725

2XL Bronc 8153  
**Sire:** Diamond Bronc H107  
 Diamond Trojan Erica 0824

S A V Specialist 8896  
**Dam:** BDAR Queen Mother 065H  
 BDAR Queen Mother 537C

BW 74 Adj WW/Ratio 670 / 112 Adj YW/Ratio SC

S Values	
SM	75
SW	73
SF	84
SG	52
SB	136

Really nice Bronc son with a big WW ratio and is potentially heifer friendly. Strong cow family, keep the daughters of this bull for replacements.

EPDs Acc						Cacass EPDs Acc			
CED	Birth	Wean	Year	Milk	SC	Wt.	Marb.	Ribeye	Fat
+9	-0.2	+76	+129	+26	1+0.86	1+47	1+0.71	1+0.48	1+0.029
0.18	0.35	0.29	0.13	0.11	0.05	0.05	0.05	0.05	0.05



## Big Dry Tahoe L26

**33**

Tattoo: L26

DOB: 3/30/2023

Reg. No. 20905756

Tehama Upward Y238  
**Sire:** Tehama Tahoe B767  
 Tehama Mary Blackbird Y684

S Foundation 514  
**Dam:** BDAR Tulloch Duch 814F  
 BDAR Tulloch Duch 601D

BW 88 Adj WW/Ratio 567 / 95 Adj YW/Ratio SC

S Values	
SM	85
SW	61
SF	70
SG	58
SB	128

Recommended for cows. A Tahoe son that carries lots of middle.

EPDs Acc						Cacass EPDs Acc			
CED	Birth	Wean	Year	Milk	SC	Wt.	Marb.	Ribeye	Fat
+5	+1.6	+65	+112	+26	1+1.05	1+33	1+0.72	1+0.61	1-0.006
0.25	0.37	0.32	0.22	0.21	0.05	0.05	0.05	0.05	0.05



### Big Dry Bronc L27

**34** Tattoo: L27 DOB: 3/31/2023 Reg. No. 20893728

2XL Bronc 8153  
**Sire:** Diamond Bronc H107  
Diamond Trojan Erica 0824  
Tehama Tahoe B767  
**Dam:** BDAR Queen Mother 004H  
BDAR Queen Mother 849F

S Values	
SM	79
SW	65
SF	93
SG	58
SB	151

BW Adj WW/Ratio Adj YW/Ratio SC  
82 586 / 98

Heifer potential.  
Dam is a very nice moderate framed Tahoe daughter.

EPDs Acc					Cacass EPDs Acc				
CED	Birth	Wean	Year	Milk	SC	Wt.	Marb.	Ribeye	Fat
+12	-0.8	+64	+114	+27	1+1.13	1+49	1+0.83	1+0.68	1+0.065
0.20	0.35	0.29	0.14	0.11	0.05	0.05	0.05	0.05	0.05



### Big Dry Renew L31

**37** Tattoo: L31 DOB: 3/31/2023 Reg. No. 20901166

S A V Renown 3439  
**Sire:** S A V Renew 8132  
S A V Blackcap May 4593  
Connealy Consensus 7229  
**Dam:** BDAR Lass 266Z  
B D A R Marv Lass 2991

S Values	
SM	71
SW	54
SF	64
SG	40
SB	104

BW Adj WW/Ratio Adj YW/Ratio SC  
85 627 / 105

The donor, BDAR Lass 266Z natural calf. A stout, big  
hipped Renew son. Maternal brother to lot 64.  
Good Bull

EPDs Acc					Cacass EPDs Acc				
CED	Birth	Wean	Year	Milk	SC	Wt.	Marb.	Ribeye	Fat
+1	+2.8	+58	+97	+27	1+0.94	1+24	1+0.34	1+0.63	1-0.022
0.20	0.38	0.33	0.23	0.19	0.05	0.05	0.05	0.05	0.05

Dam Production: 10 BR 99,10 WR 105, 4 YR 101



### Big Dry Bronc L29

**35** Tattoo: L29 DOB: 3/31/2023 Reg. No. 20893730

2XL Bronc 8153  
**Sire:** Diamond Bronc H107  
Diamond Trojan Erica 0824  
Bruin Torque 5261  
**Dam:** BDAR Tulloch Duch 060H  
BDAR Tulloch Duch 601D

S Values	
SM	72
SW	66
SF	88
SG	54
SB	142

BW Adj WW/Ratio Adj YW/Ratio SC  
74 607 / 101

Heifer potential.  
A nice thick made Bronc son.

EPDs Acc					Cacass EPDs Acc				
CED	Birth	Wean	Year	Milk	SC	Wt.	Marb.	Ribeye	Fat
+11	-0.8	+68	+123	+27	1+0.43	1+45	1+0.68	1+0.68	1+0.024
0.18	0.35	0.29	0.14	0.12	0.05	0.05	0.05	0.05	0.05



### Big Dry McLintock L32

**38** Tattoo: L32 DOB: 3/31/2023 Reg. No. 20893733

S Thrive JAS 5515  
**Sire:** S McLintock 9702  
S Bessie 5544  
BDAR Appolo C3  
**Dam:** BDAR Queen Mother 714E  
BDAR Queen Mother 566C

S Values	
SM	59
SW	52
SF	107
SG	42
SB	149

BW Adj WW/Ratio Adj YW/Ratio SC  
84 585 / 98

Good, long, smooth made McLintock son. Heifer  
potential  
Good bull

EPDs Acc					Cacass EPDs Acc				
CED	Birth	Wean	Year	Milk	SC	Wt.	Marb.	Ribeye	Fat
+7	+1.9	+71	+135	+20	1+0.75	1+59	1+0.45	1+0.69	1+0.028
0.18	0.36	0.30	0.18	0.12	0.05	0.05	0.05	0.05	0.05

Dam Production: 5 BR 102,5 WR 101, 1 YR 106



### Big Dry Logo L30

**36** Tattoo: L30 DOB: 3/31/2023 Reg. No. 20893732

SITZ Logo 12964  
**Sire:** Big Dry Logo H8  
BDAR Queen Mother 827F  
S Jump Start 923  
**Dam:** BDAR Eldorene 170J  
BDAR Eldorene 957G

S Values	
SM	82
SW	64
SF	84
SG	43
SB	127

BW Adj WW/Ratio Adj YW/Ratio SC  
74 643 / 111

Born unaasisted from a 1st calf heifer.  
Good weaning ratio. H8 x Jumpstart will produce easy  
keeping heifers with good maternal traits.

EPDs Acc					Cacass EPDs Acc				
CED	Birth	Wean	Year	Milk	SC	Wt.	Marb.	Ribeye	Fat
+6	+1.6	+74	+123	+18	1+1.34	1+41	1+0.52	1+0.55	1+0.042
0.25	0.34	0.28	0.13	0.09	0.05	0.05	0.05	0.05	0.05



### Big Dry McLintock L33

**39** Tattoo: L33 DOB: 3/31/2023 Reg. No. 20893734

S Thrive JAS 5515  
**Sire:** S McLintock 9702  
S Bessie 5544  
Sitz Investmen 294B  
**Dam:** BDAR Blackcap 880F  
BDAR Blackcap 225Z

S Values	
SM	66
SW	46
SF	96
SG	33
SB	129

BW Adj WW/Ratio Adj YW/Ratio SC  
94 600 / 100

Extra length and a good cow family back this McLintock  
son.

EPDs Acc					Cacass EPDs Acc				
CED	Birth	Wean	Year	Milk	SC	Wt.	Marb.	Ribeye	Fat
+3	+3.4	+66	+125	+20	1+0.86	1+46	1+0.42	1+0.37	1+0.067
0.17	0.36	0.30	0.18	0.12	0.05	0.05	0.05	0.05	0.05

Dam Production: 4 BR 100,4 WR 101, 1 YR 90



### Big Dry-JDM Intuition L35

**40** Tattoo: L35 DOB: 4/1/2023 Reg. No. 20901193

Sitz Profile 1160  
Sire: Sitz Intuition  
Sitz Florabelle Fanny 5053

Sitz Conformation 689A  
Dam: BDAR-JDM Kate 17  
BDAR Kate 536C

BW Adj WW/Ratio Adj YW/Ratio SC  
88 698 / 117

S Values	
SM	51
SW	71
SF	93
SG	58
SB	150

Extra frame and high weaning ratio.

EPDs Acc					Cacass EPDs Acc				
CED	Birth	Wean	Year	Milk	SC	Wt.	Marb.	Ribeye	Fat
+4	+0.4	+70	+118	+32	I+1.18	I+43	I+0.82	I+0.50	I+0.035
0.24	0.36	0.31	0.21	0.13	0.05	0.05	0.05	0.05	0.05

Dam Production: 5 BR 109,5 WR 109, 1 YR 97



### Big Dry Renew

**41** Tattoo: L36 DOB: 4/1/2023 Reg. No. 20901164

S A V Renown 3439  
Sire: S A V Renew 8132  
S A V Blackcap May 4593

S A V Mustang 9134  
Dam: BDAR Pride 227Z  
Vermilion Pride 7050

BW Adj WW/Ratio Adj YW/Ratio SC  
92 614 / 103

S Values	
SM	72
SW	53
SF	87
SG	27
SB	114

BDAR Pride 227z natural calf. A heavy muscled, long sided Renew son. 227z is a feminine, deep sided cow that has left lots of productive daughters in our herd. Maternal brother to lot 61.

EPDs Acc					Cacass EPDs Acc				
CED	Birth	Wean	Year	Milk	SC	Wt.	Marb.	Ribeye	Fat
-1	+4.1	+64	+112	+29	I+1.05	I+40	I+0.17	I+0.61	I+0.020
0.20	0.37	0.33	0.23	0.19	0.05	0.05	0.05	0.05	0.05

Dam Production: 10 BR 103,10 WR 105, 3 YR 104



### Big Dry Specialist L37

**42** Tattoo: L37 DOB: 4/1/2023 Reg. No. 20893735

S A V Sensation 5615  
Sire: S A V Specialist 8896  
S A V Madame Pride 3304

Vermilion Franklin X390  
Dam: BDAR Ruby 554C  
BDAR Ruby 019X

BW Adj WW/Ratio Adj YW/Ratio SC  
82 658 / 110

S Values	
SM	67
SW	57
SF	91
SG	31
SB	122

A standout Specialist son with loads of thickness. He's from the same cowline that produced Montana Dew F50 and is maternal brother to Precipitation G38 who sold to 9 Peaks Ranch in Fort Rock, OR.

EPDs Acc					Cacass EPDs Acc				
CED	Birth	Wean	Year	Milk	SC	Wt.	Marb.	Ribeye	Fat
+6	+1.2	+65	+114	+23	I+0.81	I+40	I+0.27	I+0.53	I+0.019
0.17	0.36	0.31	0.18	0.16	0.05	0.05	0.05	0.05	0.05

Dam Production: 6 BR 101,6 WR 101, 2 YR 106



### Big Dry Stellar L39

**43** Tattoo: L39 DOB: 4/1/2023 Reg. No. 20900699

Sitz Stellar 726D  
Sire: Sitz Stellar 7300  
Sitz Blackbird 3136

SydGen CC Rider 3582  
Dam: BDAR Zara 952G  
BDAR Zara 202Z

BW Adj WW/Ratio Adj YW/Ratio SC  
81 566 / 94

S Values	
SM	74
SW	59
SF	78
SG	53
SB	131

Good Marbling on this Stellar son. Dam is a moderate framed cow from a good cow family.

EPDs Acc					Cacass EPDs Acc				
CED	Birth	Wean	Year	Milk	SC	Wt.	Marb.	Ribeye	Fat
+5	+1.5	+61	+106	+28	I+0.68	I+38	I+0.74	I+0.55	I+0.054
0.17	0.35	0.29	0.15	0.12	0.05	0.05	0.05	0.05	0.05



### Big Dry Bronc L40

**44** Tattoo: L40 DOB: 4/2/2023 Reg. No. 20893736

2XL Bronc 8153  
Sire: Diamond Bronc H107  
Diamond Trojan Erica 0824

SydGen Black Velvet 4423  
Dam: BDAR Miss 063H  
BDAR Miss 340A

BW Adj WW/Ratio Adj YW/Ratio SC  
79 590 / 98

S Values	
SM	64
SW	61
SF	83
SG	66
SB	149

Heifer friendly.  
A nice stout Bronc son.

EPDs Acc					Cacass EPDs Acc				
CED	Birth	Wean	Year	Milk	SC	Wt.	Marb.	Ribeye	Fat
+9	-0.2	+61	+115	+31	I+0.81	I+45	I+0.88	I+0.74	I+0.016
0.18	0.35	0.29	0.14	0.10	0.05	0.05	0.05	0.05	0.05



Lot 42





### Big Dry Intuition L41

**45** Tattoo: L41 DOB: 4/2/2023 Reg. No. 20901187

Sitz Profile 1160  
**Sire:** Sitz Intuition  
Sitz Florabelle Fanny 5053  
Plattemere Weigh Up K360  
**Dam:** BDAR Blackette 633D  
BDAR Blackette 827U

BW Adj WW/Ratio Adj YW/Ratio SC  
86 609 / 102

S Values	
SM	72
SW	60
SF	85
SG	69
SB	155

A square built heavy muscled Intuition with good marbling.  
Good cow bull from a strong cowline.

EPDs Acc					Cacass EPDs Acc				
CED	Birth	Wean	Year	Milk	SC	Wt.	Marb.	Ribeye	Fat
+3	+2.5	+67	+121	+30	I+0.62	I+39	I+0.96	I+0.63	I+0.002
0.24	0.37	0.32	0.24	0.14	0.05	0.05	0.05	0.05	0.05

Dam Production: 6 BR 106,6 WR 102, 1 YR 98



### Big Dry Blueprint L42

**46** Tattoo: L42 DOB: 4/2/2023 Reg. No. 20902273

KM Broken Bow 002  
**Sire:** SydGen Blueprint  
Sitz Florabelle Fanny 4735

Connealy Cool 39L  
**Dam:** BDAR Queen Mother 849F  
BDAR Queen Mother 265Z

BW Adj WW/Ratio Adj YW/Ratio SC  
75 563 / 94

S Values	
SM	86
SW	51
SF	93
SG	54
SB	147

Heifer potential.  
Long, smooth-made Blueprint son.

EPDs Acc					Cacass EPDs Acc				
CED	Birth	Wean	Year	Milk	SC	Wt.	Marb.	Ribeye	Fat
+9	-0.2	+53	+99	+26	I+0.80	I+42	I+0.78	I+0.42	I+0.038
0.23	0.36	0.31	0.20	0.18	0.05	0.05	0.05	0.05	0.05



### Big Dry Intuition L43

**47** Tattoo: L43 DOB: 4/2/2023 Reg. No. 20901183

Sitz Profile 1160  
**Sire:** Sitz Intuition  
Sitz Florabelle Fanny 5053  
SydGen Black Velvet 4423  
**Dam:** BDAR Tulloch Duch 877F  
BDAR Tulloch Duch 409B

BW Adj WW/Ratio Adj YW/Ratio SC  
80 538 / 90

S Values	
SM	64
SW	56
SF	93
SG	54
SB	146

Heifer potential.  
Deep sided Intuition son.

EPDs Acc					Cacass EPDs Acc				
CED	Birth	Wean	Year	Milk	SC	Wt.	Marb.	Ribeye	Fat
+8	+1.0	+60	+112	+29	I+1.01	I+47	I+0.63	I+0.71	I+0.002
0.22	0.36	0.32	0.21	0.12	0.05	0.05	0.05	0.05	0.05



### Big Dry Stellar L44

**48** Tattoo: L44 DOB: 4/2/2023 Reg. No. 20900700

Sitz Stellar 726D  
**Sire:** Sitz Stellar 7300  
Sitz Blackbird 3136  
S A V Rainfall 6846  
**Dam:** BDAR Blackette 921G  
BDAR Blackette 261Z

BW Adj WW/Ratio Adj YW/Ratio SC  
82 588 / 98

S Values	
SM	72
SW	55
SF	81
SG	37
SB	118

Dam is moderate framed Rainfall daughter.  
Stellar sons are smooth and clean-made.

EPDs Acc					Cacass EPDs Acc				
CED	Birth	Wean	Year	Milk	SC	Wt.	Marb.	Ribeye	Fat
+7	-0.4	+52	+98	+30	I+0.80	I+31	I+0.40	I+0.62	I+0.043
0.17	0.35	0.29	0.15	0.13	0.05	0.05	0.05	0.05	0.05



Lot 49



### Big Dry Renew L45

**49** Tattoo: L45 DOB: 4/3/2023 Reg. No. 20901053

S A V Renown 3439  
**Sire:** S A V Renew 8132  
S A V Blackcap May 4593  
Connealy Confidence 0100  
**Dam:** BDAR Queen Mother 429B  
BDAR Queen Mother 255Z

BW Adj WW/Ratio Adj YW/Ratio SC  
80 519 / 86

S Values	
SM	74
SW	52
SF	79
SG	31
SB	110

Back by two generations of pathfinders this E.T. bull would work great on young cows and leave you with a fancy set of heifers with longevity. Full brother to Lot 58.

EPDs Acc					Cacass EPDs Acc				
CED	Birth	Wean	Year	Milk	SC	Wt.	Marb.	Ribeye	Fat
I+5	+0.5	+53	+92	+25	I+0.65	I+37	I+0.24	I+0.68	I+0.028
0.05	0.36	0.32	0.22	0.18	0.05	0.05	0.05	0.05	0.05

Dam Production: 8 BR 96,8 WR 101, 3 YR 102



**Lot 50**



**Big Dry-JDM Specialist L48**

**52**

Tattoo: L48

DOB: 4/4/2023 Reg. No.

20893738

Sire: S A V Sensation 5615  
 S A V Specialist 8896  
 S A V Madame Pride 3304  
 Soo Line Alternative 9127W  
 Dam: OCC Lucy 258  
 OCC Lucy 620

BW 70 Adj WW/Ratio 477 / 89 Adj YW/Ratio SC

S Values	
SM	64
SW	52
SF	83
SG	22
SB	104

Donor dam with WR 10/103. Lots of longevity in this cowline. Grasshoppers and drought impacted this 11 year-old cow last summer. This bull is a sleeper.

EPDs Acc						Cacass EPDs Acc			
CED	Birth	Wean	Year	Milk	SC	Wt.	Marb.	Ribeye	Fat
+ 9	-0.3	+ 50	+ 87	+ 29	1+ 0.90	1+ 40	1+ 0.04	1+ 0.50	1- 0.012
0.18	0.36	0.31	0.19	0.18	0.05	0.05	0.05	0.05	0.05

Dam Production: 10 BR 95, 10 WR 103, 4 YR 100



**Big Dry McCool L46**

**50**

Tattoo: L46

DOB: 4/3/2023

Reg. No. 20893737

Sire: S Thrive JAS 5515  
 S McLintock 9702  
 S Bessie 5544

Dam: Connealy Cool 39L  
 BDAR Lass 624D  
 BDAR Lass 446B

BW 85 Adj WW/Ratio 678 / 113 Adj YW/Ratio SC

S Values	
SM	68
SW	62
SF	112
SG	38
SB	150

A standout since birth, this McLintock son has Herd Bull potential. Backed by a donor dam, its hard to find a hole in his pedigree. McCool is heavy-muscled, moderate framed with a quiet disposition.

EPDs Acc						Cacass EPDs Acc			
CED	Birth	Wean	Year	Milk	SC	Wt.	Marb.	Ribeye	Fat
+ 7	+ 2.3	+ 80	+ 145	+ 23	1+ 1.40	1+ 62	1+ 0.38	1+ 0.77	1+ 0.042
0.18	0.35	0.30	0.19	0.12	0.05	0.05	0.05	0.05	0.05

Dam Production: 6 BR 100, 6 WR 105, 2 YR 98



**Big Dry Bronc L49**

**53**

Tattoo: L49

DOB: 4/4/2023

Reg. No. 20893739

Sire: 2XL Bronc 8153  
 Diamond Bronc H107  
 Diamond Trojan Erica 0824

Dam: S A V Raindance 6848  
 BDAR Queen Mother 028H  
 BDAR Queen Mother 326A

BW 79 Adj WW/Ratio 589 / 98 Adj YW/Ratio SC

S Values	
SM	73
SW	70
SF	74
SG	48
SB	123

Heifer potential.  
 A deep moderate framed Bronc with a donor granddam.

EPDs Acc						Cacass EPDs Acc			
CED	Birth	Wean	Year	Milk	SC	Wt.	Marb.	Ribeye	Fat
+ 10	-0.2	+ 65	+ 113	+ 32	1+ 0.95	1+ 43	1+ 0.63	1+ 0.56	1+ 0.042
0.19	0.35	0.29	0.15	0.12	0.05	0.05	0.05	0.05	0.05



**Big Dry-JDM Panther L47**

**51**

Tattoo: L47

DOB: 4/3/2023

Reg. No. 20903409

Sire: S A V Quarterback 7933  
 S A V Panther 1906  
 S A V Blackcap May 6644

Dam: S A V Cutting Edge 4857  
 S A V Madame Pride 6212  
 S A V Madame Pride 3145

BW 90 Adj WW/Ratio 560 / 92 Adj YW/Ratio SC

S Values	
SM	61
SW	52
SF	87
SG	28
SB	115

Herd Bull potential in this E.T. bull. Granddam, SAV Madame Pride 3145 is the top income producing cow at Schaff Angus Valley. 6212 is extremely long, with extra capacity and stands on good feet with a perfect udder.

EPDs Acc						Cacass EPDs Acc			
CED	Birth	Wean	Year	Milk	SC	Wt.	Marb.	Ribeye	Fat
1- 4	+ 4.0	+ 71	+ 128	+ 25	1+ 0.78	1+ 49	1+ 0.17	1+ 0.61	1+ 0.016
0.05	0.35	0.30	0.20	0.14	0.05	0.05	0.05	0.05	0.05



**Lot 51**



### Big Dry-BFM McLintock L50

**54** Tattoo: L50 DOB: 4/4/2023 Reg. No. 20893740

S Thrive JAS 5515  
Sire: S McLintock 9702  
S Bessie 5544

Musgrave Big Sky  
Dam: Vermilion Blackbird 5210  
Vermilion Blackbird 0114

BW Adj WW/Ratio Adj YW/Ratio SC  
70 542 / 102

S Values	
SM	58
SW	61
SF	107
SG	36
SB	144

Out of the top-selling bred heifer in the 2016 Vermilion Ranch Fall Sale. Good WW and YW with this McLintock son.

EPDs Acc					Cacass EPDs Acc				
CED	Birth	Wean	Year	Milk	SC	Wt.	Marb.	Ribeye	Fat
+12	-0.2	+76	+136	+19	1+1.30	1+58	1+0.28	1+0.78	1+0.004
0.18	0.36	0.30	0.20	0.13	0.05	0.05	0.05	0.05	0.05

Dam Production: 6 BR 87,6 WR 94, 1 YR 100



### Big Dry Renew L51

**55** Tattoo: L51 DOB: 4/4/2023 Reg. No. 20901051

S A V Renown 3439  
Sire: S A V Renew 8132  
S A V Blackcap May 4593

Connealy Cool 39L  
Dam: BDAR Zara 750E  
BDAR Zara 021X

BW Adj WW/Ratio Adj YW/Ratio SC  
94 670 / 112

S Values	
SM	75
SW	61
SF	101
SG	51
SB	152

A cowboys kind of bull... Muscling with extra frame.

EPDs Acc					Cacass EPDs Acc				
CED	Birth	Wean	Year	Milk	SC	Wt.	Marb.	Ribeye	Fat
-2	+4.6	+85	+144	+22	1+1.57	1+59	1+0.60	1+0.75	1+0.022
0.19	0.37	0.32	0.21	0.17	0.05	0.05	0.05	0.05	0.05

Dam Production: 5 BR 106,4 WR 103, 1 YR 98



### Big Dry Stellar L52

**56** Tattoo: L52 DOB: 4/4/2023 Reg. No. 20893741

Sitz Stellar 726D  
Sire: Sitz Stellar 7300  
Sitz Blackbird 3136

SydGen Black Velvet 4423  
Dam: BDAR Lass 963G  
BDAR Lass 266Z

BW Adj WW/Ratio Adj YW/Ratio SC  
77 567 / 95

S Values	
SM	67
SW	50
SF	71
SG	40
SB	111

Heifer potential.  
A deep-sided Stellar son. Granddam is a donor.

EPDs Acc					Cacass EPDs Acc				
CED	Birth	Wean	Year	Milk	SC	Wt.	Marb.	Ribeye	Fat
+6	+0.4	+50	+90	+27	1+0.72	1+29	1+0.46	1+0.59	1+0.037
0.16	0.35	0.29	0.15	0.12	0.05	0.05	0.05	0.05	0.05



### Big Dry Specialist L53

**57** Tattoo: L53 DOB: 4/5/2023 Reg. No. 20893742

S A V Sensation 5615  
Sire: S A V Specialist 8896  
S A V Madame Pride 3304

Sitz Investmen 294B  
Dam: BDAR Eisa Trojan Erica 730B  
BDAR Eisa Trojan Erica 444B

BW Adj WW/Ratio Adj YW/Ratio SC  
86 652 / 109

S Values	
SM	68
SW	62
SF	102
SG	25
SB	127

Extra frame and big middled. This Specialist son would work great on young cows. Specialist daughter have exceeded our expectations a working cows, they are really good.

EPDs Acc					Cacass EPDs Acc				
CED	Birth	Wean	Year	Milk	SC	Wt.	Marb.	Ribeye	Fat
+5	+1.9	+70	+129	+28	1+0.68	1+48	1+0.24	1+0.32	1+0.045
0.18	0.36	0.31	0.17	0.15	0.05	0.05	0.05	0.05	0.05

Dam Production: 4 BR 101,4 WR 103, 1 YR 115



### Big Dry Renew L54

**58** Tattoo: L54 DOB: 4/5/2023 Reg. No. 20901058

S A V Renown 3439  
Sire: S A V Renew 8132  
S A V Blackcap May 4593

Connealy Confidence 0100  
Dam: BDAR Queen Mother 429B  
BDAR Queen Mother 255Z

BW Adj WW/Ratio Adj YW/Ratio SC  
87 533 / 88

S Values	
SM	79
SW	55
SF	83
SG	31
SB	114

E.T. bull. This Renew son displays good muscling with a feminine, good-footed, nice uddered donor behind him. Full brother to Lot 49.

EPDs Acc					Cacass EPDs Acc				
CED	Birth	Wean	Year	Milk	SC	Wt.	Marb.	Ribeye	Fat
1+5	+2.3	+61	+105	+25	1+0.65	1+37	1+0.24	1+0.68	1+0.028
0.05	0.36	0.32	0.22	0.18	0.05	0.05	0.05	0.05	0.05

Dam Production: 8 BR 96,8 WR 101, 3 YR 102



### Big Dry Stellar L55

**59** Tattoo: L55 DOB: 4/5/2023 Reg. No. 20900701

Sitz Stellar 726D  
Sire: Sitz Stellar 7300  
Sitz Blackbird 3136

BDAR-JDM Ratify D1  
Dam: BDAR-BFM Queen 960G  
JLF Queen of Paintrock 5113

BW Adj WW/Ratio Adj YW/Ratio SC  
80 507 / 95

S Values	
SM	59
SW	55
SF	96
SG	40
SB	136

Heifer potential.  
Nice made Stellar son.

EPDs Acc					Cacass EPDs Acc				
CED	Birth	Wean	Year	Milk	SC	Wt.	Marb.	Ribeye	Fat
+5	+1.1	+61	+112	+25	1+0.91	1+49	1+0.40	1+0.85	1+0.046
0.16	0.34	0.28	0.14	0.12	0.05	0.05	0.05	0.05	0.05



### Big Dry Reformer L56

**60** Tattoo: L56 DOB: 4/6/2023 Reg. No. 20901062

Sire: Connealy Reformed  
Connealy Reformer  
Jaycee of Conanga 6560

Dam: BDAR Ruby 747E  
Sitz Royal 9784  
BDAR Ruby 406C

BW 84 Adj WW/Ratio 644 / 106 Adj YW/Ratio SC

S Values	
SM	74
SW	66
SF	102
SG	56
SB	158

E.T. bull out of our 747E donor cow. This big performing herd bull has lots of capacity with a solid topline. Reformer is a past high-selling bull at Connealy's. Maternal brother to lot 81.

EPDs Acc					Cacass EPDs Acc				
CED	Birth	Wean	Year	Milk	SC	Wt.	Marb.	Ribeye	Fat
I+8	+1.3	+70	+128	+30	I+1.58	I+48	I+0.69	I+0.84	I+0.033
0.05	0.35	0.30	0.19	0.12	0.05	0.05	0.05	0.05	0.05

Dam Production: 5 BR 101,5 WR 104, 2 YR 107



### Big Dry Tahoe L57

**61** Tattoo: L57 DOB: 4/6/2023 Reg. No. 20905801

Sire: Tehama Upward Y238  
Tehama Tahoe B767  
Tehama Mary Blackbird Y684

Dam: BDAR Pride 227Z  
S A V Mustang 9134  
Vermilion Pride 7050

BW 86 Adj WW/Ratio 592 / 98 Adj YW/Ratio SC

S Values	
SM	70
SW	64
SF	84
SG	45
SB	129

E.T. bull. A heavy muscled herd bull with a maternal power behind him. The Tahoe/227z cross will leave a set of easy keeping, good milking replacements. Maternal brother to lot 41.

EPDs Acc					Cacass EPDs Acc				
CED	Birth	Wean	Year	Milk	SC	Wt.	Marb.	Ribeye	Fat
I+8	+1.3	+63	+110	+32	I+0.93	I+38	I+0.56	I+0.49	I+0.030
0.05	0.37	0.33	0.24	0.24	0.05	0.05	0.05	0.05	0.05

Dam Production: 10 BR 103,10 WR 105, 3 YR 104



### Big Dry Stellar L59

**63** Tattoo: L59 DOB: 4/6/2023 Reg. No. 20893744

Sire: Sitz Stellar 726D  
Sitz Stellar 7300  
Sitz Blackbird 3136

Dam: BDAR Eldorene 957G  
Coleman Bravo 6313  
BDAR Eldorene 738E

BW 75 Adj WW/Ratio 649 / 108 Adj YW/Ratio SC

S Values	
SM	80
SW	67
SF	82
SG	38
SB	121

A really good Stellar son with tons of rib. Dam is a top daughter of Bravo that record 2@108 nursing ratio. This bull will not only make great feeders, the daughters will be super cows, look him up.

EPDs Acc					Cacass EPDs Acc				
CED	Birth	Wean	Year	Milk	SC	Wt.	Marb.	Ribeye	Fat
+8	+0.2	+70	+124	+27	I+1.48	I+39	I+0.51	I+0.47	I+0.075
0.18	0.35	0.29	0.15	0.12	0.05	0.05	0.05	0.05	0.05



### Big Dry McLintock L58

**62** Tattoo: L58 DOB: 4/6/2023 Reg. No. 20893743

Sire: S Thrive JAS 5515  
S McLintock 9702  
S Bessie 5544

Dam: BDAR Lass 701E  
BDAR Fat Cat Z077  
BDAR Lass 110Y

BW 86 Adj WW/Ratio 633 / 106 Adj YW/Ratio SC

S Values	
SM	45
SW	54
SF	103
SG	48
SB	151

Solid performing cow bull with extra frame. Good weaning ratio.

EPDs Acc					Cacass EPDs Acc				
CED	Birth	Wean	Year	Milk	SC	Wt.	Marb.	Ribeye	Fat
+5	+2.5	+75	+137	+20	I+1.39	I+55	I+0.57	I+0.61	I+0.011
0.17	0.36	0.30	0.18	0.13	0.05	0.05	0.05	0.05	0.05

Dam Production: 5 BR 102,5 WR 100, 1 YR 102





### Big Dry McIntock L61

**64** Tattoo: L61 DOB: 4/7/2023 Reg. No. 20893746

S Thrive JAS 5515  
**Sire:** S McIntock 9702  
S Bessie 5544  
Connealy Consensus 7229  
**Dam:** BDAR Lass 266Z  
B D A R Marv Lass 2991

BW Adj WW/Ratio Adj YW/Ratio SC  
82 688 / 113

S Values	
SM	59
SW	62
SF	80
SG	40
SB	121

E.T. bull Lot 64 should leave you with exceptional daughters for the long-run. Maternal brother to lot 37

EPDs Acc					Cacass EPDs Acc				
CED	Birth	Wean	Year	Milk	SC	Wt.	Marb.	Ribeye	Fat
I+8	+1.0	+67	+118	+26	I+0.79	I+33	I+0.41	I+0.53	I-0.003
0.05	0.36	0.31	0.20	0.15	0.05	0.05	0.05	0.05	0.05

Dam Production: 10 BR 99,10 WR 105, 4 YR 101



### Big Dry-BFM Escalate L62

**65** Tattoo: L62 DOB: 4/8/2023 Reg. No. 20901161

SydGen Enhance  
**Sire:** SydGen Escalate 9017  
SydGen Royal Queen 3482  
V A R Generation 2100  
**Dam:** JLF Queen of Paintrock 5113  
Queen of Paintrock 68-6

BW Adj WW/Ratio Adj YW/Ratio SC  
93 539 / 101

S Values	
SM	68
SW	58
SF	102
SG	51
SB	153

Nice Escalate son with added frame.

EPDs Acc					Cacass EPDs Acc				
CED	Birth	Wean	Year	Milk	SC	Wt.	Marb.	Ribeye	Fat
I+5	I+3.3	I+63	I+105	I+25	I+0.81	I+49	I+0.50	I+0.96	I-0.006
0.05	0.37	0.34	0.05	0.21	0.05	0.05	0.05	0.05	0.05

Dam Production: 7 BR 103,7 WR 101, 2 YR 103



### Big Dry Stellar L63

**66** Tattoo: L63 DOB: 4/8/2023 Reg. No. 20893747

Sitz Stellar 726D  
**Sire:** Sitz Stellar 7300  
Sitz Blackbird 3136  
SydGen Black Velvet 4423  
**Dam:** BDAR Miss 903G  
BDAR Miss 340A

BW Adj WW/Ratio Adj YW/Ratio SC  
81 596 / 99

S Values	
SM	55
SW	49
SF	83
SG	48
SB	130

A Stellar that will work well on your young cows.

EPDs Acc					Cacass EPDs Acc				
CED	Birth	Wean	Year	Milk	SC	Wt.	Marb.	Ribeye	Fat
+5	+0.4	+53	+104	+27	I+0.64	I+31	I+0.64	I+0.56	I+0.053
0.16	0.34	0.29	0.15	0.12	0.05	0.05	0.05	0.05	0.05



### Big Dry Stellar L64

**67** Tattoo: L64 DOB: 4/8/2023 Reg. No. 20893748

Sitz Stellar 726D  
**Sire:** Sitz Stellar 7300  
Sitz Blackbird 3136  
BDAR Upscale D69  
**Dam:** BDAR Lass 918G  
BDAR Lass 701E

BW Adj WW/Ratio Adj YW/Ratio SC  
75 539 / 90

S Values	
SM	51
SW	54
SF	93
SG	56
SB	149

Nice Stellar son with solid marbling.

EPDs Acc					Cacass EPDs Acc				
CED	Birth	Wean	Year	Milk	SC	Wt.	Marb.	Ribeye	Fat
+8	-0.2	+58	+107	+26	I+1.13	I+46	I+0.77	I+0.61	I+0.044
0.17	0.34	0.28	0.14	0.11	0.05	0.05	0.05	0.05	0.05



### Big Dry Stellar L65

**68** Tattoo: L65 DOB: 4/8/2023 Reg. No. 20893749

Sitz Stellar 726D  
**Sire:** Sitz Stellar 7300  
Sitz Blackbird 3136  
Sitz Royal 9784  
**Dam:** BDAR Queen Mother 946G  
BDAR Queen Mother 637D

BW Adj WW/Ratio Adj YW/Ratio SC  
80 627 / 105

S Values	
SM	51
SW	55
SF	85
SG	46
SB	131

Big ribeyed Stellar son. Stellar heifers are incredibly even with the right build for eastern MT.

EPDs Acc					Cacass EPDs Acc				
CED	Birth	Wean	Year	Milk	SC	Wt.	Marb.	Ribeye	Fat
+8	+0.4	+60	+113	+27	I+1.47	I+38	I+0.56	I+0.68	I+0.044
0.17	0.34	0.29	0.16	0.12	0.05	0.05	0.05	0.05	0.05



### Big Dry-JDM Cool L66

**69** Tattoo: L66 DOB: 4/9/2023 Reg. No. 20893750

Connealy Cool 39L  
**Sire:** Big Dry Cool H82  
BDAR E T Duchess 538C  
S A V Rairdance 6848  
**Dam:** BDAR-JDM Blackcap 050H  
Sitz Blackcap 1499

BW Adj WW/Ratio Adj YW/Ratio SC  
90 546 / 102

S Values	
SM	68
SW	60
SF	86
SG	39
SB	125

Wide topped H82 son backed by a donor granddam.

EPDs Acc					Cacass EPDs Acc				
CED	Birth	Wean	Year	Milk	SC	Wt.	Marb.	Ribeye	Fat
+7	+3.0	+64	+112	+32	I+1.22	I+46	I+0.27	I+0.93	I-0.013
0.17	0.34	0.27	0.14	0.12	0.05	0.05	0.05	0.05	0.05



## Big Dry Stellar L67

**70** Tattoo: L67 DOB: 4/9/2023 Reg. No. 20893751

Sitz Stellar 726D  
Sire: Sitz Stellar 7300  
Sitz Blackbird 3136

BDAR Royal E13  
Dam: BDAR Queen Mother 907G  
BDAR Queen Mother 432B

BW Adj WW/Ratio Adj YW/Ratio SC  
75 551 / 92

Heifer potential.

S Values	
SM	63
SW	51
SF	89
SG	45
SB	135

EPDs Acc					Cacass EPDs Acc				
CED	Birth	Wean	Year	Milk	SC	Wt.	Marb.	Ribeye	Fat
+8	+0.2	+53	+98	+26	I+0.76	I+41	I+0.56	I+0.67	I+0.052
0.16	0.34	0.28	0.14	0.11	0.05	0.05	0.05	0.05	0.05



## Big Dry Bronc L68

**71** Tattoo: L68 DOB: 4/10/2023 Reg. No. 20893752

2XL Bronc 8153  
Sire: Diamond Bronc H107  
Diamond Trojan Erica 0824

Tehama Tahoe B767  
Dam: BDAR Blackette 003H  
BDAR Blackette 809F

BW Adj WW/Ratio Adj YW/Ratio SC  
81 628 / 105

Lots of performance with added length and high HP on this good Bronc son.

S Values	
SM	84
SW	78
SF	94
SG	68
SB	162

EPDs Acc					Cacass EPDs Acc				
CED	Birth	Wean	Year	Milk	SC	Wt.	Marb.	Ribeye	Fat
+6	+1.2	+80	+136	+31	I+1.22	I+58	I+0.95	I+0.79	I+0.037
0.20	0.35	0.29	0.14	0.12	0.05	0.05	0.05	0.05	0.05



## Big Dry Bronc L70

**73** Tattoo: L70 DOB: 4/10/2023 Reg. No. 20893754

2XL Bronc 8153  
Sire: Diamond Bronc H107  
Diamond Trojan Erica 0824

Bruin Torque 5261  
Dam: BDAR Lass 017H  
Bdar Lass 353A

BW Adj WW/Ratio Adj YW/Ratio SC  
86 633 / 106

Extra length and powerful performance in this good Bronc son.

S Values	
SM	79
SW	66
SF	91
SG	50
SB	141

EPDs Acc					Cacass EPDs Acc				
CED	Birth	Wean	Year	Milk	SC	Wt.	Marb.	Ribeye	Fat
+7	+1.4	+67	+119	+30	I+0.95	I+48	I+0.66	I+0.54	I+0.039
0.18	0.35	0.29	0.14	0.12	0.05	0.05	0.05	0.05	0.05



## Big Dry Bronc L69

**72** Tattoo: L69 DOB: 4/10/2023 Reg. No. 20893753

2XL Bronc 8153  
Sire: Diamond Bronc H107  
Diamond Trojan Erica 0824

Spring Cove Pioneer 120F  
Dam: BDAR Young Lucy 013H  
BDAR Young Lucy 837F

BW Adj WW/Ratio Adj YW/Ratio SC  
76 586 / 98

Nice moderate framed, big ribeyed Bronc son.

S Values	
SM	84
SW	72
SF	81
SG	53
SB	134

EPDs Acc					Cacass EPDs Acc				
CED	Birth	Wean	Year	Milk	SC	Wt.	Marb.	Ribeye	Fat
+3	+2.2	+77	+124	+26	I+0.78	I+50	I+0.57	I+0.93	I+0.011
0.19	0.34	0.28	0.13	0.10	0.05	0.05	0.05	0.05	0.05



## Big Dry Conception L71

**74** Tattoo: L71 DOB: 4/10/2023 Reg. No. 20893755

BDAR-JDM Conception E40  
Sire: Big Dry Conception H54  
BDAR-JDM Lucy 16

SydGen Dealer 9883  
Dam: BDAR Blackbird 518C  
BDAR Blackbird 803U

BW Adj WW/Ratio Adj YW/Ratio SC  
80 570 / 95

Dam is a easy keeping, feminine cow with more frame on this docile Specialist son.

S Values	
SM	58
SW	58
SF	104
SG	45
SB	149

EPDs Acc					Cacass EPDs Acc				
CED	Birth	Wean	Year	Milk	SC	Wt.	Marb.	Ribeye	Fat
I+7	I-0.2	I+56	I+112	I+32	I-0.07	I+52	I+0.46	I+0.67	I-0.011
0.05	0.28	0.24	0.05	0.18	0.05	0.05	0.05	0.05	0.05



### Big Dry Specialist L72

**75** Tattoo: L72 DOB: 4/10/2023 Reg. No. 20893756

Sire: S A V Sensation 5615  
S A V Specialist 8896  
S A V Madame Pride 3304  
Ellingson Homestead 6030  
Dam: BDAR Forever Lady 813F  
BDAR Forever Lady 608D

BW 88 Adj WW/Ratio 669 / 112 Adj YW/Ratio SC

S Values	
SM	70
SW	68
SF	106
SG	42
SB	148

A wide-topped, moderate-framed Specialist son backed by a strong cowline. Good bull.

EPDs Acc					Cacass EPDs Acc				
CED	Birth	Wean	Year	Milk	SC	Wt.	Marb.	Ribeye	Fat
+7	+1.3	+78	+141	+26	I+1.32	I+56	I+0.41	I+0.67	I+0.002
0.19	0.36	0.30	0.18	0.15	0.05	0.05	0.05	0.05	0.05



### Big Dry Escalate L75

**78** Tattoo: L75 DOB: 4/16/2023 Reg. No. 20893759

Sire: SydGen Enhance  
SydGen Escalate 9017  
SydGen Royal Queen 3482  
Sitz Investmen 294B  
Dam: BDAR Young Lucy 743E  
BDAR Young Lucy 356A

BW 88 Adj WW/Ratio 658 / 110 Adj YW/Ratio SC

S Values	
SM	60
SW	61
SF	112
SG	52
SB	164

Lots of eye appeal with loads of performance on this really good Escalate son. Check out his weaning ratio.

EPDs Acc					Cacass EPDs Acc				
CED	Birth	Wean	Year	Milk	SC	Wt.	Marb.	Ribeye	Fat
+3	+2.2	+66	+124	+33	I+0.88	I+53	I+0.67	I+0.61	I+0.031
0.17	0.34	0.28	0.15	0.13	0.05	0.05	0.05	0.05	0.05



### Big Dry Specialist L73

**76** Tattoo: L73 DOB: 4/13/2023 Reg. No. 20893757

Sire: S A V Sensation 5615  
S A V Specialist 8896  
S A V Madame Pride 3304  
S A V Rainfall 6846  
Dam: BDAR Queen Mother 846F  
BDAR Queen Mother 904W

BW 85 Adj WW/Ratio 645 / 108 Adj YW/Ratio SC

S Values	
SM	65
SW	57
SF	94
SG	43
SB	137

Lots of volume and high HP on this good Specialist son. Really good weaning ratio.

EPDs Acc					Cacass EPDs Acc				
CED	Birth	Wean	Year	Milk	SC	Wt.	Marb.	Ribeye	Fat
+5	+1.6	+65	+120	+25	I+0.98	I+42	I+0.53	I+0.35	I+0.009
0.19	0.36	0.31	0.18	0.15	0.05	0.05	0.05	0.05	0.05

Dam Production: 3 BR 101,3 WR 104, 1 YR 116



### Big Dry Conception L74

**77** Tattoo: L74 DOB: 4/15/2023 Reg. No. 20893758

Sire: BDAR-JDM Conception E40  
Big Dry Conception H54  
BDAR-JDM Lucy 16  
Connealy Cool 39L  
Dam: BDAR Queen Mother 719E  
BDAR Queen Mother 243Z

BW 88 Adj WW/Ratio 597 / 100 Adj YW/Ratio SC

S Values	
SM	71
SW	60
SF	96
SG	37
SB	134

Backed by a donor granddam, this H82 son carries extra frame and added length.

EPDs Acc					Cacass EPDs Acc				
CED	Birth	Wean	Year	Milk	SC	Wt.	Marb.	Ribeye	Fat
I+10	I+1.2	I+61	I+111	I+28	I+0.83	I+47	I+0.28	I+0.72	I-0.016
0.05	0.27	0.23	0.05	0.18	0.05	0.05	0.05	0.05	0.05

Dam Production: 4 BR 97,4 WR 100, 1 YR 101



### Big Dry Bronc L76

**79** Tattoo: L76 DOB: 4/18/2023 Reg. No. 20893760

Sire: 2XL Bronc 8153  
Diamond Bronc H107  
Diamond Trojan Erica 0824  
Bruin Torque 5261  
Dam: BDAR Ruby 037H  
BDAR Ruby 343A

BW 75 Adj WW/Ratio 697 / 116 Adj YW/Ratio SC

S Values	
SM	75
SW	77
SF	98
SG	55
SB	153

High WR and great extension on this good Bronc son.

EPDs Acc					Cacass EPDs Acc				
CED	Birth	Wean	Year	Milk	SC	Wt.	Marb.	Ribeye	Fat
+12	-0.2	+80	+137	+28	I+0.90	I+57	I+0.68	I+0.75	I+0.027
0.18	0.35	0.29	0.14	0.12	0.05	0.05	0.05	0.05	0.05



### Big Dry Escalate L77

**80** Tattoo: L77 DOB: 4/19/2023 Reg. No. 20893761

SydGen Enhance  
Sire: SydGen Escalate 9017  
SydGen Royal Queen 3482

Sitz Royal 9784  
Dam: BDAR Ruby 747E  
BDAR Ruby 406C

BW Adj WW/Ratio Adj YW/Ratio SC  
87 683 / 114

S Values	
SM	81
SW	70
SF	94
SG	55
SB	149

Big performance with a donor dam. Maternal brother to lot 60. This bull should make some nice replacement heifers and solid feeder steers.

EPDs Acc					Cacass EPDs Acc				
CED	Birth	Wean	Year	Milk	SC	Wt.	Marb.	Ribeye	Fat
I+5	I+2.2	I+67	I+113	I+32	I+1.54	I+47	I+0.67	I+0.77	I+0.019
0.05	0.37	0.34	0.05	0.20	0.05	0.05	0.05	0.05	0.05

Dam Production: 5 BR 101,5 WR 104, 2 YR 107



### Big Dry Stellar L78

**81** Tattoo: L78 DOB: 4/18/2023 Reg. No. 20893762

Sitz Stellar 726D  
Sire: Sitz Stellar 7300  
Sitz Blackbird 3136

BDAR-JDM Conception E40  
Dam: Bdar Lass 926G  
Bdar Lass 353A

BW Adj WW/Ratio Adj YW/Ratio SC  
84 565 / 94

S Values	
SM	54
SW	51
SF	87
SG	35
SB	121

Nice made cow bull.

EPDs Acc					Cacass EPDs Acc				
CED	Birth	Wean	Year	Milk	SC	Wt.	Marb.	Ribeye	Fat
+3	+1.6	+57	+108	+28	I+1.49	I+42	I+0.38	I+0.54	I+0.046
0.16	0.34	0.28	0.14	0.11	0.05	0.05	0.05	0.05	0.05



### Big Dry Stellar L79

**82** Tattoo: L79 DOB: 4/21/2023 Reg. No. 20893763

Sitz Stellar 726D  
Sire: Sitz Stellar 7300  
Sitz Blackbird 3136

BDAR Royal E13  
Dam: BDAR Queen Mother 956G  
BDAR Queen Mother 029X

BW Adj WW/Ratio Adj YW/Ratio SC  
84 610 / 100

S Values	
SM	66
SW	56
SF	92
SG	42
SB	134

Solid performing cow bull.

EPDs Acc					Cacass EPDs Acc				
CED	Birth	Wean	Year	Milk	SC	Wt.	Marb.	Ribeye	Fat
+4	+2.0	+66	+117	+23	I+1.07	I+45	I+0.43	I+0.75	I+0.029
0.16	0.34	0.28	0.14	0.11	0.05	0.05	0.05	0.05	0.05



### Big Dry Bronc L80

**83** Tattoo: L80 DOB: 4/23/2023 Reg. No. 20893764

2XL Bronc 8153  
Sire: Diamond Bronc H107  
Diamond Trojan Erica 0824

S A V Specialist 8896  
Dam: BDAR Lass 023H  
BDAR Lass 423B

BW Adj WW/Ratio Adj YW/Ratio SC  
70 678 / 111

S Values	
SM	62
SW	71
SF	100
SG	50
SB	150

Moderate framed Bronc son packed with performance.

EPDs Acc					Cacass EPDs Acc				
CED	Birth	Wean	Year	Milk	SC	Wt.	Marb.	Ribeye	Fat
+8	-0.9	+75	+128	+23	I+0.84	I+56	I+0.61	I+0.65	I+0.024
0.18	0.35	0.29	0.13	0.11	0.05	0.05	0.05	0.05	0.05



### Big Dry Conception L81

**84** Tattoo: L81 DOB: 4/23/2023 Reg. No. 20893765

BDAR-JDM Conception E40  
Sire: Big Dry Conception H54  
BDAR-JDM Lucy 16

SydGen Dealer 9883  
Dam: BDAR Queen Mother 345A  
BDAR Queen Mother 915W

BW Adj WW/Ratio Adj YW/Ratio SC  
78 623 / 102

S Values	
SM	53
SW	59
SF	91
SG	36
SB	127

A nice profiled Specialist son. Maternal brother to our herd bull H21.

EPDs Acc					Cacass EPDs Acc				
CED	Birth	Wean	Year	Milk	SC	Wt.	Marb.	Ribeye	Fat
I+2	I+0.9	I+56	I+104	I+32	I+0.25	I+41	I+0.29	I+0.56	I-0.019
0.05	0.29	0.25	0.05	0.19	0.05	0.05	0.05	0.05	0.05

Dam Production: 9 BR 102,9 WR 102, 2 YR 102



### Big Dry Cool L82

**85** Tattoo: L82 DOB: 4/23/2023 Reg. No. 20893766

Connealy Cool 39L  
Sire: Big Dry Cool H21  
BDAR Queen Mother 345A

SydGen Big Medicine 1558  
Dam: BDAR Lass 438B  
BDAR Lass 923W

BW Adj WW/Ratio Adj YW/Ratio SC  
90 639 / 104

S Values	
SM	58
SW	48
SF	80
SG	43
SB	123

Backed a good cowline with solid WR performance.

EPDs Acc					Cacass EPDs Acc				
CED	Birth	Wean	Year	Milk	SC	Wt.	Marb.	Ribeye	Fat
+2	+3.7	+57	+99	+26	I+0.52	I+32	I+0.50	I+0.40	I+0.001
0.17	0.35	0.28	0.15	0.14	0.05	0.05	0.05	0.05	0.05

Dam Production: 8 BR 101,8 WR 102, 3 YR 99





### Big Dry Conception L83

**86** Tattoo: L83 DOB: 4/24/2023 Reg. No. 20893767

BDAR-JDM Conception E40  
Sire: Big Dry Conception H54  
BDAR-JDM Lucy 16

Sitz Royal 9784  
Dam: BDAR Jane 729B  
BDAR Jane 450B

BW Adj WW/Ratio Adj YW/Ratio SC  
78 632 / 103

S Values	
SM	48
SW	58
SF	107
SG	40
SB	147

A large framed H21 son that goes back to cowline with lots of performance.

EPDs Acc					Cacass EPDs Acc				
CED	Birth	Wean	Year	Milk	SC	Wt.	Marb.	Ribeye	Fat
I+5	I+2.2	I+64	I+121	I+29	I+0.48	I+57	I+0.32	I+0.73	I-0.021
0.05	0.27	0.23	0.05	0.18	0.05	0.05	0.05	0.05	0.05



### Big Dry-JDM Cool L84

**87** Tattoo: L84 DOB: 4/24/2023 Reg. No. 20893768

Connealy Cool 39L  
Sire: Big Dry Cool H82  
BDAR E T Duchess 538C

SydGen Blueprint  
Dam: S Blanche 9630  
Farview SGD Blanche 2197

BW Adj WW/Ratio Adj YW/Ratio SC  
80 512 / 96

S Values	
SM	67
SW	60
SF	78
SG	37
SB	115

Smooth made heifer bull.

EPDs Acc					Cacass EPDs Acc				
CED	Birth	Wean	Year	Milk	SC	Wt.	Marb.	Ribeye	Fat
+5	+2.1	+62	+103	+29	I+1.14	I+42	I+0.34	I+0.63	I+0.010
0.17	0.34	0.27	0.15	0.12	0.05	0.05	0.05	0.05	0.05



### Big Dry Conception L86

**89** Tattoo: L86 DOB: 4/25/2023 Reg. No. 20893770

BDAR-JDM Conception E40  
Sire: Big Dry Conception H54  
BDAR-JDM Lucy 16

Connealy Cool 39L  
Dam: BDAR Queen Mother 641D  
BDAR Queen Mother 326A

BW Adj WW/Ratio Adj YW/Ratio SC  
87 577 / 94

S Values	
SM	65
SW	55
SF	99
SG	36
SB	135

Soggy made, big hipped H21 son backed by a donor granddam.

EPDs Acc					Cacass EPDs Acc				
CED	Birth	Wean	Year	Milk	SC	Wt.	Marb.	Ribeye	Fat
I+7	I+2.3	I+56	I+108	I+33	I+1.06	I+50	I+0.26	I+0.72	I-0.009
0.05	0.28	0.24	0.05	0.18	0.05	0.05	0.05	0.05	0.05

Dam Production: 6 BR 96.6 WR 96, 1 YR 102



### Big Dry Bronc L85

**88** Tattoo: L85 DOB: 4/25/2023 Reg. No. 20893769

2XL Bronc 8153  
Sire: Diamond Bronc H107  
Diamond Trojan Erica 0824

S A V Raindance 6848  
Dam: BDAR Ruby 040H  
BDAR Ruby 905W

BW Adj WW/Ratio Adj YW/Ratio SC  
80 598 / 98

S Values	
SM	63
SW	66
SF	101
SG	53
SB	155

Big ribeyed Bronc son.

EPDs Acc					Cacass EPDs Acc				
CED	Birth	Wean	Year	Milk	SC	Wt.	Marb.	Ribeye	Fat
+9	+1.2	+74	+132	+26	I+0.69	I+62	I+0.67	I+0.82	I+0.047
0.19	0.35	0.29	0.14	0.12	0.05	0.05	0.05	0.05	0.05



### Big Dry Stellar L87

**90** Tattoo: L87 DOB: 4/25/2023 Reg. No. 20893771

Sitz Stellar 726D  
Sire: Sitz Stellar 7300  
Sitz Blackbird 3136

Sitz Royal 9784  
Dam: BDAR Lass 826F  
BDAR Lass 514C

BW Adj WW/Ratio Adj YW/Ratio SC  
84 719 / 117

S Values	
SM	75
SW	70
SF	75
SG	42
SB	116

Big bodied Stellar son with high WR.

EPDs Acc					Cacass EPDs Acc				
CED	Birth	Wean	Year	Milk	SC	Wt.	Marb.	Ribeye	Fat
I+12	I+0.4	I+66	I+109	I+29	I+1.39	I+36	I+0.48	I+0.67	I+0.047
0.05	0.31	0.28	0.05	0.19	0.05	0.05	0.05	0.05	0.05



### Big Dry Specialist L89

**91** Tattoo: L89 DOB: 4/26/2023 Reg. No. 20893773

Sire: S A V Sensation 5615  
S A V Specialist 8896  
S A V Madame Pride 3304  
Ellingson Homestead 6030  
Dam: BDAR Ruby 812F  
BDAR Ruby 639D

BW Adj WW/Ratio Adj YW/Ratio SC  
75 729 / 119

S Values	
SM	51
SW	67
SF	104
SG	33
SB	137

A big-framed Specialist cow bull packed with performance.

EPDs Acc					Cacass EPDs Acc				
CED	Birth	Wean	Year	Milk	SC	Wt.	Marb.	Ribeye	Fat
+5	+1.8	+84	+150	+24	1+1.47	1+58	1+0.27	1+0.62	1+0.012
0.19	0.36	0.30	0.18	0.15	0.05	0.05	0.05	0.05	0.05

Dam Production: 4 BR 92,4 WR 109, 1 YR 105



### Big Dry Stellar L90

**92** Tattoo: L90 DOB: 4/27/2023 Reg. No. 20893775

Sire: Sitz Stellar 726D  
Sitz Stellar 7300  
Sitz Blackbird 3136

Dam: BDAR Upscale D69  
BDAR Lass 816F  
BDAR Lass 623D

BW Adj WW/Ratio Adj YW/Ratio SC  
82 589 / 96

S Values	
SM	53
SW	58
SF	104
SG	53
SB	157

Heifer potential.  
Dam had top selling bull in the 2021 sale to Wittkopp Angus Circle, MT.

EPDs Acc					Cacass EPDs Acc				
CED	Birth	Wean	Year	Milk	SC	Wt.	Marb.	Ribeye	Fat
1+7	1+0.6	1+64	1+122	1+26	1+0.80	1+52	1+0.71	1+0.64	1+0.045
0.05	0.31	0.28	0.05	0.18	0.05	0.05	0.05	0.05	0.05

Dam Production: 4 BR 101,4 WR 104, 1 YR 114



### Big Dry Specialist L91

**93** Tattoo: L91 DOB: 4/28/2023 Reg. No. 20893776

Sire: S A V Sensation 5615  
S A V Specialist 8896  
S A V Madame Pride 3304

Dam: BDAR Fat Cat Z077  
BDAR Queen Mother 537C  
BDAR Queen Mother 116Y

BW Adj WW/Ratio Adj YW/Ratio SC  
80 661 / 108

S Values	
SM	74
SW	65
SF	80
SG	39
SB	120

Long, well-muscled bull. I really like this younger son of Specialist, one of the better bulls.

EPDs Acc					Cacass EPDs Acc				
CED	Birth	Wean	Year	Milk	SC	Wt.	Marb.	Ribeye	Fat
+6	+1.1	+73	+120	+22	1+0.52	1+37	1+0.40	1+0.43	1-0.015
0.18	0.36	0.31	0.18	0.17	0.05	0.05	0.05	0.05	0.05

Dam Production: 7 BR 99,7 WR 101, 1 YR 84



### Big Dry Stellar L92

**94** Tattoo: L92 DOB: 4/29/2023 Reg. No. 20893777

Sire: Sitz Stellar 726D  
Sitz Stellar 7300  
Sitz Blackbird 3136

Dam: Connealy Cool 39L  
BDAR Queen Mother 521C  
BDAR Queen Mother 317A

BW Adj WW/Ratio Adj YW/Ratio SC  
78 687 / 112

S Values	
SM	68
SW	68
SF	86
SG	43
SB	130

A nice profiling bull out the top WW ratioing Cool daughter with WR 7/113. There is some great potential with Lot 94.

EPDs Acc					Cacass EPDs Acc				
CED	Birth	Wean	Year	Milk	SC	Wt.	Marb.	Ribeye	Fat
1+7	1+0.0	1+60	1+106	1+37	1+1.27	1+44	1+0.54	1+0.63	1+0.059
0.05	0.33	0.29	0.05	0.20	0.05	0.05	0.05	0.05	0.05

Dam Production: 7 BR 101,7 WR 113, 2 YR 112



### BDAR-BFM Logo L93

**95** Tattoo: L93 DOB: 5/1/2023 Reg. No. 20893778

Sire: SITZ Logo 12964  
Big Dry Logo H8  
BDAR Queen Mother 827F

Dam: S Jump Start 923  
BDAR-BFM Lass 150J  
BDAR Lass 882F

BW Adj WW/Ratio Adj YW/Ratio SC  
77 622 / 110

S Values	
SM	65
SW	60
SF	87
SG	43
SB	130

Born unassisted from a 1st calf heifer. Nice made H8 son with good performance.

EPDs Acc					Cacass EPDs Acc				
CED	Birth	Wean	Year	Milk	SC	Wt.	Marb.	Ribeye	Fat
+7	+1.0	+67	+115	+22	1+1.45	1+41	1+0.56	1+0.45	1+0.045
0.23	0.34	0.28	0.13	0.09	0.05	0.05	0.05	0.05	0.05



### Big Dry Specialist L94

**96** Tattoo: L94 DOB: 5/1/2023 Reg. No. 20893779

Sire: S A V Sensation 5615  
S A V Specialist 8896  
S A V Madame Pride 3304

Dam: S A V Resource 1441  
BDAR Queen Mother 842F  
BDAR Queen Mother 915W

BW Adj WW/Ratio Adj YW/Ratio SC  
84 675 / 110

S Values	
SM	79
SW	63
SF	87
SG	30
SB	117

High performing, deep sided Specialist son.

EPDs Acc					Cacass EPDs Acc				
CED	Birth	Wean	Year	Milk	SC	Wt.	Marb.	Ribeye	Fat
+6	+0.9	+68	+117	+25	1+0.67	1+38	1+0.19	1+0.69	1+0.015
0.18	0.36	0.31	0.18	0.16	0.05	0.05	0.05	0.05	0.05

Dam Production: 4 BR 99,4 WR 101, 1 YR 99



### Big Dry Bronc L95

**97** Tattoo: L95      DOB: 5/3/2023    Reg. No. 20893780

2XL Bronc 8153  
Sire: Diamond Bronc H107  
Diamond Trojan Erica 0824

S A V Specialist 8896  
Dam: BDAR Zara 039H  
BDAR Zara 202Z

BW      Adj WW/Ratio      Adj YW/Ratio      SC  
66      616 / 100

S Values	
SM	78
SW	71
SF	89
SG	57
SB	146

Heifer potential.  
Moderate framed Bronc son from a good cowline.

EPDs Acc					Cacass EPDs Acc				
CED	Birth	Wean	Year	Milk	SC	Wt.	Marb.	Ribeye	Fat
+11	-1.1	+70	+123	+29	I+0.62	I+53	I+0.71	I+0.74	I+0.013
0.18	0.35	0.29	0.14	0.11	0.05	0.05	0.05	0.05	0.05



### Big Dry Bronc L96

**98** Tattoo: L96      DOB: 5/13/2023    Reg. No. 20893781

2XL Bronc 8153  
Sire: Diamond Bronc H107  
Diamond Trojan Erica 0824

S A V Recharge 3436  
Dam: BDAR Queen Mother 637D  
BDAR Queen Mother 937W

BW      Adj WW/Ratio      Adj YW/Ratio      SC  
87      623 / 102

S Values	
SM	70
SW	67
SF	74
SG	46
SB	119

Recommended for cows. Bronc's have great vigor at birth.

EPDs Acc					Cacass EPDs Acc				
CED	Birth	Wean	Year	Milk	SC	Wt.	Marb.	Ribeye	Fat
I+6	I+2.3	I+67	I+112	I+28	I+1.07	I+40	I+0.54	I+0.64	I+0.029
0.05	0.34	0.32	0.05	0.20	0.05	0.05	0.05	0.05	0.05



### Big Dry-JDM Specialist L97

**99** Tattoo: L97      DOB: 5/28/2023    Reg. No. 20893782

S A V Sensation 5615  
Sire: S A V Specialist 8896  
S A V Madame Pride 3304

S A V Cutting Edge 4857  
Dam: S A V Madame Pride 6212  
S A V Madame Pride 3145

BW      Adj WW/Ratio      Adj YW/Ratio      SC  
84      673 / 110

S Values	
SM	52
SW	53
SF	107
SG	28
SB	135

The donor 6212 natural calf. Packed with performance and an unmatched phenotype. A great bull to end the sale with.

EPDs Acc					Cacass EPDs Acc				
CED	Birth	Wean	Year	Milk	SC	Wt.	Marb.	Ribeye	Fat
-2	+3.8	+78	+141	+20	I+0.62	I+52	I+0.20	I+0.47	I+0.003
0.18	0.37	0.32	0.19	0.17	0.05	0.05	0.05	0.05	0.05

**Thank you for your friendship and continued support of our program. Please join us at Sam and Jeff's for Eugene's Pizza, snacks, libations and visiting.**

**SAVE THE DATE !!**

**We are looking forward to our 37th Annual Sale on April 17, 2025.**

**The McRae Families of Big Dry Angus Ranch.**



Ben, John, Charlie with Pep and Lulu



Governor and Susan Gianforte stopped at the Big Dry for supper this summer, we served CAB Steaks



The Governor and Jack and Scott Ross



Governor and Susan Gianforte with Judd and Eva Twitchell

# MAKE YOUR CATTLE STAND OUT



You've made a significant investment in your genetics, but does the market recognize that? Stand out by differentiating our cattle with AngusLink<sup>SM</sup> programs: the Genetic Merit Scorecard<sup>SM</sup> and AngusVerified<sup>SM</sup>.

ANGUSLINK<sup>SM</sup>  
**GENETIC  
MERIT**  
SCORECARD<sup>SM</sup>

The Genetic Merit Scorecard gives buyers the confidence they need to pay more for your quality calves.

**ANGUS**  
**VERIFIED**<sup>SM</sup>

AngusVerified validates your calves are sired by registered Angus bulls and make your cattle stand apart from other black hides on sale day.

Users of AngusLink programs earn **\$13-15/CWT PREMIUMS** on average. Give us a call, and learn how to claim your competitive edge with AngusLink value-added programs.

**ANGUSLINK**<sup>SM</sup>  
VALUE ADDED PROGRAMS

**ANGUSLINK.COM | 816-383-5100**

The Genetic Merit Scorecard and AngusVerified are administered by IMI Global.



**Notes**

## Herd Health, Vaccinations and Feeding

Our belief that it is better to prevent or reduce sickness through vaccinations and proper supplementation of vitamins and minerals. Our vaccination program is recommended by our Veterinarian.

Birth: All calves receive a clostridial and Multi-Min vaccination, tagged with mother's ID # and weighed.

Branding: Boostered with clostridial, as well as vaccinated with Bov-Shield 5 Gold, and Nasalgen. DNA samples are taken on all calves for parentage and genetic trait testing,

Pre-Conditioning: Bovi-Shield Gold One-Shot, clostridial, Nasalgen, pour-on wormer/fly control.

Weaning and wintering of calves: All calves are wintered on the ranch, all calves are weighed, fed free-choice chopped grass hay, put on Cattle Kandi tubs.

At weaning and throughout the winter the bulls and heifers are fed a chopped hay mixture of grass and alfalfa. We also add about 1/4, by volume, corn silage to increase palatability and reduce dust. All calves have access to Sweet Pro Cattle Kandi tubs, free choice Sweet-Pro mineral and Redmond salt blocks.

The bulls also are fed CHS Bull Challenger pellet, fed in bunks. We winter the bulls to grow, not fatten.

Post-weaning: Boostered with Bov-Shield Gold One Shot, Multi-Min and clostridial . Heifers are Brucellosis vaccinated. Worming and lice control is also done

Yearling: Freeze branded with their permanent ID #, receive foot rot vaccine and all bulls are fertility tested prior to sale. Replacement Heifers receive Preg-Guard Gold FP 10.

The cowherd is annually vaccinated with Preg-Guard Gold FP10 at pregnancy testing, all opens are sold. The cowherd is consistently evaluated for disposition, structural soundness, including feet and legs. Fleshing ability within our environment is also evaluated. Our Cowherd was winter supplemented with Grass, Alfalfa and Spring Triticale hay. Cow's 3 and older calve in a large pasture, while 2's are calved in closer.

Whole Herd reporting, including breeding and pregnancy records, calf birth weights, and weaning weights, allow us to objectively select replacement heifers and make informed breeding and culling decisions.

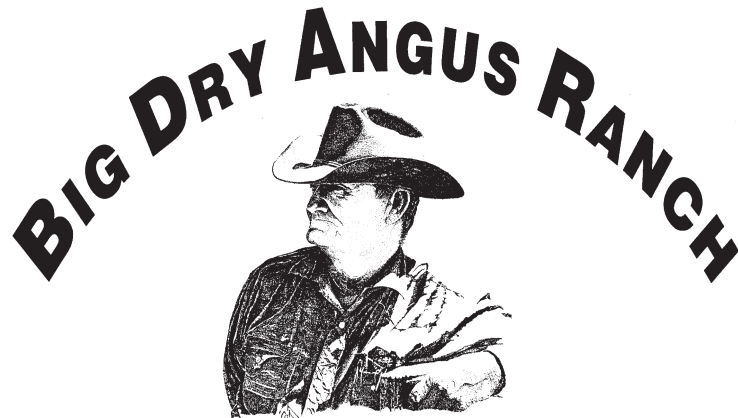
**Though we sell calves to pay the bills, the cowherd keeps us in business.**

Raising quality Angus cattle takes COMMITMENT. We take that seriously. Big Dry Angus Ranch is DEDICATED to not only improve our genetics, but also to prepare you for the future by supplying you with seed-stock that excel in traits that are economically important.

Big Dry Angus Ranch  
32 McRae Lane  
Jordan, MT 59337-9637

**ADDRESS SERVICE REQUESTED**

**36th Annual McRae's Production Auction  
Thursday, April 18 @ Glasgow Stockyards Inc.**



[www.bigdryangus.com](http://www.bigdryangus.com)