

PETTERSON GRAIN & CATTLE

Selling 53 Yearling Angus Bulls
12 Yearling Angus Open Heifers

March 27, 2024

Andee 406.945.2717 • Kim 406.945.0544 • Casey 406.945.1355



Sale Facility

32116 Road 230 N • Havre, MT 59501

PetersonGrainandCattle.com



18211 Rd 325 N • Havre, MT 59501

PetersonGrainandCattle.com

Andee 406.945.2717 • Kim 406.945.0544 • Casey 406.945.1355

What a strange couple of years we have had, with the persisting drought that unfortunately led to a lot of cattle leaving the neighborhood, then on to seeing higher calf prices with some much needed moisture helping some folks to start to recover! God has blessed us with a milder winter, we hope everyone could take some time to enjoy life after the stresses of the last couple years. We hope you all are doing well and everything is moving forward for the better at your ranches! Thank you as always for taking time to check out our bulls and replacement heifers.

Kim and Nola will celebrate their 40th anniversary a few days after the bull sale this year! What a legacy they have built together and are still building! Nola always has a hot meal ready for anyone and everyone along with handling all the never-ending paperwork that comes with this lifestyle. She keeps everyone organized and still manages to find time to sit on the baler, rake or moving equipment from one field to the next. Kim is still one of the most passionate people about agriculture and the ANGUS breed regardless of the years that have passed. He does all of the day to day work whether it is feeding, equipment maintenance, fencing or running the business.

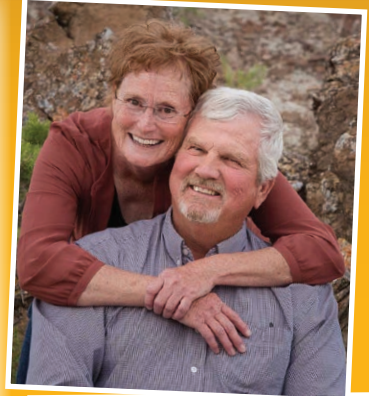
Chancin, Casey, and Cate are busy as always running their commercial herd south of Havre. A herd that Chancin spent a lifetime building with his parents, Ted and Gail Solomon. The majority of the herd bulls they have used in the last decade are PGC bulls. This is a great representation of how the bulls, their calves and replacement females perform in a commercial environment. This year, along with help from family & friends, they built a new facility at their place to continue building their veterinary & embryo transfer business, Milk River Reproduction.

Richie, Andee, Colt, Crue and Emeree are running their Registered Angus cattle in Cut Bank during the fall and winter alongside their Registered Simmental cattle and Richie's original cross bred commercial herd that he started building in 2006. The commercial herd goes back to Hereford cattle and is now strongly Simmental and Angus influenced. Richie and Andee built their own feed lot this fall in Cut Bank to feed their Registered Angus and Registered Simmental bulls and replacement heifers.

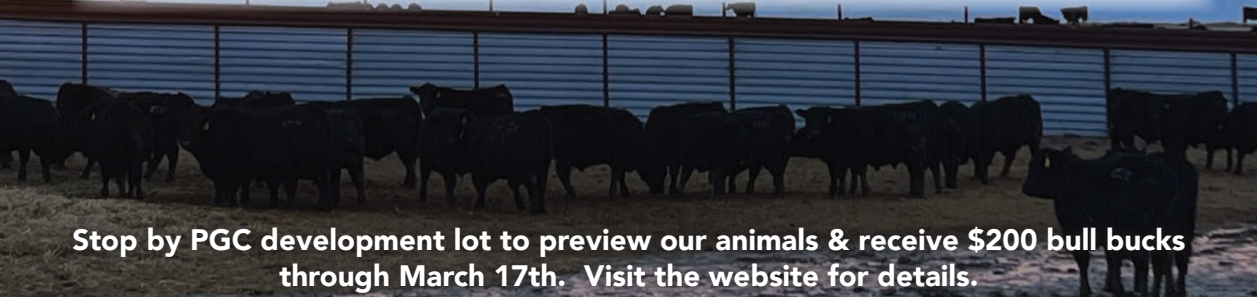
Ben is continually building on the farming operation and helping with the cattle side of things whenever needed. He crops wheat, peas, and mustard most years and also winter/spring wheat forages that support the cattle operation. He does a great job of managing the farm and is much appreciated for always being available to help wherever needed.

This year saw grass recovering from years of drought, and a really nice hay crop. Like everyone we battled flies this summer, reducing our weaning weights. Our mother cows, proved to be resilient as ever, with a 5% open rate in a 50 day window. We cut deep and selected our very top end for our bull offering and they have proven to be stylish, trouble free, and fun to be around. We continue to feed these bulls for soundness & longevity. Kim & Nola and Chancin & Casey's bulls were fed at PGC on home raised forages as well as locally sourced pea screenings, corn, and a full Hubbard mineral pack. Richie & Andee's bulls were fed in Cut Bank at the new Laverdure Ranch feedlot on free choice home raised long stem hay and a Hubbard Blueprint pellet with a full mineral pack. We are thankful for the help we receive from Josh Stroh at Hubbard Feeds to build a balanced ration.

We are continuing to offer our returning customer discount at 4% for anyone who purchased a bull in the 2023 PGC sale. We also will still be giving a volume buyer discount of 4% to customers purchasing 3 or more bulls. We invite you to our pre-sale viewing, all day Tuesday, March 26th, at the sale facility. You can also view them online at Northern Livestock Video Auction.



Stop by PGC development lot to preview our animals & receive \$200 bull bucks through March 17th. Visit the website for details.





March 27, 2024 1:00

Auctioneer Kyle Shobe..... 406-366-0472

Representatives

Kurt Kangas, *American Angus Assoc.*..... 406-366-4190
Matt Wznick, *Western Ag Reporter* 406-489-2414
Devin Murnin, *Western Livestock Journal*..... 406-696-1502
Bo Bevis, *Northern Livestock Video Auction* 406-390-3134

Sale Location 32116 Rd 230 N • Havre, MT 59501. See map page 28.

Inspection of Cattle All cattle will be available for inspection March 26 at the sale facility, 32116 Road 230 N, Havre MT. Prior to that the bulls will be at the Peterson Grain & Cattle development center, 18211 Road 325 N, Havre MT.

Sight Unseen Purchase Guarantee Buyers unable to attend the sale may call anyone from PGC or any of our representatives. Let us know your bull needs and your budget range. We'll bid on and purchase the best cattle possible for your specifications. We'll let you know of cattle purchased following the sale and make payment arrangements with you. If you aren't satisfied upon delivery, you don't own the bull(s).

Videos Scan the QR code in this catalog with your smart phone to go directly to the video of each Lot.

Health & Performance All bulls sell with complete performance test information including scrotal measurements. All bulls have been semen tested by Casey Solomon, DVM, Milk River Reproduction and Steven Hjartarson, Northern Veterinary Clinic. All bulls have received Fusoguard, BoviShield Gold FP5 VL5, pour on, Multi Min and have tested negative for BVD. The individual results will be included with their other paperwork upon your purchase.

Genomic Enhanced EPDs All of the bulls in the sale offering have AngusGS DNA testing to increase EPD accuracies and predictability. This test is a tool to enhance selection and predict genetic potential. EPDs are current as of 2/29/24. Updated EPDs are available at Angus.org

Retained Interest Peterson Grain & Cattle is retaining a 1/3 revenue share interest on all bulls selling in the sale, unless otherwise announced from the block. Natural use and salvage belongs to the buyer. If we choose to collect semen from a bull that you have purchased, we will have it done at your convenience and at our expense.

Terms & Conditions All cattle sell according to the standard terms and conditions of the American Angus Association.

Delivery/Hauling Rebate Free delivery in Montana. Beyond Montana delivery will be at actual cost. Delivery out of state available, call for arrangements. If you bring your trailer to the sale, a \$40 rebate will be returned to you after sale settlement for bulls you haul home on sale day.

Volume Discounts Returning buyers from our 2022 sale will receive a 4% discount. Buyers purchasing 3 or more bulls will also receive 4%.

Insurance will NOT be available sale day.

First Year Breeding Guarantee All bulls selling for \$3500 or more will be covered 50% by PGC if they are injured during their first breeding season if you contact PGC immediately following the injury. This guarantee does not include death as that can be insured for. Breeding season is defined as a 60 day period following the first turnout of bulls. A 50% credit minus the salvage value will be given for the following year's sale OR towards a replacement bull from PGC, if available. A proof of sale/salvage value and veterinary statement will be required to fulfill guarantee. Insurance does offer the best protection, even though it is NOT available on sale day we can give you contact information to fit your needs.

Liability All persons attending this sale do so at their own risk, legal or otherwise for their safety or the behavior of the animals. The owners, auction service and sale staff assume no liability for property loss or any accidents that may occur.

Announcements from the block will take precedence over the catalog.

Accommodations

Best Western Great Northern Inn 406-265-4200
Best Western Plus Havre Inn & Suites..... 406-265-2888
Super 8, Havre..... 406-265-1411
Americinn, Havre..... 406-395-5000
Cape Air 1-800-CAPE-AIR

Lunch Complimentary CAB lunch served at 11:30 am. Please join us for lunch and look over the bulls on sale morning.



Bid through Northern Livestock Video Auction's NEW Online Bidding Platform!

Desktop

1. It is best to use the Google Chrome web browser.
2. **Pre-Register at least one day prior to the sale.**
3. Go to **bid.NorthernLivestockVideo.com** and click "Get Approved to Bid".
4. Doing this will prompt you to create an account, after which you will fill out a bidder approval application.
5. Once Approved, an email will be sent to the email account provided, please click the link in that email to activate your account and a buyer number will be provided.
6. On sale day (after approval), visit **www.NorthernLivestockVideo.com** to view and bid!

Mobile

Use your mobile device to download the Northern Livestock Auction App and follow the above steps to get approved. There is an instructional video on how to register to bid on our website **www.NorthernLivestockVideo.com**

Phone Bidding

Anyone wanting to use the Northern Livestock phone bank to bid must pre-register and have a bid number to bid on the phone. **To register with NLVA call 866-616-5035 Before Sale Day.**

Northern's Sale Day Bid Line: **1-406-245-0889**

View the Online CATALOG and VIDEO CLIP of each BULL selling at **www.NorthernLivestockVideo.com** Scan the QR code in this catalog with your smart phone to go directly to the video of each Lot.

Successful bidders making purchases will be contacted following the sale for payment and delivery arrangements.

For technical assistance with Internet Viewing and Bidding Questions, call Sam Fraser 406-860-0590.



Sitz Stellar 726D

Bull Born: 01/23/16 Reg Number: 18397542 Tattoo: 726D

BENFIELD SUBSTANCE 8506# H A IMAGE MAKER 0415#
 MOHNNEN SUBSTANTIAL 272# BENFIELD EDELLA 1105
 MOHNNEN GLYN MAWR ELBA 1758 LT TERRITORY 5824 OF EA#
 MOHNNEN GLYN MAWR ELBA 1345

CONNEALY FINAL PRODUCT# CONNEALY PRODUCT 568
 SITZ PRIDE 200B EBONISTA OF CONANGA 471#
 SITZ PRIDE 308Y# SITZ UPWARD 307R#
 SITZ PRIDE 44P#

CED	BW	WW	YW	HP	MILK	\$EN
+6	-0.2	+69	+125	+7.0	+17	-18
Marb EPD	REA EPD	Fat EPD	\$M	\$W	\$B	\$C
+0.64	+0.41	+0.062	+52	+64	+138	+231

Sitz Stellar 726D



Woodhill Blueprint

Bull Born: 02/10/17 Reg Number: #18876777 Tattoo: E60

CONNEALY CONFIDENCE 0100# CONNEALY TOBIN
 CONNEALY CONFIDENCE PLUS# BECKA GALA OF CONANGA 8281
 ELBANNA OF CONANGA 1209 CONNEALY CONSENSUS#
 ELBASTA OF CONANGA 9703

TEHAMA SIERRA CUT Z118 D R SIERRA CUT 7404#
 WOODHILL EVERGREEN Z291-B233 TEHAMA ECHO X315#
 WOODHILL EVERGREEN U6-Z291 SYDGEN C C & 7#
 WOODHILL EVERGREEN S28-U6

CED	BW	WW	YW	HP	MILK	\$EN
+8	+0.7	+69	+124	+9.2	+32	-26
Marb EPD	REA EPD	Fat EPD	\$M	\$W	\$B	\$C
+0.68	+1.00	+0.012	+51	+75	+163	+262

Woodhill Blueprint



Square B True North 8052

Bull Born: 08/16/18 Reg Number: +19405246 Tattoo: 8052

COLEMAN CHARLO 0256# O C C PAXTON 730P#
 S A V RAINFALL 6846 BOHI ABIGALE 6014
 S A V BLACKCAP MAY 4136 S A V 8180 TRAVELER 004#
 S A V MAY 2397#

CONNEALY CONSENSUS# KMK ALLIANCE 6595 I87#
 ELBANNA OF CONANGA 1209 BLINDA OF CONANGA 004
 ELBASTA OF CONANGA 9703 CONNEALY FORWARD#
 ELBA OF CONANGA 3761#

CED	BW	WW	YW	HP	MILK	\$EN
+15	-2.0	+56	+106	+7.5	+36	+7
Marb EPD	REA EPD	Fat EPD	\$M	\$W	\$B	\$C
+1.08	+0.68	+0.052	+81	+70	+150	+276

Square B True North 8052



PGC Forge

Bull Born: 02/15/18 Reg Number: 19230832 Tattoo: 8075

S A V FINAL ANSWER 0035# SITZ TRAVELER 8180#
 CONNEALY CAPITALIST 028# S A V EMULOUS 8145
 PRIDES PITA OF CONANGA 8821 C R A BEXTOR 872 5205 608#
 PRIDES TRAV OF CONANGA 6499

SITZ UPSIDE 547W# SITZ UPWARD 307R#
 PGC SHOESHONE GIRL 4106# SITZ EMMA 27T
 PGC SHOSHONE GIRL 0229# PGC MAGNITUDE 8060
 D C M SHOSHONE 518 572#

CED	BW	WW	YW	HP	MILK	\$EN
+2	+4.2	+76	+126	+13.6	+19	-25
Marb EPD	REA EPD	Fat EPD	\$M	\$W	\$B	\$C
+0.36	+0.43	-0.005	+64	+56	+134	+238

PGC Forge



Reference Sire **Sitz Barricade 632F**
 Bull Born: 02/01/18 Reg Number: 19078148 Tattoo: 632F
 MOHNEN SUBSTANTIAL 272# BENFIELD SUBSTANCE 8506#
SITZ STELLAR 726D MOHNEN GLYN MAWR ELBA 1758
 SITZ PRIDE 200B CONNEALY FINAL PRODUCT#
 SITZ PRIDE 308Y#
 SITZ SUPERIOR 10971 GDAR GAME DAY 449#
SITZ BARBARAMERE NELL 765D SITZ RLS EISA EVERGREEN 5279
 SITZ BARBARAMERE NELL 73T SITZ NEW DESIGN 458N#
 SITZ BARBARAMERE NELL 109R

CED	BW	WW	YW	HP	MILK	\$EN
+1	+4.1	+82	+139	+17.1	+15	-24
Marb EPD	REA EPD	Fat EPD	\$M	\$W	\$B	\$C
+0.75	+0.59	+0.078	+74	+56	+170	+294

Sitz Barricade 632F



Reference Sire **Circle L Boone**
 Bull Born: 11/24/19 Reg Number: +19878187 Tattoo: 8G8
 CONNEALY CONFIDENCE 0100# CONNEALY TOBIN
CONNEALY CONFIDENCE PLUS# BECKA GALA OF CONANGA 8281
 ELBASTA OF CONANGA 1209 CONNEALY CONSENSUS#
 ELBASTA OF CONANGA 9703
 EXAR DENVER 2002B# EXAR UPSHOT 0562B#
RB LADY DENVER 167-428 EXAR ROYAL LASS 1067
 R B LADY PARTY 167-305 WERNER WAR PARTY 2417#
 B A LADY 6807 305

CED	BW	WW	YW	HP	MILK	\$EN
-2	+4.6	+78	+131	+12.3	+21	-18
Marb EPD	REA EPD	Fat EPD	\$M	\$W	\$B	\$C
+0.82	+0.98	+0.028	+73	+60	+167	+290

Circle L Boone



Reference Sire **PGC Authentic 0087**
 Bull Born: 02/17/20 Reg Number: 19846565 Tattoo: 0087
 MOHNEN SUBSTANTIAL 272# BENFIELD SUBSTANCE 8506#
SITZ STELLAR 726D MOHNEN GLYN MAWR ELBA 1758
 SITZ PRIDE 200B CONNEALY FINAL PRODUCT#
 SITZ PRIDE 308Y#
 JANSSEN WYATT EARP 5110 S A V RESOURCE 1441#
PGC MISS EXPAND 663-8116# S A V MADAME PRIDE 8827
 PGC MISS EXPAND 663-2054 SITZ UPSIDE 547W#
 PGC EXPAND 663#

CED	BW	WW	YW	HP	MILK	\$EN
+7	+1.1	+63	+122	+10.6	+20	-11
Marb EPD	REA EPD	Fat EPD	\$M	\$W	\$B	\$C
+0.47	+0.34	+0.039	+69	+54	+123	+229

PGC Authentic 0087



Reference Sire **PGC Playbook 916**
 Bull Born: 02/13/19 Reg Number: 19590550 Tattoo: 916
 BASIN PAYWEIGHT 1682# BASIN PAYWEIGHT 006S#
TEX PLAYBOOK 5437 21AR O LASS 7017
 RITA 1C43 OF 9M26 COMPLETE SUMMITCREST COMPLETE 1P55#
 RITA 9M26 OF RITA 5F56 PRED
 TOP NOTCH BIG BUD MYTTY IN FOCUS#
ABP ELINE 230 TOP NOTCH RAZZI GIRL 2704#
 LEACHMAN ELINE 1058 LEACHMAN BOOM TIME#
 LEACHMAN ELINE 8065

CED	BW	WW	YW	HP	MILK	\$EN
+10	+0.6	+64	+112	+14.6	+37	-10
Marb EPD	REA EPD	Fat EPD	\$M	\$W	\$B	\$C
+0.52	+0.33	-0.003	+82	+74	+131	+252

Reference Sire **PGC Broken Bow 9048**
 Bull Born: 02/12/19 Reg Number: 19592603 Tattoo: 9048
 SUMMITCREST COMPLETE 1P55# C F RIGHT DESIGN 1802#
KM BROKEN BOW 002# SUMMITCREST ELBA 1M17
 SUMMITCREST PRINCESS 0P12# BASIN AMBUSH 8161
 SUMMITCREST PRINCESS 2J10#
 H A IMAGE MAKER 0415# HERO 6267 OF R R 2418#
PGC ALLIANCE LADY 7032 H A RITO BLACKCAP 9038
 TOP NOTCH ALLIANCE LADY 1204 SITZ ALLIANCE 6595#
 AHLGRENS BETTY N LANDER 3993

CED	BW	WW	YW	HP	MILK	\$EN
+4	+0.6	+70	+118	+9.7	+31	-30
Marb EPD	REA EPD	Fat EPD	\$M	\$W	\$B	\$C
+0.91	+0.73	+0.007	+55	+71	+161	+264

Myers Fair-N-Square M39

Reference Sire Bull Born: 01/07/19 Reg Number: 19418329 Tattoo: M39

CONNEALY CONFIDENCE PLUS# CONNEALY CONFIDENCE 0100#
WOODHILL BLUEPRINT# ELBANNA OF CONANGA 1209
 WOODHILL EVERGREEN Z291-B233 TEHAMA SIERRA CUT Z118
 WOODHILL EVERGREEN U6-Z291
 CONNEALY THUNDER# BALDRIDGE KABOOM K243 KCF#
MYERS MISS BEAUTY M136 PARKA OF CONANGA 241#
 MYERS MISS BEAUTY M476# CONNEALY ONWARD#
 MYERS MISS BEAUTY M384#

CED	BW	WW	YW	HP	MILK	SEN
+3	+2.1	+73	+125	+12.3	+21	-13
Marb EPD	REA EPD	Fat EPD	\$M	\$W	\$B	\$C
+90	+70	+0.22	+71	+64	+164	+284



Reference Sire Bull Born: 02/07/21 Reg Number: 20198713 Tattoo: 104

CONNEALY CONFIDENCE PLUS# CONNEALY CONFIDENCE 0100#
WOODHILL BLUEPRINT# ELBANNA OF CONANGA 1209
 WOODHILL EVERGREEN Z291-B233 TEHAMA SIERRA CUT Z118
 WOODHILL EVERGREEN U6-Z291
 MILL BAR HICKOK 7242# CONNEALY CONSENSUS 7229#
ABP MEATPACKIN MAMA 901 MILL BAR BEMINDFUL MAID 6304
 TOPNOTCH MEATPACKIN MAMA 310 S A V BISMARCK 5682#
 TOP NOTCH MEATPACKIN MAMA 52

CED	BW	WW	YW	HP	MILK	SEN
+5	+3.5	+90	+147	+8.4	+28	-30
Marb EPD	REA EPD	Fat EPD	\$M	\$W	\$B	\$C
+94	+87	+0.27	+71	+81	+162	+281



Reference Sire Bull Born: 02/04/18 Reg Number: 19205135 Tattoo: 8010

HF KODIAK 5R SANDY BAR ADVANTAGE 43M
SOO LINE MOTIVE 9016# WILBAR RUBY 955N
 TLA BEAUTY 5R RR 7407 RAINMAKER 2154
 TERRLENE BEAUTY 35F
 CAR EFFICIENT 534# K C F BENNETT EFFICIENT
PGC MS EXT 3100 CAR MISS SUSIE 308#
 PGC EXT 677 MYTTY IN FOCUS#
 PGC EXT 352

CED	BW	WW	YW	HP	MILK	SEN
+11	-1.1	+50	+90	+11.8	+24	+9
Marb EPD	REA EPD	Fat EPD	\$M	\$W	\$B	\$C
+56	+17	+0.42	+72	+55	+109	+213



Created by Angus Genetics Inc. (AGI) and powered by Neogen GeneSeek, our sale cattle have been tested with the first DNA profile designed specifically for Angus cattle, Angus GSSM.

Each marker is intentionally chosen from the Angus genome to drive the Angus breed into the future. It offers maximum accuracy for genomically enhanced EPDs at great value. Testing heifer and bull calves ultimately allows you to reap the benefits of faster genetic gain in your commercial herd. With Angus GS, it's all about you, our customer.

Trait	Progeny Equivalents
Calving Ease Direct (CED)	26
Birth Weight (BW)	23
Weaning Weight (WW)	27
Yearling Weight (YW)	23
Dry Matter Intake (DMI)	12
Yearling height (YH)	17
Scrotal Circumference (SC)	15
Docility (DOC)	12
Claw Set (CLAW)	10
Foot Angle (ANGLE)	10
Heifer Pregnancy (HP)	17
Calving Ease Maternal (CEM)	20
Milk	36
Mature Weight (MW)	15
Mature Height (MH)	9
Carcass Weight (CW)	15
Carcass Marbling (MARB)	11
Carcass Ribeye (RE)	17
Carcass Fat (FAT)	14



Make Angus GS work for you at Angus.org/AGI/AngusGS or contact your Neogen GeneSeek representative at (402) 435-0665.





PGC Forge 3099

Bull Born: 02/20/23 Reg: 20804299 Tattoo: 3099

CONNEALY CAPITALIST 028#

PGC FORGE

PGC SHOESHONE GIRL 4106#

PA POWER TOOL 9108#

PGC RALLY 7065

PGC RALLY 1047#

S A V FINAL ANSWER 0035#

PRIDES PITA OF CONANGA 8821

SITZ UPSIDE 547W#

PGC SHOSHONE GIRL 0229#

G A R PREDESTINED#

SHAMROCKS BEEBEE QUEEN 3095

HOOVER DAM#

PGC RALLY 7070

ANGUS

Claw Set

6

Foot Angle

6

Calving Ease	Birth Wt	Act Wn Wt	WW Ratio	365 Wt	YW Ratio	Adj Scrotal	Dam Production
★★	94	692	104	1161	111	39.0	4 WR 108
CED	BW	WW	YW	HP	MILK	SEN	
+2	+2.9	+70	+125	+12.9	+23	-25	
Marb EPD	REA EPD	Fat EPD	\$M	\$W	\$B	\$C	
+0.88	+0.79	-0.032	+0.57	+0.57	+1.64	+2.70	

Our lead off bull was the Open Corral favorite, a stylish bull that has been a standout since birth. Dam is a rock solid reliable Power Tool cow - 4 BW @ 83#, 4 WR @ 108, 4 YR @ 109 with a 370 calving interval. She has raised two replacement females for the PGC herd and a full brother to Lot 1, that sold to Nick & Shandell Briese in 2022. Granddam posts 9 BW @ 75#, WR @ 101, with a 364 day calving interval. Ranks in the top 35% for WW, YW, MW, RE, & \$C and the top 25% or better for SC, Claw (15%), PAP, HS (10%), Fat (10%), \$G (20%).



VIDEO

PGC Stellar 3507

Bull Born: 02/06/23 Reg: 20804317 Tattoo: 3507

MOHNEN SUBSTANTIAL 272#

SITZ STELLAR 726D#

SITZ PRIDE 200B

BDAR COOL C65

CP NEW DESIGN 1523

CP NEW DESIGN 7509

BENFIELD SUBSTANCE 8506#

MOHNEN GLYN MAWR ELBA 1758

CONNEALY FINAL PRODUCT#

SITZ PRIDE 308Y#

CONNEALY COOL 39L#

BDAR PRIDE 227Z#

CAR MOTIVE 512

CP NEW DESIGN 5504

ANGUS

Claw Set

5

Foot Angle

6

Calving Ease	Birth Wt	Act Wn Wt	WW Ratio	365 Wt	YW Ratio	Adj Scrotal	Dam Production
★★★	78	729	117	1179	113	36.6	1 WR 117
CED	BW	WW	YW	HP	MILK	SEN	
+6	+1.7	+80	+138	+15.4	+19	-34	
Marb EPD	REA EPD	Fat EPD	\$M	\$W	\$B	\$C	
+0.66	+0.61	+0.070	+0.63	+0.65	+1.57	+2.67	

Lot 2 is an attractive Stellar with lots of capacity. He posted the 4th highest WW this fall. His dam is a promising young cow out of our prolific herd sire BDAR Cool C65. His granddam posts 4 BW @ 82#, and 4 WR @ 101. He is a calving ease cow bull with a balanced number profile - ranking in the top 15% or better for WW (10%), YW, SC, MW, MH (10%), Claw (4%), Angle (10%), PAP (5%), CW, and \$F and in the top 35% for YH, HS, \$B, \$W, and \$C.



VIDEO





PGC Stellar 323

3

Bull Born: 02/12/23 Reg: 20804311 Tattoo: 323

MOHNEN SUBSTANTIAL 272#
SITZ STELLAR 726D#
 SITZ PRIDE 200B

BENFIELD SUBSTANCE 8506#
 MOHNEN GLYN MAWR ELBA 1758
 CONNEALY FINAL PRODUCT#
 SITZ PRIDE 308Y#

ANGUS CS

Claw Set
 Foot Angle

WOODHILL BLUEPRINT#
ABP ELINE 114
 ABP ELINE 931#

CONNEALY CONFIDENCE PLUS#
 WOODHILL EVERGREEN Z291-B233
 BDAR COOL C65
 ABP ELINE 526#

Calving Ease	Birth Wt	Act Wn Wt	WW Ratio	365 Wt	YW Ratio	Adj Scrotal	Dam Production
★★	84	697	119	1222	117		1 WR 119
CED	BW	WW	YW	HP	MILK		SEN
-1	+3.3	+86	+150	+17.5	+15		-36
Marb EPD	REA EPD	Fat EPD	\$M	\$W	\$B		\$C
+0.39	+0.75	+0.007	+63	+60	+145		+251

This bull was a favorite at open corral. He has the look and style of a herd sire with a 205 day weight of 712 lbs. Rock sold cow family backs this bull. FED @ Laverdure Ranch.



Bull Videos available at
www.NorthernLivestockVideo.com
 with a direct link to each Lot by
 scanning their QR Code in this book.

Laverdure Ranch





PGC Blueprint 3052



Bull Born: 02/11/23 Reg: 20806993 Tattoo: 3052

CONNEALY CONFIDENCE PLUS#
WOODHILL BLUEPRINT#
 WOODHILL EVERGREEN Z291-B233

CONNEALY CONFIDENCE 0100#
 ELBANNA OF CONANGA 1209
 TEHAMA SIERRA CUT Z118
 WOODHILL EVERGREEN U6-Z291

ANGUS

Claw Set
5
 Foot
 Angle
6

TEX PLAYBOOK 5437#
PGC ALLIANCE LADY 9086#
 PGC ALLIANCE LADY 3023

BASIN PAYWEIGHT 1682#
 RITA 1C43 OF 9M26 COMPLETE
 V D A R REALLY WINDY 4097#
 PGC ALLIANCE LADY 1028

A thick and correct bull, that has impressed all year - posting the highest weaning weight this last fall. His dam is a quiet and attractive Playbook cow, easy fleshing with added bone and good feet - she posts 3 BW @ 79#, 3 WR @ 107, 3 YR @ 103 with a 366 day calving interval. His full sister sold to Rick Sampsen in our 2023 sale. Granddam was a reliable cow in the PGC herd posting 8 WR @ 100. He ranks in the top 35% of the breed for CED, WW (15%), YW (20%), SC (4%), Milk (5%), MW, MH (30%), Doc (15%), Claw (30%), Angle (20%), CW, \$M, \$W (3%).

Calving Ease	Birth Wt	Act Wn Wt	WW Ratio	365 Wt	YW Ratio	Adj Scrotal	Dam Production
★★★	86	810	121	1135	108	35.9	3 WR 107
CED	BW	WW	YW	HP	MILK	SEN	
+8	+1.6	+79	+129	+11.5	+36	-30	
Marb EPD	REA EPD	Fat EPD	\$M	\$W	\$B	SC	
+0.39	+0.54	+0.066	+0.70	+0.84	+121	+227	



August 23, 2023





PGC Blueprint 3504

5 Bull Born: 02/03/23 Reg: 20804316 Tattoo: 3504

CONNEALY CONFIDENCE PLUS#
WOODHILL BLUEPRINT#
 WOODHILL EVERGREEN Z291-B233

BASIN PAYWEIGHT 1682#
CP BLACKBIRD 1544
 HOLMAN BLACKBIRD 733

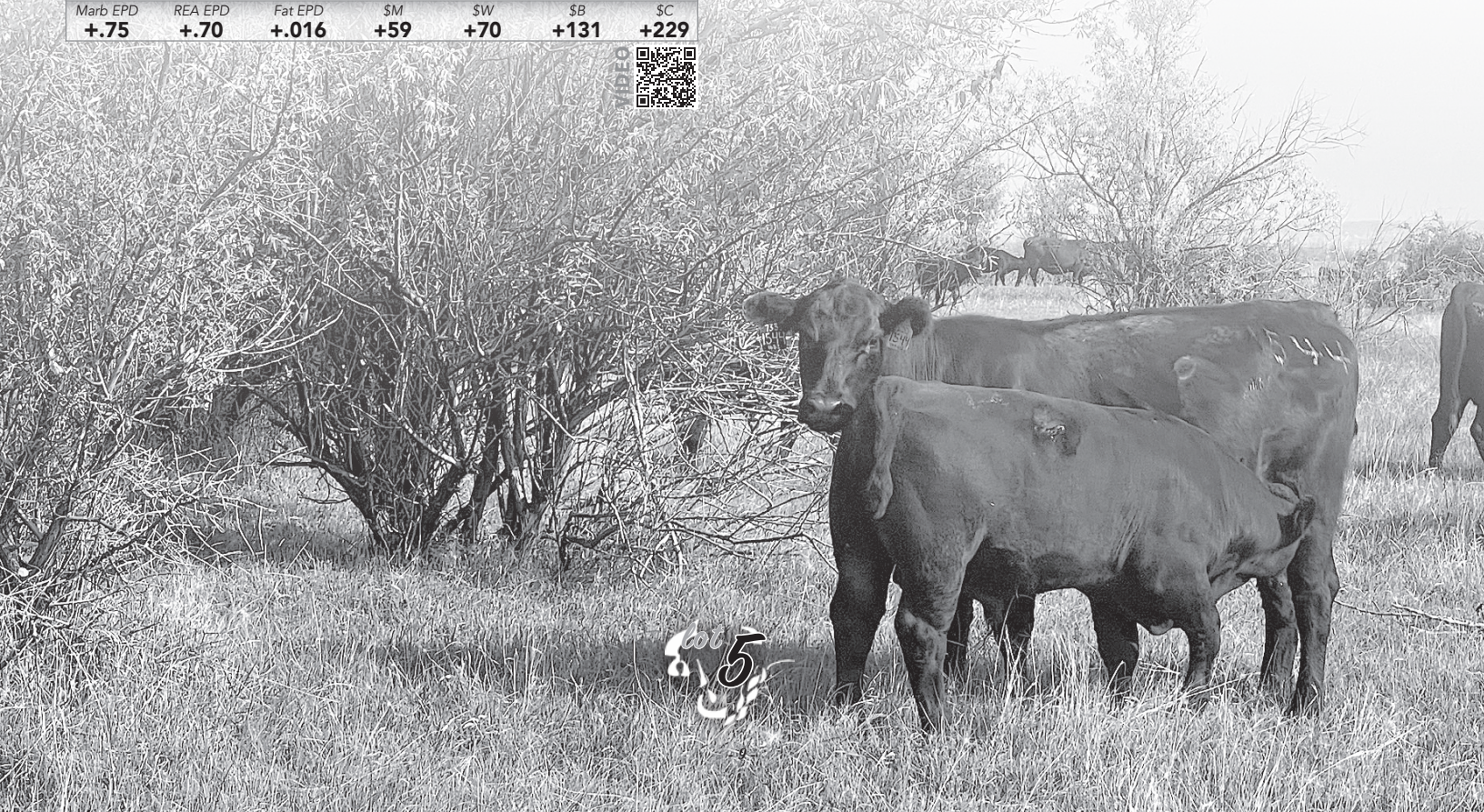
CONNEALY CONFIDENCE 0100#
 ELBANNA OF CONANGA 1209
 TEHAMA SIERRA CUT Z118
 WOODHILL EVERGREEN U6-Z291

BASIN PAYWEIGHT 006S#
 21AR O LASS 7017
 B/R NEW FRONTIER 095#
 C A MISS SKY C191

ANGUS
 Claw Set
5
 Foot
 Angle
6

Calving Ease	Birth Wt	Act Wn Wt	WW Ratio	365 Wt	YW Ratio	Adj Scrotal	Dam Production
★★★★	74	704	112	1037	99	36.5	1 WR 112
CED	BW	WW	YW	HP	MILK	SEN	
+9	+0.4	+64	+104	+8.8	+30	-14	
Marb EPD	REA EPD	Fat EPD	\$M	\$W	\$B	\$C	
+0.75	+0.70	+0.016	+59	+70	+131	+229	

Lot 5 is a heifer bull out of Woodhill Blueprint. He was a standout all summer, a favorite Blueprint on the River. Dam is an exciting young cow, a Basin Payweight 1682 out of the great Blackbird 733 donor cow - 4 sisters in production are 100% conception in the first 20 days of the calving interval for 2 years running. Granddam posts 33 BW @ 86#, 33 WW @ 722# - calves raised at side or on recipients in our commercial cattle herd, managed the same as our commercial calves. This bull has the look and pedigree for longevity, fertility and functional replacement mother cows.





PGC True North 316

6

Bull Born: 02/08/23 Reg: 20804309 Tattoo: 316

S A V RAINFALL 6846
SQUARE B TRUE NORTH 8052
 ELBANNA OF CONANGA 1209



BDAR COOL C65
ABP ELINE 037
 ABP ELINE 526#

COLEMAN CHARLO 0256#
 S A V BLACKCAP MAY 4136
 CONNEALY CONSENSUS#
 ELBASTA OF CONANGA 9703
 CONNEALY COOL 39L#
 BDAR PRIDE 227Z#
 KEL MCC UPWARD 8383 2308
 ABP ELINE 230

ANGUS GS

Claw Set
 Foot
 Angle

Calving Ease	Birth Wt	Act Wn Wt	WW Ratio	365 Wt	YW Ratio	Adj Scrotal	Dam Production
★★★	82	702	114	1149	111		2 WR 111
CED	BW	WW	YW	HP	MILK	\$EN	
+13	-0.5	+74	+131	+11.4	+38	-27	
Marb EPD	REA EPD	Fat EPD	\$M	\$W	\$B	\$C	
+0.67	+0.82	+0.024	+66	+81	+150	+261	

Another bull you will not miss when you walk thru the pens. Shapely bull out of a rock solid cow family and a dam with a nice udder. FED @ Laverdure Ranch.



VIDEO

PGC Stellar 3020

7

Bull Born: 02/05/23 Reg: 20806986 Tattoo: 3020

MOHNEN SUBSTANTIAL 272#
SITZ STELLAR 726D#
 SITZ PRIDE 200B

SQUARE B TRUE NORTH 8052
PGC SHOESHONE GIRL 1089
 PGC SHOESHONE GIRL 4106#

BENFIELD SUBSTANCE 8506#
 MOHNEN GLYN MAWR ELBA 1758
 CONNEALY FINAL PRODUCT#
 SITZ PRIDE 308Y#
 S A V RAINFALL 6846
 ELBANNA OF CONANGA 1209
 SITZ UPSIDE 547W#
 PGC SHOESHONE GIRL 0229#

ANGUS GS

Claw Set
 Foot
 Angle

Calving Ease	Birth Wt	Act Wn Wt	WW Ratio	365 Wt	YW Ratio	Adj Scrotal	Dam Production
★★	78	735	117	1231	118	34.5	1 WR 117
CED	BW	WW	YW	HP	MILK	\$EN	
+0	+3.1	+86	+152	+8.8	+19	-26	
Marb EPD	REA EPD	Fat EPD	\$M	\$W	\$B	\$C	
+0.20	+0.58	+0.068	+59	+67	+140	+241	

The DROUGHT BUSTER! His dam was conceived in the drought, born in the drought, bred 1st cycle in the drought and produced this outstanding cow bull. They are a standout pair, with added bone, style and structure. Dam has already calved first cycle with her second calf, and remains an ideal mother with a strong potential to enter our donor cow string. Granddam is the great PGC Shoeshone 4106 donor cow. We love this bull for his phenotype and quiet composure, he will put pounds on the ground and make some nice replacement females. Ranks in the top 5% for WW, YW, Claw, HS, and the top 30% for RADG (20%), MW, MH (25%), Angle (15%), PAP (15%), CW (15%), \$F (15%), \$W (25%).



VIDEO





PGC Blueprint 3508

Bull Born: 02/05/23 Reg: 20804318 Tattoo: 3508

CONNEALY CONFIDENCE PLUS#
WOODHILL BLUEPRINT#
 WOODHILL EVERGREEN Z291-B233

CONNEALY CONFIDENCE 0100#
 ELBANNA OF CONANGA 1209
 TEHAMA SIERRA CUT Z118
 WOODHILL EVERGREEN U6-Z291

SITZ STELLAR 726D#
CP LONG GORGEOUS 0511
 PGC HUSKER 6124

MOHNEN SUBSTANTIAL 272#
 SITZ PRIDE 200B
 PGC LONG GEORGE 3116
 KEL MCC HUSKER 459 707

ANGUS
 Claw Set
5
 Foot
 Angle
5

Calving Ease	Birth Wt	Act Wn Wt	WW Ratio	365 Wt	YW Ratio	Adj Scrotal	Dam Production
★★★★	72	729	111	1152	110	34.0	2 WR 113
CED	BW	WW	YW	HP	MILK	\$EN	
+9	+0.5	+87	+152	+10.3	+31	-49	
Marb EPD	REA EPD	Fat EPD	\$M	\$W	\$B	\$C	
+0.67	+0.80	+0.057	+43	+82	+161	+252	

Lot 8 is stylish and balanced. If you are looking for a bull to make quiet, deep bodied, replacements while maintaining performance in your steer calves - this is the guy to do it. Dam and granddam are awesome momma cows, quietly do their job and take care of their calves. Dam posts 2 BW @ 70#, 2 WR @ 113, 2 YR @ 105. Lot 8 ranks in the top 35% of the Angus Breed for CED (30%), BW, WW (4%), YW (5%), RADG (20%), SC (15%), Milk (25%), MW (5%), MH (15%), PAP (25%), CW (10%), RE (30%), \$F (15%), \$B (30%), \$W (3%).



Lot 8, seven days old





PGC Stellar 325

Bull Born: 02/14/23 Reg: 20804312 Tattoo: 325

MOHNEN SUBSTANTIAL 272#
SITZ STELLAR 726D#
 SITZ PRIDE 200B

BENFIELD SUBSTANCE 8506#
 MOHNEN GLYN MAWR ELBA 1758
 CONNEALY FINAL PRODUCT#
 SITZ PRIDE 308Y#

ANGUS
Owned by Angus and/or
 Claw Set
 Foot
 Angle

KEL MCC UPWARD 8383 2308
ABP ELINE 526#
 ABP ELINE 230

SITZ UPWARD 307R#
 KEL MCC LADY KELTON 8383
 TOP NOTCH BIG BUD
 LEACHMAN ELINE 1058

Calving Ease	Birth Wt	Act Wn Wt	WW Ratio	365 Wt	YW Ratio	Adj Scrotal	Dam Production
★	98	738	115	1134	109		7 WR 110
CED	BW	WW	YW	HP	MILK	SEN	
-2	+3.9	+82	+142	+13.1	+23	-30	
Marb EPD	REA EPD	Fat EPD	\$M	\$W	\$B	\$C	
+4.6	+5.1	+0.02	+62	+65	+137	+240	

You won't miss this bull. Pathfinder Dam posts 7 calves @ 110 WR, bred back first cycle again for 2024 with a stylish TAHOE son. If you want pounds on the ground and a female maker this is your bull. COW BULL. FED @ Laverdure Ranch.



Dam of Lot 9 with her 2024 calf



Chancin & Casey Solomon, DVM

**Milk River Reproduction
 Donor Facility now open!**

*Thank you so much
 to everyone for your
 help and support!*





lot 10

PGC Forge 3034

Bull Born: 02/07/23 Reg: 20804285 Tattoo: 3034

CONNEALY CAPITALIST 028#
PGC FORGE
 PGC SHOESHONE GIRL 4106#

S A V FINAL ANSWER 0035#
 PRIDES PITA OF CONANGA 8821
 SITZ UPSIDE 547W#
 PGC SHOESHONE GIRL 0229#

ANGUS

Claw Set

5

Foot Angle

6

PGC MATRIX 5172
PGC SHOSHONE 9174
 PGC SHOSHONE 8021

A A R MATRIX 1901
 PGC BUSH LADY 2035
 MYTTY IN FOCUS#
 PGC SHOSHONE 621

Calving Ease	Birth Wt	Act Wn Wt	WW Ratio	365 Wt	YW Ratio	Adj Scrotal	Dam Production
★★	94	778	116	1102	106	34.2	2 WR 112
CED	BW	WW	YW	HP	MILK	\$EN	
-2	+4.3	+72	+115	+12.3	+30	-37	
Marb EPD	REA EPD	Fat EPD	SM	\$W	\$B	\$C	
-.12	+.43	+.015	+53	+61	+115	+202	

A favorite all summer, this cow bull has added bone, correct structure and a quiet temperament. His dam is becoming a PGC favorite, easy fleshing despite years of drought 2 WR @ 112, and an absolute sweetheart to be around. If you find her, her calf is always nearby. Pedigree is loaded with outstanding, excellent producers in our herd, including the great PGC Shoeshone 4106, PGC Bush Lady 2035 - 7 WR @ 104, and PGC Shoshone 8021 - 7 WR @ 104. Look to this bull to add performance, fertility, maternal traits and structure.



Lot 10, eight days old

lot 10

10% of Lot 10 for MSU Angus Program

We selected this bull for our 10% donation of Lot 10, to MSU's Montana Angus Program. He is a great example of our goals to create bulls and cows with correct structure, added bone and athleticism. We have been foot scoring every mother cow for over a decade and were very excited when AAA and MSU joined forces to advance foot scoring and the ANGLE and CLAW EPDs. Looking forward to the next phase of the project!



PGC True North 3091

Bull Born: 02/19/23 Reg: 20807002 Tattoo: 3091

S A V RAINFALL 6846
SQUARE B TRUE NORTH 8052
 ELBANNA OF CONANGA 1209

COLEMAN CHARLO 0256#
 S A V BLACKCAP MAY 4136
 CONNEALY CONSENSUS#
 ELBASTA OF CONANGA 9703

ANGUSGS
Home to Kings and Gold

Claw Set
5
 Foot
 Angle
6

JMB TRACTION 292#
PGC 187 LADY 7090
 TOP NOTCH 187 LADY 906#

SITZ TOP GAME 561X#
 JMB EMULOTA 013
 KMK ALLIANCE 6595 187#
 LEACHMAN LASS 1059

Calving Ease	Birth Wt	Act Wn Wt	WW Ratio	365 Wt	YW Ratio	Adj Scrotal	Dam Production
★★	88	767	115	1110	106	34.9	5 WR 108
CED	BW	WW	YW	HP	MILK	SEN	
+2	+1.9	+57	+101	+14.6	+36	-5	
Marb EPD	REA EPD	Fat EPD	\$M	\$W	\$B	\$C	
+0.70	+0.63	+0.026	+83	+65	+128	+249	

Lot 11 is an easy fleshing True North out of an awesome Traction cow. They have been a beautiful pair since birth. Dam posts 5 BW @ 78#, 5 WR @ 108, 5 YR @ 106 - has already calved 1st cycle in 2024, a full brother to 3091, with perfect calving book scores. Granddam was a favorite in PGC herd - 11 BW @ 71#, WR @ 104, YR @ 109, with a 366 day calving interval.



Bull Videos available at
www.NorthernLivestockVideo.com
 with a direct link to each Lot by
 scanning their QR Code.

In Loving Memory

Ted Solomon

February 9th, 1937 – February 18th, 2024

In honor of a great man, and to a life well lived. May we all remember to live each moment to the fullest, love unconditionally & never take struggles too seriously!

Thanks for everything Ted!





12

PGC Fair - N - Square 3087

Bull Born: 02/17/23 Reg: +20804295 Tattoo: 3087

WOODHILL BLUEPRINT#
MYERS FAIR-N-SQUARE M39
 MYERS MISS BEAUTY M136

CONNEALY CONFIDENCE PLUS#
 WOODHILL EVERGREEN Z291-B233
 CONNEALY THUNDER#
 MYERS MISS BEAUTY M476#

ANGUS GS

Claw Set
6
 Foot
 Angle
6

SITZ UPSIDE 547W#
PGC SHOESHONE GIRL 4106#
 PGC SHOESHONE GIRL 0229#

SITZ UPWARD 307R#
 SITZ EMMA 27T
 PGC MAGNITUDE 8060
 D C M SHOESHONE 518 572#

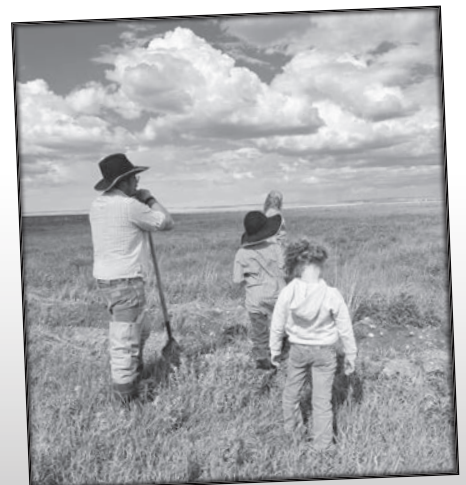
Calving Ease	Birth Wt	Act Wn Wt	WW Ratio	365 Wt	YW Ratio	Adj Scrotal	Dam Production
★★★	ET	692	100	1125	100	32.9	8 WR 106
CED	BW	WW	YW	HP	MILK	SEN	
+8	+1.4	+77	+131	+13.5	+26	-32	
Marb EPD	REA EPD	Fat EPD	\$M	\$W	\$B	\$C	
+0.95	+0.47	+0.027	+64	+71	+155	+265	

A fancy Fair N Square son out of the great PGC donor 4106. Lot 12 ranks in the top 35% for WW (15%), YW (20%), RADG, YH (30%), MW (20%), MH (15%), Doc (25%), Angle (20%), Marb (25%), \$B, \$W, \$G, \$C. His full and half sisters are proving to be outstanding in both phenotype and maternal attributes. 4106 continues to make a profound impact on the PGC herd, her current stats are 8 calves BW @ 87#, WR @ 106, YR @ 105 raised at side, maintaining a 365 day calving interval - all while producing an average of 17 embryos per flush annually in between calving and breed back. Her progeny average is 35 calves BW @ 87#, WR @ 101, YR @ 101 - raised on recipients within the registered herd with no special treatment or supplements, just native grass, salt and mineral.

VIDEO



Full Sister to Lot 12





13 Bull Born: 02/20/23 Reg: +20852920 Tattoo: 3525

WOODHILL BLUEPRINT#
MYERS FAIR-N-SQUARE M39
 MYERS MISS BEAUTY M136

B/R NEW FRONTIER 095#
HOLMAN BLACKBIRD 733
 C A MISS SKY C191

CONNELLY CONFIDENCE PLUS#
 WOODHILL EVERGREEN Z291-B233
 CONNELLY THUNDER#
 MYERS MISS BEAUTY M476#
 B/R NEW DESIGN 036#
 WHITE FENCE PRIDE H1
 WESTWIND RITO 8503 D J H 019#
 C A SKY TIME C86

ANGUS
Claw Set
5
Foot Angle
5

Calving Ease	Birth Wt	Act Wn Wt	WW Ratio	365 Wt	YW Ratio	Adj Scrotal	Dam Production
★★	ET	659	103	1098	105	33.0	11 WR 109
CED	BW	WW	YW	HP	MILK	SEN	
+7	+3.7	+71	+123	+11.0	+35	-18	
Marb EPD	REA EPD	Fat EPD	\$M	\$W	\$B	\$C	
+52	+67	+009	+76	+70	+119	+230	

The only chance at an own son of the great 733 donor in the sale this year. Drought made us make some tough decisions and we didn't implant any embryos in the commercial herd in 2022. Lot 13 is a cool embryo calf with added thickness. He ranks in the top 35% of the breed for WW (30%), YW, DMI, Milk (10%), Doc, Claw (10%), Angle (20%), \$M, and \$W.



14 Bull Born: 02/17/23 Reg: 20807001 Tattoo: 3088

MOHNEN SUBSTANTIAL 272#
SITZ STELLAR 726D#
 SITZ PRIDE 200B

SITZ RELOAD 411C#
PGC GUIDING LADY 8104
 PGC GUIDING LADY 0157


BENFIELD SUBSTANCE 8506#
 MOHNEN GLYN MAWR ELBA 1758
 CONNELLY FINAL PRODUCT#
 SITZ PRIDE 308Y#
 S A V RESOURCE 1441#
 SITZ FOREVER LADY 612T#
 GARDENS PRIME STAR#
 TOP NOTCH GUIDING LADY 5204

ANGUS
Claw Set
6
Foot Angle
6

Calving Ease	Birth Wt	Act Wn Wt	WW Ratio	365 Wt	YW Ratio	Adj Scrotal	Dam Production
★★★	84	708	106	1127	108	35.9	3 WR 104
CED	BW	WW	YW	HP	MILK	SEN	
+7	-0.3	+63	+113	+11.7	+19	-1	
Marb EPD	REA EPD	Fat EPD	\$M	\$W	\$B	\$C	
+78	+36	+021	+71	+59	+117	+223	

Lot 14 is Casey's buddy in the bull pen. He is a stylish, just like most of the Stellar's with good stats from weaning to yearling. Dam is a nice Reload cow, already calved first cycle in 2024 to a full brother of Lot 14.





ABOVE AVERAGE GOALS REQUIRE TARGETED BULLS


Aim High

The Targeting the Brand™ logo highlights registered Angus bulls with greater genetic potential to produce calves that meet the most challenging specifications of the Certified Angus Beef® brand.

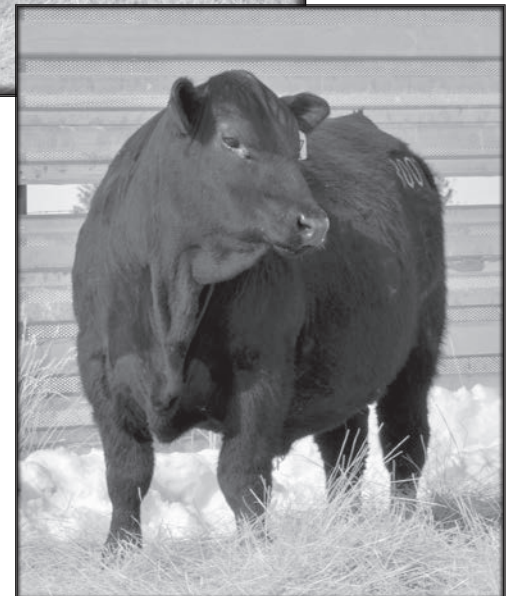
Only 1 in 4 non-parent Angus bulls qualify.

Minimum Genetic Requirements

Marbling EPD (Marb)	+0.65
Dollar Grid Carcass Index (\$G)	+55.0



For more information on Targeting the Brand™ visit CABcattle.com.



lot 15

PGC Stellar 3007

Bull Born: 02/03/23 Reg: 20806983 Tattoo: 3007
 MOHNEN SUBSTANTIAL 272# BENFIELD SUBSTANCE 8506#
 SITZ STELLAR 726D# MOHNEN GLYN MAWR ELBA 1758
 SITZ PRIDE 200B CONNEALY FINAL PRODUCT#
 SITZ PRIDE 308Y#
 PGC PLAYBOOK 916 TEX PLAYBOOK 5437#
 PGC LADY ACE 1151 ABP ELINE 230
 PGC LADY ACE 8163 PGC MATRIX 5172
 PGC LADY ACE 2089#

ANGUS GS
 Claw Set 5
 Foot Angle 6

Calving Ease	Birth Wt	Act Wn Wt	WW Ratio	365 Wt	YW Ratio	Adj Scrotal	Dam Production
★★★★	58	729	116	1159	111	35.5	1 WR 116
CED	BW	WW	YW	HP	MILK	\$EN	
+8	-0.9	+83	+149	+15.9	+28	-22	
Marb EPD	REA EPD	Fat EPD	\$M	\$W	\$B	\$C	
+0.61	+0.59	+0.027	+83	+83	+149	+276	

This curve-bending heifer bull is DEEP, DEEP, DEEP. Out of a first calf heifer, this bull has been a standout since weaning with a really nice set of numbers and i50K. This bull should do it all - strong fertility, good feeder calves, and nice replacement females. Ranks in the top 35% or better for CED, BW (15%), WW (10%), YW (5%), RADG (20%), SC, HP (15%), Doc (30%), PAP (30%), HS (10%), CW (20%), \$M (10%), \$F (25%), \$W (3%), \$C (30%).





16

PGC True North 3031

Bull Born: 02/07/23 Reg: 20806988 Tattoo: 3031

S A V RAINFALL 6846
SQUARE B TRUE NORTH 8052
 ELBANNA OF CONANGA 1209

COLEMAN CHARLO 0256#
 S A V BLACKCAP MAY 4136
 CONNEALY CONSENSUS#
 ELBASTA OF CONANGA 9703
 MOHNEN SUBSTANTIAL 272#
 SITZ PRIDE 200B
 KB-FULL MEASURE C40#
 PGC RALLY MGR LADY 4119

ANGUS

Claw Set

5

Foot Angle

6



SITZ STELLAR 726D#
PGC RALLY MGR LADY 1029
 PGC RALLY MGR LADY 9091

Calving Ease	Birth Wt	Act Wn Wt	WW Ratio	365 Wt	YW Ratio	Adj Scrotal	Dam Production
★★★★	76	751	120	1113	106	35.6	1 WR 120
CED	BW	WW	YW	HP	MILK	\$EN	
+9	-0.2	+75	+130	+12.7	+29	+0	
Marb EPD	REA EPD	Fat EPD	\$M	\$W	\$B	\$C	
+1.32	+0.55	+0.045	+94	+82	+169	+313	



A thick made, moderate, curve bending heifer bull out of a promising True North first calf heifer. Dam bred back first cycle raising this bull and has already calved this spring, posting great calving book scores for temperament, feet, and udder. This bull should throw calves that come easy and grow to weaning as well as perform in the feedyard. Heifer calves should make beautiful, functional replacements. Ranks in top 30% or better for CED, BW, WW, YW, Milk, \$EN, Doc, Claw, PAP, HS, Marb, \$M, \$B, \$W, \$G, \$C.





19 PGC Forge 3092

Bull Born: 02/19/23 Reg: 20804297 Tattoo: 3092
 CONNEALY CAPITALIST 028#
PGC FORGE
 PGC SHOESHONE GIRL 4106#
 S CHISUM 6175#
PGC TRAVELER GIRL 3088
 PGC TRAVELER 563
 S A V FINAL ANSWER 0035#
 PRIDES PITA OF CONANGA 8821
 SITZ UPSIDE 547W#
 PGC SHOSHONE GIRL 0229#
 S ALLIANCE 3313
 S GLORIA 464#
 MOHNEN MODERN DESIGN
 PGC TRAVELER 651

ANGUS
Claw Set
5
Foot Angle
7

Calving Ease	Birth Wt	Act Wn Wt	WW Ratio	365 Wt	YW Ratio	Adj Scrotal	Dam Production
★	100	685	106	1173	112	34.0	9 WR 102
CED	BW	WW	YW	HP	MILK	SEN	
+0	+3.2	+69	+118	+14.1	+26	-8	
Marb EPD	REA EPD	Fat EPD	\$M	\$W	\$B	\$C	
+0.47	+0.65	+0.002	+80	+64	+126	+243	

A cow bull out of a 10 year old cow, who remains in production in the PGC herd. This Forge bull is thick made with a deep rib.



17 PGC True North 313

Bull Born: 02/07/23 Reg: 20804308 Tattoo: 313
 S A V RAINFALL 6846
SQUARE B TRUE NORTH 8052
 ELBANNA OF CONANGA 1209
 SITZ STELLAR 726D#
ABP STELLAR MEATPACKIN MAMA
 ABP MEATPACKIN MAMA BEAR 502
 COLEMAN CHARLO 0256#
 S A V BLACKCAP MAY 4136
 CONNEALY CONSENSUS#
 ELBASTA OF CONANGA 9703
 MOHNEN SUBSTANTIAL 272#
 SITZ PRIDE 200B
 CONNEALY CAPITALIST 028#
 TOPNOTCH MEATPACKIN MAMA 310

ANGUS
Claw Set
Foot Angle

Calving Ease	Birth Wt	Act Wn Wt	WW Ratio	365 Wt	YW Ratio	Adj Scrotal	Dam Production
★★★★	72	688	111	1105	106		1 WR 111
CED	BW	WW	YW	HP	MILK	SEN	
+13	-1.3	+71	+119	+12.3	+33	-5	
Marb EPD	REA EPD	Fat EPD	\$M	\$W	\$B	\$C	
+0.97	+0.64	+0.078	+90	+83	+145	+278	

Thick, moderate and docile heifer bull that catches your eye. FED @ Laverdure Ranch.



20 PGC Forge 3037

Bull Born: 02/08/23 Reg: 20804286 Tattoo: 3037
 CONNEALY CAPITALIST 028#
PGC FORGE
 PGC SHOESHONE GIRL 4106#
 SITZ RELOAD 411C#
PGC SHOSHONE 0514
 PGC SHOSHONE 5082
 S A V FINAL ANSWER 0035#
 PRIDES PITA OF CONANGA 8821
 SITZ UPSIDE 547W#
 PGC SHOSHONE GIRL 0229#
 S A V RESOURCE 1441#
 SITZ FOREVER LADY 612T#
 SITZ UPSIDE 547W#
 PGC SHOSHONE 8021

ANGUS
Claw Set
5
Foot Angle
6

Calving Ease	Birth Wt	Act Wn Wt	WW Ratio	365 Wt	YW Ratio	Adj Scrotal	Dam Production
★★	92	675	105	1095	105	34.6	2 WR 103
CED	BW	WW	YW	HP	MILK	SEN	
+3	+4.3	+73	+130	+15.1	+29	-19	
Marb EPD	REA EPD	Fat EPD	\$M	\$W	\$B	\$C	
+0.28	+0.52	+0.028	+86	+63	+118	+239	

This Forge son carries the correct structure and added bone we like to see, along with performance from weaning through the development period. His young, reliable dam posts 2 WR @ 103, both sale bulls (half brother sold to John and Debbie Stout in our 2023 sale) and has already calved first cycle in 2024. This bull ranks in the top 25% or better for WW, YW, HP, Doc, Claw, Angle, \$M.



18 PGC Blueprint 3051

Bull Born: 02/11/23 Reg: 20806992 Tattoo: 3051
 CONNEALY CONFIDENCE PLUS#
WOODHILL BLUEPRINT#
 WOODHILL EVERGREEN Z291-B233
 BDAR COOL C65
PGC LADY THICKNEEP 1166
 PGC LADY THICKNEEP 5104
 CONNEALY CONFIDENCE 0100#
 ELBANNA OF CONANGA 1209
 TEHAMA SIERRA CUT Z118
 WOODHILL EVERGREEN U6-Z291
 CONNEALY COOL 39L#
 BDAR PRIDE 227Z#
 PA POWER TOOL 9108#
 TOP NOTCH LADY THICKNEEP 11#

ANGUS
Claw Set
6
Foot Angle
5

Calving Ease	Birth Wt	Act Wn Wt	WW Ratio	365 Wt	YW Ratio	Adj Scrotal	Dam Production
★★★★	68	592	98	1090	104	35.2	1 WR 98
CED	BW	WW	YW	HP	MILK	SEN	
+9	+0.4	+62	+113	+14.0	+29	-13	
Marb EPD	REA EPD	Fat EPD	\$M	\$W	\$B	\$C	
+0.65	+0.57	+0.070	+65	+64	+136	+241	

A heifer bull out of a promising young cow. His dam is a first calf heifer out of our prolific BDAR Cool C65 herd sire. She bred back and has already calved first cycle this year, posting perfect calving book scores. Granddam posts 6 WR @ 106.





21 Bull Born: 02/06/23 Reg: 20804302 Tattoo: 311

MOHNEN SUBSTANTIAL 272#
SITZ STELLAR 726D#
 SITZ PRIDE 200B

SQUARE B TRUE NORTH 8052
ABP RAZZI GIRL 112
 ABP RAZZI GIRL 836

BENFIELD SUBSTANCE 8506#
 MOHNEN GLYN MAWR ELBA 1758
 CONNEALY FINAL PRODUCT#
 SITZ PRIDE 308Y#

S A V RAINFALL 6846
 ELBANNA OF CONANGA 1209
 BDAR COOL C65
 ABP RAZZI GIRL 505

ANGUS 633
 Claw Set
 Foot Angle

Calving Ease	Birth Wt	Act Wn Wt	WW Ratio	365 Wt	YW Ratio	Adj Scrotal	Dam Production
★★★	76	645	110	1156	111		1 WR 110
CED	BW	WW	YW	HP	MILK		SEN
+6	+1.0	+72	+139	+13.0	+28		-21
Marb EPD	REA EPD	Fat EPD	\$M	\$W	\$B		\$C
+0.71	+0.43	+0.036	+0.73	+0.68	+1.44		+260

Long made stylish bull out of a dam that bred back first cycle and has another stylish bull calf at her side. FED @ Laverdure Ranch.



23 Bull Born: 02/07/23 Reg: 20887082 Tattoo: 314

CONNEALY CONFIDENCE PLUS#
WOODHILL BLUEPRINT#
 WOODHILL EVERGREEN Z291-B233

CLEAR CREEK HICKOCK 713
PGC GUIDING LADY 1086
 PGC GUIDING LADY 8104

CONNEALY CONFIDENCE 0100#
 ELBANNA OF CONANGA 1209
 TEHAMA SIERRA CUT Z118
 WOODHILL EVERGREEN U6-Z291

MILL BAR HICKOCK 7242#
 CLEAR CREEK BRANDY 505
 SITZ RELOAD 411C#
 PGC GUIDING LADY 0157

ANGUS 633
 Claw Set
 Foot Angle

Calving Ease	Birth Wt	Act Wn Wt	WW Ratio	365 Wt	YW Ratio	Adj Scrotal	Dam Production
★★★	74	628	107	1233	100	35.6	1 WR 107
CED	BW	WW	YW	HP	MILK		SEN
+9	+0.9	+81	+146	+9.0	+23		-29
Marb EPD	REA EPD	Fat EPD	\$M	\$W	\$B		\$C
+0.90	+0.95	+0.016	+0.60	+0.72	+1.64		+273

A calving ease, curve bending, performance bull, with a balanced number profile. Ranks in the top 10% for WW, YW, RADG and the top 25% or better for MW, Doc, RE, \$B, \$W and \$G.



22 Bull Born: 02/13/23 Reg: 20806995 Tattoo: 3067

CONNEALY CONFIDENCE PLUS#
WOODHILL BLUEPRINT#
 WOODHILL EVERGREEN Z291-B233

SITZ UPSIDE 547W#
PGC SHOSHONE 5082
 PGC SHOSHONE 8021

CONNEALY CONFIDENCE 0100#
 ELBANNA OF CONANGA 1209
 TEHAMA SIERRA CUT Z118
 WOODHILL EVERGREEN U6-Z291

SITZ UPWARD 307R#
 SITZ EMMA 27T
 MYTTY IN FOCUS#
 PGC SHOSHONE 621

ANGUS 633
 Claw Set
 Foot Angle

Calving Ease	Birth Wt	Act Wn Wt	WW Ratio	365 Wt	YW Ratio	Adj Scrotal	Dam Production
★★	90	675	100	1107	106	32.2	6 WR 96
CED	BW	WW	YW	HP	MILK		SEN
+5	+2.4	+77	+138	+11.2	+33		-42
Marb EPD	REA EPD	Fat EPD	\$M	\$W	\$B		\$C
+0.84	+0.64	+0.029	+0.48	+0.71	+1.68		+266

A powerful cow bull out of a consistent cow family. Dam records 7 calves with a 368 day calving interval. Ranks in the top 25% or better for WW (20%), YW (15%), RADG (15%), Milk (15%), MW (15%), MH (10%), CW (25%), \$F (15%), \$B (20%), \$W (20%).



24 Bull Born: 03/10/23 Reg: 20804307 Tattoo: 3129

TEX PLAYBOOK 5437#
PGC PLAYBOOK 916
 ABP ELINE 230

SITZ UPSIDE 547W#
PGC EXT 5140
 PGC EXT 677

BASIN PAYWEIGHT 1682#
 RITA 1C43 OF 9M26 COMPLETE
 TOP NOTCH BIG BUD
 LEACHMAN ELINE 1058

SITZ UPWARD 307R#
 SITZ EMMA 27T
 MYTTY IN FOCUS#
 PGC EXT 352

ANGUS 633
 Claw Set
 Foot Angle

Calving Ease	Birth Wt	Act Wn Wt	WW Ratio	365 Wt	YW Ratio	Adj Scrotal	Dam Production
★★★	82	654	104	1088	104	35.5	4 WR 103
CED	BW	WW	YW	HP	MILK		SEN
+10	-0.2	+63	+118	+13.4	+31		+0
Marb EPD	REA EPD	Fat EPD	\$M	\$W	\$B		\$C
-0.04	+0.12	+0.015	+0.84	+0.70	+0.98		+211

Lot 24 is a quiet and thick Playbook 916 heifer bull out of a reliable Upside cow. Dam records 6 BW @ 81#, WR @ 100. He ranks in the top 25% of the breed for CED (20%), BW (20%), RADG (25%), CEM (3%), Milk (15%), \$EN (20%), Doc (3%), \$M (10%), \$W (20%).





25 PGC Stellar 3004 Bull Born: 02/01/23 Reg: 20806981 Tattoo: 3004

MOHNEN SUBSTANTIAL 272#
SITZ STELLAR 726D#
 SITZ PRIDE 200B

BENFIELD SUBSTANCE 8506#
 MOHNEN GLYN MAWR ELBA 1758
 CONNEALY FINAL PRODUCT#
 SITZ PRIDE 308Y#

PGC PLAYBOOK 916
PGC BUSH LADY 1163
 PGC BUSH LADY 8034

TEX PLAYBOOK 5437#
 ABP ELINE 230
 SITZ RELOAD 411C#
 PGC BUSH LADY 2035

ANGUS 65
 Claw Set
5
 Foot
 Angle
5

Calving Ease	Birth Wt	Act Wn Wt	WW Ratio	365 Wt	YW Ratio	Adj Scrotal	Dam Production
★★★	60	653	104	1058	101	32.4	1 WR 104
CED	BW	WW	YW	HP	MILK	SEN	
+7	-0.8	+69	+119	+14.8	+29	-16	
Marb EPD	REA EPD	Fat EPD	\$M	\$W	\$B	\$C	
+0.29	+0.57	+0.024	+82	+73	+116	+232	

A balanced heifer bull, with an excellent maternal pedigree. Out of a first calf Playbook heifer, maternal granddam posts 3 WR @ 100, maternal great-granddam posts 6 WR @ 103, and paternal granddam posts 7 WR @ 104. Ranks in th top 15% \$W, 10% \$M.



26 PGC True North 3012 Bull Born: 02/03/23 Reg: 20806984 Tattoo: 3012

S A V RAINFALL 6846
SQUARE B TRUE NORTH 8052
 ELBANNA OF CONANGA 1209

COLEMAN CHARLO 0256#
 S A V BLACKCAP MAY 4136
 CONNEALY CONSENSUS#
 ELBASTA OF CONANGA 9703

SITZ STELLAR 726D#
PGC GUIDING LADY 0015
 PGC GUIDING LADY 8139

MOHNEN SUBSTANTIAL 272#
 SITZ PRIDE 200B
 KEL MCC UPWARD 8383 2308
 PGC GUIDING LADY 8058

ANGUS 65
 Claw Set
5
 Foot
 Angle
5

Calving Ease	Birth Wt	Act Wn Wt	WW Ratio	365 Wt	YW Ratio	Adj Scrotal	Dam Production
★★★	74	665	102	1064	102	35.0	1 WR 102
CED	BW	WW	YW	HP	MILK	SEN	
+8	+1.1	+84	+148	+14.8	+27	-14	
Marb EPD	REA EPD	Fat EPD	\$M	\$W	\$B	\$C	
+1.09	+0.65	+0.048	+90	+83	+182	+326	

An athletic calving ease prospect, with a knockout EPD profile. We are really liking the Stellar/True North combination for correctness, thickness and functionality. Ranks in the top 5% WW, YW, HP, HS, \$M, \$W & \$C. Top 15% for Claw, CW, Marb, \$F, \$B, \$G.



27 PGC True North 3501 Bull Born: 01/27/23 Reg: 20804315 Tattoo: 3501

S A V RAINFALL 6846
SQUARE B TRUE NORTH 8052
 ELBANNA OF CONANGA 1209

COLEMAN CHARLO 0256#
 S A V BLACKCAP MAY 4136
 CONNEALY CONSENSUS#
 ELBASTA OF CONANGA 9703

SITZ STELLAR 726D#
CP BLACKBIRD 1531
 HOLMAN BLACKBIRD 733

MOHNEN SUBSTANTIAL 272#
 SITZ PRIDE 200B
 B/R NEW FRONTIER 095#
 C A MISS SKY C191

ANGUS 65
 Claw Set
5
 Foot
 Angle
6

Calving Ease	Birth Wt	Act Wn Wt	WW Ratio	365 Wt	YW Ratio	Adj Scrotal	Dam Production
★★★	58	681	107	1031	98	35.2	1 WR 107
CED	BW	WW	YW	HP	MILK	SEN	
+13	-1.2	+79	+134	+13.8	+24	-19	
Marb EPD	REA EPD	Fat EPD	\$M	\$W	\$B	\$C	
+0.87	+0.62	+0.028	+85	+78	+134	+259	

Another sleep all night heifer bull with a curve bending EPD profile out of the True North/Stellar combination. His dam is a first calf heifer that calved first cycle with her second calf in 2024. Lot 27 ranks in the top 35% of the breed for CED (10%), BW (10%), WW (10%), YW (15%), SC (20%), HP, CEM, Doc (5%), Claw (10%), HS (5%), Marb (30%), \$M (10%), \$W (10%), \$G.



Lot 27 at birth





August 23, 2023



28 PGC Broken Bow 9048-3125

28 Bull Born: 03/05/23 Reg: 20804304 Tattoo: 3125
 KM BROKEN BOW 002#
PGC BROKEN BOW 9048
 PGC ALLIANCE LADY 7032
 HOOVER BULLSEYE M122
PGC GUIDING LADY 5017
 PGC GUIDING LADY 1148

SUMMITCREST COMPLETE 1P55#
 SUMMITCREST PRINCESS 0P12#
 H A IMAGE MAKER 0415#
 TOP NOTCH ALLIANCE LADY 1204
 MOGCK BULLSEYE#
 ERICA OF ELLSTON J84#
 KEL MCC IMAGE MAKER ML 853
 TOP NOTCH GUIDING LADY 5204

Calving Ease	Birth Wt	Act Wn Wt	WW Ratio	365 Wt	YW Ratio	Adj Scrotal	Dam Production
★★	80	746	116	1137	109	34.4	7 WR 102
CED	BW	WW	YW	HP	MILK	SEN	
+2	+1.5	+78	+124	+11.8	+26	-23	
Marb EPD	REA EPD	Fat EPD	\$M	\$W	\$B	\$C	
+0.45	+0.73	+0.11	+0.73	+0.76	+1.35	+2.48	

Lot 28 is a cow bull out of a proven Bullseye cow and our good Broken Bow 9048 bull. Dam posts 7 BW @ 72#, WR @ 102, YR @ 102. Lot 25 ranks in the top 35% of the breed for WW (15%), YW, YH (30%), CEM, MH (25%), Doc (15%), Claw (20%), Angle (20%), HS (10%), CW, \$M (25%), \$W (15%).



Bull Videos available at
www.NorthernLivestockVideo.com
 with a direct link to each Lot by
 scanning their QR Code.

29 PGC Blueprint 104-3127

29 Bull Born: 03/06/23 Reg: 20804305 Tattoo: 3127
 WOODHILL BLUEPRINT#
PGC BLUEPRINT 104
 ABP MEATPACKIN MAMA 901
 CLEAR CREEK HICKOCK 713
PGC SHOSHONE PRINCESS 9077#
 PGC SHOSHONE 670

CONNEALY CONFIDENCE PLUS#
 WOODHILL EVERGREEN Z291-B233
 MILL BAR HICKOK 7242#
 TOPNOTCH MEATPACKIN MAMA 310
 MILL BAR HICKOK 7242#
 CLEAR CREEK BRANDY 505
 MYTTY IN FOCUS#
 D C M SHOSHONE 518 451

Calving Ease	Birth Wt	Act Wn Wt	WW Ratio	365 Wt	YW Ratio	Adj Scrotal	Dam Production
★★★	86	686	110	1198	115	32.6	2 WR 105
CED	BW	WW	YW	HP	MILK	SEN	
+9	+2.1	+88	+151	+13.3	+25	-29	
Marb EPD	REA EPD	Fat EPD	\$M	\$W	\$B	\$C	
+0.57	+0.82	+0.026	+0.80	+0.78	+1.61	+2.89	

This powerful Blueprint 104 son has been a favorite in the development lot. His young Hickok 713 dam is shaping up to be a reliable first cycle cow, posting 3 BW @ 73#, WR @ 104, YR @ 104. Granddam posts 12 BW @ 70#, WR @ 101, YR 100. Lot 29 ranks in the top 35% of the Angus breed for CED (30%), WW (4%), YW (10%), RADG, YH (3%), SC (30%), CEM, MW, MH (10%), Claw (10%), Angle (10%), CW (15%), RE (30%), \$M (10%), \$F (15%), \$B, \$W (5%), \$C (20%).

30 PGC Playbook 916-3128

30 Bull Born: 03/06/23 Reg: 20804306 Tattoo: 3128
 TEX PLAYBOOK 5437#
PGC PLAYBOOK 916
 ABP ELINE 230
 PA POWER TOOL 9108#
PGC SHOSHONE 7111
 PGC SHOSHONE 670

BASIN PAYWEIGHT 1682#
 RITA 1C43 OF 9M26 COMPLETE
 TOP NOTCH BIG BUD
 LEACHMAN ELINE 1058
 G A R PREDESTINED#
 SHAMROCKS BEEBEE QUEEN 3095
 MYTTY IN FOCUS#
 D C M SHOSHONE 518 451

Calving Ease	Birth Wt	Act Wn Wt	WW Ratio	365 Wt	YW Ratio	Adj Scrotal	Dam Production
★★	96	681	106	1104	105	34.9	5 WR 95
CED	BW	WW	YW	HP	MILK	SEN	
+12	+0.5	+72	+126	+16.7	+33	-12	
Marb EPD	REA EPD	Fat EPD	\$M	\$W	\$B	\$C	
+0.87	+0.50	-0.009	+0.91	+0.78	+1.38	+2.70	

A 3/4 brother to Lot 29, packing the same power and thickness. He ranks in the top 35% of the breed for CED (10%), BW, WW (25%), YW (30%), SC (25%), HP (10%), CEM (10%), Milk (15%), Doc (5%), Marb (30%), Fat (25%), \$M (2%), \$W (10%), \$G (30%), \$C (30%).



31

PGC Blueprint 3013

Bull Born: 02/04/23 Reg: 20806985 Tattoo: 3013

CONNELY CONFIDENCE PLUS#
WOODHILL BLUEPRINT#
WOODHILL EVERGREEN Z291-B233

CONNELY CONFIDENCE 0100#
ELBANNA OF CONANGA 1209
TEHAMA SIERRA CUT Z118
WOODHILL EVERGREEN U6-Z291

ANGUS 303

Claw Set
5
Foot Angle
5

KM BROKEN BOW 002#
PGC LADY KELTON 0041
PGC LADY KELTON 2118

SUMMITCREST COMPLETE 1P55#
SUMMITCREST PRINCESS 0P12#
PGC GARDENS PRIME STAR 0167
KEL MCC LADY KELTON9031 7120

Calving Ease	Birth Wt	Act Wn Wt	WW Ratio	365 Wt	YW Ratio	Adj Scrotal	Dam Production
★★★	82	778	118	1009	96	34.5	2 WR 109
CED	BW	WW	YW	HP	MILK	\$EN	
+8	+0.5	+78	+138	+12.0	+27	-29	
Marb EPD	REA EPD	Fat EPD	\$M	\$W	\$B	\$C	
+0.35	+0.91	+0.044	+58	+74	+159	+264	

A structurally correct Blueprint son, out of a promising young Broken Bow cow - posting 2 WR @ 109. Granddam was a reliable cow posting 7 WR @ 103. Should make some nice feeder calves! Ranks top 10-15% WW, YW, RADG, CW, RE, \$F, \$W.



32

PGC Blueprint 3069

Bull Born: 02/14/23 Reg: 20806997 Tattoo: 3069

CONNELY CONFIDENCE PLUS#
WOODHILL BLUEPRINT#
WOODHILL EVERGREEN Z291-B233

CONNELY CONFIDENCE 0100#
ELBANNA OF CONANGA 1209
TEHAMA SIERRA CUT Z118
WOODHILL EVERGREEN U6-Z291

ANGUS 303

Claw Set
5
Foot Angle
5

CAR MOTIVE 512
PGC BUSH LADY 8118#
PGC BUSH LADY 6084

SOO LINE MOTIVE 9016#
CAR MISS TARESA 464#
JMB TRACTION 292#
PGC BUSH LADY 0130

Calving Ease	Birth Wt	Act Wn Wt	WW Ratio	365 Wt	YW Ratio	Adj Scrotal	Dam Production
★★★★	78	686	101	1105	105	31.8	4 WR 107
CED	BW	WW	YW	HP	MILK	\$EN	
+7	+0.7	+85	+152	+10.7	+24	-50	
Marb EPD	REA EPD	Fat EPD	\$M	\$W	\$B	\$C	
+0.88	+0.75	+0.016	+34	+71	+170	+254	

A free moving, attractive Blueprint bull out of a proven performer in the PGC herd. Dam posts 4 BW @ 74#, 4 WR @ 107, 4 YR @ 109 with an average calving interval of 368 days and has already calved first cycle with her 5th calf. Granddam posts 5 BW @ 76#, 5 WR @ 105, 5 YR @ 106 and an average calving interval of 364 days, already calving first cycle with her seventh calf in 2024. ranks in the top 10% for WW, 4% YW, 10% RADG and in the top 25% or better for YH, MW, MH, CW, \$F, \$B, \$W, and \$G.



33

PGC Stellar 309

Bull Born: 02/05/23 Reg: 20804296 Tattoo: 309

MOHNE SUBSTANTIAL 272#
SITZ STELLAR 726D#
SITZ PRIDE 200B

BENFIELD SUBSTANCE 8506#
MOHNE GYN MAWR ELBA 1758
CONNELY FINAL PRODUCT#
SITZ PRIDE 308Y#
SITZ RELOAD 411C#
OFC FINAL PRODUCT 1233
NICHOLS EXTRA K205#
NA MISS MONA 0106

ANGUS 303

Claw Set
5
Foot Angle
5

PGC RELOAD 813
ABP MISS MONA 128
NA MISS MONA 909

Calving Ease	Birth Wt	Act Wn Wt	WW Ratio	365 Wt	YW Ratio	Adj Scrotal	Dam Production
★★★★	68	658	111	1035	99		1 WR 111
CED	BW	WW	YW	HP	MILK	\$EN	
+12	-0.8	+64	+110	+14.2	+25	-5	
Marb EPD	REA EPD	Fat EPD	\$M	\$W	\$B	\$C	
+0.52	+0.22	+0.069	+92	+67	+112	+237	

This bull is out of a first calf heifer who weaned him at easily half her body weight & bred back first cycle with a beautiful TAHOE heifer calf. His granddam posted 11 calves @ 102 WR. FED @ Laverdure Ranch.



34

PGC Forge 3055

Bull Born: 02/11/23 Reg: 20804288 Tattoo: 3055

CONNELY CAPITALIST 028#
PGC FORGE
PGC SHOESHONE GIRL 4106#

S A V FINAL ANSWER 0035#
PRIDES PITA OF CONANGA 8821
SITZ UPSIDE 547W#
PGC SHOSHONE GIRL 0229#
HF KODIAK 5R
TLA BEAUTY 5R
S A V BRUISER 9164#
TOP NOTCH MISS FOCUS 801#

ANGUS 303

Claw Set
5
Foot Angle
6

SOO LINE MOTIVE 9016#
PGC MISS FOCUS 8002#
PGC MISS FOCUS 5080

Calving Ease	Birth Wt	Act Wn Wt	WW Ratio	365 Wt	YW Ratio	Adj Scrotal	Dam Production
★★★★	82	702	103	1053	101	37.2	4 WR 105
CED	BW	WW	YW	HP	MILK	\$EN	
+10	-1.4	+53	+98	+17.5	+29	+2	
Marb EPD	REA EPD	Fat EPD	\$M	\$W	\$B	\$C	
+0.54	+0.57	+0.031	+83	+61	+129	+250	

A heifer bull out of an easy fleshing Motive cow. Ranks in the top 20% for CED, BW (10%), DMI, HP (5%), \$EN (15%), PAP (5%), \$M (10%).





35 Bull Born: 02/04/23 Reg: 20804293 Tattoo: 308

MOHNEN SUBSTANTIAL 272#
SITZ STELLAR 726D#
 SITZ PRIDE 200B

WOODHILL BLUEPRINT#
ABP OX BOW LUCY 110
 ABP OX BOW LUCY 922

BENFIELD SUBSTANCE 8506#
 MOHNEN GLYN MAWR ELBA 1758
 CONNEALY FINAL PRODUCT#
 SITZ PRIDE 308Y#

CONNEALY CONFIDENCE PLUS#
 WOODHILL EVERGREEN Z291-B233
 KB-FULL MEASURE C40#
 ABP OX BOW LUCY 235

ANGUS
 Claw Set
 Foot
 Angle

Calving Ease	Birth Wt	Act Wn Wt	WW Ratio	365 Wt	YW Ratio	Adj Scrotal	Dam Production
★★★	78	634	107	1039	100		1 WR 107
CED	BW	WW	YW	HP	MILK	SEN	
+8	+2.2	+77	+129	+13.3	+30	-26	
Marb EPD	REA EPD	Fat EPD	\$M	\$W	\$B	\$C	
+0.43	+0.36	+0.081	+74	+75	+108	+214	

Moderate shapey bull that is gentle as they come. FED @ Laverdure Ranch.



37 Bull Born: 02/11/23 Reg: +20887088 Tattoo: 3057

CONNEALY CONFIDENCE PLUS#
WOODHILL BLUEPRINT#
 WOODHILL EVERGREEN Z291-B233

PGC IN FOCUS 8041
PGC ACES LADY 2100
 PGC ACE'S LADY 9007

CONNEALY CONFIDENCE 0100#
 ELBANNA OF CONANGA 1209
 TEHAMA SIERRA CUT Z118
 WOODHILL EVERGREEN U6-Z291

MYTTIN IN FOCUS#
 TOP NOTCH RAZZI GIRL 4504#
 NICHOLS EXTRA K205#
 TOP NOTCH ACE'S LADY 643#

ANGUS
 Claw Set
 Foot
 Angle

Calving Ease	Birth Wt	Act Wn Wt	WW Ratio	365 Wt	YW Ratio	Adj Scrotal	Dam Production
★★	ET	610	97	987	95	34.8	8 WR 101
CED	BW	WW	YW	HP	MILK	SEN	
+4	+2.6	+83	+137	+8.6	+32	-33	
Marb EPD	REA EPD	Fat EPD	\$M	\$W	\$B	\$C	
+0.67	+0.80	+0.022	+62	+80	+154	+262	

An athletic fertile bull, out of a really reliable cow. Dam posts 8 WR @ 101. Ranks in the top 25% or better in the Angus Breed for WW, YW, SC, Milk, MW, MH, Doc, Claw, CW, \$F, and \$W.



36 Bull Born: 02/04/23 Reg: 20804284 Tattoo: 3019

CONNEALY CONFIDENCE PLUS#
CIRCLE L BOONE
 RB LADY DENVER 167-428

PGC FORGE
PGC MS PATTIE 0078
 PGC MS IN FOCUS 1003

CONNEALY CONFIDENCE 0100#
 ELBANNA OF CONANGA 1209
 EXAR DENVER 2002B#
 R B LADY PARTY 167-305

CONNEALY CAPITALIST 028#
 PGC SHOESHONE GIRL 4106#
 SITZ GAME POINT 10128
 TOP NOTCH MS IN FOCUS 954

ANGUS
 Claw Set
 Foot
 Angle

Calving Ease	Birth Wt	Act Wn Wt	WW Ratio	365 Wt	YW Ratio	Adj Scrotal	Dam Production
★★	90	724	111	1129	108	32.5	2 WR 104
CED	BW	WW	YW	HP	MILK	SEN	
-1	+3.8	+74	+121	+14.4	+26	-28	
Marb EPD	REA EPD	Fat EPD	\$M	\$W	\$B	\$C	
+0.65	+0.66	+0.000	+72	+63	+161	+281	

Cow bull. Would do a great job making a set of feeder calves. Ranks in the top 35% or better for WW (25%), YH (30%), HP (25%), CEM (10%), MW (30%), MH (15%), Doc (20%), Claw (10%), Angle (5%), PAP (15%), CW (20%), Fat, \$M (25%), \$F (20%), \$B (30%), \$C (25%).



Full Sister to Lot 37



38 Bull Born: 02/08/23 Reg: 20806989 Tattoo: 3035

MOHNEN SUBSTANTIAL 272#
SITZ STELLAR 726D#
 SITZ PRIDE 200B

PGC FORGE
PGC MISS SITZ 1026
 PGC MISS SITZ 8151

BENFIELD SUBSTANCE 8506#
 MOHNEN GLYN MAWR ELBA 1758
 CONNEALY FINAL PRODUCT#
 SITZ PRIDE 308Y#

CONNEALY CAPITALIST 028#
 PGC SHOESHONE GIRL 4106#
 BDAR CONFIDENCE B492
 PGC MISS SITZ 0137

ANGUS
 Claw Set
 Foot
 Angle

Calving Ease	Birth Wt	Act Wn Wt	WW Ratio	365 Wt	YW Ratio	Adj Scrotal	Dam Production
★★	72	676	109	1159	111	37.6	1 WR 109
CED	BW	WW	YW	HP	MILK	SEN	
+3	+2.6	+81	+134	+17.2	+17	-20	
Marb EPD	REA EPD	Fat EPD	\$M	\$W	\$B	\$C	
+0.54	+0.36	+0.017	+81	+66	+126	+244	

This balanced cow bull performed well this summer and in the development lot. His dam is a first calf Forge heifer who bred back and has already calved first cycle again this year. Granddam posts 4 WR @ 103. Ranks in the top 25% or better for WW, YW, SC, HP, CEM, Claw, Angle, PAP, HS, \$M.





August 23, 2023

39 PGC Playbook 916-341

Bull Born: 03/18/23 Reg: 20804314 Tattoo: 341
 TEX PLAYBOOK 5437#
PGC PLAYBOOK 916
 ABP ELINE 230
 JMB TRACTION 292#
ABP BLACKCAP 710#
 ABP BLACKCAP 301

BASIN PAYWEIGHT 1682#
 RITA 1C43 OF 9M26 COMPLETE
 TOP NOTCH BIG BUD
 LEACHMAN ELINE 1058
 SITZ TOP GAME 561X#
 JMB EMULOTA 013
 SITZ DASH 10277#
 OFC BLACKCAP 384-1850

ANGUS
 Claw Set
 Foot
 Angle

Calving Ease	Birth Wt	Act Wn Wt	WW Ratio	365 Wt	YW Ratio	Adj Scrotal	Dam Production
★★	90	688	118	1136	109		4 WR 110
CED	BW	WW	YW	HP	MILK	SEN	
+11	+1.2	+73	+120	+11.1	+36	-4	
Marb EPD	REA EPD	Fat EPD	\$M	\$W	\$B	\$C	
+0.27	+0.43	+0.006	+84	+85	+97	+210	

This bull was a standout all summer that followed the herd bulls around to make sure they were doing their job. He is the youngest of the Cut Bank bulls out of moderate easy keeping Pathfinder dam who posts 4 @ 110 WR. FED @ Laverdure Ranch.



41 PGC Blueprint 3036

Bull Born: 02/08/23 Reg: 20806990 Tattoo: 3036
 CONNEALY CONFIDENCE PLUS#
WOODHILL BLUEPRINT#
 WOODHILL EVERGREEN Z291-B233
 PGC RELOAD 813
PGC I87 LADY 0059
 PGC I87 LADY 7090

CONNEALY CONFIDENCE 0100#
 ELBANNA OF CONANGA 1209
 TEHAMA SIERRA CUT Z118
 WOODHILL EVERGREEN U6-Z291
 SITZ RELOAD 411C#
 OFC FINAL PRODUCT 1233
 JMB TRACTION 292#
 TOP NOTCH I87 LADY 906#

ANGUS
 Claw Set
 Foot
 Angle

Calving Ease	Birth Wt	Act Wn Wt	WW Ratio	365 Wt	YW Ratio	Adj Scrotal	Dam Production
★★★	78	646	100	998	95	32.1	2 WR 96
CED	BW	WW	YW	HP	MILK	SEN	
+5	+1.3	+67	+112	+12.6	+32	-8	
Marb EPD	REA EPD	Fat EPD	\$M	\$W	\$B	\$C	
+0.46	+0.57	+0.054	+71	+74	+108	+211	

Calving ease cow bull out of a young Reload 813 dam. We are liking the Blueprints for their growth to weaning, moderate mature frame size and beautiful, deep-bodied, broody mother cows.



40 PGC Blueprint 3038

Bull Born: 02/08/23 Reg: 20806991 Tattoo: 3038
 CONNEALY CONFIDENCE PLUS#
WOODHILL BLUEPRINT#
 WOODHILL EVERGREEN Z291-B233
 BDAR COOL C65
PGC LADY ACE 1111
 PGC LADY ACE 9100

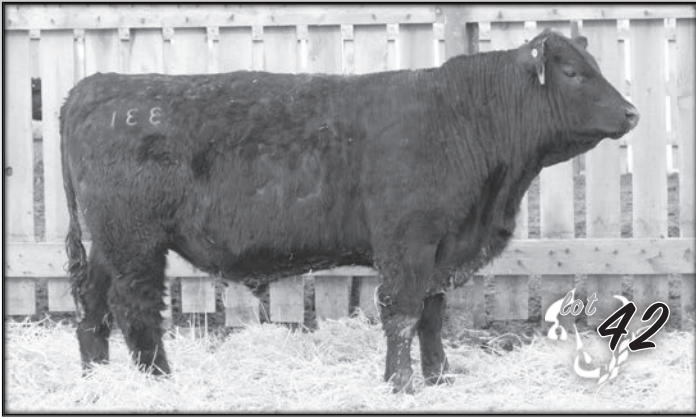
CONNEALY CONFIDENCE 0100#
 ELBANNA OF CONANGA 1209
 TEHAMA SIERRA CUT Z118
 WOODHILL EVERGREEN U6-Z291
 CONNEALY COOL 39L#
 BDAR PRIDE 227Z#
 TEX PLAYBOOK 5437#
 PGC LADY ACE 0192

ANGUS
 Claw Set
 Foot
 Angle

Calving Ease	Birth Wt	Act Wn Wt	WW Ratio	365 Wt	YW Ratio	Adj Scrotal	Dam Production
★★★★	70	654	106	1075	103	33.6	1 WR 106
CED	BW	WW	YW	HP	MILK	SEN	
+10	+0.0	+63	+110	+12.4	+28	-14	
Marb EPD	REA EPD	Fat EPD	\$M	\$W	\$B	\$C	
+0.52	+0.46	+0.065	+70	+65	+127	+235	

A stylish heifer bull, out of a promising maternal lineup. Dam and granddam are absolute sweethearts and have been easy fleshing and fertile through the last few years, despite drought conditions. Dam raised this bull as her first calf and bred back first cycle - posting perfect calving book scores in 2024. Granddam has raised 2 replacements for the PGC herd, and bred back first cycle posting perfect calving book scores in 2024.





42 PGC Authentic 331

Bull Born: 02/20/23 Reg: 20804313 Tattoo: 331
 SITS STELLAR 726D# MOHNEN SUBSTANTIAL 272#
PGC AUTHENTIC 0087 SITS PRIDE 200B
 PGC MISS EXPAND 663-8116# JANSSEN WYATT EARP 5110
 SITS RELOAD 411C# S A V RESOURCE 1441#
ABP MEATPACKIN MAMA 812# PGC MISS EXPAND 663-2054
 TOPNOTCH MEATPACKIN MAMA 3105 S A V BISMARCK 5682#
 SITS FOREVER LADY 612T#
 TOP NOTCH MEATPACKIN MAMA 52

Calving Ease	Birth Wt	Act Wn Wt	WW Ratio	365 Wt	YW Ratio	Adj Scrotal	Dam Production
★★	90	648	102	1076	103		4 WR 105
CED	BW	WW	YW	HP	MILK	SEN	
+6	+1.1	+62	+117	+13.9	+25	-16	
Marb EPD	REA EPD	Fat EPD	\$M	\$W	\$B	\$C	
+0.51	+0.57	+0.001	+74	+58	+127	+239	

This long made bull had an actual weaning of 648 lbs out of a dam that bred back first cycle again and posts 4 calves @ 110 WR. FED @ Laverdure Ranch.

43 PGC Forge 3062

Bull Born: 02/12/23 Reg: 20804291 Tattoo: 3062
 CONNEALY CAPITALIST 028# S A V FINAL ANSWER 0035#
PGC FORGE PRIDES PRIDE OF CONANGA 8821
 PGC SHOESHONE GIRL 4106# SITS UPSIDE 547W#
 PGC SHOESHONE GIRL 0229#
 PGC MATRIX 5172 A A R MATRIX 1901
PGC ERICA LASSIE 8155 PGC BUSH LADY 2035
 PGC ERICA LASSIE 2057 PGC ALLIANCE 187-9045
 PGC ERICA LASSIE 9025

Calving Ease	Birth Wt	Act Wn Wt	WW Ratio	365 Wt	YW Ratio	Adj Scrotal	Dam Production
★★	76	729	107	1120	107	35.7	4 WR 97
CED	BW	WW	YW	HP	MILK	SEN	
+2	+2.5	+68	+120	+16.8	+21	-27	
Marb EPD	REA EPD	Fat EPD	\$M	\$W	\$B	\$C	
+0.34	+0.44	+0.002	+59	+54	+122	+217	

A stylish Forge bull, that has performed well from weaning to yearling. Dam posts 4 BW @ 75# with a calving interval of 366 days. Ranks in the top 35% for RADG, DMI (30%), YH (25%), HP (10%), MW (30%), MH (25%), Claw (10%), Angle (30%), PAP (30%), Fat.

44 PGC Blueprint 3068

Bull Born: 02/13/23 Reg: 20806996 Tattoo: 3068
 CONNEALY CONFIDENCE PLUS# CONNEALY CONFIDENCE 0100#
WOODHILL BLUEPRINT# ELBANNA OF CONANGA 1209
 WOODHILL EVERGREEN Z291-B233 TEHAMA SIERRA CUT Z118
 WOODHILL EVERGREEN U6-Z291
 JMB TRACTION 292# SITS TOP GAME 561X#
PGC SHOESHONE GIRL 7080 JMB EMULOTA 013
 PGC SHOESHONE GIRL 2028 HOOVER DAM#
 PGC SHOESHONE GIRL 0104

Calving Ease	Birth Wt	Act Wn Wt	WW Ratio	365 Wt	YW Ratio	Adj Scrotal	Dam Production
★★	98	686	101	1032	98	31.7	5 WR 105
CED	BW	WW	YW	HP	MILK	SEN	
+1	+3.9	+86	+147	+8.7	+25	-42	
Marb EPD	REA EPD	Fat EPD	\$M	\$W	\$B	\$C	
+0.48	+0.94	-0.004	+41	+69	+161	+250	

Ranks in the top 4% for WW and top 10% for YW and the top 25% or better in the breed for RADG, MW, MH, CW, RE, \$F, \$W. Dam is a get it done kind of cow 5 BW @ 84 lbs, 5 WR @ 105, previous sons selling to Jordan Handy & Golden West Cattle Co. Granddam posts 5 BW @ 73#, WR @ 108, YR @ 114.

45 PGC Barricade 3074

Bull Born: 02/15/23 Reg: 20806999 Tattoo: 3074
 SITS STELLAR 726D# MOHNEN SUBSTANTIAL 272#
SITS BARRICADE 632F SITS PRIDE 200B
 SITS BARBARAMERE NELL 765D SITS SUPERIOR 10971
 SITS BARBARAMERE NELL 73T
 TEX PLAYBOOK 5437# BASIN PAYWEIGHT 1682#
PGC MS PATTIE 9021# RITA 1C43 OF 9M26 COMPLETE
 PGC MS IN FOCUS 1003 SITS GAME POINT 10128
 TOP NOTCH MS IN FOCUS 954

Calving Ease	Birth Wt	Act Wn Wt	WW Ratio	365 Wt	YW Ratio	Adj Scrotal	Dam Production
★★	92	730	111	1062	102	33.0	3 WR 110
CED	BW	WW	YW	HP	MILK	SEN	
+3	+4.0	+81	+138	+18.1	+27	-35	
Marb EPD	REA EPD	Fat EPD	\$M	\$W	\$B	\$C	
+0.54	+0.53	+0.050	+84	+67	+160	+292	

A thick made, Barricade powerhouse, out of a pretty Playbook cow. Dam posts 3 BW @ 80#, 3 WR @ 110, 3 YR @ 105. Granddam posts 9 BW @ 74, 9 WR @ 102 and made 4 sale bulls and 5 replacement females for the PGC herd. Ranks in the 25% or better for WW, YW, HP, CEM, MW, MH, Doc, Claw, Angle, PAP, CW, \$M, \$F, and \$C.

46 PGC True North 3071

Bull Born: 02/14/23 Reg: 20806998 Tattoo: 3071
 S A V RAINFALL 6846 COLEMAN CHARLO 0256#
SQUARE B TRUE NORTH 8052 S A V BLACKCAP MAY 4136
 ELBANNA OF CONANGA 1209 CONNEALY CONSENSUS#
 ELBASTA OF CONANGA 9703
 S CHISUM 6175# S ALLIANCE 3313
PGC NEW DESIGN GIRL 3063 S GLORIA 464#
 PGC NEW DESIGN GIRL 0136 SHIPWHEEL CHINOOK#
 PGC NEW DESIGN GIRL 7059

Calving Ease	Birth Wt	Act Wn Wt	WW Ratio	365 Wt	YW Ratio	Adj Scrotal	Dam Production
★★★	82	620	95	1006	96	33.4	9 WR 101
CED	BW	WW	YW	HP	MILK	SEN	
+7	+0.6	+61	+109	+10.4	+30	+2	
Marb EPD	REA EPD	Fat EPD	\$M	\$W	\$B	\$C	
+0.84	+0.42	+0.084	+81	+68	+140	+263	

A quiet and stylish True North bull, out of a proven cow. Dam posts 9 BW @ 73#, 9 WR @ 101, with a 363 day calving interval. Granddam posted 9 BW @ 76#, 8 WR @ 99, and a 365 day calving interval.

47 PGC Authentic 3082

Bull Born: 02/16/23 Reg: 20804294 Tattoo: 3082
 SITS STELLAR 726D# MOHNEN SUBSTANTIAL 272#
PGC AUTHENTIC 0087 SITS PRIDE 200B
 PGC MISS EXPAND 663-8116# JANSSEN WYATT EARP 5110
 PGC MISS EXPAND 663-2054
 S A V BRUISER 9164# S A V BISMARCK 5682#
PGC LADY ACE 5054 S A V MISS BOBBIE 7463#
 PGC LADY ACE 9028# MYTTY IN FOCUS#
 PGC LADY ACE 7043

Calving Ease	Birth Wt	Act Wn Wt	WW Ratio	365 Wt	YW Ratio	Adj Scrotal	Dam Production
★★★	86	665	99	1046	100	34.8	6 WR 100
CED	BW	WW	YW	HP	MILK	SEN	
+6	+2.0	+63	+110	+13.9	+30	-15	
Marb EPD	REA EPD	Fat EPD	\$M	\$W	\$B	\$C	
+0.25	+0.54	+0.024	+73	+64	+119	+227	

A correct and balanced bull out of our exciting new AI sire, PGC Authentic 0087 and a solid Bruiser cow. Authentic is a Stellar son, out of PGC donor 8116, and transmits quiet temperament, easy fleshing ability, correctness of structure and that traditional "Angus" eye appeal. Dam posts 7 BW @ 77#, 7 WR @ 100 and a 363 day calving interval.

48

PGC Boone 3510

Bull Born: 02/06/23 Reg: 20804319 Tattoo: 3510

CONNEALY CONFIDENCE PLUS#
CIRCLE L BOONE
RB LADY DENVER 167-428

CONNEALY CONFIDENCE 0100#
ELBANNA OF CONANGA 1209
EXAR DENVER 2002B#
R B LADY PARTY 167-305
BASIN PAYWEIGHT 1682#
RITA 1C43 OF 9M26 COMPLETE
CONNEALY CAPITALIST 028#
PGC MS BARBARAMERE 4507

ANGUS
Claw Set
6
Foot Angle
6

TEX PLAYBOOK 5437#
PGC MS BARBARAMERE 9085
PGC MS BARBARAMERE 6504

Calving Ease	Birth Wt	Act Wn Wt	WW Ratio	365 Wt	YW Ratio	Adj Scrotal	Dam Production
★★★	80	686	102	1016	97	36.7	3 WR 102
CED	BW	WW	YW	HP	MILK	\$EN	
+8	+1.8	+73	+118	+15.7	+26	-5	
Marb EPD	REA EPD	Fat EPD	\$M	\$W	\$B	\$C	
+0.37	+0.86	+0.027	+92	+75	+128	+258	

A calving ease bull out of Circle L Boone, and a young Playbook dam. She posts 3 BW @ 74#, WR @ 102, YR @ 102 and calved first cycle again in 2024. Lot 48 ranks in the top 35% of the breed for CED, WW (25%), HP (15%), CEM, \$EN (30%), Claw, Angle (20%), RE (25%), \$M (4%), \$W (15%).



Lot 49

50

PGC Motive 8010-3095

Bull Born: 02/19/23 Reg: 20804298 Tattoo: 3095

SOO LINE MOTIVE 9016#
PGC MOTIVE 8010
PGC MS EXT 3100

HF KODIAK 5R
TLA BEAUTY 5R
CAR EFFICIENT 534#
PGC EXT 677
SITZ UPSIDE 547W#
TOP NOTCH ND 878 603#
SHIPWHEEL CHINOOK#
D C M RALLY MGR 442

ANGUS
Claw Set
6
Foot Angle
6

PGC UPSIDE 2052
PGC RALLY MGR 6172
PGC RALLY MGR 1017#

Calving Ease	Birth Wt	Act Wn Wt	WW Ratio	365 Wt	YW Ratio	Adj Scrotal	Dam Production
★★★	80	629	94	994	95	34.4	4 WR 95
CED	BW	WW	YW	HP	MILK	\$EN	
+7	-0.7	+42	+72	+12.0	+23	+16	
Marb EPD	REA EPD	Fat EPD	\$M	\$W	\$B	\$C	
+0.53	+0.35	+0.051	+70	+48	+106	+207	

Lot 50 is a heifer bull out of a proven cow at PGC. Dam posts 5 BW @ 78# and is an exceptional mother, calves show exceptional vigor. She has already calved first cycle in 2024 with solid calving book scores.



Lot 51

49

PGC Stellar 3029

Bull Born: 02/06/23 Reg: 20806987 Tattoo: 3029

MOHNEN SUBSTANTIAL 272#
SITZ STELLAR 726D#
SITZ PRIDE 200B

BENFIELD SUBSTANCE 8506#
MOHNEN GLYN MAWR ELBA 1758
CONNEALY FINAL PRODUCT#
SITZ PRIDE 308Y#
A A R MATRIX 1901
PGC BUSH LADY 2035
CAR EFFICIENT 534#
PGC NEW DESIGN GIRL 0156

ANGUS
Claw Set
6
Foot Angle
6

PGC MATRIX 5172
PGC BARBARA JILL 0154
PGC EFFICIENT GIRL 3092#

Calving Ease	Birth Wt	Act Wn Wt	WW Ratio	365 Wt	YW Ratio	Adj Scrotal	Dam Production
★★★★	62	614	95	1059	101	34.0	1 WR 95
CED	BW	WW	YW	HP	MILK	\$EN	
+11	-1.4	+64	+120	+10.1	+35	-25	
Marb EPD	REA EPD	Fat EPD	\$M	\$W	\$B	\$C	
+0.80	+0.44	+0.027	+65	+70	+154	+265	

Heifer bull deluxe, with a pedigree packed with PGC maternal greats! Young Matrix dam's Paternal granddam 6 WR @ 103, Maternal granddam 7 WR @ 111. Ranks in the top 35% or better for CED, BW, YH, SC, CEM, Milk, MH, Doc, Claw, PAP, HS, CW, Marb, \$F, \$B, \$W, \$G.



51

PGC Authentic 3060

Bull Born: 02/12/23 Reg: 20804290 Tattoo: 3060

SITZ STELLAR 726D#
PGC AUTHENTIC 0087
PGC MISS EXPAND 663-8116#

MOHNEN SUBSTANTIAL 272#
SITZ PRIDE 200B
JANSSEN WYATT EARP 5110
PGC MISS EXPAND 663-2054
A A R MATRIX 1901
PGC BUSH LADY 2035
PGC UPSIDE 2052
PGC RALLY MGR 1017#

ANGUS
Claw Set
5
Foot Angle
5

PGC MATRIX 5172
PGC RALLY MGR 0163
PGC RALLY MGR 6172

Calving Ease	Birth Wt	Act Wn Wt	WW Ratio	365 Wt	YW Ratio	Adj Scrotal	Dam Production
★★★★	74	602	95	1052	101	34.7	2 WR 97
CED	BW	WW	YW	HP	MILK	\$EN	
+12	-0.4	+58	+107	+14.1	+21	-6	
Marb EPD	REA EPD	Fat EPD	\$M	\$W	\$B	\$C	
+0.39	+0.26	+0.041	+74	+54	+90	+191	

A sleep all night heifer bull, ranking in the top 25% or better for CED, BW, HP, \$EN, Claw, Angle, PAP, and \$M. Granddam is dam of Lot 50.





52 Bull Born: 02/02/23 Reg: 20804289 Tattoo: 306

MOHNEN SUBSTANTIAL 272#
SITZ STELLAR 726D#
 SITZ PRIDE 200B

BDAR COOL C65
ABP LADY UPWARD 140
 ABP LADY UPWARD 621

BENFIELD SUBSTANCE 8506#
 MOHNEN GLYN MAWR ELBA 1758
 CONNEALY FINAL PRODUCT#
 SITZ PRIDE 308Y#

CONNEALY COOL 39L#
 BDAR PRIDE 227Z#
 KEL MCC UPWARD 8383 2308
 TOP NOTCH LADY MAGNITUD 99#



Calving Ease	Birth Wt	Act Wn Wt	WW Ratio	365 Wt	YW Ratio	Adj Scrotal	Dam Production
★★★★	76	631	107	1019	98		1 WR 107
CED	BW	WW	YW	HP	MILK	SEN	
+10	+0.0	+60	+106	+13.5	+22	-6	
Marb EPD	REA EPD	Fat EPD	\$M	\$W	\$B	\$C	
+0.33	+0.14	+0.052	+80	+58	+101	+211	

Gentle moderate framed heifer bull that is the friendliest bull in the pen. FYI Dam's sire parentage is pending, should be back by the sale. FED @ Laverdure Ranch.



53 Bull Born: 02/09/23 Reg: 20811207 Tattoo: 3042

CONNEALY CONFIDENCE PLUS#
WOODHILL BLUEPRINT#
 WOODHILL EVERGREEN Z291-B233

BDAR COOL C65
PGC ALLIANCE LADY 1176
 PGC ALLIANCE LADY 7032

CONNEALY CONFIDENCE 0100#
 ELBANNA OF CONANGA 1209
 TEHAMA SIERRA CUT Z118
 WOODHILL EVERGREEN U6-Z291

CONNEALY COOL 39L#
 BDAR PRIDE 227Z#
 H A IMAGE MAKER 0415#
 TOP NOTCH ALLIANCE LADY 1204



Calving Ease	Birth Wt	Act Wn Wt	WW Ratio	365 Wt	YW Ratio	Adj Scrotal	Dam Production
★★★★	62	670	100	1113	100	32.6	1 WR 100
CED	BW	WW	YW	HP	MILK	SEN	
+12	-1.4	+64	+116	+10.2	+40	-17	
Marb EPD	REA EPD	Fat EPD	\$M	\$W	\$B	\$C	
+0.42	+1.08	-0.005	+71	+77	+155	+272	

Another sleep all night heifer bull with tremendous depth of body. His dam is a first calf heifer out of our rock solid BDAR Cool C65 herd sire. She bred back and has already calved first cycle this year. Granddam posts 4 WR @ 110. He ranks in the top 35% of the breed for CED (10%), BW (10%), RADG (20%), DMI (15%), CEM, Milk (2%), Doc (10%), Claw (30%), RE (5%), Fat (30%), \$M (30%), \$F (20%), \$B, \$W (10%), \$C (30%).





PGC Sale 2023
Thank you!



Heart of the Hi-Line

~ Commercial Female Sale ~



Congratulations to C.J. & Katie Hanson and family on their first inaugural female sale, looking forward to the future!

Featured Genetics from Shipwheel Cattle, Whistling Winds Angus and Peterson Grain & Cattle

Visit with us about future consignments!

Watch for the 2024 Sale Date to be announced

Heifer Calves

Our goal here at PGC is to produce a FUNCTIONAL, DURABLE, FERTILE mother cow. Cows that make our lives easier! We are striving to produce a VIGOROUS calf, adding birth weight back into our cattle without losing calving ease - pounds on the ground make calves more cold hardy and gives them a head start to weaning. Our cattle need to have a BALANCED phenotype (leg, foot, udder, topline) with added bone to ensure longevity, performance, and the ability to travel successfully from the Milk River to the Bear Paws and Sweet Grass Hills. Our cow herd has been challenged by our environment and we produce cattle that are refined by Mother Nature. As always, our sale heifers have been selected by pedigree - with a predictable and functional dam and/or granddam - and then by performance and phenotype. We hope you find a good one to enjoy for years to come!



57 PGC Rassi Upside 3002

Cow Born: 01/31/23 Reg: 20894534 Tattoo: 3002

S A V RAINFALL 6846
SQUARE B TRUE NORTH 8052
 ELBANNA OF CONANGA 1209

SITZ STELLAR 726D#
PGC RASSI UPSIDE 1002
 PGC RASSI UPSIDE 8006

COLEMAN CHARLO 0256#
 S A V BLACKCAP MAY 4136
 CONNEALY CONSENSUS#
 ELBASTA OF CONANGA 9703
 MOHNEN SUBSTANTIAL 272#
 SITZ PRIDE 200B
 SOO LINE MOTIVE 9016#
 PGC RASSI UPSIDE 6029

ANGUS
Claw Set
5
Foot Angle
5

Birth Wt	205 Wt	WW Ratio	365 Wt	YW Ratio	Dam Production	
50	582	102	736	103	1 WR 102	
CED	BW	WW	YW	HP	MILK	SEN
+9	-1.5	+68	+123	+11.4	+25	-8
Marb EPD	REA EPD	Fat EPD	\$M	\$W	\$B	\$C
+0.75	+0.64	+0.074	+74	+71	+147	+265

A beautiful True North heifer out of a Stellar first calf heifer, backed by an excellent Motive granddam. Ranks in the top 35% of the breed for CED (30%), BW (10%), WW (30%), YW (30%), RADG, \$EN, Claw (15%), Angle (30%), PAP (25%), HS (3%), \$M (25%), \$W (15%). Granddam posts 4 BW @ 83#, WR @ 106, YR @ 111.



58 PGC New Design Girl 3023

Cow Born: 02/06/23 Reg: 20894531 Tattoo: 3023

MOHNEN SUBSTANTIAL 272#
SITZ STELLAR 726D#
 SITZ PRIDE 200B

TEX PLAYBOOK 5437#
PGC NEW DESIGN GIRL 9103
 PGC NEW DESIGN GIRL 3063

BENFIELD SUBSTANCE 8506#
 MOHNEN GLYN MAWR ELBA 1758
 CONNEALY FINAL PRODUCT#
 SITZ PRIDE 308Y#
 BASIN PAYWEIGHT 1682#
 RITA 1C43 OF 9M26 COMPLETE
 S CHISUM 6175#
 PGC NEW DESIGN GIRL 0136

ANGUS
Claw Set
5
Foot Angle
5

Birth Wt	205 Wt	WW Ratio	365 Wt	YW Ratio	Dam Production	
78	588	103	710	100	3 WR 101	
CED	BW	WW	YW	HP	MILK	SEN
+4	+2.9	+75	+133	+9.4	+23	-26
Marb EPD	REA EPD	Fat EPD	\$M	\$W	\$B	\$C
+0.67	+0.59	+0.029	+61	+62	+152	+258

A deep bodied, sweet tempered Stellar heifer out of a really nice Playbook cow. Dam posts 3 BW @ 77 lbs, WR @ 101, YR @ 105 with a 365 day calving interval. Granddam posts 9 BW @ 73#, WR @ 101. Lot 58 ranks in the top 35% of the breed for WW (20%), YW (20%), RADG (30%), SC (30%), MW (30%), MH (20%), Doc (5%), Claw (15%), Angle, PAP (2%), HS (20%), \$F (25%).



Bull Videos available at
www.NorthernLivestockVideo.com
 with a direct link to each Lot by
 scanning their QR Code.



61 Cow Born: 02/12/23 Reg: 20894535 Tattoo: 3061

S A V RAINFALL 6846
SQUARE B TRUE NORTH 8052
 ELBANNA OF CONANGA 1209

COLEMAN CHARLO 0256#
 S A V BLACKCAP MAY 4136
 CONNEALY CONSENSUS#
 ELBASTA OF CONANGA 9703

CONNEALY CAPITALIST 028#
PGC LADY IDA 8091
 PGC LADY IDA 2042

S A V FINAL ANSWER 0035#
 PRIDES PITA OF CONANGA 8821
 NICHOLS EXTRA K205#
 WW LADY IDA 6534#

ANGUS
 Claw Set **5**
 Foot Angle **6**

Birth Wt	205 Wt	WW Ratio	365 Wt	YW Ratio	Dam Production	
90	580	102	727	102	4 WR	101
CED	BW	WW	YW	HP	MILK	\$EN
+1	+4.1	+74	+123	+10.9	+11	-4
Marb EPD	REA EPD	Fat EPD	\$M	\$W	\$B	\$C
+0.55	+0.80	-0.02	+61	+51	+147	+252

A super feminine True North daughter out of a proven Capitalist dam. We love the True North's we have in production, they carry extra eye-appeal with a refined thickness, quiet temperament and excellent maternal attributes. Dam posts 4 BW @ 80#, WR 101, YR @ 106. A full sister to Lot 61, is one of Casey's favorite True North heifers to calve this spring.

59 Cow Born: 02/07/23 Reg: 20894540 Tattoo: 3026

CONNEALY CONFIDENCE PLUS#
WOODHILL BLUEPRINT#
 WOODHILL EVERGREEN Z291-B233

CONNEALY CONFIDENCE 0100#
 ELBANNA OF CONANGA 1209
 TEHAMA SIERRA CUT Z118
 WOODHILL EVERGREEN U6-Z291

BDAR COOL C65
PGC I87 LADY 1170
 PGC I87 LADY 5056

CONNEALY COOL 39L#
 BDAR PRIDE 227Z#
 SITZ UPSIDE 547W#
 TOP NOTCH I87 LADY 906#

ANGUS
 Claw Set **5**
 Foot Angle **5**

Birth Wt	205 Wt	WW Ratio	365 Wt	YW Ratio	Dam Production	
56	596	105	730	103	1 WR	105
CED	BW	WW	YW	HP	MILK	\$EN
+9	+0.6	+75	+126	+10.8	+30	-28
Marb EPD	REA EPD	Fat EPD	\$M	\$W	\$B	\$C
+0.61	+0.72	+0.043	+61	+76	+145	+249

Lot 59 is a feminine Blueprint, out of a young dam sired by our prolific BDAR Cool C65 bull. Her pedigree is loaded with proven performers in our environment. Dam has already calved first cycle in 2024, posting great calving book scores for udder, temperament and feet. Granddam posts 5 BW @ 78#, WR @ 101. Lot 59 ranks in the top 35% of the Angus breed for CED (30%), BW, WW (20%), YW (25%), CEM, Milk (25%), MW, MH, Claw (30%), CW (30%), \$F, \$W (10%).



60 Cow Born: 02/09/23 Reg: 20894541 Tattoo: 3039

CONNEALY CONFIDENCE PLUS#
WOODHILL BLUEPRINT#
 WOODHILL EVERGREEN Z291-B233

CONNEALY CONFIDENCE 0100#
 ELBANNA OF CONANGA 1209
 TEHAMA SIERRA CUT Z118
 WOODHILL EVERGREEN U6-Z291

PGC RELOAD 813
PGC BEAUTY 1061
 PGC BEAUTY 6037

SITZ RELOAD 411C#
 OFC FINAL PRODUCT 1233
 PA POWER TOOL 9108#
 PGC BEAUTY 2007

ANGUS
 Claw Set **5**
 Foot Angle **6**

Birth Wt	205 Wt	WW Ratio	365 Wt	YW Ratio	Dam Production	
66	589	104	731	103	1 WR	104
CED	BW	WW	YW	HP	MILK	\$EN
+12	-0.7	+66	+112	+14.9	+33	-1
Marb EPD	REA EPD	Fat EPD	\$M	\$W	\$B	\$C
+0.48	+0.67	+0.009	+84	+79	+125	+246

Another chance at a thick made, beautiful Blueprint heifer. Lot 60 carries one of the nicest "momma making" number profiles of our offering this year - with her CED, BW, Milk, \$EN, \$M and \$W ALL in the top 10-20% of the Angus breed. Dam is a young Reload 813 cow, with great scores for udder, temperament, and claw/angle. Granddam was a sweetheart Power Tool cow, and Great Granddam was a favorite Upside making 4 sale bulls for PGC and Lot 60's Granddam.

62 Cow Born: 02/19/23 Reg: 20894537 Tattoo: 3524

CONNEALY CAPITALIST 028#
PGC FORGE
 PGC SHOESHONE GIRL 4106#

S A V BRUISER 9164#
PGC MS BARBARAMERE 4507
 CP BARBARAMERE 1504#

S A V FINAL ANSWER 0035#
 PRIDES PITA OF CONANGA 8821
 SITZ UPSIDE 547W#
 PGC SHOSHONE GIRL 0229#

S A V BISMARCK 5682#
 S A V MISS BOBBIE 7463#
 PGC IN FOCUS 8041
 HOLMAN BARBARAMERE R505

ANGUS
 Claw Set **5**
 Foot Angle **5**

Birth Wt	205 Wt	WW Ratio	365 Wt	YW Ratio	Dam Production	
82	566	99	731	103	7 WR	103
CED	BW	WW	YW	HP	MILK	\$EN
+2	+4.1	+85	+146	+13.6	+15	-44
Marb EPD	REA EPD	Fat EPD	\$M	\$W	\$B	\$C
+0.57	+0.70	-0.007	+47	+55	+158	+252

A deep bodied Forge with the capacity of her proven Brusier dam. Ranks in the top 30% of the breed for WW (5%), YW (10%), RADG (10%), YH, HP CEM (25%), MW (3%), MH (15%), Claw (10%), Angle, CW (20%), Fat, \$F (15%), \$B. Dam has been rock solid - 8 BW @ 74#, WR @ 103, YR @ 99. Great Granddam on the top and bottom side are Pathfinders!

63**PGC Rally MGR Lady 3097**

Cow Born: 02/20/23 Reg: 20894529 Tattoo: 3097

SITZ STELLAR 726D#
PGC AUTHENTIC 0087
PGC MISS EXPAND 663-8116#MOHNEN SUBSTANTIAL 272#
SITZ PRIDE 200B
JANSSEN WYATT EARP 5110
PGC MISS EXPAND 663-2054
BOYD NEW DAY 8005#
G D A R MISS WIX 474#
GARDENS PRIME STAR#
D C M RALLY MGR 442**ANGUS**
Claw Set
5
Foot
Angle
5GDAR GAME DAY 449#
PGC RALLY MGR LADY 4119
PGC RALLY MGR LADY 0134

Birth Wt	205 Wt	WW Ratio	365 Wt	YW Ratio	Dam Production	
84	538	95	724	102	7 WR	102
CED	BW	WW	YW	HP	MILK	\$EN
+1	+3.5	+75	+129	+14.3	+29	-22
Marb EPD	REA EPD	Fat EPD	\$M	\$W	\$B	\$C
+0.35	+0.76	+0.017	+71	+68	+140	+253

A sweetheart of a heifer out of our exciting new sire, PGC Authentic 0087. Lot 63's Game Day Dam has been a reliable producer at PGC - 8 BW @ 84#, WR @ 99, YR @ 104 with a 366 day calving interval. Great Granddam posts 7 BW @ 77#, WR @ 104, YR @ 106 and a 364 day calving interval. Lot 63 ranks in the top 30% of the breed for WW (20%), YW (25%), HP (25%), Milk, Claw (3%), Angle (10%), HS (10%), CW, \$M, \$F (25%), \$W (25%).

**64****CP Lady Blackbird 3526**

Cow Born: 02/21/23 Reg: 20894536 Tattoo: 3526

CONNEALY CAPITALIST 028#
PGC FORGE
PGC SHOESHONE GIRL 4106#S A V FINAL ANSWER 0035#
PRIDES PITA OF CONANGA 8821
SITZ UPSIDE 547W#
PGC SHOSHONE GIRL 0229#
SITZ TOP GAME 561X#
JMB EMULOTA 013
KEL MCC IMAGE MAKER ML 853
HOLMAN BLACKBIRD 733**ANGUS**
Claw Set
6
Foot
Angle
6JMB TRACTION 292#
CP LADY BLACKBIRD 5508
CP LADY BLACKBIRD 2508

Birth Wt	205 Wt	WW Ratio	365 Wt	YW Ratio	Dam Production	
62	563	99	704	99	7 WR	100
CED	BW	WW	YW	HP	MILK	\$EN
+13	-1.7	+63	+105	+14.2	+31	-11
Marb EPD	REA EPD	Fat EPD	\$M	\$W	\$B	\$C
+0.36	+0.19	+0.037	+74	+72	+101	+205

A feminine Forge out of a reliable Traction cow. Dam posts 7 BW @ 69#, WR @ 100, YR @ 101 with a 363 day calving interval and has calved first cycle again in 2024 with perfect calving book scores. Lot 64 ranks in the top 25% of the breed for CED (10%), BW (4%), SC, HP, CEM (15%), Milk (20%), Claw (20%), Angle (30%), PAP (5%), \$M, \$W (15%).

66**PGC Gracie 3116**

Cow Born: 02/28/23 Reg: 20894530 Tattoo: 3116

WOODHILL BLUEPRINT#
PGC BLUEPRINT 104
ABP MEATPACKIN MAMA 901CONNEALY CONFIDENCE PLUS#
WOODHILL EVERGREEN Z291-B233
MILL BAR HICKOK 7242#
TOPNOTCH MEATPACKIN MAMA 3116
SOO LINE MOTIVE 9016#
CAR MISS TARESA 464#
PGC LONG GEORGE 3116
KEL MCC GRACIE 0010-612#**ANGUS**
Claw Set
5
Foot
Angle
5CAR MOTIVE 512
PGC GRACIE 9207
PGC GRACIE 0010-6079

Birth Wt	205 Wt	WW Ratio	365 Wt	YW Ratio	Dam Production	
80	581	102	723	102	3 WR	98
CED	BW	WW	YW	HP	MILK	\$EN
+0	+2.4	+74	+124	+11.7	+22	-24
Marb EPD	REA EPD	Fat EPD	\$M	\$W	\$B	\$C
+0.27	+0.59	+0.033	+59	+64	+117	+211

A pretty Blueprint 104 out of sweet Motive 512 cow that is on her 4th calf with a 370 day calving interval. She posts 3 BW 84#, WR 98, YR 99. Lot 66 ranks in the top 30% for WW (20%), YW, DMI (25%), Claw (20%), Angle (20%), PAP (20%), \$W.

**65****PGC New Design 3104**

Cow Born: 02/22/23 Reg: 20894538 Tattoo: 3104

KM BROKEN BOW 002#
PGC BROKEN BOW 9048
PGC ALLIANCE LADY 7032SUMMITCREST COMPLETE 1P55#
SUMMITCREST PRINCESS 0P12#
H A IMAGE MAKER 0415#
TOP NOTCH ALLIANCE LADY 1204
S A V FINAL ANSWER 0035#
PRIDES PITA OF CONANGA 8821
KEL MCC IMAGE MAKER ML 853
PGC NEW DESIGN 667**ANGUS**
Claw Set
5
Foot
Angle
5CONNEALY CAPITALIST 028#
PGC NEW DESIGN 8063
PGC NEW DESIGN 2139

Birth Wt	205 Wt	WW Ratio	365 Wt	YW Ratio	Dam Production	
70	574	101	689	97	4 WR	104
CED	BW	WW	YW	HP	MILK	\$EN
+6	+0.6	+68	+111	+12.6	+32	-20
Marb EPD	REA EPD	Fat EPD	\$M	\$W	\$B	\$C
+0.92	+0.82	+0.014	+71	+74	+151	+267

A super thick Broken Bow 9048 heifer, out of a great Capitalist dam - posting 4 BW @ 75#, WR @ 104, YR @ 103 - she has already calved first cycle in 2024 with perfect calving book scores. Lot 65 ranks in the top 35% for BW, WW, SC (3%), CEM, Milk (15%), Claw (10%), HS (2%), Marb (30%), RE (30%), \$M (30%), \$W (15%), \$G (25%), \$C.



67

PGC Bush Lady 3120

Cow Born: 03/04/23 Reg: 20894539 Tattoo: 3120

TEX PLAYBOOK 5437#
PGC PLAYBOOK 916
ABP ELINE 230

BASIN PAYWEIGHT 1682#
RITA 1C43 OF 9M26 COMPLETE
TOP NOTCH BIG BUD
LEACHMAN ELINE 1058
CONNEALY CONFIDENCE 0100#
BDAR LASS 266Z
GARDENS PRIME STAR#
TOP NOTCH BUSH LADY 6236

ANGUS
Claw Set
6
Foot Angle
6

BDAR CONFIDENCE B492
PGC BUSH LADY 8172
PGC BUSH LADY 0130

Birth Wt	205 Wt	WW Ratio	365 Wt	YW Ratio	Dam Production	
76	557	98	679	96	4	WR 98
CED	BW	WW	YW	HP	MILK	\$EN
+10	-0.4	+63	+101	+15.4	+39	-7
Marb EPD	REA EPD	Fat EPD	\$M	\$W	\$B	\$C
+1.02	+0.61	+0.052	+87	+80	+154	+287

An attractive Playbook 916 heifer, out of a prolific cow line at PGC. Dam posts four calves in a 369 day calving interval, and calved her 5th in 2024 with perfect calving book scores. Granddam posts 9 BW @ 75#, WR @ 102. Lot 67 ranks in the top 30% for CED (20%), BW (20%), DMI (25%), HP (15%), CEM (5%), Milk (2%), \$EN, Doc (15%), HS, Marb (25%), \$M (4%), \$W (10%), \$G (25%), \$C (20%).



68

CP Eleanor 3531

Cow Born: 03/10/23 Reg: 20894528 Tattoo: 3531

MATH BRAVO 5079
MATH BRAVO 591
CM FOREVER LADY 9501

COLEMAN BRAVO 6313#
CM FOREVER LADY Y9110
GDAR LOAD UP 7104#
CM FOREVER LADY Y9110
HA OUTSIDE 3008
HA BLACKCAP LADY 1602#
CONNEALY LEAD ON#
TOP NOTCH ND 878 603#

ANGUS
Claw Set
5
Foot Angle
5

HA COWBOY UP 5405#
CP ELEANOR 9573
PGC NEW DESIGN 562#

Birth Wt	205 Wt	WW Ratio	365 Wt	YW Ratio	Dam Production	
60	553	97	727	102	3	WR 87
CED	BW	WW	YW	HP	MILK	\$EN
+12	-2.5	+69	+114	+10.1	+23	-14
Marb EPD	REA EPD	Fat EPD	\$M	\$W	\$B	\$C
-.30	+0.57	-.015	+71	+72	+75	+168

A very feminine Math Bravo 591 daughter, with a packed maternal pedigree - granddam's on the top and bottom sides are Math, Hinman, and PGC donors respectively. Lot 68 ranks in the top 35% of the breed for CED (10%), BW (2%), WW, DMI, SC (10%), Doc (20%), Claw (10%), Angle (10%), Fat (20%), \$M, \$W (15%).

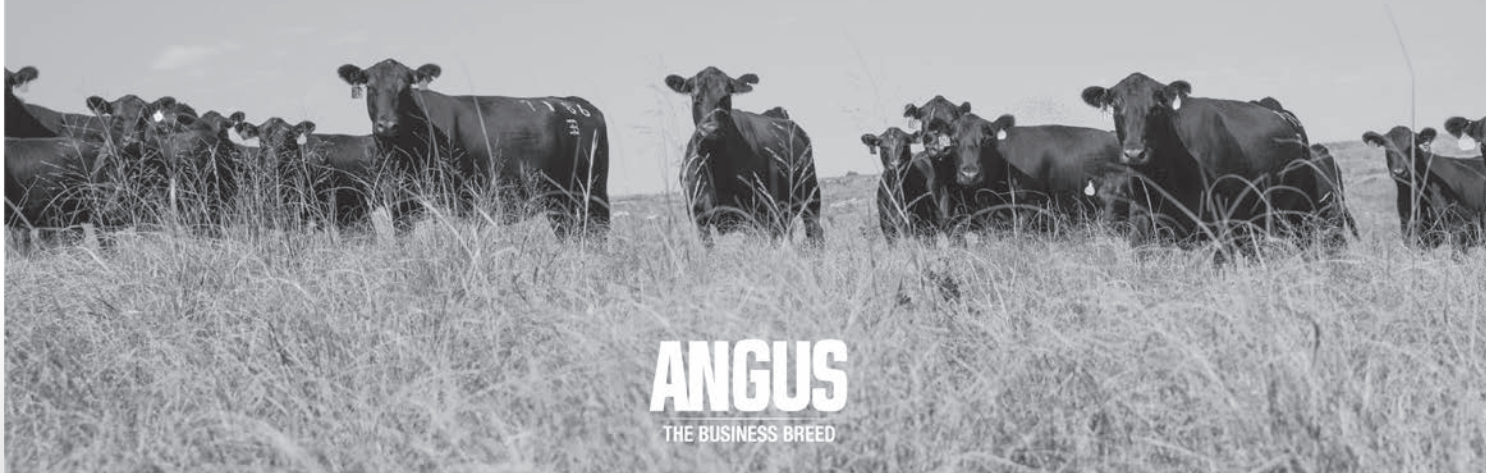


DEDICATED. COMMITTED.

WHOLE HERD REPORTING WITH MATERNALPLUS

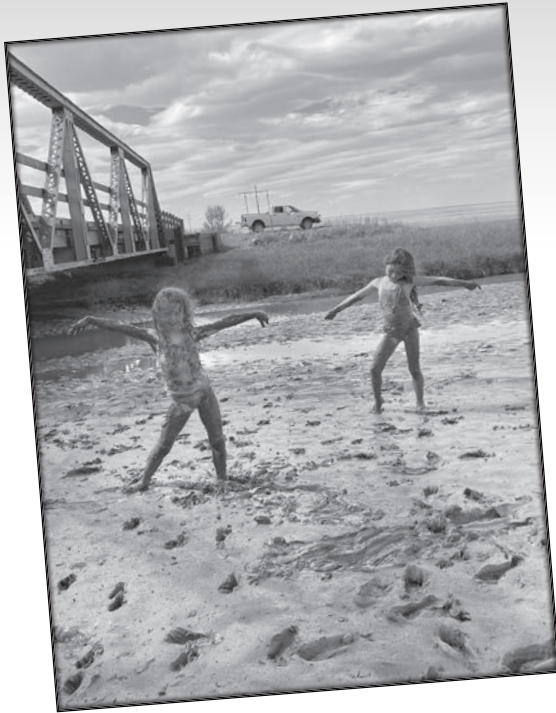


Raising quality Angus cattle takes **COMMITMENT**. We take that seriously, which is why we are **DEDICATED** to not only improve our genetics, but also prepare for the future of the Angus breed. We believe that commitment starts with MaternalPlus. Contact AGI at 816-383-5100 or agi@angus.org for more information.



ANGUS

THE BUSINESS BREED



FRESNO TAVERN
 406-399-3580



**YOUR
 QUESTIONS
 COVERED.**



Products and answers that work®

Managing a successful cowherd can be challenging. However, getting the right nutrition into your cattle shouldn't be one of those challenges. The Hubbard Beef Team is here to support you by delivering proven nutrition technologies and recommendations.

Rest assured, we've got you covered.

Milk River Ag

Ryan Jensen

406-399-1113



For more information about Hubbard Beef solutions visit:
hubbardfeeds.com



FOR A
"BUCKING"
Good Time!
Shanty
Bar

It's RAM Truck month at Jamieson Motors in Chinook.

The same family owned dealership since 1939.

406-357-2470

www.JamiesonMotors.net

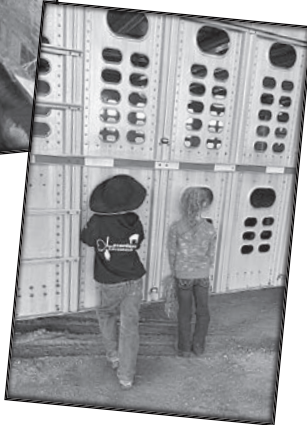
115 HWY 2 West, Chinook



RAM Trucks, the only truck to earn the Motor Trend Magazine Truck of the Year Award for 3 years in a row.



32116 Rd 230 N
Havre, MT 59501



1. Head North out of Havre on Wildhorse 232
2. Turn North after mile marker 28
3. Drive 3 miles on gravel to the sale barn.



Thank you!

For all your help every year!

Austin Buzanowski and his crew for a great job trimming...

Meghan Holt & Alisha Hofman for helping on picture day...

Bo Bevis, Northern Livestock Video Auction for videoing the bulls...

Lance Johnson & crew for preparing the beef...

Kody & Gabriel Peterson and Kyle & Kodi Peterson and their families for your help & support ALL YEAR LONG in everything we do...

Christy Smith for pictures and all the things sale day...

Karene Faber and Sara Edgar for helping at the sale...

Taylor and Peyton Springer for the support and lending a hand on sale day...

Mark Larsen for working the Brand Inspection table...

The Sattoriva crew for keeping track of the "next generation" of PGC on sale day...

All of our wonderful neighbors and friends for their help, laughter and friendship...

Ray Michaels & family. Kelly, Tasha & Eli Hartwell, and our Cut Bank family...

AND all the great help we've had from MSU-Northern students past and present: Raini Jonson, Braiden Bilden...

AND Nola for preparing the sale day meal, definitely worth the trip Sale Day!!!



PGC Authentic 0087

Bull Born: 02/17/20 Reg Number: 19846565 Tattoo: 0087

MOHNEN SUBSTANTIAL 272#
SITZ STELLAR 726D
SITZ PRIDE 200B

BENFIELD SUBSTANCE 8506#
MOHNEN GLYN MAWR ELBA 1758
CONNEALY FINAL PRODUCT#
SITZ PRIDE 308Y#

JANSSEN WYATT EARP 5110
PGC MISS EXPAND 663-8116#
PGC MISS EXPAND 663-2054

S A V RESOURCE 1441#
S A V MADAME PRIDE 8827
SITZ UPSIDE 547W#
PGC EXPAND 663#

CED	BW	WW	YW	HP	MILK	\$EN
+7	+1.1	+63	+122	+10.6	+20	-11
Marb EPD	REA EPD	Fat EPD	\$M	\$W	\$B	\$C
+0.47	+0.34	+0.039	+69	+54	+123	+229

PGC Authentic was a top seller in our 2021 sale, purchased by Clayton Hofeldt/Bar 9 Ranch & Stephen and Lindsay Boyce. A stylish Sitz Stellar bull out of an outstanding young cow in the PGC herd, that went Pathfinder as a 4 year old cow - posting 3 @ 79 BW, 3 @ 105 nursing ratio, and 3 @ 107 yearling ratio, with a 361 day average calving interval. She is an easy fleshing, docile, beautiful mother cow with sturdy structure and perfect feet, backed by an outstanding cow family in the PGC herd. His full sister has calved first cycle for her first two years in production, is an excellent momma and posts perfect calving book scores. Authentic is easy going, stylish and correct, with a balanced EPD profile and fertility. His dam entered our donor cow pen last spring, producing 37 embryos and breeding back in our calving window for 2024. We are using Authentic heavily in our A.I. program at PGC. Semen is available at ORigen.

PGC Authentic 0087



Eligible for
Heart of the Hi-Line
Breeding Projects



PGC Latitude 49

Bull Born: 02/15/21 Reg Number: + 20194090 Tattoo: 1065

S A V RAINFALL 6846
SQUARE B TRUE NORTH 8052
ELBANNA OF CONANGA 1209

COLEMAN CHARLO 0256#
S A V BLACKCAP MAY 4136
CONNEALY CONSENSUS#
ELBASTA OF CONANGA 9703

SITZ UPSIDE 547W#
PGC SHOESHONE GIRL 4106#
PGC SHOESHONE GIRL 0229#

SITZ UPWARD 307R#
SITZ EMMA 27T
PGC MAGNITUDE 8060
D C M SHOESHONE 518 572#

CED	BW	WW	YW	HP	MILK	\$EN
+10	-0.2	+70	+127	+9.7	+28	-14
Marb EPD	REA EPD	Fat EPD	\$M	\$W	\$B	\$C
+0.77	+0.53	+0.029	+64	+72	+162	+275

PGC Latitude 49 was a top seller in our 2022 sale, purchased by Cody Math/Math Angus. An exceptionally thick made heifer bull sired by Square B True North and out of the great PGC Shoeshone 4106 cow. A true curve bender - "Laddy" ranks in the top 25% of the breed for CED, BW, WW & YW. His full sisters continue to impress, calving in the first 20 days of the calving season with their entire lives spent performing during back to back droughts for 2 years running. They are absolute stand outs - feminine, with added bone structure and correctness, excellent udders, temperament and mothering ability. We have used him extensively on our commercial and registered heifers and young cows with great success, his calves continue to impress.

PGC Latitude 49



Eligible for
Heart of the Hi-Line
Breeding Projects



PGC Forge

Bull Born: 02/15/18 Reg Number: 19230832 Tattoo: 8075

S A V FINAL ANSWER 0035#
CONNEALY CAPITALIST 028#
PRIDES PITA OF CONANGA 8821

SITZ TRAVELER 8180#
S A V EMULOUS 8145
C R A BEXTOR 872 5205 608#
PRIDES TRAV OF CONANGA 6499

SITZ UPSIDE 547W#
PGC SHOESHONE GIRL 4106#
PGC SHOESHONE GIRL 0229#

SITZ UPWARD 307R#
SITZ EMMA 27T
PGC MAGNITUDE 8060
D C M SHOESHONE 518 572#

CED	BW	WW	YW	HP	MILK	\$EN
+2	+4.2	+76	+126	+13.6	+19	-25
Marb EPD	REA EPD	Fat EPD	\$M	\$W	\$B	\$C
+0.36	+0.43	-0.005	+64	+56	+134	+238

PGC Forge was a top seller in our 2019 sale, purchased by Skinner Angus and Bobcat Angus. We have used Forge heavily over the last couple of years to add structure and thickness, performance, good temperament and fertility - all traits we have come to expect from his dam 4106. He was the heaviest weaning sire group in our 2023 bull calf crop, his calves performing despite extensive drought. They are standouts in the bull pen and have great fertility as yearling bulls.

PGC Forge



Eligible for
Heart of the Hi-Line
Breeding Projects



Circle L Boone

Bull Born: 11/24/19 Reg Number: + 19878187 Tattoo: 8G8

CONNEALY CONFIDENCE 0100#
CONNEALY CONFIDENCE PLUS#
ELBANNA OF CONANGA 1209

CONNEALY TOBIN
BECKA GALA OF CONANGA 8281
CONNEALY CONSENSUS#
ELBASTA OF CONANGA 9703

EXAR DENVER 2002B#
RB LADY DENVER 167-428
R B LADY PARTY 167-305

EXAR UPSHOT 0562B#
EXAR ROYAL LASS 1067
WERNER WAR PARTY 2417#
B A LADY 6807 305

CED	BW	WW	YW	HP	MILK	\$EN
-2	+4.6	+78	+131	+12.3	+21	-18
Marb EPD	REA EPD	Fat EPD	\$M	\$W	\$B	\$C
+0.82	+0.98	+0.028	+73	+60	+167	+290

Circle L Boone was a bull purchased from Circle L Angus in 2020 with Dana & Lisa Darlington. He has been used in A.I. programs at Circle L and PGC and has performed well as a natural service sire at PGC and Darlington's. His calves are stamped with added bone and structure at calving, and he has made some beautiful females in the replacement pen. He is good natured with excellent foot structure and fertility & is backed by an outstanding maternal pedigree. We look to Boone to add performance and carcass quality, while retaining excellent phenotypic traits and promoting maternal characteristics.

Circle L Boone



Eligible for
Heart of the Hi-Line
Breeding Projects

March 27
2024

1:00 pm



PetersonGrainandCattle.com



Presorted
FIRST CLASS
US Postage
Paid
Ballyhoo Printing
59457

FIRST CLASS