

Ryan & Karnell Perry  
406/788-9869 406/390-5473



On behalf of my wife and myself, along with all the consignors and their respective families I would like to welcome you to the Annual Treasure Bull Test Sale. We thank you for your continued support and interest in the program and sale.

What a set of bulls the consignors have brought this year to the Treasure Bull Test. They have and will present themselves to make our motto run true. This is **The Cowboy's and Cowgirl's Performance Bull Test.**

Please feel free and I strongly suggest calling the consignors on their consignments. They are all excited about their bulls and I know they would love to visit and provide any more information you might need. This is a deep offering of calving ease, performance tested Black Angus Bulls that the consignors are extremely proud of!

Finally, I would like to thank Matt, Rose and the entire family and crew at Muddy Creek Feedyard. They did an outstanding job with the bulls this year. We feel they are in perfect condition to go on with for immediate service. Dr

Craig and Jolene Moore with East Slope Vet Clinic for everything they do for us at the feedyards and yards.

The sale will be carried live on Northern Livestock Video Auction. Also feel free to preview them at [www.northernlivestockvideo.com](http://www.northernlivestockvideo.com).

Please join us on Monday, April 15th at 4 PM, for "Happy Hour Bull Preview". Plenty of refreshments, snacks, and fellowship among ranchers and TBT consignors to be had while previewing the bulls.

We will see you at the sale on Tuesday, April 16th. You will hugely appreciate this set of "Cowboy Kind" Angus Bulls!

TBT Crew and Consignors



Muddy Creek Feedyard



East Slope Vet



# PERFORMANCE SALE

Tuesday,

**APRIL 16, 2024**

Lunch 11:30 AM Sale 1:00 PM  
WESTERN LIVESTOCK AUCTION  
GREAT FALLS, MT

## ~ General Information ~

### Pre-Sale Viewing of Bulls

The bulls will be at Western Livestock Auction on Sunday, April 15, 2024 and available for viewing. Prior to that they are available for viewing anytime at Muddy Creek Feedyard, 2 miles west of Vaughn, MT. They are in Pens 70, 71 and 72.

### Sale Day Phones

**Western Livestock Auction**

**406/727-5400**

**Ryan Perry 406/788-9869**

**Karnell Perry 406/390-5473**

### Auctioneer:

**Joe Goggins 406/861-5664**

### Livestock Press

Kurt Kangas 406/366-4190.....Angus Journal/Angus Ass'n  
John Goggins 406/698-4159 ..... Western Ag Reporter  
Devin Murnin 406/696-1502 ..... Western Livestock Journal  
Curt Cox 307/630-4604 ..... Wyoming Livestock Roundup

*Footnotes are provided by consignors. Feel free to contact consignors about their bulls. Consignor contact information is on page 3.*

### Fertility

Every bull selling has had a complete breeding physical and has been semen tested. Scrotal measurements were taken April 6, 2024. Measurements listed are actual size. Bulls sell guaranteed to be breeders via natural service. Guarantees are between the buyer and TBT Consignor only!

**Veterinarian: Dr. Craig Moore, 406/466-3020**

### Health

All bulls have also been tested negative for BVD. Bulls have completed all requirements for immediate interstate shipment. If your state or providence requires more for import than has been completed, it will be done immediately after the sale. TBT will assume all extra vet expenses for interstate shipment.

### Delivery

Free delivery to central locations (stockyards, etc.) within 500 miles of Great Falls, MT on all bulls selling for \$4000 or more, or the purchase of multiple bulls. Delivery beyond 500 miles will be billed at cost. Buyers picking up bulls within five days will be given a \$50 rebate per bull.

### Insurance

Mortality Insurance is available thru Tyler Holland, Novich Insurance Agency. See page 4 for insurance options. Buyer pays for ½ and TBT Consignor pays for ½. Buyers if you choose to insure your bulls please do so when settling for bulls.

### Performance Data

EPD's listed in this catalog are as of March 15, 2024.

### Transportation & Accommodations

Great Falls is served by several airlines. We will meet any planes if notified.

O'Haire Motor Inn 17 7th St. S, Great Falls, MT.....406-454-2141

La Quinta Inn 600 River Dr S, Great Falls, MT.....406-761-2600

*Ask for the Treasure Bull Test Rates.*

### Terms and Conditions

Bulls sell under the terms and conditions of the American Angus Association. Settlement is cash. Settlement must be made at the time of sale unless arrangements have been made prior to sale with individual consignor and TBT. Registration papers will be transferred to buyer when settlement has been made. Announcements made from auction block take precedence over printed material. Auctioneer will settle any disputes of bids. Anyone attending the sale does so at their own risk. TBT and Western Livestock Auction, LLC assume no liability, legal or otherwise, for any accidents which may occur.

# 2024 INDEX OF CONSIGNORS

**MLK Angus**  
**Mark & Lynn Keller**  
2828 Lincoln Rd E  
Helena, MT 59602  
406.431.0872  
mlkangus@outlook.com  
1 ~ 2

**Troyer Ranch LLC**  
**Wayne & Atlee Troyer**  
203 Troyer Lane  
Moore, MT 59464  
406.707.0245  
3 ~ 4 ~ 5 ~ 6

**Willekes Angus**  
**Bob & Brenda Willekes**  
10 Cowboy Way  
Choteau, MT 59422  
406.590.2526  
mtmarblegranite@yahoo.com  
8 ~ 9 ~ 10 ~ 11  
12 ~ 13 ~ 14 ~ 15

**Marshall Willekes Angus**  
**Marshall Willekes**  
10 Cowboy Way  
Choteau, MT 59422  
406.590.7011  
marshallwillekes@yahoo.com  
19 ~ 20 ~ 22 ~ 23 ~ 24

**Dalbey Angus**  
**John Dalbey**  
1982 Mtn View Orchard Rd  
Corvallis, MT 59828  
406.564.7822  
jd4947@yahoo.com  
27 ~ 28 ~ 29 ~ 30

**Beuerman Angus Ranch**  
**Erich Beuerman**  
135 Meriwether Rd  
Cut Bank, MT 59427  
406.551.3759  
ebeuerman@gmail.com  
31 ~ 32 ~ 33 ~ 34

**Granger Ranch**  
**Jim & Elizabeth Granger**  
1929 Eden Rd  
Great Falls, MT 59405  
406.736.5588  
blackcow@3rivers.net  
36 ~ 37 ~ 38 ~ 39 ~ 40 ~ 41 ~ 42

**Granger Livestock**  
**Forrest Granger**  
1524 Eden Rd  
Great Falls, MT 59405  
406.868.5148  
forrestgranger@gmail.com  
43 ~ 44

**Jeff & Kara Schile**  
2869 Harrer Road  
Fort Benton, MT 59446  
406.546.5978  
jshile@msn.com  
46 ~ 47 ~ 48

**Harrer's Lost Lake Ranch**  
**Deanna Harrer**  
137 Eden Rd  
Great Falls, MT 59405  
406.546.5978  
49 ~ 50 ~ 51

**Windy Ridge Angus**  
**Karen Davis**  
Box 336  
Geraldine, MT 59446  
406.737.4320  
windyridge@itstriangle.com  
52 ~ 53 ~ 54 ~ 55 ~ 56

**McFadgen Angus**  
**Mark & Kathy McFadgen**  
3024 Bugli Lane  
Stevensville, MT 59870  
406.531.2301  
mcfadgenmark@hotmail.com  
57 ~ 60

**Wild Kat Angus**  
**Kevin Warner**  
1233 Western Skies Trail  
Stevensville, MT 59870  
406.552.7258  
kwarner1148@gmail.com  
61 ~ 62

**Lewis Land & Livestock**  
**Kaleb & Kari Lewis**  
714 E Main  
Cut Bank, MT 59427  
406.209.2953  
kariandkaleblewis@gmail.com  
63 ~ 64 ~ 65 ~ 66  
67 ~ 68 ~ 69 ~ 70

**Harwood Cattle Co**  
**Jeff & Suzanne Harwood**  
7068 S Peak Rd  
Geysers, MT 59447  
406.366.5424  
jharwoodcattle@gmail.com  
71 ~ 72

**Krantz Angus**  
**Clark & Carter Krantz**  
835 Fairmont Rd  
Kalispell, MT 59901  
406.250.1081  
3kidfarm@centurytel.net  
73 ~ 74

**MSU Angus**  
**Thomas Hamilton**  
**Tim DeCurto**  
Box 172900  
Bozeman, MT 59717  
541.403.4163 Thomas  
msu-angus@gmail.com  
75 ~ 76 ~ 77 ~ 78  
79 ~ 80 ~ 81 ~ 82

**Gem State Angus**  
**Kevin & Don Thibault**  
2185 Settlers Lane  
Twin Falls, MT ID 83301  
435.881.3974 Kevin  
208.420.5061 Don  
kthibault@yahoo.com  
86 ~ 87 ~ 88

**Hamilton Angus Ranch**  
**Thomas Hamilton**  
211 N Pine  
Townsend, MT 59644  
541.403.4163  
hamiltonangusranch@gmail.com  
91 ~ 92 ~ 93 ~ 94

**Olson Cattle Co**  
**Wendy Olson**  
63702 Chalwain Rd  
St Ignatius, MT 59865  
406.261.3782  
occ@blackfoot.net  
95 ~ 96 ~ 97 ~ 98 ~ 99 ~ 100

**Legacy Ridge Angus**  
**Cody Arnold**  
Box 322  
Chinook, MT 59523  
406.390.5417  
codyarnold50@gmail.com  
101

**Linhart Angus**  
**Mike Vanek**  
Lewistown, MT 59457  
406.366.4668  
406.366.4667  
mmcattleservices@yahoo.com  
102

**RK Perry**  
**Ryan & Karnell Perry**  
Box 1  
Power, MT 59468  
406.788.9869  
rkperry@icloud.com  
104 ~ 105 ~ 106 ~ 107 ~ 108 ~  
109 ~ 110 ~ 111 ~ 112 ~ 113 ~  
114 ~ 115 ~ 116 ~ 117 ~ 118 ~  
119 ~ 120 ~ 121 ~ 122 ~ 123 ~  
126 ~ 128

**Jacobsen Ranch**  
**Wade Jacobsen**  
1282 US Hwy 89  
Sun River, MT 59483  
406.799.5889  
134

**Flesch Angus**  
**Jeff Flesch**  
Box 574  
Shelby, MT 59474  
970.290.4353  
jeffflesch@aol.com  
136 ~ 137

*Feel free to contact  
consignors about  
their bulls.*



### Bid through Northern Livestock Video Auction's NEW Online Bidding Platform! Desktop and Mobile Friendly

#### For the Desktop:

1. It is best to use the Google Chrome web browser.
2. **Pre-Register at least one day prior to the sale.**
3. Go to [bid.northernlivestockvideo.com](http://bid.northernlivestockvideo.com) and click "Get Approved to Bid".
4. Doing this will prompt you to create an account, after which you will fill out a bidder approval application.
5. Once Approved, an email will be sent to the email account provided, please click the link in that email to activate your account and a buyer number will be provided.
6. On sale day (after approval), visit [www.northernlivestockvideo.com](http://www.northernlivestockvideo.com) to view and bid!

#### For the Mobile:

Use your mobile device to download the Northern App and follow the above steps to get approved.

**There is an instructional video on how to register to bid on our website,  
[www.northernlivestockvideo.com](http://www.northernlivestockvideo.com) if you have any questions.**

**For technical assistance with Internet Viewing and Bidding Questions,  
call Sam Fraser 406-860-0590.**

#### Phone Bidding:

Anyone wanting to use the Northern Livestock phone bank to bid must pre-register and have a bid number to bid on the phone.

**To register with NLVA call 866-616-5035 Before Sale Day.**

View the Online CATALOG and VIDEO CLIP of each BULL selling at [www.northernlivestockvideo.com](http://www.northernlivestockvideo.com)

Bidders who are successful in making purchases will be contacted following the sale to make payment and delivery arrangements.

Northern Livestock's Sale Day Bid Line: **1-406-245-0889.**

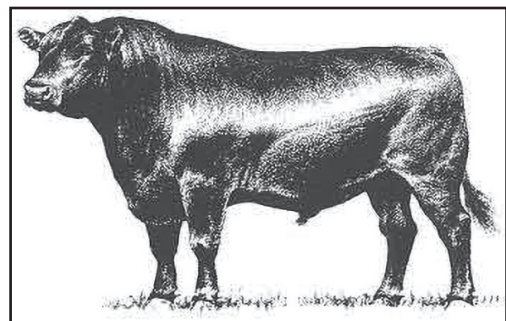
## BULL MORTALITY INSURANCE

### Novich Insurance Agency, agent for XL Catlin Insurance Co

**Tyler Holland**  
**(406) 684-5264**  
**[tylerholland@3rivers.net](mailto:tylerholland@3rivers.net)**

**One Year Policy Term, from the date of the sale**  
**Full Mortality Only Option = 7.7%**  
**\$200 minimum premium**

**Full Mortality**  
**100% of the value of the bull in the event of death or**  
**humane destruction as a result of a life-threatening**  
**injury. No deductibles, no co-insurance.**



# ABOVE AVERAGE GOALS REQUIRE TARGETED BULLS

## *Aim High*

The Targeting the Brand™ logo highlights registered Angus bulls with greater genetic potential to produce calves that meet the most challenging specifications of the *Certified Angus Beef*® brand.

**Only 1 in 4 non-parent Angus bulls qualify.**

### *Minimum Genetic Requirements*

Marbling EPD (Marb)	+0.65
Dollar Grid Carcass Index (\$G)	+55.0



For more information on Targeting the Brand™ visit [CABcattle.com](http://CABcattle.com).



## Driving the science of better breeding

There's little room for error in the cattle business. Producers need the most advanced information to make smart selection decisions, and Angus Genetics Inc. (AGI) provides it through genomic-enhanced expected progeny differences (GE-EPDs).

EPDs that traditionally contained all pedigree, performance and progeny information now also include results from available genomic, or DNA, tests. Breeders who use genomic technology give buyers access to AGI-generated GE-EPDs that provide:

- Increased predictability and decreased risk for young and unproven animals due to enhanced accuracy of EPDs
- Better characterization of genetics for difficult-to-measure performance traits (such as carcass traits, maternal traits and feed efficiency)
- The ability to make more rapid progress for traits that are important to you, due to:
  - more accurate selection
  - easier identification of genetic outliers
  - the ability to propagate young animals with confidence earlier in their lives

In fact, GE-EPDs on unproven animals have the same amount of accuracy as if they had recorded 8-33 calves, depending on the trait. That's valuable insight, offered regularly through the breed's weekly national cattle evaluation at [www.angus.org](http://www.angus.org).

### How do you know if EPDs are genomic-enhanced?

Ask your breeder, refer to the registration paper, or look for the AGI GE-EPD logo, Angus GS™ powered by partner Neogen GeneSeek or the HD50k or i50k by partner Zoetis.



# BLACK ANGUS BULLS

## 1 MLK Rainmaker 351

MLK Angus

Black Angus

AAA#: 20744091

DOB: 02/27/23

Tattoo: 351

Sitz Rainmaker 8075

Sitz Rainmaker 11127

Sitz Emma E 417L

Sitz Investment 660Z

MLK Everelda Entense 5171

Sitz Everelda Entense 1721

BW	205 Day Wt.	205 Day Ratio	365 Day Wt.	365 Day Ratio	TBT Ratio
90	819	104	1231	104	104

CED	BW	WW	YW	SC	MILK	\$M	\$W	\$F	\$B	\$C
+1	+4.1	+73	+132	+1.92	+33	+76	+65	+98	+126	+239

This guy has been a standout from the very beginning! This high indexing bull's dam has a WR of 105 on 7 calves and a YR of 110 on 3 calves. His granddam is Sitz Everelda Entense 023. Back in 1999, 023 was a top selling cow for \$300,000 and has progeny sales of over 1 million dollars. Rainmaker 11127 produces herd-building females with good pelvic structures and calm dispositions.



Sitz Rainmaker 11127 - Sire of Lot 1

## 2 MLK Emerald 372

MLK Angus

Black Angus

AAA#: 20745058

DOB: 02/17/23

Tattoo: 372

Connealy Confidence Plus

Connealy Emerald

Jace of Conanga 6571

Jindra Acclaim

MLK Blackbird 072

Sitz Blackbird 6720

BW	205 Day Wt.	205 Day Ratio	365 Day Wt.	365 Day Ratio	TBT Ratio
69	794	101	1169	98	96

CED	BW	WW	YW	SC	MILK	\$M	\$W	\$F	\$B	\$C
+10	-2.8	+61	+109	-.52	+23	+79	+65	+103	+161	+288

This bull will be an excellent heifer bull loaded with performance and boasting great wean and yearling weights. His dollar values include Top 15% in \$M, Top 15% in \$F, Top 25% in \$B and Top in \$C. His sire, Connealy Emerald has proven production traits with BW accuracy over .95 and carcass progeny on his record.



Connealy Emerald - Sire of Lot 2

## 3 TR3 Tahoe 302

Troyer Ranch LLC

Black Angus

AAA#: 20739107

DOB: 01/04/23

Tattoo: 302

Tehama Upward Y238

Tehama Tahoe B767

Tehama Mary Blackbird Y684

A A R Rito 1163

TR3 Airy Primrose 601

A A R Airy Primrose 6057

BW	205 Day Wt.	205 Day Ratio	365 Day Wt.	365 Day Ratio	TBT Ratio
76	668	103	1135	95	102

CED	BW	WW	YW	SC	MILK	\$M	\$W	\$F	\$B	\$C
+14	-2.1	+52	+86	+.91	+25	+75	+59	+64	+106	+212

Sure-shot heifer bull, dam is a very consistent producer that never misses. Selling 2/3 Interest and Full Possession



Tehama Tahoe B767 - Sire of Lots 3, 4 & 5

# FROM BREED LEADING SIRES

**4 TR3 Tahoe 303** [AMF-CAF-D2F-DDF-M1F-NHF-OHF-OSF-RDF] **Troyer Ranch LLC**

Black Angus  
 AAA#: 20739101  
 DOB: 01/08/23  
 Tattoo: 303

Tehama Upward Y238  
 Tehama Tahoe B767  
 Tehama Mary Blackbird Y684

A A R Frontman 3132  
 A A R Patti Kelton  
 A A R Patti Kelton 6069

Entry Wt	Final Wt
917	1360
ADG	ADG Ratio
3.85	104
WDA	WDA Ratio
3.21	102

BW	205 Day Wt.	205 Day Ratio	365 Day Wt.	365 Day Ratio	TBT Ratio
70	748	115	1203	101	107

CED	BW	WW	YW	SC	MILK	\$M	\$W	\$F	\$B	\$C
+12	-1.2	+72	+123	+69	+36	+73	+82	+88	+135	+248

Lots of gain on this Tahoe son. Dam is a very nice moderate framed cow that we purchased from Arntzens as a heifer. She always brings in a nice calf in the fall. Dam production 4 calves @ 108 NR with a calving interval of 349. Herd bull prospect. **Selling 2/3 Interest and Full Possession.**

**6 TR3 Ironhorse 307** [AMF-CAF-D2F-DDF-M1F-NHF-OHF-OSF-RDF] **Troyer Ranch LLC**

Black Angus  
 AAA#: 20738872  
 DOB: 01/16/23  
 Tattoo: 307

EXAR Stallion 7986  
 Bigk/WSC Iron Horse 025F  
 EXAR Henrietta Pride 5702

A A R Outside 5139  
 TR3 Blackcap 702  
 Diamond Blackcap U367

Entry Wt	Final Wt
835	1266
ADG	ADG Ratio
3.75	101
WDA	WDA Ratio
3.04	96

BW	205 Day Wt.	205 Day Ratio	365 Day Wt.	365 Day Ratio	TBT Ratio
90	702	108	1135	95	101

CED	BW	WW	YW	SC	MILK	\$M	\$W	\$F	\$B	\$C
+10	+7	+69	+120	+1.12	+31	+55	+72	+83	+142	+239

Dam is a super nice cow with very nice udder. She qualified for pathfinder with 5 calves at 106 NR and calving interval 363. **Selling 2/3 Interest and Full Possession.**

**5 TR3 Tahoe 305** [AMF-CAF-D2F-DDF-M1F-NHF-OHF-OSF-RDF] **Troyer Ranch LLC**

Black Angus  
 AAA#: 20739087  
 DOB: 01/10/23  
 Tattoo: 305

Tehama Upward Y238  
 Tehama Tahoe B767  
 Tehama Mary Blackbird Y684

MW DNAmite  
 TR3 Ferns Pride 037  
 A A R Ferns Pride 5009

Entry Wt	Final Wt
899	1407
ADG	ADG Ratio
4.42	119
WDA	WDA Ratio
3.39	106

BW	205 Day Wt.	205 Day Ratio	365 Day Wt.	365 Day Ratio	TBT Ratio
90	779	120	1282	108	114

CED	BW	WW	YW	SC	MILK	\$M	\$W	\$F	\$B	\$C
+12	-1.6	+64	+111	+80	+30	+75	+72	+84	+145	+263

Another Tahoe son that has been a standout since birth. Take a look. **Selling 2/3 Interest and Full Possession.**

**8 Will Deep River L28** **Willekes Angus**

Black Angus  
 AAA#: +20783813  
 DOB: 01/24/23  
 Tattoo: L28

Ellingson Three Rivers 8062  
 Ellingson Deep River  
 EA Primrose 5083

S A V Untouchable 8665  
 S R S Rose 1244Y  
 S R S Rose 7185T

Entry Wt	Final Wt
889	1347
ADG	ADG Ratio
3.98	107
WDA	WDA Ratio
3.30	105

BW	205 Day Wt.	205 Day Ratio	365 Day Wt.	365 Day Ratio	TBT Ratio
83	681	106	1226	103	105

CED	BW	WW	YW	SC	MILK	\$M	\$W	\$F	\$B	\$C
+8	+2	+79	+144	+89	+27	+51	+67	+121	+162	+261

Lot 8 is out of a very maternal donor cow owned with Skinner Ranch. Very impressive 50K data, top 15% of the breed or better for WW, YW, MW, Angle, PAP, CW, and \$F. Safe for larger frame heifers.



Bigk/WSC Iron Horse 025F - Sire of Lot 6



Ellingson Deep River - Sire of Lots 8, 11 & 22

# BLACK ANGUS BULLS

## 9 Will Conclusion L59 [M1F]

Willekes Angus

Black Angus  
 AAA#: 20783817  
 DOB: 02/10/23  
 Tattoo: L59

FF Conclusion F83  
 FF Conclusion H64  
 FF Henrietta Pride C3  
 S A V Renown 3439  
 Willekes Entense E31  
 Pine Coulee Entense T515

Entry Wt	Final Wt
805	1261
ADG	ADG Ratio
3.97	107
WDA	WDA Ratio
3.23	102

BW	205 Day Wt.	205 Day Ratio	365 Day Wt.	365 Day Ratio	TBT Ratio
84	666	100	1181	99	102

CED	BW	WW	YW	SC	MILK	\$M	\$W	\$F	\$B	\$C
+5	+2.1	+64	+121	+1.21	+32	+67	+63	+74	+119	+221

Dam is a big-bodied Renown daughter out of a herd sire we purchased from Jeff Flesch.

## 10 Will Profound L86

Willekes Angus

Black Angus  
 AAA#: +20783816  
 DOB: 02/19/23  
 Tattoo: L86

S Powerpoint WS 5503  
 Ellingson Profound 8155  
 EA Rosetta 6157  
 Connealy Capitalist 028  
 Willekes Bonny E01  
 Willekes Bonny C221

Entry Wt	Final Wt
720	1166
ADG	ADG Ratio
3.88	105
WDA	WDA Ratio
3.05	97

BW	205 Day Wt.	205 Day Ratio	365 Day Wt.	365 Day Ratio	TBT Ratio
86	576	113	1102	93	104

CED	BW	WW	YW	SC	MILK	\$M	\$W	\$F	\$B	\$C
+6	+3.2	+85	+144	+1.57	+15	+83	+66	+91	+138	+262

Dam of Lot 10 is a really nice Pathfinder cow, with outstanding production records. 5 WR @ 113, 1 YR @ 123.



Ellingson Profound 8155 - Sire of Lots 10, 13 & 137

## 11 Will Deep River L46

Willekes Angus

Black Angus  
 AAA#: +20833757  
 DOB: 01/30/23  
 Tattoo: L46

Ellingson Three Rivers 8062  
 Ellingson Deep River  
 EA Primrose 5083  
 S A V Net Worth 4200  
 Pine Coulee Pride of Lee W25  
 B5 Pride of Lee 5125

Entry Wt	Final Wt
775	1237
ADG	ADG Ratio
4.02	108
WDA	WDA Ratio
3.08	98

BW	205 Day Wt.	205 Day Ratio	365 Day Wt.	365 Day Ratio	TBT Ratio
87	675	103	1140	96	102

CED	BW	WW	YW	SC	MILK	\$M	\$W	\$F	\$B	\$C
+5	+3.5	+70	+135	+1.36	+40	+44	+63	+105	+143	+229

Outstanding donor dam, W25 has been a Herd sire producer. 1 Spur son sold through TBT to Karl Rappold, another Spur son through TBT with a Champion ADG sold to Jeff Berger and Danny Mydland for \$17,500. Several other sons sold through MBT. Top 2% of the breed for PAP score.

## 12 Will Big Valley L32

Willekes Angus

Black Angus  
 AAA#: 20783806  
 DOB: 01/24/23  
 Tattoo: L32

Connealy Dry Valley  
 Connealy Big Valley  
 Bunty Lay of Conanga 4930  
 Musgrave Big Sky  
 Willekes Lady E12  
 Pine Coulee Lady B127

Entry Wt	Final Wt
907	1387
ADG	ADG Ratio
4.17	113
WDA	WDA Ratio
3.40	108

BW	205 Day Wt.	205 Day Ratio	365 Day Wt.	365 Day Ratio	TBT Ratio
82	725	119	1263	106	111

CED	BW	WW	YW	SC	MILK	\$M	\$W	\$F	\$B	\$C
+7	+6	+62	+113	+1.11	+27	+69	+63	+77	+126	+232

Herd sire prospect! Don't know who I like better, Lot 12 or his Dam, as he has been a standout since birth. Beautiful dam, soon to join our Donor pen. Excellent production records, Calving interval 5 @ 361 days, 5 WR @ 109, and 2 YR @ 105.



Connealy Big Valley - Sire of Lot 12



# FROM BREED LEADING SIRES

## 13 Will Profound L84

Willekes Angus

Black Angus  
 AAA#: +20807047  
 DOB: 02/17/23  
 Tattoo: L84

S Powerpoint WS 5503  
 Ellingson Profound 8155  
 EA Rosetta 6157  
 Connealy Capitalist 028  
 Willekes Bonny E01  
 Willekes Bonny C221

Entry Wt	Final Wt
782	1240
ADG	ADG Ratio
3.98	107
WDA	WDA Ratio
3.23	102

BW	205 Day Wt.	205 Day Ratio	365 Day Wt.	365 Day Ratio	TBT Ratio
89	629	113	1171	98	106

CED	BW	WW	YW	SC	MILK	\$M	\$W	\$F	\$B	\$C
+14	+4	+71	+12	+89	+17	+96	+66	+59	+102	+228

Full brother to lot 10. Heifer bull with growth and top 1% of the breed for Maternal, out of a Pathfinder cow.

## 15 Will Conclusion L99

Willekes Angus

Black Angus  
 AAA#: 20791142  
 DOB: 04/05/23  
 Tattoo: L99

FF Conclusion F83  
 Will Conclusion J30  
 Willekes Bonny E02  
 PA Fortitude 2500  
 Willekes Bonny C221  
 Pine Coulee Bonny Z78

Entry Wt	Final Wt
693	1095
ADG	ADG Ratio
3.50	94
WDA	WDA Ratio
3.25	103

BW	205 Day Wt.	205 Day Ratio	365 Day Wt.	365 Day Ratio	TBT Ratio
84	696	114	1169	98	102

CED	BW	WW	YW	SC	MILK	\$M	\$W	\$F	\$B	\$C
+1	+1.6	+76	+123	+47	+20	+66	+69	+67	+126	+229

April Bull calf, maternal brother to lot 14, top 10% for PAP score.

## 14 Will Thedford L71

Willekes Angus

Black Angus  
 AAA#: +20784033  
 DOB: 02/14/23  
 Tattoo: L71

Bar R Jet Black 5063  
 Hoffman Thedford  
 HA Rito Lady 3839  
 PA Fortitude 2500  
 Willekes Bonny C221  
 Pine Coulee Bonny Z78

Entry Wt	Final Wt
880	1270
ADG	ADG Ratio
3.39	91
WDA	WDA Ratio
3.28	104

BW	205 Day Wt.	205 Day Ratio	365 Day Wt.	365 Day Ratio	TBT Ratio
92	745	108	1207	101	100

CED	BW	WW	YW	SC	MILK	\$M	\$W	\$F	\$B	\$C
+11	+9	+76	+139	+1.15	+31	+67	+75	+113	+161	+276

Heifer bull prospect out of a Pathfinder donor cow, whose daughter is also a Pathfinder cow, and the dam of lots 10 and 13. Keep all the daughters!

## 19 MWA Pacific 09L

Marshall Willekes Angus

Black Angus  
 AAA#: 20781179  
 DOB: 01/17/23  
 Tattoo: 09L

Hoover No Doubt  
 Sterling Pacific 904  
 Baldrige Isabel B082  
 Hoover Bullseye M122  
 Top Notch Miss Blackcap 560  
 KG Blackcap 6394

Entry Wt	Final Wt
756	1260
ADG	ADG Ratio
4.38	118
WDA	WDA Ratio
3.04	96

BW	205 Day Wt.	205 Day Ratio	365 Day Wt.	365 Day Ratio	TBT Ratio
83	651	94	1136	96	103

CED	BW	WW	YW	SC	MILK	\$M	\$W	\$F	\$B	\$C
+1	+3	+73	+130	+1.16	+9	+42	+44	+106	+156	+244

Gentle smooth made bull backed by a fertile cow with 7 calves on a 363-day interval.

## 20 MWA Thedford 17L

Marshall Willekes Angus

Black Angus  
 AAA#: 20781168  
 DOB: 01/20/23  
 Tattoo: 17L

Bar R Jet Black 5063  
 Hoffman Thedford  
 HA Rito Lady 3839  
 Will 112 of Rita R186  
 Willekes Blackbird E34  
 Mission Blackbird C-15

Entry Wt	Final Wt
778	1186
ADG	ADG Ratio
3.55	96
WDA	WDA Ratio
2.88	91

BW	205 Day Wt.	205 Day Ratio	365 Day Wt.	365 Day Ratio	TBT Ratio
74	792	115	1147	96	102

CED	BW	WW	YW	SC	MILK	\$M	\$W	\$F	\$B	\$C
+10	+6	+58	+107	+2.14	+26	+52	+57	+87	+131	+222

Bull with impressive early growth who stems from a very functional deep bodied cow who raises a good one every year.



Hoffman Thedford - Sire of Lots 14, 20, 34, 40, 107

# BLACK ANGUS BULLS

## 22 MWA Deep River 13L

Marshall Willekes Angus

Black Angus  
 Ellingson Three Rivers 8062  
 Ellingson Deep River  
 EA Primrose 5083  
 S A V Untouchable 8665  
 S R S Rose 1244Y  
 S R S Rose 7185T

Entry Wt	Final Wt
790	1294
ADG	ADG Ratio
4.38	118
WDA	WDA Ratio
3.16	100

BW	205 Day Wt.	205 Day Ratio	365 Day Wt.	365 Day Ratio	TBT Ratio
92	706	108	1177	99	108

CED	BW	WW	YW	SC	MILK	\$M	\$W	\$F	\$B	\$C
-1	+4.5	+67	+125	+29	+28	+36	+51	+109	+137	+214

Big boned bull from our ET program. Proven donor cow owned with Skinner Seedstock that has lots of great progeny to her resume. Extra growth with this bull with cow power behind him. Genomics read top 2% WW, YW.

## 23 MWA Common Wealth 07L

Marshall Willekes Angus

Black Angus  
 Basin Payweight 1682  
 Connealy Commonwealth  
 Parisian of Conanga 3582  
 Sitz Resilient 10208  
 MWA Henrietta Pride G54  
 FF Henrietta Pride J07

Entry Wt	Final Wt
709	1125
ADG	ADG Ratio
3.62	98
WDA	WDA Ratio
2.71	86

BW	205 Day Wt.	205 Day Ratio	365 Day Wt.	365 Day Ratio	TBT Ratio
61	680	99	1082	91	96

CED	BW	WW	YW	SC	MILK	\$M	\$W	\$F	\$B	\$C
+13	-1.7	+70	+122	+1.24	+19	+38	+60	+105	+152	+235

First calf heifer who did a fantastic job. Long bodied cow with good udder and perfect feet. Balanced bull who will excel and cover cows in any environment. Sleep all night heifer bull.



Connealy Common Wealth - Sire of Lot 23

## 24 MWA Conclusion 44L

Marshall Willekes Angus

Black Angus  
 FF Conclusion F83  
 Will Conclusion J30  
 Willekes Bonny E02  
 Connealy Black Granite  
 Willekes Lucy C11M  
 Will Lucy 113M

Entry Wt	Final Wt
696	1112
ADG	ADG Ratio
3.62	98
WDA	WDA Ratio
2.93	93

BW	205 Day Wt.	205 Day Ratio	365 Day Wt.	365 Day Ratio	TBT Ratio
86	639	100	1069	90	96

CED	BW	WW	YW	SC	MILK	\$M	\$W	\$F	\$B	\$C
+4	+2.3	+62	+107		+29	+71	+63	+77		

## 27 JD Man in Black 31

Dalbey Angus

Black Angus  
 Bar R Jet Black 5063  
 LAR Man In Black  
 JMB Maxine TG 2131  
 HF Tiger 5T  
 JD Blackbird 42  
 JD 458N Blackbird 811U

Entry Wt	Final Wt
1071	1483
ADG	ADG Ratio
3.58	97
WDA	WDA Ratio
3.47	110

BW	205 Day Wt.	205 Day Ratio	365 Day Wt.	365 Day Ratio	TBT Ratio
90	770	110	1315	111	106

CED	BW	WW	YW	SC	MILK	\$M	\$W	\$F	\$B	\$C
+4	+3.2	+81	+147	+1.90	+23	+55	+62	+125	+184	+294

A big stout bull out of a cow that gives a good calf every year. Dam calving interval of 8@365, BW ratio of 99.



(Pictured is FF Conclusion F83 - Sire of J30)

Will Conclusion J30 - Sire of Lots 15 & 24

# FROM BREED LEADING SIRES

## 28 JD Man in Black 34

Dalbey Angus

Black Angus  
 AAA#: 20760096  
 DOB: 01/07/23  
 Tattoo: 34

Bar R Jet Black 5063  
**LAR Man In Black**  
 JMB Maxine TG 2131  
 ZWT Summit 6507  
**JD 6847 Jestress 97**  
 JD Jestress 319

Entry Wt	Final Wt
946	1385
ADG	ADG Ratio
3.82	103
WDA	WDA Ratio
3.26	103



ANGUS GS  
 Powered by Neogen Genoscan

BW	205 Day Wt.	205 Day Ratio	365 Day Wt.	365 Day Ratio	TBT Ratio
92	744	106	1304	110	106

CED	BW	WW	YW	SC	MILK	\$M	\$W	\$F	\$B	\$C
+4	+3.8	+89	+150	+76	+19	+57	+68	+108	+174	+283

A well-rounded bull that often caught our eye in the pasture last summer. Out of a young cow that keeps proving herself more each year. Dam calving interval of 3@359, WW ratio of 3@100, YW ratio of 1@103.

## 30 JD Man In Black 311

Dalbey Angus

Black Angus  
 AAA#: 20760098  
 DOB: 03/06/23  
 Tattoo: 311

Bar R Jet Black 5063  
**LAR Man In Black**  
 JMB Maxine TG 2131  
 S A V Brilliance 8077  
**JD 8077 Pride 29Z**  
 JD 88U Pride 013X

Entry Wt	Final Wt
897	1276
ADG	ADG Ratio
3.30	89
WDA	WDA Ratio
3.48	110



ANGUS GS  
 Powered by Neogen Genoscan

BW	205 Day Wt.	205 Day Ratio	365 Day Wt.	365 Day Ratio	TBT Ratio
75	800	114	1290	109	104

CED	BW	WW	YW	SC	MILK	\$M	\$W	\$F	\$B	\$C
+11	+3	+76	+129	+1.43	+30	+80	+78	+96	+148	+272

A heifer bull candidate that has been a standout all summer. Out of no-miss cow. Dam calving interval 10@362, BW ratio 10@98, WW ratio 10@106, YW ratio of 6@104.

## 29 JD Man in Black 38

Dalbey Angus

Black Angus  
 AAA#: 20760097  
 DOB: 01/30/23  
 Tattoo: 38

Bar R Jet Black 5063  
**LAR Man In Black**  
 JMB Maxine TG 2131  
 S A V Resource 1441  
**JD 1441 Blackbird 61A**  
 JD 0228 Blackbird 01X

Entry Wt	Final Wt
927	1459
ADG	ADG Ratio
4.63	125
WDA	WDA Ratio
3.63	115



ANGUS GS  
 Powered by Neogen Genoscan

BW	205 Day Wt.	205 Day Ratio	365 Day Wt.	365 Day Ratio	TBT Ratio
85	737	105	1339	113	114

CED	BW	WW	YW	SC	MILK	\$M	\$W	\$F	\$B	\$C
+7	+1.6	+85	+148	+1.04	+25	+61	+75	+102	+147	+252

A well put together bull out of a big bodied, easy keeping Resource daughter. Dam calving interval of 6@359. **Co-Champion ADG ~ Champion WDA.**

## 31 BEU Kendall L71

Beuerman Angus

Black Angus  
 AAA#: 20692788  
 DOB: 02/05/23  
 Tattoo: L71

KG Justified 3023  
**AAR Kendall 7015**  
 A A R Blackbird Kay 5267  
 Connealy Commonwealth  
**BEU Lady 178**  
 BEU Stealth Lady F17A

Entry Wt	Final Wt
717	1129
ADG	ADG Ratio
3.58	97
WDA	WDA Ratio
2.85	90



ANGUS GS  
 Powered by Neogen Genoscan

BW	205 Day Wt.	205 Day Ratio	365 Day Wt.	365 Day Ratio	TBT Ratio
74	702	103	1194	100	100

CED	BW	WW	YW	SC	MILK	\$M	\$W	\$F	\$B	\$C
+14	-2.8	+61	+110	+7.1	+41	+87	+77	+102	+159	+293

Great heifer bull prospect without sacrificing performance. Top end CED and BW EPDs backed up with top 1% genomic ranks. Top 10% HP and \$W, as well as top 5% \$M.



LAR Man In Black - Sire of Lots 27-30



AAR Kendall 7015 - Sire of Lot 31

# BLACK ANGUS BULLS

## 32 BEU Cavalry L61

Beuerman Angus

Black Angus

AAA#: 20692776

DOB: 02/06/23

Tattoo: L61

JVC Cavalry V3326  
Diamond Cavalry G384  
Diamond Enchantress 983a

Sitz Stellar 726D

BEU Esther J36

BEU Esther D38

Entry Wt	Final Wt
907	1265
ADG	ADG Ratio
3.11	84
WDA	WDA Ratio
3.20	102



ANGUS GS  
Powered by Nogen Genomics

BW	205 Day Wt.	205 Day Ratio	365 Day Wt.	365 Day Ratio	TBT Ratio
77	813	119	1334	112	104

CED	BW	WW	YW	SC	MILK	\$M	\$W	\$F	\$B	\$C
+0	+2.8	+88	+149	+4.7	+24	+52	+73	+122	+177	+282

Fantastic growth bull. Out of a first calf heifer and still able to top the weaning contemporary group with a ratio of 119. **Selling 2/3 Interest and Full Possession.**

## 34 BEU Thedford L78

Beuerman Angus

Black Angus

AAA#: 20692778

DOB: 02/14/23

Tattoo: L78

Bar R Jet Black 5063  
Hoffman Thedford  
HA Rito Lady 3839

EAR Blazin Oak 15513

BEU Stealth Lady F17A

Coleman Lady 0173

Entry Wt	Final Wt
783	1205
ADG	ADG Ratio
3.67	99
WDA	WDA Ratio
3.11	99

ANGUS GS  
Powered by Nogen Genomics

BW	205 Day Wt.	205 Day Ratio	365 Day Wt.	365 Day Ratio	TBT Ratio
90	698	102	1225	103	101

CED	BW	WW	YW	SC	MILK	\$M	\$W	\$F	\$B	\$C
+9	+0	+67	+122	+8.3	+28	+85	+70	+94	+138	+264

Nicely balanced EPD profile. Top 10% \$M and Top 2% for both claw and angle EPD.

## 33 BEU Fair-N-Square L30

Beuerman Angus

[OHP-M1F]

Black Angus

AAA#: 20692784

DOB: 02/12/23

Tattoo: L30

Woodhill Blueprint  
Myers Fair-N-Square M39  
Myers Miss Beauty M136

Lost Lake Peace E236

BEU Dixie Erica H45

SCC Dixie Erica C38

Entry Wt	Final Wt
849	1238
ADG	ADG Ratio
3.38	91
WDA	WDA Ratio
3.18	101



ANGUS GS  
Powered by Nogen Genomics

BW	205 Day Wt.	205 Day Ratio	365 Day Wt.	365 Day Ratio	TBT Ratio
95	771	113	1291	109	104

CED	BW	WW	YW	SC	MILK	\$M	\$W	\$F	\$B	\$C
+4	+3.2	+80	+138	+7.7	+32	+61	+76	+94	+160	+269

We are really liking these Fair-N-Square calves. Thick made from day one and never let up. Cow posted WR of 112 and 113 on her first two calves. Excellent WW and YW EPDs are sure to make big thick calves.

## 36 Granger Dollar Bill 315

Granger Angus

Black Angus

AAA#: 20768659

DOB: 02/21/23

Tattoo: 315

Stevenson Easy Money 70688  
Stevenson Easy Money 0079  
Down T Blackbird 4653

Granger Great Falls 630

Granger Pride 051

Granger Pride 653

Entry Wt	Final Wt
889	1320
ADG	ADG Ratio
3.75	101
WDA	WDA Ratio
3.47	110

ANGUS GS  
Powered by Nogen Genomics

BW	205 Day Wt.	205 Day Ratio	365 Day Wt.	365 Day Ratio	TBT Ratio
76	776	105	1305	110	105

CED	BW	WW	YW	SC	MILK	\$M	\$W	\$F	\$B	\$C
+7	+1.9	+84	+152	+1.31	+22	+76	+72	+113	+153	+274

Dam 2/104 WW, 1/102 YW. Grand Dam 5/105 WW, 3/104 YW. Moderate calving with a top 20% Maternal. Top 3% RADG, top 4% YW, top 10% WW.



Diamond Cavalry G384 - Sire of Lot 32



Myers Fair-N-Square M39 - Sire of Lot 33

# FROM BREED LEADING SIRES

## 37 Granger T Bill 304 Granger Angus

Black Angus Stevenson Easy Money 70688  
 AAA#: 20766956 Stevenson Easy Money 0079  
 DOB: 02/24/23 Down T Blackbird 4653  
 Tattoo: 304

Granger Black Eagle 822		Entry Wt	Final Wt		
Granger Pride 037		850	1278		
Granger Pride 478		ADG	ADG Ratio		
		3.72	100		
		WDA	WDA Ratio		
		3.39	107		
BW	205 Day Wt.	205 Day Ratio	365 Day Wt.	365 Day Ratio	TBT Ratio
70	805	109	1305	110	106

CED	BW	WW	YW	SC	MILK	\$M	\$W	\$F	\$B	\$C
+6	+1.4	+76	+135		+23	+59	+61	+93		

Dam 2/105 WW, Grand dam 7/99 WW 2/104 YW. This calf is one of two twins she raised last year.

## 39 Granger Versatile 321 Granger Angus

Black Angus Baldridge Forecaster B160  
 AAA#: 20761628 Baldridge Versatile  
 DOB: 02/21/23 Baldridge Blackbird A030  
 Tattoo: 321

EXAR Powerhouse 2077B  
 Granger Pride 578  
 Granger Pride 976

Granger Pride 578		Entry Wt	Final Wt		
Granger Pride 976		822	1274		
		ADG	ADG Ratio		
		3.93	106		
		WDA	WDA Ratio		
		3.35	106		
BW	205 Day Wt.	205 Day Ratio	365 Day Wt.	365 Day Ratio	TBT Ratio
89	749	101	1228	103	103

CED	BW	WW	YW	SC	MILK	\$M	\$W	\$F	\$B	\$C
+6	+1.9	+68	+113	-.12	+24	+85	+63	+79	+172	+308

Dam 7/103 WW 3/105 YW. Grand Dam 3/98 WW 4/100 YW. Another negative PAP, top 10%. Top 10% Maternal, HP 15% and Docility top 4%. Marbling top 3% and both foot scores in top 10%.

## 38 Granger T Bill 303 Granger Angus

Black Angus Stevenson Easy Money 70688  
 AAA#: 20759005 Stevenson Easy Money 0079  
 DOB: 02/20/23 Down T Blackbird 4653  
 Tattoo: 303

Granger Great Falls 053  
 Granger Pride 924  
 Granger Pride 490

Granger Pride 924		Entry Wt	Final Wt		
Granger Pride 490		848	1252		
		ADG	ADG Ratio		
		3.51	95		
		WDA	WDA Ratio		
		3.29	104		
BW	205 Day Wt.	205 Day Ratio	365 Day Wt.	365 Day Ratio	TBT Ratio
82	756	102	1220	103	100

CED	BW	WW	YW	SC	MILK	\$M	\$W	\$F	\$B	\$C
+13	-1.2	+56	+92	+59	+31	+95	+69	+57	+83	+203

Dam 3/101 WW, 1/106 YW. Heifer bull with a +13 CED and top 10%PAP. Calf ranks in the top 2% Maternal, top 20% HP, and great foot scores, top 2% Angle and 3% Claw.

## 40 Granger Thedford 306 Granger Angus

Black Angus Bar R Jet Black 5063  
 AAA#: 20763585 Hoffman Thedford  
 DOB: 02/20/23 HA Rito Lady 3839  
 Tattoo: 306

HA Cowboy Up 5405  
 Granger Pride 837  
 Granger Pride 472

Granger Pride 837		Entry Wt	Final Wt		
Granger Pride 472		785	1199		
		ADG	ADG Ratio		
		3.60	97		
		WDA	WDA Ratio		
		3.15	100		
BW	205 Day Wt.	205 Day Ratio	365 Day Wt.	365 Day Ratio	TBT Ratio
94	716	97	1155	97	97

CED	BW	WW	YW	SC	MILK	\$M	\$W	\$F	\$B	\$C
+14	+0	+66	+123	+2.19	+44	+88	+77	+88	+139	+268

Dam 4/101 WW, 1/102 YW. Grand Dam 8/103 WW 4/103 YW. Thedford son with +14 Ced, calving ease, heifer bull. Negative PAP, top 10%. Top 1% Milk, top 4% Maternal and great foot scores of top 2% Angle and 5% Claw.



(Pictured is Stevenson Easy Money 70688- Sire of 0079)  
 Stevenson Easy Money 0079 - Sire of Lots 36-38, 43 & 44



Baldridge Versatile - Sire of Lot 39

# BLACK ANGUS BULLS

## 41 Granger Stellar 342

Granger Angus

Black Angus Mohnen Substantial 272  
 AAA#: +20761938 Sitz Stellar 726D  
 DOB: 02/17/23 SITZ Pride 200B  
 Tattoo: 342  
 Granger Great Falls 053  
 Curtin Erroline 3039  
 Blue Ston Erroline 8040

Entry Wt	Final Wt
788	1261
ADG	ADG Ratio
4.11	111
WDA	WDA Ratio
3.28	104

BW	205 Day Wt.	205 Day Ratio	365 Day Wt.	365 Day Ratio	TBT Ratio
102	634	114	1206	101	109

CED	BW	WW	YW	SC	MILK	\$M	\$W	\$F	\$B	\$C
+0	+3.6	+78	+144	+88	+29	+50	+62	+99	+148	+242

ET son from our great donor who has averaged over \$10,000 on 8 sons at auction. He is negative PAP that is top 10%, Claw 15%, Angle top 20%. Cow use bull only.

## 42 Granger Stellar 337

Granger Angus

Black Angus Mohnen Substantial 272  
 AAA#: +20761935 Sitz Stellar 726D  
 DOB: 02/13/23 SITZ Pride 200B  
 Tattoo: 337  
 Granger Great Falls 053  
 Curtin Erroline 3039  
 Blue Ston Erroline 8040

Entry Wt	Final Wt
772	1135
ADG	ADG Ratio
3.16	85
WDA	WDA Ratio
2.93	93

BW	205 Day Wt.	205 Day Ratio	365 Day Wt.	365 Day Ratio	TBT Ratio
86	626	114	1080	91	97

CED	BW	WW	YW	SC	MILK	\$M	\$W	\$F	\$B	\$C
+4	+2.3	+80	+145	+2.23	+36	+65	+78	+102	+157	+269

ET son with top 2% PAP, top 10% WW and YW. Top 2% scrotal.

## 43 Granger Easy Money 164 FG

Granger Livestock

Black Angus Stevenson Easy Money 70688  
 AAA#: 20828683 Stevenson Easy Money 0079  
 DOB: 02/13/23 Down T Blackbird 4653  
 Tattoo: 341  
 Granger Stockman LC 815  
 Granger pride 164  
 Granger Pride 836

Entry Wt	Final Wt
861	1262
ADG	ADG Ratio
3.49	94
WDA	WDA Ratio
3.25	103

BW	205 Day Wt.	205 Day Ratio	365 Day Wt.	365 Day Ratio	TBT Ratio
93	819	106	1374	116	105

CED	BW	WW	YW	SC	MILK	\$M	\$W	\$F	\$B	\$C
+9	+5	+73	+134		+21	+61	+57	+96		

Out of a first calf heifer, he hit the ground and was nursing in 20 minutes. A 106 205-day ratio, 116 365-day ratio and physical standout since birth.

## 44 Granger Easy Money 806 FG

Granger Livestock

Black Angus Stevenson Easy Money 70688  
 AAA#: 20828684 Stevenson Easy Money 0079  
 DOB: 02/16/23 Down T Blackbird 4653  
 Tattoo: 339  
 Granger Great Falls 630  
 Granger Eileen 806  
 Granger Eileen 575

Entry Wt	Final Wt
900	1347
ADG	ADG Ratio
3.89	105
WDA	WDA Ratio
3.50	111

BW	205 Day Wt.	205 Day Ratio	365 Day Wt.	365 Day Ratio	TBT Ratio
103	768	99	1409	118	107

CED	BW	WW	YW	SC	MILK	\$M	\$W	\$F	\$B	\$C
+6	+1.2	+71	+127		+21	+66	+56	+91		

365-day ratio of 119 at 1409 lbs., a WDA ratio of 111, and ADG ratio of 105, he has 2 older brothers that have sold as first round pick in private treaty sales.

## 46 Hollywood L146 JKS

[DDF]

Jeff & Kara Schile

Black Angus S S Enforcer E812  
 AAA#: 20783141 Williams Hollywood 700-380  
 DOB: 02/07/23 Powell Erica 7312  
 Tattoo: L146  
 S S Black Granite D4  
 Black Pearl Lass F321 LLR  
 Union Lass B10 LLR

Entry Wt	Final Wt
813	1308
ADG	ADG Ratio
4.30	116
WDA	WDA Ratio
3.32	105

BW	205 Day Wt.	205 Day Ratio	365 Day Wt.	365 Day Ratio	TBT Ratio
85	742	105	1244	105	109

CED	BW	WW	YW	SC	MILK	\$M	\$W	\$F	\$B	\$C
+2	+1.8	+89	+159	+1.59	+31	+81	+85	+113	+166	+296

Lot 46 is smooth, straight, and small headed, built for calving ease. Combined with a high weaning, yearling, and feed efficiency ratings in the top 4%. The dam's production is 4 BR 100, 4 WR 104, and 3 YR 106.



Williams Hollywood 700-380 - Sire of Lots 46, 47 & 49

# FROM BREED LEADING SIRES

## 47 Hollywood L68 JKS

Jeff & Kara Schile

Black Angus  
AAA#: 20783140  
DOB: 01/31/23  
Tattoo: L68

S S Enforcer E812  
Williams Hollywood 700-380  
Powell Erica 7312  
Kphu 4007  
All That Ritz E121 B & D  
Wise Pride Z299 B & D

Entry Wt	Final Wt
808	1263
ADG	ADG Ratio
3.96	107
WDA	WDA Ratio
3.15	100



ANGUS GS  
Powered by Neogen Genoscans

BW	205 Day Wt.	205 Day Ratio	365 Day Wt.	365 Day Ratio	TBT Ratio
81	756	107	1182	99	104

CED	BW	WW	YW	SC	MILK	\$M	\$W	\$F	\$B	\$C
+5	+2.3	+83	+154	+1.17	+27	+71	+70	+106	+176	+299

Lot 47 is a thick bull that catches your eye out in the pen. The dam's production is 5 BR 89, 4 WR 99, and 2 YR 105.

## 49 LLR Hollywood L132 ALB

Lost Lake Ranch

Black Angus  
AAA#: 20783139  
DOB: 02/06/23  
Tattoo: L132

S S Enforcer E812  
Williams Hollywood 700-380  
Powell Erica 7312  
HARB Resource 217  
Resource's Elenor G280 LLR  
Nebraska Elenor A331 LLR



ANGUS GS  
Powered by Neogen Genoscans

BW	205 Day Wt.	205 Day Ratio	365 Day Wt.	365 Day Ratio	TBT Ratio
83	733	103	1205	101	102

CED	BW	WW	YW	SC	MILK	\$M	\$W	\$F	\$B	\$C
+10	+1.2	+73	+135	+3.6	+26	+84	+69	+99	+149	+277

## 48 Deposit 324 JKS

Jeff & Kara Schile

Black Angus  
AAA#: 20782837  
DOB: 02/01/23  
Tattoo: 324

Basin Deposit 6249  
Basin Deposit 1060  
Basin Joy 6562  
Windy Ridge Swagger 714  
JKS Kiddy Kipper 949  
KDS Giddy Kipper 306

Entry Wt	Final Wt
903	1289
ADG	ADG Ratio
3.36	90
WDA	WDA Ratio
3.22	102



ANGUS GS  
Powered by Neogen Genoscans

BW	205 Day Wt.	205 Day Ratio	365 Day Wt.	365 Day Ratio	TBT Ratio
90	769	107	1227	103	100

CED	BW	WW	YW	SC	MILK	\$M	\$W	\$F	\$B	\$C
+4	+1.1	+83	+133	+1.29	+28	+65	+80	+71	+108	+205

Lot 48 is a heifer bull that does not sacrifice weaning weights. He will work well at high altitudes. His dam's production is 3 BR 95 and 3 WR 104.

## 50 LLR Exclusive L111 TLH

Lost Lake Ranch

Black Angus  
AAA#: 20783138  
DOB: 02/04/23  
Tattoo: L111

LD Capitalist 316  
Musgrave 316 Exclusive  
Musgrave Prim Lassie 163-386  
8N Generation 667  
Nanas Generation F45 LLR  
Pot Shot Nana D127 LLR



ANGUS GS  
Powered by Neogen Genoscans

BW	205 Day Wt.	205 Day Ratio	365 Day Wt.	365 Day Ratio	TBT Ratio
91	746	105	1145	96	102

CED	BW	WW	YW	SC	MILK	\$M	\$W	\$F	\$B	\$C
+11	+1.1	+71	+126	+7.5	+25	+66	+70	+90	+128	+232



Basin Deposit 1060 - Sire of Lot 48



Musgrave 316 Exclusive - Sire of Lot 50

# BLACK ANGUS BULLS

## 51 LLR Breakthrough L92 RRH [M1F-OHF] Lost Lake Ranch

Black Angus

AAA#: 20785361

DOB: 02/03/23

Tattoo: L92

G A R Prophet K263

Beal Breakthrough

H P C A Sure Fire S6

G A R Anticipation

Unrelenting Daybreak G17 LLR

Consensus Mina E281 LLR

Entry Wt	Final Wt				
811	1213				
ADG	ADG Ratio				
3.50	94				
WDA	WDA Ratio				
3.05	97				
BW	205 Day Wt.	205 Day Ratio	365 Day Wt.	365 Day Ratio	TBT Ratio
81	741	105	1157	97	99



ANGUS GS  
Powered by Nogen GeneCust

CED	BW	WW	YW	SC	MILK	\$M	\$W	\$F	\$B	\$C
+13	-1.3	+74	+129	+33	+38	+99	+88	+99	+184	+338



Beal Breakthrough - Sire of Lot 51

## 52 Windy Ridge Fireball 306 Windy Ridge Angus

Black Angus

AAA#: 20770066

DOB: 01/17/23

Tattoo: 306

GB Fireball 672

B C C California Gold 0534

BCC Lady CBOW 6558-8501

Hilltop RTF Allied 4187

Windy Ridge Diva 142

Windy Ridge Sunflower 631

Entry Wt	Final Wt				
781	1273				
ADG	ADG Ratio				
4.28	115				
WDA	WDA Ratio				
3.07	97				
BW	205 Day Wt.	205 Day Ratio	365 Day Wt.	365 Day Ratio	TBT Ratio
73	729	102	1252	105	107



ANGUS GS  
Powered by Nogen GeneCust

CED	BW	WW	YW	SC	MILK	\$M	\$W	\$F	\$B	\$C
+10	+4	+87	+154	+1.58	+20	+49	+70	+114	+217	+330

Lot 52 is a heifer bull that will go on to be your next herd sire. His dam is a first calf heifer that weaned her calf at 729 lbs. and went on to calve early this year. He gained 4.28 lbs. a day, has top notch marbling, growth, and fertility. Thick from end to end.



B C C California Gold 0534 - Sire of Lots 52 & 54

## 53 Windy Ridge Pacific 322 Windy Ridge Angus

Black Angus

AAA#: 20766673

DOB: 02/01/23

Tattoo: 322

Hoover No Doubt

Sterling Pacific 904

Baldrige Isabel B082

Fast Excitement 949-410

Windy Ridge Cleo 710

Windy Ridge Cleo 514

Entry Wt	Final Wt				
755	1149				
ADG	ADG Ratio				
3.43	92				
WDA	WDA Ratio				
2.87	91				
BW	205 Day Wt.	205 Day Ratio	365 Day Wt.	365 Day Ratio	TBT Ratio
90	772	107	1067	90	96



ANGUS GS  
Powered by Nogen GeneCust

CED	BW	WW	YW	SC	MILK	\$M	\$W	\$F	\$B	\$C
+4	+2.9	+80	+133	+54	+24	+61	+68	+99	+174	+287

This Pacific bull is out of a top producing cow. She had 5 calves at 99 birth, 5 at 105 weaning, and 2 at 103 yearling. She has great feet, milk, and docility. Lot 53 had a slow start on test due to an abscess but is gaining now that he is healed.



Sterling Pacific 904 - Sire of Lots 19, 53 & 102



# FROM BREED LEADING SIRES

## 54 Windy Ridge Fireball 325 Windy Ridge Angus

Black Angus		GB Fireball 672		Entry Wt	Final Wt					
AAA#:	20770082	B C C California Gold 0534		873	1366					
DOB:	02/02/23	BCC Lady CBOW 6558-8501		ADG	ADG Ratio					
Tattoo:	325	Deppe 125 Consensus 313		4.29	116					
		Windy Ridge Sunflower 517		WDA	WDA Ratio					
		Windy Ridge Sunflower 304		3.42	109					
		BW	205 Day Wt.	205 Day Ratio	365 Day Wt.	365 Day Ratio	TBT Ratio			
		89	756	105	1292	109	110			
CED	BW	WW	YW	SC	MILK	\$M	\$W	\$F	\$B	\$C
+2	+2.7	+80	+144	+1.42	+28	+69	+72	+115	+190	+315

This growth bull checks all the boxes, high weaning weight, high yearling weight, outstanding feed efficiency (RADG), high fertility, milk, heifer pregnancy, and great carcass. His dam is a favorite, she is a consistent producer with great feet and a docile attitude.

## 56 Windy Ridge Jet Setter 336 Windy Ridge Angus

Black Angus		Bar R Jet Black 5063		Entry Wt	Final Wt					
AAA#:	20761055	Woirhaye Jet Setter 0755		740	1166					
DOB:	02/17/23	M A R Blackcap Empress 1755		ADG	ADG Ratio					
Tattoo:	336	Granger Powerline 560		3.70	100					
		Windy Ridge Sunflower 823		WDA	WDA Ratio					
		Windy Ridge Sunflower 356		3.04	96					
		BW	205 Day Wt.	205 Day Ratio	365 Day Wt.	365 Day Ratio	TBT Ratio			
		81	710	99	1124	94	98			
CED	BW	WW	YW	SC	MILK	\$M	\$W	\$F	\$B	\$C
+14	-.6	+60	+117	+1.86	+39	+83	+68	+110	+163	+294

Lot 56 is a heifer bull that you will want to keep all of his daughters in herd. They will be easy calving, feed efficient, with high heifer pregnancy, and will be great milk producers. The dam's production is 4 BR 102, 4 WR 103, and 3 YR 103. She is good footed.

## 55 Windy Ridge Jet Setter 334 Windy Ridge Angus

Black Angus		Bar R Jet Black 5063		Entry Wt	Final Wt					
AAA#:	20761054	Woirhaye Jet Setter 0755		903	1290					
DOB:	02/12/23	M A R Blackcap Empress 1755		ADG	ADG Ratio					
Tattoo:	334	Granger Powerline 560		3.37	91					
		Windy Ridge Stella 738		WDA	WDA Ratio					
		Windy Ridge Stella 401		3.32	105					
		BW	205 Day Wt.	205 Day Ratio	365 Day Wt.	365 Day Ratio	TBT Ratio			
		92	757	105	1236	104	100			
CED	BW	WW	YW	SC	MILK	\$M	\$W	\$F	\$B	\$C
+3	+3.2	+77	+138	+0.49	+25	+56	+65	+120	+172	+279

Lot 55 is a thick, straight-backed bull out of a great cow family produced by Granger Powerline 560. His dam's production is 4 BR 102, 4 WR 103, and 3 YR 100.

## 57 McFadgen Goalkeeper Bud 322 McFadgen Angus

Black Angus		Sydgen Enhance		Entry Wt	Final Wt					
AAA#:	20776584	Baldrige SR Goalkeeper		804	1150					
DOB:	03/10/23	Baldrige Isabel E030		ADG	ADG Ratio					
Tattoo:	322	Raven Powerball 53		3.01	81					
		Mcfadgen Pauley 01W		WDA	WDA Ratio					
		Mcfadgen Amber 701		3.17	100					
		BW	205 Day Wt.	205 Day Ratio	365 Day Wt.	365 Day Ratio	TBT Ratio			
		87	734	103	1200	101	95			
CED	BW	WW	YW	SC	MILK	\$M	\$W	\$F	\$B	\$C
+9	-.4	+74	+139	+1.18	+32	+62	+72	+114	+188	+306

This bull sired by Baldrige SR Goalkeeper has been a standout since birth, with a great set of EPD's to match! He ranks in the top 10% in \$C, \$Beef, \$Feedlot and RADG; also top 20% for \$Weaning & Marbling. His Sire, Goalkeeper, sold as the lead-off and \$90,000 top seller of the 2020 Baldrige Bull Sale. Goalkeeper has been ORIGEN's export sales leader for the past 2 years. He is out of a really good Powerball Dam whose \$C is top 10%.



(Pictured is Bar R Jet Black 5063- Sire of 0755)

Woirhaye Jet Setter 0755 - Sire of Lots 55 & 56



Baldrige SR Goalkeeper - Sire of Lot 57

# BLACK ANGUS BULLS

## 60 McFadgen Kingston 312

[DDF-OHF]

McFadgen Angus

Black Angus

AAA#: 20854310

DOB: 03/02/23

Tattoo: 312

KM Broken Bow 002  
3C Broken Bow 908G  
3C Eriskay Timeless 1321

Fruhlings Safebet 1166  
McFadgen Isabella 89  
McFadgen Isabella 620

Entry Wt	Final Wt
679	1077
ADG	ADG Ratio
3.46	93
WDA	WDA Ratio
2.90	92



BW	205 Day Wt.	205 Day Ratio	365 Day Wt.	365 Day Ratio	TBT Ratio
86	705	100	1110	93	95

CED	BW	WW	YW	SC	MILK	\$M	\$W	\$F	\$B	\$C
+5	+1.4	+62	+106	+1.18	+20	+60	+60	+82	+120	+216

This bull goes back to KM Broken Bow 002. We like the calves out of the 3C Broken Bow which usually weigh around 86 to 89 lbs. at birth and wean at good weights in the Fall. The replacement heifers are good and nice to handle. The Dam of this bull is a really good cow who has a good calf every year and is very maternal, with a good udder.

## 61 KW Yukon Beau 31

[AMF-CAF-D2F-DDF-M1F-NHF-OHF-OSF-RDF]

Wild Kat Angus

Black Angus

AAA#: 20613981

DOB: 03/03/23

Tattoo: 31

V A R Signal 7244  
SF Yukon H204  
SF Everelda Entense F166

PA Safeguard 021  
Warner's Safe Beauty 603  
Mytty Kinochtry Beauty 1033

Entry Wt	Final Wt
776	1141
ADG	ADG Ratio
3.17	86
WDA	WDA Ratio
3.08	98



BW	205 Day Wt.	205 Day Ratio	365 Day Wt.	365 Day Ratio	TBT Ratio
87	751	100	1192	101	96

CED	BW	WW	YW	SC	MILK	\$M	\$W	\$F	\$B	\$C
+9	+1.4	+78	+145	+1.18	+28	+92	+75	+126	+178	+323

This bull records 20 EPDs at or above the 30% level. He has reasonable calving ease EPDs. His Maternal traits of top 3% \$M, 5% HP, 25% CEM, coupled with great foot scores and moderate MILK make a superb replacement heifer producer. His 5% \$C, 3% \$F, 10% CW, 15% \$W means he will be a very profitable addition to any herd.



(Pictured is V A R Signal 7244- Sire of H204)

SF Yukon H204 - Sire of Lot 61

## 62 KW Safeway HD 32

[AMF-CAF-D2F-DDF-M1F-NHF-OHF-OSF-RDF]

Wild Kat Angus

Black Angus

AAA#: 20611164

DOB: 03/06/23

Tattoo: 32

SF Speedway A187  
KW Safeway 2020  
Warner's Safe Beauty 603

Hoover Dam  
KW ER Beauty 010  
ER Beauty N264



BW	205 Day Wt.	205 Day Ratio	365 Day Wt.	365 Day Ratio	TBT Ratio
85	689	100	1181	94	96

CED	BW	WW	YW	SC	MILK	\$M	\$W	\$F	\$B	\$C
+3	+1.3	+67	+129	+1.09	+31	+41	+63	+108	+171	+263

Use him on cows. Having a great pedigree, he offers a set of highly balanced traits when bred into your herd. His carcass trait values show he will produce Certified Angus Beef with pounds on the scale. He will be an outcross to most herds.

## 63 Lewis Statement 334

Lewis Land & Livestock

Black Angus

AAA#: 20783730

DOB: 03/10/23

Tattoo: 334

Stevenson Statement 70750  
Stevenson Statement 0023  
Stevenson Chloe 8321

Stevenson Final Product 3842  
Lewis Secret Beauty 839F  
KG Secret Beauty 062



BW	205 Day Wt.	205 Day Ratio	365 Day Wt.	365 Day Ratio	TBT Ratio
77	686	109	1202	101	105

CED	BW	WW	YW	SC	MILK	\$M	\$W	\$F	\$B	\$C
+10	+3	+81	+146	-.23	+18	+53	+66	+108	+160	+261

334 is an extremely big spread bull, coupling calving ease (top 20% CED, top 30% BW) with impressive growth being in the top 10% on WW and top 10% on YW in the breed. His .75 RE EPD puts him in the top 35% of the breed and he is in the top 30% for \$W and \$B. His dam boasts 3 @ 95 BR, 4 at 103 WR, 2 at 97 YR, within an impressive 364-day calving interval. His sire, Stevenson Statement 0023, was the top selling bull in the Fall 21 Stevenson Angus sale and is noted for coupling moderate to easy calving with outstanding performance and carcass. He was a standout as a calf for his growth and length of body.



KW Safeway 2020 - Sire of Lot 62

# FROM BREED LEADING SIRES

## 64 Lewis Optimum 335

[OHP-DDF]

Black Angus

AAA#: 20783750

DOB: 03/11/23

Tattoo: 335

Deer Valley Growth Fund  
Deer Valley Optimum 9246  
G A R Progress 830

Thomas Big River 4081  
Lewis Ms Design's River 719E  
KG Ms Design's Paycheck 724T

## Lewis Land & Livestock

Entry Wt	Final Wt
790	1258
ADG	ADG Ratio
4.07	110
WDA	WDA Ratio
3.48	110



BW	205 Day Wt.	205 Day Ratio	365 Day Wt.	365 Day Ratio	TBT Ratio
82	770	122	1275	107	111

CED	BW	WW	YW	SC	MILK	\$M	\$W	\$F	\$B	\$C
+6	+3.3	+93	+165	+0.09	+26	+46	+77	+135	+197	+302

One of the very high-powered bulls in the sale, 335 topped his contemporaries with an impressive 122 weaning ratio and then gained an impressive 4.1 pounds/day on test. He has the shape, muscle, and wide top to back up his outstanding performance data. He ranks in the top 2% of the breed for WW and top 1% for YW. Not just a performance bull, he adds carcass merit ranking in the top 40% for Marbling (+0.78) and top 15% for RE (+0.97) and top 10% for \$W, top 1% for \$F, top 30% for \$G, and top 10% for \$B. His dam posts an impressive 362-day calving interval and his granddam has obtained Pathfinder status with her 9 progeny.

## 65 Lewis Stash 336

## Lewis Land & Livestock

Black Angus

AAA#: 20785249

DOB: 03/12/23

Tattoo: 336

Deer Valley Growth Fund  
EXAR Stash 0685B  
RMRK/GBCC Blackcap 5915

Thomas Big River 4081  
Lewis Clova Pride 745E  
Lewis Clova Pride 586

Entry Wt	Final Wt
725	1172
ADG	ADG Ratio
3.89	105
WDA	WDA Ratio
3.25	103



BW	205 Day Wt.	205 Day Ratio	365 Day Wt.	365 Day Ratio	TBT Ratio
67	704	112	1192	100	106

CED	BW	WW	YW	SC	MILK	\$M	\$W	\$F	\$B	\$C
+15	-1.3	+81	+151	+2.24	+33	+50	+84	+122	+169	+269

It is rare to find such an impressive look in a calving ease bull, but this incredible heifer bull prospect has it all. Phenotypically, he is deep bodied, heavy muscled with a square hip in a moderate, stout package. Not only is he in the top 3% of the breed for CED and top 10% on BW, he's still in the top 10% on WW and top 5% on YW. In addition, this curve bender is in the top 1% on SC, top 15% on milk, top 30% on RE, top 2% \$W, and top 4% \$F. His +0.81 REA EPD ranks him in the top 30% of the breed. His 'never miss' Pathfinder dam boasts 5 at a 368-day calving interval, 4 at 104 WR, and 1 at 111 YR. His sire, EXAR Stash 0685B, impresses both from a phenotypic and a data standpoint, offering outstanding growth with top end maternal and combination indexes. Don't miss this outstanding prospect for breeding heifers but still maintaining performance and look!



Stevenson Statement 0023 - Sire of Lots 63 & 67

## 66 Lewis Stash 337

[M1F]

Black Angus

AAA#: 20785246

DOB: 03/13/23

Tattoo: 337

Deer Valley Growth Fund  
EXAR Stash 0685B  
RMRK/GBCC Blackcap 5915

Stevenson Top Game 41523  
Rimrock Rose 861F  
Rimrock Rose 433B

## Lewis Land & Livestock

Entry Wt	Final Wt
644	1054
ADG	ADG Ratio
3.57	96
WDA	WDA Ratio
2.93	93



BW	205 Day Wt.	205 Day Ratio	365 Day Wt.	365 Day Ratio	TBT Ratio
77	663	105	1070	90	97

CED	BW	WW	YW	SC	MILK	\$M	\$W	\$F	\$B	\$C
+2	+2	+79	+133	+0.40	+33	+65	+80	+104	+135	+240

His sire, EXAR Stash 0685B offers big spread genetics with outstanding growth and maternal indexes. 337's dam posts 4 at a 365-day calving interval, 3 at 94 BR, 3 at 106 WR, 2 at 102 YR. The dam is a moderate framed, easy fleshing cow built for the rough country. He ranks in the top 15% of the breed for WW, top 20% for YW, top 15% for Milk, and top 5% for \$W, all in a moderate birth package.

## 67 Lewis Statement 341

[AMF-CAF-D2F-DDF-M1F-NHF-OHF-OSF-RDF]

Black Angus

AAA#: 20783742

DOB: 03/15/23

Tattoo: 341

Stevenson Statement 70750  
Stevenson Statement 0023  
Stevenson Chloe 8321

Stevenson Templeton 3308  
Lewis Ellen's Queen 512C  
KG Ellen's Queen 061

## Lewis Land & Livestock

Entry Wt	Final Wt
720	1106
ADG	ADG Ratio
3.36	90
WDA	WDA Ratio
3.09	98



BW	205 Day Wt.	205 Day Ratio	365 Day Wt.	365 Day Ratio	TBT Ratio
62	667	106	1132	95	97

CED	BW	WW	YW	SC	MILK	\$M	\$W	\$F	\$B	\$C
+14	-2.2	+59	+105	+1.61	+28	+73	+66	+92	+143	+258

It is time to rebuild the cowherd and here is the heifer bull of the sale! 341 is in the top 3% for BW and top 4% for CED. His +1.61 SC ranks him in the top 10% of the breed, indicating he will be able to breed more females over his career and also transmit greater fertility to his daughters. His dam is a moderate framed, easy fleshing, feminine cow that is fit for the shortgrass country. She's posted 7 at 88 BR, 7 at 100 WR, and 4 at 102 YR within a 368-day calving interval. His sire, Statement 0023, combines moderate to easy calving with performance and carcass.



Deer Valley Optimum 9246 - Sire of Lots 64 & 68

# BLACK ANGUS BULLS

## 68 Lewis Optimum 342

### Lewis Land & Livestock

**Black Angus**  
**AAA#:** 20783763  
**DOB:** 03/15/23  
**Tattoo:** 342

Deer Valley Growth Fund  
**Deer Valley Optimum 9246**  
 G A R Progress 830

Stevenson Danny Boy 1085  
**Rimrock Rose 595C**  
 Rimrock Rose 057

Entry Wt	Final Wt
702	1158
ADG	ADG Ratio
3.97	107
WDA	WDA Ratio
3.23	103

BW	205 Day Wt.	205 Day Ratio	365 Day Wt.	365 Day Ratio	TBT Ratio
77	682	108	1187	100	105

CED	BW	WW	YW	SC	MILK	\$M	\$W	\$F	\$B	\$C
+9	+1.1	+66	+127	+64	+26	+43	+60	+124	+158	+248

A moderate framed and attractive bull, 342's dam posts 5 at 100 BR, 5 at 103 WR, and 2 at 111 YR. He coupled his moderate birth with a 108 WR. His sire, Deer Valley Optimum 9246 is on the Select Sires lineup and is noted to combine phenotype with growth in a functional frame size. 342 ranks in the top 30% of the breed with a .78 REA and top 35% on \$B.

## 69 Lewis Stash 344

### Lewis Land & Livestock

**Black Angus**  
**AAA#:** 20785247  
**DOB:** 03/15/23  
**Tattoo:** 344

Deer Valley Growth Fund  
**EXAR Stash 0685B**  
 RMRK/GBCC Blackcap 5915

Thomas Big River 4081  
**Rimrock Starlett 867F**  
 Rimrock Starlett 594C

Entry Wt	Final Wt
691	1213
ADG	ADG Ratio
4.54	122
WDA	WDA Ratio
3.39	107

BW	205 Day Wt.	205 Day Ratio	365 Day Wt.	365 Day Ratio	TBT Ratio
82	682	108	1248	105	112

CED	BW	WW	YW	SC	MILK	\$M	\$W	\$F	\$B	\$C
+6	+2.2	+84	+150	+1.00	+26	+44	+75	+97	+122	+202

It is hard to miss this one in the pen! 344 is a big-time performance bull, with a phenomenal 4.54 ADG on test! He combines moderate birth while in the top 10% of the breed for WW, top 5% for YW and top 15% for \$W. Dam is a big volume cow who posts a 360-day calving interval, 3 at 107 WR, and 2 at 108 YR. Phenotypically, he is a big volumed, wide based bull who is stout made from end to end.



EXAR Stash 0685B - Sire of Lots 65, 66, 69 & 70

## 70 Lewis Stash 347

### Lewis Land & Livestock

**Black Angus**  
**AAA#:** 20785255  
**DOB:** 03/19/23  
**Tattoo:** 347

Deer Valley Growth Fund  
**EXAR Stash 0685B**  
 RMRK/GBCC Blackcap 5915

Stevenson Rockmount RX933  
**Lewis Clova Pride 519C**  
 KKL Clova Pride's Focus 331A



Entry Wt	Final Wt
698	1133
ADG	ADG Ratio
3.78	102
WDA	WDA Ratio
3.20	101

BW	205 Day Wt.	205 Day Ratio	365 Day Wt.	365 Day Ratio	TBT Ratio
87	696	110	1168	98	103

CED	BW	WW	YW	SC	MILK	\$M	\$W	\$F	\$B	\$C
+9	+1.7	+73	+135	+84	+25	+42	+65	+118	+179	+274

347's dam is a 'never miss, wish we had 100 of her' Pathfinder cow who is moderate, big volumed, and easy fleshing. She posts 7 at a 367-day calving interval, 6 at 110 WR, and 3 at 111 YR with bulls working for Wade Jacobsen and Stevenson Angus Ranch. His +0.95 marbling EPD ranks him in the top 25% of breed, while his \$B is in top 15% of breed, WW is in top 25% of breed, YW is in top 15% of breed. He is deep bodied, moderate framed with a square hip.

## 71 HCC Rainfall 2316

### Harwood Cattle Co

**Black Angus**  
**AAA#:** 20871044  
**DOB:** 03/19/23  
**Tattoo:** 2316

Coleman Charlo 0256  
**S A V Rainfall 6846**  
 S A V Blackcap May 4136

Pine Coulee Battle W815  
**Pine Coulee Queen W A16**  
 Plattermere Queen W 643



Entry Wt	Final Wt
736	1178
ADG	ADG Ratio
3.84	104
WDA	WDA Ratio
3.33	105

BW	205 Day Wt.	205 Day Ratio	365 Day Wt.	365 Day Ratio	TBT Ratio
91	837	100	1228	103	102

CED	BW	WW	YW	SC	MILK	\$M	\$W	\$F	\$B	\$C
+4	+2.1	+66	+124	+32	+20	+55	+55	+107	+151	+251

This Rainfall bull is out of an outstanding New Worth granddaughter that our pick in a past Pine Coulee sale. She is massive in her design, big footed and has an udder that is near perfect at 11 years of age. Ask anybody who has Rainfall daughters, and they will tell you they are maybe some of the best females they have ever had. If you like them deep and stout made and loaded with eye appeal here he is.



S A V Rainfall 6846 - Sire of Lot 71

# FROM BREED LEADING SIRES

## 72 HCC Incentive 2330

Harwood Cattle Co

Black Angus

AAA#: 20900956

DOB: 03/24/23

Tattoo: 2330

Sitz Stellar 726D  
SITZ Incentive 704H  
SITZ Barbaramere Nell 53F

S A V Bismarck 5682  
HA Rito Lady 5330

HA Rito Lady 1695

Entry Wt	Final Wt
805	1215
ADG	ADG Ratio
3.57	96
WDA	WDA Ratio
3.48	110
365 Day Ratio	TBT Ratio
106	101

ANGUSGS  
Powered by Neogen GenScan

BW	205 Day Wt.	205 Day Ratio	365 Day Wt.	365 Day Ratio	TBT Ratio
79	805	100	1266	106	101

CED	BW	WW	YW	SC	MILK	\$M	\$W	\$F	\$B	\$C
+8	-.6	+77	+121	-.29	+19	+91	+74	+96	+128	+257

This Sitz Incentive bull is a maternal brother to the second high selling bull last year in the Treasure Test sale. The Sitz Incentives have been very popular selling this spring.



Sitz Incentive 704H - Sire of Lot 72

## 73 CAK All In 3-16

Krantz Angus

Black Angus

AAA#: 20731020

DOB: 01/24/23

Tattoo: 2316

GDAR All Pro 519  
GDAR All In 024  
GDAR Shoshone Lady 88

O C C Unmistakable 946U  
Ox Bow Polly 8144

Ox Bow Polly 20

Entry Wt	Final Wt
840	1321
ADG	ADG Ratio
4.18	113
WDA	WDA Ratio
3.24	103

HD50K

BW	205 Day Wt.	205 Day Ratio	365 Day Wt.	365 Day Ratio	TBT Ratio
93	685	107	1309	110	110

CED	BW	WW	YW	SC	MILK	\$M	\$W	\$F	\$B	\$C
+3	+3.5	+91	+168	+45	+29	+61	+77	+113	+155	+262

One of the top WW (92 EPD) and YW (166 EPD) bulls in the sale. DNA data shows the top 1% WW and YW of the breed. Expect a calm, long, average frame size, high-capacity bull. The sire, "All In 024" from Gartner-Denowh Angus in Sidney sires a lot of vigor at birth, the calves hit the ground growing, explosive growth. The bull travels really well and his dam is a beautiful cow and a feature donor for them.



GDAR All In 024 - Sire of Lots 73 & 74

## 74 Carters all In 315

Krantz Angus

Black Angus

AAA#: 20741547

DOB: 01/21/23

Tattoo: 2315

GDAR All Pro 519  
GDAR All In 024  
GDAR Shoshone Lady 88

B/R New Day 454  
Krein Miss Madam Mim 444

La Beth Miss Natalie 108

Entry Wt	Final Wt
786	1248
ADG	ADG Ratio
4.02	108
WDA	WDA Ratio
3.04	96

HD50K

BW	205 Day Wt.	205 Day Ratio	365 Day Wt.	365 Day Ratio	TBT Ratio
98	683	107	1218	102	106

CED	BW	WW	YW	SC	MILK	\$M	\$W	\$F	\$B	\$C
-6	+6.5	+74	+132	+09	+19	+51	+44	+94	+149	+244

An excellent growth, gain, eye appeal bull that is very easy to be around. His dam produced the 3rd place TBT Jackpot Bull (113 TBT ratio) in 2021 for LK Bar Angus. The sire, "All In 024" from Gartner -Denowh Angus in Sidney sires a lot of vigor at birth, the calves hit the ground growing, explosive growth. The bull travels really well and his dam is a beautiful cow and a feature donor for them.



HA Cowboy Kind 8157 - Sire of Lot 75

# BLACK ANGUS BULLS

**75 MSU Cowboy Kind 22215** **MSU Angus**  
[CAF-D2F-DDF-M1F-NHF-OHF-OSF-RDF]

Black Angus  
 AAA#: 20765689  
 DOB: 04/20/22  
 Tattoo: 22215

HA Cowboy Up 5405  
 HA Cowboy Kind 8157  
 HA Lass 3303  
 S Cornerstone 607  
 MSU Ms MAC 20229  
 Vermilion Lass 0213

Entry Wt	Final Wt
1338	1667
ADG	ADG Ratio
2.86	88
WDA	WDA Ratio
2.43	77

BW	205 Day Wt.	205 Day Ratio	365 Day Wt.	365 Day Ratio	TBT Ratio
77	529	93	995	104	95

CED	BW	WW	YW	SC	MILK	\$M	\$W	\$F	\$B	\$C
+11	-1.9	+55	+96	+1.09	+31	+48	+62	+67	+110	+191

A sure shot heifer bull out of the popular and proven HA Cowboy Kind. This bulls dam is a direct daughter of the pathfinder donor cow Vermilion Lass 0213.

**78 MSU Fort Ellis 22231** **MSU Angus**  
[AMF-CAF-D2F-DDF-M1F-NHF-OHF-OSF-RDF]

Black Angus  
 AAA#: 20764415  
 DOB: 04/27/22  
 Tattoo: 22231

SITZ Logo 12964  
 Sitz Logo 8148  
 SITZ Barbaramere Nell 912  
 SRS Capstone 0671C  
 SRS Elba 7244E  
 SRS Elba 2257Z

Entry Wt	Final Wt
1468	1919
ADG	ADG Ratio
3.92	120
WDA	WDA Ratio
2.82	89

BW	205 Day Wt.	205 Day Ratio	365 Day Wt.	365 Day Ratio	TBT Ratio
90	589	103	967	101	108

CED	BW	WW	YW	SC	MILK	\$M	\$W	\$F	\$B	\$C
+8	+8	+76	+130	+1.52	+18	+52	+62	+93	+143	+237

Another well balanced 8148 son that is negative on PAP. Dam is a productive cow that was donated to the program from Skinner Ranch. Bull should add performance to your calf crop.

**76 MSU Red Bluff 22233** **MSU Angus**  
[AMF-CAF-D2F-DDF-M1F-NHF-OHF-OSF-RDF]

Black Angus  
 AAA#: 20764417  
 DOB: 04/29/22  
 Tattoo: 22233

SITZ Logo 12964  
 Sitz Logo 8148  
 SITZ Barbaramere Nell 912  
 SITZ Reload 411C  
 GDAR Sapphire 7294  
 GDAR Sapphire 3179

Entry Wt	Final Wt
1330	1617
ADG	ADG Ratio
2.50	76
WDA	WDA Ratio
2.37	75

BW	205 Day Wt.	205 Day Ratio	365 Day Wt.	365 Day Ratio	TBT Ratio
84	588	103	946	99	93

CED	BW	WW	YW	SC	MILK	\$M	\$W	\$F	\$B	\$C
+6	+3	+64	+112	+1.47	+29	+74	+70	+62	+96	+199

A low PAP 8148 son that ranks in the top 25% of the breed for \$M. Dam is moderate made Sitz Reload daughter that posts a 98 birth ratio and 103 weaning ratio on 3 calves.

**79 MSU Logarithm 22236** **MSU Angus**  
[AMF-CAF-D2F-DDF-M1F-NHF-OHF-OSF-RDF]

Black Angus  
 AAA#: 20764414  
 DOB: 04/30/22  
 Tattoo: 22236

SITZ Logo 12964  
 Sitz Logo 8148  
 SITZ Barbaramere Nell 912  
 HARB Stur-D 191 JH  
 S&R Ms Stur-D 191-741  
 S&R Ms Frontman 158

Entry Wt	Final Wt
1450	1836
ADG	ADG Ratio
3.36	103
WDA	WDA Ratio
2.71	86

BW	205 Day Wt.	205 Day Ratio	365 Day Wt.	365 Day Ratio	TBT Ratio
90	555	97	960	100	100

CED	BW	WW	YW	SC	MILK	\$M	\$W	\$F	\$B	\$C
+10	-.4	+60	+111	+1.46	+21	+70	+56	+82	+123	+230

Calving ease bull that performed well on test. Dam is a hard-working cow that was donated by the Gardner family and goes back to the breed legend Leachman Right Time.

**77 MSU Logistics 22225** **MSU Angus**  
[AMF-CAF-D2F-DDF-M1F-NHF-OHF-OSF-RDF]

Black Angus  
 AAA#: 20764416  
 DOB: 04/25/22  
 Tattoo: 22225

SITZ Logo 12964  
 Sitz Logo 8148  
 SITZ Barbaramere Nell 912  
 HA Cowboy Up 5405  
 HA Blackbird 7637  
 HA Blackbird 8002

Entry Wt	Final Wt
1397	1696
ADG	ADG Ratio
2.60	80
WDA	WDA Ratio
2.49	79

BW	205 Day Wt.	205 Day Ratio	365 Day Wt.	365 Day Ratio	TBT Ratio
89	551	97	938	98	92

CED	BW	WW	YW	SC	MILK	\$M	\$W	\$F	\$B	\$C
+10	-.8	+64	+109	+1.17	+25	+79	+67	+81	+117	+231

A pedigree full of proven maternal genetics with both Logo 8148 and Cowboy Kind. Heifer bull that ranks well above breed average for SC, HP, and CEM. This bull should produce the right kind of females.

**80 MSU Logo 22208** **MSU Angus**  
[AMF-CAF-D2F-DDF-M1F-NHF-OHF-OSF-RDF]

Black Angus  
 AAA#: 20764413  
 DOB: 04/17/22  
 Tattoo: 22208

SITZ Logo 12964  
 Sitz Logo 8148  
 SITZ Barbaramere Nell 912  
 SRS Blockbuster 2256B  
 SRS Manor 9201G  
 SRS Manor 4221B

Entry Wt	Final Wt
1434	1822
ADG	ADG Ratio
3.37	103
WDA	WDA Ratio
2.64	84

BW	205 Day Wt.	205 Day Ratio	365 Day Wt.	365 Day Ratio	TBT Ratio
108	663	116	1010	105	108

CED	BW	WW	YW	SC	MILK	\$M	\$W	\$F	\$B	\$C
+2	+2.9	+93	+153	+1.48	+21	+80	+81	+88	+120	+236

If you want to add pounds look here! This 8148 son ranks in the top 5% of the breed for both WW and YW. Bull also ranks above breed average for feet and PAP EPDs.

# FROM BREED LEADING SIRES

**81 MSU Logo 22224** **MSU Angus**  
[AMF-CAF-D2F-DDF-M1F-NHF-OHF-OSF-RDF]

**Black Angus**  
 AAA#: 20764411  
 DOB: 04/25/22  
 Tattoo: 22224

SITZ Logo 12964  
**Sitz Logo 8148**  
 SITZ Barbaramere Nell 912

O C C Cortez 819C  
**MSU Ms Cortez 19205**  
 S&R Ms Stur-D 191-741

Entry Wt	Final Wt
1356	1789
ADG	ADG Ratio
3.77	115
WDA	WDA Ratio
2.62	83

BW	205 Day Wt.	205 Day Ratio	365 Day Wt.	365 Day Ratio	TBT Ratio
92	581	102	957	100	106

CED	BW	WW	YW	SC	MILK	\$M	\$W	\$F	\$B	\$C
+4	+1.1	+66	+111	+.95	+26	+81	+69	+63	+89	+196

This bull comes from one of my favorite cows on the place. Dam is moderate with plenty of capacity and excellent feet. This bull should produce some excellent daughters.

**82 MSU Logo 22235** **MSU Angus**

**Black Angus**  
 AAA#: 20886369  
 DOB: 05/02/22  
 Tattoo: 22235

SITZ Logo 12964  
**Sitz Logo 8148**  
 SITZ Barbaramere Nell 912

A A R Dash 1802  
**Kel McC Miss Ideal 438 701**  
 Kel McC Miss Ideal 215 438

Entry Wt	Final Wt
1438	1871
ADG	ADG Ratio
3.77	115
WDA	WDA Ratio
2.77	88

BW	205 Day Wt.	205 Day Ratio	365 Day Wt.	365 Day Ratio	TBT Ratio
87	614	108	1006	105	109

CED	BW	WW	YW	SC	MILK	\$M	\$W	\$F	\$B	\$C
+9	-.9	+68	+121	+1.44	+26	+57	+64	+88	+121	+214

A long bodied and athletic heifer bull that looks great on the move. Dam is a 7-year-old Dash daughter that has done a nice job.



Sitz Logo 8148 - Sire of Lots 76-82

**86 GSAR 23K Top Game 53N** **Gem State Angus**

**Black Angus**  
 AAA#: 20728190  
 DOB: 03/04/23  
 Tattoo: 53N

Sitz Top Game 561X  
**GSAR Top Game 23K**  
 Sitz JLS Lass 64N

S Foundation 514  
**GSAR Miss Dawn 12H**  
 GSAR Miss Dawn 27Z

Entry Wt	Final Wt
664	1043
ADG	ADG Ratio
3.30	89
WDA	WDA Ratio
2.83	90

BW	205 Day Wt.	205 Day Ratio	365 Day Wt.	365 Day Ratio	TBT Ratio
71	716	107	1050	88	95

CED	BW	WW	YW	SC	MILK	\$M	\$W	\$F	\$B	\$C
+9	+5	+53	+93	+1.29	+23	+64	+54	+84	+137	+242

Heifer Bull Prospect - this bull stacks up some of the best maternal bulls Sitz & Gartner-Denowh has produced. This bull has longevity and maternal function on the top and bottom of his pedigree. His paternal granddam was in production until she was 18 years old and his maternal granddam out of Density is in production at 12 years old.

**87 GSAR 23K Top Game 57N** **Gem State Angus**

**Black Angus**  
 AAA#: 20728184  
 DOB: 03/04/23  
 Tattoo: 57N

Sitz Top Game 561X  
**GSAR Top Game 23K**  
 Sitz JLS Lass 64N

Soo Line Motive 9016  
**GSAR Blackbird 17D**  
 GSAR Blackbird 914

Entry Wt	Final Wt
678	1062
ADG	ADG Ratio
3.34	90
WDA	WDA Ratio
2.88	91

BW	205 Day Wt.	205 Day Ratio	365 Day Wt.	365 Day Ratio	TBT Ratio
80	687	102	1059	89	94

CED	BW	WW	YW	SC	MILK	\$M	\$W	\$F	\$B	\$C
+10	+1.2	+63	+107	+1.99	+31	+84	+68	+95	+123	+244

Heifer Bull Prospect - this bull comes from a 10-year-old cow that has done a fantastic job. She is a larger framed, near perfect uddered Motive daughter and the Blackbirds have been some of our best producers. Should leave outstanding daughters!



(Pictured is Sitz Top Game 561X - Sire of Lots 86-88)

GSAR Top Game 23K - Sire of Lots 86-88

# BLACK ANGUS BULLS

## 88 GSAR 23K Top Game 58N Gem State Angus

**Black Angus**  
 AAA#: 20728194  
 DOB: 03/07/23  
 Tattoo: 58N

Sitz Top Game 561X  
**GSAR Top Game 23K**  
 Sitz JLS Lass 64N

Sitz Dollar Up 489Z  
**GSAR Miss Dawn 22J**  
 GSAR Miss Dawn 32E

Entry Wt	Final Wt
655	1055
ADG	ADG Ratio
3.48	94
WDA	WDA Ratio
2.88	91

BW	205 Day Wt.	205 Day Ratio	365 Day Wt.	365 Day Ratio	TBT Ratio
88	710	106	1075	90	97

CED	BW	WW	YW	SC	MILK	\$M	\$W	\$F	\$B	\$C
+3	+2.7	+65	+116	+1.01	+29	+75	+61	+87	+118	+228

Performance bull that should leave a nice set of feeders. Keep these brothers together and let them go to work!

## 91 Hamilton Clearwater L305 Hamilton Angus

**Black Angus**  
 AAA#: 20752088  
 DOB: 02/15/23  
 Tattoo: L305

Connealy Confidence Plus  
**Connealy Clearwater**  
 Ensa of Conanga 610

Basin Payweight 1682  
**Hamilton Bobby 1906**  
 VHAR CAL Bobby 1624

Entry Wt	Final Wt
764	1211
ADG	ADG Ratio
3.89	105
WDA	WDA Ratio
3.14	99

BW	205 Day Wt.	205 Day Ratio	365 Day Wt.	365 Day Ratio	TBT Ratio
83	765	103	1173	99	102

CED	BW	WW	YW	SC	MILK	\$M	\$W	\$F	\$B	\$C
+1	+2.2	+70	+125	+2.9	+33	+72	+76	+91	+155	+273

A deep bodied and high growth Clearwater son that weaned off the cow at 765 lbs. and posted an ADG on test of 3.89/ratio 105. A bull that can add both growth and carcass value ranking above breed average for both marbling and ribeye area. Dam is a moderate made 1682 daughter with a solid udder.



Connealy Clearwater - Sire of Lots 91-94

## 92 Hamilton Clearwater L303 Hamilton Angus

**Black Angus**  
 AAA#: 20748889  
 DOB: 02/02/23  
 Tattoo: L303

Connealy Confidence Plus  
**Connealy Clearwater**  
 Ensa of Conanga 610

Rito 9M25 of Rita 5F56 Pred  
**Shaw Lady Rito 9M25 4087**  
 Shaw Lady New Day 642S

Entry Wt	Final Wt
775	1220
ADG	ADG Ratio
3.87	104
WDA	WDA Ratio
3.06	97

BW	205 Day Wt.	205 Day Ratio	365 Day Wt.	365 Day Ratio	TBT Ratio
78	701	94	1138	96	98

CED	BW	WW	YW	SC	MILK	\$M	\$W	\$F	\$B	\$C
+6	+1.9	+52	+98	+7.9	+24	+52	+49	+88	+149	+245

Long made bull that performed well on test and stems from a hardworking and productive 10-year-old cow. Bull ranks in the top 25% for marbling and should add carcass value and produce functional females.

## 93 Hamilton Clearwater L302 Hamilton Angus

**Black Angus**  
 AAA#: 20748888  
 DOB: 01/27/23  
 Tattoo: L302

Connealy Confidence Plus  
**Connealy Clearwater**  
 Ensa of Conanga 610

Basin Payweight 1682  
**Shaw Lady Payweight 6059**  
 Shaw Lady Upward 1186Y

Entry Wt	Final Wt
846	1246
ADG	ADG Ratio
3.48	94
WDA	WDA Ratio
3.08	98

BW	205 Day Wt.	205 Day Ratio	365 Day Wt.	365 Day Ratio	TBT Ratio
76	739	100	1150	97	97

CED	BW	WW	YW	SC	MILK	\$M	\$W	\$F	\$B	\$C
+2	+4	+56	+107	+4.7	+31	+76	+64	+100	+153	+274

Another moderate made and athletic Clearwater son that comes from an 8-year-old 1682 daughter. This bull ranks high on foot EPDs and is structurally sound making him a great candidate to go out and cover big country.

## 94 Hamilton Clearwater L300 Hamilton Angus

**Black Angus**  
 AAA#: 20746035  
 DOB: 01/24/23  
 Tattoo: L300

Connealy Confidence Plus  
**Connealy Clearwater**  
 Ensa of Conanga 610

Sitz Top Game 561X  
**Shaw Lady Top Game 4136**  
 Shaw Lady Alliance 586R

Entry Wt	Final Wt
910	1323
ADG	ADG Ratio
3.59	97
WDA	WDA Ratio
3.24	103

BW	205 Day Wt.	205 Day Ratio	365 Day Wt.	365 Day Ratio	TBT Ratio
71	763	103	1213	102	101

CED	BW	WW	YW	SC	MILK	\$M	\$W	\$F	\$B	\$C
+13	-1.9	+54	+109	+5.0	+34	+56	+62	+69	+114	+204

A sure shot heifer bull that is long, athletic, and has a nice muscle pattern. Perfect for going out and covering big country and should produce cattle with eye appeal and functionality. Bulls dam is a nice 10-year-old daughter of Sitz Top Game.



# FROM BREED LEADING SIRES

## 95 Occ Atlantis 3150 Olson Cattle Co

Black Angus S A V Rainfall 6846  
 AAA#: 20887981 Square B Atlantis 8060  
 DOB: 02/24/23 Elbanna of Conanga 1209  
 Tattoo: 3150 Connealy Consensus 7229  
 OCC Lucy 670  
 OCC Lucy 114

	Entry Wt	Final Wt
	896	1340
	ADG	ADG Ratio
	3.86	104
	WDA	WDA Ratio
	3.55	113

	BW	205 Day Wt.	205 Day Ratio	365 Day Wt.	365 Day Ratio	TBT Ratio
	75	832	110	1306	110	108

CED	BW	WW	YW	SC	MILK	\$M	\$W	\$F	\$B	\$C
+5	+2.6	+75	+125	+1.21	+30	+60	+71	+93	+163	+271

Study these 6 Square B Atlantis sons (Lots 95-100) and you will find that you will be hard pressed to find a group of half-brothers with this caliber of consistency and quality. Dam WR 6@0109, YR 5@105. This Atlantis son stems from a high-performance maternal cow family. He combines power and mass in a complete package. Marb EPD +.95, RE EPD +.90. A maternal brother to lot 95 sold at 2023 Midland Bull Test for \$15,000.

## 98 Occ Atlantis 3280 Olson Cattle Co

Black Angus S A V Rainfall 6846  
 AAA#: 20891285 Square B Atlantis 8060  
 DOB: 03/14/23 Elbanna of Conanga 1209  
 Tattoo: 3280 Connealy Spur  
 OCC Lucy 844  
 OCC Lucy 620

	Entry Wt	Final Wt
	793	1298
	ADG	ADG Ratio
	4.39	118
	WDA	WDA Ratio
	3.62	115

	BW	205 Day Wt.	205 Day Ratio	365 Day Wt.	365 Day Ratio	TBT Ratio
	79	856	113	1319	111	114

CED	BW	WW	YW	SC	MILK	\$M	\$W	\$F	\$B	\$C
+4	+1.9	+60	+109	+83	+38	+60	+65	+100	+147	+251

Dam WR 3@107, YR 3@105. Dam is a deep bodied easy fleshing female with excellent feet and a perfect udder. Lot 98 possesses loads of thickness, power, and structural correctness. Reserve Champion WDA ~ Member of Champion Sire Group.

## 96 Occ Atlantis 3230 Olson Cattle Co

Black Angus S A V Rainfall 6846  
 AAA#: 20892627 Square B Atlantis 8060  
 DOB: 02/28/23 Elbanna of Conanga 1209  
 Tattoo: 3230 Lafins South Wind 5258  
 OCC Montana Dream 223  
 OCC Montana Dream 946

	Entry Wt	Final Wt
	884	1264
	ADG	ADG Ratio
	3.30	89
	WDA	WDA Ratio
	3.39	107

	BW	205 Day Wt.	205 Day Ratio	365 Day Wt.	365 Day Ratio	TBT Ratio
	78	835	110	1265	106	102

CED	BW	WW	YW	SC	MILK	\$M	\$W	\$F	\$B	\$C
-5	+3.7	+66	+103	+82	+28	+62	+62	+92	+131	+232

Dam WR 8@106, YR 7@107. Extra length and performance in this Atlantis son that will add pounds at weaning time.

## 99 Occ Atlantis 3300 Olson Cattle Co

Black Angus S A V Rainfall 6846  
 AAA#: 20891438 Square B Atlantis 8060  
 DOB: 03/17/23 Elbanna of Conanga 1209  
 Tattoo: 3300 OCC 4-Ward 720  
 OCC Erica 153  
 OCC Erica 602

	Entry Wt	Final Wt
	793	1233
	ADG	ADG Ratio
	3.83	103
	WDA	WDA Ratio
	3.46	110

	BW	205 Day Wt.	205 Day Ratio	365 Day Wt.	365 Day Ratio	TBT Ratio
	80	836	110	1284	108	107

CED	BW	WW	YW	SC	MILK	\$M	\$W	\$F	\$B	\$C
+4	+3.8	+67	+114	+1.49	+25	+72	+57	+88	+149	+265

Dam WR 9@104, YR 6@105. A full sister to lot 99 has been retained at OCC.

## 97 Occ Atlantis 3250 Olson Cattle Co

Black Angus S A V Rainfall 6846  
 AAA#: 20892610 Square B Atlantis 8060  
 DOB: 03/02/23 Elbanna of Conanga 1209  
 Tattoo: 3250 A A R Ten X 7008 S A  
 OCC Blackbird 672  
 LA 878 503

	Entry Wt	Final Wt
	771	1299
	ADG	ADG Ratio
	4.59	124
	WDA	WDA Ratio
	3.50	111

	BW	205 Day Wt.	205 Day Ratio	365 Day Wt.	365 Day Ratio	TBT Ratio
	75	829	109	1283	108	114

CED	BW	WW	YW	SC	MILK	\$M	\$W	\$F	\$B	\$C
+9	+1	+59	+109	+90	+30	+64	+62	+83	+134	+238

Dam WR 6@109, YR 6@106. Grandam is a 20-year-old consistent producer at OCC and is the epitome of longevity. She has maintained a phenomenal calving interval producing 19 calves to date, while maintaining a picture-perfect udder and amazing foot structure. Lot 97 packs power and performance in a calving ease package. A full brother has been retained as a herd sire at OCC. 3rd Place Champion ADG ~ Member of Champion Sire Group.



Square B Atlantis 8061 - Sire of Lots 95-100

# BLACK ANGUS BULLS

**100** [M1F]

## Occ Atlantis 3320

**Olson Cattle Co**

Black Angus

AAA#: 20892629

DOB: 03/21/23

Tattoo: 3320

S A V Rainfall 6846  
**Square B Atlantis 8060**  
 Elbanna of Conanga 1209  
 OCC Ultimate Answer 118  
**OCC Montana Dream 356**  
 OCC Montana Dream 923

Entry Wt	Final Wt
738	1216
ADG	ADG Ratio
4.16	112
WDA	WDA Ratio
3.45	110

**ANGUSGS**  
Powered by Nogen Genesys

BW	205 Day Wt.	205 Day Ratio	365 Day Wt.	365 Day Ratio	TBT Ratio
82	827	109	1278	107	109

CED	BW	WW	YW	SC	MILK	\$M	\$W	\$F	\$B	\$C
+8	+4	+65	+108	+1.38	+32	+79	+78	+87	+138	+258

Dam WR 5@108, YR 4@106. Another Atlantis son that is wide based, structurally correct and packed full of meat. His dam is a moderate sized cow with tons of rib and mass in a feminine maternal package. **Member of Champion Sire Group.**

**101**

## Legacy Stellar 302

**Legacy Ridge Angus**

Black Angus

AAA#: 20749617

DOB: 03/04/23

Tattoo: 302

[AMF-CAF-D2F-DDF-M1F-NHF-OHF-OSF-RDF]  
 Mohnen Substantial 272  
**Sitz Stellar 726D**  
 SITZ Pride 200B  
 Basin Payweight 1682  
**Baldco Queen Mother 437**  
 Baldco Queen Mother 55

Entry Wt	Final Wt
787	1244
ADG	ADG Ratio
3.97	107
WDA	WDA Ratio
3.37	107

**ANGUSGS**  
Powered by Nogen Genesys

BW	205 Day Wt.	205 Day Ratio	365 Day Wt.	365 Day Ratio	TBT Ratio
79	734	100	1242	104	104

CED	BW	WW	YW	SC	MILK	\$M	\$W	\$F	\$B	\$C
+11	-1.5	+64	+117	+1.19	+21	+92	+63	+79	+123	+252

Mama cow maker right here! Look at this guy-Calving ease. Top 2% \$M. Excellent foot scores. Highly Maternal. Dam Baldco Queen Mother 437 was purchased from Baldridge Tiedeman female sale. She is an outstanding milker, perfect udder and exceptional mother. By combining her highly desired maternal traits with the calving ease powerhouse Sitz Stellar 726D along with his nearly perfect foot scores has produced this outstanding bull that will produce structurally correct beautiful maternal females for your herd. Calving ease. Foot Improver. Highly Maternal. BW -1.5 Top 10%, CED +11 Top 15%, CEM +13 Top 10%, \$M +92 Top 2%. Take your herd to the next level with this bull!



Sitz Stellar 726D - Sire of Lots 41, 42 & 101

**102**

## Linhart Pacific 3709 M L

**Linhart Angus**

Black Angus

AAA#: 20842194

DOB: 02/09/23

Tattoo: 3709

Hoover No Doubt  
**Sterling Pacific 904**  
 Baldridge Isabel B082  
 Soo Line Motive 9016  
**M L Zara 7309**  
 M L Zara 3097

Entry Wt	Final Wt
813	1302
ADG	ADG Ratio
4.25	115
WDA	WDA Ratio
3.32	105

**HO50K**

BW	205 Day Wt.	205 Day Ratio	365 Day Wt.	365 Day Ratio	TBT Ratio
78	762	104	1211	103	107

CED	BW	WW	YW	SC	MILK	\$M	\$W	\$F	\$B	\$C
+9	+1.3	+63	+121	+1.54	+28	+61	+61	+93	+138	+240

**104**

## RKP E043-Y100 302

**RK Perry**

Black Angus

AAA#: +20826080

DOB: 02/25/23

Tattoo: 302

Connealy Doc Neal  
**Vermilion Charge On**  
 Vermilion Eldorene 5165  
 Connealy Revenue 7289  
**FF Eisa Evergreen Y100**  
 FF Eisa Evergreen S85

Entry Wt	Final Wt
755	1210
ADG	ADG Ratio
3.96	107
WDA	WDA Ratio
3.22	102

**ANGUSGS**  
Powered by Nogen Genesys

BW	205 Day Wt.	205 Day Ratio	365 Day Wt.	365 Day Ratio	TBT Ratio
84	676	107	1185	100	105

CED	BW	WW	YW	SC	MILK	\$M	\$W	\$F	\$B	\$C
+5	+6	+58	+103	+0.03	+30	+56	+60	+78	+141	+239

Moderate frame dam was a high seller at the John Flesch Retirement Dispersal. Dam WR 8@107 YR 3@108. Half brother to a high selling bull at the 2023 TBT Sale.



Vermilion Charge On - Sire of Lots 104 & 106

# FROM BREED LEADING SIRES

## 105 RKP 316-0213 304

RK Perry

Black Angus  
AAA#: +20785680  
DOB: 02/26/23  
Tattoo: 304

Connealy Capitalist 028  
LD Capitalist 316  
LD Dixie Erica 2053  
Connealy Dublin 8223  
Vermilion Lass 0213  
Vermilion Lass 3298

Entry Wt	Final Wt
697	1141
ADG	ADG Ratio
3.86	104
WDA	WDA Ratio
3.04	96



ANGUS GS  
Powered by Neogen Genesys

BW	205 Day Wt.	205 Day Ratio	365 Day Wt.	365 Day Ratio	TBT Ratio
81	626	109	1120	94	102

CED	BW	WW	YW	SC	MILK	\$M	\$W	\$F	\$B	\$C
+10	+8	+66	+120	+1.11	+38	+54	+71	+119	+181	+289

Pathfinder Donor Dam from Vermilion Ranch. Dam WR 10@109 YR 9@109. Half brother to many high selling bulls at the last several TBT Sales.

## 107 RKP 0061-123 307

RK Perry

Black Angus  
AAA#: 20792548  
DOB: 03/05/23  
Tattoo: 307

Bar R Jet Black 5063  
Hoffman Thedford  
HA Rito Lady 3839  
Vermilion Abundant F325  
RKP F325-64 123  
RKP 1310-325 64

Entry Wt	Final Wt
675	1105
ADG	ADG Ratio
3.74	101
WDA	WDA Ratio
3.00	95



ANGUS GS  
Powered by Neogen Genesys

BW	205 Day Wt.	205 Day Ratio	365 Day Wt.	365 Day Ratio	TBT Ratio
75	709	100	1160	98	100

CED	BW	WW	YW	SC	MILK	\$M	\$W	\$F	\$B	\$C
+7	+2.2	+75	+128	+1.37	+38	+81	+81	+84	+150	+276

## 106 RKP E043-Y100 305

RK Perry

Black Angus  
AAA#: +20826089  
DOB: 02/26/23  
Tattoo: 305

Connealy Doc Neal  
Vermilion Charge On  
Vermilion Eldorene 5165  
Connealy Revenue 7289  
FF Eisa Evergreen Y100  
FF Eisa Evergreen S85

Entry Wt	Final Wt
747	1256
ADG	ADG Ratio
4.43	119
WDA	WDA Ratio
3.35	106



ANGUS GS  
Powered by Neogen Genesys

BW	205 Day Wt.	205 Day Ratio	365 Day Wt.	365 Day Ratio	TBT Ratio
83	665	107	1233	104	110

CED	BW	WW	YW	SC	MILK	\$M	\$W	\$F	\$B	\$C
+10	-.5	+57	+106	+3.35	+27	+56	+57	+86	+123	+216

Moderate frame dam was a high seller at the John Flesch Retirement Dispersal. Dam WR 8@107 YR 3@108. Half-brother to a high selling bull at the 2023 TBT Sale.

## 108 RKP H015-102 309

RK Perry

Black Angus  
AAA#: 20784193  
DOB: 03/07/23  
Tattoo: 309

SITZ Commerce 670F  
Vermilion Commerce H015  
Vermilion Ettarre 8046  
Ellingson Transcend 5212  
RKP 5212-0213 102  
Vermilion Lass 0213

Entry Wt	Final Wt
774	1218
ADG	ADG Ratio
3.86	104
WDA	WDA Ratio
3.33	105



ANGUS GS  
Powered by Neogen Genesys

BW	205 Day Wt.	205 Day Ratio	365 Day Wt.	365 Day Ratio	TBT Ratio
85	774	108	1285	108	107

CED	BW	WW	YW	SC	MILK	\$M	\$W	\$F	\$B	\$C
+0	+2.7	+77	+139	+6.0	+22	+37	+57	+97	+147	+228

Dam is a first calf heifer and Grand Dam is the mother of many high sellers at TBT. Dam WR 1@108 YR 1@105.



LD Capitalist 316 - Sire of Lot 105



Vermilion Commerce H015 - Sire of Lot 108

# BLACK ANGUS BULLS

## 109 RKP GL J280-045 314

**RK Perry**

Black Angus  
AAA#: 20784190  
DOB: 03/10/23  
Tattoo: 314

Myers Fair-N-Square M39  
Vermilion Fair N Square J280  
Vermilion Ettarre 6137

CS Sonny Boy 8024  
RKP GL-Janiece 045  
RKP GL-Janiece E45

Entry Wt	Final Wt
743	1134
ADG	ADG Ratio
3.40	92
WDA	WDA Ratio
3.12	99

BW	205 Day Wt.	205 Day Ratio	365 Day Wt.	365 Day Ratio	TBT Ratio
78	798	102	1203	101	98

CED	BW	WW	YW	SC	MILK	\$M	\$W	\$F	\$B	\$C
+8	+3	+71	+118	+28	+34	+76	+79	+104	+151	+272



Vermilion Fair N Square J280 - Sire of Lots 109, 112, 114, 116 & 128

## 110 RKP 133-122 320

**RK Perry**

Black Angus  
AAA#: 20784192  
DOB: 03/13/23  
Tattoo: 320

Poss Rawhide  
RKP Laramie 133  
Vermilion Lass 0213

Connealy King Air  
RKP 868F-3574 122  
Vermilion Lass 3574

Entry Wt	Final Wt
701	1130
ADG	ADG Ratio
3.73	101
WDA	WDA Ratio
3.14	100

BW	205 Day Wt.	205 Day Ratio	365 Day Wt.	365 Day Ratio	TBT Ratio
80	723	101	1211	102	101

CED	BW	WW	YW	SC	MILK	\$M	\$W	\$F	\$B	\$C
+7	+7	+65	+115	+1.04	+23	+39	+60	+102	+146	+228

Sire was the high selling bull at the 2022 TBT Sale.



RKP Laramie 133 - Sire of Lots 110, 121 & 122

*John Gaggins*

## 111 RKP GL J611-056 321

**RK Perry**

Black Angus  
AAA#: 20784195  
DOB: 03/14/23  
Tattoo: 321

Deer Valley Growth Fund  
Vermilion Growth Fund J611  
Vermilion Evergreen 3133

LB Hawkeye 817  
LB Lucy 056  
LB Upward Lucy 411

Entry Wt	Final Wt
753	1285
ADG	ADG Ratio
4.63	125
WDA	WDA Ratio
3.58	113

BW	205 Day Wt.	205 Day Ratio	365 Day Wt.	365 Day Ratio	TBT Ratio
88	761	106	1340	113	114

CED	BW	WW	YW	SC	MILK	\$M	\$W	\$F	\$B	\$C
+4	+1.7	+82	+148	+5.8	+30	+69	+78	+110	+134	+243

Dam WR 2@104 YR 1@110. Co-Champion ADG ~ 3rd Place Champion WDA ~ Member of Reserve Champion Sire Group



Vermilion Growth Fund J611 - Sire of Lots 111, 113, 115, 117, 118, 119 & 120

*Chris Mitchell*

# FROM BREED LEADING SIRES

**112** RKP GL J280-015 324 RK Perry  
[M1F]

Black Angus  
 AAA#: 20784191  
 DOB: 03/16/23  
 Tattoo: 324

Myers Fair-N-Square M39  
 Vermilion Fair N Square J280  
 Vermilion Ettarre 6137

CS Sonny Boy 8024  
 RKP GL-Janiece 015  
 Vermilion JL Janiece 732

Entry Wt	Final Wt
695	1189
ADG	ADG Ratio
4.30	116
WDA	WDA Ratio
3.33	106

BW	205 Day Wt.	205 Day Ratio	365 Day Wt.	365 Day Ratio	TBT Ratio
85	810	104	1265	106	109

CED	BW	WW	YW	SC	MILK	\$M	\$W	\$F	\$B	\$C
+5	+1.9	+81	+134	+98	+17	+78	+67	+85	+119	+232

**115** RKP GL J611-022 331 RK Perry

Black Angus  
 AAA#: 20784188  
 DOB: 03/22/23  
 Tattoo: 331

Deer Valley Growth Fund  
 Vermilion Growth Fund J611  
 Vermilion Evergreen 3133

LB Biff 852  
 LB Majesty Ideal 022  
 LB Majesty Ideal 864

Entry Wt	Final Wt
717	1180
ADG	ADG Ratio
4.03	109
WDA	WDA Ratio
3.36	107

BW	205 Day Wt.	205 Day Ratio	365 Day Wt.	365 Day Ratio	TBT Ratio
91	725	101	1253	105	105

CED	BW	WW	YW	SC	MILK	\$M	\$W	\$F	\$B	\$C
+0	+4.9	+85	+140	+38	+18	+67	+63	+100	+123	+227

Member of Reserve Champion Sire Group

**113** RKP GL J611-015 325 RK Perry

Black Angus  
 AAA#: 20785679  
 DOB: 03/17/23  
 Tattoo: 325

Deer Valley Growth Fund  
 Vermilion Growth Fund J611  
 Vermilion Evergreen 3133

Bar R Jet Black 5063  
 LB Anita Linda 015  
 N S R Miss Linda 421

Entry Wt	Final Wt
771	1153
ADG	ADG Ratio
3.32	90
WDA	WDA Ratio
3.24	103

BW	205 Day Wt.	205 Day Ratio	365 Day Wt.	365 Day Ratio	TBT Ratio
85	753	105	1214	102	99

CED	BW	WW	YW	SC	MILK	\$M	\$W	\$F	\$B	\$C
+7	+1.3	+84	+137	+60	+30	+58	+84	+113	+167	+275

**116** RKP J280-022 334 RK Perry

Black Angus  
 AAA#: 20784186  
 DOB: 03/22/23  
 Tattoo: 334

Myers Fair-N-Square M39  
 Vermilion Fair N Square J280  
 Vermilion Ettarre 6137

Ellingson Transcend 5212  
 RKP 5212-0213 022  
 Vermilion Lass 0213

Entry Wt	Final Wt
705	1120
ADG	ADG Ratio
3.61	97
WDA	WDA Ratio
3.19	101

BW	205 Day Wt.	205 Day Ratio	365 Day Wt.	365 Day Ratio	TBT Ratio
88	769	99	1210	102	99

CED	BW	WW	YW	SC	MILK	\$M	\$W	\$F	\$B	\$C
+4	+3	+77	+131	+92	+29	+66	+67	+97	+151	+262

**114** RKP J280-027 327 RK Perry

Black Angus  
 AAA#: 20784185  
 DOB: 03/17/23  
 Tattoo: 327

Myers Fair-N-Square M39  
 Vermilion Fair N Square J280  
 Vermilion Ettarre 6137

Vermilion Roughrider  
 RKP D131-87 027  
 RKP 77P-2480 87

Entry Wt	Final Wt
707	1200
ADG	ADG Ratio
4.29	116
WDA	WDA Ratio
3.37	107

BW	205 Day Wt.	205 Day Ratio	365 Day Wt.	365 Day Ratio	TBT Ratio
82	849	109	1293	109	111

CED	BW	WW	YW	SC	MILK	\$M	\$W	\$F	\$B	\$C
-4	+3.9	+85	+150	+63	+27	+53	+67	+123	+178	+284

**117** RKP GL J611-034 338 RK Perry

Black Angus  
 AAA#: 20784189  
 DOB: 03/26/23  
 Tattoo: 338

Deer Valley Growth Fund  
 Vermilion Growth Fund J611  
 Vermilion Evergreen 3133

LB Biff 852  
 LB Trojan Erica 034  
 LB Trojan Erica 863

Entry Wt	Final Wt
747	1170
ADG	ADG Ratio
3.68	99
WDA	WDA Ratio
3.37	99

BW	205 Day Wt.	205 Day Ratio	365 Day Wt.	365 Day Ratio	TBT Ratio
94	784	109	1257	106	105

CED	BW	WW	YW	SC	MILK	\$M	\$W	\$F	\$B	\$C
+3	+4.3	+85	+149	+30	+26	+56	+67	+94	+128	+222

# BLACK ANGUS BULLS

## 118 RKP J611-84 342

RK Perry

Black Angus  
AAA#: 20784183  
DOB: 03/27/23  
Tattoo: 342

Deer Valley Growth Fund  
Vermilion Growth Fund J611  
Vermilion Evergreen 3133

ER Justice N013  
RKP N013-707 84  
Vermilion JL Lass 707

Entry Wt	Final Wt
766	1231
ADG	ADG Ratio
4.04	109
WDA	WDA Ratio
3.56	113

BW	205 Day Wt.	205 Day Ratio	365 Day Wt.	365 Day Ratio	TBT Ratio
94	800	112	1289	108	110

CED	BW	WW	YW	SC	MILK	\$M	\$W	\$F	\$B	\$C
+2	+4.8	+96	+166	+1.19	+23	+53	+67	+114	+142	+237

Dam WR 3@110 YR 2@111. Member of Reserve Champion Sire Group.

## 120 RKP J611-71 350

RK Perry

Black Angus  
AAA#: 20784182  
DOB: 03/31/23  
Tattoo: 350

Deer Valley Growth Fund  
Vermilion Growth Fund J611  
Vermilion Evergreen 3133

Boyd Signature 1014  
RKP 1014-8456 71  
Vermilion Lass 8456

Entry Wt	Final Wt
701	1093
ADG	ADG Ratio
3.41	92
WDA	WDA Ratio
3.20	101

BW	205 Day Wt.	205 Day Ratio	365 Day Wt.	365 Day Ratio	TBT Ratio
90	769	108	1167	98	99

CED	BW	WW	YW	SC	MILK	\$M	\$W	\$F	\$B	\$C
+5	+2.3	+76	+129	+99	+31	+71	+76	+107	+115	+220

## 119 RKP J611-86 349

RK Perry

Black Angus  
AAA#: 20784184  
DOB: 03/31/23  
Tattoo: 349

Deer Valley Growth Fund  
Vermilion Growth Fund J611  
Vermilion Evergreen 3133

Boyd Signature 1014  
RKP 1014-8456 86  
Vermilion Lass 8456

Entry Wt	Final Wt
754	1130
ADG	ADG Ratio
3.27	88
WDA	WDA Ratio
3.30	105

BW	205 Day Wt.	205 Day Ratio	365 Day Wt.	365 Day Ratio	TBT Ratio
88	764	107	1201	101	99

CED	BW	WW	YW	SC	MILK	\$M	\$W	\$F	\$B	\$C
+4	+2	+74	+143	+1.21	+34	+50	+69	+118	+128	+216

## 121 RKP WM 133-A41 L1

RK Perry

Black Angus  
AAA#: 20784181  
DOB: 02/22/23  
Tattoo: L1

Poss Rawhide  
RKP Laramie 133  
Vermilion Lass 0213

AA R Ten X 7008 S A  
FF Henrietta Pride Y14  
FF Henrietta Pride Y14

Entry Wt	Final Wt
814	1339
ADG	ADG Ratio
4.57	123
WDA	WDA Ratio
3.53	112

BW	205 Day Wt.	205 Day Ratio	365 Day Wt.	365 Day Ratio	TBT Ratio
77	733	103	1313	110	112

CED	BW	WW	YW	SC	MILK	\$M	\$W	\$F	\$B	\$C
+5	+1.2	+78	+139	+1.88	+24	+44	+66	+118	+200	+303

Sire was the high selling bull at the 2022 TBT Sale. Dam WR 6@106 YR 5@107.

## 2024 TREASURE BULL TEST



The Jackpot was started several years ago by Russ and Barb Pepper as a little contest where every consignor gets a \$100 bill thrown in the pot. The consignor picks one bull from there consignment list on the day of arrival. The bull they think will gain the best. These bulls are indexed separately from the TBT Index. 1/2 ADG Ratio, 1/4 205 Day Ratio, and 1/4 365 Day Ratio. Winners take all!

- Jackpot Champion ~ Lot 12 ~ A son of Connealy Big Valley from Willekes Angus with a 112 Index
- Reserve Champion ~ Lot 22 ~ A Ellingson Deep River son from Marshall Willekes Angus with a 111 Index
- 3rd Place Champion ~ Lot 64 from Lewis Land & Livestock with a son of Deer Valley Optimum 9246 with a 110 Index

# FROM BREED LEADING SIRES

## 122 RKP 133-11 L7

RK Perry

Black Angus  
AAA#: 20784194  
DOB: 03/07/23  
Tattoo: L7

Poss Rawhide  
RKP Laramie 133  
Vermilion Lass 0213

Diablo Deluxe 1104  
RKP 1104-F66 11  
FF Henrietta Pride F66

Entry Wt	Final Wt
799	1269
ADG	ADG Ratio
4.09	110
WDA	WDA Ratio
3.47	110



ANGUS GS  
Powered by Neogen Genomics

BW	205 Day Wt.	205 Day Ratio	365 Day Wt.	365 Day Ratio	TBT Ratio
79	803	113	1328	112	112

CED	BW	WW	YW	SC	MILK	\$M	\$W	\$F	\$B	\$C
+1	+2.6	+90	+158	+94	+32	+46	+80	+123	+191	+294

Sire was the high selling bull at the 2022 TBT Sale.

## 128 RKP J280-038 339

RK Perry

Black Angus  
AAA#: 20784187  
DOB: 03/27/23  
Tattoo: 339

Myers Fair-N-Square M39  
Vermilion Fair N Square J280  
Vermilion Ettarre 6137

Ellingson Transcend 5212  
RKP 5212-0213 038  
Vermilion Lass 0213



ANGUS GS  
Powered by Neogen Genomics

BW	205 Day Wt.	205 Day Ratio	365 Day Wt.	365 Day Ratio	TBT Ratio
95	745	105	1240	104	108

CED	BW	WW	YW	SC	MILK	\$M	\$W	\$F	\$B	\$C
-7	+6.6	+89	+149	+96	+21	+44	+56	+111	+172	+267

Grand Dam is the mother of many high sellers at TBT. Dam WR 2@105 YR 1@105.

## 123 RKP WM 1832-601 L12

RK Perry

Black Angus  
AAA#: 20826140  
DOB: 03/11/23  
Tattoo: L12

S A V America 8018  
S A V Glory Days 1832  
S A V Madame Pride 3145

Koupals B&B Extra 0011  
RKP 0011-325 601

Merle of Braun Creek 325

Entry Wt	Final Wt
715	1150
ADG	ADG Ratio
3.78	102
WDA	WDA Ratio
3.18	101



ANGUS GS  
Powered by Neogen Genomics

BW	205 Day Wt.	205 Day Ratio	365 Day Wt.	365 Day Ratio	TBT Ratio
80	688	100	1153	97	100

CED	BW	WW	YW	SC	MILK	\$M	\$W	\$F	\$B	\$C
-3	+4.7	+64	+109	+1.31	+23	+41	+47	+83	+114	+189

## 134 JSR Payweight 3610

Jacobsen Ranch

Black Angus  
AAA#: 20777541  
DOB: 03/03/23  
Tattoo: 3610

FF Conclusion F83  
FF Conclusion JF H86  
FF Shoshone JF D149

Musgrave Identity 1223-1136

FF Hilda D177

FF Hilda Z21



ANGUS GS  
Powered by Neogen Genomics

BW	205 Day Wt.	205 Day Ratio	365 Day Wt.	365 Day Ratio	TBT Ratio
80	765	114	1125	95	100

CED	BW	WW	YW	SC	MILK	\$M	\$W	\$F	\$B	\$C
+5	+1.9	+69	+121	+1.85	+35	+55	+70	+32	+148	+247

## 126 RKP 1832-82 313

RK Perry

Black Angus  
AAA#: 20826138  
DOB: 03/09/23  
Tattoo: 313

S A V America 8018  
S A V Glory Days 1832  
S A V Madame Pride 3145

TC Total 410  
RKP 410-2480 82

Vermilion Lass 2480

Entry Wt	Final Wt
736	1180
ADG	ADG Ratio
3.86	104
WDA	WDA Ratio
3.24	103



ANGUS GS  
Powered by Neogen Genomics

BW	205 Day Wt.	205 Day Ratio	365 Day Wt.	365 Day Ratio	TBT Ratio
93	682	96	1175	99	100

CED	BW	WW	YW	SC	MILK	\$M	\$W	\$F	\$B	\$C
-5	+4.1	+70	+125	+1.01	+20	+40	+48	+113	+166	+255



S A V Glory Days 1832 - Sire of Lots 123 & 126

## 136 FF Spur L25 [OHP]

### Fleisch Angus

Black Angus

AAA#: 20810038

DOB: 01/20/23

Tattoo: L25

Connealy Spur  
**WILL Spur G35**  
 Pine Coulee Pride of Lee W25  
 Coleman Knight 209  
**Willekes Bonny D156**  
 Pine Coulee Bonny B78

Entry Wt	Final Wt	
781	1200	
ADG	ADG Ratio	
3.64	98	
WDA	WDA Ratio	
2.91	92	
365 Day Wt.	365 Day Ratio	TBT Ratio
89	672	99



CED	BW	WW	YW	SC	MILK	\$M	\$W	\$F	\$B	\$C
-5	+4.6	+74	+124	+1.95	+12	+66	+52	+75	+99	+194

Powerfully designed bull, sired by the 2020 Treasure Test Champion Bull, G35. Lots of body and maternal character in this bull.

## 137 FF Profound L56

### Fleisch Angus

Black Angus

AAA#: 20810036

DOB: 01/28/23

Tattoo: L56

S Powerpoint WS 5503  
**Ellingson Profound 8155**  
 EA Rosetta 6157  
 FF North Wind B151  
**Willekes Dateline 60D**  
 Willekes Dateline 60L

Entry Wt	Final Wt	
741	1200	
ADG	ADG Ratio	
3.99	108	
WDA	WDA Ratio	
2.97	97	
365 Day Wt.	365 Day Ratio	TBT Ratio
83	662	98



CED	BW	WW	YW	SC	MILK	\$M	\$W	\$F	\$B	\$C
+7	+3.8	+80	+130	+1.57	+17	+82	+63	+101	+127	+247

Sired by the popular Ellingson Profound. Moderate framed bull with feet EPD's in the top 3 and 4% of the breed. Also top 10% breed for \$Maternal.



WILL Spur G35 - Sire of Lot 136

## American Angus Association Selection Tools

**Expected Progeny Difference (EPD)**, is the prediction of how future progeny of each animal are expected to perform relative to the progeny of other animals listed in the database EPDs are expressed in units of measure for the trait, plus or minus. Interim EPDs may appear on young animals when their performance has yet to be incorporated into the American Angus Association National Cattle Evaluation (NCE) procedures. This EPD will be preceded by an "I", and may or may not include the animal's own performance record for a particular trait, depending on its availability, appropriate contemporary grouping, or data edits needed for NCE.

**Accuracy (ACC)**, is the reliability that can be placed on the EPD. An accuracy of close to 1.0 indicates higher reliability. Accuracy is impacted by the number of progeny and ancestral records included in the analysis.

**Calving Ease Direct (CED)**, is expressed as a difference in percentage of unassisted births, with a higher value indicating greater calving ease in first-calf heifers. It predicts the average difference in ease with which a sire's calves will be born when he is bred to first-calf heifers.

**Birth Weight (BW)**, expressed in pounds, is a predictor of a sire's ability to transmit birth weight to his progeny compared to that of other sires.

**Weaning Weight (WW)**, expressed in pounds, is a predictor of a sire's ability to transmit weaning growth to his progeny compared to that of other sires.

**Residual Average Daily Gain (RADG)**, feed efficiency expressed in pounds per day, is a predictor of a sire's genetic ability for postweaning gain in future progeny compared to that of other sires, given a constant amount of feed consumed.

**Yearling Weight (YW)**, expressed in pounds, is a predictor of a sire's ability to transmit yearling growth to his progeny compared to that of other sires.

**Yearling Height (YH)**, is a predictor of a sire's ability to transmit yearling height, expressed in inches, compared to the that of other sires.

**Scrotal Circumference (SC)**, expressed in centimeters, is a predictor of the difference in transmitting ability for scrotal size compared to that of other sires.

**Docility (DOC)**, is expressed as a difference in yearling cattle temperament, with a higher value indicating more favorable docility in a sire's offspring compared to another sire.

**MATERNAL**

**Heifer Pregnancy (HP)**, is a selection tool to increase the probability or chance of a sire's daughters becoming pregnant as first-calf heifers during a normal breeding season. A higher EPD is the more favorable direction, and the EPD is reported in percentage units.

**Calving Ease Maternal (CEM)**, is expressed as a difference in percentage of unassisted births, with a higher value indicating greater calving ease in first-calf daughters. It predicts the average ease with which a sire's daughters will calve as first-calf heifers when compared to daughters of other sires.

**Maternal Milk (Milk)**, is a predictor of a sire's genetic merit for milk and mothering ability in his daughters compared to daughters of other sires. In other words, it is that part of a calf's weaning weight attributed to milk and mothering ability.

**Mature Weight (MW)**, expressed in pounds, is a predictor of the difference in mature weight of daughters of a sire compared to the daughters of other sires.

**Mature Height (MH)**, expressed in inches, is a predictor of the difference in mature height of a sire's daughters compared to daughters of other sires.

**Claw Set (Claw)**, is expressed in units of claw-set score. A lower EPD is more favorable, indicating a sire will produce progeny with more ideal claw set, which is toes that are symmetrical, even and appropriately spaced.

**Foot Angle (Angle)**, is expressed in units of foot-angle score. A lower EPD is more favorable, indicating a sire will produce progeny with more ideal foot angle, which is a 45-degree angle at the pastern joint with appropriate toe length and heel depth.

**CARCASS**

The genetic evaluation produces a single set of EPDs for carcass traits where the units of measure are in trait format and analyzed on an age-constant basis.

**Carcass Weight (CW)**, expressed in pounds, is a predictor of the differences in hot carcass weight of a sire's progeny compared to progeny of other sires.

**Marbling (Marb)**, is expressed as a fraction of the difference in USDA marbling score of a sire's progeny compared to progeny of other sires.

**Ribeye Area (RE)**, expressed in square inches, is a predictor of the difference in ribeye area of a sire's progeny compared to progeny of other sires.

**Fat Thickness (Fat)**, expressed in inches, is a predictor of the differences in external fat thickness at the 12th rib (as measured between the 12th and 13th ribs) of a sire's progeny compared to progeny of other sires.

**\$VALUE INDEXES**

**\$Value Indexes**, reported in dollars per head, are multi-trait selection indexes where a higher value suggests more profit. The \$Value is an estimate of how future progeny of each sire are expected to perform, on average, compared to progeny of other sires if sires were randomly mated to cows and if calves were exposed to the same environment.

**Maternal Weaned Calf Value (\$M)**, expressed in dollars per head, predicts profitability differences in progeny due to genetics from conception to weaning. Increased selection pressure on \$M aims to decrease overall mature cow size and improve foot structure and fertility while maintaining weaning weights consistent with today's production.

**Weaned Calf Value (\$W)**, expressed in dollars per head, provides the expected difference in future progeny preweaning performance from birth to weaning. Increased selection pressure on \$W increases weaning and maternal milk traits while increasing mature cow size.

**Cow Energy Value (\$EN)**, expressed in dollars savings per cow per year, assesses differences in cow energy requirements as an expected dollar savings difference in daughters of sires. A larger value is more favorable when comparing two animals. Components for computing \$EN savings difference include lactation energy requirements and energy costs associated with differences in mature cow size.

**Feedlot Value (\$F)**, expressed in dollars per head, is the expected average difference in future progeny performance for postweaning merit compared to progeny of other sires. The underlying objective assumes commercial producers will retain ownership of cattle through the feedlot phase and sell feed cattle on a carcass weight basis with no considerations of premiums or discounts for quality and yield grade.

**Grid Value (\$G)**, expressed in dollars per carcass, is the expected average difference in future progeny performance for carcass grid merit, including quality and yield grade attributes, compared to progeny of other sires.

**Beef Value (\$B)**, expressed in dollars per carcass, represents the expected average differences in the progeny postweaning performance and carcass value compared to progeny of other sires. This index assumes commercial producers wean all male and female progeny, retain ownership of these animals through the feedlot phase, and market these animals on a quality-based carcass grid.