

9th Annual
Production
Sale



Monday • **APRIL 3, 2017** • 1:00 P.M.
Milk River Pavilion • Hwy 2 East, Malta, MT

All bulls have been
i50K tested!



View catalog & video at
Northern Livestock Video
www.rmathfarms.com
www.billpelton.com



9th Annual Production Sale

Monday • **APRIL 3, 2017** • 1:00 P.M.
Lunch at 12:00 • Milk River Pavilion • Hwy 2 East, Malta, MT

Selling **70** Yearling Angus Bulls

Also selling short term Cow/Calf pairs
and **80** Angus Replacement Heifers

11096 N Forks Rd • Whitewater, MT 59544
Bob & Rena : 406-674-5562 • 406-672-2323
rmathfarms@yahoo.com
Cody: 406-674-5489
Kevin: 406-390-6633



Welcome to our 9th annual Angus production sale!

What a summer! It rained and rained, then rained some more. A fall snowstorm, at weaning time, forced us to keep the calves on the cows until Oct. 25th, waiting for the corral to dry up. No dust this year...just mud.

The bulls have done real well gaining around 4.26 lbs. per day. We appreciate the job that the crew at Hould Feedlot has done with our bulls. Keeping them on dry ground, this year, has been a real challenge for them. The pens got pretty muddy, again, the middle of February, but we got through it without any major problems, except that the bulls were a little dirty for picture day.

We have two new sire groups represented in this years' sale. Apex Duty Free 283 a son of RB Active Duty, and SAV Cowboy 4874 a son of Connealy Consensus. Cowboy is a big ribeye high marbling bull with a Net Worth mama. We have lots of half-brothers from both bulls.

All bulls were fertility tested and scrotal measured by Roger Baxter DVM. The ultrasound was done by Sonia Gregory. They have been i50K tested, vaccinated, had their booster for foot rot, and are under a complete health program. We will be bringing them in to the pavilion on the morning of the sale and then taking them back to the feedlot afterwards. Deliveries will start the next week.

Once again, we will be offering to pay half of the cost of insurance. Tom Holland, from PayneWest will be at the sale on sale day to help you with your mortality insurance needs.

As always, we hope you can join us Monday, April 3rd for lunch, to visit with friends, and to view the bulls starting at 11 a.m. Sale will begin at 1 p.m. with our favorite auctioneer, Kyle Shobe, at the mic!

We hope to see you there!

The Maths'



Like Us!

Please bring this catalog on sale day.

Auctioneer

Kyle Shobe

Short Term Cow/Calf pairs

Also selling 40 broken mouth cows. These cows are mostly 11 and 12 years old. Some are registered. Some will be calved out and some to calve after sale day. They will either be sold as pairs or as bred cows. Number of each will be announced on sale day. All will calve by May 15.

50 No Brand Commercial Heifers

An nice group of sharp looking heifers from our raised commercial cows of assorted ages, many purebred. Mothers are well mannered and great mother cows. No replacements were kept out of this bunch and we're selling the top females here. They will make an excellent set of momma cows for years to come. All sired by our bulls.

30 One Brand Fancy Commercial Heifers

Another great group of attractive and feminine heifer calves. They are all purebred, and many are calves from registered cows. Some have Apex roots as well as many of our own. They are all well mannered, great mothers, and excellent cows. All sired by Math bulls, these girls will make perfect mother cows.

Online Video

View video of the bulls at www.billpelton.com or view video and bid online with Northern Livestock Video Auction.

Sale Order

Sale order and ultrasound data will be available on sale day.

Performance Data

Bulls come from a BVD tested free herd. They are i5oK tested, fertility tested, and guaranteed.

Calving Ease Ratings – CE

- ★★★★ - Excellent calving ease, use on first calf heifers.
- ★★★ - Superior CE works well with most heifers.
- ★★ - Moderate CE, recommended for use mostly on cows.
- ★ - Recommended for cows only.

Terms & Conditions

Settlement must be made at time of sale unless prior arrangements have been made. Announcements from the auction block take precedence over the catalog.

Insurance

Mortality and Loss of Use Insurance is available through PayneWest Insurance. R Math Farms is offering to pay ½ the cost of a full year policy, with the buyer paying the other ½. Request for insurance must be made on sale day to be eligible.

Volume Discount

We are offering a discount to our volume buyers. Purchase 4 bulls for a 4% discount. Purchase 5 bulls for a 5% discount, etc. We will offer a maximum discount of 10% for buyers purchasing 10 or more bulls.

Delivery

Free delivery within MT and out of state at cost.

Retained Interest

R Math Farms is retaining 1/3 semen revenue-sharing interest in each individual bull in the sale, unless otherwise announced from the block. Natural use and salvage value belong to the buyer.

Liability

All persons attending this sale do so at their own risk. R Math Farms and sale staff assume no liability for property loss or any accidents the may occur.

Absentee Bidding

Buyers unable to attend the sale may also contact any of the following:

Kyle Shobe – 406-366-0472

Bob Math – 406-672-2323, 406-674-5562

Cody Math – 406-671-1949

Kevin Math – 406-390-6633

Jeff Hould – 406-390-1116

Bill Pelton – 406-671-5100

We will also have conference call service available through Bill Pelton Livestock.





Northern Livestock Video Auction

If you are unable to attend the R Math Farms Sale, it will be broadcast live at www.cattleUSA.com. Northern Livestock Video Auction will be carrying the sale live on the internet at www.cattleUSA.com. You need to contact Northern Livestock Video at

1-866-616-5035 to preregister. You can then bid live on the phone at 406-245-0889 through Northern Livestock during the auction or via the internet on www.cattleusa.com.

Pre-register and for Additional Information Call: Bob Math at 406-672-2323 or 406-674-5562, or Northern Livestock Video at 866-616-5035.

To view online catalog and pre-sale video of the bulls, go to www.northernlivestockvideo.com and click on the R Math Farms Sale.

Sale Day Conference Call



Our goal is to have you in the seats but if you can't make it on sale day, we're fixin' to get you "on the line!"

Easy as 1-2-3

1. **In Advance-** you call the breeder to pre-register your buyer number
2. **Prior To-** the sale you will receive an email or call from the breeder with the toll free conference call number, pin number, and instructions
3. **Sale Day-** at or during the sale time, you call the toll free number and enter your pin to be placed on the call.



Pelton Livestock
Marketing & Consulting

www.billpelton.com

bill@billpelton.com | 406-671-5100



OFFERING
AMERICAN LIVE STOCK
INSURANCE SERVICES



BULL MORTALITY *and* LOSS OF USE INSURANCE COVERAGE



Protect Your INVESTMENT

PayneWest
INSURANCE

Tom Holland
406.683.6882
tholland@paynewest.com

Coverage Option 1: Bull Mortality and Loss of Use Coverage

Values: Bulls valued up to \$25,000, not to exceed purchase price.
Term: One Year Policy Term
Premium: 10% of the Purchase Price Premium Fully Earned \$150 Minimum Premium Per Animal
Testing: All bulls must be tested, certified and listed in an official herd sale catalog.

COVERAGES

Full Mortality:

100% of the value of the bull in the event of death or life-threatening injury.

Loss of Use:

80% of the value of the bull, less salvage value, of in the event of Loss of Use from an accident, illness, or disease that can clearly be diagnosed or identified to have occurred on a specified date.

25% of the value of the bull in the event of Loss of Use from an accident, illness, or disease if there is a diagnosis consistent with an accident, illness, or disease but no real evidence that provides clear diagnosis or identification.

Coverage Option 2: Bull Full Mortality Coverage

Values: Bulls valued up to \$25,000, not to exceed purchase price.
Term: Renewable One-Year Policy Term for Bulls 6 Month - 7 Years of age.
Premium: 5.5% of the Purchase Price Premium Fully Earned \$150 Minimum Premium Per Animal
Testing: Veterinarian examination and signed statement of health required for all bulls for which coverage is requested.

COVERAGE

Full Mortality:

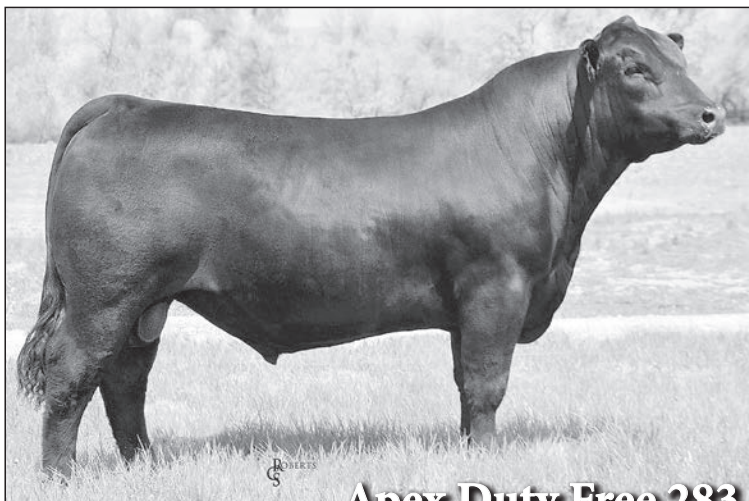
100% of the value of the bull in the event of death or life-threatening injury.

Coverage Underwritten By:
Aegis Security Insurance Company
PO Box 3153, Harrisburg, PA 17105-3153
AM BEST RATING: A VI

Reference Sires



S A V Cowboy 4874



Apex Duty Free 283



H A R B Idol 112

Reference Sire

S A V Cowboy 4874

Bull Reg. #+17923432 2/2/14
 CONNEALY CONSENSUS # KMK ALLIANCE 6595 187 #
 CONNEALY CONSENSUS 7229 # BLINDA OF CONANGA 004
 BLUE LILLY OF CONANGA 16 WOODHILL ADMIRAL 77K #
 BLUE CASH OF CONANGA 6020
 S A V NET WORTH 4200 # S A V 8180 TRAVELER 004 #
 S A V EMBLYNETTE 7545 S A V MAY 2410
 S A V EMBLYNETTE 7260 # N BAR EMULATION EXT #
 S A V EMBLYNETTE APRIL 1509 #

CED	BW	WW	YW	Milk	
+1	+3.1	+63	+104	+27	
Marb	REA	Fat	\$W	\$F	\$B
+1.03	+0.83	+1.01	68.19	65.45	132.35

We brought this bull back from North Dakota with our pockets a little lighter, but the price tag was worth it! This bull packs the key ingredients of performance, maternal, and carcass merit to work in any facet of the industry. Dam's production: 4 NR 107, and the granddam: 9 NR 104, and the rest of the pedigree is loaded with Pathfinder females. Individual performance: BW 78, 205-wt 985 lbs., 365-wt 1,579 lbs. He scanned an 18.6 ribeye! He offers incredible growth and is designed for cattlemen who demand thick, deep, and easy fleshing cattle that perform in any environment. We're very excited about this Consensus 7229 son, and are happy to offer several bulls this year, The Cowboy Kind!

Sire of Lots 5, 15, 25, 31, 47, 50, 58, 61, 66, 74

Reference Sire

Apex Duty Free 283

Bull Reg. 17594409 1/17/2013
 LCC NEW STANDARD # BON VIEW NEW DESIGN 1407 #
 R B ACTIVE DUTY 010 LCC SUNSET K3118
 B A LADY 6807 305 VERMILION DATELINE 7078 #
 G D LADY HI FLYER 302 #
 WMR HERO 829 SRA 2418 OF RR 303
 W M R PRIDE 151 #
 APEXETTE RACHEL 1098 SITZ TRADITION 8135 #
 APEXETTE RACHEL 8844 APEXETTE RACHEL 8058

CED	BW	WW	YW	Milk	
+3	+3.6	+63	+117	+28	
Marb	REA	Fat	\$W	\$F	\$B
+0.08	+0.06	+0.003	57.52	89.77	93.51

283 was the high selling bull in the 2014 Apex production sale. A high performance sire that exhibits length, eye appeal, large scrotal circumference and top bull test stats. Six Pathfinders in Duty's genes. His calves are framed long and deep, and hit the ground shiny black! His progeny should produce excellent females and will add performance to any herd.

Sire of Lots 3, 7, 14, 20, 21, 24, 27, 28, 30, 32, 43, 44, 46, 49, 62, 69, 70, 80

Reference Sire

H A R B Idol 112

Bull Reg. 17398288 2/21/12
 S A V FINAL ANSWER 0035 # SITZ TRAVELER 8180 #
 S A V EMULOUS 8145
 H A R B ICON 019 H A R B WINDY 702 JH #
 H A R B BELLE NELLIE 702-707 H A R B BELLE L NELLIE 236
 H A R B WINDY 702 JH # A A R REALLY WINDY 1205 #
 H A R B LADY CAMILLIA 802 H A R B BLACK LADY 073 JH #
 H A R B LADY CAMILLIA 649 H A R B DATELINE 353
 H A R B LADY K C G29

CED	BW	WW	YW	Milk	
+2	+2.8	+65	+107	+29	
Marb	REA	Fat	\$W	\$F	\$B
+0.55	+0.47	+1.146	69.90	61.91	90.75

Idol 112 was the top selling bull at the 2013 Midland Bull Test. He comes from excellent pedigree that has been doing well at Midland for years. Idol was a valedictorian in his class for pounds at weaning and yearling time, and posted a 3.98 WDA. This bull is the real deal, and his sons are no different, HARB having just sold one in 2016 at Midland for \$36,000! Idol is a powerful herd sire, deep muscled and long bodied, with great feet and gentle disposition. He's also one of easiest handling bulls we've had. We didn't have the AI catch we would have liked this year, but the bull we do have is our Lot 1.

Sire of Lot 1

Reference Sires



S A V Renown 3439

Reference Sire

S A V Renown 3439

Bull Reg. +17633839 1/7/13
 R R RITO 707 # RITO N BAR
 RITO 707 OF IDEAL 3407 7075 ERISKAY OF ROLLIN ROCK 3
 IDEAL 3407 OF 1418 076 IDEAL 1418 OF 8103 4286 #
 IDEAL 076 OF 692 8375
 S A V 8180 TRAVELER 004 # SITZ TRAVELER 8180 #
 S A V BLACKCAP MAY 4136 BOYD FOREVER LADY 8003
 S A V MAY 2397 # S A F 598 BANDO 5175 #
 S A V MAY 7238

CED	BW	WW	YW	Milk	
+2	+2.4	+73	+121	+36	
Marb	REA	Fat	\$W	\$F	\$B
+1.18	+0.94	+0.030	84.38	94.46	159.21

Renown is the result of the same proven and predictable mating that created Resource. He is backed by the Blackcap May cow family that leads the breed in producing A.I. sires. His progeny combine modest birth weights with phenomenal phenotypic quality, breed-leading performance, superior structure and great disposition. Truly in a league of their own.

Sire of Lots 2 & 45



Shipwheel-Upward 2517

Reference Sire

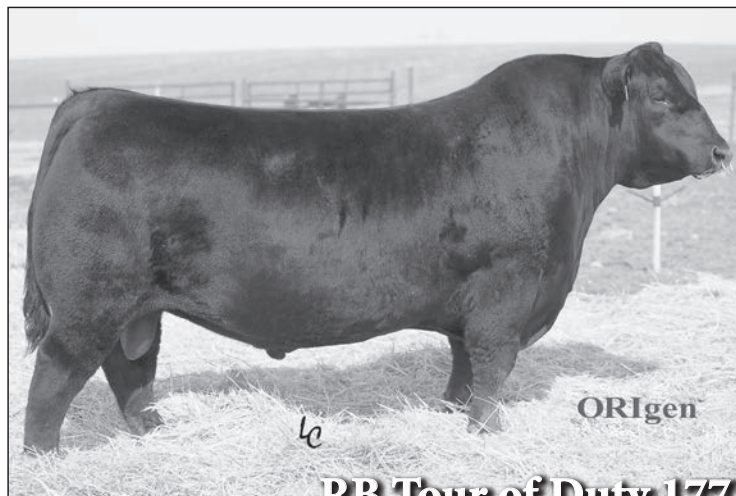
Shipwheel Upward 2517

Bull Reg. 17603068 5/29/12
 CONNEALY ONWARD # CONNEALY LEAD ON #
 SITZ UPWARD 307R ALTUNE OF CONANGA 6104
 SITZ HENRIETTA PRIDE 81M SITZ VALUE 7097 #
 SITZ HENRIETTA PRIDE 1370
 HOLMAN 208 P44 BON VIEW NEW DESIGN 208 #
 SHIPWHEEL ENCHANTRESS 8184 MISS K R TOPCUT 180F
 DR J MS APEX 053 L35 APEX FOCUS 053
 DR J MISS 34 TIME D54

CED	BW	WW	YW	Milk	
+10	+1.0	+72	+123	+34	
Marb	REA	Fat	\$W	\$F	\$B
+0.61	+0.40	+0.083	83.68	84.62	130.08

Upward was a standout herd sire at the 2012 Shipwheel sale. Since he's been on our ranch, he's lived up to the reputation, having sired our top selling bull in 2016. Upward has great length, depth, and eye appeal with a disposition to match. His calves have been big, long, and powerful. He is a breeding machine! His sons should work great on heifers.

Sire of Lots 6, 17, 53, 55, 67



RB Tour of Duty 177

Reference Sire

RB Tour Of Duty 177

Bull Reg. +16984170 1/24/11
 CONNEALY ONWARD # CONNEALY LEAD ON #
 WERNER WAR PARTY 2417 # ALTUNE OF CONANGA 6104
 BAAR USA LADY JAYE 489 B A R EXT TRAVELER 205 #
 CRA LADY JAYE 608 498 S EASY
 VERMILION DATELINE 7078 # CONNEALY DATELINE #
 VERMILION BLACKBIRD 5044 #
 B A LADY 6807 305 HOFF HI FLYER S C 7134 #
 G D LADY HI FLYER 302 LADY VALEDICTORIAN 3 S A F

CED	BW	WW	YW	Milk	
+7	+2.5	+66	+114	+25	
Marb	REA	Fat	\$W	\$F	\$B
+0.53	+1.00	-0.082	59.92	82.20	179.09

Tour of Duty is the kind of bull that catches your eye every time. His tremendous length of body and attractive phenotype are just two bonuses that go with his great performance profile. If you want proven growth without excess birth, Tour of Duty has it. If you want breed-leading muscle, maternal, and docility, Tour of Duty has it. Use him to add performance, powerful phenotype and the influence of one of the breed's top cow families.

Sire of Lots 41, 48, 68

Reference Sires



Basin Payweight 107S

Reference Sire

Basin Payweight 107S

Bull Reg. #+15332022 2/1/06
 VERMILION DATELINE 7078 #
 VERMILION PAYWEIGHT J847
 VERMILION LASS 7969
 C A FUTURE DIRECTION 5321 #
 BASIN LUCY 3829
 BASIN LUCY 178E

CONNEALY DATELINE #
 VERMILION BLACKBIRD 5044 #
 TOP SECRET 9757 E A R
 VERMILION 155 LASS 2046
 G A R PRECISION 1680 #
 C A MISS POWER FIX 308
 BASIN MAX 602C #
 BASIN LUCY 855A #

CED	BW	WW	YW	Milk	
-5	+3.0	+74	+121	+21	
Marb	REA	Fat	\$W	\$F	\$B
+0.44	+1.31	-0.02	60.90	89.96	190.81

Basin Payweight 107S is among the elite sires of the breed for WW, YW, CW, REA and Docility, ranking near the top of Sire EPD sorts for all of these traits. No other sire comes close to his proven strength in these five important traits. Use Basin Payweight 107S to add length of body and uniformity to your calf crop.
Sire of Lot 23



S-A-V Harvester 0338

Reference Sire

S A V Harvester 0338

Bull Reg. 16687737 4/18/10
 CAR DUKE 104 #
 S A V HERITAGE 6295 #
 S A V BLACKCAP MAY 4136
 S A V NET WORTH 4200 #
 S A V EMBLYNETTE 7749
 SAV EMBLYNETTE DIAMOND 6377 #

CAR TRACKER 904 #
 C A R MISS RAINDANCER 421 #
 S A V 8180 TRAVELER 004 #
 S A V MAY 2397 #
 S A V 8180 TRAVELER 004 #
 S A V MAY 2410
 PRO TREND 9042 L W #
 S A V SKY DIAMOND 2582

CED	BW	WW	YW	Milk	
-11	+6.5	+69	+125	+29	
Marb	REA	Fat	\$W	\$F	\$B
+0.52	+0.67	+1.02	54.50	102.53	153.12

Harvester progeny are stamped with breed character and built right from the ground up. Perfect in their structure, with massive thickness, volume, and muscle shape while his daughters are feminine with beautiful udders and added dimension to make real brood cows.

Sire of Lots 9, 65, 75

Reference Sire

BDAR Fat Cat B400

Bull Reg. 18083484 3/29/14
 CONNEALY CAPITALIST 028
 BDAR FAT CAT Z077
 SYDGEN CAROL ANN 7047
 SYDGEN FORWARD 9130
 BDAR ZARA 153Y
 BDAR ZARA 744T

S A V FINAL ANSWER 0035 #
 PRIDES PITA OF CONANGA 8821
 SYDGEN FOCUS 2088
 SYDGEN CAROL ANN 5111
 CONNEALY FORWARD #
 SYDGEN JANNET 6978 #
 VERMILION DANNY BOY R231
 B D A R DESTINY LASS 509R

CED	BW	WW	YW	Milk	
+7	+5	+65	+106	+36	
Marb	REA	Fat	\$W	\$F	\$B
+0.53	+0.73	+0.087	81.25	66.81	126.11

Fat Cat B400 is a Connealy Capitalist 028 son that we purchased from Big Dry Angus Ranch for \$25,000. With a name like that, we figured we couldn't go wrong! He is a calving ease bull with strong numbers. We used him on 1st calf heifers and AI'd him to a few cows. Calves came in the 80 lb. range and grew like the name insists. We got a lot of heifer calves this year, but the bull in the sale is a definite powerful son from him. We are excited to get his new crop of calves in 2017.

Sire of Lot 34

Reference Sire

Apex Black Leather 718

Bull Reg. 16244420 1/26/08
 MYTTY IN FOCUS #
 APEX FOCUS 053
 APEXETTE DARKLADY 1002
 APEX 450 WIDE TRACK 052
 APEXETTE WINGINA 4062
 APEXETTE WINGINA 1781

S A F FOCUS OF E R #
 MYTTY COUNTESS 906
 HOFF HEAD OF THE CLASS SC534 #
 APEXETTE 205 LADY 9071 #
 APEX WIDE TRACK 450
 APEX ETTE 149 24E 0098 #
 WRAF ILLINI TRAVELER
 APEXETTE WINGINA 8024 #

CED	BW	WW	YW	Milk	
+9	-2.8	+53	+91	+33	
Marb	REA	Fat	\$W	\$F	\$B
+0.32	+0.46	+0.010	62.08	50.97	140.77

Black Leather was a favorite bull on our ranch. He died 2 summers ago. He had a great disposition and his daughters are some of our best cows. They will be in our herd for many years to come. He was the REAL DEAL! We have a couple sons to offer this year, and they are excellent.

Sire of Lots 19 & 64

Reference Sires



Reference Sire *Connealy Mentor 4660 442B*

Bull Reg. +16763634 2/9/10
 G A R RETAIL PRODUCT # G A R PRECISION 1680 #
 CONNEALY MENTOR 7374 # G A R EXT 4927
 EXECUTA OF CONANGA 939 # JAUER 353 TRAVELER 589 27 #
 EXEC OF CONANGA 6940 #
 CONNEALY LEAD ON # CONNEALY LEADTIME #
 JAZE OF CONANGA 234 ELIGENCE PLUS OF CONANGA
 JAYCEE OF CONANGA 233 ROCKN D AMBUSH 1531 #
 JOY OF CONANGA 6230 #

CED	BW	WW	YW	Milk	
+4	+1.7	+61	+110	+27	
Marb	REA	Fat	\$W	\$F	\$B
+0.84	+1.25	+0.058	65.91	67.26	147.13

Our pic from the Connealy sale in 2011. A full brother to Connealy Counselor, Mentor is a high marbling, ribeye bull out of a Lead On daughter from their ET program.

Sire of Lots 4, 12, 42

Reference Sire *Peak Dot Eliminator 719Z*

Bull Reg. +17508711 3/19/12
 RITO 707 OF IDEAL 3407 7075 R R RITO 707 #
 S A V ELIMINATOR 9105 IDEAL 3407 OF 1418 076
 S A V ABIGALE 5646 S A F 598 BANDO 5175 #
 S A V ABIGALE 6062
 S A V 004 PREDOMINANT 4438 # S A V 8180 TRAVELER 004 #
 LADY OF PEAK DOT 986U S A V EMBLYNETTE 1182
 LADY OF PEAK DOT 782L DOUBLE AA RITO 287'97
 LADY OF PEAK DOT 575E

CED	BW	WW	YW	Milk	
+9	+1.9	+48	+79	+25	
Marb	REA	Fat	\$W	\$F	\$B
+0.39	-0.08	+0.067	52.76	28.77	68.60

Sire of Lot 8.

Half-brothers, the Eliminator bulls were so impressive that we bought two! We wanted as many calves as we could get out of them. They come from the Peak Dot embryo program cows.

Reference Sire *Peak Dot Eliminator 756Z*

Bull Reg. +17508701 3/11/12
 RITO 707 OF IDEAL 3407 7075 R R RITO 707 #
 S A V ELIMINATOR 9105 IDEAL 3407 OF 1418 076
 S A V ABIGALE 5646 S A F 598 BANDO 5175 #
 S A V ABIGALE 6062
 MOHNEN DYNAMITE 1356 # BALDRIDGE KABOOM K243 KCF #
 BARDOLIA OF PEAK DOT 945U MOHNEN JILT 910 #
 BARDOLIA OF PEAK DOT 585X HF MOST WANTED 46H
 BARDOLIA OF PEAK DOT 963H

CED	BW	WW	YW	Milk	
-2	+3.3	+61	+112	+27	
Marb	REA	Fat	\$W	\$F	\$B
+0.03	+0.59	+0.019	60.13	70.62	119.14

Sire of Lot 11, 52, 59, 76.

Reference Sire *Apex Timber Line 4302*

Bull Reg. 17444416 2/3/12
 H A R B WINDY 702 JH # A A R REALLY WINDY 1205 #
 APEX WINDY 078 # H A R B BLACK LADY 073 JH #
 APEXETTE LUCY 6037 APEX MTN FRONT 044
 APEXETTE LUCY 1064
 APEX LIMITED EDITION 942 HOFF LIMITED EDITION S C 594 #
 APEXETTE KINCHTRY 5039 # APEXETTE 880B SASSY 7053 #
 APEXETTE KINCHTRY 1078 TC TRADEMARK 987 #
 APEXETTE KINCHTRY 6087

CED	BW	WW	YW	Milk	
+4	+1.8	+49	+86	+26	
Marb	REA	Fat	\$W	\$F	\$B
+0.52	+0.22	+0.023	44.42	35.62	83.23

Our pic at the 2013 Apex sale. Comes from a good cow family. A super long and thick built, big scrotal bull.

Sire of Lot 13

Reference Sire *RMF Timeless 48a*

Bull Reg. 17753362 5/10/13
 WMR TIMELESS 458 # LEACHMAN RIGHT TIME 338-5605 #
 WMR TIMELESS 20 WMR BLACKCAP 521
 WMR EILEEN 862 SRA 2418 OF RR 303
 WMR EILEEN 725
 SITZ NEW DESIGN 458N # BON VIEW NEW DESIGN 1407 #
 RMF AALEEN 0404 SITZ ELLUNAS ELITE 3308
 R M F AALEEN 404 A A R REALLY WINDY 10 #
 N P AALEEN 813

CED	BW	WW	YW	Milk	
+10	+0.5	+55	+96	+26	
Marb	REA	Fat	\$W	\$F	\$B
+0.39	+0.21	+0.050	68.12	47.48	86.94

A four star calving ease bull we use annually to clean up our heifers.

Sire of Lot 18

Reference Sire *S A V Mountain Time 1695*

Bull Reg. 17016627 1/9/11
 TC GRIDIRON 258 # G A R GRID MAKER #
 S A V IRON MOUNTAIN 8066 # TC BLACKBIRD 7049 #
 S A V MADAME PRIDE 3249 S A V 8180 TRAVELER 004 #
 S A V MADAME PRIDE 8264
 LEACHMAN RIGHT TIME # N BAR EMULATION EXT #
 S A V ELBA 917 LEACHMAN ERICA 0025
 S A V ELBA 1094 S A F 598 BANDO 5175 #
 S A V ELBA 7099

CED	BW	WW	YW	Milk	
+4	+2.2	+49	+94	+19	
Marb	REA	Fat	\$W	\$F	\$B
+0.59	-0.18	+0.010	38.50	52.99	111.67

We purchased this bull from Schaff Angus Valley for \$20,000. He is a bull I used on heifers for a couple years with minimal trouble. Now use him on clean up after AI. Daughters seem to be really well built and showy cows with plenty of milk.

Sire of Lots 36, 72, 73

Reference Sires



Reference Sire

HA Bismarck 1911

Bull Reg. +17058491 2/4/11

G A R GRID MAKER #
S A V BISMARCK 5682 #
S A V ABIGALE 0451

G D A R TRAVELER 044 #
G A R PRECISION 2536
SCHOENES FIX IT 826 #
S A V ABIGALE 6062

HIGH VALLEY 4C6 AMBUSH #
H A BLACKCAP LADY 1015
H A RITO BLACKCAP 9038

PARAMONT AMBUSH 2172 #
HIGH VALLEY GLORIA 1Q2
H 96 RITO 2100 7371
H 96 BLACKCAP 3835

CED	BW	WW	YW	Milk	
+4	+1.3	+51	+86	+20	
Marb	REA	Fat	\$W	\$F	\$B
+0.43	+0.77	-0.12	45.86	50.83	137.76

Bismarck is a very long, good balanced and dispositioned bull that sires good females. A son of the great SAV Bismarck, and six Pathfinders in the tree, this bull is one we happily throw in to clean up after AI.

Sire of Lot 22

Reference Sire Peak Dot Unanimous 603A

Bull Reg. 17819559 3/24/13

VISIONTOPLINE ROYAL STOCKMAN
VISION UNANIMOUS 1418
VISION EDELLA 665

GAMBLES ROYAL FLUSH
LAGRAND PRIDE 7140
BOYD ON TARGET 1083 #
VISION EDELLA 337

MOHNEN DYNAMITE 1356 #
PANSY OF PEAK DOT 914U
PANSY OF PEAK DOT 396J

BALDRIDGE KABOOM K243 KCF #
MOHNEN JILT 910 #
DOUBLE AA RITO 287'97
PANSY OF PEAK DOT 668Z

CED	BW	WW	YW	Milk	
+1	+2.2	+59	+99	+13	
Marb	REA	Fat	\$W	\$F	\$B
+0.18	+0.34	+0.050	41.20	54.36	88.92

With excellent feet and legs, Unanimous is a long, heavy muscled powerhouse with a tremendous amount of depth and capacity. He comes from a good cow family in southern Canada and was used on our first calf heifers with no trouble.

Sire of Lots 35, 37, 54

Reference Sire

Apex Mtn Track 7801

Bull Reg. 17143480 2/9/11

APEX 450 WIDE TRACK 052
APEX WIDE TRACK 545
APEXETTE BLACKCAP 1080 #

APEX MTN FRONT 044
APEXETTE LUCY 6037
APEXETTE LUCY 1064

APEX WIDE TRACK 450
APEX ETTE 149 24E 0098 #
HOFF HEAD OF THE CLASS SC534 #
APEXETTE BLACKCAP 9089 #

CONNEALY FOREFRONT #
APEXETTE DELIA 6044 #
APEX TRAVEL TREND 079
APEXETTE LUCY 2035

CED	BW	WW	YW	Milk	
-8	+4.4	+60	+104	+29	
Marb	REA	Fat	\$W	\$F	\$B
-0.07	+0.23	-0.11	61.66	80.02	83.88

Purchased at Apex Angus, this bull is extremely long with lots of muscle and a good disposition. His sire, Apex Wide Track 545, is the same sire of Apex Black Leather's mother.

Sire of Lot 79

Reference Sire

RMF Heritage 637

Bull Reg. 17168142 3/12/11

CAR DUKE 104 #
S A V HERITAGE 6295 #
S A V BLACKCAP MAY 4136

CAR TRACKER 904 #
C A R MISS RAINDANCER 421 #
S A V 8180 TRAVELER 004 #
S A V MAY 2397 #

OX BOW RIGHT TIME 338-4262
R M F BLACKBIRD 637 #
R M BLACKBIRD 012

HYLINE RIGHT TIME 338 #
GDAR BLACKETTE LADY 720
FAR RANCHERS CHOICE 161
C H BLACKBIRD C5939

CED	BW	WW	YW	Milk	
-4	+2.6	+69	+119	+28	
Marb	REA	Fat	\$W	\$F	\$B
+0.52	+0.40	+0.021	74.95	87.97	151.29

Heritage 637 is a super-long and super-thick bull out of one of our best cows.

Sire of Lots 39, 51, 63

Reference Sire

Peak Dot Bold 617Y

Bull Reg. +17464793 3/14/11

MOHNEN DYNAMITE 1356 #
PEAK DOT BOLD 204U
QUEEN OF PEAK DOT 652S

BALDRIDGE KABOOM K243 KCF #
MOHNEN JILT 910 #
S A V 004 PREDOMINANT 4438 #
QUEEN OF PEAK DOT 806P

HF POWER-UP 72N
LADY OF PEAK DOT 476S
LADY OF PEAK DOT 566N

RIVERBEND POWERLINE 0050
HF ROSEBUD 23G
S A V SAUGAHATCHEE 9374
LADY OF PEAK DOT 387J

CED	BW	WW	YW	Milk	
+5	+2.4	+50	+99	+21	
Marb	REA	Fat	\$W	\$F	\$B
+0.01	+0.35	+0.031	40.74	57.34	89.76

We picked this big long thick and hairy bull at the Peak Dot sale. He comes from a good cow family.

Sire of Lot 33

Reference Sire

RMF Harvester 433

Bull Reg. 18043193 2/28/14

S A V HERITAGE 6295 #
S A V HARVESTOR 0338
S A V EMBLYNETTE 7749

CAR DUKE 104 #
S A V BLACKCAP MAY 4136
S A V NET WORTH 4200 #
SAV EMBLYNETTE DIAMOND 6377 #

CONNEALY DANNY BOY #
VERMILION BECKY 6047 #
VERMILION BECKY 4198

CONNEALY TIMELINE #
ENERGY OF CONANGA 4851
VERMILION NEW DESIGN M097
VERMILION BECKY 5258

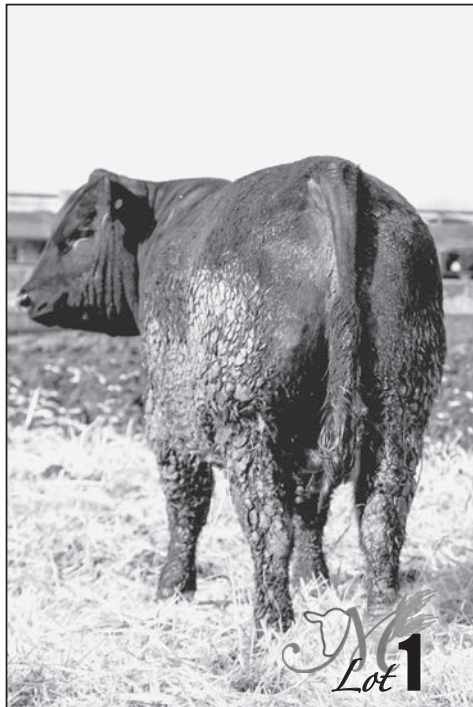
CED	BW	WW	YW	Milk	
-6	+5.7	+55	+101	+26	
Marb	REA	Fat	\$W	\$F	\$B
+0.58	+0.64	+0.047	42.49	66.11	140.43

This bull we raised and keep to use to clean up on cows after AI. His calves were born later and caught up to the rest by weaning time.

Sire of Lot 29



RME Idol 1D Kate Lorne



1 *M* **RME Idol 1D**
 Bull Reg. 18718783 Tattoo: 1D DOB: 03/08/16

H A R B ICON 019 S A V FINAL ANSWER 0035 #
 H A R B IDOL 112 H A R B BELLE NELLIE 702-707
 H A R B LADY CAMILLIA 802 H A R B WINDY 702 JH #
 H A R B LADY CAMILLIA 649
 WMR TIMELESS 20 WMR TIMELESS 458 #
 CM FOREVER LADY Z037 WMR EILEEN 862
 CM FOREVER LADY 037 APEX BLACK LEATHER 718
 C M FOREVER LADY 8650



CED	BW	WW	YW	Milk	SC	Doc
-7	+4.1	+63	+112	+28	+1.32	+26
CW	Marb	REA	\$W	\$F	\$B	Dam Production
+44	+.24	+.24	57.92	76.85	104.85	1 WR 100
Act. BW	Act. WW	205 wt.	NR	Adj. Sale Wt	ADG	Act. SC
94	854	801	100	1576	4.95	37.5

Excellent and gentle Idol son, with tons of thickness, muscle, volume, and scale crushing performance built in. He weaned off heavy, and hasn't slowed. Dam comes from a long line of great cows we've had, and she is not skipping a beat. Bull is top 4% in the breed for WW, 5% YW, 10% in docility and \$F value. Maybe no coincidence, but the dam exceeds in these values as well. We expect Idol to add pounds to your program, and should make an outstanding herd sire.



RMF Renown 2D

2 *M* *RMF Renown 2D*
 Bull Reg. 18712261 Tattoo: 2D DOB: 03/04/16

RITO 707 OF IDEAL 3407 7075 RR RITO 707 #
 IDEAL 3407 OF 1418 076
 S A V RENOWN 3439 S A V 8180 TRAVELER 004 #
 S A V BLACKCAP MAY 4136 S A V MAY 2397 #
 R M F REALLY COOL 7242 HOLMAN COOL COUNTRY R535
 R M BEAUTY 242 #
 RMF LASS Y719 VERMILION NEW DESIGN M904
 R M F LASS 719 N W LASS 919



CED	BW	WW	YW	Milk	SC	Doc
+11	+0.3	+61	+102	+32	+1.08	+35
CW	Marb	REA	\$W	\$F	\$B	Dam Production
+55	+0.14	+0.49	72.28	70.18	138.73	2 WR 107
Act. BW	Act. WW	205 wt.	NR	Adj. Sale Wt	ADG	Act. SC
82	745	679	107	1453	4.83	39

Four star calving ease, and excellent Renown son. Lot of length, and packed with deep muscle. Ranking top 2% \$W, 4% Milk and CW, 10% WW, and 15% in CED, YW, and \$B value. Should be a tremendous heifer bull and a great herd sire prospect.



3 *M* *RMF Duty Free 3D*
 Bull Reg. 18712260 Tattoo: 3D DOB: 03/11/16

R B ACTIVE DUTY 010 LCC NEW STANDARD #
 B A LADY 6807 305
 APEX DUTY FREE 283
 APEXETTE RACHEL 1098 WMR HERO 829
 APEXETTE RACHEL 8844 #
 GDAR GAME ON 8260 GDAR GAME DAY 449 #
 GDAR EVER LADY 4214 #
 BRUSETT CYNTHIA Y120
 BRUSETT CYNTHIA W627 # VERMILION EXTRA T221
 BRUSETT CYNTHIA P627



CED	BW	WW	YW	Milk	SC	Doc
+9	+1.2	+58	+98	+26	+0.89	+9
CW	Marb	REA	\$W	\$F	\$B	Dam Production
+19	+0.34	+0.33	61.3	56.5	79.57	4 WR 107
Act. BW	Act. WW	205 wt.	NR	Adj. Sale Wt	ADG	Act. SC
78	784	726	114	1318	3.71	37.5

Four star calving ease Duty Free son. He has been a favorite since day one. He is loaded with muscle and was the lightest birth & heaviest weaning Duty Free son. Dam has been a great producer for us.



Whitewater, MT 59544



4 *M*

RME Mentor 4D

Bull Reg. 18712259 Tattoo: 4D DOB: 03/01/16

CONNEALY MENTOR 7374# G A R RETAIL PRODUCT #
 EXECUTA OF CONANGA 939 #
 CONNEALY MENTOR 4660 442B
 JAZE OF CONANGA 234 CONNEALY LEAD ON #
 JAYCEE OF CONANGA 233
 SHIPWHEEL CHINOOK # H A IMAGE MAKER 0415 #
 APEX ERISKAY 5506 #
 RMF QUEEN Y9331
 RMF QUEEN 9331 VERMILION DUTCHMAN N813
 R M QUEEN 331



CED	BW	WW	YW	Milk	SC	Doc
-5	+2.9	+62	+109	+32	+1.46	+20
CW	Marb	REA	\$W	\$F	\$B	Dam Production
+43	+0.23	+0.89	63.9	64.39	115.84	3 WR 114
Act. BW	Act. WW	205 wt.	NR	Adj. Sale Wt	ADG	Act. SC
95	885	800	126	1442	3.88	38

Very nice Mentor son, packed with length and tons of maternal value. Bull has very nice numbers across the board. Top 4% in Milk, and 10% in WW, YW, RE, and \$W value.

Delivery

Free delivery within MT and out of state at cost.



5 *M*

RME Cowboy 5D

Bull Reg. 18712258 Tattoo: 5D DOB: 03/08/16

CONNEALY CONSENSUS 7229# BLUE LILLY OF CONANGA 16
 S A V COWBOY 4874 S A V NET WORTH 4200 #
 S A V EMBLYNETTE 7545 S A V EMBLYNETTE 7260 #
 HARB PENDLETON 765 J H #
 21AR ROUNDUP 7005 # 21AR BLACKBIRD LADY F645
 KM BLACKCAP LADY Y262
 N P BLACKCAP LADY 0262 # A A R REALLY WINDY 10 #
 N P BLACKCAP LADY 0062



CED	BW	WW	YW	Milk	SC	Doc
+2	+2.3	+58	+99	+23	+1.59	+15
CW	Marb	REA	\$W	\$F	\$B	Dam Production
+51	+0.90	+1.03	59.62	59.52	154.11	4 WR 103
Act. BW	Act. WW	205 wt.	NR	Adj. Sale Wt	ADG	Act. SC
85	724	667	105	1305	4	37.5

Our first Cowboy to offer, and what we were hoping for. Long, and lots of thick heavy muscle. Loaded with volume and the best ribeye we have this year. Dam is another we've been happy with for a long time. Top 4% RE and \$B, 10% CW, and 15% Marb, WW, and \$W.



6 *M* **RMF Upward 6D**

Bull Reg. 18712268 Tattoo: 6D DOB: 03/05/16

SITZ UPWARD 307R#
SHIPWHEEL UPWARD 2517
SHIPWHEEL ENCHANTRESS 8184

HA PROGRAM 7239
RMF BLACKBIRD Y718
R M F BLACKBIRD 718

CONNEALY ONWARD #
SITZ HENRIETTA PRIDE 81M

HOLMAN 208 P44
DR J MS APEX 053 L35

HA PROGRAM 5652 #
HA PRIMROSE 5785

NORTH POLE 316
R M BLACKBIRD 118



CED	BW	WW	YW	Milk	SC	Doc
+16	-.5	+58	+102	+28	+1.36	+23
CW	Marb	REA	\$W	\$F	\$B	Dam Production
+38	+46	+41	68.61	61.83	112.21	3 WR 100
Act. BW	Act. WW	205 wt.	NR	Adj. Sale Wt	ADG	Act. SC
82	744	679	107	1338	4.09	38

A long and powerful four star calving ease Upward son. Ranks top 2% CE, 3% \$W, he should perform great in any heifer program.

8 *M* **RMF Eliminator 8D**

Bull Reg. 18712256 Tattoo: 8D DOB: 03/19/16

S A V ELIMINATOR 9105
PEAK DOT ELIMINATOR 719Z
LADY OF PEAK DOT 986U

CONNEALY REVENUE 6456
CM BLACKCAP LADY 3788
C M BLACKCAP 788

RITO 707 OF IDEAL 3407 7075
S A V ABIGALE 5646

S A V 004 PREDOMINANT 4438 #
LADY OF PEAK DOT 782L

RITO REVENUE 5M2 OF 2536 PRE #
ELFEENA OF CONANGA 3866

R M F REALLY WINDY 4420
N P SKY HIGH 778



CED	BW	WW	YW	Milk	SC	Doc
-4	+4.3	+49	+79	+27	+1.18	+1
CW	Marb	REA	\$W	\$F	\$B	Dam Production
+31	+42	+07	47.63	32.06	87.35	1 WR 109
Act. BW	Act. WW	205 wt.	NR	Adj. Sale Wt	ADG	Act. SC
90	692	694	109	1291	4.1	40

An Eliminator son to put on the cows. Dam is a young daughter of Revenue with good genetics. She has been performing real well.

7 *M* **RMF Duty Free 7D**

Bull Reg. 18712257 Tattoo: 7D DOB: 03/08/16

R B ACTIVE DUTY 010
APEX DUTY FREE 283
APEXETTE RACHEL 1098

K M MORGANS DIRECTION 6608
CM FAME GAL Y8906
C M FAME GAL 8906

LCC NEW STANDARD #
B A LADY 6807 305

WMR HERO 829
APEXETTE RACHEL 8844 #

MORGANS DIRECTION 111 9901 #
N P BLACK LADY 2605

BOBCAT DANNY BOY 5004
N P FAME GAL 906



CED	BW	WW	YW	Milk	SC	Doc
+5	+2.1	+50	+92	+20	+1.53	+3
CW	Marb	REA	\$W	\$F	\$B	Dam Production
+23	-.04	+06	44.13	53.98	67.33	3 WR 101
Act. BW	Act. WW	205 wt.	NR	Adj. Sale Wt	ADG	Act. SC
89	739	681	107	1352	4.21	39

Two star calving ease, a well-muscled Duty Free. His Dam has produced three very nice calves for us





11 *M* RMF Eliminator 11D

Bull Reg. 18712253 Tattoo: 11D DOB: 03/17/16
 S A V ELIMINATOR 9105 RITO 707 OF IDEAL 3407 7075
 PEAK DOT ELIMINATOR 756Z S A V ABIGALE 5646
 BARDOLIA OF PEAK DOT 945U MOHNEN DYNAMITE 1356 #
 BARDOLIA OF PEAK DOT 585K
 A A R REALLY WINDY 10 # A A R REALLY WINDY 1205 #
 R M F BLACKBIRD ULTIMATE 429 S A F FERNS PRIDE 3118
 N P BLACKCAP ULTIMATE 859 G D A R TRAVELER 561 #
 S R BLACKBIRD ULTIMATE 59 **ISOK**

CED	BW	WW	YW	Milk	SC	Doc
+5	+2.5	+51	+88	+23	+77	+31
CW	Marb	REA	\$W	\$F	\$B	Dam Production
+40	+1.19	+38	49.87	44.37	104.71	5 WR 98
Act. BW	Act. WW	205 wt.	NR	Adj. Sale Wt	ADG	Act. SC
	700	683	107	1144	3.1	35.5

Powerful two star calving Eliminator son from a good Real Windy daughter.

9 *M* RMF Harvester 9D

Bull Reg. 18712255 DDC Tattoo: 9D DOB: 03/10/16
 S A V HERITAGE 6295 # CAR DUKE 104 #
 S A V BLACKCAP MAY 4136
 S A V HARVESTOR 0338 S A V NET WORTH 4200 #
 S A V EMBLYNETTE 7749 SAV EMBLYNETTE DIAMOND 6377 #
 SITZ NEW DESIGN 458N # BON VIEW NEW DESIGN 1407 #
 CM BEAUTY 0775 SITZ ELLUNAS ELITE 3308
 N P BEAUTY 775 E 7 SUPER HI SPADE 11
 S R WARRANT BEAUTY 784 # **ISOK**

CED	BW	WW	YW	Milk	SC	Doc
-1	+5	+58	+108	+26	+1.28	+12
CW	Marb	REA	\$W	\$F	\$B	Dam Production
+49	+52	+45	52.84	74.78	128.25	4 WR 109
Act. BW	Act. WW	205 wt.	NR	Adj. Sale Wt	ADG	Act. SC
89	800	740	116	1515	4.88	36

A well balanced Harvester bull with plenty of shape and substance, super structure, and solid statistics. His dam is an excellent young cow that we're going to have around for a long time. He is top 5% in \$F, and 10% CW and YW, and 15% WW.



12 *M* RMF Mentor 12D

Bull Reg. 18712252 Tattoo: 12D DOB: 03/06/16
 CONNEALY MENTOR 7374 # G A R RETAIL PRODUCT #
 EXECUTA OF CONANGA 939 #
 CONNEALY MENTOR 4660 442B
 JAZE OF CONANGA 234 CONNEALY LEAD ON #
 JAYCEE OF CONANGA 233
 R M F REALLY WINDY 4420 A A R REALLY WINDY 10 #
 R M F NICOLE 8827 N P FOREVER LADY 9255
 FAR 152 NICOLE 827 FAR EL TIGRE 233
 FAR 8704 RITO 152 # **ISOK**

CED	BW	WW	YW	Milk	SC	Doc
+2	+3.7	+56	+97	+27	+1.59	+11
CW	Marb	REA	\$W	\$F	\$B	Dam Production
+40	+52	+96	57.09	55.85	124.62	4 WR 106
Act. BW	Act. WW	205 wt.	NR	Adj. Sale Wt	ADG	Act. SC
90	731	670	105	1464	4.98	38

Two star calving ease. Long bodied, and deep muscled, he's another high ribeye bull. Ranking top 10% RE and 15% \$W



10 *M* RMF Duty Free 10D

Bull Reg. 18712254 Tattoo: 10D DOB: 03/09/16
 R B ACTIVE DUTY 010 LCC NEW STANDARD #
 APEX DUTY FREE 283 B A LADY 6807 305
 APEXETTE RACHEL 1098 WMR HERO 829
 APEXETTE RACHEL 8844 #
 APEX BLACK LEATHER 718 APEX FOCUS 053
 APEXETTE WINGINA 4062
 KM PATTY Y9911 SITZ NEW DESIGN 458N #
 KM PATTY 9911 N W PATTY 911 **ISOK**

CED	BW	WW	YW	Milk	SC	Doc
+7	+1.5	+53	+96	+28	+1.78	+16
CW	Marb	REA	\$W	\$F	\$B	Dam Production
+37	+49	+2	52	62.7	123.2	2 WR 95
Act. BW	Act. WW	205 wt.	NR	Adj. Sale Wt	ADG	Act. SC
87	690	637	100	1331	4.37	37

Smooth two star calving ease Duty Free son, from a very nice Black Leather daughter.

13 *M* RMF Timber Line 13D

Bull Reg. 18712262 Tattoo: 13D DOB: 03/20/16
 APEX WINDY 078 # H A R B WINDY 702 JH #
 APEXETTE LUCY 6037
 APEX LIMITED EDITION 942
 APEXETTE KINCHTRY 1078
 JR ROCK'N D AMBUSH 042L ROCKN D AMBUSH 1531 #
 JOLLY R ROSE 018A
 R M F FOREVER LADY 405 A A R STAMPEDE 3517
 N P LADY 0109 NORTH POLE LADY 601 **ISOK**

CED	BW	WW	YW	Milk	SC	Doc
+2	+3.4	+45	+73	+23	+1.32	+4
CW	Marb	REA	\$W	\$F	\$B	Dam Production
+15	+51	+1	33.36	22.67	72.04	9 WR 100
Act. BW	Act. WW	205 wt.	NR	Adj. Sale Wt	ADG	Act. SC
94	732	719	113	1260	3.65	37.5

A nice two star calving ease bull from a 13 year old cow. She's been raising great calves for us for a long time. Many of her daughters have been retained, some have since become Pathfinders.



14 *RMF Duty Free 14D*

16 *RMF Mtn Time 16D*

Bull Reg. 18712267 Tattoo: 14D DOB: 03/07/16
 R B ACTIVE DUTY 010
 APEX DUTY FREE 283
 APEXETTE RACHEL 1098
 SYDGEN C C & 7 #
 RMF FOREVER LADY Y301
 N P FOREVER LADY 301

Bull Reg. 18712250 Tattoo: 16D DOB: 03/26/16
 S A V IRON MOUNTAIN 8066#
 S A V MOUNTAIN TIME 1695
 S A V ELBA 917
 K M MORGANS DIRECTION 6608
 KM FANNY Z9624
 KM FANNY 9624

LCC NEW STANDARD #
 B A LADY 6807 305
 WMR HERO 829
 APEXETTE RACHEL 8844 #
 S A F CONNECTION #
 SYDGEN FOREVER LADY 4087
 JR ROCK'N D AMBUSH 042L
 N P FOREVER LADY 901 #

TC GRIDIRON 258 #
 S A V MADAME PRIDE 3249
 LEACHMAN RIGHT TIME #
 S A V ELBA 1094
 MORGANS DIRECTION 111 9901 #
 N P BLACK LADY 2605
 HOLMAN COOL COUNTRY R535
 K M FANNY 624 #

CED	BW	WW	YW	Milk	SC	Doc
+8	+2.2	+58	+99	+26	+1.52	+15
CW	Marb	REA	\$W	\$F	\$B	Dam Production
+23	+0.17	-0.10	61.4	63.26	78.95	3 WR 108
Act. BW	Act. WW	205 wt.	NR	Adj. Sale Wt	ADG	Act. SC
95	748	688	108	1364	4.23	38

CED	BW	WW	YW	Milk	SC	Doc
+11	+0.2	+48	+86	+22	-.02	+6
CW	Marb	REA	\$W	\$F	\$B	Dam Production
+26	+0.37	-0.24	40.77	48	92.45	2 WR 110
Act. BW	Act. WW	205 wt.	NR	Adj. Sale Wt	ADG	Act. SC
77	692	685	108	1362	4.56	33

Two star calving ease powerhouse and a big scrotal, this bull has what you need. Dam is a good calving ease cow and well uddered, with great Pathfinder prospects. Top 10% \$W, and 15% WW and \$F.

An attractive four star calving ease son of Mountain Time. A low birthweight bull with thickness, muscle, and fleshing ability.



15 *RMF Cowboy 15D*

17 *RMF Upward 17D*

Bull Reg. 18712251 Tattoo: 15D DOB: 03/04/16
 CONNEALY CONSENSUS 7229#
 S A V COWBOY 4874
 S A V EMBLYNETTE 7545
 VERMILION DUTCHMAN N813
 C M MISS VIKING 763
 N P MISS VIKING 963 #

Bull Reg. 18712249 Tattoo: 17D DOB: 03/09/16
 SITZ UPWARD 307R#
 SHIPWHEEL UPWARD 2517
 SHIPWHEEL ENCHANTRESS 8184
 VERMILION 7078 DATELINE X276
 RMF JILL Z716
 R M F PRINCESS JILL 716

CONNEALY CONSENSUS #
 BLUE LILLY OF CONANGA 16
 S A V NET WORTH 4200 #
 S A V EMBLYNETTE 7260 #
 RALLY DUTCHMAN 219
 VERMILION LASS 0868 #
 G D A R TRAVELER 561 #
 MAXAMS MISS VIKING R M 666

CONNEALY ONWARD #
 SITZ HENRIETTA PRIDE 81M
 HOLMAN 208 P44
 DR J MS APEX 053 L35
 VERMILION DATELINE 7078 #
 VERMILION QUEENALL 5051 #
 R M F REALLY WINDY 4420
 S A PRINCESS JILL 416

CED	BW	WW	YW	Milk	SC	Doc
+7	+2.1	+53	+94	+23	+1.61	+24
CW	Marb	REA	\$W	\$F	\$B	Dam Production
+31	+0.77	+0.56	55.13	54.11	115.13	6 WR 95
Act. BW	Act. WW	205 wt.	NR	Adj. Sale Wt	ADG	Act. SC
88	771	703	111	1354	4.02	35.5

CED	BW	WW	YW	Milk	SC	Doc
+5	+2.6	+66	+109	+32	+0.8	+26
CW	Marb	REA	\$W	\$F	\$B	Dam Production
+35	+0.62	+0.42	70.12	69.63	120.87	3 WR 104
Act. BW	Act. WW	205 wt.	NR	Adj. Sale Wt	ADG	Act. SC
783	738	738	116	1443	4.53	37.5

Two star calving ease, and excellent length and muscle. Ranks higher in WW, YW, and Marb. Very nice Cowboy son from a Dutchman daughter that is done well for us.

Two star calving ease, another excellent Upward son, with lots of length and muscle. With a VRD mother, this bull should bring lots of length to your program. Top 2% WW, 3% \$W, 4% Milk, and top 10% YW and \$B.

18 *RMF Timeless 18D*

Bull Reg. 18712248 Tattoo: 18D DOB: 03/19/16

WMR TIMELESS 20
RMF TIMELESS 48A
RMF AALEEN 0404

H A R B IDOL 112
RMF NICOLE 4134
RMF NICOLE 0720

WMR TIMELESS 458 #
WMR EILEEN 862
SITZ NEW DESIGN 458N #
R M F AALEEN 404
H A R B ICON 019
H A R B LADY CAMILLIA 802
R M F REALLY COOL 7242
R M F NICOLE 720 #



CED	BW	WW	YW	Milk	SC	Doc
+13	+5	+54	+95	+27	+7.5	+18
CW	Marb	REA	\$W	\$F	\$B	Dam Production
+32	+4.8	+35	67.31	49.62	95.11	1 WR 100
Act. BW	Act. WW	205 wt.	NR	Adj. Sale Wt	ADG	Act. SC
75	638	673	100	1329	4.68	34

Four star calving ease Timeless son that's been having great gains at the feedlot. Dam a first calf heifer Idol daughter that stood out. Ranks top 4% in \$W and 10% CED.

19 *RMF Black Leather 19D*

Bull Reg. 18712247 Tattoo: 19D DOB: 03/17/16

APEX FOCUS 053
APEX BLACK LEATHER 718
APEXETTE WINGINA 4062

R M F LEAD ON 5507
RMF DONNA Z413
R M F DONNA 413

MYTTY IN FOCUS #
APEXETTE DARKLADY 1002
APEX 450 WIDE TRACK 052
APEXETTE WINGINA 1781
CONNELLY LEAD ON #
N P AALEEN 305 #
A A R REALLY WINDY 10 #
A A R DONNA 2367



CED	BW	WW	YW	Milk	SC	Doc
+12	-2.9	+47	+85	+27	+1.31	+20
CW	Marb	REA	\$W	\$F	\$B	Dam Production
+41	+3.3	+61	58.54	45.5	123.48	3 WR 100
Act. BW	Act. WW	205 wt.	NR	Adj. Sale Wt	ADG	Act. SC
80	692	668	105	1342	4.43	38

Another four star calving ease son of Black Leather. Ranks top 1% in Birth% and 10% CED. Dam is a Lead On daughter. This is a sure fire sleep all night heifer bull!

20 *RMF Duty Free 20D*

Bull Reg. 18712246 Tattoo: 20D DOB: 03/10/16

R B ACTIVE DUTY 010
APEX DUTY FREE 283
APEXETTE RACHEL 1098

R M F LEAD ON 5507
CM FAME GAL 0906
N P FAME GAL 906

LCC NEW STANDARD #
B A LADY 6807 305
WMR HERO 829
APEXETTE RACHEL 8844 #
CONNELLY LEAD ON #
N P AALEEN 305 #
S A F FAME #
NORTH POLE GAL 606



CED	BW	WW	YW	Milk	SC	Doc
+8	+2.2	+51	+92	+19	+1.39	+4
CW	Marb	REA	\$W	\$F	\$B	Dam Production
+20	+2.7	-.03	44.32	53.5	76.23	4 WR 99
Act. BW	Act. WW	205 wt.	NR	Adj. Sale Wt	ADG	Act. SC
92	726	672	106	1287	3.87	40

Well-built two star calving ease bull from a good uddered, productive cow.

21 *RMF Duty Free 21D*

Bull Reg. 18712245 Tattoo: 21D DOB: 03/08/16

R B ACTIVE DUTY 010
APEX DUTY FREE 283
APEXETTE RACHEL 1098

K M MORGANS DIRECTION 6608
RMF GAL Y9371
N P FREEDOM GAL 9371 #

LCC NEW STANDARD #
B A LADY 6807 305
WMR HERO 829
APEXETTE RACHEL 8844 #
MORGANS DIRECTION 111 9901 #
N P BLACK LADY 2605
G D A R TRAVELER 561 #
S R FREEDOM GAL 371



CED	BW	WW	YW	Milk	SC	Doc
+4	+2.7	+41	+78	+26	+5	+9
CW	Marb	REA	\$W	\$F	\$B	Dam Production
+14	+2.2	-.04	36.98	37.64	64.46	2 WR 104
Act. BW	Act. WW	205 wt.	NR	Adj. Sale Wt	ADG	Act. SC
86	703	648	102	1234	3.66	34.5

Two star calving ease Duty Free, whose dam is a daughter of one of the most productive cows we've had.

22 *RMF Bismark 22D*

Bull Reg. 18712244 Tattoo: 22D DOB: 04/17/16

S A V BISMARCK 5682#
HA BISMARCK 1911
H A BLACKCAP LADY 1015

VERMILION X FACTOR #
KM FANNY Y709
K M FANNY 709

G A R GRID MAKER #
S A V ABIGALE 0451
HIGH VALLEY 4C6 AMBUSH #
H A RITO BLACKCAP 9038
NICHOLS EXTRA K205 #
VERMILION LADY 2888

WOODLAWN CHARGE ON 14 #
K M FANNY 509 #



CED	BW	WW	YW	Milk	SC	Doc
+6	+1.4	+55	+95	+21	+8.2	+21
CW	Marb	REA	\$W	\$F	\$B	Dam Production
+35	+1.3	+64	40.98	53.82	107.95	1 WR 103
Act. BW	Act. WW	205 wt.	NR	Adj. Sale Wt	ADG	Act. SC
74	656	687	103	1200	3.74	36

Four star calving ease Bismark son.



23 *RMF Payweight 23D*

Bull Reg. 18720542 Tattoo: 23D DOB: 03/10/16

VERMILION PAYWEIGHT J847#
BASIN PAYWEIGHT 107S
BASIN LUCY 3829

R M F REALLY WINDY 4420
C M BLACKCAP 788
N P SKY HIGH 778

VERMILION DATELINE 7078 #
VERMILION LASS 7969

C A FUTURE DIRECTION 5321 #
BASIN LUCY 178E
A A R REALLY WINDY 10 #
N P FOREVER LADY 9255

E 7 SUPER HI SPADE 11
S R MISS SKY HIGH 569



CED	BW	WW	YW	Milk	SC	Doc
-12	+5.2	+58	+90	+18	+9.4	+23
CW	Marb	REA	\$W	\$F	\$B	Dam Production
+52	+4	+72	39.76	47.29	139.43	7 WR 100
Act. BW	Act. WW	205 wt.	NR	Adj. Sale Wt	ADG	Act. SC
102	785	727	114	1363	4	36

This Payweight son packs on a tremendous amount of length and muscle in one package. Top 10% CW, 15% \$B and YW, and a nice ribeye, this bull is full of growth. Keep him away from the heifers though, this is a no regret cow bull.

24 *RMF Duty Free 24D*

Bull Reg. 18712243 Tattoo: 24D DOB: 03/11/16

R B ACTIVE DUTY 010
APEX DUTY FREE 283
APEXETTE RACHEL 1098

RMF HERITAGE 9304
RMF NICOLE Z113
R M NICOLE 113

LCC NEW STANDARD #
B A LADY 6807 305
WMR HERO 829
APEXETTE RACHEL 8844 #
S A V HERITAGE 6295 #
N P FOREVER LADY 304 #
APEX TRENDSON 267
FAR 152 NICOLE 827



CED	BW	WW	YW	Milk	SC	Doc
+3	+4.1	+56	+106	+27	+1.8	+2
CW	Marb	REA	\$W	\$F	\$B	Dam Production
+36	+1.4	+06	52.52	76.66	100.71	2 WR 106
Act. BW	Act. WW	205 wt.	NR	Adj. Sale Wt	ADG	Act. SC
90	734	696	109	1377	3.83	40

Duty Free son with great scrotal that is top 10% YW and top 5% \$F. From a nice Heritage cow that ranks in the top 5% in RADG.

25

RMF Cowboy 25D

Bull Reg. 18712242 Tattoo: 25D DOB: 03/02/16

CONNEALY CONSENSUS 7229#
S A V COWBOY 4874
S A V EMBLYNETTE 7545

VERMILION X FACTOR W744
RMF BARBIE Z8644
R M F BARBIE 8644

CONNEALY CONSENSUS #
BLUE LILLY OF CONANGA 16
S A V NET WORTH 4200 #
S A V EMBLYNETTE 7260 #
VERMILION X FACTOR #
VERMILION BURGESS 2066
MYTTY IN FOCUS #
R M F BARBIE 644



CED	BW	WW	YW	Milk	SC	Doc
+4	+2.9	+55	+93	+20	+1.83	+13
CW	Marb	REA	\$W	\$F	\$B	Dam Production
+29	+4.8	+8	52.98	51.1	107.92	3 WR 90
Act. BW	Act. WW	205 wt.	NR	Adj. Sale Wt	ADG	Act. SC
88	672	626	98	1292	4.23	37.5

Two star calving, and another good Cowboy son There is a lot of power in this little package. Good ribeye bull



27

RMF Duty Free 27D

Bull Reg. 18712241 Tattoo: 27D DOB: 03/08/16

R B ACTIVE DUTY 010
APEX DUTY FREE 283
APEXETTE RACHEL 1098

F A R OUT 378M
R M F BEAUTY 674
N P BEAUTY 391

LCC NEW STANDARD #
B A LADY 6807 305
WMR HERO 829
APEXETTE RACHEL 8844 #
F A R KRUGERRAND 410H #
F A R MISS PANSY 195F
JR ROCK'N D AMBUSH 042L
N P BEAUTY 0091



CED	BW	WW	YW	Milk	SC	Doc
+3	+4.5	+58	+98	+25	+1.91	+17
CW	Marb	REA	\$W	\$F	\$B	Dam Production
+34	+1.5	+1.9	51.53	62.11	99.92	8 WR 102
Act. BW	Act. WW	205 wt.	NR	Adj. Sale Wt	ADG	Act. SC
90	734	698	110	1300	3.9	36

Nice cow bull with top 15% values in WW and \$F. Ten year old dam has given us eight calves, all were high level animals

30

RMF Duty Free 30D

Bull Reg. 18712238 Tattoo: 30D DOB: 03/23/16

R B ACTIVE DUTY 010
APEX DUTY FREE 283
APEXETTE RACHEL 1098

SITZ UPWARD 307R #
W C UPWARD 177 727
WILLOW CREEK GRID 727 867

LCC NEW STANDARD #
B A LADY 6807 305
WMR HERO 829
APEXETTE RACHEL 8844 #
CONNEALY ONWARD #
SITZ HENRIETTA PRIDE 81M
TC GRID TOPPER 355 #
WILLOW CREEK 517 867 51



CED	BW	WW	YW	Milk	SC	Doc
+5	+3.5	+54	+102	+25	+1.15	+16
CW	Marb	REA	\$W	\$F	\$B	Dam Production
+36	+3.8	+2.4	42.55	57.49	99.45	4 WR 103
Act. BW	Act. WW	205 wt.	NR	Adj. Sale Wt	ADG	Act. SC
89	680	653	97	1343	4.51	36

Two star calving ease bull, with a lot of length and thickness.

28

RMF Duty Free 28D

Bull Reg. 18712240 Tattoo: 28D DOB: 03/07/16

R B ACTIVE DUTY 010
APEX DUTY FREE 283
APEXETTE RACHEL 1098

K M MORGANS DIRECTION 6608
CM MISS VIKING Y8963
C M MISS VIKING 8693

LCC NEW STANDARD #
B A LADY 6807 305
WMR HERO 829
APEXETTE RACHEL 8844 #
MORGANS DIRECTION 111 9901 #
N P BLACK LADY 2605
BOBCAT DANNY BOY 5004
N P MISS VIKING 963 #



CED	BW	WW	YW	Milk	SC	Doc
+12	+5	+52	+91	+24	+1.23	+18
CW	Marb	REA	\$W	\$F	\$B	Dam Production
+23	+3.3	+3.1	54.48	58.22	94.06	4 WR 101
Act. BW	Act. WW	205 wt.	NR	Adj. Sale Wt	ADG	Act. SC
88	719	661	104	1295	3.96	33.5

Three star calving ease Duty Free son. Should be some nice performance here. Dam has been giving us great progeny.



29

RMF Harvestor 29D-433

Bull Reg. 18712239 Tattoo: 29D DOB: 04/10/16

S A V HARVESTOR 0338
RMF HARVESTOR 433
VERMILION BECKY 6047#

SANDY BAR GRASSLANDS 187W
RMF DONNA Y8413
R M F DONNA 8413

S A V HERITAGE 6295 #
S A V EMBLYNETTE 7749
CONNEALY DANNY BOY #
VERMILION BECKY 4198
SANDY BAR GRASSLANDS 94T
SANDY BAR MISS QUALITY 8T
R M F REALLY WINDY 4420
R M F DONNA 413



CED	BW	WW	YW	Milk	SC	Doc
+2	+4.6	+47	+83	+22	+1.27	+2
CW	Marb	REA	\$W	\$F	\$B	Dam Production
+35	+2.5	+3.4	37.11	43.32	105.88	2 WR 97
Act. BW	Act. WW	205 wt.	NR	Adj. Sale Wt	ADG	Act. SC
95	596	607	91	1177	3.96	36

Nice little powerful package, with lots of growth yet to come.

31

RMF Cowboy 31D

Bull Reg. 18712237 Tattoo: 31D DOB: 03/08/16

CONNEALY CONSENSUS 7229#
S A V COWBOY 4874
S A V EMBLYNETTE 7545

HA RELAY 8023
CM BEAUTY Z775#
N P BEAUTY 775

CONNEALY CONSENSUS #
BLUE LILLY OF CONANGA 16
S A V NET WORTH 4200 #
S A V EMBLYNETTE 7260 #
ER BROADCAST N305
HA BLACKCAP LADY 6883
E 7 SUPER HI SPADE 11
SR WARRANT BEAUTY 784 #



CED	BW	WW	YW	Milk	SC	Doc
+4	+1.9	+57	+90	+27	+1.99	+21
CW	Marb	REA	\$W	\$F	\$B	Dam Production
+29	+7.7	+3.5	62.34	40.98	103.28	3 WR 109
Act. BW	Act. WW	205 wt.	NR	Adj. Sale Wt	ADG	Act. SC
80	776	728	114	1338	3.88	37

Three star calving ease, and high marbling. This Cowboy has tremendous length, and loaded with muscle and volume. Comes from an excellent Pathfinder mother. Prospect for a great herd sire

32

RMF Duty Free 32D

Bull Reg. 18712236 Tattoo: 32D DOB: 03/23/16

R B ACTIVE DUTY 010
APEX DUTY FREE 283
APEXETTE RACHEL 1098
S A V NET WORTH 4200 #
RM PEARL Y207
R M PEARL 207

LCC NEW STANDARD #
B A LADY 6807 305
WMR HERO 829
APEXETTE RACHEL 8844 #
S A V 8180 TRAVELER 004 #
S A V MAY 2410
A A R REALLY WINDY 10 #
R M PEARL 010



CED	BW	WW	YW	Milk	SC	Doc
+9	+2.3	+44	+87	+26	+1.14	+7
CW	Marb	REA	\$W	\$F	\$B	Dam Production
+29	+1.17	+1.18	44.14	46.77	81.53	2 WR 100
Act. BW	Act. WW	205 wt.	NR	Adj. Sale Wt	ADG	Act. SC
90	678	651	102	1347	4.55	35.5

Nice and thick two star calving ease bull out of a Net Worth daughter.



33

RMF Bold 33D

Bull Reg. 18712235 Tattoo: 33D DOB: 03/24/16

PEAK DOT BOLD 204U
PEAK DOT BOLD 617Y
LADY OF PEAK DOT 476S
HA PROGRAM 7239
CM FOREEVER LADY Y255
N P FOREVER LADY 9255

MOHNEN DYNAMITE 1356 #
QUEEN OF PEAK DOT 652S
HF POWER-UP 72N
LADY OF PEAK DOT 566N
HA PROGRAM 5652 #
HA PRIMROSE 5785
G D A R TRAVELER 561 #
G D A R FOREVER LADY 4255



CED	BW	WW	YW	Milk	SC	Doc
+10	+1.8	+47	+87	+22	+1.01	+20
CW	Marb	REA	\$W	\$F	\$B	Dam Production
+22	+1.14	+1.28	42.1	43.96	72.33	3 WR 99
Act. BW	Act. WW	205 wt.	NR	Adj. Sale Wt	ADG	Act. SC
84	692	666	105	1369	4.61	37

Three star calving ease, with lots of length and muscle. From a Program daughter that is starting to show her worth. Been showing great gains

Delivery
Free delivery within MT and
out of state at cost.



34

RMF Fat Cat 34D

Bull Reg. 18714244 Tattoo: 34D DOB: 03/10/16

BDAR FAT CAT Z077
BDAR FAT CAT B400
BDAR ZARA 153Y
RMF DUTCHMAN 9113
RMF FOREVER LADY 209
CM FOREVER LADY 9110

CONNEALY CAPITALIST 028
SYDGEN CAROL ANN 7047
SYDGEN FORWARD 9130
BDAR ZARA 744T
VERMILION DUTCHMAN N813
R M NICOLE 113
SITZ NEW DESIGN 458N #
N P FOREVER LADY 0110 #



CED	BW	WW	YW	Milk	SC	Doc
+6	+1.8	+63	+105	+32	+1.16	+15
CW	Marb	REA	\$W	\$F	\$B	Dam Production
+32	+1.28	+1.6	76.73	68.73	104.83	1 WR 126
Act. BW	Act. WW	205 wt.	NR	Adj. Sale Wt	ADG	Act. SC
86	824	799	126	1495	4.62	38

Two star calving ease. A ranchers bull-powerful, deep ribbed, and loaded with muscle. High numbers across the board! He's becoming one of our favorites. Top 1% in \$W, 4% Milk, 5% WW, and 10% YW and \$F. Should become a great herd sire.

35

RMF Unanimous 35D

Bull Reg. 18712234 Tattoo: 35D DOB: 03/23/16

VISION UNANIMOUS 1418
PEAK DOT UNANIMOUS 603A
PANSY OF PEAK DOT 914U
RMF HERITAGE 9304
RMF FOREVER LADY 612A
R M F FOREVER LADY 612

VISIONTOPLINE ROYAL STOCKMAN
VISION EDELLA 665 #
MOHNEN DYNAMITE 1356 #
PANSY OF PEAK DOT 396J
S A V HERITAGE 6295 #
N P FOREVER LADY 304 #
BASIN MAX 602C #
N P FOREVER LADY 304 #



CED	BW	WW	YW	Milk	SC	Doc
-3	+3.4	+53	+86	+19	+1.98	+8
CW	Marb	REA	\$W	\$F	\$B	Dam Production
+23	+1.13	+1.18	35.72	38.69	70.97	2 WR 105
Act. BW	Act. WW	205 wt.	NR	Adj. Sale Wt	ADG	Act. SC
90	727	735	110	1392	4.54	37.5

Cow bull with lots of length

36

RMF Mtn Time 36D

Bull Reg. 18712233 Tattoo: 36D DOB: 04/02/16

S A V IRON MOUNTAIN 8066#
S A V MOUNTAIN TIME 1695
S A V ELBA 917
HOLMAN COOL COUNTRY R535
KM FANNY 9649
K M FANNY 649 #

TC GRIDIRON 258 #
S A V MADAME PRIDE 3249
LEACHMAN RIGHT TIME #
S A V ELBA 1094
RR COOL COUNTRY 2234
MISS CD FAR BLOCKBUSTER L18 #
F A R OUT 378M
K M FANNY 249 #



CED	BW	WW	YW	Milk	SC	Doc
+5	+2.6	+41	+86	+23	+1.27	+3
CW	Marb	REA	\$W	\$F	\$B	Dam Production
+35	+1.46	-1.17	32.62	57.11	113.47	6 WR 102
Act. BW	Act. WW	205 wt.	NR	Adj. Sale Wt	ADG	Act. SC
90	653	647	102	1279	4.26	38.5

Nice bull here from a gentle proven Cool Country cow

37 *RMF Unanimous 37D*

Bull Reg. 18712232 Tattoo: 37D DOB: 03/15/16

VISION UNANIMOUS 1418
PEAK DOT UNANIMOUS 603A
PANSY OF PEAK DOT 914U

RMF HERITAGE 637
RMF DONNA 413A
RMF DONNA 0413

VISIONTOPLINE ROYAL STOCKMAN
VISION EDELLA 665 #

MOHNEN DYNAMITE 1356 #
PANSY OF PEAK DOT 396J

S A V HERITAGE 6295 #
R M F BLACKBIRD 637 #

R M F LEAD ON 5507
R M F DONNA 413



CED	BW	WW	YW	Milk	SC	Doc
+10	-1.2	+58	+105	+18	+2.4	+6
CW	Marb	REA	\$W	\$F	\$B	Dam Production
+34	+3	+32	51.7	68.63	104.4	2 WR 100
Act. BW	Act. WW	205 wt.	NR	Adj. Sale Wt	ADG	Act. SC
65	638	635	95	1358	4.87	35

Four star calving ease bull that has been putting up great gains. Put him on the smaller heifers, and watch their calves catch right up

42 *RMF Mentor 42D*

Bull Reg. 18712229 Tattoo: 42D DOB: 03/09/16

CONNEALY MENTOR 7374#
CONNEALY MENTOR 4660 442B
JAZE OF CONANGA 234

HA 3540 DIRECTION 9500
CM FOREVER LADY Y901#
N P FOREVER LADY 901 #

G A R RETAIL PRODUCT #
EXECUTA OF CONANGA 939 #

CONNEALY LEAD ON #
JAYCEE OF CONANGA 233
HA FUTURE DIRECTION 3540
HA BLACKBIRD 5576

A A R STAMPEDE 3517
NORTH POLE LADY 601



CED	BW	WW	YW	Milk	SC	Doc
+11	+0	+55	+95	+30	+1.18	+12
CW	Marb	REA	\$W	\$F	\$B	Dam Production
+38	+3.4	+7.4	70.69	48.21	107.3	4 WR 108
Act. BW	Act. WW	205 wt.	NR	Adj. Sale Wt	ADG	Act. SC
86	809	746	117	1493	4.69	36

Very nice three star calving ease bull. High gaining, athletic, bull with good numbers and scrotal. Dam is a proven Pathfinder cow. Top 3% \$W, 10% Milk ratio

39 *Rmf Heritage 39D*

Bull Reg. 18712230 Tattoo: 39D DOB: 04/01/16

S A V HERITAGE 6295#
RMF HERITAGE 637
R M F BLACKBIRD 637#

R M F LEAD ON 5507
RMF MERLE Z647
R M F MERLE 647

CAR DUKE 104 #
S A V BLACKCAP MAY 4136

OX BOW RIGHT TIME 338-4262
R M BLACKBIRD 012

CONNEALY LEAD ON #
N P AALEEN 305 #

HILLTOPS GUNSMOKE 036
R M MERLE 004



CED	BW	WW	YW	Milk	SC	Doc
-4	+2.3	+56	+92	+24	+4.3	+5
CW	Marb	REA	\$W	\$F	\$B	Dam Production
+41	+6.3	+3.3	62.75	48.57	130.56	2 WR 101
Act. BW	Act. WW	205 wt.	NR	Adj. Sale Wt	ADG	Act. SC
87	645	652	97	1223	3.95	33

43 *RMF Duty Free 43D*

Bull Reg. 18712228 Tattoo: 43D DOB: 03/08/16

R B ACTIVE DUTY 010
APEX DUTY FREE 283
APEXETTE RACHEL 1098

RMF HERITAGE 9304
KM PATTY Y302
K M PATTY 302

LCC NEW STANDARD #
B A LADY 6807 305

WMR HERO 829
APEXETTE RACHEL 8844 #

S A V HERITAGE 6295 #
N P FOREVER LADY 304 #

HILLTOPS GUNSMOKE 036
NORTH WIND PATTY



CED	BW	WW	YW	Milk	SC	Doc
+11	+2.1	+53	+98	+23	+1.65	+13
CW	Marb	REA	\$W	\$F	\$B	Dam Production
+29	+2.8	+0.4	52.29	64.53	92.45	4 WR 100
Act. BW	Act. WW	205 wt.	NR	Adj. Sale Wt	ADG	Act. SC
84	743	684	108	1251	3.52	38

Three star calving ease bull with big scrotal from a cow family



41 *RMF Tour Of Duty 41D*

Bull Reg. 18720753 Tattoo: 41D DOB: 05/10/16

WERNER WAR PARTY 2417#
R B TOUR OF DUTY 177
B A LADY 6807 305

BASIN MAX 602C #
KM FOREVER LADY 9417
R M F FOREVER LADY 417

CONNEALY ONWARD #
BAAR USA LADY JAYE 489

VERMILION DATELINE 7078 #
G D LADY HI FLYER 302

G T MAXIMUM #
BASIN ELINE ERICA 315U #

JR ROCK'N D AMBUSH 042L
N P FOREVER LADY 0242 #



CED	BW	WW	YW	Milk	SC	Doc
-4	+4.1	+52	+93	+21	+1.4	+25
CW	Marb	REA	\$W	\$F	\$B	Dam Production
+49	+5.9	+7.4	35.91	58.83	154.82	4 WR 98
Act. BW	Act. WW	205 wt.	NR	Adj. Sale Wt	ADG	Act. SC
96	718	665	105	1320	4.13	34

Long and thick, lots of volume, he's a good indexing bull out of a 602C daughter

44 *RMF Duty Free 44D*

Bull Reg. 18712227 Tattoo: 44D DOB: 03/09/16

R B ACTIVE DUTY 010
APEX DUTY FREE 283
APEXETTE RACHEL 1098

CONNEALY PACKER 547 #
CM FOREVER LADY 0603
C M FOREVER LADY 603

LCC NEW STANDARD #
B A LADY 6807 305

WMR HERO 829
APEXETTE RACHEL 8844 #

FELTONS MEAT PACKER 62 #
BESTRELLE OF CONANGA 539

BOYD ON TARGET 1083 #
NORTH POLE LADY 601



CED	BW	WW	YW	Milk	SC	Doc
+10	+1.3	+56	+101	+28	+1.62	+17
CW	Marb	REA	\$W	\$F	\$B	Dam Production
+30	+6.9	+1.8	63.1	62.34	111.7	3 WR 108
Act. BW	Act. WW	205 wt.	NR	Adj. Sale Wt	ADG	Act. SC
86	784	723	114	1328	3.77	37.5

Three star calving. Deep muscle and a lot of length. Dam is becoming one of the next proven girls on the place. Expecting her to hit Pathfinder real soon



RMF Renown 45D

45 *Lot 45*

RMF Renown 45D

Bull Reg. 18712226 Tattoo: 45D DOB: 03/03/16

RITO 707 OF IDEAL 3407 7075
 S A V RENOWN 3439
 S A V BLACKCAP MAY 4136
 K M MORGANS DIRECTION 6608
 RMF AALEEN 9305
 N P AALEEN 305 #

R R RITO 707 #
 IDEAL 3407 OF 1418 076
 S A V 8180 TRAVELER 004 #
 S A V MAY 2397 #
 MORGANS DIRECTION 111 9901 #
 N P BLACK LADY 2605
 A A R REALLY WINDY 10 #
 N P AALEEN 0105



CED	BW	WW	YW	Milk	SC	Doc
-4	+4.1	+67	+111	+28	+66	+24
CW	Marb	REA	\$W	\$F	\$B	Dam Production
+44	+56	+33	65.99	80.63	137.55	5 WR 104
Act. BW	Act. WW	205 wt.	NR	Adj. Sale Wt	ADG	Act. SC
102	827	753	118	1572	5.09	34

Straight cow bull. Packed with muscle, volume, and performance. He is the highest daily gainer this year. Lots of performance in this bull is pedigree. His granddam is in our embryo program. We'll have lots of offspring from her this spring. Top 2% WW, 4% YW, 3% \$W, 5% \$E, 15% \$B

Volume Discount

We are offering a discount to our volume buyers. Purchase 4 bulls for a 4% discount. Purchase 5 bulls for a 5% discount, etc. We will offer a maximum discount of 10% for buyers purchasing 10 or more bulls.





46 *M* *RMF Duty Free 46D*

Bull Reg. 18712225 Tattoo: 46D DOB: 03/08/16

R B ACTIVE DUTY 010
APEX DUTY FREE 283
APEXETTE RACHEL 1098
CONNEALY PACKER 547 #
RMF LADY Y309
N P LADY 309 #

LCC NEW STANDARD #
B A LADY 6807 305
WMR HERO 829
APEXETTE RACHEL 8844 #
FELTONS MEAT PACKER 62 #
BESTRELLE OF CONANGA 539
A A R REALLY WINDY 10 #
N P LADY 0109



CED	BW	WW	YW	Milk	SC	Doc
+10	+1	+58	+101	+29	+1.25	+14
CW	Marb	REA	\$W	\$F	\$B	Dam Production
+29	+41	+08	67.87	61.6	98.57	1 WR 111
Act. BW	Act. WW	205 wt.	NR	Adj. Sale Wt	ADG	Act. SC
84	770	708	111	1443	4.61	39

Three star calving, and a very nice Duty Free son. Top 4% \$W, and 15% WW, YW, Milk

48 *M* *RMF Tour Of Duty 48D*

Bull Reg. 18720721 Tattoo: 48D DOB: 03/03/16

WERNER WAR PARTY 2417#
R B TOUR OF DUTY 177
B A LADY 6807 305
RMF HERITAGE 9304
KM PATTY Z302
K M PATTY 302

CONNEALY ONWARD #
BAAR USA LADY JAYE 489
VERMILION DATELINE 7078 #
G D LADY HI FLYER 302
S A V HERITAGE 6295 #
N P FOREVER LADY 304 #
HILLTOPS GUNSMOKE 036
NORTH WIND PATTY



CED	BW	WW	YW	Milk	SC	Doc
-4	+5.8	+57	+96	+22	+7.2	+25
CW	Marb	REA	\$W	\$F	\$B	Dam Production
+47	+23	+38	40.32	55.4	128.95	3 WR 99
Act. BW	Act. WW	205 wt.	NR	Adj. Sale Wt	ADG	Act. SC
102	669	626	98	1320	4.43	34

Another excellent cow bull. Long and laced with performance. Lots of great pedigree, and docile. Keep the heifers out!

47 *M* *RMF Cowboy 47D*

Bull Reg. 18712224 Tattoo: 47D DOB: 03/05/16

CONNEALY CONSENSUS 7229#
S A V COWBOY 4874
S A V EMBLYNETTE 7545
MYTTY IN FOCUS #
C M FOREVER LADY 8650
C M FOREVER LADY 650 #

CONNEALY CONSENSUS #
BLUE LILLY OF CONANGA 16
S A V NET WORTH 4200 #
S A V EMBLYNETTE 7260 #
S A F FOCUS OF E R #
MYTTY COUNTESS 906
MORGANS DIRECTION 111 9901 #
R M F FOREVER LADY 405



CED	BW	WW	YW	Milk	SC	Doc
+9	+8	+48	+81	+28	+2.01	+15
CW	Marb	REA	\$W	\$F	\$B	Dam Production
+29	+68	+65	56.38	37.21	114.18	6 WR 100
Act. BW	Act. WW	205 wt.	NR	Adj. Sale Wt	ADG	Act. SC
90	715	654	103	1410	4.73	39.5

Three star calving, good looking Cowboy

49 *M* *RMF Duty Free 49D*

Bull Reg. 18712223 Tattoo: 49D DOB: 03/12/16

R B ACTIVE DUTY 010
APEX DUTY FREE 283
APEXETTE RACHEL 1098
VERMILION DUTCHMAN N813
R M F DOLLY ANNA 8217
R M POLLY ANNA 217

LCC NEW STANDARD #
B A LADY 6807 305
WMR HERO 829
APEXETTE RACHEL 8844 #
RALLY DUTCHMAN 219
VERMILION LASS 0868 #
APEX HI ROAD 9899
N W POLLY ANNA



CED	BW	WW	YW	Milk	SC	Doc
+0	+3.6	+52	+97	+26	+1.46	+18
CW	Marb	REA	\$W	\$F	\$B	Dam Production
+29	+07	+18	42.68	56.15	78.73	6 WR 106
Act. BW	Act. WW	205 wt.	NR	Adj. Sale Wt	ADG	Act. SC
96	762	709	111	1284	3.66	39

50 *M* *RMF Cowboy 50D*

Bull Reg. 18712222 Tattoo: 50D DOB: 03/11/16

CONNEALY CONSENSUS 7229#
S A V COWBOY 4874
S A V EMBLYNETTE 7545
WOODLAWN CHARGE ON 14 #
K M FANNY 709
K M FANNY 509 #

CONNEALY CONSENSUS #
BLUE LILLY OF CONANGA 16
S A V NET WORTH 4200 #
S A V EMBLYNETTE 7260 #
CONNEALY LEAD ON #
D D PRIDE 211 5175
NORTH POLE 316
K M FANNY 249 #



CED	BW	WW	YW	Milk	SC	Doc
-5	+4	+54	+93	+27	+1.67	+14
CW	Marb	REA	\$W	\$F	\$B	Dam Production
+28	+58	+48	44.78	49.23	107.17	5 WR 103
Act. BW	Act. WW	205 wt.	NR	Adj. Sale Wt	ADG	Act. SC
94	721	670	105	1337	4.22	37



Whitewater, MT 59544

51

RMF Heritage 51D

Bull Reg. 18712221 Tattoo: 51D DOB: 03/27/16

S A V HERITAGE 6295#
RMF HERITAGE 637
R M F BLACKBIRD 637#

R M F 602C 6601
CM BEAUTY 9775
N P BEAUTY 775

CAR DUKE 104 #
S A V BLACKCAP MAY 4136
OX BOW RIGHT TIME 338-4262
R M BLACKBIRD 012
BASIN MAX 602C #
N P AALEEN 305 #
E 7 SUPER HI SPADE 11
S R WARRANT BEAUTY 784 #



CED	BW	WW	YW	Milk	SC	Doc
+2	+2.4	+53	+91	+25	+1.9	+17
CW	Marb	REA	\$W	\$F	\$B	Dam Production
+35	+3.2	+1.3	51.06	47	103.35	6 WR 102
Act. BW	Act. WW	205 wt.	NR	Adj. Sale Wt	ADG	Act. SC
88	693	674	106	1295	4.12	33

Great bull from a great cow family



52

RMF Eliminator 52D

Bull Reg. 18712220 Tattoo: 52D DOB: 03/25/16

S A V ELIMINATOR 9105
PEAK DOT ELIMINATOR 756Z
BARDOLIA OF PEAK DOT 945U

HA RELAY 8023
RMF POLLY ANNA 987A
RMF POLLY ANNA 9873

RITO 707 OF IDEAL 3407 7075
S A V ABIGALE 5646
MOHNEN DYNAMITE 1356 #
BARDOLIA OF PEAK DOT 585K
ER BROADCAST N305
HA BLACKCAP LADY 6883
SITZ NEW DESIGN 458N #
R M POLLY ANNA 217



CED	BW	WW	YW	Milk	SC	Doc
+11	+6	+54	+98	+23	+8	+26
CW	Marb	REA	\$W	\$F	\$B	Dam Production
+41	+3.1	+2.6	53.97	52.83	109.43	2 WR 97
Act. BW	Act. WW	205 wt.	NR	Adj. Sale Wt	ADG	Act. SC
79	635	650	97	1286	4.42	34

Four star calving ease bull

55

RMF Upward 55D

Bull Reg. 18712217 Tattoo: 55D DOB: 01/21/16

SITZ UPWARD 307R#
SHIPWHEEL UPWARD 2517
SHIPWHEEL ENCHANTRESS 8184

VERMILION DUTCHMAN N813
R M F DOLLY 8340
R M DOLLY 340

CONNELLY ONWARD #
SITZ HENRIETTA PRIDE 81M
HOLMAN 208 P44
DR J MS APEX 053 L35
RALLY DUTCHMAN 219
VERMILION LASS 0868 #
W I P BANKER 1505
R M DOLLY 103



CED	BW	WW	YW	Milk	SC	Doc
+12	+7	+49	+83	+27	+8	+25
CW	Marb	REA	\$W	\$F	\$B	Dam Production
+38	+5	+2	57.74	30.96	107.31	4 WR 96
Act. BW	Act. WW	205 wt.	NR	Adj. Sale Wt	ADG	Act. SC
76	685	577	91	1405	4.88	36.5

Nice four star calving ease Upward bull with great gains

53

RMF Upward 53D

Bull Reg. 18712219 Tattoo: 53D DOB: 03/25/16

SITZ UPWARD 307R#
SHIPWHEEL UPWARD 2517
SHIPWHEEL ENCHANTRESS 8184

RMF DUTCHMAN 9113
RMF NICOLE Z120
R M NICOLE 120

CONNELLY ONWARD #
SITZ HENRIETTA PRIDE 81M
HOLMAN 208 P44
DR J MS APEX 053 L35
VERMILION DUTCHMAN N813
R M NICOLE 113
APEX TRENDSON 267
FAR 7122 NICOLE 1507



CED	BW	WW	YW	Milk	SC	Doc
+12	+2.3	+48	+87	+25	+1.97	+19
CW	Marb	REA	\$W	\$F	\$B	Dam Production
+31	+5.5	+2.9	50.45	42.09	102.55	2 WR 97
Act. BW	Act. WW	205 wt.	NR	Adj. Sale Wt	ADG	Act. SC
80	660	652	103	1374	4.84	39

Three star calving ease Upward bull

58

RMF Cowboy 58D

Bull Reg. 18712215 Tattoo: 58D DOB: 03/08/16

CONNEALY CONSENSUS 7229#
S A V COWBOY 4874
S A V EMBLYNETTE 7545

HA 3540 DIRECTION 9500
RMF BLACKBIRD Z8001
R M F BLACKBIRD 8001

CONNEALY CONSENSUS #
BLUE LILLY OF CONANGA 16
S A V NET WORTH 4200 #
S A V EMBLYNETTE 7260 #
HA FUTURE DIRECTION 3540
HA BLACKBIRD 5576
R M F REALLY WINDY 4420
R M BLACKBIRD 001



CED	BW	WW	YW	Milk	SC	Doc
-6	+5.1	+50	+91	+26	+1.14	+6
CW	Marb	REA	\$W	\$F	\$B	Dam Production
+30	+5.6	+7.4	45.73	53.09	113.5	3 WR 104
Act. BW	Act. WW	205 wt.	NR	Adj. Sale Wt	ADG	Act. SC
96	728	686	108	1305	3.97	34

54

RMF Unanimous 54D

Bull Reg. 18712218 Tattoo: 54D DOB: 03/25/16

VISION UNANIMOUS 1418
PEAK DOT UNANIMOUS 603A
PANSY OF PEAK DOT 914U

VERMILION YELLOWSTONE #
VERMILION BLACKBIRD 4238
VERMILION BLACKBIRD 8016 #

VISIONTOPLINE ROYAL STOCKMAN
VISION EDELLA 665 #
MOHNEN DYNAMITE 1356 #
PANSY OF PEAK DOT 396J
VERMILION DATELINE 7078 #
VERMILION B JESTRESS 3912
HEATHCOTE 5204 TRAVELER 110A
VERMILION BLACKBIRD 6031



CED	BW	WW	YW	Milk	SC	Doc
+1	+3.1	+53	+92	+18	+1.2	+9
CW	Marb	REA	\$W	\$F	\$B	Dam Production
+33	+7.1	+2.7	41.89	52.32	108.24	10 WR 100
Act. BW	Act. WW	205 wt.	NR	Adj. Sale Wt	ADG	Act. SC
85	689	687	103	1339	4.43	38.5

Two star calving from one of our proven old cows

59

RMF Eliminator 59D

Bull Reg. 18712214 Tattoo: 59D DOB: 03/18/16

S A V ELIMINATOR 9105
PEAK DOT ELIMINATOR 756Z
BARDOLIA OF PEAK DOT 945U

RIVER HILLS OBJECTIVE T195
WC OBJECTIVE 2225 823
WILLOW CREEK TOTAL 823 442

RITO 707 OF IDEAL 3407 7075
S A V ABIGALE 5646
MOHNEN DYNAMITE 1356 #
BARDOLIA OF PEAK DOT 585K
S S OBJECTIVE T510 0T26 #
RIVER HILLS BARBARA R330 #
TC TOTAL 410 #
WILLOW CREEK 004 442 229



CED	BW	WW	YW	Milk	SC	Doc
+1	+3.5	+54	+95	+25	+6.9	+14
CW	Marb	REA	\$W	\$F	\$B	Dam Production
+40	+4.3	+3.9	49.29	47.75	111.21	3 WR 105
Act. BW	Act. WW	205 wt.	NR	Adj. Sale Wt	ADG	Act. SC
95	720	697	110	1240	3.97	36

60

RMF Mentor 60D

Bull Reg. 18712213 Tattoo: 60D DOB: 03/02/16

CONNEALY MENTOR 7374#
 CONNEALY MENTOR 4660 442B
 JAZE OF CONANGA 234

HA RELAY 8023
 RMF BLACKBIRD Z637
 R M F BLACKBIRD 637 #

G A R RETAIL PRODUCT #
 EXECUTA OF CONANGA 939 #

CONNEALY LEAD ON #
 JAYCEE OF CONANGA 233
 ER BROADCAST N305
 HA BLACKCAP LADY 6883

OX BOW RIGHT TIME 338-4262
 R M BLACKBIRD 012



CED	BW	WW	YW	Milk	SC	Doc
+7	+1.3	+51	+98	+25	+9.5	+18
CW	Marb	REA	\$W	\$F	\$B	Dam Production
+47	+0.81	+0.75	53.79	57.79	144.08	2 WR 100
Act. BW	Act. WW	205 wt.	NR	Adj. Sale Wt	ADG	Act. SC
95	720	669	105	1370	4.44	35

Top 10% \$B



Lot 61



Lot 63

63

RMF Heritage 63D

Bull Reg. 18712210 Tattoo: 63D DOB: 03/30/16

S A V HERITAGE 6295#
 RMF HERITAGE 637
 R M F BLACKBIRD 637#

HA 3540 DIRECTION 9500
 CM FOREVER LADY Z9405
 CM FOREVER LADY 9405 #

CAR DUKE 104 #
 S A V BLACKCAP MAY 4136
 OX BOW RIGHT TIME 338-4262
 R M BLACKBIRD 012
 HA FUTURE DIRECTION 3540
 HA BLACKBIRD 5576
 SITZ NEW DESIGN 458N #
 R M F FOREVER LADY 405



CED	BW	WW	YW	Milk	SC	Doc
+2	+2.3	+54	+91	+29	+8.1	+3
CW	Marb	REA	\$W	\$F	\$B	Dam Production
+32	+0.48	+0.42	63.52	47.7	109.36	2 WR 107
Act. BW	Act. WW	205 wt.	NR	Adj. Sale Wt	ADG	Act. SC
88	740	741	117	1451	4.85	36

Nice docile bull with the length, thickness, and volume of a cow maker



Lot 64

61

RMF Cowboy 61D

Bull Reg. 18712212 Tattoo: 61D DOB: 03/02/16

CONNEALY CONSENSUS 7229#
 S A V COWBOY 4874
 S A V EMBLYNETTE 7545

RMF HERITAGE 9304
 RMF LADY GRACE Z57
 R M F LADY GRACE 517

CONNEALY CONSENSUS #
 BLUE LILLY OF CONANGA 16

S A V NET WORTH 4200 #
 S A V EMBLYNETTE 7260 #

S A V HERITAGE 6295 #
 N P FOREVER LADY 304 #

CONNEALY LEAD ON #
 A A R LADY GRACE 337 #



CED	BW	WW	YW	Milk	SC	Doc
+6	+2.3	+57	+95	+28	+1.99	+20
CW	Marb	REA	\$W	\$F	\$B	Dam Production
+39	+0.58	+0.6	63.89	52.4	121.12	1 WR 111
Act. BW	Act. WW	205 wt.	NR	Adj. Sale Wt	ADG	Act. SC
96	762	707	111	1390	4.31	36.5

Long and thick quartered bull. Dam is an up and coming cow with great pedigree

62

RMF Duty Free 62D

Bull Reg. 18712211 Tattoo: 62D DOB: 03/17/16

R B ACTIVE DUTY 010
 APEX DUTY FREE 283
 APEXETTE RACHEL 1098

SITZ NEW DESIGN 458N #
 CM FOREVER LADY 9110
 N P FOREVER LADY 0110 #

LCC NEW STANDARD #
 B A LADY 6807 305

WMR HERO 829
 APEXETTE RACHEL 8844 #

BON VIEW NEW DESIGN 1407 #
 SITZ ELLUNAS ELITE 3308

N P SITZ TRAVELER 9437
 N P FOREVER LADY 901 #



CED	BW	WW	YW	Milk	SC	Doc
+5	+3	+56	+106	+29	+1.54	+19
CW	Marb	REA	\$W	\$F	\$B	Dam Production
+28	+0.58	+0.14	53.93	77.83	108.55	5 WR 99
Act. BW	Act. WW	205 wt.	NR	Adj. Sale Wt	ADG	Act. SC
95	722	682	107	1349	4.29	36.5

64

RMF Black Leather 64D

Bull Reg. 18712209 Tattoo: 64D DOB: 03/15/16

APEX FOCUS 053
 APEX BLACK LEATHER 718
 APEXETTE WINGINA 4062

HA RELAY 8023
 CM FOREVER LADY Z650
 C M FOREVER LADY 650 #

MYTTY IN FOCUS #
 APEXETTE DARKLADY 1002

APEX 450 WIDE TRACK 052
 APEXETTE WINGINA 1781

ER BROADCAST N305
 HA BLACKCAP LADY 6883

MORGANS DIRECTION 111 9901 #
 R M F FOREVER LADY 405



CED	BW	WW	YW	Milk	SC	Doc
+8	-.7	+61	+101	+32	+2.08	+17
CW	Marb	REA	\$W	\$F	\$B	Dam Production
+56	+0.6	+0.65	68.33	64.81	157.8	3 WR 103
Act. BW	Act. WW	205 wt.	NR	Adj. Sale Wt	ADG	Act. SC
84	753	721	113	1425	4.59	37

Three star calving ease. Bull with all the length, thickness, and muscle volume to become an excellent herd sire. Dam is from great pedigree, and is proving herself. This Black Leather son is top 3% \$B, \$W, 4% CW, Milk, and 10% WW, YW. This bull should make great females



65 *M* Bull Reg. 18712208 **RMF Harvester 65D** Tattoo: 65D DOB: 03/04/16

S A V HERITAGE 6295# CAR DUKE 104 #
 S A V BLACKCAP MAY 4136
 S A V HARVESTOR 0338 S A V NET WORTH 4200 #
 S A V EMBLYNETTE 7749 SAV EMBLYNETTE DIAMOND 6377 #
 R M F REALLY COOL 7242 HOLMAN COOL COUNTRY R535
 R M BEAUTY 242 #
 KM FANNY Y758 ALC NOBLEMAN N01N #
 K M FANNY 758 K M FANNY 558 #



CED	BW	WW	YW	Milk	SC	Doc
+7	+2.9	+53	+100	+26	+1.18	+8
CW	Marb	REA	\$W	\$F	\$B	Dam Production
+50	+13	+64	50.39	69.19	128.05	4 WR 110
Act. BW	Act. WW	205 wt.	NR	Adj. Sale Wt	ADG	Act. SC
93	725	662	104	1382	4.49	39.5

Long, thick made, and high gaining, this bull is from one of our best cow families



67 *M* Bull Reg. 18712206 **RMF Upward 67D** Tattoo: 67D DOB: 03/03/16

SITZ UPWARD 307R# CONNEALY ONWARD #
 SITZ HENRIETTA PRIDE 81M
 SHIPWHEEL UPWARD 2517
 SHIPWHEEL ENCHANTRESS 8184 HOLMAN 208 P44
 DR JMS APEX 053 L35
 HUMBERT ONWARD 6415 CONNEALY ONWARD #
 HUMBERT BLACKBIRD 4803
 CM FOREVER LADY 109 A A R STAMPEDE 3517
 N P LADY 0109 NORTH POLE LADY 601



CED	BW	WW	YW	Milk	SC	Doc
+14	+1	+50	+93	+25	+1.84	+19
CW	Marb	REA	\$W	\$F	\$B	Dam Production
+32	+33	+15	45.79	42.72	82.8	4 WR 92
Act. BW	Act. WW	205 wt.	NR	Adj. Sale Wt	ADG	Act. SC
80	635	578	91	1310	4.58	36

Four star calving ease Upward bull. Another sure fire sleep all night heifer bull! Never miss a tourney game with this one.

66 *M* Bull Reg. 18712207 **RMF Cowboy 66D** Tattoo: 66D DOB: 03/09/16

CONNEALY CONSENSUS 7229# CONNEALY CONSENSUS #
 BLUE LILLY OF CONANGA 16
 S A V COWBOY 4874 S A V NET WORTH 4200 #
 S A V EMBLYNETTE 7545 S A V EMBLYNETTE 7260 #
 R M F HERITAGE 9304 S A V HERITAGE 6295 #
 R M F BLACKCAP LADY Z426# N P FOREVER LADY 304 #
 R M F BLACKCAP LADY 426 A A R REALLY WINDY 10 #
 N P BLACKCAP LADY 805 #



CED	BW	WW	YW	Milk	SC	Doc
+7	+1.5	+47	+76	+25	+2.08	+17
CW	Marb	REA	\$W	\$F	\$B	Dam Production
+26	+64	+41	60.58	39.16	107.94	3 WR 109
Act. BW	Act. WW	205 wt.	NR	Adj. Sale Wt	ADG	Act. SC
93	726	686	108	1350	4.27	38.5

Nice Cowboy son. Dam of this bull is a proven Pathfinder cow

68 *M* Bull Reg. 18720720 **RMF Tour Of Duty 68D** Tattoo: 68D DOB: 03/05/16

WERNER WAR PARTY 2417# CONNEALY ONWARD #
 BAAR USA LADY JAYE 489
 R B TOUR OF DUTY 177
 B A LADY 6807 305
 VERMILION DATELINE 7078 #
 G D LADY HI FLYER 302
 R M F LEAD ON 5507 CONNEALY LEAD ON #
 N P AALEEN 305 #
 R M F QUEEN Z9331 VERMILION DUTCHMAN N813
 R M QUEEN 9331 R M QUEEN 331



CED	BW	WW	YW	Milk	SC	Doc
+3	+3.5	+55	+98	+24	+1.55	+25
CW	Marb	REA	\$W	\$F	\$B	Dam Production
+42	+41	+75	43.53	60.29	134.41	2 WR 106
Act. BW	Act. WW	205 wt.	NR	Adj. Sale Wt	ADG	Act. SC
98	722	676	106	1337	4.22	36

Calving Ease Ratings – CE

- ★★★★ - Excellent calving ease, use on first calf heifers.
- ★★★ - Superior CE works well with most heifers.
- ★★ - Moderate CE, recommended for use mostly on cows.
- ★ - Recommended for cows only.



69 *RMF* Bull Reg. 18712205 Tattoo: 69D DOB: 03/09/16

R B ACTIVE DUTY 010
 APEX DUTY FREE 283
 APEXETTE RACHEL 1098
 APEX BLACK LEATHER 718
 KM FANNY Z9649
 KM FANNY 9649

LCC NEW STANDARD #
 B A LADY 6807 305
 WMR HERO 829
 APEXETTE RACHEL 8844 #
 APEX FOCUS 053
 APEXETTE WINGINA 4062
 HOLMAN COOL COUNTRY R535
 K M FANNY 649 #



CED	BW	WW	YW	Milk	SC	Doc
+1	+2.8	+57	+106	+28	+2.34	+13
CW	Marb	REA	\$W	\$F	\$B	Dam Production
+40	+1.1	+27	53.24	76.4	110.16	2 WR 113
Act. BW	Act. WW	205 wt.	NR	Adj. Sale Wt	ADG	Act. SC
89	738	696	109	1393	4.48	39.5

Eye catching bull from a high producing Black Leather daughter. Top 10% WW, YW



70 *RMF* Bull Reg. 18712204 Tattoo: 70D DOB: 03/11/16

R B ACTIVE DUTY 010
 APEX DUTY FREE 283
 APEXETTE RACHEL 1098
 A A R NEW DESIGN 4106
 R M F PEARL 744
 R M PEARL 111

LCC NEW STANDARD #
 B A LADY 6807 305
 WMR HERO 829
 APEXETTE RACHEL 8844 #
 BON VIEW NEW DESIGN 878 #
 A A R IMPERIAL QUEEN 75
 APEX TRENDSON 267
 2134 FAR PEARL 8035



CED	BW	WW	YW	Milk	SC	Doc
+5	+2.1	+51	+94	+25	+1.05	+19
CW	Marb	REA	\$W	\$F	\$B	Dam Production
+30	+2.4	+2	49.24	58.1	95.59	8 WR 101
Act. BW	Act. WW	205 wt.	NR	Adj. Sale Wt	ADG	Act. SC
85	714	663	104	1340	4.28	35

Attractive bull from another proven older cow. Dam has several daughters in our herd

72 *RMF* Bull Reg. 18712265 Tattoo: 72D DOB: 03/28/16

S A V IRON MOUNTAIN 8066#
 S A V MOUNTAIN TIME 1695
 S A V ELBA 917

TC GRIDIRON 258 #
 S A V MADAME PRIDE 3249
 LEACHMAN RIGHT TIME #
 S A V ELBA 1094

VERMILION COWCUTTA U349
 KM BLACKCAP LADY Y9205
 KM BLACKCAP LADY 9205

HARB COWCUTTA 776 J H
 VERMILION HEIRESS 9078
 K M MORGANS DIRECTION 6608
 N P BLACKCAP LADY 0205



CED	BW	WW	YW	Milk	SC	Doc
+3	+1.6	+47	+83	+25	+9.5	+5
CW	Marb	REA	\$W	\$F	\$B	Dam Production
+35	+1.15	-0.7	50.94	38.88	93.08	2 WR 111
Act. BW	Act. WW	205 wt.	NR	Adj. Sale Wt	ADG	Act. SC
94	692	675	101	1215	3.61	35

73 *RMF* Bull Reg. 18719331 Tattoo: 73D DOB: 04/07/16

S A V IRON MOUNTAIN 8066#
 S A V MOUNTAIN TIME 1695
 S A V ELBA 917

TC GRIDIRON 258 #
 S A V MADAME PRIDE 3249
 LEACHMAN RIGHT TIME #
 S A V ELBA 1094

K M MORGANS DIRECTION 6608
 KM BLACKCAP LADY 9205
 N P BLACKCAP LADY 0205

MORGANS DIRECTION 111 9901 #
 N P BLACK LADY 2605
 N P SITZ TRAVELER 9437
 N P BLACKCAP LADY 805 #



CED	BW	WW	YW	Milk	SC	Doc
+12	-.4	+43	+72	+23	+1.16	+11
CW	Marb	REA	\$W	\$F	\$B	Dam Production
+22	+.57	-.19	49	27.65	89.24	6 WR 100
Act. BW	Act. WW	205 wt.	NR	Adj. Sale Wt	ADG	Act. SC
82	584	589	88	1260	4.57	35

Four star calving ease Mountain Time heifer bull. Sleep. All. Night.

Volume Discount

We are offering a discount to our volume buyers. Purchase 4 bulls for a 4% discount. Purchase 5 bulls for a 5% discount, etc. We will offer a maximum discount of 10% for buyers purchasing 10 or more bulls.



Whitewater, MT 59544



Kate Ivins

RMF
Lot 74

RMFCowboy 74D

74 *RMF*

RMF Cowboy 74D

Bull Reg. 18712202 Tattoo: 74D DOB: 03/08/16

CONNEALY CONSENSUS 7229#
S A V COWBOY 4874
S A V EMBLYNETTE 7545
MOHNEN LONG DISTANCE 1639
WC LONG DISTANCE 2134 019
WC UPWARD 019 664
CONNEALY CONSENSUS #
BLUE LILLY OF CONANGA 16
S A V NET WORTH 4200 #
S A V EMBLYNETTE 7260 #
MOHNEN BRUSHPOPPER 295 #
BALDRIDGE BLACKBIRD M565
SITZ UPWARD 307R #
WILLOWCREEKTRADITION 664 2



CED	BW	WW	YW	Milk	SC	Doc
+6	+1.4	+57	+96	+26	+1.54	+21
CW	Marb	REA	\$W	\$F	\$B	Dam Production
+29	+0.69	+0.66	63.15	55.17	108.56	3 WR 108
Act. BW	Act. WW	205 wt.	NR	Adj. Sale Wt	ADG	Act. SC
78	709	667	105	1434	4.92	37.5

Four star calving ease bull. Small headed and clean fronted, this bull packs amazing length and loaded with volume and muscle. High gaining, and big scrotal, this bull has it all.



Shane & Vicki Schwenke
Top Bull Buyer

75 *RMF*

RMF Harvester 75D

Bull Reg. 18712201 Tattoo: 75D DOB: 03/09/16

S A V HERITAGE 6295#
S A V HARVESTOR 0338
S A V EMBLYNETTE 7749
HA RELAY 8023
KM FANNY Z758
K M FANNY 758
CAR DUKE 104 #
S A V BLACKCAP MAY 4136
S A V NET WORTH 4200 #
SAV EMBLYNETTE DIAMOND 6377 #
ER BROADCAST N305
HA BLACKCAP LADY 6883
ALC NOBLEMAN N01N #
K M FANNY 558 #



CED	BW	WW	YW	Milk	SC	Doc
-1	+4	+60	+106	+24	+1.56	+16
CW	Marb	REA	\$W	\$F	\$B	Dam Production
+49	+0.64	+0.24	57.22	67.65	132.88	2 WR 101
Act. BW	Act. WW	205 wt.	NR	Adj. Sale Wt	ADG	Act. SC
91	698	660	104	1308	4.18	37

Top 10% in WW, YW, CW, \$F. Nice bull that will fix those cows right up



F. Anderson Ranch
Volume buyer



76 *M* RMF Eliminator 76D

Bull Reg. 18712200 DDC Tattoo: 76D DOB: 03/27/16

S A V ELIMINATOR 9105
PEAK DOT ELIMINATOR 756Z
BARDOLIA OF PEAK DOT 945U

RITO 707 OF IDEAL 3407 7075
S A V ABIGALE 5646

MOHNEN DYNAMITE 1356 #
BARDOLIA OF PEAK DOT 585K

SITZ NEW DESIGN 458N #
CM FOREVER LADY 9405#
R M F FOREVER LADY 405

BON VIEW NEW DESIGN 1407 #
SITZ ELLUNAS ELITE 3308
JR ROCK'N D AMBUSH 042L
N P LADY 0109



CED	BW	WW	YW	Milk	SC	Doc
+7	+1.5	+56	+96	+30	+1.02	+10
CW	Marb	REA	\$W	\$F	\$B	Dam Production
+41	+0.38	+0.49	69.25	50.51	113.51	6 WR 104
Act. BW	Act. WW	205 wt.	NR	Adj. Sale Wt	ADG	Act. SC
83	738	717	113	1415	4.62	35

Three star calving ease bull. Dam is a proven Pathfinder cow that has had all her heifers retained.

79 *M* RMF Mtn Track 79D

Bull Reg. 18712197 Tattoo: 79D DOB: 03/22/16

APEX WIDE TRACK 545
APEX MTN TRACK 7801
APEXETTE LUCY 6037

APEX 450 WIDE TRACK 052
APEXETTE BLACKCAP 1080 #

APEX MTN FRONT 044
APEXETTE LUCY 1064

RMF HERITAGE 9304
RMF SAPPHIRE LADY Z513
R M F SAPPHIRE LADY 513

S A V HERITAGE 6295 #
N P FOREVER LADY 304 #
CONNELLY LEAD ON #
N P SAPPHIRE 379



CED	BW	WW	YW	Milk	SC	Doc
+6	+2.3	+56	+93	+28	+1.85	+15
CW	Marb	REA	\$W	\$F	\$B	Dam Production
+29	+0.24	+0.37	68.99	52.96	95.83	1 WR 105
Act. BW	Act. WW	205 wt.	NR	Adj. Sale Wt	ADG	Act. SC
83	682	668	105	1348	4.53	37.5

80 *M* RMF Duty Free 80D

Bull Reg. 18712266 Tattoo: 80D DOB: 03/04/16

R B ACTIVE DUTY 010
APEX DUTY FREE 283
APEXETTE RACHEL 1098

LCC NEW STANDARD #
B A LADY 6807 305

WMR HERO 829
APEXETTE RACHEL 8844 #

APEX BLACK LEATHER 718
CM FOREVER LADY 037
C M FOREVER LADY 8650

APEX FOCUS 053
APEXETTE WINGINA 4062
MYTTY IN FOCUS #
C M FOREVER LADY 650 #



CED	BW	WW	YW	Milk	SC	Doc
+8	-0.1	+54	+100	+27	+1.61	+14
CW	Marb	REA	\$W	\$F	\$B	Dam Production
+35	+0.38	+0.19	58.68	69.87	111.07	4 WR 100
Act. BW	Act. WW	205 wt.	NR	Adj. Sale Wt	ADG	Act. SC
82	720	656	103	1346	4.29	35

Four star calving ease, Duty Free son. Dam is an excellent Black Leather daughter. Great looking bull. Another nice heifer bull that should keep the night checks at a minimum.



Not For Sale

Will Stuart Keller

Bull Reg. Math Grand #7 Birth Date: 10/29/16

STUART KELLER
WADE KELLER
COLEEN OBLENDER KELLER
ROBERT MATH
TASHA MATH KELLER
RENA DEMONTIGNY MATH

Act. BW	1/9/17 Wt.	BW EPD	WW EPD	Milk
7 lb. 13 oz.	12 lb. 8 oz.	+1.2	+73	+26

Delivery

*Free delivery within MT and
out of state at cost.*



Whitewater, MT 59544

Future Reference Sire 2018



S A V Country Road 5027



Whitewater, MT 59544

Reference Sire SAV Country Road 5027

Bull Reg. 18258161 2/19/15
 RITO 707 OF IDEAL 3407 7075 R R RITO 707 #
 IDEAL 3407 OF 1418 076
S A V RENOWN 3439
 S A V BLACKCAP MAY 4136 S A V 8180 TRAVELER 004 #
 S A V MAY 2397 #
 S A V IRON MOUNTAIN 8066 # TC GRIDIRON 258 #
 S A V MADAME PRIDE 3249
S A V EMBLYNETTE 1217 #
 S A V EMBLYNETTE 3325 S A F 598 BANDO 5175 #
 S A V EMBLYNETTE 7319 #

CED	BW	WW	YW	Milk	
+2	+3.2	+63	+105	+32	
Marb	REA	Fat	\$W	\$F	\$B
+0.26	+0.50	+0.051	66.80	63.58	127.15

SAV Country Road 5027 was a standout at the 2016 Schaff sale, and looks to be a top herd sire prospect in the country. He is an attractive son of Renown 3439. He's a super-fronted bull with length, thickness, expressive muscle shape and superior structure. His productive dam records a weaning ratio of 3/110, on her way to Pathfinder status. She is the #1 marbling and third top weaning female in the entire 2012 SAV calf crop. We're overwhelmed with excitement, and look for sons in 2018.

Sale Notes





Rena, Debbie & Tom

Sue, Eunice, Gale & Lu

*Olsen Grain & Livestock
Door Prize Winner*



MATH

Thanks for coming!



11096 N Forks Road
Whitewater, MT 59544

FIRST CLASS

US Postage
Paid
Ballyhoo Printing
Hobson, MT

9th Annual
Production Sale

Monday • APRIL 3, 2017 • 1:00 P.M.

Milk River Pavilion • Hwy 2 East, Malta, MT

www.rmathfarms.com



View catalog & video at
Northern Livestock Video
www.rmathfarms.com
www.billpelton.com