

Redland Angus  
Kendrick & Sharon  
Box 168, Manderson, WY 82432  
307-347-2270  
email: angus@rtconnect.net  
www.redlandangus.com

Address Service Requested

The type of cows that work in a true range environment.



110 of the thickest, easiest fleshing calving ease bulls  
you will find anywhere sell Saturday, January 16.

I would like to receive your catalog. WAR  
My address is (must be complete address):

Name of Ranch: \_\_\_\_\_

Name: \_\_\_\_\_

Address: \_\_\_\_\_

City: \_\_\_\_\_ State: \_\_\_\_\_ Zip: \_\_\_\_\_

Phone: \_\_\_\_\_

or email us at angus@rtconnect.net

I would like to receive a video on the sale bulls  
DVD \_\_\_\_\_

Spring Calving Cows on Summer Range.  
Calves pictured at 5 months of age.

Saturday

January 16, 2016

1:00 p.m. MST

110 Bulls Sell

Redland  
ANGUS



RANGE CALVED  
RANGE RAISED®

Buffalo Livestock Auction  
Buffalo, Wyoming

CALVING EASE GENETICS

A Ranch's Profit Starts With A Live Calf



View the sale on the Internet at  
[www.cattleusa.com](http://www.cattleusa.com).  
Contact Northern Livestock  
Video Auction at 1-866-616-5035  
for bidding information.



All Bulls Carcass Ultra-  
Sounded & tested  
negative for PI BVD.  
Bulls wintered free until April 1.



# Calving Ease Bulls Raised the Commercial Man's Way



**GDAR Game Day 449**  
27 Sons Sell.

GDAR Game Day 449 sires progeny in an eye appealing package with thickness, length, volume and hindquarter. In the same mold as Emblazon 854E, he is a consistent breeding bull that sires calving ease and performance in a moderate framed package. He sires efficient, excellent uddered daughters, that make a living on grass.



**Cole Creek Cedar Ridge 1V**  
13 Sons Sell.

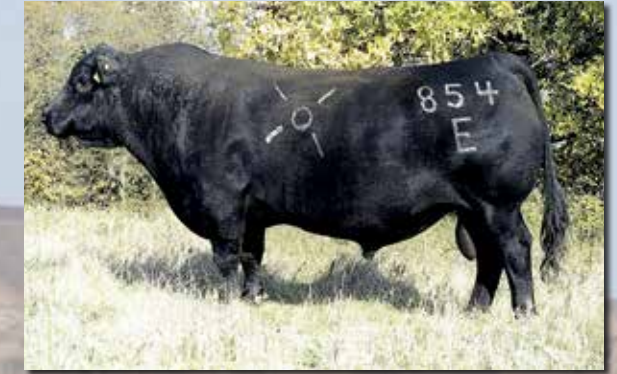
Cedar Ridge is a total outcross sire for our program. He has worked very well in our herd siring the same type & kind that we like. We plan on using Cedar Ridge extensively in the future. Excellent calving ease & Calf vigor. His daughters will be moderate framed and easy fleshing with good udders.



**Papa Forte 1921**  
6 Sons Sell.

We have brought Forte back in to our program for the type and kind of cattle that he produces. Excellent calving ease and calf vigor, moderate framed "easy fleshing females with good fertility". TRUE GRASS BASED GENETICS.

## A Ranch's Profit Starts With A Live Calf



**OCC Emblazon**  
9 Sons Sell.

OCC Emblazon 854E is recognized as the cow efficiency leader in the angus breed. Over 90 bulls sell carrying his influence. Daughters are easy fleshing with superb udders. He is a dominant, uniform sire that combines big REA with calving ease & high \$EN & \$W.



**OCC Paxton 730P**  
33 Sons Sell.

A high volume, easy doing, big REA sire. This group of sons looks very strong. Paxton sires extra volume, muscle & fleshing ability along with a +36.09 \$EN score that reflects the efficiency his daughters are transmitting.



**Wulfs EXT 6106**  
18 Grandsons Sell.

Bulls like 6106 are what made the Angus cow so popular on the Western Range. Born in 1996, he is a tried and proven bull for siring daughters that have excellent fertility udder quality and longevity with very good feet and legs.

**F**ollowing the same philosophy of the summer calving Range Calved - Range Raised<sup>®</sup> program. All spring cows calve out on their own with a focus on lighter birthweight genetics. They are bred to sire moderate framed, heavy muscled, good boned progeny that thrive on native forage and practical management to lower your production costs and increase your profitability.

### COST EFFICIENCY = PROFITABILITY

**F**or a commercial operation to generate a high level of cost efficient production, it must have a cow herd which will cope with fluctuating nutritional conditions and still be productive without requiring high levels of supplemental feeding. A low maintenance, productive cow herd that can efficiently utilize available resources is the key. This is a function of body type and not EPD's or other numbers.

All cattle do well when fed grain as it is an environment providing a constant level of ideal nutrition. Not all cattle do well in a grass-based environment with fluctuating levels of nutrition. Any stand alone commercial breeding operation targeting maximum sustainable net profit is virtually a total grass based production system. At Redland Angus we are raising our cattle in the same method most of our commercial customers do and have found that only generations of cows bred to meet these requirements stand the test.

A commercial producers net profit is tied to their herds ability to efficiently utilize what grass is available throughout the year. The same is true for us and the cattle we produce and offer for sale.