



# Ox Bow Ranch

Wolf Creek, Montana

## Efficient Maternal Angus Excelling in a Demanding Environment

Sale Time  
**1:00 pm MST**

*Annual Registered Angus Bull Sale*

**Wednesday, March 5, 2014**

**120** Yearling Angus  
Range Bulls



# Ox Bow Ranch

Chris and Nora Hohenlohe

P.O. Box 215 • Wolf Creek, MT 59648  
oxbow@3riversdbs.net

Hello Everyone,

Welcome to our annual ranch production sale. I want to thank past customers for your continued support and confidence in our program. We appreciate your business and hope you can join us again this year. For those of you new to our program, I look forward to meeting you!

I realize you can buy bulls from many sellers, and I really appreciate you taking the time to evaluate our cattle. Our program isn't about creating the biggest numbers. We remain totally committed to the production of optimum angus genetics that result in the highest possible return for the commercial cowman: moderation, fleshing ability, balance, and function in a real range environment. Our focus remains on tackling the input side of the equation when it comes to total profitability. Our combination of high accuracy, range-proven genetics and strong pedigree background result in added consistency and predictability. We rely on our cow herd's strong Emulation influence to add structural durability, strong fertility under tough range conditions, and superior udder quality. This combination of traits results in extended herd longevity. We continue to select genetic combinations that produce balanced-trait cattle with the ability to improve your bottom line. I firmly believe that our genetics will increase pounds, improve efficiency, reduce your labor and input costs, and provide you with great replacement females.

Our young, all ranch-raised cow herd has produced one of the strongest genetically balanced and uniform set of breeding bulls we've ever offered. They offer a tremendous balance of fertility, efficiency, maternal, performance and carcass value. These bulls will produce cattle that are moderately framed, easy fleshing, and super efficient on grass. We develop the bulls on a feed ration that ensures properly conditioned, sound individuals that will give you years of service.

Once again, George Marcy is on board to help with the management of the sale. George will be arriving several days prior to the sale. He and I will both be on hand to take your calls and help you evaluate our offering prior to sale day. I also encourage you to make plans to visit us in the days prior to the sale to check out our cow herd. Give me a call and I will be here to take you through the herd and talk cows.

We hope to see you at our sale on March 5th. If you are unable to attend the sale due to time, weather, or distance, please remember you can bid live on the phone on Northern Livestock Video Auction or Bill Pelton's conference call. Please see details on the next page. Remember to check our website prior to the sale for video, additional data updates and sale order. Give us a call. Buy with confidence; we stand behind our cattle. I trust you will find great genetic value for your dollar spent.

If I can be of any assistance, I can be reached at the above phone numbers or e-mail address. Hope to see you at the sale!



*Chris & Nora Hohenlohe and family*



*Anne and Ken Cook*

Best regards,

Ken Cook  
Manager, Ox Bow Ranch

Ken Cook  
406-235-4281 home  
406-431-7381 cell

O  
X

[www.OxBowRanchAngus.com](http://www.OxBowRanchAngus.com)



# Ox Bow Ranch

**Sale Day Phone:**  
Ken 406-431-7381 or  
Marcy Livestock 308-430-2005  
Sale Barn 406-235-9069

**Ken Cook**  
406-235-4281 home  
406-431-7381 cell

## March 5, 2014

Join us at 12:00 noon for a CAB lunch  
SALE at 1:00 P.M.

For Updated Performance Information go to  
[www.OxBowRanchAngus.com](http://www.OxBowRanchAngus.com)

### 120 Yearling Angus Range Bulls

**Auctioneer:** Roger Jacobs 406-698-7686

**Sale Manager:** Marcy Livestock Services  
George Marcy . . . . .cell 308-430-2005

**Livestock Press Representatives:**

- Kurt Kangas - American Angus Assoc . . . 661-706-2041
- John Goggins - Western Ag Reporter . . . 406-698-4159
- Jerry Gliko - Western Livestock Journal . . 406-860-3181
- Bill Pelton - Special Assignment . . . . . 406-671-5100



### BID LIVE ON THE PHONE ON NLVA

Be sure to register before sale day to bid.

*If you are unable to attend the Ox Bow Sale,  
it will be broadcast live at [www.cattleUSA.com](http://www.cattleUSA.com)*



Northern Livestock Video Auction will be carrying the sale live on the internet at [www.cattleUSA.com](http://www.cattleUSA.com). You need to contact Northern Livestock Video at **1-866-616-5035**. You can then bid live on the phone

through Northern Livestock during the auction.

To view online catalog, pre-sale video and supplement sheets on sale order, weights and scrotals, go to [www.northernlivestockvideo.com](http://www.northernlivestockvideo.com) and click on the Ox Bow Sale. Contact Ken Cook if you would like a DVD of the bulls.

#### GUARANTEED BID PROGRAM-ABSENTEE BIDDING

A 100% satisfaction guarantee for cattle purchased in your absence is offered by Ox Bow Ranch if Ken Cook or George Marcy assists you with your purchases.

## Marcy Livestock Services

**George Marcy**  
Cell: 308/430-2005

### Ox Bow Ranch...Efficient Maternal Angus Excelling in a Demanding Environment

Plan now to be on hand to view this exceptional set of bulls for yourself. Over 90 of these bulls are suitable for use on heifers.

Headlined by the progeny of GDAR Game Day 449 & SAV Final Answer 0035, two of the top \$W bulls of the breed, plus a deep offering of Emblazon genetics insures that you are buying bulls bred to be highly efficient, easy doing cattle that can meet the challenges of a tough environment.

The genetics at Ox Bow are bred deep in the traits of low birth-weight Angus cattle with strong performance that will leave a top female. If you attend the sale you will see that these cattle have to be athletes to run on the steep, dry, mountain terrain that is their summer pasture. They are demanded to be good on their feet & legs.

These moderate framed, deep ribbed, easy fleshing bulls will sire efficient, high capacity, easy doing cattle with excellent udders. This is one of the best uddered cowherds you will find anywhere. For your convenience you can participate with Northern Livestock Video or on the phone if you cannot make it sale day.

Please give me a call if I can help you with your selections in any way. I will be there Sunday March 2nd through the sale.

George Marcy, Marcy Livestock Services Cell: 308/430-2005

**Sale Location:** Paved road to the sale site! The sale site is conveniently located at Ox Bow Ranch's Sentinel Rock Ranch just off I-15 at Wolf Creek then 2 miles east on Holter Lake Frontage Road. See map below.

**Bids:** For buyers unable to attend the sale we will offer a satisfaction guarantee on your purchases. Contact Ken Cook or George Marcy for details.

**Retained Ownership:** Ox Bow Ranch is retaining 1/3 revenue sharing semen interest in all bulls. Full possession sells on all bulls.

**Terms and Conditions:** The cattle will sell under the terms & conditions recommended by the American Angus Association. All bulls with potential defect carrier pedigrees have been tested free.

**Fertility:** All bulls were palpated, semen tested and scrotal measured by Dr. Clint Hilt.

**Herd Health:** All cattle have had a complete vaccination program prescribed by Dr. Clint Hilt. All bulls were vaccinated and received pour-on last fall. Bulls have been vaccinated for footrot, we would recommend a yearly booster shot be given. **All bulls have tested negative for persistent BVD infection.**

**Delivery:** Free delivery up to 500 miles to central points with total purchases of \$4000 or more and up to 800 miles to central points on purchases of \$7500 or more. Bulls will be delivered as soon as arrangements can be made. \$50 discount on bulls picked up sale day or the following week.

**Wintering Arrangements:** If you desire, bulls will be hauled back to the Broken O feedlot. Feed will be billed to you at a rate of no more than \$3.50 per day. Please make arrangements to pick up bulls from the feedlot prior to 4/15/14. **Bulls are kept at buyer's risk. Please make arrangements when settling up on your purchases.**

**Performance data:** All performance data will be available sale day and will also be posted on our web site at **www.OxBowRanchAngus.com** as soon as it becomes available. This includes ultrasound, final weights and scrotals.

Current EPDs can be viewed at [www.angus.org](http://www.angus.org)

**Volume discounts:** We will offer volume discounts starting with 6 bulls at 6%, up to 10% on 10 bulls or more.

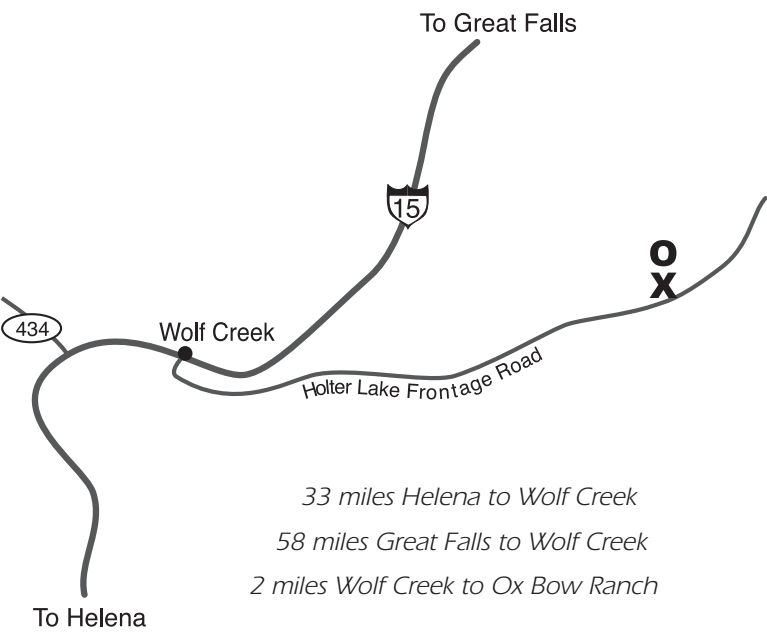
**Liability:** All persons attending this sale do so at their own risk and responsibility without liability on the part of the ranch owners or their employees.

**Cattle Inspection:** Cattle are available for inspection prior to the sale at the Broken O feedlot located 10 miles west of Simms, MT on Hwy 21, then 1 mile north across the river. Cattle will arrive at the sale site on March 2.

**Accommodations:**

Numerous nice motels are available in Helena (35 miles south) & Great Falls (58 miles north)  
Comfort Suites, Helena . . . . . 406-495-0505  
Holiday Inn Express, Helena . . . . . 406-422-7500  
O'Haire Motor Inn, Great Falls . . . . . 406-454-2141  
Heritage Inn, Great Falls . . . . . 406-761-1900

Both Helena and Great Falls are served by Delta, United Airlines and Alaska Airlines



Discounted rooms available at  
**Comfort Suites in Helena, \$90/Room**  
Make reservations by 2/24/14  
Phone 406-495-0505

## Sale Day Conference Call

 Our goal is to have you in the seats but if you can't make it on sale day, we're fixin' to get you "on the line!"

**Easy as 1-2-3**

- 1. In Advance-** you call the breeder to pre-register your buyer number
- 2. Prior To-** the sale you will receive an email or call from the breeder with the toll free conference call number, pin number, and instructions
- 3. Sale Day-** at or during the sale time, you call the toll free number and enter your pin to be placed on the call.

---

 **Pelton Limestone**  
Marketing & Consulting  
[www.billpelton.com](http://www.billpelton.com)  
bill@billpelton.com | 406-671-5100

 OFFERING AMERICAN LIVE STOCK INSURANCE SERVICES



# **Bulls designed to be more profitable!**

## **American Angus Association \$Value Indexes**

**\$Values** are multi-trait selection indexes expressed in dollars per head, to assist commercial beef producers by adding simplicity to genetic selection decisions. A \$Value has meaning only when used in comparison to the \$Value of another animal. For example, just as with EPDs, variation in \$Values between animals indicates average expected differences in the relative value of progeny if random mating is assumed and the calves are exposed to the same environment.

### **How do I use them?**

\$Values should be used to complement the criteria that producers already use when selecting bulls.

The \$Values are not designed to be driven by a single trait, as an index is multi-trait by design. These selection tools are the result of the application of industry-relevant market values to Angus genetics for preweaning, feedlot, and carcass merit.

The \$W, \$F, \$G and \$B values on individual animals and the Sire Evaluation Report may be viewed at [www.angus.org](http://www.angus.org).

**Calving Ease Direct (CED):** expressed as a difference in percentage of unassisted births, with a higher value indicating greater calving ease in first calf heifers. It predicts the average difference in ease with which a sire's calves will be born when he is bred to first-calf heifers

**Cow Energy Value (\$EN):** an index expressed in dollars savings per cow per year, assesses differences in cow energy requirements as an expected dollar savings difference in daughters of sires. A larger value is more favorable when comparing two animals (more dollars saved on feed energy expenses). Components for computing the cow \$EN savings difference include lactation energy requirements and energy costs associated with differences in mature cow size.

**Weaned Calf Value (\$W):** an index expressed in dollars per head, is the expected average difference in future progeny performance for preweaning merit. \$W includes both revenue and cost adjustments associated with differences in birth weight, weaning direct growth, maternal milk, and mature cow size.

**Feedlot Value (\$F):** an index expressed in dollars per head, is the expected average difference in future progeny performance for postweaning performance compared to progeny of other sires.

**Grid Value (\$G):** an index expressed in dollars per head, is the expected average difference in future progeny performance for carcass grid merit compared to progeny of other sires.

**Beef Value (\$B):** an index expressed in dollars per head, is the expected average difference in future progeny performance for postweaning and carcass value compared to progeny of other sires. The \$B value combines the contributions of \$F and \$G.

### **A big thank-you to everyone who has helped us through the years.**

#### **Special thanks:**

My ranch assistants Ivan Negri, Justin Scott and Dave Morgan for their huge part in the day to day operation of the ranch;

Nancy Phillips for her fine office assistance;

Dr. Clint Hilt for vet work, herd health consulting and fertility testing;

Russ & Barb Pepper for watching health on the bulls;

Dan Freeman and his crew at the Broken O for feeding the bulls;

Jeremy Roberts for clipping the bulls;

Dr. Maureen Dietz for carcass ultrasounding the bulls;

Chili OBrien's for preparing the lunch; and

Gerri and John Campbell and crew at Ballyhoo Printing for preparing a great sale catalogue.



**Ivan and Jennifer Negri**



**Justin and Rikell Scott and family**

Also thanks to all our friends and neighbors for their help on sale day and your friendship and support throughout the years.





**25  
Sons &  
Grandsons  
Sell**

**reference sire** **GDAR Game Day 449**  
 Calved 2/9/04 Reg. +14691231

A A R New Trend#  
**Boyd New Day 8005#**  
 S V F Forever Lady 57D

Tehama Band 207#  
**G D A R Miss Wix 474#**  
 G D A R Miss Wix 749

V D A R Shoshone 548#  
 Donna A A R 74  
 Leachman Right Time#  
 S V F Forever Lady 1128

Band 116 of Ideal 2118 7174#  
 Tehama Entella H501  
 Traveler 1148 G D A R#  
 LT Miss Wix 2221 G D A R

BW	WW	Milk	YW	Scrotal	Marb	RE	Fat
-0.3	+51	+28	+95	+0.70	+0.50	+1.00	+0.070
CED	SEN	\$W	SF	SG	SB		
+10	23.41	72.55	40.98	37.74	39.87		

A highly proven calving ease sire producing cattle that are very similar in type to our Emblazon bred cattle. Moderate mature size with added fleshing ability and quality muscle expression. Transmits some of the highest fertility and udder quality in the breed. Records the number one \$W value in the breed along with a high \$EN indicating easy doing, low maintenance cattle.



**Lot 1**

**2** **Ox Bow Game Day 3229**  
 Tag 1120 Calved 1/27/13 Reg. 17663843

**Bull** Boyd New Day 8005#  
**GDAR Game Day 449#**  
 G D A R Miss Wix 474#

A A R New Trend#  
 S V F Forever Lady 57D  
 Tehama Band 207#  
 G D A R Miss Wix 749

S A V Final Answer 0035#  
**Ox Bow Miss Wix 1120**  
 Miss Wix 9030 OF Mc Cumber#

Sitz Traveler 8180#  
 S A V Emulous 8145  
 Sinclair Extra 4X13#  
 Miss Wix 2027 of Mc Cumber#

CED	BW	WW	Milk	YW	\$W	\$B	Dam Production
+10	-0.3	+51	+26	+91	35.38	61.17	1 WR 100

Indiv. Performance	
Birth Wt	73
205 Wt	642
365 Wt	1343
IMF	3.49/102
REA	14.8/104
Rib Fat	0.28/97

- Recommended for heifers or cows
- Third dam is our foundation Miss Wix female and 6th generation Pathfinder
- Moderate framed with a tremendous amount of natural thickness

**1** **Ox Bow Game Day 3242**  
 Tag 1135 Calved 1/24/13 Reg. 17663854

**Bull** Boyd New Day 8005#  
**GDAR Game Day 449#**  
 G D A R Miss Wix 474#

Sinclair Extravagant 6X7  
**Ox Bow Ever Entense 1135**  
 Ox Bow Ever Entense 939

A A R New Trend#  
 S V F Forever Lady 57D  
 Tehama Band 207#  
 G D A R Miss Wix 749

N Bar Emulation EXT#  
 Sinclair Lady 2P30 8146  
 S A V Final Answer 0035#  
 Ox Bow Ever Entense 7157

CED	BW	WW	Milk	YW	\$W	\$B	Dam Production
+10	+0.5	+58	+27	+100	38.02	62.75	1 WR 111

Indiv. Performance	
Birth Wt	78
205 Wt	718
365 Wt	1302
IMF	2.88/84
REA	14.6/103
Rib Fat	0.40/138

- Recommended for heifers or cows
- Moderate framed dam is our highest capacity 3-year old
- Great birth to yearling spread and carcass values
- Moderate and very clean made with a tremendous amount of volume



**Miss-Wix-2027-of-Mc-Cumber**  
 Foundation Dam behind Lot 2

### 3 Ox Bow Game Day 3206

<b>Bull</b>		Tag 146	Calved 1/29/13	Reg. 17663832			
Boyd New Day 8005#	A A R New Trend#	Indiv. Performance					
<b>GDAR Game Day 449#</b>	S V F Forever Lady 57D	Birth Wt	<b>78</b>				
G D A R Miss Wix 474#	Tehama Band 207#	205 Wt	<b>660</b>				
	G D A R Miss Wix 749	365 Wt	<b>1276</b>				
Garret's Nationwide 8001	O C C Emblazon 854E#	IMF	<b>3.13/92</b>				
<b>Ox Bow Blackcap Lady 146</b>	Boyd Forever Lady 8003	REA	<b>14.6/103</b>				
Ox Bow Blackcap Lady 273	G A R Example 3204#	Rib Fat	<b>0.17/59</b>				
	Gdar Blackcap Lady 6308	Dam Production					
CED	BW	WW	Milk	YW	\$W	\$B	
<b>+8</b>	<b>+1.1</b>	<b>+48</b>	<b>+23</b>	<b>+87</b>	<b>31.29</b>	<b>49.79</b>	<b>1 WR 102</b>

- Recommended for heifers or cows
- Phenotypically ideal grand dam is the great grand dam of last year's high selling bull
- Very well balanced bull with a tick more frame



### 6 Ox Bow Game Day 3333

<b>Bull</b>		Tag 7139	Calved 1/30/13	Reg. 17663907			
Boyd New Day 8005#	A A R New Trend#	Indiv. Performance					
<b>GDAR Game Day 449#</b>	S V F Forever Lady 57D	Birth Wt	<b>92</b>				
G D A R Miss Wix 474#	Tehama Band 207#	205 Wt	<b>618</b>				
	G D A R Miss Wix 749	365 Wt	<b>1138</b>				
O C C Emblazon 854E#	D H D Traveler 6807#	IMF	<b>2.93/86</b>				
<b>Ox Bow Manor 7139</b>	Dixie Erica of CH 1019	REA	<b>13.9/96</b>				
Ox Bow Manor 5121	N Bar Emulation EXT#	Rib Fat	<b>0.28/88</b>				
	Sitz Manor 3609	Dam Production					
CED	BW	WW	Milk	YW	\$W	\$B	
<b>+7</b>	<b>+1.5</b>	<b>+42</b>	<b>+23</b>	<b>+77</b>	<b>28.68</b>	<b>27.96</b>	<b>4 WR 97</b>

- Recommended for larger heifers or cows
- Durable, moderate and efficient dam from our top cow family records 4 births @ 97
- We lost production on the dam in June due to mastitis
- Very attractive and clean made with great muscle design, he has all the credentials to make trouble free productive range cattle



**Ox-Bow-Beebe-Queen-841**  
Granddam of Lot 4 on Winter Range

### 4 Ox Bow Game Day 3236

<b>Bull</b>		Tag 185	Calved 1/29/13	Reg. 17663850			
Boyd New Day 8005#	A A R New Trend#	Indiv. Performance					
<b>GDAR Game Day 449#</b>	S V F Forever Lady 57D	Birth Wt	<b>91</b>				
G D A R Miss Wix 474#	Tehama Band 207#	205 Wt	<b>642</b>				
	G D A R Miss Wix 749	365 Wt	<b>1186</b>				
Redland Emblazon 3234	O C C Emblazon 854E#	IMF	<b>4.04/118</b>				
<b>Ox Bow Beebe Queen 185</b>	Redland Edella 2079	REA	<b>14.4/101</b>				
Ox Bow Beebe Queen 841	S A V Final Answer 0035#	Rib Fat	<b>0.23/79</b>				
	Ox Bow Beebe Queen 342	Dam Production					
CED	BW	WW	Milk	YW	\$W	\$B	
<b>+4</b>	<b>+2.7</b>	<b>+48</b>	<b>+24</b>	<b>+85</b>	<b>28.82</b>	<b>35.39</b>	<b>1 WR 100</b>

- Recommended for cows
- Very moderate heavy muscled Game Day
- Lots of fleshing ability and range function bred into this pedigree

### 7 Ox Bow Game Day 3231

<b>Bull</b>		Tag 1131	Calved 2/3/13	Reg. 17663845			
Boyd New Day 8005#	A A R New Trend#	Indiv. Performance					
<b>GDAR Game Day 449#</b>	S V F Forever Lady 57D	Birth Wt	<b>88</b>				
G D A R Miss Wix 474#	Tehama Band 207#	205 Wt	<b>737</b>				
	G D A R Miss Wix 749	365 Wt	<b>1236</b>				
S A V Final Answer 0035#	Sitz Traveler 8180#	IMF	<b>3.95/116</b>				
<b>Ox Bow Emma E 1131</b>	S A V Emulous 8145	REA	<b>15.0/106</b>				
Ox Bow Emma E 902	Redland Emblazon 3234	Rib Fat	<b>0.34/117</b>				
	Ox Bow Emma E 404	Dam Production					
CED	BW	WW	Milk	YW	\$W	\$B	
<b>+6</b>	<b>+1.6</b>	<b>+59</b>	<b>+28</b>	<b>+98</b>	<b>38.64</b>	<b>45.91</b>	<b>1 WR 114</b>

- Recommended for larger heifers or cows
- Top notch Final Answer dam with great fleshing ability and udder quality
- Generations of range durable females, third dam by Bushwacker

### 5 Ox Bow Game Day 3316

<b>Bull</b>		Tag 868	Calved 1/30/13	Reg. 17663898			
Boyd New Day 8005#	A A R New Trend#	Indiv. Performance					
<b>GDAR Game Day 449#</b>	S V F Forever Lady 57D	Birth Wt	<b>85</b>				
G D A R Miss Wix 474#	Tehama Band 207#	205 Wt	<b>631</b>				
	G D A R Miss Wix 749	365 Wt	<b>1180</b>				
S A V 8180 Traveler 004#	Sitz Traveler 8180#	IMF	<b>2.84/83</b>				
<b>Ox Bow Manor 868</b>	Boyd Forever Lady 8003	REA	<b>14.1/99</b>				
Ox Bow Manor 334#	N Bar Emulation EXT#	Rib Fat	<b>0.25/86</b>				
	Ox Bow Manor 037	Dam Production					
CED	BW	WW	Milk	YW	\$W	\$B	
<b>+8</b>	<b>+1.0</b>	<b>+48</b>	<b>+26</b>	<b>+86</b>	<b>32.84</b>	<b>50.68</b>	<b>4 WR 103</b>

- Recommended for larger heifers or cows
- Pathfinder grand dam by EXT from our top cow family
- Larger framed with good middle and muscle



**Ox-Bow-Blackbird-691**  
Emblazon Blood Runs Deep in the Ox Bow Herd



**Ox-Bow-Blackbird-955**  
Granddam to Lot 8

**10 Ox Bow Game Day 3344**  
Bull Tag 9109 Calved 2/5/13 Reg. 17663913

Boyd New Day 8005#	A A R New Trend#	Indiv. Performance
<b>GDAR Game Day 449#</b>	S V F Forever Lady 57D	Birth Wt <b>79</b>
G D A R Miss Wix 474#	Tehama Band 207#	205 Wt <b>648</b>
	G D A R Miss Wix 749	365 Wt <b>1282</b>
S A V Final Answer 0035#	Sitz Traveler 8180#	IMF <b>3.28/96</b>
<b>Ox Bow Everelda Entense 9109</b>	S A V Emulous 8145	REA <b>15.8/111</b>
Ox Bow Everelda Entense 5106	Twin Valley Precision E1 91#	Rib Fat <b>0.32/110</b>
	Sitz Everelda Entense 2198	

CED	BW	WW	Milk	YW	\$W	\$B	Dam Production
<b>+11</b>	<b>-0.4</b>	<b>+50</b>	<b>+23</b>	<b>+91</b>	<b>33.46</b>	<b>55.98</b>	<b>3 WR 98</b>

- Recommended for heifers or cows
- Third dam by EXT is a direct daughter of Sitz Everelda Entense 1137
- Very clean made with attractive pattern and quality muscle

**8 Ox Bow Game Day 3272**  
Bull Tag 693 Calved 2/4/13 Reg. 17663867

Boyd New Day 8005#	A A R New Trend#	Indiv. Performance
<b>GDAR Game Day 449#</b>	S V F Forever Lady 57D	Birth Wt <b>94</b>
G D A R Miss Wix 474#	Tehama Band 207#	205 Wt <b>637</b>
	G D A R Miss Wix 749	365 Wt <b>1096</b>
S A V 8180 Traveler 004#	Sitz Traveler 8180#	IMF <b>3.66/107</b>
<b>Ox Bow Blackbird 693</b>	Boyd Forever Lady 8003	REA <b>15.1/104</b>
Ox Bow Blackbird 955#	Sitz Bonanza 7426	Rib Fat <b>0.28/88</b>
	Ox Bow Blackbird 638	

CED	BW	WW	Milk	YW	\$W	\$B	Dam Production
<b>+5</b>	<b>+2.0</b>	<b>+47</b>	<b>+22</b>	<b>+85</b>	<b>32.72</b>	<b>42.38</b>	<b>6 WR 98</b>

- Recommended for cows
- Pathfinder grand dam topped our 2005 Female Sale
- A bit bigger framed with good depth and length

**11 Ox Bow Game Day 3212**  
Bull Tag 164 Calved 2/6/13 Reg. 17663835

Boyd New Day 8005#	A A R New Trend#	Indiv. Performance
<b>GDAR Game Day 449#</b>	S V F Forever Lady 57D	Birth Wt <b>80</b>
G D A R Miss Wix 474#	Tehama Band 207#	205 Wt <b>679</b>
	G D A R Miss Wix 749	365 Wt <b>1228</b>
Sinclair Extravagant 6X7	N Bar Emulation EXT#	IMF <b>3.71/109</b>
<b>Ox Bow Emma E 164</b>	Sinclair Lady 2P30 8146	REA <b>13.5/95</b>
Ox Bow Emma E 404	B C C Bushwacker 41-93#	Rib Fat <b>0.25/86</b>
	Ox Bow Emma E 685	

CED	BW	WW	Milk	YW	\$W	\$B	Dam Production
<b>+7</b>	<b>+1.7</b>	<b>+53</b>	<b>+26</b>	<b>+89</b>	<b>35.54</b>	<b>55.31</b>	<b>1 WR 105</b>

- Recommended for larger heifers or cows
- Grand dam and great grand dam both record 6 weaned @ 103
- Strong range durability and udder quality for generations back to foundation Traveler 6807 female from Sitz
- A tick bigger framed Game Day with attractive pattern and ample muscle



**12 Ox Bow Game Day 3323**  
Bull Tag 611 Calved 2/6/13 Reg. +17663903

Boyd New Day 8005#	A A R New Trend#	Indiv. Performance
<b>GDAR Game Day 449#</b>	S V F Forever Lady 57D	Birth Wt <b>91</b>
G D A R Miss Wix 474#	Tehama Band 207#	205 Wt <b>717</b>
	G D A R Miss Wix 749	365 Wt <b>1261</b>
G A R Expectation 4915#	N Bar Emulation EXT#	IMF <b>3.91/110</b>
<b>Ox Bow Lucy 433</b>	G A R Traveler 2421	REA <b>15.3/113</b>
Ox Bow Lucy 187	Sitz Traveler 9929#	Rib Fat <b>0.35/117</b>
	North Fork Lucy 6070	

CED	BW	WW	Milk	YW	\$W	\$B	Dam Production
<b>+6</b>	<b>+2.0</b>	<b>+54</b>	<b>+25</b>	<b>+93</b>	<b>38.07</b>	<b>74.07</b>	<b>7 WR 104</b>

- Recommended for larger heifers or cows
- ET Donor dam displays great phenotype and udder quality along with strong carcass value
- Tremendous profile and balance of rib, top, and quarter

**9 Ox Bow Game Day 3308**  
Bull Tag 022 Calved 2/4/13 Reg. 17663891

Boyd New Day 8005#	A A R New Trend#	Indiv. Performance
<b>GDAR Game Day 449#</b>	S V F Forever Lady 57D	Birth Wt <b>80</b>
G D A R Miss Wix 474#	Tehama Band 207#	205 Wt <b>674</b>
	G D A R Miss Wix 749	365 Wt <b>1165</b>
Garret's Nationwide 8001	O C C Emblazon 854E#	IMF <b>3.45/101</b>
<b>Ox Bow Polly 022</b>	Boyd Forever Lady 8003	REA <b>14.4/101</b>
Ox Bow Polly 852	B C C Bushwacker 41-93#	Rib Fat <b>0.30/103</b>
	Ox Bow Polly 4115	

CED	BW	WW	Milk	YW	\$W	\$B	Dam Production
<b>+7</b>	<b>+0.9</b>	<b>+54</b>	<b>+23</b>	<b>+93</b>	<b>35.17</b>	<b>44.33</b>	<b>2 WR 102</b>

- Recommended for heifers or cows
- Very good cow family, Bushwacker x EXT grand dam is one of our best
- Very moderate with strong top and quarter muscle



**Ox-Bow-Lucy-433**  
ET Donor Dam of Lot 12



# 13 Ox Bow Game Day 3315

<b>Bull</b>	Tag 664	Calved 2/7/13	Reg. 17663897				
Boyd New Day 8005# <b>GDAR Game Day 449#</b> G D A R Miss Wix 474#	A A R New Trend# S V F Forever Lady 57D Tehama Band 207# G D A R Miss Wix 749	Indiv. Performance Birth Wt <b>80</b> 205 Wt <b>656</b> 365 Wt <b>1154</b>					
S A V 8180 Traveler 004# <b>Coleman Erica 664</b> G A R Ext 4817	Sitz Traveler 8180# Boyd Forever Lady 8003 N Bar Emulation EXT# G A R Traveler 641	IMF <b>2.88/84</b> REA <b>14.7/101</b> Rib Fat <b>0.24/75</b>					
CED <b>+10</b>	BW <b>-0.2</b>	WW <b>+46</b>	Milk <b>+21</b>	YW <b>+84</b>	\$W <b>31.29</b>	\$B <b>49.23</b>	Dam Production <b>5 WR 94</b>

- Recommended for heifers or cows
- Dam has 5 births @ 98
- Very clean made and smooth, will transmit udder quality and carcass value



**Ox-Bow-Miss-Diana-684**  
Dam of Lot 14

# 14 Ox Bow Game Day 3347

<b>Bull</b>	Tag 684	Calved 2/7/13	Reg. 17663916				
Boyd New Day 8005# <b>GDAR Game Day 449#</b> G D A R Miss Wix 474#	A A R New Trend# S V F Forever Lady 57D Tehama Band 207# G D A R Miss Wix 749	Indiv. Performance Birth Wt <b>85</b> 205 Wt <b>684</b> 365 Wt <b>1231</b>					
S A V 8180 Traveler 004# <b>Ox Bow Miss Diana 684</b> Car Miss Diana 980#	Sitz Traveler 8180# Boyd Forever Lady 8003 High Valley 4C6 Ambush# C A R Lady Traveler 122#	IMF <b>3.86/113</b> REA <b>14.9/103</b> Rib Fat <b>0.35/109</b>					
CED <b>+9</b>	BW <b>+0.7</b>	WW <b>+47</b>	Milk <b>+25</b>	YW <b>+84</b>	\$W <b>36.31</b>	\$B <b>55.13</b>	Dam Production <b>6 WR 101</b>

- Recommended for heifers or cows
- Strong maternal value, grand dam and great grand dam are Pathfinders
- Very well balanced, long sided with strong top and quarter

# 15 Ox Bow Game Day 3290

<b>Bull</b>	Tag 8179	Calved 2/9/13	Reg. 17663878				
Boyd New Day 8005# <b>GDAR Game Day 449#</b> G D A R Miss Wix 474#	A A R New Trend# S V F Forever Lady 57D Tehama Band 207# G D A R Miss Wix 749	Indiv. Performance Birth Wt <b>100</b> 205 Wt <b>676</b> 365 Wt <b>1089</b>					
Ox Bow Example 4215 <b>Ox Bow Emma E 8179</b> Ox Bow Emma E 3107	G A R Example 3204# Ox Bow Lucy 965 G D A R Traveler 561# Ox Bow Emma E 685	IMF <b>2.49/73</b> REA <b>14.0/99</b> Rib Fat <b>0.19/66</b>					
CED <b>+3</b>	BW <b>+2.7</b>	WW <b>+50</b>	Milk <b>+24</b>	YW <b>+87</b>	\$W <b>30.05</b>	\$B <b>26.36</b>	Dam Production <b>4 WR 98</b>

- Recommended for cows
- Generations of easy fleshing, structurally sound range females
- Foundation female from Sitz by Traveler 6807

# 16 Ox Bow Game Day 3332

<b>Bull</b>	Tag 0126	Calved 2/9/13	Reg. 17663906				
Boyd New Day 8005# <b>GDAR Game Day 449#</b> G D A R Miss Wix 474#	A A R New Trend# S V F Forever Lady 57D Tehama Band 207# G D A R Miss Wix 749	Indiv. Performance Birth Wt <b>84</b> 205 Wt <b>660</b> 365 Wt <b>1134</b>					
Woodhill Foresight# <b>Ox Bow Pride 0126</b> Ox Bow Pride 6103	Papa Forte 1921# Bon View Gammer 85 O C C Emblazon 854E# Ox Bow Pride 422	IMF <b>3.54/104</b> REA <b>14.6/103</b> Rib Fat <b>0.16/55</b>					
CED <b>+7</b>	BW <b>+1.4</b>	WW <b>+52</b>	Milk <b>+24</b>	YW <b>+90</b>	\$W <b>34.12</b>	\$B <b>49.06</b>	Dam Production <b>2 WR 101</b>

- Recommended for heifers or cows
- Very moderate, range efficient dam
- Well balanced set of numbers, plenty of performance with proven sire Foresight and third dam by Right Time 338

# 17 Ox Bow Game Day 3338

<b>Bull</b>	Tag 920	Calved 2/9/13	Reg. 17663910				
Boyd New Day 8005# <b>GDAR Game Day 449#</b> G D A R Miss Wix 474#	A A R New Trend# S V F Forever Lady 57D Tehama Band 207# G D A R Miss Wix 749	Indiv. Performance Birth Wt <b>92</b> 205 Wt <b>602</b> 365 Wt <b>1183</b>					
S A V Final Answer 0035# <b>Ox Bow Lady Blackbird 920</b> Ox Bow Lady Blackbird 265	Sitz Traveler 8180# S A V Emulous 8145 G A R Example 3204# Gdar Lady Blackbird 7198	IMF <b>3.14/92</b> REA <b>13.7/96</b> Rib Fat <b>0.32/110</b>					
CED <b>+8</b>	BW <b>+1.3</b>	WW <b>+46</b>	Milk <b>+23</b>	YW <b>+84</b>	\$W <b>30.23</b>	\$B <b>38.55</b>	Dam Production <b>2 WR 90</b>

- Recommended for larger heifers or cows
- Moderate and well muscled with solid structure and fleshing ability bred in

# 18 Ox Bow Game Day 3343

<b>Bull</b>	Tag 984	Calved 2/10/13	Reg. 17663912				
Boyd New Day 8005# <b>GDAR Game Day 449#</b> G D A R Miss Wix 474#	A A R New Trend# S V F Forever Lady 57D Tehama Band 207# G D A R Miss Wix 749	Indiv. Performance Birth Wt <b>85</b> 205 Wt <b>673</b> 365 Wt <b>1259</b>					
G A R Example 3204# <b>Ox Bow Manor 984</b> Ox Bow Manor 615	N Bar Emulation EXT# G A R Bando 10 S A V 8180 Traveler 004# Ox Bow Manor 327#	IMF <b>3.97/116</b> REA <b>14.1/99</b> Rib Fat <b>0.33/114</b>					
CED <b>+8</b>	BW <b>+0.3</b>	WW <b>+51</b>	Milk <b>+25</b>	YW <b>+94</b>	\$W <b>33.07</b>	\$B <b>62.90</b>	Dam Production <b>3 WR 96</b>

- Recommended for heifers or cows
- Easy fleshing, high capacity double bred Emulation dam, Pathfinder 3rd dam by EXT
- Moderate and clean made with a big square hip



**Ox-Bow-Manor-327**  
Foundation Cow Behind Lot 18



**Ox-Bow-Pride-5161**  
Granddam of Lot 19

**19 Ox Bow Game Day 3306**  
Bull Tag 0136 Calved 2/15/13 Reg. 17663889

Boyd New Day 8005# <b>GDAR Game Day 449#</b> G D A R Miss Wix 474#	A A R New Trend# S V F Forever Lady 57D Tehama Band 207# G D A R Miss Wix 749	Indiv. Performance Birth Wt <b>80</b> 205 Wt <b>691</b> 365 Wt <b>1187</b> IMF <b>3.33/98</b> REA <b>14.1/99</b> Rib Fat <b>0.38/131</b>
G A R Example 3204# <b>Ox Bow Pride 0136</b> Ox Bow Pride 5161	N Bar Emulation EXT# G A R Bando 10 Ox Bow Russ 3250 North Fork Pride 8109	
CED <b>+9</b> BW <b>+0.4</b> WW <b>+53</b> Milk <b>+25</b> YW <b>+91</b> \$W <b>36.30</b> \$B <b>50.62</b>		Dam Production <b>2 WR 108</b>

- Recommended for heifers or cows
- Sound structured and easy fleshing cow family, third dam by Traveler 9929
- Smooth shoulder and added length for calving ease

**20 Ox Bow Game Day 3576**  
Bull Tag 841 Calved 2/4/13 Reg. 17663929

GDAR Game Day 449# <b>R44 Game Day 0302</b> M A R Bess 3085#	Boyd New Day 8005# G D A R Miss Wix 474# Kahn Broadband R A 94L# M A R Bess 1022	Indiv. Performance Birth Wt <b>78</b> 205 Wt <b>628</b> 365 Wt <b>1244</b> IMF <b>4.54/133</b> REA <b>15.1/106</b> Rib Fat <b>0.37/128</b>
S A V Final Answer 0035# <b>Ox Bow Beebe Queen 841</b> Ox Bow Beebe Queen 342	Sitz Traveler 8180# S A V Emulous 8145 G A R Example 3204# Ox Bow Beebe Queen 674	
CED <b>+12</b> BW <b>-1.2</b> WW <b>+47</b> Milk <b>+25</b> YW <b>+86</b> \$W <b>34.08</b> \$B <b>48.78</b>		Dam Production <b>3 WR 95</b>

- Recommended for heifers or cows
- Moderate and attractive pattern with a lot of muscle, pattern very similar to the direct Game Day sons

**21 Ox Bow Game Day 3230**  
Bull Tag 1155 Calved 2/23/13 Reg. 17663844

GDAR Game Day 449# <b>R44 Game Day 0302</b> M A R Bess 3085#	Boyd New Day 8005# G D A R Miss Wix 474# Kahn Broadband R A 94L# M A R Bess 1022	Indiv. Performance Birth Wt <b>88</b> 205 Wt <b>694</b> 365 Wt <b>1180</b> IMF <b>3.83/112</b> REA <b>13.9/98</b> Rib Fat <b>0.26/90</b>
Ox Bow Emblazon 9278 <b>Ox Bow Eisa Evergreen 1155</b> Ox Bow Eisa Evergreen 816	O C C Emblazon 854E# Ox Bow Blackbird 570 Woodhill Foresight# Ox Bow Eisa Evergreen 5104	
CED <b>+3</b> BW <b>+2.5</b> WW <b>+52</b> Milk <b>+26</b> YW <b>+92</b> \$W <b>31.16</b> \$B <b>44.12</b>		Dam Production <b>1 WR 108</b>

- Recommended for cows
- Very moderate and big middled, body type to increase efficiency

**22 Ox Bow Game Day 3266**  
Bull Tag 974 Calved 2/26/13 Reg. 17663864

GDAR Game Day 449# <b>R44 Game Day 0302</b> M A R Bess 3085#	Boyd New Day 8005# G D A R Miss Wix 474# Kahn Broadband R A 94L# M A R Bess 1022	Indiv. Performance Birth Wt <b>92</b> 205 Wt <b>645</b> 365 Wt <b>1221</b> IMF <b>3.05/89</b> REA <b>14.3/101</b> Rib Fat <b>0.23/79</b>
S A V Final Answer 0035# <b>Ox Bow Miss Diana 974</b> Ox Bow Miss Diana 457	Sitz Traveler 8180# S A V Emulous 8145 W C C Special Design L309# Ox Bow Miss Diana 283	
CED <b>+7</b> BW <b>+1.3</b> WW <b>+49</b> Milk <b>+27</b> YW <b>+91</b> \$W <b>31.66</b> \$B <b>45.66</b>		Dam Production <b>3 WR 105</b>

- Recommended for cows
- Solid built bull with good rib and top and quarter thickness

**23 Ox Bow Game Day 3222**  
Bull Tag 143 Calved 2/27/13 Reg. 17663859

GDAR Game Day 449# <b>R44 Game Day 0302</b> M A R Bess 3085#	Boyd New Day 8005# G D A R Miss Wix 474# Kahn Broadband R A 94L# M A R Bess 1022	Indiv. Performance Birth Wt <b>66</b> 205 Wt <b>689</b> 365 Wt <b>1190</b> IMF <b>4.51/132</b> REA <b>14.2/98</b> Rib Fat <b>0.42/131</b>
S A V Final Answer 0035# <b>Ox Bow Polly 143</b> Ox Bow Polly 833	Sitz Traveler 8180# S A V Emulous 8145 B C C Bushwacker 41-93# Ox Bow Polly 4130	
CED <b>+14</b> BW <b>-1.9</b> WW <b>+51</b> Milk <b>+28</b> YW <b>+89</b> \$W <b>38.60</b> \$B <b>34.01</b>		Dam Production <b>1 WR 99</b>

- Recommended for heifers or cows
- Strong performance and maternal pedigree, third dam by Right Time
- Clean made and smooth shouldered with good depth and a strong quarter

**24 Ox Bow Game Day 3243**  
Bull Tag 0132 Calved 3/6/13 Reg. 17663855

GDAR Game Day 449# <b>R44 Game Day 0302</b> M A R Bess 3085#	Boyd New Day 8005# G D A R Miss Wix 474# Kahn Broadband R A 94L# M A R Bess 1022	Indiv. Performance Birth Wt <b>84</b> 205 Wt <b>636</b> 365 Wt <b>1236</b> IMF <b>3.18/93</b> REA <b>14.7/104</b> Rib Fat <b>0.27/93</b>
Woodhill Foresight# <b>Ox Bow Blackbird 0132</b> Ox Bow Blackbird 7123	Papa Forte 1921# Bon View Gammer 85 O C C Emblazon 854E# Ox Bow Blackbird 5183	
CED <b>+9</b> BW <b>+0.8</b> WW <b>+47</b> Milk <b>+27</b> YW <b>+85</b> \$W <b>32.77</b> \$B <b>49.94</b>		Dam Production <b>2 WR 100</b>

- Recommended for heifers or cows
- Moderate and efficient dam from highly maternal cow family
- Emblazon grand dam has 5 births @ 99, 5 weaned @ 104
- Younger bull that is moderate with great top width, depth and thickness

**25 Ox Bow Game Day 3251**  
Bull Tag 0130 Calved 3/11/13 Reg. 17663859

GDAR Game Day 449# <b>R44 Game Day 0302</b> M A R Bess 3085#	Boyd New Day 8005# G D A R Miss Wix 474# Kahn Broadband R A 94L# M A R Bess 1022	Indiv. Performance Birth Wt <b>85</b> 205 Wt <b>690</b> 365 Wt <b>1218</b> IMF <b>3.25/95</b> REA <b>15.4/108</b> Rib Fat <b>0.38/131</b>
S A V Final Answer 0035# <b>Ox Bow Manor 0130</b> Ox Bow Manor 7139	Sitz Traveler 8180# S A V Emulous 8145 O C C Emblazon 854E# Ox Bow Manor 5121	
CED <b>+10</b> BW <b>+0.0</b> WW <b>+53</b> Milk <b>+27</b> YW <b>+91</b> \$W <b>37.39</b> \$B <b>37.19</b>		Dam Production <b>2 WR 110</b>

- Recommended for heifers or cows
- Easy fleshing high performance dam from our top cow family
- Range proven pedigree with Final Answer, Emblazon, and EXT on the bottom side
- Moderate, clean made and attractive patterned with ample muscle



**30  
Sons &  
Grandsons  
Sell**



**S A V Final Answer 0035**

Calved 2/22/00 Reg. 13592905 #

G D A R Traveler 71#  
**Sitz Traveler 8180#**  
Sitz Everelda Entense 1137

Bon View Bando 598#  
**S A V Emulous 8145**  
S A V Sky Emulous 2124

Traveler 1148 G D A R#  
G D A R Miss Blackcap 567  
G D A R Rainmaker 340#  
Sitz Everelda Entense 2335

Tehama Bando 155#  
Bon View Dora 56#  
Ellanin Sky Diver#  
Tail N 0383

Sure fire calving ease bull. One of the most dominant sires in the breed. Sires a tremendous combination of low birth weight, extra volume, muscle, and performance. #2 S Weaning bull in the breed. Big scrotal bull siring excellent daughters with the fleshing ability to perform in the toughest environments.

BW	WW	Milk	YW	Scrotal	Marb	RE	Fat
-1.0	+61	+25	+103	+1.39	+0.53	+0.49	+0.033
CED	SEN	SW	SF	SG	SB		
+13	5.43	60.79	46.50	35.89	51.85		



**Ox Bow Final Answer 3232**

Tag 138 Calved 1/21/13 Reg. 17663846

Sitz Traveler 8180#  
**S A V Final Answer 0035#**  
S A V Emulous 8145

G A R Example 3204#  
**Ox Bow Forever Lady 138**  
Ox Bow Forever Lady 7228

G D A R Traveler 71#  
Sitz Everelda Entense 1137  
Bon View Bando 598#  
S A V Sky Emulous 2124

N Bar Emulation EXT#  
G A R Bando 10  
Woodhill Foresight#  
Ox Bow Forever Lady 350

Indiv. Performance	
Birth Wt	<b>82</b>
205 Wt	<b>665</b>
365 Wt	<b>1236</b>
IMF	<b>3.10/91</b>
REA	<b>13.7/96</b>
Rib Fat	<b>0.27/93</b>

CED	BW	WW	Milk	YW	SW	SB	Dam Production
+9	+0.4	+53	+26	+88	37.89	56.51	1 WR 103

- Recommended for heifers or cows
- Grand dam has 4 weaned at 108
- Dam has superior udder quality and attachment
- Smooth and clean made with great length and balance



**Ox Bow Final Answer 3337**

Tag 996 Calved 2/4/13 Reg. 17663909

Sitz Traveler 8180#  
**S A V Final Answer 0035#**  
S A V Emulous 8145

CAR Tracker 321  
**Ox Bow Emma E 996**  
Ox Bow Emma E 362#

G D A R Traveler 71#  
Sitz Everelda Entense 1137  
Bon View Bando 598#  
S A V Sky Emulous 2124

Car Tracker 904#  
C A R Real Lady 6108#  
Rito 616 of 4B20 6807#  
Ox Bow Emma E 665

Indiv. Performance	
Birth Wt	<b>91</b>
205 Wt	<b>736</b>
365 Wt	<b>1322</b>
IMF	<b>3.49/102</b>
REA	<b>14.2/100</b>
Rib Fat	<b>0.23/79</b>

CED	BW	WW	Milk	YW	SW	SB	Dam Production
+7	+1.7	+55	+25	+91	36.43	65.18	2 WR 105

- Recommended for larger heifers or cows
- Pathfinder grand dam has a birth ratio of 99 on 8 calves
- Top maternal bloodline with third dam by Traveler 8180



**Ox Bow Final Answer 3305**

Tag 749 Calved 2/2/13 Reg. 17663888

Sitz Traveler 8180#  
**S A V Final Answer 0035#**  
S A V Emulous 8145

Baldrige Jethro 75J#  
**Ox Bow Barbaramere Jet 749**  
Ox Bow Barbaramere Jet 420

G D A R Traveler 71#  
Sitz Everelda Entense 1137  
Bon View Bando 598#  
S A V Sky Emulous 2124

Baldrige Bob  
J L B Queen Eva 424#  
B C C Bushwacker 41-93#  
Ox Bow Barbaramere Jet 086

Indiv. Performance	
Birth Wt	<b>76</b>
205 Wt	<b>730</b>
365 Wt	<b>1196</b>
IMF	<b>2.68/78</b>
REA	<b>15.1/104</b>
Rib Fat	<b>0.39/122</b>

CED	BW	WW	Milk	YW	SW	SB	Dam Production
+13	-1.2	+55	+25	+93	39.35	42.12	4 WR 104

- Recommended for heifers or cows
- Dam records 4 births @ 99
- Clean fronted and really long with strong quarter and stifle muscle



Final Answer Daughter in Production



## 32 Ox Bow Final Answer 3575

**Bull** Tag 8111 Calved 2/8/13 Reg. 17663928

Sitz Traveler 8180# <b>S A V Final Answer 0035#</b> S A V Emulous 8145	G D A R Traveler 71# Sitz Everelda Entense 1137 Bon View Bando 598# S A V Sky Emulous 2124	<b>Indiv. Performance</b> Birth Wt <b>87</b> 205 Wt <b>672</b> 365 Wt <b>1064</b> IMF <b>3.44/101</b> REA <b>13.2/93</b> Rib Fat <b>0.17/59</b>
G A R Example 3204# <b>Ox Bow Blackbird 8111</b> Ox Bow Blackbird 638	N Bar Emulation EXT# G A R Bando 10 V D A R New Trend 779 Ox Bow Blackbird 308	

CED	BW	WW	Milk	YW	\$W	\$B	Dam Production
<b>+10</b>	<b>+0.0</b>	<b>+53</b>	<b>+23</b>	<b>+88</b>	<b>37.37</b>	<b>46.80</b>	<b>4 WR 99</b>

- Recommended for heifers or cows
- High performance and carcass value cow family
- He will transmit strong udder quality to his daughters

## 29 Ox Bow Final Answer 3354

**Bull** Tag 0150 Calved 2/4/13 Reg. 17663920

Sitz Traveler 8180# <b>S A V Final Answer 0035#</b> S A V Emulous 8145	G D A R Traveler 71# Sitz Everelda Entense 1137 Bon View Bando 598# S A V Sky Emulous 2124	<b>Indiv. Performance</b> Birth Wt <b>87</b> 205 Wt <b>753</b> 365 Wt <b>1335</b> IMF <b>3.72/109</b> REA <b>15.5/109</b> Rib Fat <b>0.36/124</b>
G A R Example 3204# <b>Ox Bow Blackcap 0150</b> Ox Bow Blackcap 594	N Bar Emulation EXT# G A R Bando 10 Rito 616 of 4B20 6807# Ox Bow Blackcap 361#	

CED	BW	WW	Milk	YW	\$W	\$B	Dam Production
<b>+10</b>	<b>+0.1</b>	<b>+58</b>	<b>+27</b>	<b>+97</b>	<b>39.81</b>	<b>74.42</b>	<b>2 WR 112</b>

- Recommended for heifers or cows
- Strong performance and udder quality cow family
- Top ratioing Final Answer son at weaning
- Clean fronted and very long bull with exceptional top and quarter width

## 33 Ox Bow Final Answer 3280

**Bull** Tag 7167 Calved 2/11/13 Reg. 17663873

Sitz Traveler 8180# <b>S A V Final Answer 0035#</b> S A V Emulous 8145	G D A R Traveler 71# Sitz Everelda Entense 1137 Bon View Bando 598# S A V Sky Emulous 2124	<b>Indiv. Performance</b> Birth Wt <b>82</b> 205 Wt <b>681</b> 365 Wt <b>1263</b> IMF <b>3.67/107</b> REA <b>15.2/105</b> Rib Fat <b>0.41/128</b>
Coleman Right Time 334 <b>Ox Bow Hyalite 7167</b> Ox Bow Hyalite 211	Leachman Right Time# Coleman Miss Wix 923 Vermilion Dateline 7078# V D A R Hyalite 5198	

CED	BW	WW	Milk	YW	\$W	\$B	Dam Production
<b>+11</b>	<b>-0.6</b>	<b>+49</b>	<b>+23</b>	<b>+85</b>	<b>35.22</b>	<b>56.85</b>	<b>2 WR 94</b>

- Recommended for heifers or cows
- High volume, good uddered dam
- Long and deep made with extra bone and muscle

## 30 Ox Bow Final Answer 3278

**Bull** Tag 756 Calved 2/8/13 Reg. 17663871

Sitz Traveler 8180# <b>S A V Final Answer 0035#</b> S A V Emulous 8145	G D A R Traveler 71# Sitz Everelda Entense 1137 Bon View Bando 598# S A V Sky Emulous 2124	<b>Indiv. Performance</b> Birth Wt <b>84</b> 205 Wt <b>694</b> 365 Wt <b>1203</b> IMF <b>3.22/94</b> REA <b>13.5/93</b> Rib Fat <b>0.30/94</b>
O C C Emblazon 854E# <b>Ox Bow Blackcap 756</b> Ox Bow Blackcap 361#	D H D Traveler 6807# Dixie Erica of C H 1019 Sitz Alliance 6595# N F C Blackcap 7008	

CED	BW	WW	Milk	YW	\$W	\$B	Dam Production
<b>+10</b>	<b>+0.4</b>	<b>+53</b>	<b>+24</b>	<b>+87</b>	<b>37.67</b>	<b>42.15</b>	<b>5 WR 103</b>

- Recommended for heifers or cows
- Dam has 5 births @ 95
- Moderate framed with extra depth and capacity
- Good fleshing ability and udder quality

## 34 Ox Bow Final Answer 3292

**Bull** Tag 8136 Calved 2/12/13 Reg. 17663880

Sitz Traveler 8180# <b>S A V Final Answer 0035#</b> S A V Emulous 8145	G D A R Traveler 71# Sitz Everelda Entense 1137 Bon View Bando 598# S A V Sky Emulous 2124	<b>Indiv. Performance</b> Birth Wt <b>83</b> 205 Wt <b>638</b> 365 Wt <b>1190</b> IMF <b>5.09/149</b> REA <b>14.0/99</b> Rib Fat <b>0.33/114</b>
Bon View Emulation Ext 473# <b>Ox Bow Evergreen 8136</b> Ox Bow Evergreen 610	N Bar Emulation EXT# Bon View Ruth 808 S A V 8180 Traveler 004# Ox Bow Evergreen 0033	

CED	BW	WW	Milk	YW	\$W	\$B	Dam Production
<b>+10</b>	<b>-0.2</b>	<b>+49</b>	<b>+24</b>	<b>+87</b>	<b>34.25</b>	<b>60.51</b>	<b>3 WR 105</b>

- Recommended for heifers or cows
- Strong Traveler-Emulation pedigree, traces 3 times to Sitz Everelda Entense 1137 with third dam by Traveler 9929
- A tick bigger framed with calving ease smoothness

## 31 Ox Bow Final Answer 3281

**Bull** Tag 0111 Calved 2/8/13 Reg. 17663874

Sitz Traveler 8180# <b>S A V Final Answer 0035#</b> S A V Emulous 8145	G D A R Traveler 71# Sitz Everelda Entense 1137 Bon View Bando 598# S A V Sky Emulous 2124	<b>Indiv. Performance</b> Birth Wt <b>74</b> 205 Wt <b>652</b> 365 Wt <b>1156</b> IMF <b>2.98/87</b> REA <b>12.4/87</b> Rib Fat <b>0.24/83</b>
G A R Example 3204# <b>Ox Bow Eisa Evergreen 0111</b> Ox Bow Eisa Evergreen 5104	N Bar Emulation EXT# G A R Bando 10 Rito 616 of 4B20 6807# Ox Bow Eisa Evergreen 328	

CED	BW	WW	Milk	YW	\$W	\$B	Dam Production
<b>+14</b>	<b>-1.7</b>	<b>+51</b>	<b>+24</b>	<b>+88</b>	<b>37.59</b>	<b>48.80</b>	<b>2 WR 100</b>

- Recommended for heifers or cows
- Reliable calving ease, dam and grand dam are low birth weight producers
- Smooth shouldered with good balance of length, depth and thickness



**Boyd-Resume-9008**  
Sire of Lots 35-41

**35****Ox Bow Resume 3310**

<b>Bull</b>	Tag 937	Calved 2/4/13	Reg. 17663893
S A V Final Answer 0035#	Sitz Traveler 8180#	Indiv. Performance	
<b>Boyd Resume 9008</b>	S A V Emulous 8145	Birth Wt	<b>79</b>
Boyd Forever Lady 5125	Wulffs Ext 6106#	205 Wt	<b>665</b>
	S V F Forever Lady 57D	365 Wt	<b>1263</b>
Woodhill Foresight#	Papa Forte 1921#	IMF	<b>3.08/90</b>
<b>Ox Bow Lucy 937</b>	Bon View Gammer 85	REA	<b>14.1/99</b>
Ox Bow Lucy 112	Bon View Emulation Ext 473#	Rib Fat	<b>0.31/107</b>
	Ox Bow Lucy 956	Dam Production	
<b>+11</b>	<b>-0.1</b>	<b>+52</b>	<b>+25</b>
<b>+94</b>	<b>34.58</b>	<b>66.91</b>	<b>3 WR 100</b>

- Recommended for heifers or cows
- Sure fire calving ease, dam has 3 births @ 96, grand dam 8 @ 89
- Bigger framed bull that will produce pounds, he is long sided with strong top width and a big square hip

**36****Ox Bow Resume 3322**

<b>Bull</b>	Tag 078	Calved 2/8/13	Reg. 17663902
S A V Final Answer 0035#	Sitz Traveler 8180#	Indiv. Performance	
<b>Boyd Resume 9008</b>	S A V Emulous 8145	Birth Wt	<b>89</b>
Boyd Forever Lady 5125	Wulffs Ext 6106#	205 Wt	<b>640</b>
	S V F Forever Lady 57D	365 Wt	<b>1363</b>
O C C Missing Link 830M	O C C Headliner 661H	IMF	<b>2.97/87</b>
<b>Ox Bow Forever Lady 078</b>	O C C Dixie Erica 946K	REA	<b>14.8/104</b>
Ox Bow Forever Lady 7228	Woodhill Foresight#	Rib Fat	<b>0.29/100</b>
	Ox Bow Forever Lady 350	Dam Production	
<b>+8</b>	<b>+1.6</b>	<b>+50</b>	<b>+26</b>
<b>+86</b>	<b>33.98</b>	<b>70.93</b>	<b>1 WR 99</b>

- Recommended for larger heifers or cows
- Easy fleshing range efficient dam
- Moderate with a lot of middle and tremendous top & quarter width

**37****Ox Bow Resume 3311**

<b>Bull</b>	Tag 085	Calved 2/9/13	Reg. 17663894
S A V Final Answer 0035#	Sitz Traveler 8180#	Indiv. Performance	
<b>Boyd Resume 9008</b>	S A V Emulous 8145	Birth Wt	<b>74</b>
Boyd Forever Lady 5125	Wulffs Ext 6106#	205 Wt	<b>656</b>
	S V F Forever Lady 57D	365 Wt	<b>1200</b>
CAR 504 Duke 898	CAR Duke 504	IMF	<b>4.64/136</b>
<b>Ox Bow Manor 085</b>	CAR Miss Diana 6165#	REA	<b>13.7/96</b>
Ox Bow Manor 5140	Rito 616 of 4B20 6807#	Rib Fat	<b>0.42/145</b>
	Ox Bow Manor 375	Dam Production	
<b>+12</b>	<b>+0.0</b>	<b>+54</b>	<b>+26</b>
<b>+93</b>	<b>37.26</b>	<b>64.98</b>	<b>2 WR 103</b>

- Recommended for heifers or cows
- Reliable calving ease, dam has 2 births @ 92, grand dam 5 births @ 94
- Top cow family, grand dam was an embryo donor and top carcass value female
- Small head and smooth shoulder, will be easy calving sire with solid performance and maternal value

**38****Ox Bow Resume 3291**

<b>Bull</b>	Tag 701	Calved 2/10/13	Reg. 17663879
S A V Final Answer 0035#	Sitz Traveler 8180#	Indiv. Performance	
<b>Boyd Resume 9008</b>	S A V Emulous 8145	Birth Wt	<b>84</b>
Boyd Forever Lady 5125	Wulffs Ext 6106#	205 Wt	<b>751</b>
	S V F Forever Lady 57D	365 Wt	<b>1257</b>
Woodhill Foresight#	Papa Forte 1921#	IMF	<b>3.97/116</b>
<b>Ox Bow Lucy 701</b>	Bon View Gammer 85	REA	<b>12.8/88</b>
Ox Bow Lucy 187	Sitz Traveler 9929#	Rib Fat	<b>0.30/94</b>
	North Fork Lucy 6070	Dam Production	
<b>+9</b>	<b>+1.0</b>	<b>+56</b>	<b>+24</b>
<b>+94</b>	<b>37.02</b>	<b>70.40</b>	<b>5 WR 96</b>

- Recommended for heifers or cows
- Dam has 5 births @ 94
- Dam is a feminine fronted, moderate and easy keeping female with an ideal udder
- A standout all summer, he is long, thick & really well put together

**39****Ox Bow Resume 3350**

<b>Bull</b>	Tag 8180	Calved 2/10/13	Reg. 17663918
S A V Final Answer 0035#	Sitz Traveler 8180#	Indiv. Performance	
<b>Boyd Resume 9008</b>	S A V Emulous 8145	Birth Wt	<b>100</b>
Boyd Forever Lady 5125	Wulffs Ext 6106#	205 Wt	<b>659</b>
	S V F Forever Lady 57D	365 Wt	<b>1179</b>
Redland Emblazon 3234	O C C Emblazon 854E#	IMF	<b>3.38/99</b>
<b>Ox Bow Linda 8180</b>	Redland Edella 2079	REA	<b>15.0/106</b>
Ox Bow Linda 343#	N Bar Emulation EXT#	Rib Fat	<b>0.29/100</b>
	Ox Bow Linda 968	Dam Production	
<b>+5</b>	<b>+3.0</b>	<b>+49</b>	<b>+24</b>
<b>+84</b>	<b>29.48</b>	<b>52.02</b>	<b>4 WR 101</b>

- Recommended for cows
- Dam is one of my favorite range efficient females, moderate with beautiful rib dimension and udder quality
- Nice genetic package, he'll transmit a lot of range durability and fleshing ability

**40****Ox Bow Resume 3339**

<b>Bull</b>	Tag 6103	Calved 2/13/13	Reg. 17663911
S A V Final Answer 0035#	Sitz Traveler 8180#	Indiv. Performance	
<b>Boyd Resume 9008</b>	S A V Emulous 8145	Birth Wt	<b>92</b>
Boyd Forever Lady 5125	Wulffs Ext 6106#	205 Wt	<b>649</b>
	S V F Forever Lady 57D	365 Wt	<b>1198</b>
O C C Emblazon 854E#	D H D Traveler 6807#	IMF	<b>4.11/120</b>
<b>Ox Bow Pride 6103</b>	Dixie Erica of C H 1019	REA	<b>14.2/98</b>
Ox Bow Pride 422	Hylina Right Time 338#	Rib Fat	<b>0.31/97</b>
	Ox Bow Pride 0035#	Dam Production	
<b>+9</b>	<b>+1.8</b>	<b>+46</b>	<b>+22</b>
<b>+80</b>	<b>31.97</b>	<b>56.82</b>	<b>6 WR 97</b>

- Recommended for larger heifers or cows
- Moderate, easy fleshing & efficient, good uddered Emblazon dam
- Moderate with a very attractive pattern, remarkable top & quarter

**41****Ox Bow Resume 3362**

<b>Bull</b>	Tag 124	Calved 2/17/13	Reg. 17682232
S A V Final Answer 0035#	Sitz Traveler 8180#	Indiv. Performance	
<b>Boyd Resume 9008</b>	S A V Emulous 8145	Birth Wt	<b>98</b>
Boyd Forever Lady 5125	Wulffs Ext 6106#	205 Wt	<b>656</b>
	S V F Forever Lady 57D	365 Wt	<b>1174</b>
G A R Example 3204#	N Bar Emulation EXT#	IMF	<b>3.20/94</b>
<b>Ox Bow Forever Lady 124</b>	G A R Bando 10	REA	<b>14.9/103</b>
Ox Bow Forever Lady 933	V D A R Vision 243#	Rib Fat	<b>0.27/84</b>
	Gdar Forever Lady 6180	Dam Production	
<b>+7</b>	<b>+2.3</b>	<b>+38</b>	<b>+24</b>
<b>+73</b>	<b>24.77</b>	<b>57.28</b>	<b>11 WR 98</b>

- Recommended for cows
- Dam has 11 births @ 99
- 13 year old dam sets the standard for range durability & function
- This should be a real female maker, we currently have 5 Emblazon bred maternal sisters in production



**Lot 42**

## 42 Ox Bow Final Answer 3233

<b>Bull</b>		Tag 1139	Calved 1/27/13	Reg. 17663847
S A V Final Answer 0035#	Sitz Traveler 8180#	Indiv. Performance		
<b>Ox Bow Final Answer 1212</b>	S A V Emulous 8145	Birth Wt	<b>72</b>	
Ox Bow Manor 5155	N Bar Emulation EXT#	205 Wt	<b>768</b>	
	Ox Bow Manor 918#	365 Wt	<b>1411</b>	
		IMF	<b>4.33/127</b>	
Sitz Dash 10277	Sitz Upward 307R#	REA	<b>14.4/101</b>	
<b>Ox Bow Blackbird 1139</b>	Sitz Everelda Entense 2665	Rib Fat	<b>0.35/121</b>	
Ox Bow Blackbird 930	Sitz Rainmaker 9723	Dam Production		
	Ox Bow Blackbird 7123	<b>+12</b>	<b>-1.2</b>	<b>+59</b>
		<b>+28</b>	<b>+96</b>	<b>43.03</b>
		<b>78.56</b>	<b>1 WR 119</b>	

- 1/2 interest and full possession sells
- Recommended for heifers or cows
- Attractive, moderate and easy fleshing dam from our top performance cow family
- A tremendous Herd Sire prospect & one of the best we've raised
- He puts it all together, size moderation, fleshing ability, super structure and udder quality along with low birth weight, high performance and carcass quality



**Lot 43**

## 43 Ox Bow Final Answer 3363

<b>Bull</b>		Tag 645	Calved 2/1/13	Reg. 17682233
S A V Final Answer 0035#	Sitz Traveler 8180#	Indiv. Performance		
<b>Ox Bow Final Answer 1212</b>	S A V Emulous 8145	Birth Wt	<b>95</b>	
Ox Bow Manor 5155	N Bar Emulation EXT#	205 Wt	<b>740</b>	
	Ox Bow Manor 918#	365 Wt	<b>1247</b>	
		IMF	<b>3.45/101</b>	
Woodhill Foresight#	Papa Forte 1921#	REA	<b>13.9/96</b>	
<b>Ox Bow Polly 645#</b>	Bon View Gammer 85	Rib Fat	<b>0.28/88</b>	
Ox Bow Polly 210	Vermilion Dateline 7078#	Dam Production		
	V D A R Polly 5022	<b>+5</b>	<b>+1.8</b>	<b>+51</b>
		<b>+27</b>	<b>+91</b>	<b>32.67</b>
		<b>67.38</b>	<b>5 WR 105</b>	

- Recommended for cows
- Very correct and good uddered high performance Pathfinder dam
- Loaded with performance with Final Answer, Foresight and VRD in the pedigree
- Very long, deep sided bull with strong top and quarter

## 44 Ox Bow Final Answer 3300

<b>Bull</b>		Tag 7177	Calved 2/7/13	Reg. 17663886
S A V Final Answer 0035#	Sitz Traveler 8180#	Indiv. Performance		
<b>Ox Bow Final Answer 1212</b>	S A V Emulous 8145	Birth Wt	<b>90</b>	
Ox Bow Manor 5155	N Bar Emulation EXT#	205 Wt	<b>688</b>	
	Ox Bow Manor 918#	365 Wt	<b>1203</b>	
		IMF	<b>3.25/95</b>	
Redland Emblazon 3234	O C C Emblazon 854E#	REA	<b>14.3/99</b>	
<b>Ox Bow Barbaramere Jet 7177</b>	Redland Edella 2079	Rib Fat	<b>0.30/94</b>	
Ox Bow Barbaramere Jet 494	Woodhill Foresight#	Dam Production		
	Ox Bow Barbaramere Jet 229#	<b>+8</b>	<b>+0.5</b>	<b>+47</b>
		<b>+24</b>	<b>+76</b>	<b>35.98</b>
		<b>52.68</b>	<b>4 WR 101</b>	

- Recommended for larger heifers or cows
- Solid producing cow family, grand dam has 6 births @ 94, 6 weaned @ 102, Pathfinder great grand dam 10 births @ 98 10 weaned @ 104
- Length, middle, and muscle to really make pounds



**Miss Wix 2027 of McCumber**  
Grand Dam of Lot 45

## 45 Ox Bow Final Answer 3235

<b>Bull</b>		Tag 1152	Calved 2/8/13	Reg. 17663849
S A V Final Answer 0035#	Sitz Traveler 8180#	Indiv. Performance		
<b>Ox Bow Final Answer 1212</b>	S A V Emulous 8145	Birth Wt	<b>80</b>	
Ox Bow Manor 5155	N Bar Emulation EXT#	205 Wt	<b>736</b>	
	Ox Bow Manor 918#	365 Wt	<b>1258</b>	
		IMF	<b>4.25/124</b>	
O C C Missing Link 830M	O C C Headliner 661H	REA	<b>12.1/83</b>	
<b>Ox Bow Miss Wix 1152</b>	O C C Dixie Erica 946K	Rib Fat	<b>0.47/147</b>	
Miss Wix 2027 of Mc Cumber#	Garrison 8128 Dynamite	Dam Production		
	Miss Wix 352 of Mc Cumber#	<b>na</b>	<b>I-0.7</b>	<b>I+46</b>
		<b>I+27</b>	<b>I+77</b>	<b>36.88</b>
		<b>54.75</b>	<b>1 WR 106</b>	

- Recommended for heifers or cows
- High fertility and production cow family, grand dam is a sixth generation Pathfinder cow
- Moderate and clean made with extra quarter and stifle muscle



**Ox Bow Polly 645**  
Dam of Lot 43



**Ox-Bow-Manor-485**  
Foundation Cow Behind Lot 46

**48 Ox Bow Final Answer 3279**  
Bull Tag 9106 Calved 2/22/13 Reg. 17663872

S A V Final Answer 0035#	Sitz Traveler 8180#	Indiv. Performance
<b>Ox Bow Final Answer 1212</b>	S A V Emulous 8145	Birth Wt <b>84</b>
Ox Bow Manor 5155	N Bar Emulation EXT#	205 Wt <b>618</b>
	Ox Bow Manor 918#	365 Wt <b>1186</b>
	O C C Emblazon 854E#	IMF <b>5.11/150</b>
<b>Ox Bow Barbaramere Jet 9106</b>	D H D Traveler 6807#	REA <b>13.3/94</b>
Ox Bow Barbaramere Jet 494	Dixie Erica of C H 1019	Rib Fat <b>0.34/117</b>
	Woodhill Foresight#	
	Ox Bow Barbaramere Jet 229#	

CED	BW	WW	Milk	YW	\$W	\$B	Dam Production
<b>+11</b>	<b>-1.0</b>	<b>+46</b>	<b>+21</b>	<b>+77</b>	<b>35.16</b>	<b>58.16</b>	<b>2 WR 96</b>

- Recommended for heifers or cows
- Generations of low birth weight, G. Dam: 6 births @ 94, G.G. Dam 10 births @ 98
- Moderate with the boiler capacity and fleshing ability to thrive

**46 Ox Bow Final Answer 3217**  
Bull Tag 120 Calved 2/9/13 Reg. 17663837

S A V Final Answer 0035#	Sitz Traveler 8180#	Indiv. Performance
<b>Ox Bow Final Answer 1212</b>	S A V Emulous 8145	Birth Wt <b>75</b>
Ox Bow Manor 5155	N Bar Emulation EXT#	205 Wt <b>640</b>
	Ox Bow Manor 918#	365 Wt <b>1077</b>
	Sitz Upward 307R#	IMF <b>3.41/100</b>
<b>Ox Bow Manor 120</b>	Sitz Everelda Entense 2665	REA <b>14.1/99</b>
Ox Bow Manor 848	S A V 8180 Traveler 004#	Rib Fat <b>0.34/117</b>
	Ox Bow Manor 485	

CED	BW	WW	Milk	YW	\$W	\$B	Dam Production
<b>+11</b>	<b>-0.3</b>	<b>+48</b>	<b>+26</b>	<b>+84</b>	<b>35.26</b>	<b>53.16</b>	<b>1 WR 99</b>

- Recommended for heifers or cows
- Our top cow family top and bottom of the pedigree
- Generations of easy keeping well above average production females
- Very moderate with a calving ease head and shoulder



**Ox-Bow-Buena-786**  
Grand Dam of Lot 47

**49 Ox Bow Final Answer 3318**  
Bull Tag 9160 Calved 2/23/13 Reg. 17663900

S A V Final Answer 0035#	Sitz Traveler 8180#	Indiv. Performance
<b>Ox Bow Final Answer 1212</b>	S A V Emulous 8145	Birth Wt <b>71</b>
Ox Bow Manor 5155	N Bar Emulation EXT#	205 Wt <b>607</b>
	Ox Bow Manor 918#	365 Wt <b>1132</b>
	Redland Emblazon 3234	IMF <b>3.17/93</b>
<b>Ox Bow Manor 9160</b>	Redland Edella 2079	REA <b>13.8/97</b>
Ox Bow Manor 334#	N Bar Emulation EXT#	Rib Fat <b>0.34/117</b>
	Ox Bow Manor 037	

CED	BW	WW	Milk	YW	\$W	\$B	Dam Production
<b>+13</b>	<b>-2.3</b>	<b>+43</b>	<b>+23</b>	<b>+72</b>	<b>36.27</b>	<b>43.64</b>	<b>3 WR 93</b>

- Recommended for heifers or cows
- Can't miss calving ease, Dam has 3 births @ 89
- Excellent EXT daughters top and bottom of pedigree are 7/8 blood sisters from our top cow family
- Moderate with a smooth shoulder, he'll transmit tremendous udder quality and range function



**Ox-Bow-Manor-933**  
Dam of Lot 50 and of Ox Bow Revival 1313

**47 Ox Bow Final Answer 3205**  
Bull Tag 145 Calved 2/15/13 Reg. 17663831

S A V Final Answer 0035#	Sitz Traveler 8180#	Indiv. Performance
<b>Ox Bow Final Answer 1212</b>	S A V Emulous 8145	Birth Wt <b>72</b>
Ox Bow Manor 5155	N Bar Emulation EXT#	205 Wt <b>659</b>
	Ox Bow Manor 918#	365 Wt <b>1128</b>
	Papa Forte 1921#	IMF <b>4.52/133</b>
<b>Ox Bow Buena 145</b>	Bon View Gammer 85	REA <b>13.3/94</b>
Ox Bow Buena 786#	O C C Legend 616L	Rib Fat <b>0.30/103</b>
	Ox Bow Buena 430	

CED	BW	WW	Milk	YW	\$W	\$B	Dam Production
<b>+10</b>	<b>-0.6</b>	<b>+50</b>	<b>+25</b>	<b>+85</b>	<b>36.94</b>	<b>58.91</b>	<b>1 WR 102</b>

- Recommended for heifers or cows
- Pathfinder grand dam by Legend has 4 weaned @ 107, foundation Buena female is double bred Traveler 124 GDAR
- Very moderate with the efficient body type to excel in a dry grass environment

**50 Ox Bow Final Answer 3345**  
Bull Tag 933 Calved 3/3/13 Reg. 17663914

S A V Final Answer 0035#	Sitz Traveler 8180#	Indiv. Performance
<b>Ox Bow Final Answer 1212</b>	S A V Emulous 8145	Birth Wt <b>83</b>
Ox Bow Manor 5155	N Bar Emulation EXT#	205 Wt <b>638</b>
	Ox Bow Manor 918#	365 Wt <b>1252</b>
	Sitz Alliance 6595#	IMF <b>3.51/103</b>
<b>Ox Bow Manor 933</b>	Ext of Conanga 6790	REA <b>14.6/103</b>
Ox Bow Manor 7105#	K C F Bennett Index	Rib Fat <b>0.33/114</b>
	Ox Bow Manor 335	

CED	BW	WW	Milk	YW	\$W	\$B	Dam Production
<b>+9</b>	<b>-0.8</b>	<b>+43</b>	<b>+26</b>	<b>+79</b>	<b>34.42</b>	<b>67.15</b>	<b>3 WR 103</b>

- Recommended for heifers or cows
- Outstanding structure and maternal function cow family, dam is the dam of Ox Bow Revival 1313
- Younger bull with a very attractive profile, clean fronted with ample capacity and muscle



**Ox-Bow-Final-Answer-1212**



**Ox-Bow-Manor-5155**  
Dam of Ox Bow Final Answer 1212

**51 Ox Bow Final Answer 3383**  
Bull Tag 070 Calved 3/17/13 Reg. 17663932

S A V Final Answer 0035#	Sitz Traveler 8180#	Indiv. Performance
<b>Ox Bow Final Answer 1212</b>	S A V Emulous 8145	Birth Wt <b>96</b>
Ox Bow Manor 5155	N Bar Emulation EXT#	205 Wt <b>701</b>
	Ox Bow Manor 918#	365 Wt
	Sitz Upward 307R#	IMF /
<b>Ox Bow Eisa Evergreen 070</b>	Sitz Everelda Entense 2665	REA /
Ox Bow Eisa Evergreen 7112	Redland Emblazon 3234	Rib Fat /
	Ox Bow Eisa Evergreen 499	

CED	BW	WW	Milk	YW	\$W	\$B	Dam Production
<b>+5</b>	<b>+1.9</b>	<b>+50</b>	<b>+26</b>	<b>+82</b>	<b>34.91</b>	<b>58.54</b>	<b>2 WR 105</b>

- Recommended for cows
- Younger bull with a lot of performance
- May be the longest sided bull in the sale, length adds pounds

**54 Ox Bow Final Answer 3273**  
Bull Tag 8134 Calved 2/6/13 Reg. 17663868

S A V Final Answer 0035#	Sitz Traveler 8180#	Indiv. Performance
<b>Ox Bow Final Answer 1304</b>	S A V Emulous 8145	Birth Wt <b>74</b>
Ox Bow Forever Lady 966	Woodhill Foresight#	205 Wt <b>671</b>
	Ox Bow Forever Lady 612	365 Wt <b>1177</b>
	O C C Magnitude 805M#	IMF <b>3.43/101</b>
<b>Ox Bow Polly 8134</b>	O C C Emblazon 854E#	REA <b>14.0/99</b>
Ox Bow Polly 6118	O C C Pollyanna 878G	Rib Fat <b>0.30/103</b>
	S A V 8180 Traveler 004#	
	Ox Bow Polly 4120	

CED	BW	WW	Milk	YW	\$W	\$B	Dam Production
<b>+10</b>	<b>-0.8</b>	<b>+53</b>	<b>+21</b>	<b>+90</b>	<b>36.69</b>	<b>58.83</b>	<b>4 WR 99</b>

- Recommended for heifers or cows
- Third dam by Right Time
- Strong straight top and good square hip, lots of fleshing ability bred in

**52 Ox Bow Final Answer 3380**  
Bull Tag 7123 Calved 3/28/13 Reg. 17663931

S A V Final Answer 0035#	Sitz Traveler 8180#	Indiv. Performance
<b>Ox Bow Final Answer 1212</b>	S A V Emulous 8145	Birth Wt <b>68</b>
Ox Bow Manor 5155	N Bar Emulation EXT#	205 Wt <b>683</b>
	Ox Bow Manor 918#	365 Wt
	D H D Traveler 6807#	IMF /
<b>Ox Bow Blackbird 7123</b>	Dixie Erica of C H 1019	REA /
Ox Bow Blackbird 5183	CAR Tracker 321	Rib Fat /
	Ox Bow Blackbird 256	

CED	BW	WW	Milk	YW	\$W	\$B	Dam Production
<b>+13</b>	<b>-1.8</b>	<b>+48</b>	<b>+25</b>	<b>+80</b>	<b>38.31</b>	<b>49.74</b>	<b>5 WR 104</b>

- Recommended for heifers or cows
- Dam has 5 births @ 99
- Youngest bull in the sale, moderate and thick made with a lot of middle

**55 Ox Bow Final Answer 3334**  
Bull Tag 927 Calved 2/9/13 Reg. 17663908

S A V Final Answer 0035#	Sitz Traveler 8180#	Indiv. Performance
<b>Ox Bow Final Answer 1304</b>	S A V Emulous 8145	Birth Wt <b>87</b>
Ox Bow Forever Lady 966	Woodhill Foresight#	205 Wt <b>631</b>
	Ox Bow Forever Lady 612	365 Wt <b>1122</b>
	N Bar Emulation EXT#	IMF <b>3.95/116</b>
<b>Ox Bow Eisa Evergreen 927</b>	G A R Bando 10	REA <b>13.8/97</b>
Ox Bow Eisa Evergreen 008	V D A R Vision 243#	Rib Fat <b>0.25/86</b>
	Ox Bow Eisa Evergreen 869	

CED	BW	WW	Milk	YW	\$W	\$B	Dam Production
<b>+9</b>	<b>+0.5</b>	<b>+46</b>	<b>+24</b>	<b>+83</b>	<b>32.00</b>	<b>57.89</b>	<b>3 WR 96</b>

- Recommended for heifers or cows
- Note the dam is the grand dam of Lot 53, add uniformity with these 3/4 blood brothers
- Smooth shouldered with a lot of thickness and eye appeal

**53 Ox Bow Final Answer 3227**  
Bull Tag 1111 Calved 1/26/13 Reg. 17663842

S A V Final Answer 0035#	Sitz Traveler 8180#	Indiv. Performance
<b>Ox Bow Final Answer 1304</b>	S A V Emulous 8145	Birth Wt <b>68</b>
Ox Bow Forever Lady 966	Woodhill Foresight#	205 Wt <b>660</b>
	Ox Bow Forever Lady 612	365 Wt <b>1215</b>
	Sitz Upward 307R#	IMF <b>3.33/98</b>
<b>Ox Bow Eisa Evergreen 1111</b>	Sitz Everelda Entense 2665	REA <b>13.6/96</b>
Ox Bow Eisa Evergreen 927	G A R Example 3204#	Rib Fat <b>0.36/124</b>
	Ox Bow Eisa Evergreen 008	

CED	BW	WW	Milk	YW	\$W	\$B	Dam Production
<b>+14</b>	<b>-1.7</b>	<b>+52</b>	<b>+25</b>	<b>+89</b>	<b>38.53</b>	<b>65.94</b>	<b>1 WR 102</b>

- Recommended for heifers or cows
- Sire was our top selling Final Answer son in 2012
- Longevity, EXT granddaughters working in excess of 13 years top and bottom of pedigree
- Very complete, smoothness, rib and muscle



**Ox-Bow-Eisa-Evergreen-008**  
Foundation Dam behind Lot 53





# O C C Paxton 730P

Calved 3/14/04

Reg. 14940735

Basin Rainmaker 654X#  
**O C C Focus 813F**  
Dixie Erica of C H 1019

Basin Rainmaker D S 380U#  
Basin Bardolene 423U  
PBC 707 1M F0203#  
Dixie Erica of C H 615

O C C Great Plains 943G#  
**O C C Blackbird 736K**  
O C C Blackbird 824G

N Bar Emulation EXT#  
Dixie Erica of C H 1019  
O C C Anchor 771A#  
O C C Blackbird 778A

BW	WW	Milk	YW	Scrotal	Marb	RE	Fat
-0.8	+45	+14	+73	+0.40	+0.43	+0.87	+0.023
CED	SEN	SW	SF	SG	SB		
+11	31.21	51.61	16.10	36.96	51.97		



**11**  
Sons Sell

A moderate framed bull that transmits tremendous fleshing ability, muscle, and extra volume. He is one of the highest \$EN sires of the breed indicating his ability to sire very efficient females. He is a negative birth weight sire with a +11 CED who sires big Ribeye. Daughters have exceptional udders and are very easy fleshing.



# Ox Bow Paxton 3201

Tag 112

Calved 1/19/13

Reg. 17670473

**Bull**  
O C C Focus 813F  
**O C C Paxton 730P**  
O C C Blackbird 736K

Basin Rainmaker 654X#  
Dixie Erica of C H 1019  
O C C Great Plains 943G#  
O C C Blackbird 824G

Indiv. Performance  
Birth Wt **70**  
205 Wt **700**  
365 Wt **1177**  
IMF **3.19/94**  
REA **14.4/101**  
Rib Fat **0.23/79**

Woodhill Foresight#  
**Ox Bow Lucy 112**  
Ox Bow Lucy 787

Papa Forte 1921#  
Bon View Gammer 85  
B C C Bushwacker 41-93#  
Ox Bow Lucy 230

Dam Production  
**1 WR 109**

CED	BW	WW	Milk	YW	\$W	\$B	Dam Production
+10	-0.7	+54	+20	+87	38.47	59.86	1 WR 109

- Recommended for heifers or cows
- 3 generations of low birth weight females behind him, third dam by Rito 616
- Cow family developed from FSHK-VDAR genetics, maternal giants Rito 2100, Traveler 124 and Rito 054 in the background
- Moderate and deep bodied, easy fleshing dam with a near perfect udder



**Lot 59**



# Ox Bow Paxton 3202

Tag 1106

Calved 1/20/13

Reg. 17670471

**Bull**  
O C C Focus 813F  
**O C C Paxton 730P**  
O C C Blackbird 736K

Basin Rainmaker 654X#  
Dixie Erica of C H 1019  
O C C Great Plains 943G#  
O C C Blackbird 824G

Indiv. Performance  
Birth Wt **70**  
205 Wt **664**  
365 Wt **1125**  
IMF **2.69/79**  
REA **14.5/102**  
Rib Fat **0.18/62**

S A V Final Answer 0035#  
**Ox Bow Lucy 1106**  
Ox Bow Lucy 937

Sitz Traveler 8180#  
S A V Emulous 8145  
Woodhill Foresight#  
Ox Bow Lucy 112

Dam Production  
**1 WR 103**

CED	BW	WW	Milk	YW	\$W	\$B	Dam Production
+12	-1.2	+51	+19	+86	35.94	42.70	1 WR 103

- Recommended for heifers or cows
- Three generations of very low birth females
- Moderate with a smooth calving ease front



# Ox Bow Paxton 3304

Tag 8140

Calved 2/2/13

Reg. 17670493

**Bull**  
O C C Focus 813F  
**O C C Paxton 730P**  
O C C Blackbird 736K

Basin Rainmaker 654X#  
Dixie Erica of C H 1019  
O C C Great Plains 943G#  
O C C Blackbird 824G

Indiv. Performance  
Birth Wt **85**  
205 Wt **627**  
365 Wt **1181**  
IMF **2.15/63**  
REA **14.6/103**  
Rib Fat **0.30/103**

21AR Coal Bank C014#  
**Ox Bow Barbaramere Jet 8140**  
Ox Bow Barbaramere Jet 6102

Basin Max 602C#  
Leachman Lass 5014#  
KMK Alliance 6595 I87#  
Ox Bow Barbaramere Jet 420

Dam Production  
**4 WR 100**

CED	BW	WW	Milk	YW	\$W	\$B	Dam Production
+8	+0.6	+51	+19	+87	33.41	58.09	4 WR 100

- Recommended for larger heifers or cows
- High performance Alliance I87 grand dam has 5 weaned @107
- Really big bodied bull with muscle to match, he'll produce a lot of pounds



# Ox Bow Paxton 3228

Tag 1149

Calved 1/31/13

Reg. 17670476

**Bull**  
O C C Focus 813F  
**O C C Paxton 730P**  
O C C Blackbird 736K

Basin Rainmaker 654X#  
Dixie Erica of C H 1019  
O C C Great Plains 943G#  
O C C Blackbird 824G

Indiv. Performance  
Birth Wt **84**  
205 Wt **654**  
365 Wt **1216**  
IMF **3.23/95**  
REA **14.1/99**  
Rib Fat **0.24/83**

Sitz Rainmaker 9723  
**Ox Bow Manor 1149**  
Ox Bow Manor 334#

Sitz Rainmaker 6169#  
Sitz Miss Burgess 1591#  
N Bar Emulation EXT#  
Ox Bow Manor 037

Dam Production  
**1 WR 101**

CED	BW	WW	Milk	YW	\$W	\$B	Dam Production
+6	+2.0	+46	+17	+77	29.08	54.35	1 WR 101

- Recommended for larger heifers or cows
- Top cow family, strong Emulation influence insures udder quality and range durability
- A bit bigger framed Paxton with ample rib and good top and quarter design



**Ox-Bow Forever Lady 3113**  
Paxton Daughter

# Efficient Maternal Angus Excelli

Over the past 24 years, Ox Bow Ranch has worked to develop a uniform, efficient, performance-oriented, maternal cow herd bred to meet the challenges of our rough country. This environment creates opportunities to identify the superior genetics needed to work when times are tough.

Low rainfall and rocky, coarse soils frequently require our cow herd to work under drought or near drought conditions. Our cattle must possess sound foot and leg structure to travel long distances over rough and rocky terrain between water and grass. The cow herd is managed to maximize grazing days and minimize stored forage use. This low input philosophy requires that the females be moderate-framed and deep-ribbed. We select for broody individuals with the fertility and fleshing ability to maintain a strong pregnancy during lactation, and gain afterward on dry, low quality forage.

Our cow herd is one of the most predictable and reliable purebred range cow herds you will find, the end result of our intensive A.I. program. We consistently use high accuracy proven sires and time-tested bloodlines. The durability of our genetic base is the result of blending advanced Emulation EXT and Traveler 6807 lines. These sires set the industry standard for balance and efficiency. We have strongly embraced genetic advancements in low birth-weight/high-performance cattle with strong carcass merit. These cattle will reduce your labor input, add pounds of profit, and provide you with great replacement females.

Few purebred ranch environments challenge the cow herd like ours does. When you buy a bull from us, you are buying 24 years of strong selection pressure for moderately sized, low input, heavily muscled, performance cattle.

***A whole genetic package - balanced for profit.***

O  
X



# ng in a Demanding Environment



## 60 Ox Bow Paxton 3357

<b>Bull</b>	Tag 619	Calved 2/2/13	Reg. 17670500
O C C Focus 813F	Basin Rainmaker 654X#	Indiv. Performance	
O C C Paxton 730P	Dixie Erica of C H 1019	Birth Wt	93
O C C Blackbird 736K	O C C Great Plains 943G#	205 Wt	745
	O C C Blackbird 824G	365 Wt	1251
	Leachman Right Time#	IMF	4.20/123
Hyline Right Time 338#	Hyline Pride 265	REA	15.4/106
Ox Bow Fanny 619#	G D A R Traveler 561#	Rib Fat	0.21/66
Ox Bow Fanny 3136	Ox Bow Fanny 128	CED BW WW Milk YW \$W \$B Dam Production	
		+8 +1.1 +49 +20 +80 37.20 70.88 5 WR 105	

- Recommended for cows
- Pathfinder dam, OCC blood on our Right Time 338 daughters has been a very good combination
- Moderate with expansive rib design and extra thickness

## 61 Ox Bow Paxton 3295

<b>Bull</b>	Tag 640	Calved 2/3/13	Reg. 17670497
O C C Focus 813F	Basin Rainmaker 654X#	Indiv. Performance	
O C C Paxton 730P	Dixie Erica of C H 1019	Birth Wt	83
O C C Blackbird 736K	O C C Great Plains 943G#	205 Wt	671
	O C C Blackbird 824G	365 Wt	1202
	Paramont Ambush 2172#	IMF	3.21/94
B C C Bushwacker 41-93#	R C Anita T Bando 918903	REA	14.1/97
Ox Bow Willow 640	Leachman Oxbow	Rib Fat	0.30/94
Ox Bow Willow 249	Ox Bow Willow 038	CED BW WW Milk YW \$W \$B Dam Production	
		+8 +0.3 +46 +20 +73 36.91 54.21 6 WR 101	

- Recommended for heifers or cows
- Very low birth Bushwacker dam with 6 births @ 89
- Moderate with super efficient body type to work in tough environments



**Ox-Bow-Blackcap-Effie-5146**  
Grand Dam of Lot 62

## 62 Ox Bow Paxton 3351

<b>Bull</b>	Tag 0114	Calved 2/3/13	Reg. 17670481
O C C Focus 813F	Basin Rainmaker 654X#	Indiv. Performance	
O C C Paxton 730P	Dixie Erica of C H 1019	Birth Wt	81
O C C Blackbird 736K	O C C Great Plains 943G#	205 Wt	667
	O C C Blackbird 824G	365 Wt	1249
	Papa Forte 1921#	IMF	3.15/92
Woodhill Foresight#	Bon View Gammer 85	REA	15.1/106
Ox Bow Blackcap Effie 0114	G A R Example 3204#	Rib Fat	0.34/117
Ox Bow Blackcap Effie 5146	Ox Bow Blackcap Effie 356	CED BW WW Milk YW \$W \$B Dam Production	
		+8 +0.5 +49 +20 +81 34.43 69.75 2 WR 108	

- Recommended for heifers or cows
- Very complete and attractive patterned, strong top and quarter width with capacity

## 63 Ox Bow Paxton 3355

<b>Bull</b>	Tag 579	Calved 2/3/13	Reg. 17670502
O C C Focus 813F	Basin Rainmaker 654X#	Indiv. Performance	
O C C Paxton 730P	Dixie Erica of C H 1019	Birth Wt	73
O C C Blackbird 736K	O C C Great Plains 943G#	205 Wt	737
	O C C Blackbird 824G	365 Wt	1219
	N Bar Emulation EXT#	IMF	3.25/95
B A R Ext Traveler 205#	B A R Queen Traveler 3015#	REA	15.7/108
Ox Bow Lucy 579#	Sitz Traveler 7594	Rib Fat	0.37/116
Ox Bow Lucy 379	VDAR Lucy 8063	CED BW WW Milk YW \$W \$B Dam Production	
		+8 +1.3 +47 +21 +77 43.06 50.20 5 WR 107	

- Recommended for heifers or cows
- Pathfinder dam is one of our highest volume females
- Moderate with boiler capacity and thickness

## 64 Ox Bow Paxton 3285

<b>Bull</b>	Tag 6118	Calved 2/6/13	Reg. 17670501
O C C Focus 813F	Basin Rainmaker 654X#	Indiv. Performance	
O C C Paxton 730P	Dixie Erica of C H 1019	Birth Wt	81
O C C Blackbird 736K	O C C Great Plains 943G#	205 Wt	615
	O C C Blackbird 824G	365 Wt	1079
	Sitz Traveler 8180#	IMF	3.41/100
S A V 8180 Traveler 004#	Boyd Forever Lady 8003	REA	14.8/102
Ox Bow Polly 6118	Leachman Right Time#	Rib Fat	0.23/72
Ox Bow Polly 4120	V D A R Polly 5022	CED BW WW Milk YW \$W \$B Dam Production	
		+10 +0.1 +39 +17 +69 28.10 46.94 5 WR 95	

- Recommended for heifers or cows
- Dam has 5 births with a ratio of 99
- Moderate with strong breed character and desirable muscle pattern

## 65 Ox Bow Paxton 3574

<b>Bull</b>	Tag 901	Calved 2/7/13	Reg. 17670490
O C C Focus 813F	Basin Rainmaker 654X#	Indiv. Performance	
O C C Paxton 730P	Dixie Erica of C H 1019	Birth Wt	85
O C C Blackbird 736K	O C C Great Plains 943G#	205 Wt	646
	O C C Blackbird 824G	365 Wt	1198
	Papa Forte 1921#	IMF	3.80/111
Woodhill Foresight#	Bon View Gammer 85	REA	13.9/98
Ox Bow Queenette 901	G A R Expectation 4915#	Rib Fat	0.28/97
Ox Bow Queenette 4144	Ox Bow Queenette 813	CED BW WW Milk YW \$W \$B Dam Production	
		+9 +0.2 +46 +18 +77 32.48 67.86 3 WR 96	

- Recommended for heifers or cows
- Three generations of low birth weight females, dam has 3 births at 97
- Moderate framed with a wide top and thick quarter

## 66 Ox Bow Paxton 3275

<b>Bull</b>	Tag 8113	Calved 2/11/13	Reg. 17670495
O C C Focus 813F	Basin Rainmaker 654X#	Indiv. Performance	
O C C Paxton 730P	Dixie Erica of C H 1019	Birth Wt	97
O C C Blackbird 736K	O C C Great Plains 943G#	205 Wt	655
	O C C Blackbird 824G	365 Wt	1225
	N Bar Emulation EXT#	IMF	3.48/102
G A R Example 3204#	G A R Bando 10	REA	15.4/108
Ox Bow Blackbird 8113	V D A R New Trend 779	Rib Fat	0.36/124
Ox Bow Blackbird 638	Ox Bow Blackbird 308	CED BW WW Milk YW \$W \$B Dam Production	
		+5 +1.8 +46 +18 +75 30.89 67.40 4 WR 101	

- Recommended for cows
- Donor grand dam has 10 weaned @ 105
- Moderate with added depth and spring of rib, a stout beef bull



## Sitz Dash 10277

Calved 2/5/07

Reg. 15656868

Connealy Onward#  
Sitz Upward 307R#  
Sitz Henrietta Pride 81M

Connealy Lead On#  
Altune of Conanga 6104  
Sitz Value 7097#  
Sitz Henrietta Pride 1370

O C C Emblazon 854E#  
Sitz Everelda Entense 2665  
Sitz Everelda Entense 4948

D H D Traveler 6807#  
Dixie Erica of C H 1019  
High Valley 4C6 Ambush#  
Sitz Everelda Entense 023

BW	WW	Milk	YW	Scrotal	Marb	RE	Fat
-0.2	+51	+27	+84	+1.12	+0.44	+80	+0.021
CED	\$EN	\$W	\$F	\$G	\$B		
+14	11.15	58.59	26.79	33.04	80.61		



**12  
Sons &  
Grandsons  
Sell**

A negative birth weight bull that is extremely easy calving. Daughters are attractive and easy doing with nice udders. Dash has exceptional phenotype with smoothness, rib, and a strong top and hip. He is out of a great cow family and produces top replacement females. A large REA bull with a +14 CED.



## Ox Bow Dash 3204

Tag 1144

Calved 1/26/13

Reg. 17663830

Sitz Upward 307R#  
Sitz Dash 10277  
Sitz Everelda Entense 2665

Connealy Onward#  
Sitz Henrietta Pride 81M  
O C C Emblazon 854E#  
Sitz Everelda Entense 4948

Indiv. Performance	
Birth Wt	80
205 Wt	643
365 Wt	1233
IMF	3.41/100
REA	14.0/99
Rib Fat	0.34/117

Sitz Rainmaker 9723  
Ox Bow Manor 1144  
Ox Bow Manor 334#

Sitz Rainmaker 6169#  
Sitz Miss Burgess 1591#  
N Bar Emulation EXT#  
Ox Bow Manor 037

CED	BW	WW	Milk	YW	\$W	\$B	Dam Production
+9	+1.3	+47	+24	+80	33.31	66.04	1 WR 100

- Recommended for heifers or cows
- Pathfinder grand dam by EXT, great grand dam produced 3 Pathfinder daughters
- Bigger framed with well proportioned meat and middle



## Ox Bow Dash 3564

Tag 04

Calved 2/6/13

Reg. 17663923

Sitz Upward 307R#  
Sitz Dash 10277  
Sitz Everelda Entense 2665

Connealy Onward#  
Sitz Henrietta Pride 81M  
O C C Emblazon 854E#  
Sitz Everelda Entense 4948

Indiv. Performance	
Birth Wt	88
205 Wt	662
365 Wt	1300
IMF	3.24/95
REA	13.8/97
Rib Fat	0.22/76

Ox Bow Example 4215  
Ox Bow Lady Ida 04  
Ox Bow Lady Ida 825

G A R Example 3204#  
Ox Bow Lucy 965  
Woodhill Foresight#  
Ox Bow Lady Ida 558#

CED	BW	WW	Milk	YW	\$W	\$B	Dam Production
+7	+2.2	+55	+25	+88	36.42	79.85	1 WR 103

- Recommended for larger heifers or cows
- One of our easiest fleshing cow lines, Pathfinder 3rd dam by Emblazon
- Very moderate with remarkable base width and muscle



## Ox Bow Dash 3294

Tag 6123

Calved 1/29/13

Reg. 17663882

Sitz Upward 307R#  
Sitz Dash 10277  
Sitz Everelda Entense 2665

Connealy Onward#  
Sitz Henrietta Pride 81M  
O C C Emblazon 854E#  
Sitz Everelda Entense 4948

Indiv. Performance	
Birth Wt	93
205 Wt	733
365 Wt	1202
IMF	3.17/93
REA	14.0/97
Rib Fat	0.31/97

S A V 8180 Traveler 004#  
Ox Bow Polly 6123  
Ox Bow Polly 4130

Sitz Traveler 8180#  
Boyd Forever Lady 8003  
Leachman Right Time#  
V D A R Polly 5022

CED	BW	WW	Milk	YW	\$W	\$B	Dam Production
+8	+1.6	+50	+25	+83	34.94	67.62	5 WR 98

- Recommended for cows
- Dam is a big bodied powerful cow
- Great eye appeal in this deep and thick beef bull



## Ox Bow Dash 3274

Tag 4122

Calved 2/11/13

Reg. 17663869

Sitz Upward 307R#  
Sitz Dash 10277  
Sitz Everelda Entense 2665

Connealy Onward#  
Sitz Henrietta Pride 81M  
O C C Emblazon 854E#  
Sitz Everelda Entense 4948

Indiv. Performance	
Birth Wt	96
205 Wt	686
365 Wt	1171
IMF	3.04/89
REA	14.2/98
Rib Fat	0.31/97

B C C Bushwacker 41-93#  
Ox Bow Manor 4122  
Sitz Manor 3609

Paramont Ambush 2172#  
R C Anita T Bando 918903  
Papa Rito Power 7868  
Sitz Manor 3134#

CED	BW	WW	Milk	YW	\$W	\$B	Dam Production
+5	+2.3	+46	+25	+75	34.37	59.57	8 WR 102

- Recommended for cows
- Dam from our top cow family
- A tick bigger framed with the length and muscle to make pounds



## Ox Bow Dash 3296

Tag 6142

Calved 2/4/13

Reg. 17663883

Sitz Upward 307R#  
Sitz Dash 10277  
Sitz Everelda Entense 2665

Connealy Onward#  
Sitz Henrietta Pride 81M  
O C C Emblazon 854E#  
Sitz Everelda Entense 4948

Indiv. Performance	
Birth Wt	86
205 Wt	691
365 Wt	1166
IMF	3.12/91
REA	15.0/103
Rib Fat	0.35/109

CAR Tracker 321  
Ox Bow Blackcap 6142  
Ox Bow Blackcap 360

Car Tracker 904#  
C A R Real Lady 6108#  
N Bar Emulation EXT#  
Toebben Blackcap 068E

CED	BW	WW	Milk	YW	\$W	\$B	Dam Production
+9	+1.1	+47	+22	+77	34.09	60.75	6 WR 92

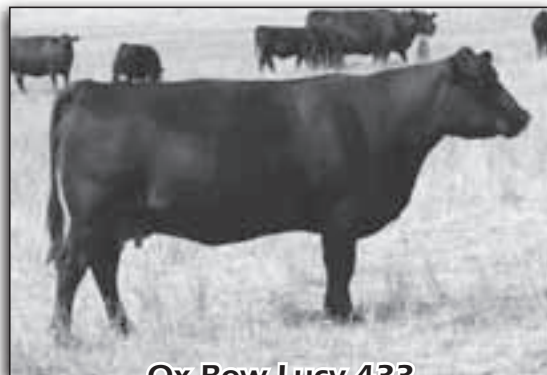
- Recommended for heifers or cows
- Low birth weight dam has 6 births @ 96
- Really smooth with a long side and hip



**Ox-Bow-Manor-4122**  
Dam of Lot 71



**Lot 72**



**Ox-Bow-Lucy-433**  
Dam of Lot 72

**72**

**Ox Bow Dash 3358**

<b>Bull</b>	Tag 433	Calved 2/14/13	Reg. 17682229				
Sitz Upward 307R#	Connealy Onward#	Indiv. Performance					
<b>Sitz Dash 10277</b>	Sitz Henrietta Pride 81M	Birth Wt	<b>103</b>				
Sitz Everelda Entense 2665	O C C Emblazon 854E#	205 Wt	<b>760</b>				
	Sitz Everelda Entense 4948	365 Wt	<b>1328</b>				
G A R Expectation 4915#	N Bar Emulation EXT#	IMF	<b>3.30/96</b>				
<b>Ox Bow Lucy 433</b>	G A R Traveler 2421	REA	<b>14.5/100</b>				
Ox Bow Lucy 187	Sitz Traveler 9929#	Rib Fat	<b>0.35/109</b>				
	North Fork Lucy 6070	Dam Production					
CED	BW	WW	Milk	YW	\$W	\$B	
<b>+5</b>	<b>+3.3</b>	<b>+53</b>	<b>+25</b>	<b>+85</b>	<b>35.48</b>	<b>87.57</b>	<b>7 WR 104</b>

- Recommended for cows
- Natural calf from a high performance donor dam by Expectation
- Near ideal phenotype dam with great fleshing ability and udder quality
- Stand out all year, exceptional profile, deep and well muscled beef bull



2013 Montana Angus Tour

**reference sire**

**Ox Bow Revival 1313**

	Calved 1/26/11	Reg. 17054381					
Sitz Upward 307R#	Connealy Onward#						
<b>Sitz Dash 10277</b>	Sitz Henrietta Pride 81M						
Sitz Everelda Entense 2665	O C C Emblazon 854E#						
	Sitz Everelda Entense 4948						
K C F Bennett Total#	Sitz Alliance 6595#						
<b>Ox Bow Manor 933</b>	Ext of Conanga 6790						
Ox Bow Manor 7105#	K C F Bennett Index						
	Ox Bow Manor 335						
BW	WW	Milk	YW	Scrotal	Marb	RE	Fat
<b>-0.5</b>	<b>+50</b>	<b>+27</b>	<b>+86</b>	<b>+0.79</b>	<b>+0.26</b>	<b>+0.45</b>	<b>+0.017</b>
CED	SEN	\$W	\$F	\$G	\$B		
<b>+9</b>	<b>7.58</b>	<b>54.45</b>	<b>29.81</b>	<b>22.69</b>	<b>64.52</b>		



**6**  
**Sons Sell**

Top selling bull of our 2012 sale selling to Strommen Ranch, North Dakota and Genex. Very attractive profiling sire, he has it all, moderation, length, depth, and thickness. Moderate and easy fleshing perfect uddered dam from our top cow family. First calves came easy and really grew. Exceptional \$W value reflects his balance and efficiency.

**73**

**Ox Bow Revival 3209**

<b>Bull</b>	Tag 1	Calved 1/24/13	Reg. 17663833				
Sitz Dash 10277	Sitz Upward 307R#	Indiv. Performance					
<b>Ox Bow Revival 1313</b>	Sitz Everelda Entense 2665	Birth Wt	<b>78</b>				
Ox Bow Manor 933	K C F Bennett Total#	205 Wt	<b>694</b>				
	Ox Bow Manor 7105#	365 Wt	<b>1304</b>				
S A V Final Answer 0035#	Sitz Traveler 8180#	IMF	<b>3.45/101</b>				
<b>Ox Bow Blackette Lady 1</b>	S A V Emulous 8145	REA	<b>12.3/87</b>				
Ox Bow Blackette Lady 793	Redland Emblazon 3234	Rib Fat	<b>0.24/83</b>				
	Ox Bow Blackette Lady 278	Dam Production					
CED	BW	WW	Milk	YW	\$W	\$B	
<b>+9</b>	<b>-0.6</b>	<b>+52</b>	<b>+26</b>	<b>+85</b>	<b>39.32</b>	<b>58.41</b>	<b>1 WR 108</b>

- Recommended for heifers or cows
- Moderate and attractive patterned with long deep side and solid top and quarter

**74**

**Ox Bow Revival 3215**

<b>Bull</b>	Tag 14	Calved 1/24/13	Reg. 17663836				
Sitz Dash 10277	Sitz Upward 307R#	Indiv. Performance					
<b>Ox Bow Revival 1313</b>	Sitz Everelda Entense 2665	Birth Wt	<b>68</b>				
Ox Bow Manor 933	K C F Bennett Total#	205 Wt	<b>688</b>				
	Ox Bow Manor 7105#	365 Wt	<b>1245</b>				
Sitz JLS Forward 568S	Connealy Onward#	IMF	<b>3.63/106</b>				
<b>Ox Bow Lady Ida 14</b>	Pine Coulee Blackcap G 3253	REA	<b>14.1/99</b>				
Ox Bow Lady Ida 987	S A V 004 Density 4336#	Rib Fat	<b>0.36/124</b>				
	Ox Bow Lady Ida 558#	Dam Production					
CED	BW	WW	Milk	YW	\$W	\$B	
<b>+13</b>	<b>-1.8</b>	<b>+55</b>	<b>+25</b>	<b>+89</b>	<b>41.72</b>	<b>69.37</b>	<b>1 WR 107</b>

- Recommended for heifers or cows
- Nice balance of smoothness, middle and muscle



**Ox-Bow-Manor-933**  
Dam of Ox Bow Revival 1313



**Ox-Bow-Manor-7105**  
Grand Dam of Ox Bow Revival 1313

**75**  
**Bull** Tag 1137 Calved 1/24/13 Reg. 17663841

Sitz Dash 10277  
**Ox Bow Revival 1313**  
Ox Bow Manor 933

S A V Final Answer 0035#  
**Ox Bow Eola 1137**  
Ox Bow Eola 940

Sitz Upward 307R#  
Sitz Everelda Entense 2665  
K C F Bennett Total#  
Ox Bow Manor 7105#

Sitz Traveler 8180#  
S A V Emulous 8145  
21AR Coal Bank C014#  
Ox Bow Eola 772

Indiv. Performance	
Birth Wt	<b>78</b>
205 Wt	<b>727</b>
365 Wt	<b>1269</b>
IMF	<b>2.65/78</b>
REA	<b>16.0/113</b>
Rib Fat	<b>0.26/90</b>

CED	BW	WW	Milk	YW	\$W	\$B	Dam Production
<b>+9</b>	<b>-0.2</b>	<b>+58</b>	<b>+28</b>	<b>+97</b>	<b>40.44</b>	<b>62.03</b>	<b>1 WR 113</b>

- Recommended for heifers or cows
- Long bodied bull with a big barrel and a lot of visual muscle expression



**Ox-Bow-Forever-Lady-124**  
Grand Dam of Lot 78

**76**  
**Bull** Tag 122 Calved 1/24/13 Reg. 17663851

Sitz Dash 10277  
**Ox Bow Revival 1313**  
Ox Bow Manor 933

Sinclair Extravagant 6X7  
**Ox Bow Barbaramere Jet 122**  
Ox Bow Barbaramere Jet 716

N Bar Emulation EXT#  
Sinclair Lady 2P30 8146  
Woodhill Foresight#  
Ox Bow Barbaramere Jet 125

Sitz Upward 307R#  
Sitz Everelda Entense 2665  
K C F Bennett Total#  
Ox Bow Manor 7105#

Indiv. Performance

Birth Wt	<b>63</b>
205 Wt	<b>743</b>
365 Wt	<b>1298</b>
IMF	<b>2.23/65</b>
REA	<b>15.2/107</b>
Rib Fat	<b>0.26/90</b>

CED	BW	WW	Milk	YW	\$W	\$B	Dam Production
<b>+13</b>	<b>-1.8</b>	<b>+57</b>	<b>+27</b>	<b>+92</b>	<b>43.10</b>	<b>69.00</b>	<b>1 WR 115</b>

- Recommended for heifers or cows
- Moderate and easy fleshing Emulation bred dam with a super udder, Donor third dam by Hero 2418
- Moderate and big bodied, strong topped and easy fleshing

**78**  
**Bull** Tag 050 Calved 2/7/13 Reg. 17663892

Sitz Dash 10277  
**Ox Bow Revival 1313**  
Ox Bow Manor 933

O C C Emblazon 854E#  
**Ox Bow Forever Lady 050**  
Ox Bow Forever Lady 124

Sitz Upward 307R#  
Sitz Everelda Entense 2665  
K C F Bennett Total#  
Ox Bow Manor 7105#

D H D Traveler 6807#  
Dixie Erica of CH 1019  
G A R Example 3204#  
Ox Bow Forever Lady 933

Indiv. Performance

Birth Wt	<b>86</b>
205 Wt	<b>657</b>
365 Wt	<b>1238</b>
IMF	<b>3.31/97</b>
REA	<b>15.6/110</b>
Rib Fat	<b>0.29/100</b>

CED	BW	WW	Milk	YW	\$W	\$B	Dam Production
<b>+7</b>	<b>+1.1</b>	<b>+47</b>	<b>+22</b>	<b>+80</b>	<b>32.84</b>	<b>60.94</b>	<b>2 WR 104</b>

- Recommended for larger heifers or cows
- Longevity and rough range function cow family, grand dam is going strong at age 13
- Heavy muscled through the top and quarter, extremely wide tracking with tremendous chest floor width

**77**  
**Bull** Tag 1124 Calved 1/27/13 Reg. 17663840

Sitz Dash 10277  
**Ox Bow Revival 1313**  
Ox Bow Manor 933

O C C Missing Link 830M  
**Ox Bow Manor 1124**  
Ox Bow Manor 965

Sitz Upward 307R#  
Sitz Everelda Entense 2665  
K C F Bennett Total#  
Ox Bow Manor 7105#

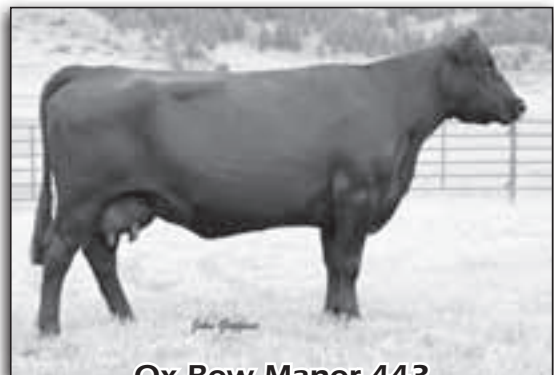
O C C Headliner 661H  
O C C Dixie Erica 946K  
Woodhill Foresight#  
Ox Bow Manor 443#

Indiv. Performance

Birth Wt	<b>90</b>
205 Wt	<b>708</b>
365 Wt	<b>1330</b>
IMF	<b>3.29/96</b>
REA	<b>14.0/99</b>
Rib Fat	<b>0.33/114</b>

CED	BW	WW	Milk	YW	\$W	\$B	Dam Production
<b>+5</b>	<b>+1.0</b>	<b>+53</b>	<b>+26</b>	<b>+87</b>	<b>37.58</b>	<b>68.37</b>	<b>1 WR 110</b>

- Recommended for cows
- Top cow family, Pathfinder third dam by EXT
- He will make moderate, easy fleshing and efficient range cattle
- Attractive pattern, very complete with good rib dimension and extra top and quarter muscle



**Ox-Bow-Manor-443**  
Foundation Cow Behind Lot 77



## MC Cumber 4X13 Extra 7159

Calved 2/19/07

Reg. +15813200

N Bar Emulation EXT#  
**Sinclair Extra 4X13#**  
 N Bar Lady Ida S C C 2P37

Emulation N Bar 5522#  
 N Bar Primrose 2424  
 N Bar Prime Time D806#  
 N Bar Lady Ida F1080

Leachman Right Time#  
**Miss Wix 2022 HC Mc Cumber#**  
 Miss Wix 7111 of Mc Cumber

N Bar Emulation EXT#  
 Leachman Erica 0025  
 G D A R Traveler 71#  
 Miss Wix 365 of Mc Cumber#

BW	WW	Milk	YW	Scrotal	Marb	RE	Fat
-0.3	+48	+21	+79	-0.48	+0.44	-0.05	+0.032
CED	SEN	SW	SF	SG	SB		
+6	1.98	36.67	22.00	17.66	76.86		



**8**  
**Sons Sell**

Consistent calving ease sire. Adds the Emulation influence, traces numerous times to Emulation 31. Pathfinder dam is one of the top Right Time daughters in the breed. Moderate framed, smooth shouldered and clean made sire with very desirable muscle pattern. Maternally strong, moderate, nice fronted females with a good square hip and excellent udders.



## Ox Bow Extra 3221

Tag 151

Calved 1/26/13

Reg. 17663838

Sinclair Extra 4X13#  
**MC Cumber 4X13 Extra 7159**  
 Miss Wix 2022 HC Mc Cumber#

N Bar Emulation EXT#  
 N Bar Lady Ida S C C 2P37  
 Leachman Right Time#  
 Miss Wix 7111 of Mc Cumber

Indiv. Performance	
Birth Wt	<b>80</b>
205 Wt	<b>757</b>
365 Wt	<b>1312</b>
IMF	<b>3.24/95</b>
REA	<b>14.2/100</b>
Rib Fat	<b>0.28/97</b>

S A V Final Answer 0035#  
**Ox Bow Barbaramere 151**  
 Ox Bow Barbaramere 8151

Sitz Traveler 8180#  
 S A V Emulous 8145  
 Redland Emblazon 3234  
 Ox Bow Barbaramere 635

CED	BW	WW	Milk	YW	SW	SB	Dam Production
+7	+0.2	+59	+25	+90	43.10	70.66	1 WR 117

- Recommended for heifers or cows
- Proven pedigree of easy fleshing range durable females, third dam by Bushwacker
- Eye catching profile with lots of vital organ capacity, and unmatched top and quarter width



**Lot 80**



## Ox Bow Extra 3359

Tag 607

Calved 1/29/13

Reg. 17682230

Sinclair Extra 4X13#  
**MC Cumber 4X13 Extra 7159**  
 Miss Wix 2022 HC Mc Cumber#

N Bar Emulation EXT#  
 N Bar Lady Ida S C C 2P37  
 Leachman Right Time#  
 Miss Wix 7111 of Mc Cumber

Indiv. Performance	
Birth Wt	<b>90</b>
205 Wt	<b>697</b>
365 Wt	<b>1243</b>
IMF	<b>5.01/146</b>
REA	<b>14.3/99</b>
Rib Fat	<b>0.33/103</b>

B C C Bushwacker 41-93#  
**Ox Bow Forever Lady 607**  
 Ox Bow Forever Lady 350

Paramont Ambush 2172#  
 R C Anita T Bando 918903  
 Leachman Oxbow  
 Gdar Forever Lady 6180

CED	BW	WW	Milk	YW	SW	SB	Dam Production
+3	+1.4	+47	+23	+75	35.71	78.02	5 WR 103

- Recommended for cows
- A favorite with tremendous presence and power
- Moderate with good rib depth and dimension, unmatched top and quarter width



## Ox Bow Extra 3352

Tag 8167

Calved 2/5/13

Reg. 17663919

Sinclair Extra 4X13#  
**MC Cumber 4X13 Extra 7159**  
 Miss Wix 2022 HC Mc Cumber#

N Bar Emulation EXT#  
 N Bar Lady Ida S C C 2P37  
 Leachman Right Time#  
 Miss Wix 7111 of Mc Cumber

Indiv. Performance	
Birth Wt	<b>81</b>
205 Wt	<b>686</b>
365 Wt	<b>1286</b>
IMF	<b>3.59/105</b>
REA	<b>12.5/88</b>
Rib Fat	<b>0.25/86</b>

21AR Coal Bank C014#  
**Ox Bow Polly 8167#**  
 Ox Bow Polly 645#

Basin Max 602C#  
 Leachman Lass 5014#  
 Woodhill Foresight#  
 Ox Bow Polly 210

CED	BW	WW	Milk	YW	SW	SB	Dam Production
+8	-0.3	+52	+26	+90	36.84	73.03	4 WR 108

- Recommended for heifers or cows
- 2nd generation Pathfinder dam, grand dam was a top seller in our 2013 female sale
- Bigger framed and well balanced length, middle, and muscle



## Ox Bow Extra 3234

Tag 141

Calved 1/26/13

Reg. 17663848

Sinclair Extra 4X13#  
**MC Cumber 4X13 Extra 7159**  
 Miss Wix 2022 HC Mc Cumber#

N Bar Emulation EXT#  
 N Bar Lady Ida S C C 2P37  
 Leachman Right Time#  
 Miss Wix 7111 of Mc Cumber

Indiv. Performance	
Birth Wt	<b>63</b>
205 Wt	<b>760</b>
365 Wt	<b>1309</b>
IMF	<b>3.26/96</b>
REA	<b>15.2/107</b>
Rib Fat	<b>0.28/97</b>

Sitz Dash 10277  
**Ox Bow Blackbird 141**  
 Ox Bow Blackbird 691

Sitz Upward 307R#  
 Sitz Everelda Entense 2665  
 O C C Emblazon 854E#  
 Ox Bow Blackbird 888

CED	BW	WW	Milk	YW	SW	SB	Dam Production
+13	-2.6	+56	+25	+88	44.02	75.62	1 WR 118

- Recommended for heifers or cows
- Strong Emulation bred calving ease sensation, donor third dam by EXT 473 has 10 weaned at 108
- Moderation, fleshing ability and udder quality bred in
- Deep and wide tracking with one of the heaviest muscle patterns in the sale



**Ox-Bow-Blackbird-691**  
 Grand Dam of Lot 80





## 85 Ox Bow Extra 3247

**Bull** Tag 0115 Calved 2/28/13 Reg. 17663857

Sinclair Extra 4X13#	N Bar Emulation EXT#	Indiv. Performance
<b>MC Cumber 4X13 Extra 7159</b>	N Bar Lady Ida S C C 2P37	Birth Wt <b>97</b>
Miss Wix 2022 HC Mc Cumber#	Leachman Right Time#	205 Wt <b>670</b>
	Miss Wix 7111 of Mc Cumber	365 Wt <b>1291</b>
	Sitz Rainmaker 6169#	IMF <b>3.51/103</b>
<b>Ox Bow Beauty 0115</b>	Sitz Miss Burgess 1591#	REA <b>15.0/106</b>
Ox Bow Beauty 7164	Ox Bow Example 4215	Rib Fat <b>0.26/90</b>
	Ox Bow Beauty 321	

CED	BW	WW	Milk	YW	\$W	\$B	Dam Production
<b>0</b>	<b>+3.5</b>	<b>+49</b>	<b>+23</b>	<b>+82</b>	<b>28.62</b>	<b>76.98</b>	<b>2 WR 108</b>

- Recommended for cows
- Strong maternal cow family developed from Fishhook- VDAR genetics
- Pedigree traces to Traveler124 GDAR daughters of VDAR Pine Drive Lucy 7 and VDAR Beauty 930
- A tick bigger framed, very well balanced with nice rib design and wide top and quarter dimension

## 86 Ox Bow Extra 3314

**Bull** Tag 7116 Calved 3/8/13 Reg. 17663896

Sinclair Extra 4X13#	N Bar Emulation EXT#	Indiv. Performance
<b>MC Cumber 4X13 Extra 7159</b>	N Bar Lady Ida S C C 2P37	Birth Wt <b>79</b>
Miss Wix 2022 HC Mc Cumber#	Leachman Right Time#	205 Wt <b>717</b>
	Miss Wix 7111 of Mc Cumber	365 Wt <b>1279</b>
	Woodhill Foresight#	IMF <b>3.00/88</b>
<b>Ox Bow Queen Mother 7116#</b>	Papa Forte 1921#	REA <b>17.4/120</b>
Ox Bow Queen Mother 408#	Bon View Gammer 85	Rib Fat <b>0.34/106</b>
	Ox Bow New Design 2214	
	Lukens Queen Mother 9044	

CED	BW	WW	Milk	YW	\$W	\$B	Dam Production
<b>I+3</b>	<b>I+1.9</b>	<b>I+51</b>	<b>I+25</b>	<b>I+86</b>	<b>33.93</b>	<b>80.59</b>	<b>4 WR 105</b>

- Recommended for cows
- Twin, 2nd generation Pathfinder dam, foundation Queen Mother female's pedigree includes sires: Alliance, Traveler 6807 & Rito 2100
- Very correct with a good straight top, square hip and ample rib

## 87 Ox Bow Emulation 3299

**Bull** Tag 635 Calved 2/12/13 Reg. 17692313

N Bar Emulation EXT#	Emulation N Bar 5522#	Indiv. Performance
<b>Sinclair Emulation XXP</b>	N Bar Primrose 2424	Birth Wt <b>95</b>
N Bar Primrose Y3051#	N Bar Emulation EXT#	205 Wt <b>756</b>
	N Bar Primrose 2429#	365 Wt <b>1257</b>
	B C C Bushwacker 41-93#	IMF <b>2.17/63</b>
<b>Ox Bow Barbaramere 635</b>	Paramont Ambush 2172#	REA <b>15.3/106</b>
Ox Bow Barbaramere 391	R C Anita T Bando 918903	Rib Fat <b>0.43/134</b>
	Leachman Oxbow	
	Sitz Barbaramere 1026#	

CED	BW	WW	Milk	YW	\$W	\$B	Dam Production
<b>+3</b>	<b>+2.1</b>	<b>+60</b>	<b>+20</b>	<b>+92</b>	<b>40.28</b>	<b>59.71</b>	<b>4 WR 105</b>

- Recommended for cows
- Pathfinder 3rd dam by Traveler 044 is our foundation Barbaramere purchased as a heifer from Sitz, dam is highest volume Bushwacker we've had
- Very long performance sire with good capacity

## 88 Ox Bow Example 3284

**Bull** Tag 025 Calved 2/2/13 Reg. 17663876

G A R Example 3204#	N Bar Emulation EXT#	Indiv. Performance
<b>Ox Bow Example 4215</b>	G A R Bando 10	Birth Wt <b>77</b>
Ox Bow Lucy 965	Rito 2100 G D A R#	205 Wt <b>657</b>
	FSHK Lucy 472	365 Wt <b>1148</b>
	Sitz Dash 10277	IMF <b>2.66/78</b>
<b>Ox Bow Emma E 025</b>	Sitz Upward 307R#	REA <b>13.5/95</b>
Ox Bow Emma E 834	Sitz Everelda Entense 2665	Rib Fat <b>0.23/79</b>
	S A V Final Answer 0035#	
	Ox Bow Emma E 362#	

CED	BW	WW	Milk	YW	\$W	\$B	Dam Production
<b>+12</b>	<b>-0.4</b>	<b>+50</b>	<b>+23</b>	<b>+81</b>	<b>37.71</b>	<b>52.48</b>	<b>2 WR 96</b>

- Recommended for heifers or cows
- Reliable calving ease, our shortest gestation, lowest birth weight cow family
- Clean fronted, strong topped and square made

## 83 Ox Bow Extra 3277

**Bull** Tag 962 Calved 2/6/13 Reg. 17663870

Sinclair Extra 4X13#	N Bar Emulation EXT#	Indiv. Performance
<b>MC Cumber 4X13 Extra 7159</b>	N Bar Lady Ida S C C 2P37	Birth Wt <b>94</b>
Miss Wix 2022 HC Mc Cumber#	Leachman Right Time#	205 Wt <b>690</b>
	Miss Wix 7111 of Mc Cumber	365 Wt <b>1250</b>
	Redland Emblazon 3234	IMF <b>3.20/94</b>
<b>Ox Bow Beebe Queen 962</b>	O C C Emblazon 854E#	REA <b>14.7/104</b>
Ox Bow Beebe Queen 3100	Redland Edella 2079	Rib Fat <b>0.28/97</b>
	Leachman Oxbow	
	Sitz Beebe Queen 2763#	

CED	BW	WW	Milk	YW	\$W	\$B	Dam Production
<b>+2</b>	<b>+2.0</b>	<b>+52</b>	<b>+22</b>	<b>+77</b>	<b>37.44</b>	<b>66.78</b>	<b>3 WR 102</b>

- Recommended for cows
- High performance cow family, grand dam has 6 weaned @103, Pathfinder g.g. dam 9 weaned @ 108
- A tick bigger framed, stylish look to this long, good muscled, free traveling bull



## 84 Ox Bow Extra 3373

**Bull** Tag 745 Calved 2/11/13 Reg. 17663927

Sinclair Extra 4X13#	N Bar Emulation EXT#	Indiv. Performance
<b>MC Cumber 4X13 Extra 7159</b>	N Bar Lady Ida S C C 2P37	Birth Wt <b>95</b>
Miss Wix 2022 HC Mc Cumber#	Leachman Right Time#	205 Wt <b>741</b>
	Miss Wix 7111 of Mc Cumber	365 Wt <b>1315</b>
	Sitz Tradition RLS 8702#	IMF <b>2.97/87</b>
<b>Ox Bow Manor 745</b>	Vermilion Dateline 7078#	REA <b>15.0/103</b>
Ox Bow Manor 158	R L S Eisa Evergreen 5018	Rib Fat <b>0.30/94</b>
	G A R Commitment#	
	Sitz Manor 3609	

CED	BW	WW	Milk	YW	\$W	\$B	Dam Production
<b>+4</b>	<b>+1.6</b>	<b>+51</b>	<b>+20</b>	<b>+84</b>	<b>33.69</b>	<b>79.36</b>	<b>4 WR 100</b>

- Recommended for cows
- Very feminine and attractive dam that is easy fleshing and super uddered
- Standout all summer with his mass and dimension, he'll make heavy, attractive muscled feeder cattle and durable daughters



## Redland Emblazon 3234

Calved 6/30/04

Reg. 14969993

D H D Traveler 6807#  
**O C C Emblazon 854E#**  
Dixie Erica of C H 1019

O A S Traveler 23-4#  
Bemindful Maid D H D 0807#  
PBC 707 1M F0203#  
Dixie Erica of C H 615

G D A R Oscar 734#  
**Redland Edella 2079**  
Younkin Edella 7291#

Baldrige Oscar#  
L T Forever Lady 395 G D A R#  
Rito 054 G D A R#  
Younkin Edella 7294

BW	WW	Milk	YW	Scrotal	Marb	RE	Fat
+3.4	+51	+21	+69	+0.20	+0.31	+0.50	+0.014
CED	SEN	SW	SF	SG	SB		
+2	7.10	37.66	8.59	29.26	40.94		



9  
Sons Sell

High selling bull in Redland's Fall 2005 sale. We really like the moderation, efficiency, depth of body, and muscle he adds to cattle. Daughters are easy fleshing with quality udders and a super attractive rib design. Very good SEN and SW. A very complete package with well balanced Marbling and Ribeye.



Lot 89

# 89

## Ox Bow Emblazon 3319

Tag 949

Calved 1/29/13

Reg. 17663901

O C C Emblazon 854E#  
**Redland Emblazon 3234**  
Redland Edella 2079

D H D Traveler 6807#  
Dixie Erica of C H 1019  
G D A R Oscar 734#  
Younkin Edella 7291#

Indiv. Performance	
Birth Wt	94
205 Wt	711
365 Wt	1250
IMF	4.02/118
REA	13.4/94
Rib Fat	0.25/86

S A V Final Answer 0035#  
**Ox Bow Hyalite 949**  
Ox Bow Hyalite 752

Sitz Traveler 8180#  
S A V Emulous 8145  
Morgans Direction 111 9901#  
Ox Bow Hyalite 4117

CED	BW	WW	Milk	YW	SW	SB	Dam Production
+2	+2.4	+55	+23	+82	37.75	60.40	3 WR 100

- Recommended for cows
- Feminine fronted and attractive dam with great fleshing ability and udder quality
- One of the top Emblazons, he is deep bodied and extra thick

# 90

## Ox Bow Emblazon 3298

Tag 9105

Calved 1/31/13

Reg. 17663885

O C C Emblazon 854E#  
**Redland Emblazon 3234**  
Redland Edella 2079

D H D Traveler 6807#  
Dixie Erica of C H 1019  
G D A R Oscar 734#  
Younkin Edella 7291#

Indiv. Performance	
Birth Wt	91
205 Wt	646
365 Wt	1153
IMF	2.45/72
REA	12.6/89
Rib Fat	0.17/59

S A V Final Answer 0035#  
**Ox Bow Barbaramere Jet 9105**  
Ox Bow Barbaramere Jet 695#

Sitz Traveler 8180#  
S A V Emulous 8145  
Ox Bow Bushwacker 4243  
Ox Bow Barbaramere Jet 494

CED	BW	WW	Milk	YW	SW	SB	Dam Production
+5	+2.2	+53	+23	+79	37.48	37.71	3 WR 103

- Recommended for cows
- Moderate, very easy fleshing cow family with a lot of fertility
- Moderate framed, deep barreled bull with thickness

# 91

## Ox Bow Emblazon 3325

Tag 832

Calved 2/5/13

Reg. 17663904

O C C Emblazon 854E#  
**Redland Emblazon 3234**  
Redland Edella 2079

D H D Traveler 6807#  
Dixie Erica of C H 1019  
G D A R Oscar 734#  
Younkin Edella 7291#

Indiv. Performance	
Birth Wt	80
205 Wt	669
365 Wt	1223
IMF	3.41/100
REA	12.7/89
Rib Fat	0.32/110

S A V Adaptor 2213  
**Ox Bow Blackcap Lady 832**  
Ox Bow Blackcap Lady 459

B C C Bushwacker 41-93#  
S A V Abigale 0451  
Leachman Oxbow  
Ox Bow Blackcap Lady 273

CED	BW	WW	Milk	YW	SW	SB	Dam Production
+8	+1.1	+51	+24	+77	41.24	58.00	3 WR 109

- Recommended for heifers or cows
- Low birth- high production dam has 3 births @ 97
- Dam is grand dam to last year's high selling bull to Spring Cove Ranch in Idaho
- Very attractive profile, with added rib dimension and muscle



Ox-Bow-Beauty-142  
Grand Dam of Lots 92 and 93

# 92

## Ox Bow Emblazon 3301

Tag 032

Calved 2/11/13

Reg. 17663887

O C C Emblazon 854E#  
**Redland Emblazon 3234**  
Redland Edella 2079

D H D Traveler 6807#  
Dixie Erica of C H 1019  
G D A R Oscar 734#  
Younkin Edella 7291#

Indiv. Performance	
Birth Wt	95
205 Wt	688
365 Wt	1293
IMF	3.49/102
REA	12.8/90
Rib Fat	0.27/93

S A V Final Answer 0035#  
**Ox Bow Beauty 032**  
Ox Bow Beauty 142

Sitz Traveler 8180#  
S A V Emulous 8145  
Rito 616 of 4B20 6807#  
Er Beauty G044

CED	BW	WW	Milk	YW	SW	SB	Dam Production
+3	+2.1	+53	+23	+80	37.32	60.57	2 WR 109

- Recommended for cows
- Dam is one of our most ideal Final Answer daughters, grand dam is catalog cover picture cow
- Full brother in blood to Lot 93
- A complete package, phenotype, performance, and maternal for unmatched dry range function



**93 Ox Bow Emblazon 3349**  
 Bull Tag 047 Calved 2/17/13 Reg. 17663917

O C C Emblazon 854E# <b>Redland Emblazon 3234</b> Redland Edella 2079	D H D Traveler 6807# Dixie Erica of C H 1019 G D A R Oscar 734# YounkIn Edella 7291#	Indiv. Performance Birth Wt <b>83</b> 205 Wt <b>717</b> 365 Wt <b>1295</b> IMF <b>2.83/83</b> REA <b>16.1/113</b> Rib Fat <b>0.40/138</b>
-----------------------------------------------------------------------------	-----------------------------------------------------------------------------------------------	-------------------------------------------------------------------------------------------------------------------------------------------------------------

S A V Final Answer 0035#  
**Ox Bow Beauty 047**  
 Ox Bow Beauty 142

Sitz Traveler 8180# S A V Emulous 8145 Rito 616 of 4B20 6807# Er Beauty G044	Dam Production <b>2 WR 103</b>
---------------------------------------------------------------------------------------	-----------------------------------

CED	BW	WW	Milk	YW	\$W	\$B	Dam Production
<b>+7</b>	<b>+0.5</b>	<b>+56</b>	<b>+22</b>	<b>+83</b>	<b>41.60</b>	<b>59.76</b>	<b>2 WR 103</b>

- Recommended for larger heifers or cows
- Cow family with reliable range function and top udder quality, foundation 3rd dam by EXT
- Full brother in blood to Lot 92
- Very correct structure with the moderation, muscle and middle to make efficient converters of grass

**96 Ox Bow Emblazon 3258**  
 Bull Tag 8158 Calved 2/27/13 Reg. 17663861

O C C Emblazon 854E# <b>Redland Emblazon 3234</b> Redland Edella 2079	D H D Traveler 6807# Dixie Erica of C H 1019 G D A R Oscar 734# YounkIn Edella 7291#	Indiv. Performance Birth Wt <b>79</b> 205 Wt <b>607</b> 365 Wt <b>1178</b> IMF <b>2.64/77</b> REA <b>15.2/107</b> Rib Fat <b>0.28/97</b>
-----------------------------------------------------------------------------	-----------------------------------------------------------------------------------------------	------------------------------------------------------------------------------------------------------------------------------------------------------------

Leachman Right Time#  
**Ox Bow Blackbird 8158**  
 Ox Bow Blackbird 638

N Bar Emulation EXT# Leachman Erica 0025 V D A R New Trend 779 Ox Bow Blackbird 308	Dam Production <b>4 WR 92</b>
----------------------------------------------------------------------------------------------	----------------------------------

CED	BW	WW	Milk	YW	\$W	\$B	Dam Production
<b>+7</b>	<b>+0.4</b>	<b>+45</b>	<b>+17</b>	<b>+66</b>	<b>35.28</b>	<b>53.34</b>	<b>4 WR 92</b>

- Recommended for heifers or cows
- Perfect uddered Right Time dam
- Attractive pattern with the rib and dimension to make easy fleshing females

**94 Ox Bow Emblazon 3361**  
 Bull Tag 695 Calved 2/19/13 Reg. 17662231

O C C Emblazon 854E# <b>Redland Emblazon 3234</b> Redland Edella 2079	D H D Traveler 6807# Dixie Erica of C H 1019 G D A R Oscar 734# YounkIn Edella 7291#	Indiv. Performance Birth Wt <b>91</b> 205 Wt <b>709</b> 365 Wt <b>1211</b> IMF <b>4.63/135</b> REA <b>11.8/81</b> Rib Fat <b>0.38/119</b>
-----------------------------------------------------------------------------	-----------------------------------------------------------------------------------------------	-------------------------------------------------------------------------------------------------------------------------------------------------------------

Ox Bow Bushwacker 4243  
**Ox Bow Barbaramere Jet 695#**  
 Ox Bow Barbaramere Jet 494

B C C Bushwacker 41-93# Ox Bow Eisa Evergreen 869 Woodhill Foresight# Ox Bow Barbaramere Jet 229#	Dam Production <b>6 WR 106</b>
------------------------------------------------------------------------------------------------------------	-----------------------------------

CED	BW	WW	Milk	YW	\$W	\$B	Dam Production
<b>+4</b>	<b>+2.1</b>	<b>+50</b>	<b>+24</b>	<b>+73</b>	<b>38.99</b>	<b>56.08</b>	<b>6 WR 106</b>

- Recommended for cows
- High fertility, high performance, cow family with several Pathfinders in the pedigree
- A tick bigger framed and very clean in his make up with solid muscle

**97 Ox Bow Emblazon 3267**  
 Bull Tag 891 Calved 3/10/13 Reg. 17663865

O C C Emblazon 854E# <b>Redland Emblazon 3234</b> Redland Edella 2079	D H D Traveler 6807# Dixie Erica of C H 1019 G D A R Oscar 734# YounkIn Edella 7291#	Indiv. Performance Birth Wt <b>93</b> 205 Wt <b>656</b> 365 Wt <b>1125</b> IMF <b>2.29/67</b> REA <b>14.3/101</b> Rib Fat <b>0.26/90</b>
-----------------------------------------------------------------------------	-----------------------------------------------------------------------------------------------	------------------------------------------------------------------------------------------------------------------------------------------------------------

Bon View Emulation Ext 473#  
**Ox Bow Pride 891**  
 Ox Bow Pride 446

N Bar Emulation EXT# Bon View Ruth 808 Vermilion Dateline 7078# Ox Bow Pride 088	Dam Production <b>3 WR 99</b>
-------------------------------------------------------------------------------------------	----------------------------------

CED	BW	WW	Milk	YW	\$W	\$B	Dam Production
<b>+3</b>	<b>+2.9</b>	<b>+49</b>	<b>+21</b>	<b>+75</b>	<b>32.41</b>	<b>47.57</b>	<b>3 WR 99</b>

- Recommended for cows
- Bigger framed, well proportioned, good uddered dam
- Younger bull, will transmit added frame size and performance of VRD

**95 Ox Bow Emblazon 3569**  
 Bull Tag 939 Calved 2/22/13 Reg. 17663925

O C C Emblazon 854E# <b>Redland Emblazon 3234</b> Redland Edella 2079	D H D Traveler 6807# Dixie Erica of C H 1019 G D A R Oscar 734# YounkIn Edella 7291#	Indiv. Performance Birth Wt <b>99</b> 205 Wt <b>634</b> 365 Wt <b>1148</b> IMF <b>3.12/91</b> REA <b>14.4/101</b> Rib Fat <b>0.25/86</b>
-----------------------------------------------------------------------------	-----------------------------------------------------------------------------------------------	------------------------------------------------------------------------------------------------------------------------------------------------------------

S A V Final Answer 0035#  
**Ox Bow Ever Entense 939**  
 Ox Bow Ever Entense 7157

Sitz Traveler 8180# S A V Emulous 8145 HylIne Right Time 338# GTAR MAR Ever Entense 323	Dam Production <b>3 WR 101</b>
--------------------------------------------------------------------------------------------------	-----------------------------------

CED	BW	WW	Milk	YW	\$W	\$B	Dam Production
<b>+3</b>	<b>+3.5</b>	<b>+51</b>	<b>+23</b>	<b>+79</b>	<b>31.95</b>	<b>52.81</b>	<b>3 WR 101</b>

- Recommended for cows
- Dam is a favorite Final Answer daughter with tremendous phenotype and fleshing ability
- Clean fronted with ample rib and muscle



**Ox-Bow-Ever-Entense-7157**  
 Grand Dam of Lot 95



**C C A Emblazon 702**  
Sire of Lots 98 - 101

**101 Ox Bow Emblazon 3377**  
Bull Tag 706 Calved 2/10/13 Reg. 17682234

O C C Emblazon 854E#	D H D Traveler 6807#	Indiv. Performance
<b>C C A Emblazon 702</b>	Dixie Erica of C H 1019	Birth Wt <b>80</b>
Limestone Blackcap R128	Hyline Right Time 338#	205 Wt <b>690</b>
	Three Trees Blackcap 3337	365 Wt <b>1196</b>
S A V 8180 Traveler 004#	Sitz Traveler 8180#	IMF <b>2.30/67</b>
<b>Ox Bow Barbaramere Jet 706</b>	Boyd Forever Lady 8003	REA <b>16.2/112</b>
Ox Bow Barbaramere Jet 463	VDAR ENTERPRISE 2059	Rib Fat <b>0.26/81</b>
	Ox Bow Barbaramere Jet 2145	

CED	BW	WW	Milk	YW	\$W	\$B	Dam Production
<b>+14</b>	<b>-1.6</b>	<b>+53</b>	<b>+21</b>	<b>+92</b>	<b>36.72</b>	<b>67.02</b>	<b>3 WR 102</b>

- Recommended for heifers or cows
- Nice calving ease head and shoulder, well balanced with a good square hip

**98 Ox Bow Emblazon 3239**  
Bull Tag 1179 Calved 1/24/13 Reg. 17663852

O C C Emblazon 854E#	D H D Traveler 6807#	Indiv. Performance
<b>C C A Emblazon 702</b>	Dixie Erica of C H 1019	Birth Wt <b>69</b>
Limestone Blackcap R128	Hyline Right Time 338#	205 Wt <b>668</b>
	Three Trees Blackcap 3337	365 Wt <b>1198</b>
Sitz Dash 10277	Sitz Upward 307R#	IMF <b>4.04/118</b>
<b>Ox Bow Manor 1179</b>	Sitz Everelda Entense 2665	REA <b>13.7/96</b>
Ox Bow Manor 5121	N Bar Emulation EXT#	Rib Fat <b>0.33/114</b>
	Sitz Manor 3609	

CED	BW	WW	Milk	YW	\$W	\$B	Dam Production
<b>+14</b>	<b>-1.9</b>	<b>+53</b>	<b>+23</b>	<b>+91</b>	<b>38.23</b>	<b>66.27</b>	<b>1 WR 104</b>

- Recommended for heifers or cows
- Dam from our top cow family is a maternal sister to Lots 112-113
- Smaller head and smooth shouldered, he would work well on range calved females

**102 Ox Bow Emblazon 3326**  
Bull Tag 921 Calved 2/3/13 Reg. 17690999

O C C Emblazon 854E#	D H D Traveler 6807#	Indiv. Performance
<b>Redland Emblazon 2021</b>	Dixie Erica of C H 1019	Birth Wt <b>82</b>
Redland Blackcap 1289	Paramont Ambush 2172#	205 Wt <b>629</b>
	Redland Blackcap 516	365 Wt <b>1127</b>
S A V Final Answer 0035#	Sitz Traveler 8180#	IMF <b>2.87/84</b>
<b>Ox Bow Lady Blackbird 921</b>	S A V Emulous 8145	REA <b>13.2/91</b>
Ox Bow Lady Blackbird 265	G A R Example 3204#	Rib Fat <b>0.30/94</b>
	Gdar Lady Blackbird 7198	

CED	BW	WW	Milk	YW	\$W	\$B	Dam Production
<b>+8</b>	<b>+0.1</b>	<b>+42</b>	<b>+19</b>	<b>+74</b>	<b>30.11</b>	<b>36.54</b>	<b>3 WR 96</b>

- Recommended for heifers or cows
- Moderation with the boiler capacity and fleshing ability to make solid functioning range cattle
- Deep ribbed with strong top and quarter

**99 Ox Bow Emblazon 3293**  
Bull Tag 0101 Calved 2/4/13 Reg. 17663881

O C C Emblazon 854E#	D H D Traveler 6807#	Indiv. Performance
<b>C C A Emblazon 702</b>	Dixie Erica of C H 1019	Birth Wt <b>76</b>
Limestone Blackcap R128	Hyline Right Time 338#	205 Wt <b>649</b>
	Three Trees Blackcap 3337	365 Wt <b>1148</b>
S A V 004 Density 4336#	S A V 8180 Traveler 004#	IMF <b>2.75/81</b>
<b>Ox Bow Polly 0101</b>	S A V May 7238	REA <b>14.1/99</b>
Ox Bow Polly 4133	N Bar Emulation EXT#	Rib Fat <b>0.23/79</b>
	V D A R Polly 5022	

CED	BW	WW	Milk	YW	\$W	\$B	Dam Production
<b>+13</b>	<b>-1.3</b>	<b>+50</b>	<b>+22</b>	<b>+88</b>	<b>35.40</b>	<b>61.38</b>	<b>2 WR 100</b>

- Recommended for heifers or cows
- Moderate and easy fleshing cow family with top udder quality



**Ox-Bow-Blackbird-6400**  
Grand Dam of Lot 103

**100 Ox Bow Emblazon 3560**  
Bull Tag 8123 Calved 2/8/13 Reg. 17663922

O C C Emblazon 854E#	D H D Traveler 6807#	Indiv. Performance
<b>C C A Emblazon 702</b>	Dixie Erica of C H 1019	Birth Wt <b>74</b>
Limestone Blackcap R128	Hyline Right Time 338#	205 Wt <b>704</b>
	Three Trees Blackcap 3337	365 Wt <b>1061</b>
Woodhill Foresight#	Papa Forte 1921#	IMF <b>3.24/95</b>
<b>Ox Bow Miss Diamond 8123</b>	Bon View Gammer 85	REA <b>13.7/96</b>
Kel MCC Miss Diamond 6618046	Sitz Traveler 8180#	Rib Fat <b>0.23/79</b>
	Kel MCC Miss Diamond 1104 661	

CED	BW	WW	Milk	YW	\$W	\$B	Dam Production
<b>+13</b>	<b>-1.4</b>	<b>+57</b>	<b>+24</b>	<b>+97</b>	<b>39.56</b>	<b>59.34</b>	<b>2 WR 107</b>

- Recommended for heifers or cows
- Dam from a top maternal cow family
- Smooth shouldered and long

**103 Ox Bow Emblazon 3329**  
Bull Tag 9156 Calved 2/20/13 Reg. 17663905

Redland Emblazon 3234	O C C Emblazon 854E#	Indiv. Performance
<b>Ox Bow Emblazon 0370</b>	Redland Edella 2079	Birth Wt <b>74</b>
Ox Bow Manor 327#	N Bar Emulation EXT#	205 Wt <b>624</b>
	Ox Bow Manor 105	365 Wt <b>1078</b>
MC Cumber 4X13 Extra 7159	Sinclair Extra 4X13#	IMF <b>2.76/81</b>
<b>Ox Bow Blackbird 9156</b>	Miss Wix 2022 HC Mc Cumber#	REA <b>13.9/98</b>
Ox Bow Blackbird 6400	O C C Emblazon 854E#	Rib Fat <b>0.20/69</b>
	Ox Bow Blackbird 888	

CED	BW	WW	Milk	YW	\$W	\$B	Dam Production
<b>+13</b>	<b>-3.2</b>	<b>+42</b>	<b>+20</b>	<b>+69</b>	<b>35.76</b>	<b>35.03</b>	<b>3 WR 96</b>

- Recommended for heifers or cows
- Sleep all night heifer bull, dam has 3 births @ 91
- Solid range function, double bred Emblazon-EXT top and bottom of the pedigree



## O C C Missing Link 830M

Calved 9/16/02

Reg. 14456399

O C C Emblazon 854E#  
**O C C Headliner 661H**  
 O C C Juanada 858F#

D H D Traveler 6807#  
 Dixie Erica of C H 1019  
 Basin Rainmaker 654X#  
 O C C Juanada 709V

O C C Glory 950G#  
**O C C Dixie Erica 946K**  
 O C C Dixie Erica 816B

O C C Exodus 712E  
 O C C Dixie Erica 971E  
 D H D Traveler 6807#  
 Dixie Erica of C H 1019



**5**  
**Sons Sell**

BW	WW	Milk	YW	Scrotal	Marb	RE	Fat
<b>+0.0</b>	<b>+47</b>	<b>+24</b>	<b>+78</b>	<b>+0.50</b>	<b>-0.07</b>	<b>+1.01</b>	<b>+0.024</b>
CED	\$EN	\$W	\$F	\$G	\$B		
<b>+8</b>	<b>8.72</b>	<b>46.94</b>	<b>21.25</b>	<b>11.36</b>	<b>52.90</b>		

Calving ease sire with added thickness. Sires moderate framed, wide based, and deep bodied cattle with the good fleshing ability typical of the OCC lines of cattle. A breed leader for REA, \$W, and \$EN.



**Coleman Lucy 572**  
 Grand Dam of Lot 104



**Ox Bow Manor 443**  
 Dam of Lots 105 and 106

## 104

### Ox Bow Missing Link 3213

**Bull** Tag 184 Calved 1/25/13 Reg. 17670365  
 O C C Headliner 661H  
**O C C Missing Link 830M**  
 O C C Dixie Erica 946K

Indiv. Performance	
Birth Wt	<b>94</b>
205 Wt	<b>750</b>
365 Wt	<b>1284</b>
IMF	<b>3.43/101</b>
REA	<b>14.3/101</b>
Rib Fat	<b>0.30/103</b>

Woodhill Foresight#  
**Ox Bow Lucy 184**  
 Coleman Lucy 572

Papa Forte 1921#  
 Bon View Gammer 85  
 Wulffs Ext 6106#  
 A Plus Lucy 9228

CED	BW	WW	Milk	YW	\$W	\$B	Dam Production
<b>+1</b>	<b>+2.9</b>	<b>+55</b>	<b>+26</b>	<b>+90</b>	<b>34.03</b>	<b>73.34</b>	<b>1 WR 116</b>

- Recommended for cows
- Solid maternal lineage on the bottom with Foresight, Wulff's EXT and Traveler 9929
- He will add moderation and muscle without sacrificing performance

## 105

### Ox Bow Missing Link 3348

**Bull** Tag 0104 Calved 1/30/13 Reg. +17682228  
 O C C Headliner 661H  
**O C C Missing Link 830M**  
 O C C Dixie Erica 946K

Indiv. Performance	
Birth Wt	<b>72</b>
205 Wt	<b>605</b>
365 Wt	<b>1059</b>
IMF	<b>3.39/95</b>
REA	<b>13.2/97</b>
Rib Fat	<b>0.30/100</b>

N Bar Emulation EXT#  
**Ox Bow Manor 443#**  
 Ox Bow Manor 037

Emulation N Bar 5522#  
 N Bar Primrose 2424  
 V D A R Rito 953#  
 Ox Bow Manor 555

CED	BW	WW	Milk	YW	\$W	\$B	Dam Production
<b>+8</b>	<b>-0.9</b>	<b>+40</b>	<b>+23</b>	<b>+69</b>	<b>34.05</b>	<b>38.62</b>	<b>7 WR 102</b>

- Recommended for heifers or cows
- ET Pathfinder EXT dam is one of the most exceptional phenotype and udder quality females we've produced
- Will make durable and easy fleshing range females with superb udders
- Smaller framed with well balanced rib and muscle design

## 106

### Ox Bow Missing Link 3335

**Bull** Tag 0134 Calved 2/3/13 Reg. +17682228  
 O C C Headliner 661H  
**O C C Missing Link 830M**  
 O C C Dixie Erica 946K

Indiv. Performance	
Birth Wt	<b>86</b>
205 Wt	<b>594</b>
365 Wt	<b>1127</b>
IMF	<b>2.73/77</b>
REA	<b>12.2/90</b>
Rib Fat	<b>0.30/100</b>

N Bar Emulation EXT#  
**Ox Bow Manor 443#**  
 Ox Bow Manor 037

Emulation N Bar 5522#  
 N Bar Primrose 2424  
 V D A R Rito 953#  
 Ox Bow Manor 555

CED	BW	WW	Milk	YW	\$W	\$B	Dam Production
<b>+8</b>	<b>+0.9</b>	<b>+38</b>	<b>+23</b>	<b>+67</b>	<b>30.48</b>	<b>41.36</b>	<b>7 WR 102</b>

- Recommended for heifers or cows
- ET Very similar type and kind to flush brother Lot 105
- Look at these flush brothers to add consistency and produce low input dry range females



**107****Ox Bow Missing Link 3336**

<b>Bull</b>	Tag 596	Calved 2/4/13	Reg. +17670452
O C C Headliner 661H	O C C Emblazon 854E#	Indiv. Performance	
<b>O C C Missing Link 830M</b>	O C C Juanada 858F#	Birth Wt	<b>63</b>
O C C Dixie Erica 946K	O C C Glory 950G#	205 Wt	<b>588</b>
	O C C Dixie Erica 816B	365 Wt	<b>1146</b>
N Bar Emulation EXT#	Emulation N Bar 5522#	IMF	<b>3.92/110</b>
<b>Ox Bow Manor 5121</b>	N Bar Primrose 2424	REA	<b>14.0/103</b>
Sitz Manor 3609	Papa Rito Power 7868	Rib Fat	<b>0.37/123</b>
	Sitz Manor 3134#	Dam Production	
<b>+5</b>	<b>-2.1</b>	<b>+41</b>	<b>+22</b>
		<b>+70</b>	<b>35.36</b>
		<b>56.81</b>	<b>6 WR 101</b>

- Recommended for cows
- ET Dam is a direct EXT daughter of our foundation Manor female from Sitz
- Moderate with the rib to make efficient grass based cattle

**Ox-Bow-Missing-Link-1290**

Sire of Lots 109 - 111

**Sitz-Florabelle-Fanny-1098**

Grand Dam of Lot 108

**108****Ox Bow Missing Link 3566**

<b>Bull</b>	Tag 038	Calved 2/16/13	Reg. 17670444
O C C Headliner 661H	O C C Emblazon 854E#	Indiv. Performance	
<b>O C C Missing Link 830M</b>	O C C Juanada 858F#	Birth Wt	<b>105</b>
O C C Dixie Erica 946K	O C C Glory 950G#	205 Wt	<b>647</b>
	O C C Dixie Erica 816B	365 Wt	<b>1189</b>
H A Power Alliance 1025#	Sitz Alliance 6595#	IMF	<b>2.82/83</b>
<b>Ox Bow Florabelle Fanny 038</b>	H A Rito Lady 4167	REA	<b>13.7/96</b>
Sitz Florabelle Fanny 1098	D H D Traveler 6807#	Rib Fat	<b>0.18/62</b>
	Sitz Florabelle Fanny 706	Dam Production	
<b>-3</b>	<b>+3.9</b>	<b>+47</b>	<b>+25</b>
		<b>+80</b>	<b>26.96</b>
		<b>64.97</b>	<b>1 WR 100</b>

- Recommended for cows
- Dam lost a calf and ran dry contributing to birth weight
- Super power and maternal pedigree, third dam by Right Time
- Moderate framed with a thick wide top and loin

**109****Ox Bow Missing Link 3317**

<b>Bull</b>	Tag 816	Calved 2/7/13	Reg. 17663899
O C C Missing Link 830M	O C C Headliner 661H	Indiv. Performance	
<b>Ox Bow Missing Link 1290</b>	O C C Dixie Erica 946K	Birth Wt	<b>87</b>
Ox Bow Manor 5155	N Bar Emulation EXT#	205 Wt	<b>679</b>
	Ox Bow Manor 918#	365 Wt	<b>1274</b>
Woodhill Foresight#	Papa Forte 1921#	IMF	<b>3.14/92</b>
<b>Ox Bow Eisa Evergreen 816</b>	Bon View Gammer 85	REA	<b>16.5/116</b>
Ox Bow Eisa Evergreen 5104	Rito 616 of 4B20 6807#	Rib Fat	<b>0.24/83</b>
	Ox Bow Eisa Evergreen 328	Dam Production	
<b>+2</b>	<b>+1.8</b>	<b>+50</b>	<b>+24</b>
		<b>+86</b>	<b>32.82</b>
		<b>74.97</b>	<b>3 WR 101</b>

- Recommended for cows
- 3/4 blood brother to Lots 110-111
- Strong udder quality and carcass value cow family, dam had top carcass ultrasound ratios of her contemporary group
- Bigger framed than most of the Missing Link blood, has the length, depth and muscle to create pounds

**110****Ox Bow Missing Link 3255**

<b>Bull</b>	Tag 908	Calved 2/28/13	Reg. 17663860
O C C Missing Link 830M	O C C Headliner 661H	Indiv. Performance	
<b>Ox Bow Missing Link 1290</b>	O C C Dixie Erica 946K	Birth Wt	<b>89</b>
Ox Bow Manor 5155	N Bar Emulation EXT#	205 Wt	<b>623</b>
	Ox Bow Manor 918#	365 Wt	<b>1223</b>
Woodhill Foresight#	Papa Forte 1921#	IMF	<b>3.54/104</b>
<b>Ox Bow Blackette Lady 908</b>	Bon View Gammer 85	REA	<b>13.3/94</b>
Ox Bow Blackette Lady 359	Vermilion Dateline 7078#	Rib Fat	<b>0.38/131</b>
	Gdar Blackette Lady 720	Dam Production	
<b>+2</b>	<b>+2.4</b>	<b>+50</b>	<b>+21</b>
		<b>+86</b>	<b>30.15</b>
		<b>69.50</b>	<b>3 WR 93</b>

- Recommended for cows
- Longevity, Traveler 23-4 great grand dam and top selling cow of our 2005 female sale has 13 calves on record
- Very moderate and wide tracking with explosive top and quarter muscle

**111****Ox Bow Missing Link 3244**

<b>Bull</b>	Tag 997	Calved 3/10/13	Reg. 17663856
O C C Missing Link 830M	O C C Headliner 661H	Indiv. Performance	
<b>Ox Bow Missing Link 1290</b>	O C C Dixie Erica 946K	Birth Wt	<b>90</b>
Ox Bow Manor 5155	N Bar Emulation EXT#	205 Wt	<b>732</b>
	Ox Bow Manor 918#	365 Wt	<b>1225</b>
Woodhill Foresight#	Papa Forte 1921#	IMF	<b>4.58/134</b>
<b>Ox Bow Polly 997</b>	Bon View Gammer 85	REA	<b>13.6/96</b>
Ox Bow Polly 306#	N Bar Emulation EXT#	Rib Fat	<b>0.27/93</b>
	V D A R Polly 5022	Dam Production	
<b>+1</b>	<b>+2.7</b>	<b>+53</b>	<b>+26</b>
		<b>+88</b>	<b>33.37</b>
		<b>72.31</b>	<b>3 WR 105</b>

- Recommended for cows
- Pathfinder grand dam and her flush sisters have transformed our Polly cow family into one of our most range efficient
- Very good EXT females top and bottom of the pedigree
- Clean made with the depth, length and muscle to make pounds or durable and easy fleshing, quality uddered, range females

**Ox-Bow-Manor-1153**

Full Sister to Ox Bow Missing Link 1290



## Connealy Thunder

Calved 1/28/05

Reg. 15148659 #

Jauer 353 Traveler 589 27#  
**Baldrige Kaboom K243 KCF#**  
Pleasanta of Conanga 736

Jauer 7111 Traveler 353 719  
Jauer 6807 Traveler 27 085  
G T Maximum#  
Pleasant Pill of Conanga#

Bon View Bando 598#  
**Parka of Conanga 241#**  
Partina of Conanga 6237

Tehama Bando 155#  
Bon View Dora 56#  
Schoenes Fix It 826#  
Party Date of Conanga

BW	WW	Milk	YW	Scrotal	Marb	RE	Fat
-0.6	+46	+29	+90	+0.43	+0.31	+0.84	-0.033
CED	\$EN	\$W	\$F	\$G	\$B		
+11	1.39	47.28	36.96	33.45	75.64		



**4**  
Sons Sell

Proven Pathfinder sire with a negative birth EPD and a + 11 CED value. Connealy Thunder is very easy calving and his progeny are docile with big ribeyes. Thunder daughters are gaining attention nationally as deep ribbed, easy fleshing, beautiful cows with nice udders and small teats.



## Ox Bow Thunder 3578

Tag 737

Calved 1/31/13

Reg. +17663930

Baldrige Kaboom K243 KCF#  
**Connealy Thunder#**  
Parka of Conanga 241#

Jauer 353 Traveler 589 27#  
Pleasanta of Conanga 736  
Bon View Bando 598#  
Partina of Conanga 6237

Indiv. Performance	
Birth Wt	<b>78</b>
205 Wt	<b>632</b>
365 Wt	<b>1170</b>
IMF	<b>2.69/100</b>
REA	<b>13.6/100</b>
Rib Fat	<b>0.26/100</b>

N Bar Emulation EXT#  
**Ox Bow Manor 5121**  
Sitz Manor 3609

Emulation N Bar 5522#  
N Bar Primrose 2424  
Papa Rito Power 7868  
Sitz Manor 3134#

CED	BW	WW	Milk	YW	\$W	\$B	Dam Production
<b>I+6</b>	<b>I+0.5</b>	<b>I+41</b>	<b>I+25</b>	<b>I+77</b>	<b>33.66</b>	<b>62.99</b>	<b>6 WR 101</b>

- Recommended for larger heifers or cows
- ET Donor dam by EXT is a direct daughter of our foundation Sitz Manor 3609 with over 100 descendants in the herd
- Flush sister was a highlight single lot heifer in our fall female sale bringing \$3750
- Bigger framed with the look and credentials to make durable and long lasting range cows or attractive patterned feeders



## Ox Bow Thunder 3297

Tag 7136

Calved 2/5/13

Reg. +17663884

Baldrige Kaboom K243 KCF#  
**Connealy Thunder#**  
Parka of Conanga 241#

Jauer 353 Traveler 589 27#  
Pleasanta of Conanga 736  
Bon View Bando 598#  
Partina of Conanga 6237

Indiv. Performance	
Birth Wt	<b>89</b>
205 Wt	<b>606</b>
365 Wt	<b>1182</b>
IMF	<b>3.09/87</b>
REA	<b>12.9/95</b>
Rib Fat	<b>0.26/87</b>

N Bar Emulation EXT#  
**Ox Bow Manor 5121**  
Sitz Manor 3609

Emulation N Bar 5522#  
N Bar Primrose 2424  
Papa Rito Power 7868  
Sitz Manor 3134#

CED	BW	WW	Milk	YW	\$W	\$B	Dam Production
<b>I+6</b>	<b>+1.0</b>	<b>+37</b>	<b>+25</b>	<b>+73</b>	<b>27.54</b>	<b>63.35</b>	<b>6 WR 101</b>

- Recommended for larger heifers or cows
- ET Very similar type and kind to flush brother Lot 112



## Ox Bow Thunder 3269

Tag 900

Calved 2/7/13

Reg. 17663866

Baldrige Kaboom K243 KCF#  
**Connealy Thunder#**  
Parka of Conanga 241#

Jauer 353 Traveler 589 27#  
Pleasanta of Conanga 736  
Bon View Bando 598#  
Partina of Conanga 6237

Indiv. Performance	
Birth Wt	<b>90</b>
205 Wt	<b>627</b>
365 Wt	<b>1173</b>
IMF	<b>4.04/118</b>
REA	<b>14.0/99</b>
Rib Fat	<b>0.25/86</b>

S A V 8180 Traveler 004#  
**Ox Bow Hyalite 900**  
Ox Bow Hyalite 5143

Sitz Traveler 8180#  
Boyd Forever Lady 8003  
G A R Expectation 4915#  
Ox Bow Hyalite 324

CED	BW	WW	Milk	YW	\$W	\$B	Dam Production
<b>+6</b>	<b>+1.8</b>	<b>+46</b>	<b>+25</b>	<b>+86</b>	<b>29.00</b>	<b>75.32</b>	<b>3 WR 102</b>

- Recommended for cows
- Attractive, moderate and easy fleshing, good uddered dam is one of our best Traveler 004 daughters
- Long and eye appealing with a really straight top and square rump



Lot 115



## Ox Bow Thunder 3356

Tag 791

Calved 2/10/13

Reg. 17663921

Baldrige Kaboom K243 KCF#  
**Connealy Thunder#**  
Parka of Conanga 241#

Jauer 353 Traveler 589 27#  
Pleasanta of Conanga 736  
Bon View Bando 598#  
Partina of Conanga 6237

Indiv. Performance	
Birth Wt	<b>93</b>
205 Wt	<b>693</b>
365 Wt	<b>1272</b>
IMF	<b>2.95/86</b>
REA	<b>14.3/99</b>
Rib Fat	<b>0.33/103</b>

Coleman Right Time 334  
**Ox Bow Lady Blackbird 791**  
Ox Bow Lady Blackbird 470

Leachman Right Time#  
Coleman Miss Wix 923  
Ox Bow Dateline 2200  
Ox Bow Lady Blackbird 265

CED	BW	WW	Milk	YW	\$W	\$B	Dam Production
<b>+7</b>	<b>+0.7</b>	<b>+42</b>	<b>+25</b>	<b>+77</b>	<b>30.42</b>	<b>68.89</b>	<b>4 WR 99</b>

- Recommended for larger heifers or cows
- Dam has 4 births @ 99, grand dam 8 births @ 95, exceptional udder quality cow family
- Moderate and wide based with tremendous top and quarter width





**reference  
sire**

### Cole Creek Cedar Ridge 1V

Calved 3/5/08

Reg. 16134394

C H Quantum 6247#  
**Cole Creek Black Cedar 46P**  
Cole Creek Clova Juanada 67

HBR Encore 0544  
**Cole Creek Clovanada 49S#**  
Cole Creek Clovanada 709#

C H Quantum 3330#  
C H Blackbird 0136  
A A R Windy Ridge 523#  
Cole Creek Clova Juanada 811

Shoshone Encore 6310  
C A R Miss Forever 546  
C H Quantum 6247#  
Cole Creek Clovanada 397

Cedar Ridge offers exceptional outcross calving ease. Calves are short gestation and come extremely easy. Sons are deep and easy doing with an attractive and expressly muscled pattern. Moderate and deep daughters look like they will be real harsh range producers. A good bull to help moderate frame size and add fleshing ability and quality muscle. He carries a +14 CED value along with high Ribeye, Marbling, and \$ B values. High docility and scrotal as well.

BW	WW	Milk	YW	Scrotal	Marb	RE	Fat
-0.9	+46	+36	+80	+1.27	+0.55	+0.56	+0.057
CED	\$EN	\$W	\$F	\$G	\$B		
+14	-5.45	51.74	24.20	31.38	70.66		

### 116 Ox Bow Cedar Ridge 3346

Tag 9131

Calved 1/29/13

Reg. 17663915

**Bull**  
Cole Creek Black Cedar 46P  
**Cole Creek Cedar Ridge 1V**  
Cole Creek Clovanada 49S#

C H Quantum 6247#  
Cole Creek Clova Juanada 67  
HBR Encore 0544  
Cole Creek Clovanada 709#

Redland Emblazon 3234  
**Ox Bow Manor 9131**  
Ox Bow Manor 3123

O C C Emblazon 854E#  
Redland Edella 2079  
N Bar Emulation EXT#  
Ox Bow Manor 169

Indiv. Performance	
Birth Wt	<b>83</b>
205 Wt	<b>585</b>
365 Wt	<b>1071</b>
IMF	<b>3.50/103</b>
REA	<b>12.1/85</b>
Rib Fat	<b>0.38/131</b>

CED	BW	WW	Milk	YW	\$W	\$B	Dam Production
<b>+9</b>	<b>+1.2</b>	<b>+42</b>	<b>+26</b>	<b>+70</b>	<b>33.02</b>	<b>42.37</b>	<b>3 WR 93</b>

- Recommended for heifers or cows
- Very moderate with the range durability and efficiency to work in a low input environment

### 118 Ox Bow Cedar Ridge 3565

Tag 9132

Calved 2/17/13

Reg. 17663924

**Bull**  
Cole Creek Black Cedar 46P  
**Cole Creek Cedar Ridge 1V**  
Cole Creek Clovanada 49S#

C H Quantum 6247#  
Cole Creek Clova Juanada 67  
HBR Encore 0544  
Cole Creek Clovanada 709#

Redland Emblazon 3234  
**Ox Bow Manor 9132**  
Ox Bow Manor 6141#

O C C Emblazon 854E#  
Redland Edella 2079  
Ox Bow Bushwacker 4243  
Ox bow Manor 301#

Indiv. Performance	
Birth Wt	<b>91</b>
205 Wt	<b>713</b>
365 Wt	<b>1225</b>
IMF	<b>3.63/106</b>
REA	<b>13.7/96</b>
Rib Fat	<b>0.27/93</b>

CED	BW	WW	Milk	YW	\$W	\$B	Dam Production
<b>+8</b>	<b>+1.4</b>	<b>+54</b>	<b>+31</b>	<b>+86</b>	<b>39.82</b>	<b>66.82</b>	<b>2 WR 101</b>

- Recommended for larger heifers or cows
- 2nd and 3rd dam are Pathfinders from our top cow family
- Moderate and correct, deep sided with good muscle through the top, quarter, and stifle

### 117 Ox Bow Cedar Ridge 3282

Tag 793

Calved 2/4/13

Reg. 17663875

**Bull**  
Cole Creek Black Cedar 46P  
**Cole Creek Cedar Ridge 1V**  
Cole Creek Clovanada 49S#

C H Quantum 6247#  
Cole Creek Clova Juanada 67  
HBR Encore 0544  
Cole Creek Clovanada 709#

Redland Emblazon 3234  
**Ox Bow Blackette Lady 793**  
Ox Bow Blackette Lady 278

O C C Emblazon 854E#  
Redland Edella 2079  
Garrison 8128 Dynamite  
Gdar Blackette Lady 720

Indiv. Performance	
Birth Wt	<b>84</b>
205 Wt	<b>709</b>
365 Wt	<b>1197</b>
IMF	<b>3.32/97</b>
REA	<b>16.1/111</b>
Rib Fat	<b>0.35/109</b>

CED	BW	WW	Milk	YW	\$W	\$B	Dam Production
<b>+10</b>	<b>-0.4</b>	<b>+45</b>	<b>+29</b>	<b>+72</b>	<b>38.10</b>	<b>55.40</b>	<b>5 WR 99</b>

- Recommended for heifers or cows
- Structurally correct and easy fleshing, low birth weight dam has 5 births @ 96
- Moderate and deep with good muscle throughout



**Ox-Bow-Cedar-Ridge-2240**  
Top selling bull in our 2013 sale, this Cedar Ridge son went to Spring Cove Angus Ranch in Idaho





**Woodhill-Foresight**  
Sire of Lots 119 and 120



**M-Diamond-Driveline-170**  
Sire of Lots 121 and 122

**119** **Ox Bow Foresight 3302**  
Bull Tag 713 Calved 1/28/13 Reg. +17683089

Papa Forte 1921# <b>Woodhill Foresight#</b> Bon View Gammer 85	Papa Optima 9818 Papa Ervious Blackbird 8832 Bon View Bando 598# Bon View Gammer 233	Indiv. Performance Birth Wt <b>100</b> 205 Wt <b>682</b> 365 Wt <b>1256</b> IMF <b>4.38/123</b> REA <b>14.3/105</b> Rib Fat <b>0.25/83</b>
B A R Ext Traveler 205# <b>Ox Bow Lucy 579#</b> Ox Bow Lucy 379	N Bar Emulation EXT# B A R Queen Traveler 3015# Sitz Traveler 7594 VDAR Lucy 8063	
CED <b>+2</b> BW <b>+4.6</b> WW <b>+56</b> Milk <b>+26</b> YW <b>+94</b> \$W <b>31.54</b> \$B <b>83.51</b>	Dam Production <b>5 WR 107</b>	

- Recommended for cows
- ET Pathfinder dam is one of our top performance producers
- Dam is a super high volume female that really passes middle and muscle

**120** **Ox Bow Foresight 3342**  
Bull Tag 575 Calved 1/28/13 Reg. +17683088

Papa Forte 1921# <b>Woodhill Foresight#</b> Bon View Gammer 85	Papa Optima 9818 Papa Ervious Blackbird 8832 Bon View Bando 598# Bon View Gammer 233	Indiv. Performance Birth Wt <b>97</b> 205 Wt <b>627</b> 365 Wt <b>1112</b> IMF <b>3.49/98</b> REA <b>13.5/99</b> Rib Fat <b>0.24/80</b>
B A R Ext Traveler 205# <b>Ox Bow Lucy 579#</b> Ox Bow Lucy 379	N Bar Emulation EXT# B A R Queen Traveler 3015# Sitz Traveler 7594 VDAR Lucy 8063	
CED <b>+2</b> BW <b>+4.9</b> WW <b>+52</b> Milk <b>+26</b> YW <b>+90</b> \$W <b>28.00</b> \$B <b>68.91</b>	Dam Production <b>5 WR 107</b>	

- Recommended for cows
- ET Pathfinder dam is one of our top performance producers
- Dam is a super high volume female that really passes middle and muscle

**121** **Ox Bow Driveline 3249**  
Bull Tag 0110 Calved 3/2/13 Reg. 17663858

Connealy Freightliner# <b>M Diamond Driveline 170</b> Baldrige Blackcap Mary N92	Bon View Bando 598# Joana Erica of Conanga Sitz Alliance 6595# Baldrige Blackcap Mary 145K	Indiv. Performance Birth Wt <b>87</b> 205 Wt <b>681</b> 365 Wt <b>1291</b> IMF <b>3.35/98</b> REA <b>14.6/103</b> Rib Fat <b>0.38/131</b>
Sitz Dash 10277 <b>Ox Bow Blackcap 0110</b> Ox Bow Blackcap 756	Sitz Upward 307R# Sitz Everelda Entense 2665 O C C Emblazon 854E# Ox Bow Blackcap 361#	
CED <b>+8</b> BW <b>+1.7</b> WW <b>+49</b> Milk <b>+25</b> YW <b>+83</b> \$W <b>33.64</b> \$B <b>77.28</b>	Dam Production <b>2 WR 101</b>	

- Recommended for heifers or cows
- Pathfinder third dam by Alliance 6595 makes him double bred to this maternal giant
- Nice front and smooth shoulder with good thickness and eye appeal

**122** **Ox Bow Driveline 3262**  
Bull Tag 0148 Calved 3/12/13 Reg. 17663863

Connealy Freightliner# <b>M Diamond Driveline 170</b> Baldrige Blackcap Mary N92	Bon View Bando 598# Joana Erica of Conanga Sitz Alliance 6595# Baldrige Blackcap Mary 145K	Indiv. Performance Birth Wt <b>98</b> 205 Wt <b>748</b> 365 Wt <b>1255</b> IMF <b>4.39/129</b> REA <b>14.2/100</b> Rib Fat <b>0.26/90</b>
Sitz Dash 10277 <b>Ox Bow Elsiemere 0148</b> Ox Bow Elsiemere 7144	Sitz Upward 307R# Sitz Everelda Entense 2665 O C C Emblazon 854E# Ox Bow Elsiemere 503	
CED <b>+5</b> BW <b>+3.3</b> WW <b>+52</b> Milk <b>+26</b> YW <b>+88</b> \$W <b>30.72</b> \$B <b>83.96</b>	Dam Production <b>2 WR 112</b>	

- Recommended for cows
- Moderate and easy fleshing dam with a near perfect udder
- Younger bull with exceptional weaning performance
- Attractive profile, nice fronted with good depth and strong top and quarter muscle



**Ox-Bow-Polly-645**  
Outstanding Foresight Daughter in Production and  
Dam of Lot 43 in this Sale





**124 Ox Bow Foundation 3571**  
**Bull** Tag 0116 Calved 2/12/13 Reg. 17663926

R R Rito 707#	Rito N Bar	Indiv. Performance
<b>Coleman Foundation 972</b>	Eriskay of Rollin Rock 3	Birth Wt <b>81</b>
Coleman Donna 386	Basin Rainmaker 654X#	205 Wt <b>652</b>
	KMK Donna J311	365 Wt <b>1159</b>
Woodhill Foresight#	Papa Forte 1921#	IMF <b>4.10/120</b>
<b>Ox Bow Lady Ida 0116</b>	Bon View Gammer 85	REA <b>15.0/106</b>
Ox Bow Lady Ida 558#	O C C Emblazon 854E#	Rib Fat <b>0.37/128</b>
	Ox Bow Lady Ida 286#	

CED	BW	WW	Milk	YW	\$W	\$B	Dam Production
<b>+7</b>	<b>+0.9</b>	<b>+48</b>	<b>+22</b>	<b>+78</b>	<b>34.96</b>	<b>50.02</b>	<b>2 WR 101</b>

- Recommended for heifers or cows
- Grand dam and great grand dam are Pathfinders
- Very moderate framed and loaded with muscle
- Deep, easy fleshing and efficient body type for harsh environments



**123 Ox Bow Rainmaker 3286**  
**Bull** Tag 7122 Calved 1/30/13 Reg. 17663877

Sitz Rainmaker 6169#	Sitz Rainmaker 8987	Indiv. Performance
<b>Sitz Rainmaker 9723</b>	Sitz Barbaramere Jet 3007	Birth Wt <b>95</b>
Sitz Miss Burgess 1591#	Sitz Alliance 6595#	205 Wt <b>760</b>
	Sitz Miss Burgess 3535	365 Wt <b>1269</b>
S A V Final Answer 0035#	Sitz Traveler 8180#	IMF <b>3.96/116</b>
<b>Ox Bow Lucy 7122</b>	S A V Emulous 8145	REA <b>13.3/92</b>
Ox Bow Lucy 579#	B A R Ext Traveler 205#	Rib Fat <b>0.27/84</b>
	Ox Bow Lucy 379	

CED	BW	WW	Milk	YW	\$W	\$B	Dam Production
<b>+5</b>	<b>+2.8</b>	<b>+57</b>	<b>+21</b>	<b>+97</b>	<b>31.57</b>	<b>64.21</b>	<b>4 WR 100</b>

- Recommended for cows
- Pathfinder grand dam is one of our all time top performance producers
- A tick bigger frame with good balance of length, depth, and thickness to really produce pounds

**Special thanks to all our buyers and bidders and a big thank you to all our past bull buyers. We really appreciate your business and friendship. May you have a healthy, happy and prosperous year!**



## FIRST YEAR BREEDING GUARANTEE

With the reality that sometimes young bulls become injured during their first breeding season, we have worked to come up with a fair and reasonable way to share this risk with our bull customers. With customers that wanted the insurance, we shared one-half the premium cost for coverage on the bulls to lower your risk. We have decided to continue sharing one-half the risk during this transitional period with the following breeding guarantee.

### GUARANTEE

All bulls selling for \$2000 or more will be covered 50% by Ox Bow Ranch if they are injured during their first breeding season and not able to return to service during that first breeding season. Breeding season is defined as the 90-day period following the first turnout of the bulls.

50% of the value of the injured bull, minus one-half salvage value, will be given as credit in a future sale or toward a replacement bull if one is available. Salvage value, if any, will be split equally between Ox Bow Ranch and the buyer. All injured bulls must be diagnosed by a veterinarian. Please notify us as soon as possible should injury occur and prior to the injured bull being sold for salvage. All claims must be made by September 1, 2014.

- Example 1: A \$5,000 bull is injured, a credit of \$2,500 minus one-half any salvage value will be given to the buyer.  
 Example 2: A \$2,000 bull is injured, a credit of \$1,000 minus one-half of any salvage value will be given to the buyer.  
 Example 3: A \$1,750 bull is injured, no credit is given. Buyer retains all salvage value.



This catalog is proudly produced in Montana and printed on FSC certified, 100% PCRE, American made paper.






Thanks for  
Coming!



O  
X

 Ox Bow Ranch

# Ox Bow Ranch

Chris and Nora Hohenlohe, Owners  
P.O. Box 215  
Wolf Creek, MT 59648

Presorted  
FIRST CLASS  
US Postage  
Paid  
Permit No. 6  
Hobson, MT

**Contact:**

Ken Cook, Manager  
Home: 406/ 235-4281  
Cell: 406/ 431-7381  
oxbow@3riversdbs.net

Marcy Livestock Services  
George Marcy  
308/ 430-2005



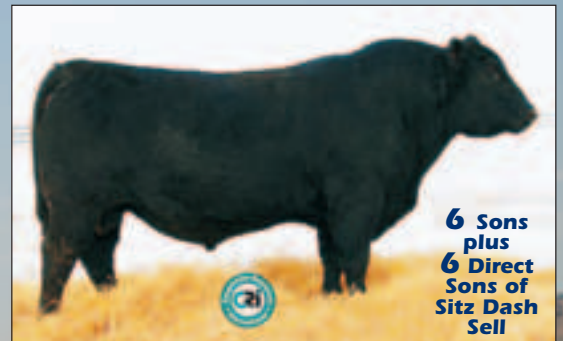
GDAR Game Day 449



S A V Final Answer 0035



Ox Bow Revival 1313



120 Efficient, Maternal Angus Range Bulls Sell  
Over 90 bulls are suitable for use on heifers

[www.OxBowRanchAngus.com](http://www.OxBowRanchAngus.com)

O  
X

