

# BIG DRY ANGUS RANCH

37th Annual McRae's

# Production Auction

**Thursday,  
April 17, 2025**

Lunch at noon  
Sale begins at 1:00 p.m.

**Glasgow  
Stockyards**



Visit us on the web @  
[www.bigdryangus.com](http://www.bigdryangus.com)

Seedstock Quality  
Commercial  
Common Sense

Brent and Hillari  
McRae

406-977-2778

[bdar@outlook.com](mailto:bdar@outlook.com)

Jack and Kathy  
McRae

406-557-6266

[jmcrae@midrivers.com](mailto:jmcrae@midrivers.com)

**SELLING 80 YEARLING ANGUS BULLS**



Big Dry Angus Ranch  
 Annual Production Sale April 17, 2025  
 Brent & Hillari McRae (c) 406-977-2778 406-977-2777  
 Jack & Kathy McRae (h) 406-557-6266 (c) 977-6121  
 John McRae 406-852-4481 Ben McRae 406-852-4608



## General Sale Information

Sale Held at Glasgow Stockyards Inc.  
 Glasgow MT.

· **G. S. I phone # 406-228-9306**

**Brent McRae Cell# 406-977-2778**

**John McRae Cell # 406-852-4481**

**Ben McRae Cell # 406-852-4608**

\*Sale held under the Suggested Sale terms and conditions as adopted by the American Angus Association.

\*Auctioneer: Col. Joe Goggins; 406-861-5664

\*Kurt Kangus...406-366-4190  
*Angus Journal/American Angus Association*

\*Catalog order is birth order

\*Sale order is Catalog lot order.

\*Free delivery offered on all bulls to Montana. Out of state at cost.

\*\$50 cash per bull if you haul your own from the sale sight.

\*Buyer is responsible for heifer delivery.

\*Herd health and bulls fertility tested by Dr. Lance Hughes DVM, Hobson, MT.

\*All bulls Parentage verified and Genomic Tested Free of all lethal genetic defects

### The Big Dry Guarantee

All bulls are guaranteed against breeding injury for the first breeding season (90 days from turnout). If a replacement bull is available, he will be provided, or credit, minus salvage value, toward 1 bull will be given for the following year's sale. Please report injury by October 1.



### Online and Phone Bidding

If you are unable to attend the sale, Northern Livestock Video Auction will be carrying the sale live on the internet at [www.cattleUSA.com](http://www.cattleUSA.com). Contact Northern Livestock Video at 1-866-616-5035 for details and to register. You can then bid live on the phone at 406-245-0889 through Northern Livestock Video during the auction. To view the catalog online, pre-sale video and additional information on the sale offering go to [www.northernlivestockvideo.com](http://www.northernlivestockvideo.com) and click on the Big Dry Angus sale. If you have questions, contact **Bo Bevis..(406)390-3134**.



### Our Cattle are

PROUDLY



MADE IN THE USA

**The saying goes.....you can pick your friends, but you can't pick your relatives.**

Newell, you are our first pick as a friend, a neighbor, and a relative.



In January, our family, our community, our industry...EVERYONE, lost a great young man. We are thankful for our time and memories. Your dedication to your family, your ranch, your neighbors and your work ethic are all admired and are recipes for us to replicate.

Thank you Newell.



Please accept this as your invitation to attend our 37<sup>th</sup> annual production sale on April 17 at Glasgow Stockyards, Glasgow, MT. The live auction will also be accessible on Northern Video and Cattle USA for viewing and bidding remotely.

We are offering 80 yearling bulls. They will have passed a Breeding Soundness Exam and semen evaluation prior to the sale. I believe that this set of bulls are as solid and functional as any we have offered. Scrotal measurements and yearling weights will be available, as we are scheduled for the fertility test on April 3.

The heifers are far and away the best we have ever offered. These heifers came right out of our replacements, after 3 prior sorts of culls going to town. They are the kind.

Many of the original tenets that were in place when Black Angus came to the Big Dry are as, or, more important today as they were in 1963. These guiding principles include an Angus cowherd that requires minimal management to perform the basics.

- A cowherd that calves unassisted with sagebrush as a calving shed and Mother Nature as a mid-wife. Those that fail are culled.
- A cowherd (and herd bulls) that rebreeds on native pasture, without the need for an on-staff nutritionist to formulate TMRs and feed bunks to assure fertility. Those that fail are culled.
- Cows that exhibit natural maternal (it's more than \$M) to calve, rebreed and wean a heavy-healthy calf. Those that fail are culled.
- A cowherd (and herd bulls) with calm and reasonable dispositions. Those that that fail are culled.

Our commitment to these foundational principles has allowed us to develop a herd that thrives in the challenging conditions of the Big Dry, producing cattle that are resilient, efficient, and highly productive. The genetics we offer are a testament to decades of careful selection and breeding, ensuring that each generation is better than the last.

We are incredibly proud of our program and the cattle we produce, and we are excited to share the results of our efforts with you. We look forward to welcoming you to Glasgow Stockyards to view the Big Dry Angus offering.

The McRae Families



## The bulls that make it happen

The following pages detail the herd bulls that sired this group of bulls and heifers. Most bulls are owned and used naturally, while deceased bulls listed are used artificially. By using both home-raised and purchased herd sires in pastures, adaptability to the environment and our management can be monitored. Also, we do utilize a limited amount of non-owned a.i. sires that appear to fit our parameters.

The primary goal extends beyond demonstrating their adaptability to our environment and management; it is crucial to possess genetics capable of producing feeder calves that are easily born and can grow to their maximum potential within our environmental constraints, without supplementation. Concurrently, these genetics should produce females that will develop into valuable cows, ensuring the sustainability and profitability of your cattle business.

We believe that the sires we are using will meet our criteria.



### Connealy Cool 39L Deceased

**Tattoo:** 39L      **DOB:** 2/9/2013      **Reg. No. #** 17586776

Connealy All Around  
**Sire:** Connealy Heat 0243  
 Bunty Lanna of Conanga 556  
 H A Power Alliance 1025  
**Dam:** JMc Jeena Allie 8345 5399  
 Jeena of Conanga 357

S Values	
SM	80
SW	67
SF	101
SG	52
SB	153

We purchased Cool 11 years ago at Connealy's with high hopes he would impact our program, and that, he did. As a breed leader for docility, scrotal circumference and \$M, Cool's positive influence is evident throughout the cowherd. Pathfinder Sire

EPDs Acc					Cacass EPDs Acc				
CED	Birth	Wean	Year	Milk	SC	Wt.	Marb.	Ribeye	Fat
+10	+1.0	+64	+108	+25	+1.68	+54	+0.61	+0.83	+0.025
0.80	0.93	0.92	0.85	0.77	0.88	0.70	0.67	0.63	0.66



### Big Dry Cool H21

**Tattoo:** H21      **DOB:** 3/20/2020      **Reg. No.** 19980975

Connealy Heat 0243  
**Sire:** Connealy Cool 39L  
 JMc Jeena Allie 8345 5399  
 SydGen Dealer 9883  
**Dam:** BDAR Queen Mother 345A  
 BDAR Queen Mother 915W

S Values	
SM	63
SW	52
SF	84
SG	43
SB	127

EPDs Acc					Cacass EPDs Acc				
CED	Birth	Wean	Year	Milk	SC	Wt.	Marb.	Ribeye	Fat
+7	+1.9	+57	+95	+21	+0.81	+43	+0.49	+0.37	-0.003
0.37	0.64	0.57	0.39	0.35	0.41	0.42	0.37	0.36	0.34



### Big Dry Cool H82

**Tattoo:** H82      **DOB:** 4/17/2020      **Reg. No.** 19981175

Connealy Heat 0243  
**Sire:** Connealy Cool 39L  
 JMc Jeena Allie 8345 5399  
 Connealy Courage 25L  
**Dam:** BDAR E T Duchess 538C  
 BDAR Ester Tulloch Duch 049X

S Values	
SM	74
SW	69
SF	84
SG	42
SB	126

EPDs Acc					Cacass EPDs Acc				
CED	Birth	Wean	Year	Milk	SC	Wt.	Marb.	Ribeye	Fat
+12	+2.1	+71	+117	+25	+1.49	+44	+0.40	+0.80	+0.028
0.35	0.62	0.55	0.38	0.32	0.40	0.39	0.34	0.33	0.31



## S McLintock 9702 Deceased

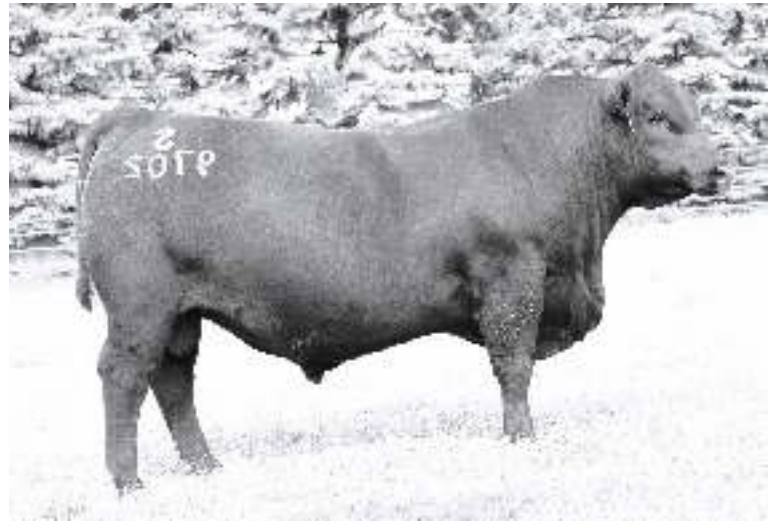
Tattoo: 9702      DOB: 3/17/2019      Reg. No. 19437694

Tehama Revere  
**Sire:** S Thrive JAS 5515  
S Selena 201

Vision Unanimous 1418  
**Dam:** S Bessie 5544  
S Bessie 0455

McIntock came us as the 2nd high selling bull at the 2020 Spickler Ranch North, ND sale. We selected McIntock for his overall mass and muscle expression. We also appreciated that both his sire and dam are Pathfinders. 15 daughters avg. 103 nursing ratio and ALL bred back.

S Values	
SM	47
SW	58
SF	118
SG	37
SB	156



EPDs Acc					Cacass EPDs Acc				
CED	Birth	Wean	Year	Milk	SC	Wt.	Marb.	Ribeye	Fat
+11	+0.4	+77	+151	+19	+1.27	+73	+0.33	+0.78	+0.038
0.41	0.79	0.74	0.57	0.41	0.62	0.46	0.40	0.40	0.37



## Big Dry Big McLin K12

Tattoo: K12      DOB: 3/17/2022      Reg. No. 20438877

S Thrive JAS 5515  
**Sire:** S McLintock 9702  
S Bessie 5544

S Foundation 514  
**Dam:** BDAR Ruby 805F  
BDAR Ruby 620D

Big McLin was retained after the untimely loss of McLintock. McLin's Pathfinder dam, traces back to a AAR New Trend daughter at B/R Rishel Angus, NE. 805F has a very good udder and was on display with McLin at side at the 2022 Montana Angus Tour, garnering many positive comments.

S Values	
SM	75
SW	74
SF	101
SG	40
SB	141

EPDs Acc					Cacass EPDs Acc				
CED	Birth	Wean	Year	Milk	SC	Wt.	Marb.	Ribeye	Fat
+9	+0.4	+73	+134	+28	+1.22	+63	+0.39	+0.69	+0.023
0.34	0.64	0.57	0.38	0.31	0.39	0.39	0.33	0.32	0.30



## Diamond Bronc H107

Tattoo: H107      DOB: 2/18/2020      Reg. No. 19936647

Baldrige Bronc  
**Sire:** 2XL Bronc 8153  
2XL Clova Pride 6230

21AR Roundup 7005  
**Dam:** Diamond Trojan Erica 0824  
Diamond Trojan Erica 2u04

Bronc was purchased as the top-selling bull at the 2021 Stevenson Diamond Dot sale. Selected for his length and fluid movement, Bronc has surpassed expectations, siring calving ease with growth. We have used Bronc on heifers with great results. His first daughters are calving easily, have very functional udders, and outstanding docility.

S Values	
SM	79
SW	85
SF	92
SG	68
SB	160



EPDs Acc					Cacass EPDs Acc				
CED	Birth	Wean	Year	Milk	SC	Wt.	Marb.	Ribeye	Fat
+12	-1.3	+80	+137	+28	+0.74	+54	+0.99	+0.80	+0.049
0.44	0.72	0.67	0.50	0.36	0.56	0.42	0.35	0.35	0.32



## Sitz Stellar 7300

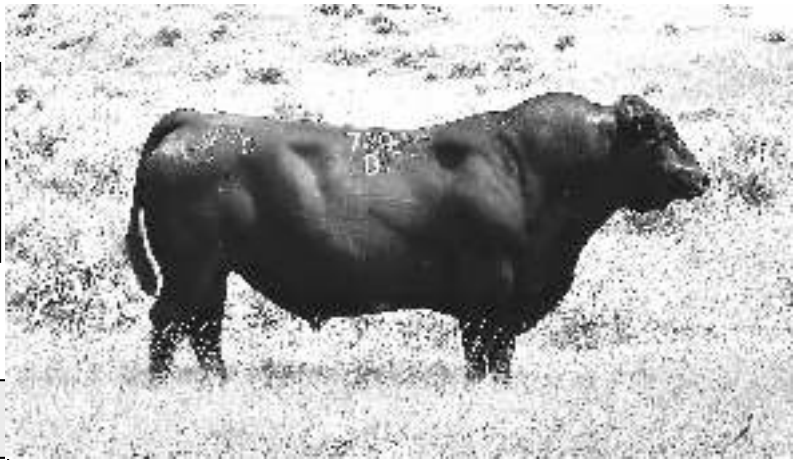
Tattoo: 7300      DOB: 2/28/2020      Reg. No. 19768983

Mohnen Substantial 272  
**Sire:** Sitz Stellar 726D  
SITZ Pride 200B

Koupals B&B Titan 3013  
**Dam:** Sitz Blackbird 3136  
Sitz Blackbird 2629

S Values	
SM	57
SW	55
SF	104
SG	43
SB	147

Stellar 7300 was purchased at Sitz Angus Ranch on the strength of his Pathfinder dam: 6@105, and granddam 8@101. Phenotypically, a beautiful bull. First daughters are calving this spring and are wonderful; best udders I have seen, nice disposition, naturally maternal.



EPDs Acc					Cacass EPDs Acc				
CED	Birth	Wean	Year	Milk	SC	Wt.	Marb.	Ribeye	Fat
+7	-0.6	+61	+112	+24	+1.21	+52	+0.58	+0.62	+0.100
0.39	0.72	0.67	0.53	0.36	0.60	0.45	0.37	0.36	0.34



## Big Dry Intuition K4

Tattoo: K4      DOB: 3/8/2022      Reg. No. 20438900

Sitz Profile 1160  
**Sire:** Sitz Intuition  
Sitz Florabelle Fanny 5053  
Tehama Tahoe B767  
**Dam:** BDAR Queen Mother 004H  
BDAR Queen Mother 849F

S Values	
SM	94
SW	76
SF	83
SG	48
SB	132

We reained K4 to serve as a clean-up bull on our heifers. K4 did that and much more by siring a nice set of calves. Calving ease is really good, but what is even better is the quality of his calves. His Pathfinder dam is very moderate Tahoe daughter whose quality shines through on K4's daughters, they are keepers.



EPDs Acc					Cacass EPDs Acc				
CED	Birth	Wean	Year	Milk	SC	Wt.	Marb.	Ribeye	Fat
+13	-0.4	+63	+106	+30	+1.05	+43	+0.73	+0.26	+0.063
0.39	0.60	0.53	0.39	0.32	0.40	0.40	0.37	0.36	0.34

Dam Production: 3 BR 99.3 WR 105, 1 YR 94



## S Jump Start 923 Deceased

Tattoo: 923      DOB: 3/2/2019      Reg. No. 19472128

Tehama Revere  
**Sire:** S Powerpoint WS 5503  
S Queen Essa 248

Shipwheel Chinook  
**Dam:** S Gloria 0406  
S Gloria 858

S Values	
SM	77
SW	56
SF	80
SG	57
SB	137

Jump Start daughters continue keep the bar high in overall quality.

Wonderful dispositions, near perfect udders, and added fertility. We appreciate the fact that both Jump Start's sire and dam are Pathfinders. Quality with longevity.

EPDs Acc					Cacass EPDs Acc				
CED	Birth	Wean	Year	Milk	SC	Wt.	Marb.	Ribeye	Fat
+12	+0.4	+62	+106	+19	+0.98	+43	+0.92	+0.57	+0.128
0.54	0.79	0.74	0.59	0.48	0.60	0.45	0.41	0.41	0.37



## S Coalition 270

Tattoo: 270      DOB: 3/1/2022      Reg. No. 20470161

HF Syndicate 213Z  
**Sire:** U-2 Coalition 206C  
U2 Erelite 109Z  
Shipwheel Chinook  
**Dam:** S Blossom 0278  
S Blossom 8378

S Values	
SM	71
SW	63
SF	86
SG	42
SB	128

Coalition 270 was purchased as an outcross clean-up sire, Every parent on the maternal side of his pedigree, including his dam, is a Pathfinder, as well as his sire. Used on heifers, Coalition 270, calved with no issues.

EPDs Acc					Cacass EPDs Acc				
CED	Birth	Wean	Year	Milk	SC	Wt.	Marb.	Ribeye	Fat
+12	-1.0	+54	+103	+39	+0.88	+42	+0.59	+0.20	+0.043
0.37	0.56	0.49	0.40	0.36	0.49	0.37	0.35	0.34	0.32



## Ellingson Badlands 0285

Tattoo: 0285      DOB: 3/4/2020      Reg. No. 19811197

Ellingson Roughrider 4202  
**Sire:** Ellingson Rider Pride 7282  
EA Queen Dolly 3246  
Koupal Advance 28  
**Dam:** EA Bells Girl 7617  
EA Bells Girl 2181

S Values	
SM	91
SW	62
SF	103
SG	45
SB	148

A.I. sire  
Popular sire across the breed for use on heifers, with enough bull there to go onto cows as well. Represented by 2 sons.

EPDs Acc					Cacass EPDs Acc				
CED	Birth	Wean	Year	Milk	SC	Wt.	Marb.	Ribeye	Fat
+14	+0.0	+62	+108	+25	+1.53	+48	+0.37	+0.97	-0.015
0.86	0.94	0.92	0.86	0.47	0.85	0.50	0.45	0.46	0.41



## S A V Renew 8132

Tattoo: 8132      DOB: 2/21/2018      Reg. No. 19250927

Rito 707 of Ideal 3407 7075  
**Sire:** S A V Renown 3439  
S A V Blackcap May 4136  
Connealy Cavalry 1149  
**Dam:** S A V Blackcap May 4593  
S A V Blackcap May 8051

S Values	
SM	82
SW	62
SF	101
SG	36
SB	137

A.I. sire  
Renew was our favorite bull at SAV the year we bought Specialist, Renew sold for far more than our budget would allow. Sires thickness and phenotype. The Lot 12 heifer should make a very nice cow. We retained a flush sister.

EPDs Acc					Cacass EPDs Acc				
CED	Birth	Wean	Year	Milk	SC	Wt.	Marb.	Ribeye	Fat
-6	+4.8	+84	+141	+18	+1.46	+59	+0.18	+1.02	-0.007
0.48	0.86	0.83	0.73	0.54	0.67	0.49	0.44	0.45	0.40



## Tehama Testament

Tattoo: J304      DOB: 8/12/2020      Reg. No. 20019500

S S Niagara Z29  
**Sire:** Tehama Patriarch F028  
Tehama Elite Blackbird D826  
Sitz Wisdom 481T  
**Dam:** Tehama Mary Blackbird E789  
Tehama Mary Blackbird Y677

S Values	
SM	91
SW	55
SF	94
SG	78
SB	172

A.I. sire  
Popular Patriarch son that we used on some heifers and a few cows. Lucky Lot 13 is an outstanding heifer sired by Testament.

EPDs Acc					Cacass EPDs Acc				
CED	Birth	Wean	Year	Milk	SC	Wt.	Marb.	Ribeye	Fat
+12	-0.8	+58	+113	+24	+2.18	+43	+1.24	+0.48	+0.029
0.83	0.93	0.90	0.85	0.36	0.84	0.51	0.46	0.47	0.42







### BDAR Zara 407M

**1** Tattoo: 407M DOB: 3/8/2024 Reg. No. 21208638

Tehama Patriarch F028  
**Sire:** Tehama Testament  
Tehama Mary Blackbird E789  
Big Dry Logo H8  
**Dam:** BDAR Zara 210K  
BDAR Zara 067H

S Values	
SM	85
SW	74
SF	85
SG	56
SB	141

EPDs Acc					Cacass EPDs Acc				
CED	Birth	Wean	Year	Milk	SC	Wt.	Marb.	Ribeye	Fat
+12	-1.0	+64	+103	+28	+1.37	+43	+0.82	+0.38	+0.035
0.35	0.54	0.46	0.36	0.27	0.38	0.36	0.33	0.32	0.30



### BDAR-BFM Queen Mother 422M

**2** Tattoo: 422M DOB: 3/23/2024 Reg. No. 21186967

Sitz Intuition  
**Sire:** Big Dry Intuition K4  
BDAR Queen Mother 004H  
Wip Bankroll 9021  
**Dam:** BDAR-BFM Queen Mother 268K  
BDAR Queen Mother 061H

S Values	
SM	69
SW	69
SF	105
SG	48
SB	153

EPDs Acc					Cacass EPDs Acc				
CED	Birth	Wean	Year	Milk	SC	Wt.	Marb.	Ribeye	Fat
+11	+0.1	+67	+113	+24	+0.30	+57	+0.52	+0.75	+0.007
0.32	0.53	0.44	0.33	0.27	0.34	0.35	0.32	0.31	0.29



### BDAR Charmer 441M

**3** Tattoo: 441M DOB: 3/30/2024 Reg. No. 21186984

Sitz Stellar 726D  
**Sire:** Sitz Stellar 7300  
Sitz Blackbird 3136  
Connealy Cool 39L  
**Dam:** BDAR Charmer 069H  
BDAR Charmer 349A

S Values	
SM	67
SW	55
SF	88
SG	54
SB	142

EPDs Acc					Cacass EPDs Acc				
CED	Birth	Wean	Year	Milk	SC	Wt.	Marb.	Ribeye	Fat
+10	-1.0	+57	+101	+23	+1.37	+40	+0.74	+0.70	+0.060
0.32	0.54	0.46	0.36	0.29	0.38	0.37	0.33	0.32	0.30

Dam Production: 3 BR 93,3 WR 93, 1 YR 96

### Herd Unit Heifers #1

Tag #'s 1-5

Selling as a group of 5 at 5X the bid price. Successful bidder can, at the conclusion of the bidding on Unit #1, purchase Herd Unit #2 at the same per head price. These heifers come right out of our replacements and have been handled the same as our replacements, being wintered on the ranch on chopped hay, CHS Peawee pellets, and Sweet Pro mineral. All heifers are DNA parentage and genomic verified by Zoetis HD50. They have received their Pre-Guard 10 vaccination.

They sell as commercials, registration papers are available for an additional \$200 per head.



### BDAR Queen Mother 442M

**4** Tattoo: 442M DOB: 3/30/2024 Reg. No. 21186985

2XL Bronc 8153  
**Sire:** Diamond Bronc H107  
Diamond Trojan Erica 0824  
Big Dry Montana Dew F50  
**Dam:** BDAR Queen Mother 140J  
BDAR Queen Mother 625D

S Values	
SM	64
SW	63
SF	59
SG	60
SB	119

EPDs Acc					Cacass EPDs Acc				
CED	Birth	Wean	Year	Milk	SC	Wt.	Marb.	Ribeye	Fat
+11	-2.1	+52	+94	+31	+1.00	+27	+0.88	+0.55	+0.049
0.32	0.53	0.45	0.35	0.28	0.37	0.35	0.32	0.30	0.29



### BDAR Lass 463M

**5** Tattoo: 463M DOB: 4/6/2024 Reg. No. 21187002

Sitz Stellar 726D  
**Sire:** Sitz Stellar 7300  
Sitz Blackbird 3136  
Coleman Bravo 6313  
**Dam:** BDAR Lass 005H  
BDAR Lass 826F

S Values	
SM	67
SW	53
SF	101
SG	42
SB	143

EPDs Acc					Cacass EPDs Acc				
CED	Birth	Wean	Year	Milk	SC	Wt.	Marb.	Ribeye	Fat
+13	-0.4	+63	+117	+17	+0.64	+47	+0.49	+0.69	+0.067
0.33	0.55	0.47	0.37	0.30	0.39	0.37	0.34	0.32	0.31

Dam Production: 3 BR 94,3 WR 87, 1 YR 90



### BDAR Pride 469M

**6** Tattoo: 469M DOB: 4/9/2024 Reg. No. 21187007

Connealy Cool 39L  
**Sire:** Big Dry Cool H21  
BDAR Queen Mother 345A  
BDAR-JDM Conception E40  
**Dam:** BDAR-JDM Blanche 936Z  
BDAR Blanche JDM 216Z

S Values	
SM	33
SW	32
SF	93
SG	27
SB	120

EPDs Acc					Cacass EPDs Acc				
CED	Birth	Wean	Year	Milk	SC	Wt.	Marb.	Ribeye	Fat
+2	+4.8	+66	+119	+11	+1.17	+50	+0.09	+0.51	-0.026
0.29	0.50	0.42	0.32	0.27	0.33	0.34	0.31	0.29	0.28

### Herd Unit Heifers #2

**Tag #'s 6-10**

Selling as a group of 5 at 5X the bid price. Successful bidder can, at the conclusion of the bidding on Unit #1, purchase Herd Unit #2 at the same per head price.

These heifers come right out of our replacements and have been handled the same as our replacements, being wintered on the ranch on chopped hay, CHS Peawee pellets, and Sweet Pro mineral. All heifers are DNA parentage and genomic verified by Zoetis HD50. They have received their Pre-Guard 10 vaccination.

They sell as commercials, registration papers are available for an additional \$200 per head.



### BDAR Jane 476M

**7** Tattoo: 476M DOB: 4/16/2024 Reg. No. 21207973

Connealy Cool 39L  
**Sire:** Big Dry Cool H21  
BDAR Queen Mother 345A  
Sitz Royal 9784  
**Dam:** BDAR Jane 729B  
BDAR Jane 450B

S Values	
SM	52
SW	66
SF	89
SG	55
SB	144

EPDs Acc					Cacass EPDs Acc				
CED	Birth	Wean	Year	Milk	SC	Wt.	Marb.	Ribeye	Fat
+9	+1.3	+62	+109	+32	+1.07	+53	+0.74	+0.61	+0.037
0.31	0.53	0.45	0.34	0.29	0.36	0.36	0.32	0.31	0.29

Dam Production: 6 BR 99,5 WR 104, 1 YR 105



### BDAR Lass 491M

**9** Tattoo: 491M DOB: 4/30/2024 Reg. No. 21187021

Connealy Cool 39L  
**Sire:** Big Dry Cool H21  
BDAR Queen Mother 345A  
SydGen Big Medicine 1558  
**Dam:** BDAR Lass 438B  
BDAR Lass 923W

S Values	
SM	69
SW	62
SF	102
SG	46
SB	148

EPDs Acc					Cacass EPDs Acc				
CED	Birth	Wean	Year	Milk	SC	Wt.	Marb.	Ribeye	Fat
+7	+2.7	+67	+116	+25	+1.06	+58	+0.51	+0.60	+0.000
0.29	0.51	0.44	0.32	0.28	0.34	0.34	0.30	0.29	0.27

Dam Production: 9 BR 100,9 WR 100, 4 YR 100



### BDAR-JDM Pride 490M

**8** Tattoo: 490M DOB: 4/30/2024 Reg. No. 21187020

Connealy Cool 39L  
**Sire:** Big Dry Cool H82  
BDAR E T Duchess 538C  
S Jump Start 923  
**Dam:** BDAR-JDM Pride 167J  
BDAR Pride 926W

S Values	
SM	53
SW	66
SF	113
SG	50
SB	163

EPDs Acc					Cacass EPDs Acc				
CED	Birth	Wean	Year	Milk	SC	Wt.	Marb.	Ribeye	Fat
+7	+4.0	+87	+150	+22	+1.15	+70	+0.46	+1.07	-0.005
0.29	0.51	0.43	0.32	0.26	0.33	0.33	0.30	0.28	0.27



### BDAR Young Lucy 492M

**10** Tattoo: 492M DOB: 4/30/2024 Reg. No. 21187022

Connealy Cool 39L  
**Sire:** Big Dry Cool H21  
BDAR Queen Mother 345A  
SAC Conversation  
**Dam:** BDAR Young Lucy 734E  
BDAR Young Lucy 437B

S Values	
SM	69
SW	70
SF	73
SG	58
SB	131

EPDs Acc					Cacass EPDs Acc				
CED	Birth	Wean	Year	Milk	SC	Wt.	Marb.	Ribeye	Fat
+2	+1.2	+57	+93	+35	+1.18	+38	+0.84	+0.53	+0.045
0.31	0.53	0.45	0.34	0.30	0.36	0.36	0.33	0.31	0.30

Dam Production: 5 BR 111,5 WR 105, 1 YR 88



### BDAR Lass 404M

**11** Tattoo: 404M DOB: 3/4/2024 Reg. No. 21186955

2XL Bronc 8153  
**Sire:** Diamond Bronc H107  
Diamond Trojan Erica 0824  
S Jump Start 923  
**Dam:** BDAR Lass 223K  
BDAR Lass 018H

BW Adj WW/Ratio  
65 546 / 102

S Values	
SM	87
SW	66
SF	80
SG	72
SB	152

Nice Bronc daughter to start the Registered Heifer lots.  
Top 10% \$M and excellent carcass genetic projections.  
Fits the criteria for "Targeting the Brand" CAB.

EPDs Acc					Cacass EPDs Acc				
CED	Birth	Wean	Year	Milk	SC	Wt.	Marb.	Ribeye	Fat
+13	-1.1	+61	+101	+23	+0.15	+40	+1.08	+0.82	+0.058
0.31	0.52	0.44	0.34	0.27	0.36	0.34	0.31	0.29	0.28



### BDAR Queen Mother 425M

**12** Tattoo: 425M DOB: 3/26/2024 Reg. No. 21186970

S A V Renown 3439  
**Sire:** S A V Renew 8132  
S A V Blackcap May 4593  
Connealy Confidence 0100  
**Dam:** BDAR Queen Mother 429B  
BDAR Queen Mother 255Z

BW Adj WW/Ratio  
86 540 / 96

S Values	
SM	76
SW	67
SF	76
SG	37
SB	113

Embryo Transfer. We select our Donor dams by their ability, raise high quality calves, but also maintain themselves and remain in the herd for many years. The Dam, 429B, excelled in both areas, recording 9@101 wwr.

EPDs Acc					Cacass EPDs Acc				
CED	Birth	Wean	Year	Milk	SC	Wt.	Marb.	Ribeye	Fat
+8	+0.6	+55	+93	+32	-0.11	+37	+0.32	+0.71	+0.029
0.33	0.54	0.47	0.38	0.33	0.39	0.37	0.34	0.33	0.31

Dam Production: 9 BR 95,9 WR 101, 3 YR 102



### BDAR Blackbird 432M

**14** Tattoo: 432M DOB: 3/28/2024 Reg. No. 21186976

S Thrive JAS 5515  
**Sire:** S McLintock 9702  
S Bessie 5544  
Connealy Confidence 0100  
**Dam:** BDAR Blackbird 439B  
BDAR Blackbird 264Z

BW Adj WW/Ratio  
66 515 / 91

S Values	
SM	42
SW	43
SF	82
SG	46
SB	129

Embryo Transfer. Another heifer out of our ET program. Her 10 year-old dam meets our criteria of performance (8@102) and sustainability within our environment, due for another calf this spring.. More moderate framed.

EPDs Acc					Cacass EPDs Acc				
CED	Birth	Wean	Year	Milk	SC	Wt.	Marb.	Ribeye	Fat
+12	-0.4	+59	+116	+16	+0.33	+45	+0.56	+0.61	+0.036
0.31	0.54	0.47	0.36	0.31	0.38	0.36	0.33	0.32	0.30



### BDAR Ruby 427M

**13** Tattoo: 427M DOB: 3/26/2024 Reg. No. 21208642

Tehama Patriarch F028  
**Sire:** Tehama Testament  
Tehama Mary Blackbird E789  
Ellingson Homestead 6030  
**Dam:** BDAR Ruby 812F  
BDAR Ruby 639D

BW Adj WW/Ratio  
92 661 / 119

S Values	
SM	56
SW	65
SF	103
SG	63
SB	165

Pathfinder Dam, recording 5@111 weaning. Exceptional Weaning ratio, right at the top of the herd. Bigger-framed, really long, and feminine.

EPDs Acc					Cacass EPDs Acc				
CED	Birth	Wean	Year	Milk	SC	Wt.	Marb.	Ribeye	Fat
+0	+3.7	+77	+140	+29	+1.63	+63	+0.76	+0.78	-0.028
0.36	0.54	0.47	0.38	0.30	0.40	0.36	0.34	0.33	0.30

Dam Production: 5 BR 98,5 WR 111, 2 YR 112



### BDAR-JDM S Blanche 473M

**15** Tattoo: 473M DOB: 4/12/2024 Reg. No. 21187011

Connealy Cool 39L  
**Sire:** Big Dry Cool H82  
BDAR E T Duchess 538C  
S Gary 9540  
**Dam:** BDAR-JDM S Blanche 103J  
S Blanche 9630

BW Adj WW/Ratio  
69 544 / 98

S Values	
SM	62
SW	64
SF	97
SG	56
SB	153

A really nice Cool H81 daughter that exhibits excellent growth EPD's, as well carrying Carcass genetic projection that elevate her "targeting the Brand" for CAB.

EPDs Acc					Cacass EPDs Acc				
CED	Birth	Wean	Year	Milk	SC	Wt.	Marb.	Ribeye	Fat
+11	+0.8	+74	+127	+20	+0.94	+55	+0.70	+0.73	+0.019
0.32	0.54	0.46	0.34	0.29	0.36	0.36	0.33	0.31	0.30



### Big Dry Jump Start M2

**16** Tattoo: M2 DOB: 3/9/2024 Reg. No. 21187035

Sire: S Powerpoint WS 5503  
S Jump Start 923  
S Gloria 0406

Dam: SydGen Blueprint  
BDAR-JDM Lucy 247K  
OCC Lucy 258

BW 79 Adj WW/Ratio 625 / 107

S Values	
SM	94
SW	70
SF	77
SG	44
SB	121

Calved unassisted from a first calf heifer, though this bull would work better on your young cows. Lot 16 is long and deep bodied, standing on a good foot. Grandam produced till she was 12 and was an embryo donor. Daughters should be keepers.

EPDs Acc					Cacass EPDs Acc				
CED	Birth	Wean	Year	Milk	SC	Wt.	Marb.	Ribeye	Fat
+8	+2.2	+69	+115	+30	+1.71	+51	+0.59	+0.49	+0.067
0.32	0.53	0.45	0.35	0.30	0.37	0.35	0.32	0.31	0.29



### Big Dry Jump Start M3

**17** Tattoo: M3 DOB: 3/10/2024 Reg. No. 21187046

Sire: S Powerpoint WS 5503  
S Jump Start 923  
S Gloria 0406

Dam: Tehama Tahoe B767  
BDAR Lass 230K  
BDAR Lass 613D

BW 65 Adj WW/Ratio 584 / 100

S Values	
SM	80
SW	51
SF	82
SG	58
SB	140

Calved unassisted from a first calf heifer. A good Jump Start to use on your heifers, started small and grew to his contemporaries average weight. Maternally bred to produce moderate daughters that will stay on the range.

EPDs Acc					Cacass EPDs Acc				
CED	Birth	Wean	Year	Milk	SC	Wt.	Marb.	Ribeye	Fat
+16	-1.5	+44	+83	+27	+0.51	+36	+1.00	+0.14	+0.093
0.33	0.53	0.45	0.36	0.30	0.37	0.36	0.33	0.32	0.30



### Big Dry Jump Start M4

**18** Tattoo: M4 DOB: 3/11/2024 Reg. No. 21187055

Sire: S Powerpoint WS 5503  
S Jump Start 923  
S Gloria 0406

Dam: S McLintock 9702  
BDAR-BFM Queen 253K  
JLF Queen of Paintrock 5113

BW 80 Adj WW/Ratio 586 / 101

S Values	
SM	72
SW	61
SF	84
SG	40
SB	125

Calved unassisted from a first calf heifer. The Jump Start-McLintock cross will make really nice females. This bull will work well on a group of young cows. Granddam is getting ready to have her 8th calf this spring.

EPDs Acc					Cacass EPDs Acc				
CED	Birth	Wean	Year	Milk	SC	Wt.	Marb.	Ribeye	Fat
+1	+2.8	+70	+119	+24	+1.17	+51	+0.43	+0.58	+0.030
0.34	0.55	0.47	0.37	0.31	0.39	0.37	0.35	0.33	0.31



### Big Dry Testament M5

**19** Tattoo: M5 DOB: 3/11/2024 Reg. No. 21208636

Sire: Tehama Patriarch F028  
Tehama Testament  
Tehama Mary Blackbird E789

Dam: S Jump Start 923  
BDAR Pride 220K  
BDAR Pride 026H

BW 83 Adj WW/Ratio 633 / 100

S Values	
SM	71
SW	58
SF	83
SG	71
SB	154

Calved unassisted from a first calf heifer. Strong maternal cowline from a line with exceptional udder quality.

EPDs Acc					Cacass EPDs Acc				
CED	Birth	Wean	Year	Milk	SC	Wt.	Marb.	Ribeye	Fat
+5	+1.9	+60	+106	+25	+1.22	+45	+1.09	+0.53	+0.029
0.34	0.50	0.42	0.37	0.28	0.38	0.35	0.34	0.32	0.30

Bulls are developed where the hills are real, not in a feedlot...cause we don't breed cows in a feedlot.



### Big Dry Jump Start M7

**20** Tattoo: M7 DOB: 3/13/2024 Reg. No. 21187086

Sire: S Powerpoint WS 5503  
S Jump Start 923  
S Gloria 0406

Dam: Tehama Tahoe B767  
BDAR Lass 237K  
BDAR Lass 441B

BW 85 Adj WW/Ratio 622 / 107

S Values	
SM	85
SW	59
SF	78
SG	57
SB	135

Calved unassisted from a first calf heifer. Weaned well with a 105 ratio. Jump Start daughters continue to impress us with their fertility, disposition and overall quality.

EPDs Acc					Cacass EPDs Acc				
CED	Birth	Wean	Year	Milk	SC	Wt.	Marb.	Ribeye	Fat
+12	+2.0	+63	+110	+22	+0.85	+40	+0.82	+0.61	+0.060
0.34	0.55	0.47	0.37	0.31	0.39	0.37	0.35	0.33	0.31



### Big Dry Jump Start M8

# 21

Tattoo: M8

DOB: 3/13/2024 Reg. No. 21187097

S Powerpoint WS 5503

Sire: S Jump Start 923  
S Gloria 0406

Tehama Tahoe B767

Dam: BDAR Queen Mother 257K  
BDAR Queen Mother 408B

BW Adj WW/Ratio  
83 584 / 100

S Values	
SM	65
SW	66
SF	100
SG	61
SB	161

Calved unassisted from a first calf heifer. Good bull for your young cows.

EPDs Acc					Cacass EPDs Acc				
CED	Birth	Wean	Year	Milk	SC	Wt.	Marb.	Ribeye	Fat
+6	+2.5	+75	+120	+21	+1.26	+57	+0.86	+0.82	+0.067
0.33	0.53	0.45	0.35	0.30	0.37	0.35	0.33	0.31	0.29

Bull calves after weaning in November, yes, the hill is real.



### Big Dry Jump Start M9

# 22

Tattoo: M9

DOB: 3/15/2024 Reg. No. 21187106

S Powerpoint WS 5503

Sire: S Jump Start 923  
S Gloria 0406

Tehama Tahoe B767

Dam: BDAR Pride 238K  
BDAR Pride 227Z

BW Adj WW/Ratio  
89 607 / 104

S Values	
SM	63
SW	53
SF	82
SG	41
SB	123

Calved unassisted from a first calf heifer. Lot 22 is a clean-made son of Jump Start out a full sister to Lot 62 that performed as expected on her first calf. This bull will work well on your young cows, keep every daughter, they will be good.

EPDs Acc					Cacass EPDs Acc				
CED	Birth	Wean	Year	Milk	SC	Wt.	Marb.	Ribeye	Fat
+7	+3.4	+69	+122	+21	+1.62	+47	+0.45	+0.75	+0.068
0.33	0.54	0.46	0.36	0.31	0.38	0.36	0.34	0.32	0.30



### Big Dry Jump Start M11

# 24

Tattoo: M11

DOB: 3/16/2024 Reg. No. 21187027

S Powerpoint WS 5503

Sire: S Jump Start 923  
S Gloria 0406

Big Dry-JDM Bravado G45

Dam: BDAR-JDM Lucy 262K  
BDAR-JDM Lucy 16

BW Adj WW/Ratio  
85 617 / 106

S Values	
SM	77
SW	72
SF	113
SG	41
SB	154

Calved unassisted from a first calf heifer. Though out of a heifer, Lot 24 is better suited for mating to older cows. The performance showed through on this long hipped good bull.

EPDs Acc					Cacass EPDs Acc				
CED	Birth	Wean	Year	Milk	SC	Wt.	Marb.	Ribeye	Fat
+8	+2.5	+78	+143	+30	+1.64	+72	+0.61	+0.44	+0.114
0.32	0.53	0.45	0.35	0.29	0.36	0.35	0.32	0.31	0.29



### Big Dry Badlands M10

# 23

Tattoo: M10

DOB: 3/15/2024 Reg. No. 21208585

Ellingson Rider Pride 7282

Sire: Ellingson Badlands 0285  
EA Bells Girl 7617

S Jump Start 923

Dam: BDAR-JDM Kate 272K  
BDAR-JDM Kate 17

BW Adj WW/Ratio  
75 639 / 110

S Values	
SM	68
SW	64
SF	92
SG	64
SB	156

Calved unassisted from a first calf heifer. Heifer friendly Ellingson Badlands son that weaned very well. This good-footed bull also carries a marbling EPD in the top 30% of the breed.

EPDs Acc					Cacass EPDs Acc				
CED	Birth	Wean	Year	Milk	SC	Wt.	Marb.	Ribeye	Fat
+10	-0.4	+70	+113	+18	+1.06	+52	+0.94	+0.69	+0.063
0.36	0.55	0.47	0.38	0.31	0.40	0.37	0.35	0.33	0.31



### Big Dry Stellar M12

# 25

Tattoo: M12

DOB: 3/19/2024 Reg. No. 21187028

Sitz Stellar 726D

Sire: Sitz Stellar 7300  
Sitz Blackbird 3136

Coleman Bravo 6313

Dam: BDAR Queen Mother 046H  
BDAR Queen Mother 641D

BW Adj WW/Ratio  
73 555 / 90

S Values	
SM	77
SW	52
SF	82
SG	40
SB	122

With Stellar, Bravo and Cool in lot 25's pedigree, you are assured of maternal excellence and add in heifer friendly too.

EPDs Acc					Cacass EPDs Acc				
CED	Birth	Wean	Year	Milk	SC	Wt.	Marb.	Ribeye	Fat
+13	-0.9	+46	+78	+26	+0.49	+35	+0.48	+0.73	+0.086
0.32	0.54	0.46	0.36	0.30	0.38	0.36	0.33	0.32	0.30



### Big Dry McLin M13

**26** Tattoo: M13 DOB: 3/19/2024 Reg. No. 21187029

S McLintock 9702  
Sire: Big Dry Big McLin K12  
BDAR Ruby 805F

S A V Rainfall 6846  
Dam: BDAR Queen Mother 130J  
BDAR Queen Mother 833F

BW Adj WW/Ratio  
90 630 / 102

S Values	
SM	72
SW	70
SF	94
SG	43
SB	137

A McLin for young cows that weaned well. Grandam and Great Granddam are Pathfinder's. Daughters should work their way to the top of your herd and stay, come rain or shine.

EPDs Acc					Cacass EPDs Acc				
CED	Birth	Wean	Year	Milk	SC	Wt.	Marb.	Ribeye	Fat
+5	+2.2	+71	+125	+29	+0.70	+60	+0.24	+1.25	-0.027
0.31	0.54	0.46	0.34	0.29	0.36	0.36	0.33	0.31	0.30



### Big Dry Stellar M16

**29** Tattoo: M16 DOB: 3/23/2024 Reg. No. 21187031

Sitz Stellar 726D  
Sire: Sitz Stellar 7300  
Sitz Blackbird 3136

SydGen Black Velvet 4423  
Dam: BDAR Miss 063H  
BDAR Miss 340A

BW Adj WW/Ratio  
94 586 / 95

S Values	
SM	44
SW	41
SF	99
SG	54
SB	153

A very complete Stellar son out of a very nice uddered Black Velvet daughter. Good bull for your young cows.

EPDs Acc					Cacass EPDs Acc				
CED	Birth	Wean	Year	Milk	SC	Wt.	Marb.	Ribeye	Fat
+4	+0.8	+50	+96	+26	+1.14	+46	+0.70	+0.75	+0.043
0.31	0.54	0.46	0.36	0.29	0.38	0.36	0.32	0.31	0.29

Dam Production: 3 BR 105,2 WR 97, 1 YR 98



### Big Dry Coalition M14

**27** Tattoo: M14 DOB: 3/21/2024 Reg. No. 21187030

U-2 Coalition 206C  
Sire: S Coalition 270  
S Blossom 0278

Big Dry Montana Dew F50  
Dam: BDAR-BFM Queen Mother 299K  
BDAR Queen Mother 568C

BW Adj WW/Ratio  
68 499 / 86

S Values	
SM	64
SW	63
SF	84
SG	56
SB	140

Calved unassisted from a first calf heifer and should be "Heifer Friendly". Lot 27 goes back to Ben's first cow, Violet. Lot 27 "Targets the Brand" for CAB

EPDs Acc					Cacass EPDs Acc				
CED	Birth	Wean	Year	Milk	SC	Wt.	Marb.	Ribeye	Fat
+7	+1.9	+62	+107	+30	+0.38	+46	+0.79	+0.59	+0.051
0.31	0.53	0.44	0.33	0.28	0.36	0.35	0.32	0.30	0.29



### Big Dry McLin M15

**28** Tattoo: M15 DOB: 3/22/2024 Reg. No. 627876686

S McLintock 9702  
Sire: Big Dry Big McLin K12  
BDAR Ruby 805F

S Jump Start 923  
Dam: BDAR Queen Mother 106J  
BDAR Lass 953G

BW Adj WW/Ratio  
95 675 / 109

S Values	
SM	
SW	
SF	
SG	
SB	

1 of the top bulls of the sale, that at this time, we are having difficulty in determining his mother...even though he was found with a parent-verified cow that had just calved, up a sagebrush coulee, by themselves, when he was still wet. Lot 28 does DNA to Big McLin.

EPDs Acc					Cacass EPDs Acc				
CED	Birth	Wean	Year	Milk	SC	Wt.	Marb.	Ribeye	Fat



### Big Dry McLin M17

**30** Tattoo: M17 DOB: 3/24/2024 Reg. No. 21187032

S McLintock 9702  
Sire: Big Dry Big McLin K12  
BDAR Ruby 805F

SydGen Escalate 9017  
Dam: BDAR Young Lucy 123J  
BDAR Young Lucy 609D

BW Adj WW/Ratio  
90 600 / 97

S Values	
SM	85
SW	67
SF	125
SG	60
SB	185

A good McLin son that will have some friends on April 17. Excellent carcass expectations, as he "Targets the Brand". Exhibits a good hip and wide top. One of the really good bulls in the sale.

EPDs Acc					Cacass EPDs Acc				
CED	Birth	Wean	Year	Milk	SC	Wt.	Marb.	Ribeye	Fat
+6	+1.4	+65	+123	+30	+0.74	+73	+0.74	+0.95	+0.018
0.30	0.53	0.45	0.33	0.27	0.34	0.35	0.31	0.30	0.28



### Big Dry McIntock M18

**31** Tattoo: M18 DOB: 3/26/2024 Reg. No. 21187033

S Thrive JAS 5515  
Sire: S McIntock 9702  
S Bessie 5544  
Connealy Confidence 0100  
Dam: BDAR Blackbird 439B  
BDAR Blackbird 264Z

BW Adj WW/Ratio  
82 711 / 114

S Values	
SM	52
SW	42
SF	104
SG	32
SB	136

Embryo Transplant. The 1st of several flush brothers from a now 11 year-old Confidence daughter that records 8 calves at 102 weaning weight ratio. This spring she'll bring in her 9th calf. Good McIntock son that clean made with heifer potential for a

EPDs Acc					Cacass EPDs Acc				
CED	Birth	Wean	Year	Milk	SC	Wt.	Marb.	Ribeye	Fat
+9	+1.7	+70	+133	+10	+0.15	+59	+0.14	+1.02	+0.025
0.32	0.55	0.48	0.37	0.32	0.39	0.37	0.35	0.33	0.31



Lot 31



### Big Dry McIntock M19

**32** Tattoo: M19 DOB: 3/27/2024 Reg. No. 21187034

S Thrive JAS 5515  
Sire: S McIntock 9702  
S Bessie 5544  
Connealy Confidence 0100  
Dam: BDAR Blackbird 439B  
BDAR Blackbird 264Z

BW Adj WW/Ratio  
89 663 / 107

S Values	
SM	51
SW	55
SF	104
SG	45
SB	149

Embryo Transplant. This flush brother of Lot 31 would prefer older cows, more performance at weaning and yearling. One of the larger Rib eye EPD's in the sale. Good bull.

EPDs Acc					Cacass EPDs Acc				
CED	Birth	Wean	Year	Milk	SC	Wt.	Marb.	Ribeye	Fat
+5	+2.6	+70	+130	+23	+0.69	+62	+0.29	+1.19	-0.035
0.32	0.55	0.48	0.37	0.32	0.39	0.38	0.35	0.33	0.31



### Big Dry Blueprint M22

**34** Tattoo: M22 DOB: 3/27/2024 Reg. No. 21187038

KM Broken Bow 002  
Sire: SydGen Blueprint  
Sitz Florabelle Fanny 4735  
Soo Line Alternative 9127W  
Dam: OCC Lucy 258  
OCC Lucy 620

BW Adj WW/Ratio  
74 584 / 94

S Values	
SM	92
SW	61
SF	71
SG	25
SB	95

Heifer friendly. This smooth shouldered son of Blueprint will work well on a group of replacement heifers. The daughters will work their way into the herd and stay. Dam recorded 10 calves at 103 average nursing ratio.

EPDs Acc					Cacass EPDs Acc				
CED	Birth	Wean	Year	Milk	SC	Wt.	Marb.	Ribeye	Fat
+9	-1.3	+47	+88	+37	+1.63	+34	+0.24	+0.12	+0.046
0.33	0.53	0.46	0.38	0.33	0.39	0.36	0.33	0.32	0.30

Dam Production: 10 BR 95,10 WR 103, 5 YR 99



### Big Dry K4 M21

**33** Tattoo: M21 DOB: 3/27/2024 Reg. No. 21187037

Sitz Intuition  
Sire: Big Dry Intuition K4  
BDAR Queen Mother 004H  
Connealy Cool 39L  
Dam: BDAR Young Lucy 212K  
BDAR Young Lucy 013H

BW Adj WW/Ratio  
72 607 / 104

S Values	
SM	89
SW	66
SF	72
SG	49
SB	121

Calved unassisted from a first calf heifer. Extra length in this upheaded-wide topped bull for your cows.

EPDs Acc					Cacass EPDs Acc				
CED	Birth	Wean	Year	Milk	SC	Wt.	Marb.	Ribeye	Fat
+4	+4.0	+77	+121	+19	+1.37	+44	+0.74	+0.07	+0.035
0.31	0.51	0.43	0.32	0.26	0.33	0.34	0.31	0.29	0.28



### Big Dry McIntock M23

**35** Tattoo: M23 DOB: 3/27/2024 Reg. No. 21187039

S Thrive JAS 5515  
Sire: S McIntock 9702  
S Bessie 5544  
Plattemere Weigh Up K360  
Dam: BDAR Carol Ann 635D  
SydGen Carol Ann 7047

BW Adj WW/Ratio  
80 634 / 103

S Values	
SM	44
SW	61
SF	99
SG	43
SB	142

Pathfinder Dam. From the same cow family that produced our herd sire BDAR Fat Cat that produced a son that worked well for Math Angus. We retained this cow's son last year to replace Specialist. Good Bull

EPDs Acc					Cacass EPDs Acc				
CED	Birth	Wean	Year	Milk	SC	Wt.	Marb.	Ribeye	Fat
+10	-0.2	+62	+123	+30	+1.15	+54	+0.45	+0.70	+0.020
0.31	0.53	0.46	0.37	0.30	0.38	0.36	0.33	0.31	0.29

Dam Production: 7 BR 102,7 WR 106, 3 YR 103



### Big Dry McIntock M24

**36** Tattoo: M24 DOB: 3/27/2024 Reg. No. 21187040

S Thrive JAS 5515  
**Sire:** S McIntock 9702  
S Bessie 5544  
S A V Resource 1441  
**Dam:** BDAR Queen Mother 842F  
BDAR Queen Mother 915W

BW Adj WW/Ratio  
90 663 / 107

S Values	
SM	52
SW	59
SF	101
SG	31
SB	131

Really-good, deep-bodied McIntock that weaned and grew well. A very solid and good cowline. It won't be hard to find this good bull in the pens. Hillari says that this is a "good bull".

EPDs Acc					Cacass EPDs Acc				
CED	Birth	Wean	Year	Milk	SC	Wt.	Marb.	Ribeye	Fat
+6	+1.9	+74	+136	+21	+1.43	+59	+0.20	+0.79	+0.047
0.32	0.55	0.47	0.37	0.31	0.39	0.37	0.34	0.33	0.31

Dam Production: 5 BR 101,5 WR 102, 2 YR 99



### Big Dry Renew M26

**38** Tattoo: M26 DOB: 3/27/2024 Reg. No. 21187042

S A V Renown 3439  
**Sire:** S A V Renew 8132  
S A V Blackcap May 4593  
Connealy Confidence 0100  
**Dam:** BDAR Queen Mother 429B  
BDAR Queen Mother 255Z

BW Adj WW/Ratio  
76 651 / 105

S Values	
SM	102
SW	72
SF	89
SG	45
SB	133

Embryo Transplant. Heifer potential for larger heifer, but possibly better for 2's coming 3. We calved a flush sister this spring of this mating and she is a very nice 2 year-old. I feel the daughters will be very good out of this bull.

EPDs Acc					Cacass EPDs Acc				
CED	Birth	Wean	Year	Milk	SC	Wt.	Marb.	Ribeye	Fat
+8	+1.2	+62	+102	+29	+0.38	+48	+0.51	+0.66	+0.032
0.33	0.55	0.47	0.39	0.34	0.40	0.38	0.35	0.34	0.32

Dam Production: 9 BR 95,9 WR 101, 3 YR 102



### Big Dry McIntock M27

**39** Tattoo: M27 DOB: 3/28/2024 Reg. No. 21187043

S Thrive JAS 5515  
**Sire:** S McIntock 9702  
S Bessie 5544  
Sitz Conformation 689A  
**Dam:** BDAR-JDM Kate 17  
BDAR Kate 536C

BW Adj WW/Ratio  
90 626 / 101

S Values	
SM	27
SW	54
SF	121
SG	33
SB	154

A larger framed McIntock for your cows to produce those market topping feeder calves. Lot 39 is long with excellent depth of rib. Good bull.

EPDs Acc					Cacass EPDs Acc				
CED	Birth	Wean	Year	Milk	SC	Wt.	Marb.	Ribeye	Fat
+3	+1.7	+69	+136	+28	+1.68	+71	+0.27	+0.74	+0.049
0.31	0.54	0.46	0.36	0.30	0.37	0.35	0.32	0.31	0.29

Dam Production: 6 BR 109,6 WR 108, 2 YR 98



### Big Dry R & R M25

**37** Tattoo: M25 DOB: 3/27/2024 Reg. No. 21187041

S A V Renown 3439  
**Sire:** S A V Renew 8132  
S A V Blackcap May 4593  
Sitz Royal 9784  
**Dam:** BDAR Ruby 747E  
BDAR Ruby 406C

BW Adj WW/Ratio  
92 813 / 132

S Values	
SM	74
SW	72
SF	79
SG	49
SB	128

Pathfinder Dam who you will hear more from in the future as a member of our Donor team. R&R may stand for "Renew and Royal" or maybe "Rich and Rare" Extra length and body in this really good bull. Top weaning performance in this herd bull.

EPDs Acc					Cacass EPDs Acc				
CED	Birth	Wean	Year	Milk	SC	Wt.	Marb.	Ribeye	Fat
+3	+3.3	+83	+135	+24	+1.38	+53	+0.55	+0.89	+0.039
0.33	0.54	0.47	0.38	0.33	0.39	0.37	0.34	0.32	0.30

Dam Production: 6 BR 102,6 WR 109, 3 YR 106



### Big Dry Stellar M28

**40** Tattoo: M28 DOB: 3/28/2024 Reg. No. 21187044

Sitz Stellar 726D  
**Sire:** Sitz Stellar 7300  
Sitz Blackbird 3136  
S A V Rairdance 6848  
**Dam:** BDAR Pride 026H  
BDAR Pride 227Z

BW Adj WW/Ratio  
78 601 / 97

S Values	
SM	61
SW	53
SF	72
SG	45
SB	117

Heifer potential "PLUS". Lot 40 should work very well on heifers, not as much performance, but lots of calving ease to take the work out of your heifers.

EPDs Acc					Cacass EPDs Acc				
CED	Birth	Wean	Year	Milk	SC	Wt.	Marb.	Ribeye	Fat
+13	-2.7	+44	+90	+32	+1.24	+34	+0.64	+0.47	+0.084
0.31	0.53	0.45	0.35	0.28	0.37	0.35	0.31	0.30	0.28





### Big Dry K4 M29

**41** Tattoo: M29 DOB: 3/28/2024 Reg. No. 21187045

Sitz Intuition  
Sire: Big Dry Intuition K4  
BDAR Queen Mother 004H

S McLintock 9702  
Dam: BDAR Blackcap 232K  
BDAR Blackcap 225Z

BW Adj WW/Ratio  
66 649 / 112

S Values	
SM	94
SW	79
SF	79
SG	53
SB	131

Calved unassisted from a first calf heifer. Good, docile K4 son that is deep-bodied with a wide top. Grandam is a Pathfinder cow and this young cow weaned her 1st calf off with a 112 ratio. Potential Pathfinder in the making. Good heifer friendly bull

EPDs Acc					Cacass EPDs Acc				
CED	Birth	Wean	Year	Milk	SC	Wt.	Marb.	Ribeye	Fat
+12	-0.8	+65	+110	+29	+1.83	+44	+0.63	+0.84	+0.032
0.31	0.53	0.45	0.33	0.27	0.35	0.35	0.32	0.30	0.29



### Big Dry Stellar M31

**43** Tattoo: M31 DOB: 3/29/2024 Reg. No. 21187048

Sitz Stellar 726D  
Sire: Sitz Stellar 7300  
Sitz Blackbird 3136

Bruin Torque 5261  
Dam: BDAR Lass 017H  
Bdar Lass 353A

BW Adj WW/Ratio  
89 547 / 89

S Values	
SM	68
SW	55
SF	94
SG	35
SB	129

I am unsure why this bull ratioed where did, as I feel he's better than that. Dam is a nice Bruin Torque daughter that has done very well with her first2 calves and is due to calve again this spring. Might be worth a look.

EPDs Acc					Cacass EPDs Acc				
CED	Birth	Wean	Year	Milk	SC	Wt.	Marb.	Ribeye	Fat
+6	+0.1	+53	+97	+28	+0.75	+48	+0.49	+0.40	+0.114
0.32	0.54	0.46	0.36	0.30	0.39	0.37	0.33	0.32	0.30

Dam Production: 3 BR 107,3 WR 100, 1 YR 108



### Big Dry Renew M32

**44** Tattoo: M32 DOB: 3/29/2024 Reg. No. 21208613

S A V Renown 3439  
Sire: S A V Renew 8132  
S A V Blackcap May 4593

SydGen Big Medicine 1558  
Dam: BDAR Young Lucy 459B  
BDAR Young Lucy 933W

BW Adj WW/Ratio  
88 635 / 103

S Values	
SM	62
SW	62
SF	94
SG	25
SB	119

A heavy quartered son of Renew for the cowherd. Renew was my pick at Schaffs in 2019, but sold well above my budget. We are calving our first Renew daughters and they are very nice. This bull is thick and deep.

EPDs Acc					Cacass EPDs Acc				
CED	Birth	Wean	Year	Milk	SC	Wt.	Marb.	Ribeye	Fat
+0	+3.1	+73	+124	+23	+0.96	+53	+0.15	+0.53	+0.043
0.32	0.55	0.47	0.38	0.34	0.39	0.37	0.34	0.33	0.31

Dam Production: 8 BR 102,8 WR 102, 1 YR 119



Lot 42



### Big Dry Cool Hand Luke M30

**42** Tattoo: M30 DOB: 3/28/2024 Reg. No. 21187047

Connealy Cool 39L  
Sire: Big Dry Cool H21  
BDAR Queen Mother 345A

BDAR Appolo C3  
Dam: BDAR Queen Mother 714E  
BDAR Queen Mother 566C

BW Adj WW/Ratio  
88 681 / 110

S Values	
SM	72
SW	56
SF	88
SG	54
SB	142

One of the really good bulls in the offering, really long and thick, with lots of depth in a moderate framed package. Dam is a very nice daughter of Appolo, a past high selling Countdown son that Vermilion Ranch purchased in 2016. Potential herd bull.

EPDs Acc					Cacass EPDs Acc				
CED	Birth	Wean	Year	Milk	SC	Wt.	Marb.	Ribeye	Fat
+8	+0.6	+58	+98	+22	+0.01	+49	+0.76	+0.48	+0.048
0.31	0.53	0.45	0.34	0.29	0.35	0.35	0.32	0.30	0.29

Dam Production: 6 BR 103,6 WR 102, 2 YR 104



All bulls and heifers have been DNA parentage verified and genotyped. Preparing tissue samples to be submitted.



## Big Dry Stellar M35

**47**

Tattoo: M35

DOB: 3/30/2024

Reg. No. 21187051

Sitz Stellar 726D  
**Sire:** Sitz Stellar 7300  
 Sitz Blackbird 3136  
 SITZ Logo 12964  
**Dam:** BDAR Blackette 020H  
 BDAR Blackette 742E

BW 70 Adj WW/Ratio 580 / 94

S Values	
SM	48
SW	57
SF	99
SG	64
SB	163

Heifer friendly son of Stellar that also "targets the Brand" for CAB. If you buy this clean-made bull, your heifers will love you.

EPDs Acc						Cacass EPDs Acc			
CED	Birth	Wean	Year	Milk	SC	Wt.	Marb.	Ribeye	Fat
+12	-2.2	+63	+116	+26	+1.08	+52	+0.89	+0.72	+0.030
0.32	0.54	0.46	0.36	0.30	0.38	0.37	0.34	0.32	0.31



## Big Dry Mc Cool M33

**45**

Tattoo: M33

DOB: 3/29/2024

Reg. No. 21187049

S Thrive JAS 5515  
**Sire:** S McLintock 9702  
 S Bessie 5544

Connealy Cool 39L  
**Dam:** BDAR Queen Mother 521C  
 BDAR Queen Mother 317A

BW 87 Adj WW/Ratio 738 / 120

S Values	
SM	59
SW	71
SF	123
SG	38
SB	161

Pathfinder Dam. One of the top bulls of the sale. Big weaning out of the top weaning ratio daughter of Cool, who records 8@114. Mc Cool is extra deep and long. This is a herdbull

EPDs Acc						Cacass EPDs Acc			
CED	Birth	Wean	Year	Milk	SC	Wt.	Marb.	Ribeye	Fat
+7	+2.1	+79	+148	+31	+1.29	+83	+0.34	+0.81	+0.037
0.32	0.54	0.46	0.37	0.31	0.39	0.36	0.33	0.32	0.30

Dam Production: 8 BR 101,8 WR 114, 3 YR 109



## Big Dry McLintock M34

**46**

Tattoo: M34

DOB: 3/29/2024

Reg. No. 21187050

S Thrive JAS 5515  
**Sire:** S McLintock 9702  
 S Bessie 5544

Sitz Investmen 294B  
**Dam:** BDAR Blackcap 880F  
 BDAR Blackcap 225Z

BW 83 Adj WW/Ratio 628 / 102

S Values	
SM	55
SW	47
SF	85
SG	27
SB	112

Good McLintock son that exhibits extra length. His dam has 5 calves average weaning ratio of 101, all have been bulls and good enough to make the sale. Certainly, 1 of the good bulls we are offering, would work well on young cows and plan to keep the daughters

EPDs Acc						Cacass EPDs Acc			
CED	Birth	Wean	Year	Milk	SC	Wt.	Marb.	Ribeye	Fat
+9	+0.6	+56	+106	+19	+1.32	+44	+0.39	+0.03	+0.096
0.30	0.53	0.45	0.35	0.29	0.37	0.35	0.31	0.30	0.28

Dam Production: 5 BR 100,5 WR 101, 2 YR 91



## Big Dry McLintock M36

**48**

Tattoo: M36

DOB: 3/30/2024

Reg. No. 21187052

S Thrive JAS 5515  
**Sire:** S McLintock 9702  
 S Bessie 5544

BDAR-JDM Ratify D1  
**Dam:** BDAR Portlethen Lucy 818F  
 BDAR Portlethen Lucy 035X

BW 82 Adj WW/Ratio 625 / 101

S Values	
SM	50
SW	66
SF	102
SG	38
SB	140

A well-muscled, extra long McLintock son that will add pounds to your calf crop. Rib eye EPD in the top 10% of the breed. This is a good bull.

EPDs Acc						Cacass EPDs Acc			
CED	Birth	Wean	Year	Milk	SC	Wt.	Marb.	Ribeye	Fat
+3	+1.1	+70	+133	+32	+0.85	+65	+0.19	+1.14	-0.002
0.30	0.53	0.46	0.35	0.29	0.37	0.35	0.31	0.30	0.28



### Big Dry McIntock M37

**49** Tattoo: M37 DOB: 3/30/2024 Reg. No. 21187053

S Thrive JAS 5515  
**Sire:** S McIntock 9702  
S Bessie 5544  
Connealy Confidence 0100  
**Dam:** BDAR Blackbird 439B  
BDAR Blackbird 264Z

BW Adj WW/Ratio  
79 615 / 99

S Values	
SM	57
SW	60
SF	83
SG	37
SB	120

Heifer potential in this McIntock embryo bull. Extra length and structurally correct. The opportunity is to purchase several full brothers by McIntock and 439B. 439B has been a very consistent producer of good calves. She is due to have her 9th calf this spring.

EPDs Acc					Cacass EPDs Acc				
CED	Birth	Wean	Year	Milk	SC	Wt.	Marb.	Ribeye	Fat
+7	+1.0	+66	+122	+25	+0.92	+47	+0.27	+0.72	-0.007
0.32	0.55	0.48	0.37	0.32	0.39	0.38	0.35	0.33	0.32



### Big Dry Stellar M39

**51** Tattoo: M39 DOB: 3/31/2024 Reg. No. 21187054

Sitz Stellar 726D  
**Sire:** Sitz Stellar 7300  
Sitz Blackbird 3136  
Bruin Torque 5261  
**Dam:** BDAR Tulloch Duch 060H  
BDAR Tulloch Duch 601D

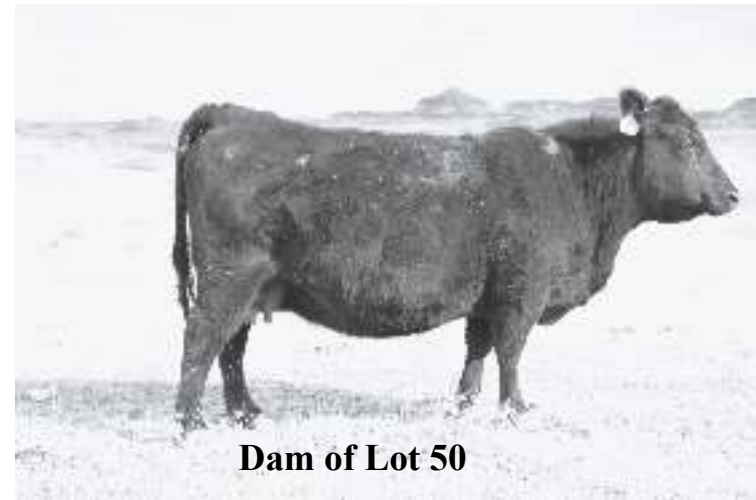
BW Adj WW/Ratio  
80 576 / 93

S Values	
SM	37
SW	54
SF	103
SG	52
SB	155

A long and smooth Stellar son. We are really happy with the Stellar daughters.

EPDs Acc					Cacass EPDs Acc				
CED	Birth	Wean	Year	Milk	SC	Wt.	Marb.	Ribeye	Fat
+2	-0.1	+59	+118	+30	+0.60	+53	+0.61	+0.83	+0.026
0.31	0.53	0.45	0.35	0.29	0.37	0.35	0.32	0.30	0.29

Dam Production: 3 BR 92,3 WR 89, 1 YR 111



**Dam of Lot 50**



### Big Dry McIntock M40

**52** Tattoo: M40 DOB: 3/31/2024 Reg. No. 21187056

S Thrive JAS 5515  
**Sire:** S McIntock 9702  
S Bessie 5544  
SydGen Black Velvet 4423  
**Dam:** BDAR Eldorene 738E  
BDAR Eldorene 158Y

BW Adj WW/Ratio  
82 571 / 93

S Values	
SM	59
SW	61
SF	98
SG	37
SB	135

Extra length and frame on this big son of McIntock.

EPDs Acc					Cacass EPDs Acc				
CED	Birth	Wean	Year	Milk	SC	Wt.	Marb.	Ribeye	Fat
+7	+1.8	+73	+139	+22	+0.72	+60	+0.46	+0.39	+0.062
0.30	0.53	0.46	0.35	0.30	0.37	0.35	0.32	0.30	0.29

Dam Production: 6 BR 105,6 WR 101, 2 YR 102



### Big Dry Makoshika M38

**50** Tattoo: M38 DOB: 3/30/2024 Reg. No. 21208622

Ellingson Rider Pride 7282  
**Sire:** Ellingson Badlands 0285  
EA Bells Girl 7617  
BDAR-JDM Ratify D1  
**Dam:** JDM Madame Pride 835F  
S A V Madame Pride 6212

BW Adj WW/Ratio  
90 590 / 95

S Values	
SM	90
SW	64
SF	108
SG	36
SB	144

Pathfinder Dam. This eye appealing, thick, big-straight topped, good footed bull will catch your eye. Potential Herdbull

EPDs Acc					Cacass EPDs Acc				
CED	Birth	Wean	Year	Milk	SC	Wt.	Marb.	Ribeye	Fat
+4	+3.6	+68	+113	+26	+1.11	+56	+0.15	+1.22	+0.003
0.33	0.53	0.46	0.36	0.30	0.38	0.35	0.32	0.31	0.29

Dam Production: 5 BR 105,5 WR 107, 1 YR 109



### Big Dry K4 M41

**53** Tattoo: M41 DOB: 3/31/2024 Reg. No. 21187057

Sitz Intuition  
**Sire:** Big Dry Intuition K4  
BDAR Queen Mother 004H  
Sitz Intuition  
**Dam:** BDAR Blackette 203K  
BDAR Blackette 003H

BW Adj WW/Ratio  
82 629 / 108

S Values	
SM	84
SW	78
SF	93
SG	63
SB	157

Calved unassisted from a first calf heifer. Excellent weaning on this well muscled son of K4.

EPDs Acc					Cacass EPDs Acc				
CED	Birth	Wean	Year	Milk	SC	Wt.	Marb.	Ribeye	Fat
+6	+2.0	+82	+135	+22	+1.36	+56	+0.97	+0.38	+0.035
0.27	0.47	0.39	0.27	0.20	0.27	0.29	0.25	0.24	0.23



### Big Dry Stellar M42

**54** Tattoo: M42 DOB: 4/1/2024 Reg. No. 21187058

Sitz Stellar 726D  
Sire: Sitz Stellar 7300  
Sitz Blackbird 3136

S A V Specialist 8896  
Dam: BDAR Blackette 045H  
BDAR Blackette 420B

BW Adj WW/Ratio  
78 583 / 94

S Values	
SM	81
SW	50
SF	101
SG	47
SB	147

Pathfinder Dam. Long and complete, good bull.  
Specialist daughters are certainly making nice cows on  
the Big Dry. Fertile, easy to handle and nice uddered.

EPDs Acc					Cacass EPDs Acc				
CED	Birth	Wean	Year	Milk	SC	Wt.	Marb.	Ribeye	Fat
+8	-1.0	+51	+95	+23	+0.97	+49	+0.63	+0.66	+0.088
0.31	0.54	0.46	0.36	0.29	0.38	0.36	0.33	0.31	0.30



### Big Dry McLin M45

**57** Tattoo: M45 DOB: 4/1/2024 Reg. No. 21187061

S McLintock 9702  
Sire: Big Dry Big McLin K12  
BDAR Ruby 805F

Sitz Royal 9784  
Dam: BDAR Lass 826F  
BDAR Lass 514C

BW Adj WW/Ratio  
76 696 / 113

S Values	
SM	77
SW	73
SF	72
SG	40
SB	113

Now, here's a heifer bull with chart topping weaning  
performance. He's thick with a moderate frame. Good  
bull

EPDs Acc					Cacass EPDs Acc				
CED	Birth	Wean	Year	Milk	SC	Wt.	Marb.	Ribeye	Fat
+19	-3.0	+62	+112	+28	+1.05	+44	+0.37	+0.74	+0.017
0.29	0.51	0.43	0.31	0.26	0.32	0.33	0.29	0.27	0.26

Dam Production: 5 BR 99.5 WR 109, 1 YR 107



### Big Dry K4 M43

**55** Tattoo: M43 DOB: 4/1/2024 Reg. No. 21187059

Sitz Intuition  
Sire: Big Dry Intuition K4  
BDAR Queen Mother 004H

SydGen Blueprint  
Dam: BDAR-JDM Zara 207K  
BDAR Zara 007H

BW Adj WW/Ratio  
84 636 / 109

S Values	
SM	88
SW	71
SF	102
SG	47
SB	149

Calved unassisted from a first calf heifer. Excellent  
weaning on this well-muscled, good hipped K4 son. In  
addition, he scores a \$M in the top 10% of the breed.  
Also, he can graze the ridge tops with a PAP EPD in the  
top 10%

EPDs Acc					Cacass EPDs Acc				
CED	Birth	Wean	Year	Milk	SC	Wt.	Marb.	Ribeye	Fat
+3	+3.2	+82	+132	+16	+0.62	+62	+0.58	+0.62	+0.041
0.32	0.53	0.44	0.33	0.27	0.34	0.35	0.32	0.30	0.29



### Big Dry Bronc M46

**58** Tattoo: M46 DOB: 4/2/2024 Reg. No. 21187062

2XL Bronc 8153  
Sire: Diamond Bronc H107  
Diamond Trojan Erica 0824

Sitz Resilient 10208  
Dam: BDAR Queen Mother 108J  
BDAR Queen Mother 914G

BW Adj WW/Ratio  
81 638 / 103

S Values	
SM	77
SW	70
SF	89
SG	60
SB	149

This good bull checks all the boxes from birth to weaning  
to carcass. Herd bull potential in this good Bronc son.  
Dam lost her first calf to pneumonia last summer during  
July heat.

EPDs Acc					Cacass EPDs Acc				
CED	Birth	Wean	Year	Milk	SC	Wt.	Marb.	Ribeye	Fat
+10	-1.3	+71	+135	+25	+0.85	+47	+0.77	+0.80	+0.021
0.33	0.54	0.46	0.36	0.29	0.38	0.36	0.33	0.32	0.30



### Big Dry Blueprint M44

**56** Tattoo: M44 DOB: 4/1/2024 Reg. No. 21187060

KM Broken Bow 002  
Sire: SydGen Blueprint  
Sitz Florabelle Fanny 4735

Soo Line Alternative 9127W  
Dam: OCC Lucy 258  
OCC Lucy 620

BW Adj WW/Ratio  
85 568 / 91

S Values	
SM	80
SW	62
SF	85
SG	29
SB	114

Embryo Transplant. Dam was purchased by John at the  
NILE, 258 produced here until she was 11. This  
clean-made, smooth-shouldered Blueprint son has a  
head that your heifers will love.

EPDs Acc					Cacass EPDs Acc				
CED	Birth	Wean	Year	Milk	SC	Wt.	Marb.	Ribeye	Fat
+10	+0.5	+52	+95	+37	+1.15	+46	+0.09	+0.78	-0.013
0.32	0.53	0.46	0.37	0.33	0.39	0.36	0.33	0.32	0.29

Dam Production: 10 BR 95,10 WR 103, 5 YR 99



### Big Dry Coalition M47

**59** Tattoo: M47 DOB: 4/2/2024 Reg. No. 21187063

U-2 Coalition 206C  
Sire: S Coalition 270  
S Blossom 0278

SydGen Escalate 9017  
Dam: BDAR Lass 291K  
BDAR Lass 912G

BW Adj WW/Ratio  
74 598 / 103

S Values	
SM	77
SW	50
SF	70
SG	41
SB	112

Calved unassisted from a first calf heifer. Heifer  
potential for larger heifers. We have used Coalition for 2  
years on heifers with very good results.

EPDs Acc					Cacass EPDs Acc				
CED	Birth	Wean	Year	Milk	SC	Wt.	Marb.	Ribeye	Fat
+5	+1.5	+48	+93	+31	+1.04	+29	+0.46	+0.53	+0.025
0.30	0.52	0.43	0.32	0.27	0.35	0.34	0.31	0.29	0.28



### Big Dry McIntock M48

**60** Tattoo: M48 DOB: 4/2/2024 Reg. No. 21187064

S Thrive JAS 5515  
**Sire:** S McIntock 9702  
S Bessie 5544  
S A V Rainfall 6846  
**Dam:** BDAR Blackette 921G  
BDAR Blackette 261Z

BW Adj WW/Ratio  
84 606 / 98

S Values	
SM	61
SW	57
SF	105
SG	24
SB	130

Heifer potential on a very complete McIntock son. Lot 60 is long with a good top.

EPDs Acc					Carcass EPDs Acc				
CED	Birth	Wean	Year	Milk	SC	Wt.	Marb.	Ribeye	Fat
+9	-0.4	+64	+119	+19	+0.47	+54	+0.15	+0.66	+0.078
0.33	0.56	0.48	0.38	0.32	0.40	0.38	0.35	0.34	0.32

Dam Production: 4 BR 101,4 WR 101, 1 YR 91



### Big Dry Bronc M49

**61** Tattoo: M49 DOB: 4/3/2024 Reg. No. 21187065

2XL Bronc 8153  
**Sire:** Diamond Bronc H107  
Diamond Trojan Erica 0824  
Tehama Tahoe B767  
**Dam:** BDAR Queen Mother 109J  
BDAR Queen Mother 908G

BW Adj WW/Ratio  
90 686 / 111

S Values	
SM	76
SW	83
SF	99
SG	60
SB	159

High performing Bronc son, that balances growth and carcass traits. He "targets the Brand" for CAB, as well as being a good bull.

EPDs Acc					Carcass EPDs Acc				
CED	Birth	Wean	Year	Milk	SC	Wt.	Marb.	Ribeye	Fat
+4	+2.0	+80	+130	+28	+0.18	+57	+0.88	+0.64	+0.059
0.34	0.55	0.47	0.36	0.30	0.39	0.37	0.34	0.33	0.31



### Big Dry Tahoe M50

**62** Tattoo: M50 DOB: 4/3/2024 Reg. No. 21187066

Tehama Upward Y238  
**Sire:** Tehama Tahoe B767  
Tehama Mary Blackbird Y684  
S A V Mustang 9134  
**Dam:** BDAR Pride 227Z  
Vermilion Pride 7050

BW Adj WW/Ratio  
82 603 / 97

S Values	
SM	80
SW	68
SF	68
SG	55
SB	123

Pathfinder Dam and Sire. Good ET son of Tahoe that will leave excellent feeder calves and beautiful daughters. A son of 227Z purchased by Andee Peterson Laverdure, Cut Bank, becoming a "Foundation" sire for her herd. Good bull

EPDs Acc					Carcass EPDs Acc				
CED	Birth	Wean	Year	Milk	SC	Wt.	Marb.	Ribeye	Fat
+7	+0.5	+59	+101	+30	+0.23	+28	+0.75	+0.45	+0.019
0.35	0.55	0.47	0.39	0.36	0.41	0.40	0.38	0.36	0.35

Dam Production: 10 BR 103,10 WR 105, 4 YR 105



### Big Dry Stellar M51

**63** Tattoo: M51 DOB: 4/4/2024 Reg. No. 21187067

Sitz Stellar 726D  
**Sire:** Sitz Stellar 7300  
Sitz Blackbird 3136  
Tehama Tahoe B767  
**Dam:** BDAR Blackette 003H  
BDAR Blackette 809F

BW Adj WW/Ratio  
86 641 / 104

S Values	
SM	74
SW	67
SF	103
SG	43
SB	147

Pathfinder dam. One of the top bulls today, really good Stellar son out of a very good daughter of Tahoe. Lot 63 is good from end to end. Daughters will make future calf crops shine. Good bull

EPDs Acc					Carcass EPDs Acc				
CED	Birth	Wean	Year	Milk	SC	Wt.	Marb.	Ribeye	Fat
+6	+1.1	+74	+125	+21	+1.63	+53	+0.51	+0.82	+0.079
0.33	0.55	0.46	0.36	0.30	0.39	0.37	0.34	0.32	0.31

Dam Production: 3 BR 106,3 WR 108, 1 YR 103



### Big Dry Stellar M52

**64** Tattoo: M52 DOB: 4/5/2024 Reg. No. 21187068

Sitz Stellar 726D  
**Sire:** Sitz Stellar 7300  
Sitz Blackbird 3136  
Bruin Torque 5261  
**Dam:** BDAR Young Lucy 032H  
BDAR Young Lucy 459B

BW Adj WW/Ratio  
90 617 / 100

S Values	
SM	42
SW	45
SF	138
SG	53
SB	191

Good Stellar for young cows. Dam is a maternal brother to Lot 44 in this sale. Strong maternal line of sustainable-long term cows. The challenges of drought, grasshoppers and stable flies on our cowherds, gives us greater appreciation of the cow lines

EPDs Acc					Carcass EPDs Acc				
CED	Birth	Wean	Year	Milk	SC	Wt.	Marb.	Ribeye	Fat
+6	+0.2	+60	+120	+23	+0.76	+71	+0.64	+0.79	+0.029
0.31	0.54	0.46	0.35	0.29	0.37	0.36	0.32	0.31	0.29



Hillari with her Ruger American Rancher 223 that I bought for her...for my birthday. Hillari works year round controlling predators on the ranch, saving many lambs and calves.



### Big Dry Stellar M53

**65** Tattoo: M53 DOB: 4/5/2024 Reg. No. 21187069

Sitz Stellar 726D  
Sire: Sitz Stellar 7300  
Sitz Blackbird 3136

Coleman Bravo 6313  
Dam: BDAR Queen Mother 048H  
BDAR Queen Mother 657D

BW Adj WW/Ratio  
82 643 / 104

S Values	
SM	70
SW	57
SF	92
SG	27
SB	119

Heifer potential on this Stellar. We used Stellar on our first-calvers with very good success. Calves show lots of vigor.

EPDs Acc					Cacass EPDs Acc				
CED	Birth	Wean	Year	Milk	SC	Wt.	Marb.	Ribeye	Fat
+9	+0.1	+54	+99	+29	+1.21	+53	+0.32	+0.43	+0.118
0.33	0.55	0.47	0.37	0.30	0.39	0.37	0.34	0.32	0.31



### Big Dry Stellar M57

**68** Tattoo: M57 DOB: 4/8/2024 Reg. No. 21187073

Sitz Stellar 726D  
Sire: Sitz Stellar 7300  
Sitz Blackbird 3136

S A V Raindance 6848  
Dam: BDAR Ruby 034H  
BDAR Ruby 019X

BW Adj WW/Ratio  
86 561 / 91

S Values	
SM	62
SW	45
SF	75
SG	45
SB	120

A Stellar from a good cow family that originated from Bill and Barb Rishel's B/R Angus in Nebraska. This bull will work well on young cows.

EPDs Acc					Cacass EPDs Acc				
CED	Birth	Wean	Year	Milk	SC	Wt.	Marb.	Ribeye	Fat
+4	+1.5	+55	+110	+24	+1.03	+35	+0.53	+0.45	+0.010
0.32	0.55	0.47	0.37	0.30	0.39	0.37	0.34	0.32	0.31



### Big Dry McLintock M54

**66** Tattoo: M54 DOB: 4/5/2024 Reg. No. 21187070

S Thrive JAS 5515  
Sire: S McLintock 9702  
S Bessie 5544

Connealy Confidence 0100  
Dam: BDAR Blackbird 439B  
BDAR Blackbird 264Z

BW Adj WW/Ratio  
87 607 / 98

S Values	
SM	46
SW	44
SF	102
SG	43
SB	145

Embryo Transplant. Another member of the 439B/McLintock tribe. We flushed 439B because of her longevity and quality of her calves. There are 4 flush brothers in the catalog, plus 5 daughters in our replacements and more calves being born this spring.

EPDs Acc					Cacass EPDs Acc				
CED	Birth	Wean	Year	Milk	SC	Wt.	Marb.	Ribeye	Fat
+11	+1.7	+63	+118	+15	+0.55	+52	+0.45	+0.66	+0.019
0.30	0.54	0.46	0.36	0.31	0.37	0.36	0.33	0.31	0.30



### Big Dry McLin M58

**69** Tattoo: M58 DOB: 4/8/2024 Reg. No. 21187074

S McLintock 9702  
Sire: Big Dry Big McLin K12  
BDAR Ruby 805F

Connealy Confidence 0100  
Dam: BDAR Blackbird 439B  
BDAR Blackbird 264Z

BW Adj WW/Ratio  
79 647 / 105

S Values	
SM	64
SW	69
SF	111
SG	44
SB	154

439B's Natural calf and maternal brother to Lots 18, 19, 49, 54. Big McLin is the son we retained to replace McLintock, and what a job he is doing. Good bull.

EPDs Acc					Cacass EPDs Acc				
CED	Birth	Wean	Year	Milk	SC	Wt.	Marb.	Ribeye	Fat
+6	+1.3	+75	+131	+25	+0.42	+71	+0.44	+0.81	+0.025
0.31	0.54	0.46	0.33	0.29	0.35	0.35	0.32	0.30	0.29



### Big Dry Cool H82 M56

**67** Tattoo: M56 DOB: 4/7/2024 Reg. No. 21187072

Connealy Cool 39L  
Sire: Big Dry Cool H82  
BDAR E T Duchess 538C

S A V Rainfall 6846  
Dam: BDAR-BFM Reba 114J  
JLF Reba 1212

BW Adj WW/Ratio  
80 571 / 93

S Values	
SM	67
SW	69
SF	93
SG	52
SB	145

Heifer potential on this good H82 son. Outstanding depth and thickness.

EPDs Acc					Cacass EPDs Acc				
CED	Birth	Wean	Year	Milk	SC	Wt.	Marb.	Ribeye	Fat
+12	+0.5	+76	+141	+22	+1.32	+53	+0.64	+0.73	+0.033
0.32	0.54	0.46	0.35	0.30	0.37	0.37	0.34	0.33	0.31

John and Ben trimmed all the cattle for the sale, this may be their least favorite part of raising registered Angus.





### Big Dry Cool H82 M59

**70** Tattoo: M59 DOB: 4/9/2024 Reg. No. 21187075

Sire: Connealy Cool 39L  
Big Dry Cool H82  
BDAR E T Duchess 538C

Dam: SydGen Black Velvet 4423  
BDAR-JDM Madame Pride 073H  
S A V Madame Pride 6212

BW 92 Adj WW/Ratio 668 / 108

S Values	
SM	55
SW	56
SF	84
SG	33
SB	116

Big weaning on this H82 son, whose dam is from one of the breeds most recognized and respected cow families, Madame Pride. 6212 is a known daughter of the 3145 cow, who has sold over \$1 million in progeny.

EPDs Acc					Cacass EPDs Acc				
CED	Birth	Wean	Year	Milk	SC	Wt.	Marb.	Ribeye	Fat
-1	+5.7	+77	+130	+23	+0.46	+48	+0.20	+0.58	-0.019
0.31	0.54	0.45	0.34	0.29	0.36	0.36	0.32	0.31	0.29



### Big Dry Cool H21 M63

**73** Tattoo: M63 DOB: 4/11/2024 Reg. No. 21187079

Sire: Connealy Cool 39L  
Big Dry Cool H21  
BDAR Queen Mother 345A

Dam: S A V Rainfall 6846  
BDAR Ester Tulloch Duch 955G  
BDAR Ester Tulloch Duch 049X

BW 84 Adj WW/Ratio 563 / 95

S Values	
SM	67
SW	54
SF	96
SG	42
SB	138

An extra long son of H21, I like this bull, has some meat combined with length.

EPDs Acc					Cacass EPDs Acc				
CED	Birth	Wean	Year	Milk	SC	Wt.	Marb.	Ribeye	Fat
+3	+2.3	+65	+108	+17	+1.72	+54	+0.46	+0.54	+0.016
0.31	0.53	0.45	0.33	0.29	0.35	0.36	0.32	0.31	0.29

Dam Production: 4 BR 100,4 WR 93, 1 YR 98



### Big Dry Cool H82 M61

**71** Tattoo: M61 DOB: 4/9/2024 Reg. No. 21187077

Sire: Connealy Cool 39L  
Big Dry Cool H82  
BDAR E T Duchess 538C

Dam: S Jump Start 923  
BDAR Lass 147J  
BDAR Lass 923W

BW 85 Adj WW/Ratio 596 / 97

S Values	
SM	75
SW	65
SF	75
SG	50
SB	125

An H82 that will work well on your cowherd. Grandam produced several replacements that are doing well.

EPDs Acc					Cacass EPDs Acc				
CED	Birth	Wean	Year	Milk	SC	Wt.	Marb.	Ribeye	Fat
+9	+1.9	+67	+108	+20		+37	+0.65	+0.64	+0.047
0.30	0.52	0.44	0.32	0.27	0.34	0.34	0.31	0.29	0.27

Dam Production: 2 BR 102,2 WR 102, 1 YR 105



### Big Dry Stellar M64

**74** Tattoo: M64 DOB: 4/12/2024 Reg. No. 21187080

Sire: Sitz Stellar 726D  
Sitz Stellar 7300  
Sitz Blackbird 3136

Dam: Coleman Bravo 6313  
BDAR Queen Mother 016H  
BDAR Queen Mother 015X

BW 84 Adj WW/Ratio 586 / 95

S Values	
SM	71
SW	66
SF	85
SG	42
SB	127

With Stellar and Bravo lined up in Lot 74's pedigree, I feel comfortable in saying he is Heifer Friendly.

EPDs Acc					Cacass EPDs Acc				
CED	Birth	Wean	Year	Milk	SC	Wt.	Marb.	Ribeye	Fat
+10	-0.9	+59	+104	+32	+1.32	+42	+0.52	+0.63	+0.069
0.31	0.53	0.46	0.35	0.29	0.37	0.36	0.32	0.31	0.29



### Big Dry Stellar M62

**72** Tattoo: M62 DOB: 4/11/2024 Reg. No. 21187078

Sire: Sitz Stellar 726D  
Sitz Stellar 7300  
Sitz Blackbird 3136

Dam: S A V Specialist 8896  
BDAR Zara 039H  
BDAR Zara 202Z

BW 90 Adj WW/Ratio 615 / 104

S Values	
SM	69
SW	64
SF	96
SG	48
SB	144

Pathfinder Dam. Certainly one of the good Stellar 7300 son's and one of the better bulls in the entire offering. Stellar 7300 daughters are having thier first calves this spring and what nice cows they are. They're naturally maternal with very nice udders.

EPDs Acc					Cacass EPDs Acc				
CED	Birth	Wean	Year	Milk	SC	Wt.	Marb.	Ribeye	Fat
+3	+2.5	+66	+125	+32	+1.31	+55	+0.60	+0.69	+0.057
0.32	0.55	0.47	0.37	0.30	0.40	0.37	0.34	0.33	0.31

Dam Production: 3 BR 105,3 WR 106, 1 YR 98



### Big Dry Cool H82 M65

**75** Tattoo: M65 DOB: 4/12/2024 Reg. No. 21187081

Sire: Connealy Cool 39L  
Big Dry Cool H82  
BDAR E T Duchess 538C

Dam: S Jump Start 923  
BDAR-BFM Lass 150J  
BDAR Lass 882F

BW 87 Adj WW/Ratio 533 / 90

S Values	
SM	62
SW	62
SF	85
SG	33
SB	118

A moderate-framed, long sided H82 son that will work well on your cowherd.

EPDs Acc					Cacass EPDs Acc				
CED	Birth	Wean	Year	Milk	SC	Wt.	Marb.	Ribeye	Fat
+5	+3.4	+71	+117	+25	+1.59	+47	+0.30	+0.71	+0.060
0.32	0.55	0.46	0.35	0.29	0.37	0.37	0.34	0.32	0.30

Dam Production: 2 BR 106,2 WR 100, 1 YR 106



### Big Dry Cool H82 M66

**76** Tattoo: M66 DOB: 4/12/2024 Reg. No. 21187082

Sire: Connealy Cool 39L  
Big Dry Cool H82  
BDAR E T Duchess 538C

Dam: BDAR-JDM Ratify D1  
BDAR-BFM Queen 960G  
JLF Queen of Paintrock 5113

BW 92 Adj WW/Ratio 560 / 94

S Values	
SM	71
SW	53
SF	68
SG	26
SB	94

Good stock bull. Granddam is still producing at 10 on the Big Dry. This docile bull will sire daughters with a super udder and fertility.

EPDs Acc					Cacass EPDs Acc				
CED	Birth	Wean	Year	Milk	SC	Wt.	Marb.	Ribeye	Fat
+6	+3.1	+60	+104	+21	+0.08	+32	+0.13	+0.72	+0.052
0.30	0.53	0.45	0.33	0.28	0.35	0.35	0.31	0.30	0.28

Dam Production: 4 BR 100,4 WR 100, 1 YR 104



### Big Dry Stellar M67

**77** Tattoo: M67 DOB: 4/13/2024 Reg. No. 21187083

Sire: Sitz Stellar 726D  
Sitz Stellar 7300  
Sitz Blackbird 3136

Dam: S A V Raindance 6848  
BDAR-BFM Reba 031H  
JLF Reba 2211

BW 82 Adj WW/Ratio 620 / 105

S Values	
SM	61
SW	71
SF	95
SG	30
SB	124

Heifer friendly with performance. Ben bought the Granddam from Jenna Wagner at the NILE in Billings.

EPDs Acc					Cacass EPDs Acc				
CED	Birth	Wean	Year	Milk	SC	Wt.	Marb.	Ribeye	Fat
+9	-1.0	+66	+125	+35	+1.58	+54	+0.34	+0.21	+0.054
0.33	0.55	0.47	0.37	0.31	0.39	0.37	0.34	0.33	0.31



### Big Dry McLin M68

**78** Tattoo: M68 DOB: 4/13/2024 Reg. No. 21187084

Sire: S McLintock 9702  
Big Dry Big McLin K12  
BDAR Ruby 805F

Dam: Diamond in the Rough  
Diamond Nola 3592  
Diamond Nola 656R

BW 67 Adj WW/Ratio 532 / 90

S Values	
SM	69
SW	56
SF	76
SG	26
SB	102

Heifer potential with thickness. Dam has been a solid producing cow.

EPDs Acc					Cacass EPDs Acc				
CED	Birth	Wean	Year	Milk	SC	Wt.	Marb.	Ribeye	Fat
+11	-1.3	+58	+105	+19	+0.20	+39	+0.21	+0.42	+0.062
0.31	0.54	0.46	0.34	0.30	0.35	0.36	0.32	0.31	0.29

Dam Production: 8 BR 100,8 WR 100, 1 YR 90



### Big Dry Bronc M70

**79** Tattoo: M70 DOB: 4/13/2024 Reg. No. 21187087

Sire: 2XL Bronc 8153  
Diamond Bronc H107  
Diamond Trojan Erica 0824

Dam: S A V Rainfall 6846  
BDAR Queen Mother 846F  
BDAR Queen Mother 904W

BW 77 Adj WW/Ratio 616 / 104

S Values	
SM	59
SW	71
SF	98
SG	70
SB	169

Lot 79 is a really good son of Bronc, extra long, soft-made and complete. Rationing well at weaning, Lot 79 has heifer potential. Daughters will work in our country and the steer mates will find their way to white tablecloth, as he "Targets the Brand"

EPDs Acc					Cacass EPDs Acc				
CED	Birth	Wean	Year	Milk	SC	Wt.	Marb.	Ribeye	Fat
+13	-1.4	+71	+132	+26	+0.68	+58	+1.09	+0.51	+0.039
0.33	0.55	0.47	0.37	0.31	0.39	0.37	0.34	0.32	0.31

Dam Production: 4 BR 99,4 WR 104, 2 YR 111



### Big Dry McLin M71

**80** Tattoo: M71 DOB: 4/14/2024 Reg. No. 21187088

Sire: S McLintock 9702  
Big Dry Big McLin K12  
BDAR Ruby 805F

Dam: SydGen Black Velvet 4423  
BDAR Queen Mother 872F  
BDAR Queen Mother 408B

BW 82 Adj WW/Ratio 656 / 111

S Values	
SM	57
SW	65
SF	97
SG	40
SB	138

A strong maternal line back this high performance Big McLin son. Lot 80 could work on larger heifers. Good bull

EPDs Acc					Cacass EPDs Acc				
CED	Birth	Wean	Year	Milk	SC	Wt.	Marb.	Ribeye	Fat
+6	+0.7	+73	+141	+26	+1.01	+59	+0.54	+0.38	+0.069
0.29	0.52	0.44	0.32	0.27	0.33	0.34	0.30	0.29	0.27







### Big Dry Cool H82 M72

**81** Tattoo: M72 DOB: 4/15/2024 Reg. No. 21187089

Sire: Connealy Cool 39L  
Big Dry Cool H82  
BDAR E T Duchess 538C

Dam: Tehama Tahoe B767  
BDAR Zara 007H  
BDAR Zara 874C

BW Adj WW/Ratio  
87 598 / 101

S Values	
SM	84
SW	71
SF	92
SG	61
SB	152

Solid performance from birth to weaning to yearling on this H82 son.

EPDs Acc					Cacass EPDs Acc				
CED	Birth	Wean	Year	Milk	SC	Wt.	Marb.	Ribeye	Fat
-3	+5.0	+77	+121	+27	+1.30	+56	+0.69	+1.03	-0.005
0.33	0.55	0.46	0.35	0.30	0.37	0.38	0.34	0.33	0.31



### Big Dry Specialist M75

**84** Tattoo: M75 DOB: 4/16/2024 Reg. No. 21187092

Sire: S A V Sensation 5615  
S A V Specialist 8896  
S A V Madame Pride 3304

Dam: SydGen Black Velvet 4423  
BDAR Jane 860F  
BDAR Jane 450B

BW Adj WW/Ratio  
90 563 / 95

S Values	
SM	30
SW	36
SF	98
SG	38
SB	137

Deep and long describe this son of Specialist.

EPDs Acc					Cacass EPDs Acc				
CED	Birth	Wean	Year	Milk	SC	Wt.	Marb.	Ribeye	Fat
+5	+2.1	+56	+105	+14	+0.77	+46	+0.32	+0.65	-0.002
0.33	0.56	0.48	0.37	0.33	0.39	0.38	0.34	0.33	0.31



### Big Dry Cool H21 M73

**82** Tattoo: M73 DOB: 4/15/2024 Reg. No. 21187090

Sire: Connealy Cool 39L  
Big Dry Cool H21  
BDAR Queen Mother 345A

Dam: S Diligent 5548  
S Burgett 9812  
S Burgett 6992

BW Adj WW/Ratio  
89 740 / 125

S Values	
SM	63
SW	76
SF	86
SG	42
SB	127

Super weaning on this masculine H21 son ready to go to work on the cowherd. Weaning weight EPD in the top 5% of the breed.

EPDs Acc					Cacass EPDs Acc				
CED	Birth	Wean	Year	Milk	SC	Wt.	Marb.	Ribeye	Fat
+1	+4.3	+89	+139	+22	+0.38	+58	+0.46	+0.45	+0.010
0.31	0.53	0.45	0.34	0.29	0.35	0.36	0.32	0.31	0.29



### Big Dry Specialist M74

**83** Tattoo: M74 DOB: 4/16/2024 Reg. No. 21187091

Sire: S A V Sensation 5615  
S A V Specialist 8896  
S A V Madame Pride 3304

Dam: Connealy Cool 39L  
BDAR Lass 402C  
BDAR Lass 220Z

BW Adj WW/Ratio  
91 634 / 107

S Values	
SM	65
SW	42
SF	76
SG	33
SB	109

EPD's indicate heifer bull, but birthweight says better for cows. Good bull, soft made with a strong topline. Excellent weaning ratio. Specialist daughters are really nice cows, excellent fertility, quiet demeanor, and superb udder structure.

EPDs Acc					Cacass EPDs Acc				
CED	Birth	Wean	Year	Milk	SC	Wt.	Marb.	Ribeye	Fat
+10	+0.5	+51	+91	+16	+1.53	+34	+0.23	+0.55	-0.001
0.32	0.54	0.47	0.37	0.32	0.39	0.37	0.34	0.32	0.31

Dam Production: 6 BR 101,6 WR 101, 2 YR 105



### Big Dry Coalition M76

**85** Tattoo: M76 DOB: 4/17/2024 Reg. No. 21187093

Sire: U-2 Coalition 206C  
S Coalition 270  
S Blossom 0278

Dam: S Jump Start 923  
BDAR Eldorene 170J  
BDAR Eldorene 957G

BW Adj WW/Ratio  
81 532 / 90

S Values	
SM	66
SW	54
SF	68
SG	37
SB	106

Heifer potential on this smooth-made, well-muscled Coalition son. With Jump Start and Bravo, will sire fantastic females.

EPDs Acc					Cacass EPDs Acc				
CED	Birth	Wean	Year	Milk	SC	Wt.	Marb.	Ribeye	Fat
+11	-0.6	+47	+86	+27	+1.09	+28	+0.52	+0.14	+0.058
0.31	0.52	0.44	0.33	0.28	0.36	0.34	0.31	0.30	0.28

Dam Production: 2 BR 100,2 WR 101, 1 YR 108



### Big Dry Specialist M77

**86** Tattoo: M77 DOB: 4/17/2024 Reg. No. 21187094

Sire: S A V Sensation 5615  
S A V Specialist 8896  
S A V Madame Pride 3304

Dam: BDAR Eisa Trojan Erica 730B  
BDAR Eisa Trojan Erica 444B

BW Adj WW/Ratio  
82 670 / 113

S Values	
SM	61
SW	58
SF	89
SG	24
SB	113

Good Specialist son with some stretch and frame. Maternal brothers have been some of our top bull in past sales. Very good weaning ratio.

EPDs Acc					Cacass EPDs Acc				
CED	Birth	Wean	Year	Milk	SC	Wt.	Marb.	Ribeye	Fat
+9	-0.3	+62	+124	+25	+1.02	+48	+0.33	+0.10	+0.108
0.33	0.56	0.48	0.38	0.33	0.40	0.38	0.35	0.33	0.32

Dam Production: 5 BR 100,5 WR 105, 2 YR 113



### Big Dry Bronc M78

**87** Tattoo: M78 DOB: 4/18/2024 Reg. No. 21187095

Sire: 2XL Bronc 8153  
Diamond Bronc H107  
Diamond Trojan Erica 0824

Dam: Coleman Bravo 6313  
BDAR Lass 940G  
BDAR Lass 605D

BW Adj WW/Ratio  
88 601 / 101

S Values	
SM	92
SW	70
SF	68
SG	55
SB	123

Heifer potential on this good Bronc who has several maternal sisters that would knock your eyes out with their looks.

EPDs Acc					Cacass EPDs Acc				
CED	Birth	Wean	Year	Milk	SC	Wt.	Marb.	Ribeye	Fat
+10	+0.4	+62	+103	+24	+1.10	+36	+0.67	+0.83	+0.026
0.32	0.54	0.46	0.35	0.29	0.37	0.35	0.32	0.30	0.29



### Big Dry S Tahoe M79

**88** Tattoo: M79 DOB: 4/19/2024 Reg. No. 21187096

Sire: Tehama Tahoe B767  
S Tahoe 2305  
S Elite 851

Dam: Dameron First Impression  
BDAR-JDM Lucy 422B  
OCC Lucy 258

BW Adj WW/Ratio  
88 526 / 89

S Values	
SM	60
SW	76
SF	95
SG	17
SB	112

Pathfinder dam. The Tahoe daughters have certainly worked here, they're moderate framed with maternal performance.

EPDs Acc					Cacass EPDs Acc				
CED	Birth	Wean	Year	Milk	SC	Wt.	Marb.	Ribeye	Fat
+5	-0.3	+68	+114	+32	+1.10	+56	-0.23	+0.76	-0.061
0.30	0.51	0.43	0.33	0.29	0.35	0.34	0.31	0.29	0.28

Dam Production: 9 BR 100,9 WR 103, 2 YR 103



### Big Dry Bronc M80

**89** Tattoo: M80 DOB: 4/19/2024 Reg. No. 21187098

Sire: 2XL Bronc 8153  
Diamond Bronc H107  
Diamond Trojan Erica 0824

Dam: Plattermere Weigh Up K360  
BDAR Blackette 633D  
BDAR Blackette 827U

BW Adj WW/Ratio  
80 621 / 105

S Values	
SM	85
SW	78
SF	90
SG	63
SB	153

Good weaning ratio on this good Bronc son that qualifies as "Targeting the Brand" for CAB, Easy calving combined with performance.

EPDs Acc					Cacass EPDs Acc				
CED	Birth	Wean	Year	Milk	SC	Wt.	Marb.	Ribeye	Fat
+11	+1.4	+77	+133	+27	+0.38	+55	+0.85	+0.73	+0.016
0.33	0.55	0.47	0.37	0.31	0.39	0.37	0.34	0.33	0.31

Dam Production: 7 BR 104,7 WR 102, 2 YR 100



Lot 90



### Big Dry Bronc M81

**90** Tattoo: M81 DOB: 4/19/2024 Reg. No. 21187099

Sire: 2XL Bronc 8153  
Diamond Bronc H107  
Diamond Trojan Erica 0824

Dam: SydGen Black Velvet 4423  
BDAR Young Lucy 854F  
BDAR Young Lucy 459B

BW Adj WW/Ratio  
85 626 / 106

S Values	
SM	41
SW	65
SF	92
SG	68
SB	160

A good Bronc son that weaned well. Lot 90 is clean-sheathed, with a strong topline and deep bodied. Dam has done a nice job. Bronc sires calves that are built to calve easily that grow well.

EPDs Acc					Cacass EPDs Acc				
CED	Birth	Wean	Year	Milk	SC	Wt.	Marb.	Ribeye	Fat
+8	+1.1	+81	+147	+18	+0.47	+54	+1.00	+0.82	+0.066
0.32	0.54	0.46	0.35	0.30	0.37	0.36	0.33	0.31	0.29



### Big Dry McLin M83

**91** Tattoo: M83 DOB: 4/21/2024 Reg. No. 21187101

S McLintock 9702  
Sire: Big Dry Big McLin K12  
BDAR Ruby 805F

Connealy Courage 25L  
Dam: BDAR Eldorene 515C  
BDAR Eldorene 018X

BW Adj WW/Ratio  
77 666 / 112

S Values	
SM	63
SW	84
SF	74
SG	45
SB	119

Heifer potential for larger heifers, plus weaning performance. Big-ribbed, long, and smooth shouldered.

EPDs Acc					Cacass EPDs Acc				
CED	Birth	Wean	Year	Milk	SC	Wt.	Marb.	Ribeye	Fat
+9	-0.7	+70	+120	+38	+0.87	+54	+0.53	+0.50	+0.020
0.29	0.52	0.44	0.32	0.27	0.33	0.33	0.30	0.28	0.27

Dam Production: 6 BR 103,6 WR 105, 1 YR 103



### Big Dry Cool H21 M84

**92** Tattoo: M84 DOB: 4/21/2024 Reg. No. 21187102

Connealy Cool 39L  
Sire: Big Dry Cool H21  
BDAR Queen Mother 345A

SydGen CC Rider 3582  
Dam: BDAR Zara 952G  
BDAR Zara 202Z

BW Adj WW/Ratio  
87 614 / 104

S Values	
SM	76
SW	70
SF	78
SG	50
SB	128

A long, clean-made son of H21 that ratioed well at weaning. Traces back to a very good cowline that was purchased from Stevenson Angus in 1977 at the NILE.

EPDs Acc					Cacass EPDs Acc				
CED	Birth	Wean	Year	Milk	SC	Wt.	Marb.	Ribeye	Fat
+4	+4.3	+77	+126	+29	+0.75	+50	+0.74	+0.32	+0.054
0.30	0.52	0.44	0.33	0.28	0.34	0.35	0.31	0.30	0.28

Dam Production: 4 BR 104,4 WR 95, 1 YR 93



### Big Dry Cool H21 M85

**93** Tattoo: M85 DOB: 4/21/2024 Reg. No. 21187103

Connealy Cool 39L  
Sire: Big Dry Cool H21  
BDAR Queen Mother 345A

Shipwheel Signature 5541  
Dam: S Queen Essa 9913  
S Queen Essa 4610

BW Adj WW/Ratio  
80 648 / 109

S Values	
SM	50
SW	53
SF	96
SG	29
SB	124

Great weaning on this thick made son of H21 out of a cow John purchased from Spickler Ranch South. Good bull.

EPDs Acc					Cacass EPDs Acc				
CED	Birth	Wean	Year	Milk	SC	Wt.	Marb.	Ribeye	Fat
+2	+1.8	+59	+108	+25	-0.01	+50	+0.13	+0.67	+0.008
0.29	0.52	0.44	0.33	0.28	0.34	0.35	0.31	0.30	0.28



### Big Dry McLin M86

**94** Tattoo: M86 DOB: 4/23/2024 Reg. No. 627876700

S McLintock 9702  
Sire: Big Dry Big McLin K12  
BDAR Ruby 805F

Sitz Resilient 10208  
Dam: BDAR Lass 110J

BW Adj WW/Ratio  
91 628 / 100

S Values	
SM	
SW	
SF	
SG	
SB	

Commercial son of Big McLin that is strong-topped and clean in his lines.

EPDs Acc					Cacass EPDs Acc				
CED	Birth	Wean	Year	Milk	SC	Wt.	Marb.	Ribeye	Fat



### Big Dry Cool H21 M87

**95** Tattoo: M87 DOB: 4/23/2024 Reg. No. 21207975

Connealy Cool 39L  
Sire: Big Dry Cool H21  
BDAR Queen Mother 345A

Connealy Courage 25L  
Dam: BDAR Lass 605D  
BDAR Lass 110Y

BW Adj WW/Ratio  
89 653 / 110

S Values	
SM	62
SW	59
SF	81
SG	59
SB	140

A good H21 that built to calve easy on your cows, then watch them calves grow.

EPDs Acc					Cacass EPDs Acc				
CED	Birth	Wean	Year	Milk	SC	Wt.	Marb.	Ribeye	Fat
+9	+1.8	+61	+108	+25	+1.11	+46	+0.66	+1.00	-0.011
0.31	0.53	0.45	0.34	0.30	0.35	0.36	0.32	0.31	0.29

Dam Production: 6 BR 101,6 WR 102, 1 YR 95



### Big Dry Specialist

**96** Tattoo: M88 DOB: 4/24/2024 Reg. No. 21187104

S A V Sensation 5615  
Sire: S A V Specialist 8896  
S A V Madame Pride 3304

Connealy Spur  
Dam: Vermilion Blackbird 5159  
Vermilion Blackbird 2224

BW Adj WW/Ratio  
84 572 / 96

S Values	
SM	52
SW	62
SF	85
SG	26
SB	111

Good son of Specialist out of a Connealy Spur daughter. This is a good bull, coming late in the sale, just because he's younger. Y'know, I remember Joe Goggins when he was young and he turned out ok...I think this bull will too.

EPDs Acc					Cacass EPDs Acc				
CED	Birth	Wean	Year	Milk	SC	Wt.	Marb.	Ribeye	Fat
+7	+1.4	+67	+117	+27	+0.78	+46	+0.30	+0.01	+0.053
0.32	0.54	0.46	0.37	0.32	0.38	0.36	0.33	0.31	0.30

Dam Production: 6 BR 100,5 WR 104, 2 YR 103



### Big Dry Bronc M89

**97** Tattoo: M89 DOB: 4/24/2024 Reg. No. 21187105

Sire: 2XL Bronc 8153  
Diamond Bronc H107  
Diamond Trojan Erica 0824

Dam: Sitz Investmen 294B  
BDAR Lass 613D  
Bdar Lass 146Y

BW 73 Adj WW/Ratio 607 / 102

S Values	
SM	66
SW	73
SF	102
SG	30
SB	132

Heifer potential with this smooth-made son of Bronc. Bronc daughters are calving this spring and are making nice young cows. Dam records 6@105 wwr

EPDs Acc					Cacass EPDs Acc				
CED	Birth	Wean	Year	Milk	SC	Wt.	Marb.	Ribeye	Fat
+11	-0.7	+61	+112	+37	+0.10	+56	+0.22	+0.66	+0.045
0.31	0.53	0.45	0.35	0.29	0.37	0.35	0.31	0.30	0.28

Dam Production: 7 BR 97,6 WR 105, 1 YR 100



### Big Dry Cool H21 M93

**100** Tattoo: M93 DOB: 4/30/2024 Reg. No. 21187110

Sire: Connealy Cool 39L  
Big Dry Cool H21  
BDAR Queen Mother 345A

Dam: BDAR Royal E13  
BDAR Queen Mother 907G  
BDAR Queen Mother 432B

BW 84 Adj WW/Ratio 576 / 97

S Values	
SM	83
SW	53
SF	102
SG	41
SB	143

A younger but good bull to end up on that will work well on the cowherd.

EPDs Acc					Cacass EPDs Acc				
CED	Birth	Wean	Year	Milk	SC	Wt.	Marb.	Ribeye	Fat
+1	+3.8	+61	+109	+24	+0.46	+59	+0.56	+0.40	+0.079
0.29	0.51	0.43	0.31	0.27	0.33	0.33	0.30	0.28	0.27

Dam Production: 4 BR 95,4 WR 96, 1 YR 89



### Big Dry Cool H82 M91

**98** Tattoo: M91 DOB: 4/25/2024 Reg. No. 21187108

Sire: Connealy Cool 39L  
Big Dry Cool H82  
BDAR E T Duchess 538C

Dam: V A R Generation 2100  
JLF Queen of Paintrock 5113  
Queen of Paintrock 68-6

BW 92 Adj WW/Ratio 653 / 110

S Values	
SM	74
SW	55
SF	91
SG	49
SB	140

Excellent weaning performance in this younger bull. Dam has seen far more dry years than wet ones and is still in the herd. Cows that will stick around and raise 8-9 calves with no extra care in our country are the good ones. It is not luck, it's genetic.

EPDs Acc					Cacass EPDs Acc				
CED	Birth	Wean	Year	Milk	SC	Wt.	Marb.	Ribeye	Fat
+2	+3.8	+66	+113	+22	+1.79	+46	+0.48	+0.88	-0.003
0.32	0.55	0.47	0.36	0.31	0.38	0.37	0.34	0.33	0.31

Dam Production: 8 BR 104,8 WR 102, 3 YR 103



### Big Dry Coalition M92

**99** Tattoo: M92 DOB: 4/26/2024 Reg. No. 21187109

Sire: U-2 Coalition 206C  
S Coalition 270  
S Blossom 0278

Dam: S A V Specialist 8896  
BDAR Carol Ann 137J  
BDAR Carol Ann 635D

BW 85 Adj WW/Ratio 482 / 98

S Values	
SM	46
SW	51
SF	97
SG	46
SB	143

Heifer Potential for larger heifers. We used Coalition as a clean-up sire on our heifers with no issues at all. He is an aggressive breeder and very sound, Lot 99's dam stems from the same family a Fat Cat, a former home-raised herd sire.

EPDs Acc					Cacass EPDs Acc				
CED	Birth	Wean	Year	Milk	SC	Wt.	Marb.	Ribeye	Fat
+12	+1.6	+62	+115	+20	+0.85	+47	+0.50	+0.50	-0.022
0.31	0.53	0.43	0.34	0.29	0.36	0.34	0.32	0.31	0.29

Pep and LuLu (and all the McRaes) thank you for attending today's sale.

Your continued support and friendship means the world to us.

Please join us after the sale at Sam and Jeff's for snacks, beverages and visiting.

# MAKE YOUR CATTLE STAND OUT



You've made a significant investment in your genetics, but does the market recognize that? Stand out by differentiating our cattle with AngusLink<sup>SM</sup> programs: the Genetic Merit Scorecard<sup>SM</sup> and AngusVerified<sup>SM</sup>.

ANGUS LINK  
**GENETIC  
MERIT  
SCORECARD<sup>SM</sup>**

The Genetic Merit Scorecard gives buyers the confidence they need to pay more for your quality calves.

**ANGUS  
VERIFIED<sup>SM</sup>**

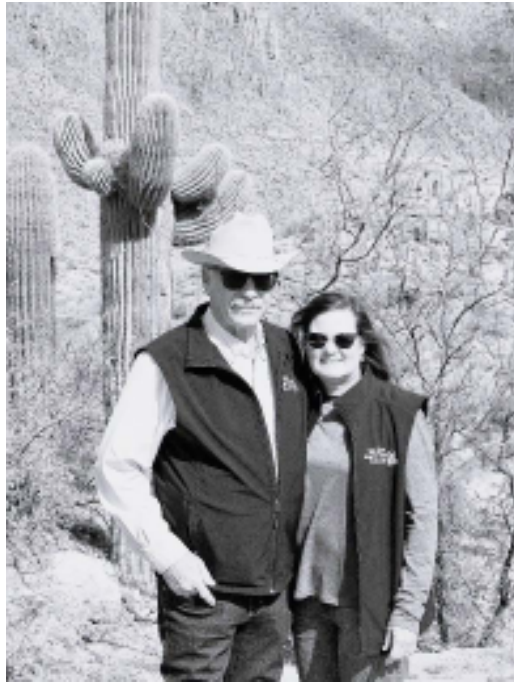
AngusVerified validates your calves are sired by registered Angus bulls and make your cattle stand apart from other black hides on sale day.

Users of AngusLink programs earn **\$13-15/CWT PREMIUMS** on average. Give us a call, and learn how to claim your competitive edge with AngusLink value-added programs.

**ANGUSLINK<sup>SM</sup>**  
VALUE ADDED PROGRAMS

**ANGUSLINK.COM | 816-383-5100**

The Genetic Merit Scorecard and AngusVerified are administered by IMI Global.



Hillari and I visited Tuscon this fall. We can grow more grass and less big cactus on the Big Dry



Ben and LuLu with Ben's winter fur harvest



Charlie with his bow season antelope.



John and Ben weighing and tagging a first calf heifers calf. We use an electronic scale mounted on the side by side to gather accurate birthweights





# Driving the science of better breeding

There's little room for error in the cattle business. Producers need the most advanced information to make smart selection decisions, and Angus Genetics Inc. (AGI) provides it through genomic-enhanced expected progeny differences (GE-EPDs).

GE-EPDs have become the industry standard for herd improvement, building on decades of science-backed genetic evaluation tools originated and maintained through the American Angus Association®, home to the largest and ever-growing single-breed beef cattle database.

EPDs that traditionally contained all pedigree, performance and progeny information now also include results from available genomic, or DNA, tests. Breeders who use genomic technology give buyers access to AGI-generated GE-EPDs that provide:

Increased predictability and decreased risk for young and unproven animals due to enhanced accuracy of EPDs

Better characterization of genetics for difficult-to-measure performance traits (such as carcass traits, maternal traits and feed efficiency)

The ability to make more rapid progress for traits that are important to you, due to:

- more accurate selection
- easier identification of genetic outliers
- the ability to propagate young animals with confidence earlier in their lives

In fact, GE-EPDs on unproven animals have the same amount of accuracy as if they have recorded an average of 15 progeny, depending on the trait. That's valuable insight, offered regularly through the breed's weekly national cattle evaluation.

TRAIT	PROGENY EQUIVALENT	TRAIT	PROGENY EQUIVALENT
Calving Ease Direct	25	Pulmonary Arterial Pressure	17
Calving Ease Maternal	19	Hair Shed Score	8
Birth Weight	23	Heifer Pregnancy	17
Weaning Weight	27	Maternal Milk	35
Yearling Weight	22	Mature Weight	14
Yearling Height	15	Mature Height	9
Dry Matter Intake	11	Carcass Weight	14
Scrotal Circumference	13	Marbling Score	10
Docility	11	Ribeye Area	16
Foot Claw Set	13	Backfat Thickness	13
Foot Angle	13		

## How do you know if EPDs are genomic-enhanced?

Ask your breeder, refer to the registration paper, or look for the AGI GE-EPD logo, Angus GS™ powered by partner Neogen or the HD50k by partner Zoetis. These images indicate animals for which genomic testing has been conducted and incorporated by AGI into GE-EPDs

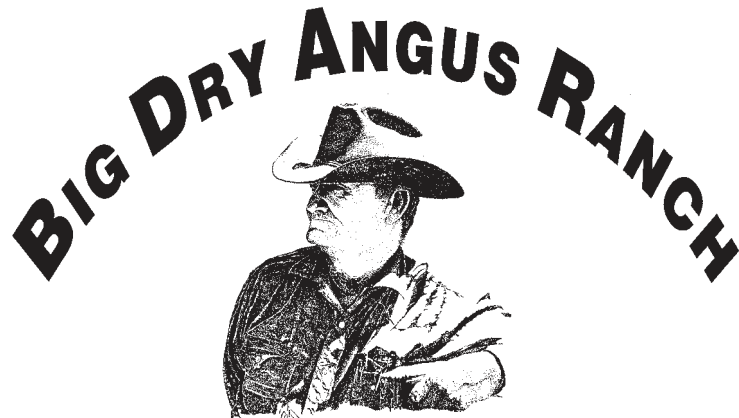


[www.angus.org](http://www.angus.org)

Big Dry Angus Ranch  
32 McRae Lane  
Jordan, MT 59337-9637

**ADDRESS SERVICE REQUESTED**

**37th Annual McRae's Production Auction  
Thursday, April 17 @ Glasgow Stockyards Inc.**



[www.bigdryangus.com](http://www.bigdryangus.com)